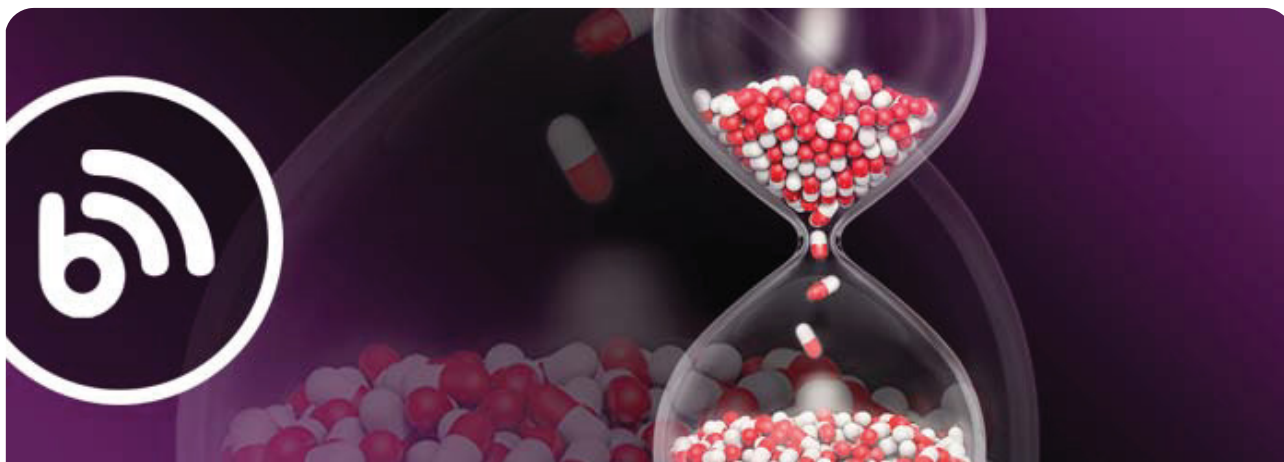


[PRIMARY MENU](#)

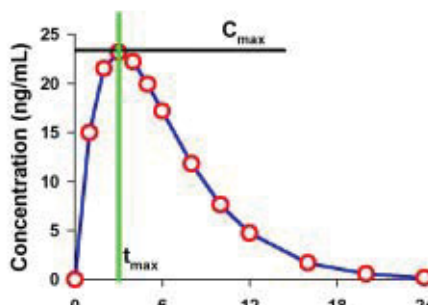
The Certara Blog: PK/PD Modeling & Simulation



Why C_{max} is a Continuous Variable and T_{max} is a Categorical Variable

Posted on February 11, 2013 by Nathan Teuscher

The maximum observed concentration (C_{max}) and the time of C_{max} (t_{max}) are both obtained directly from the concentration-time data. In this post, I will review how to determine both of these parameters, and how to interpret information from the values. These two parameters are simple, but they pack some important information if you know how to extract it!



Andrx 2006

Time (h)Example PK Curve with Cmax and tmax
labeled**C_{max}**

This parameter is defined as the highest observed concentration in a concentration-time profile. In the image, the C_{max} is represented by the value of the black horizontal line, just below 25 ng/mL. If two peaks of identical height are observed, the first peak is considered the C_{max}. The C_{max} can be determined in most statistical software packages by using the MAX function which selects the maximum value of a set of data. The C_{max} is determined within the dosing interval. Thus if two doses are administered, you will have a C_{max} value following each dose administration (assuming blood draws were taken after both).

t_{max}

This parameter is defined as the time of the sample identified as C_{max}. In the image, the t_{max} is represented by the green vertical line. If two peaks of identical height are observed, the time of the first peak is considered t_{max}. Since each concentration is associated with a specific time in a pairwise fashion (time, concentration), the value for t_{max} is easily determined from the pair after the C_{max} is selected.

Both of these parameters are obtained from observational data. Neither is calculated from a mathematical model, and thus each reported value must exist in the original data set. For example, if you only drew blood samples at 0, 1, 2, 4, 6, and 8 hours, you could not have a t_{max} value of 3 hours. The actual time of blood sample collection is used rather than nominal (or planned) collection time.

The sampling scheme will have an enormous impact on the values determined for each of these parameters. As a general rule, the more frequently you sample around the expected time of the maximum concentration, the more accurate the value of C_{max} and t_{max} will be relative to the “true” values. In contrast, if only one sample is taken around the expected time of the maximum concentration, you will tend to see low variation in your t_{max} variable, and high variation in your C_{max} variable. This is because it is very unlikely that all subjects will have identical PK profiles, thus you are selecting a single time at which you make a measurement, and all variability is attributed to the C_{max} value.

This discussion now brings us to a critical point. The variable C_{max} is a continuous variable that can take any real number from 0 to infinity. Thus when using statistics to summarize C_{max} information, you can use normal probability theory. This means you can use averages and standard deviations to report summary statistics. I generally use geometric mean as the best representation of the population mean C_{max} value because these values are log-normally distributed (tailed distribution biased away from zero). But arithmetic means are also acceptable to many. When comparing C_{max} values, you can use standard statistical tests based on normal distribution theory.

In contrast to C_{max}, the t_{max} variable is a categorical variable that can only take values based on the planned sampling scheme. Thus if your planned sample schedule includes 0, 1, 2, 4, 6, and 8 hours, you cannot have a sample at 1.5 or 10 hours (unless there was a deviation). Thus the expected values

for t_{max} are confined to some pre-selected categories. Thus when you summarize t_{max} results, you should NOT use averages and standard deviations, as they do not accurately describe the distribution of values. Instead, you should use medians and ranges. The median is the “middle” of the data, and the range represents the “extremes” of the data. This also applies to any statistical testing of t_{max} where you should use a non-parametric test like the Rank-Sum Test to compare t_{max} values from two different treatments (e.g. formulations).

So when designing your studies, make sure you take frequent samples around the time of the expected t_{max} , and always remember that C_{max} is a continuous variable, but t_{max} is a categorical variable.

To learn more about how to systematically leverage the many benefits of M&S across a drug development program, read this white paper.

White Paper:

Best Practices in Drug Development Modeling and Simulation

GET



ABOUT THE AUTHOR

Nathan Teuscher

MORE POSTS BY THIS AUTHOR

Dr. Nathan Teuscher is the Vice President of Pharmacometric Solutions at Certara. He is an expert in clinical pharmacology, pharmacometrics, pharmacokinetics and pharmacodynamics and was trained by David Smith at the University of Michigan. Dr. Teuscher has held leadership positions in biotechnology, pharmaceutical and contract research companies. In 2008 he established the Learn PKPD.com website to share his knowledge with the community. Prior to coming to Certara, he was the Founder and President of PK/PD Associates.

5 thoughts on “Why C_{max} is a Continuous Variable and T_{max} is a Categorical Variable”

1. Vinodkumar says:

[August 22, 2017 at 2:31 am](#)

Please clarify for me, on 2 median tmax in BABE studies, how to calculate median tmax?

[Reply](#)

2. **Nathan Teuscher** says:

[August 24, 2017 at 8:23 am](#)

The median is calculated from a collection of values (see <https://en.wikipedia.org/wiki/Median>).

Thus the median tmax is the median of all tmax values in the study. If you need to calculate twice the median, just multiply the median by 2.

[Reply](#)

3. **Jeffy Sarto** says:

[February 6, 2018 at 12:27 am](#)

What about T 1/2? Are descriptive statistics for T 1/2 other than median and range valid? Are they valid? If yes, then why? Thank you for the informative article, it was clear in explanation.

[Reply](#)

1. **Nathan Teuscher** says:

[February 6, 2018 at 5:39 pm](#)

T1/2 is a transformation of the terminal rate constant, which is a continuous variable.

Thus standard statistics (mean, standard deviation, etc.) are appropriate.

[Reply](#)

4. **Angela** says:

[February 28, 2018 at 4:12 am](#)

Since the PK curve is described by several points, can we assume that the remaining concentrations (not only Cmax) are also log-normally distributed?

[Reply](#)

Leave a Comment

Your email address will not be published. Required fields are marked *

Comment

Name *

Email *

Website

[POST COMMENT](#)



CATEGORIES

Clinical Pharmacology Strategy

Clinical Transparency & Disclosure

Model-based Meta-analysis

PBPK Modeling & Simulation

PK/PD Modeling & Simulation

- [ASCPT](#)
- [Bioanalysis](#)
- [CDISC](#)
- [Certara Strategic Consulting](#)
- [Clinical Pharmacology](#)
- [Clinical Pharmacology Strategy](#)
- [Clinical Trial Design](#)
- [Clinical Trial Outcomes Databases](#)

Regulatory & Medical Writing

Regulatory Submissions Management

Explore Litigation Insights

Docket Alarm provides insights to develop a more informed litigation strategy and the peace of mind of knowing you're on top of things.

Real-Time Litigation Alerts



Keep your litigation team up-to-date with **real-time alerts** and advanced team management tools built for the enterprise, all while greatly reducing PACER spend.

Our comprehensive service means we can handle Federal, State, and Administrative courts across the country.

Advanced Docket Research



With over 230 million records, Docket Alarm's cloud-native docket research platform finds what other services can't. Coverage includes Federal, State, plus PTAB, TTAB, ITC and NLRB decisions, all in one place.

Identify arguments that have been successful in the past with full text, pinpoint searching. Link to case law cited within any court document via Fastcase.

Analytics At Your Fingertips



Learn what happened the last time a particular judge, opposing counsel or company faced cases similar to yours.

Advanced out-of-the-box PTAB and TTAB analytics are always at your fingertips.

API

Docket Alarm offers a powerful API (application programming interface) to developers that want to integrate case filings into their apps.

LAW FIRMS

Build custom dashboards for your attorneys and clients with live data direct from the court.

Automate many repetitive legal tasks like conflict checks, document management, and marketing.

FINANCIAL INSTITUTIONS

Litigation and bankruptcy checks for companies and debtors.

E-DISCOVERY AND LEGAL VENDORS

Sync your system to PACER to automate legal marketing.