



# Riociguat (Adempas): a Novel Agent For the Treatment of Pulmonary Arterial Hypertension and Chronic Thromboembolic Pulmonary Hypertension

Diana Khaybullina, PharmD; Ami Patel, PharmD; and Tina Zerilli, PharmD

## INTRODUCTION

Pulmonary hypertension is a condition defined by a mean pulmonary artery pressure greater than or equal to 25 mm Hg at rest measured by right heart catheterization.<sup>1</sup> Previously classified into two categories (primary pulmonary hypertension or secondary pulmonary hypertension due to identified causes or risk factors), pulmonary hypertension is now categorized into five groups based on pathological findings, hemodynamic characteristics, and management (Table 1).<sup>2</sup> Because of the multiple etiologies of pulmonary hypertension, a thorough diagnostic evaluation is essential in patients who present with symptoms (dyspnea, fatigue, chest pain, syncope, edema) so that appropriate therapy may be initiated.<sup>3</sup>

Over the last decade, great strides have been made in the understanding and management of pulmonary arterial hypertension (PAH; WHO Group 1). PAH is a chronic, progressive disorder of the pulmonary arterial circulation that leads to pathological increases in peripheral vascular resistance (PVR) and ultimately to right heart failure.<sup>3</sup> Hemodynamically, PAH is characterized by a mean pulmonary artery pressure greater than or equal to 25 mm Hg at rest with a pulmonary artery wedge pressure less than or equal to 15 mm Hg and elevated PVR

*Dr. Khaybullina is a Staff Pharmacist, NewYork-Presbyterian/Weill Cornell Medical Center, New York, New York. Dr. Zerilli is Associate Professor of Pharmacy Practice at Arnold & Marie Schwartz College of Pharmacy and Health Sciences, Long Island University, Brooklyn, New York.*

**Disclosure:** The authors report no commercial or financial relationships in regard to this article.

**Table 1 Clinical Classification of Pulmonary Hypertension\***

<b>1. Pulmonary arterial hypertension (PAH: WHO Group 1)</b>
1.1 Idiopathic PAH
1.2 Heritable PAH
1.2.1 <i>BMPR2</i>
1.2.2 <i>ALK-1, ENG, SMAD9, CAV1, KCNK3</i>
1.2.3 Unknown
1.3 Drug- and toxin-induced
1.4 Associated with:
1.4.1 Connective tissue disease
1.4.2 HIV infection
1.4.3 Portal hypertension
1.4.4 Congenital heart diseases
1.4.5 Schistosomiasis
1' Pulmonary veno-occlusive disease and/or pulmonary capillary hemangiomatosis
1'' Persistent pulmonary hypertension of the newborn
<b>2. Pulmonary hypertension due to left heart disease (WHO Group 2)</b>
2.1 Left ventricular systolic dysfunction
2.2 Left ventricular diastolic dysfunction
2.3 Valvular disease
2.4 Congenital/acquired left heart inflow/outflow tract obstruction and congenital cardiomyopathies
<b>3. Pulmonary hypertension due to lung diseases and/or hypoxia (WHO Group 3)</b>
3.1 Chronic obstructive pulmonary disease
3.2 Interstitial lung disease
3.3 Other pulmonary diseases with mixed restrictive and obstructive pattern
3.4 Sleep-disordered breathing
3.5 Alveolar hypoventilation disorders
3.6 Chronic exposure to high altitude
3.7 Developmental lung diseases
<b>4. Chronic thromboembolic pulmonary hypertension (WHO Group 4)</b>
<b>5. Pulmonary hypertension with unclear multifactorial mechanisms (WHO Group 5)</b>
5.1 Hematological disorders: chronic hemolytic anemia, myeloproliferative disorders, splenectomy
5.2 Systemic disorders: sarcoidosis, pulmonary histiocytosis, lymphangioleiomyomatosis
5.3 Metabolic disorders: glycogen storage disease, Gaucher disease, thyroid disorders
5.4 Others: tumoral obstruction, fibrosing mediastinitis, chronic renal failure, segmental PH
<small><i>ALK-1</i> = activin receptor-like kinase 1; <i>BMPR2</i> = bone morphogenic protein receptor type II; <i>CAV1</i> = caveolin-1; <i>ENG</i> = endoglin; HIV = human immunodeficiency virus; WHO = World Health Organization</small>
<small>* Updated at the Fifth World Symposium on Pulmonary Hypertension in Nice, France, 2013. Adapted from Simonneau et al.<sup>2</sup></small>

(greater than 3 mm Hg/l\*min).<sup>1</sup> Though PAH may be idiopathic in nature, it may also be heritable, acquired via drug exposure, or the result of disorders ranging from connective tissue disease and human immunodeficiency virus (HIV) infection to portal hypertension, among others.<sup>2</sup> Based on data from the Registry to Evaluate Early and Long-Term Pulmonary Arterial Hypertension Disease Management (REVEAL), the incidence of PAH in U.S. adults is 2.0 per million, with approximately equal numbers of patients with idiopathic or heritable PAH versus PAH due to associated disorders.<sup>4</sup> Survival rates progressively decline from the time of diagnosis (85% at one year versus 49% at seven years).<sup>5</sup> However, data from various registries indicate that overall survival rates have improved in recent years, likely as a result of improved treatment options.<sup>6</sup>

The treatment of PAH is difficult, largely because of the multiple pathophysiological processes involved, including excessive vascular proliferation, reduced apoptosis, thrombosis, inflammation, and vasoconstriction.<sup>3</sup> General measures recommended for all PAH patients include supervised exercise training, avoidance of pregnancy, routine immunizations (influenza and pneumococcal), psychosocial support, and referral to expert centers.<sup>7</sup> Additional supportive therapy includes the use of oral anticoagulants, diuretics, oxygen, and digoxin. Calcium-channel blocker therapy is recommended in those patients exhibiting a positive response to an acute vasoreactivity test.<sup>7</sup> In those without such a response, and in patients who cannot sustain a response to calcium-channel blocker therapy, a PAH-approved drug should be selected, taking into account multiple variables—including the patient's functional class, the medication's route of administration, side-effect and drug-interaction profiles, patient preference, physician experience, and cost of therapy.<sup>7</sup>

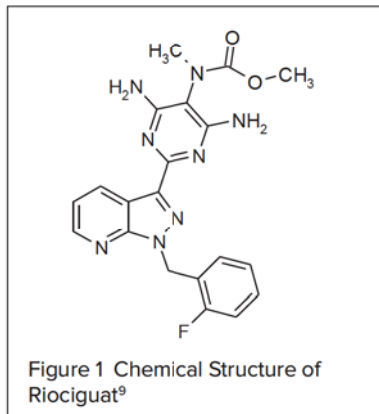
PAH-specific therapy includes endothelin receptor antagonists (ambrisentan, bosentan, macitentan), phosphodiesterase type-5 (PDE-5) inhibitors (sildenafil, tadalafil), and prostanoids (iloprost, treprostinil, epoprostenol). Such drugs may cautiously be considered in non-PAH pulmonary hypertension as well, although there are few data to guide the decision-making process.<sup>3</sup> Typically, treatment for the other more prevalent forms of pulmonary hypertension (WHO

Groups 2–5) is directed at the underlying disease state, whether it is cardiac, pulmonary, or thromboembolic in nature.<sup>3</sup> Notably, for chronic thromboembolic pulmonary hypertension (CTEPH; WHO Group 4) the treatment of choice is surgical; the first-line therapy, pulmonary endarterectomy, is potentially curative.<sup>3</sup>

In October 2013, the Food and Drug Administration approved riociguat (Adempas, Bayer Healthcare Pharmaceuticals), the first agent in a novel therapeutic class called soluble guanylate cyclase (sGC) stimulators.<sup>8</sup> Riociguat was approved for the treatment of adults with PAH, thereby adding to the treatment armamentarium of this condition. Notably, riociguat was also approved for the treatment of adults whose CTEPH persists or recurs following pulmonary endarterectomy, and in those with inoperable CTEPH.<sup>9</sup> Approval for use in patients with CTEPH is unique to riociguat, as no other PAH-approved agent is indicated for other forms of pulmonary hypertension.<sup>10–20</sup> The purpose of this article is to review the pharmacological and clinical characteristics of riociguat and discuss their implications for its use.

## CHEMICAL STRUCTURE<sup>9</sup>

Chemically, riociguat is methyl 4,6-diamino-2-[1-(2-fluorobenzyl)-1H-pyrazolo[3,4-b]pyridin-3-yl]-5-pyrimidinyl(methyl) carbamate. The molecular formula and molecular weight of riociguat are C<sub>20</sub>H<sub>19</sub>FN<sub>8</sub>O<sub>2</sub> and 422.42 g/mol, respectively. The chemical structure is shown in Figure 1.



## CLINICAL PHARMACOLOGY

In healthy subjects, endothelial cell-derived nitric oxide (NO) induces vaso-

dilation in vascular smooth muscle cells through the activation of sGC and the subsequent increase in production of cyclic guanosine monophosphate (cGMP). The production of endothelial cell-derived NO is reduced in patients with PAH, so targeting the NO/sGC/cGMP pathway is a logical therapeutic approach.<sup>21</sup> Riociguat does so via a dual mechanism of action: It sensitizes sGC to endogenous NO, and it directly stimulates sGC receptors independent of NO availability, resulting in vasorelaxation and antiproliferative effects.<sup>9,21</sup> This is in contrast to PDE-5 inhibitors, which target a component of the NO signaling pathway further downstream and have restricted efficacy in the presence of reduced NO levels.<sup>21</sup>

## PHARMACODYNAMICS AND PHARMACOKINETICS

In an early hemodynamic study evaluating doses of 1 mg or 2.5 mg of riociguat in patients with pulmonary hypertension, riociguat significantly reduced PVR, mean pulmonary arterial pressure, systolic blood pressure, and systemic vascular resistance in addition to increasing the cardiac index in a dose-dependent manner.<sup>22</sup> Comparable hemodynamic effects were subsequently seen in a phase 2 study.<sup>23</sup> The effects of riociguat on PVR and N-terminal pro-brain natriuretic peptide (NT-proBNP) were further evaluated in phase 3 clinical studies as prespecified secondary outcomes (whereas the impact on other hemodynamic variables was exploratory in nature).<sup>24,25</sup> Compared with placebo, statistically significant reductions in PVR were evident in riociguat-treated patients; least-squares mean differences (LSMD) from baseline were  $-226 \text{ dyn} \cdot \text{sec} \cdot \text{cm}^{-5}$  in patients with PAH<sup>24</sup> and  $-246 \text{ dyn} \cdot \text{sec} \cdot \text{cm}^{-5}$  in patients with CTEPH ( $P < 0.001$ ).<sup>25</sup> Similarly, NT-proBNP levels were significantly lower ( $P < 0.001$ ) in riociguat-treated patients with PAH (LSMD,  $-432 \text{ pg/mL}$ ) and CTEPH (LSMD,  $-444 \text{ pg/mL}$ ).<sup>24,25</sup>

Riociguat is readily absorbed, with an absolute oral bioavailability of approximately 94% that is not affected by food.<sup>9</sup> At doses ranging from 0.5 mg to 2.5 mg, riociguat exhibits dose-dependent increases in plasma concentrations with pronounced variability among individuals.<sup>22,26</sup> Peak plasma concentrations occur within 1.5 hours after oral intake.<sup>9,22</sup> Riociguat is not extensively distributed; its volume of

distribution is approximately 30 L in both healthy subjects and patients with pulmonary hypertension.<sup>9,27</sup> Riociguat is approximately 95% bound to human plasma proteins, mainly serum albumin and  $\alpha$ 1-acidic glycoprotein.<sup>9,27</sup> Several cytochrome P450 (CYP) enzymes are involved in the metabolism of riociguat (CYP1A1, CYP3A4/5, CYP2C8, and CYP2J2), though the formation of the major active metabolite, M1, is largely catalyzed by CYP1A1. Clinically, this is noteworthy because CYP1A1 is inducible by exposure to polycyclic aromatic hydrocarbons such as those found in cigarette smoke, thereby warranting dosage adjustments in smokers.<sup>9,27</sup> Furthermore, riociguat is a substrate of the efflux transporters P-glycoprotein (P-gp) and breast cancer resistance protein (BCRP), making the compound prone to drug interactions. The drug is eliminated in the urine (40%) and feces (53%), largely as metabolites.<sup>9,27</sup> The elimination half-life is longer in patients with PAH (approximately 12 hours) than in healthy subjects (approximately seven hours), likely because of impaired elimination in PAH patients.<sup>22,26,27</sup> Average systemic clearance is 1.8 L/hr in patients with PAH, approximately half of that seen in healthy subjects (3.4 L/hr).<sup>9,22,27</sup>

Dose adjustments based on sex, age, weight, or race/ethnicity are not necessary because these factors have not demonstrated a clinically relevant effect on the pharmacokinetics of riociguat and its active metabolite.<sup>9,27</sup> Despite significant hepatic metabolism and renal elimination, studies indicate that impairment in hepatic or renal function also do not necessitate dosage adjustments.<sup>9,27</sup> Of note, the effect of riociguat in patients with end-stage renal disease (creatinine clearance less than 15 mL/min) or severe hepatic impairment (Child Pugh C) has not been evaluated.<sup>9</sup>

## CLINICAL STUDIES

The efficacy of riociguat was established in two pivotal phase 3 studies involving patients with PAH (WHO Group 1) or CTEPH (WHO Group 4).<sup>24,25</sup> Additionally, phase 2 studies evaluating the effect of riociguat in patients with pulmonary hypertension associated with systolic left ventricular dysfunction (PH-sLVD; WHO Group 2) and interstitial lung disease (WHO Group 3) have been published and are briefly summarized here.<sup>28,29</sup>

## Pulmonary Arterial Hypertension

The PATENT-1 trial was an international, multicenter, randomized, double-blind, placebo-controlled, 12-week study evaluating the efficacy and safety of riociguat in patients with symptomatic PAH who were either not receiving treatment for the condition or were being treated with endothelin receptor antagonists or nonintravenous prostanoids.<sup>24</sup> A total of 443 patients received placebo (n = 126), riociguat administered orally at individually adjusted doses up to 2.5 mg three times daily (n = 254), or riociguat at doses adjusted up to 1.5 mg three times daily (n = 63). The latter treatment arm was included solely for exploratory purposes and was therefore excluded from the efficacy analysis. Most randomized patients were white (61%) and female (79%) with idiopathic PAH (61%) or PAH associated with connective tissue disease (25%). Almost all patients were in WHO functional class II or III (42% and 53%, respectively) and half were receiving treatment with other PAH therapies, largely endothelin receptor antagonists.<sup>24</sup>

With respect to the primary endpoint, the change from baseline to the end of week 12 in six-minute walk distance (6MWD), there was a statistically significant difference in the riociguat 2.5-mg-maximum group versus the placebo group (LSMD, 36 m;  $P < 0.001$ ).<sup>24</sup> The effect was consistent across numerous subgroups of patients, including those who were treatment-naïve and those on concomitant endothelin receptor antagonists or prostanoids. Patients with more advanced disease (WHO functional class III or IV) experienced greater improvements in exercise capacity than those in WHO functional class I or II. Statistically significant improvements from baseline were also noted with riociguat therapy in several secondary endpoints, including PVR ( $P < 0.001$ ), NT-proBNP levels ( $P < 0.001$ ), WHO functional class ( $P = 0.003$ ), Borg dyspnea score ( $P = 0.002$ ), and time to clinical worsening ( $P = 0.005$ ). Quality of life, as assessed by the EuroQol Group 5-Dimension Self-Report Questionnaire, did not significantly differ between groups.<sup>24</sup>

Study discontinuation because of adverse events occurred in 3% of the riociguat 2.5-mg-maximum group versus 7% in the placebo group.<sup>24</sup> The most frequently occurring serious adverse

events in the riociguat 2.5-mg-maximum group and placebo group were syncope (1% versus 4%, respectively), worsening pulmonary hypertension (less than 1% versus 2%, respectively), chest pain (1% in both groups), and right ventricular failure (1% in both groups).<sup>24</sup> Additional adverse events data are discussed in the Safety and Tolerability section.

Ninety-eight percent (N = 396) of patients who completed the PATENT-1 study entered PATENT-2, an ongoing, open-label, long-term extension study.<sup>24</sup> An exploratory analysis of the first 12 weeks revealed additional improvements in 6MWD in patients receiving riociguat up to 2.5 mg three times daily; there was a mean increase of 53 m over the baseline distance noted in PATENT-1.<sup>24</sup> Sustained benefits in 6MWD and functional class were also noted in an interim one-year unpublished analysis of this study.<sup>30</sup>

## Chronic Thromboembolic Pulmonary Hypertension

Ghofrani et al<sup>25</sup> evaluated the efficacy and safety of riociguat in patients with CTEPH in an international, multicenter, randomized, double-blind, placebo-controlled study (CHEST-1). Patients (N = 261) with inoperable CTEPH or persistent or recurrent pulmonary hypertension after pulmonary endarterectomy were randomly assigned to receive placebo (n = 88) or riociguat (n = 173) up to 2.5 mg three times daily for 16 weeks. Clinical outcome measures were similar to those in PATENT-1.

The majority of randomized patients (mean age, 59 years; 66% female) had inoperable CTEPH (72%) and, as in PATENT-1, most were in WHO functional class II (31%) or III (64%).<sup>25</sup> Similar to the findings seen in patients with PAH, there was a statistically significant improvement from baseline in the 6MWD (LSMD, 46 m;  $P < 0.001$ ). This effect was consistent across all subgroups of patients, though less pronounced in patients with persistent/recurrent pulmonary hypertension. Riociguat-treated patients also experienced statistically significant improvements in several secondary endpoints, notably PVR ( $P < 0.001$ ), NT-proBNP level ( $P < 0.001$ ), and WHO functional class ( $P = 0.003$ ); clinical worsening was not significantly delayed. Few patients discontinued the study because

*continued on page 755*

continued from page 751

of adverse events (3% in the riociguat group versus 2% in the placebo group). Right ventricular failure (3% of patients in each group), syncope (2% in the riociguat group and 3% in the placebo group), and hemoptysis (2% in the riociguat group) were the most frequent serious adverse events.<sup>25</sup> The most commonly reported adverse events are summarized in the Safety and Tolerability section. Preliminary data from the long-term extension study (CHEST-2), which have been presented but not yet published, suggest that effects on 6MWD and functional class are sustained in this patient population and that riociguat is generally well tolerated with a good long-term safety profile.<sup>31</sup> As with PATIENT-2, these data must be viewed cautiously until the full results of the study are available.

**Unlabeled Uses**

Bonderman et al<sup>28</sup> evaluated the effects of riociguat on hemodynamic and clinical outcomes in heart failure patients with PH-sLVD in a double-blind, multicenter, phase 2b study. Eligible patients (N = 201) were randomized in a 2:1:1:2 fashion to one of four treatment arms: placebo, riociguat 0.5 mg, riociguat 1 mg, or riociguat 2 mg, three times daily for a 16-week treatment period. In addition, participants received standard medical treatment (angiotensin-converting enzyme inhibitors/angiotensin-receptor blockers, beta blockers, and aldosterone antagonists) or cardiac device therapy. The primary endpoint, placebo-corrected change from baseline to week 16 in mean pulmonary artery pressure, was not significantly different between the riociguat 2-mg group and the placebo group (LSMD, -2.7, P = 0.10). Use of riociguat did, however, result in significant improvements in several hemodynamic variables (cardiac index, stroke volume index, PVR, and systemic vascular resistance) without significantly affecting heart rate and blood pressure. Notably, echocardiographic parameters and exploratory clinical outcomes, such as 6MWD, clinical worsening events, and change in functional class, were also not improved, although an improvement in health-related quality of life was found.<sup>28</sup> More studies are needed to better characterize the role of riociguat in this patient population.

In another phase 2, open-label, uncontrolled pilot trial, Hoepfer et al<sup>29</sup> evaluated the efficacy of riociguat (target dose of

2.5 mg three times daily) in patients with pulmonary hypertension due to interstitial lung disease (N = 22), though the study was primarily designed to assess safety and tolerability. Although cardiac output and PVR improved, this did not translate into substantial improvements in clinically relevant outcomes. There was only a slight increase in 6MWD, while functional class and quality of life measures remained unchanged. During the initial 12 weeks of treatment and at the interim 12-month mark of the long-term extension phase, 104 adverse events were reported, 70% of which were considered drug-related. Dyspnea, peripheral edema, dyspepsia, headache, and “feeling hot” were the most frequently reported adverse events.<sup>29</sup> The clinical relevance

and applicability of this data is limited owing to the small, uncontrolled, open-label design of this study.

**SAFETY AND TOLERABILITY**

**Adverse Effects**

Information on the adverse-event profile of riociguat is restricted to what is known from the fairly short-term phase 3 clinical trials involving patients with PAH and CTEPH. The most commonly reported adverse events in PATIENT-1 and CHEST-1 were headache, dizziness, dyspepsia, peripheral edema, nausea, vomiting, diarrhea, and nasopharyngitis (Table 2).<sup>24,25</sup> Hypotension was also frequently reported and significantly greater in riociguat-treated patients enrolled in PATIENT-1; this would be

**Table 2 Adverse Events Reported in at Least 5% of Riociguat-Treated Patients And at a Frequency Greater Than Placebo in Phase 3 Clinical Trials<sup>24,25</sup>**

Adverse Events	Number of Patients (%)				
	PATIENT-1			CHEST-1	
	Riociguat, maximum 2.5 mg t.i.d. (n = 254)	Riociguat, maximum 1.5 mg t.i.d. (n = 63)	Placebo (n = 126)	Riociguat, maximum 2.5 mg t.i.d. (n = 173)	Placebo (n = 88)
Headache	69 (27)	20 (32)	25 (20)	43 (25)	12 (14)
Dyspepsia	48 (19)	8 (13)	10 (8)	31 (18)	7 (8)
Peripheral edema	44 (17)	14 (22)	14 (11)	27 (16)	18 (20)
Dizziness	40 (16)	15 (24)	15 (12)	39 (23)	11 (12)
Nasopharyngitis	26 (10)	6 (10)	14 (11)	26 (15)	8 (9)
Nausea	40 (16)	10 (16)	16 (13)	19 (11)	7 (8)
Diarrhea	35 (14)	6 (10)	13 (10)	17 (10)	4 (5)
Vomiting	26 (10)	7 (11)	11 (9)	17 (10)	3 (3)
Pyrexia	8 (3)	6 (10)	4 (3)	—	—
Hypotension	25 (10)*	2 (3)	3 (2)	16 (9)	3 (3)
Anemia	21 (8)	1 (2)	3 (2)	—	—
Palpitations	20 (8)	5 (8)	6 (5)	—	—
Gastroesophageal reflux disease	14 (6)	4 (6)	4 (3)	—	—
Gastritis	4 (2)	4 (6)	0	—	—
Nasal congestion	11 (4)	4 (6)	3 (2)	—	—
Upper respiratory tract infection	—	—	—	10 (6)	4 (5)
Increase in INR	—	—	—	10 (6)	4 (5)
Constipation	—	—	—	10 (6)	1 (1)
Prolonged aPTT	—	—	—	8 (5)	2 (2)

aPTT = activated partial-thromboplastin time; INR = international normalized ratio; t.i.d. = three times daily  
\* P = 0.005

expected because of the drug's vasodilatory actions. Notably, this did not translate into an increased incidence of syncope. Syncope was more frequently reported in the placebo-treated patients in both PATENT-1 and CHEST-1 (4% and 3%, respectively) than in patients treated with riociguat (1% and 2%, respectively).<sup>24,25</sup>

It is worth noting that various bleeding events were reported more frequently in riociguat-treated patients than in the placebo groups in both studies.<sup>32</sup> Treatment-emergent bleeding events were reported for 11.0% of subjects in the riociguat 2.5-mg group versus 9.5% of subjects in the placebo group in the PATENT-1 study, and 13.3% of subjects in the riociguat group compared with 11.4% of subjects in the placebo group in the CHEST-1 trial. The most frequently reported bleeding events were epistaxis and hemoptysis.<sup>32</sup> The occurrence of serious bleeding events during the clinical development of riociguat, albeit low (2.4% versus 0% in placebo), prompted the inclusion of a warning in the prescribing information.<sup>9</sup> Ultimately, the long-term extension studies and post-marketing reports will shed more light on the overall safety of this agent.

### Contraindications

Because of teratogenicity documented in preclinical studies, riociguat is classified as pregnancy category X and contraindicated for use during pregnancy.<sup>9</sup> A restricted distribution program is in place (the Adempas REMS Program) for all females on riociguat therapy, irrespective of reproductive potential. The program requires all prescribers and pharmacies dispensing riociguat to be certified with the program, and in females of reproductive potential, pregnancy must be ruled out prior to initiation of therapy, monthly during treatment, and one month after drug discontinuation. Acceptable methods of contraception must be utilized during and for one month after treatment.<sup>33</sup> Concurrent administration of riociguat with nitrates or NO donors as well as with PDE-5 or nonspecific PDE inhibitors (e.g., dipyridamole, theophylline) is also contraindicated because of additive hemodynamic effects resulting in hypotension.<sup>9</sup>

### Warnings and Precautions

As a result of its blood-pressure-lowering effects, the riociguat label warns of the potential for symptomatic hypoten-

sion or ischemia when riociguat is used in patients with hypovolemia, severe left ventricular outflow obstruction, resting hypotension, and autonomic dysfunction, and when it is used concurrently with antihypertensive or strong CYP and P-gp/BCRP inhibitors (see the Drug Interactions section).<sup>9</sup> Initial lower doses in those at risk for hypotension and/or dose reductions in those developing hypotension while on riociguat therapy are warranted. As previously noted, the labeling also warns of the increased incidence of bleeding noted with riociguat.<sup>9</sup> Furthermore, since the cardiovascular status of patients with pulmonary veno-occlusive disease may be significantly worsened by agents with vasodilatory effects on the pulmonary vasculature, administration of riociguat to such patients is not recommended. The possibility of associated pulmonary vaso-occlusive disease should be considered in the event that pulmonary edema develops while on riociguat therapy.<sup>9</sup>

### DRUG INTERACTIONS

Both riociguat and NO delivered by nitrates act on sGC to generate an increase in cGMP. PDE-5 inhibitors also increase cGMP by inhibiting its breakdown. Because of their mechanisms of action on the NO/sGC/cGMP pathway, an additive hypotensive effect is expected. This has been demonstrated with concurrent administration of riociguat and nitrates or NO donors (such as amyl nitrate) and PDE-5 inhibitors.<sup>32</sup> As a result, concurrent use is contraindicated. With respect to pharmacokinetic interactions, *in vitro* and *in vivo* studies suggest that riociguat is unlikely to appreciably induce or inhibit CYP enzymes and drug transporters, lowering its interaction potential as a precipitant drug.<sup>9,34,35</sup> However, plasma concentrations of riociguat are affected by other precipitant compounds, warranting dosage and administration adjustments (see the Dosage and Administration section). As alluded to previously, plasma concentrations of riociguat are reduced by 50% to 60% in smokers because of induction of the CYP1A1 enzyme by polycyclic aromatic hydrocarbons.<sup>9</sup> Strong CYP3A inducers (e.g., rifampin, phenytoin, carbamazepine, phenobarbital, St. John's wort) may also significantly decrease riociguat exposure, although data to guide

dose adjustments are lacking.<sup>9</sup> Concurrent administration of ketoconazole, a strong CYP and P-gp/BCRP inhibitor, led to a 150% increase in riociguat's mean area under the curve (AUC).<sup>32</sup> A similar increase in riociguat exposure is expected with HIV protease inhibitors.<sup>9</sup> Concurrent administration with antacids such as aluminum hydroxide/magnesium hydroxide resulted in reduced riociguat bioavailability (mean  $C_{max}$  decrease of 56% and mean AUC decrease of 34%), an effect that was also seen, although to a lesser extent, with proton-pump inhibitor co-administration (decrease in mean  $C_{max}$  of 35% and mean AUC of 26%).<sup>9,32</sup> Importantly, riociguat demonstrates no clinically relevant interactions with warfarin and aspirin, agents that are typically used in patients with PAH.<sup>9,35</sup>

### DOSAGE AND ADMINISTRATION<sup>9</sup>

Riociguat is available as oral tablets in five different strengths (0.5, 1, 1.5, 2, and 2.5 mg) to allow for dosage flexibility. The recommended starting dose is 1 mg taken three times a day. In patients at risk for hypotension, consideration should be given to initiating treatment at 0.5 mg three times a day. The dose may be increased no sooner than every two weeks to a maximum dose of 2.5 mg three times a day if tolerated, though patients who smoke may require higher doses. Up-titration should occur in increments of 0.5 mg taken three times a day and only if the patient's systolic blood pressure remains above 95 mm Hg and there are no signs or symptoms of hypotension. Should hypotension occur, a decrease in dose (by 0.5 mg taken three times a day) is recommended. In patients concomitantly using riociguat with strong CYP and P-gp/BCRP inhibitors (e.g.,azole antifungals and protease inhibitors), a starting dose of 0.5 mg three times daily should be considered and close monitoring for signs and symptoms of hypotension is necessary. Because of the impact on riociguat absorption, antacids should not be taken within one hour of riociguat. Any treatment interruption for three days or more warrants retitration of the riociguat dose.

### COST

The average wholesale price of a 30-day supply (90 tablets) of riociguat, regardless of the strength, is \$9,270.<sup>36</sup> This is in

# Explore Litigation Insights

Docket Alarm provides insights to develop a more informed litigation strategy and the peace of mind of knowing you're on top of things.

## Real-Time Litigation Alerts



Keep your litigation team up-to-date with **real-time alerts** and advanced team management tools built for the enterprise, all while greatly reducing PACER spend.

Our comprehensive service means we can handle Federal, State, and Administrative courts across the country.

## Advanced Docket Research



With over 230 million records, Docket Alarm's cloud-native docket research platform finds what other services can't. Coverage includes Federal, State, plus PTAB, TTAB, ITC and NLRB decisions, all in one place.

Identify arguments that have been successful in the past with full text, pinpoint searching. Link to case law cited within any court document via Fastcase.

## Analytics At Your Fingertips



Learn what happened the last time a particular judge, opposing counsel or company faced cases similar to yours.

Advanced out-of-the-box PTAB and TTAB analytics are always at your fingertips.

## API

Docket Alarm offers a powerful API (application programming interface) to developers that want to integrate case filings into their apps.

## LAW FIRMS

Build custom dashboards for your attorneys and clients with live data direct from the court.

Automate many repetitive legal tasks like conflict checks, document management, and marketing.

## FINANCIAL INSTITUTIONS

Litigation and bankruptcy checks for companies and debtors.

## E-DISCOVERY AND LEGAL VENDORS

Sync your system to PACER to automate legal marketing.