



US 20070016086A1

(19) **United States**

(12) **Patent Application Publication** (10) **Pub. No.: US 2007/0016086 A1**

Inukai et al. (43) **Pub. Date: Jan. 18, 2007**

(54) **BLOOD PRESSURE MONITORING APPARATUS**

(30) **Foreign Application Priority Data**

Jun. 29, 2005 (JP) 2005-190469
Jun. 29, 2005 (JP) 2005-190470

(75) Inventors: **Hidekatsu Inukai**, Nagoya-shi (JP);
Toru Oka, Ichinomiya-shi (JP)

Publication Classification

(51) **Int. Cl.**
A61B 5/02 (2006.01)
(52) **U.S. Cl.** **600/485; 600/500**

Correspondence Address:
DRINKER BIDDLE & REATH (DC)
1500 K STREET, N.W.
SUITE 1100
WASHINGTON, DC 20005-1209 (US)

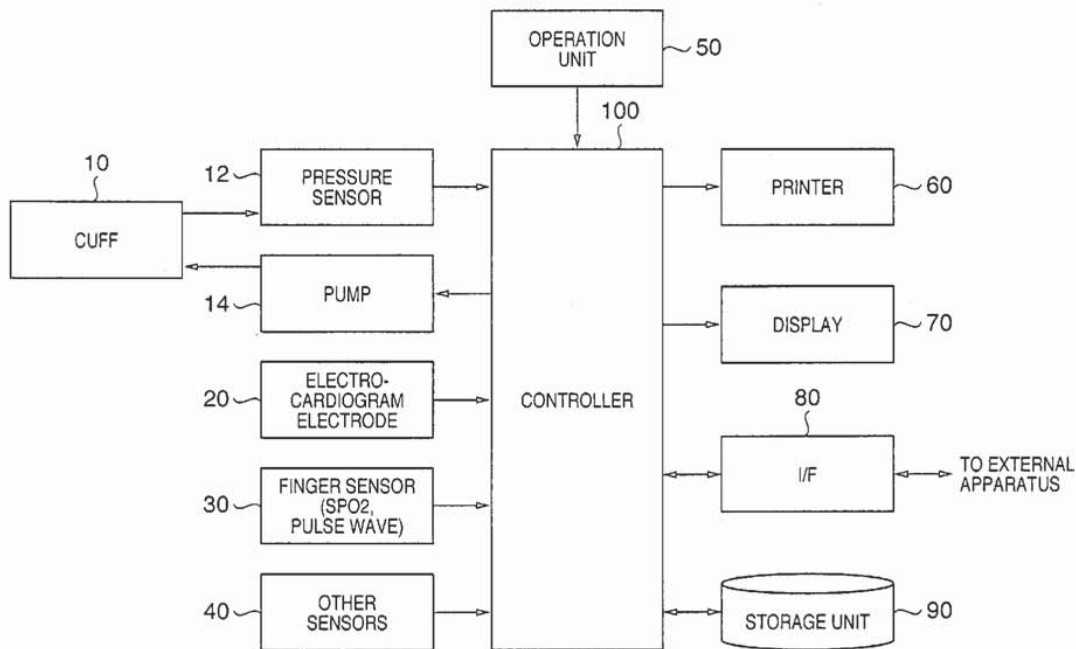
(57) **ABSTRACT**

In blood pressure monitoring apparatus which continuously estimates and monitors blood pressure by using the pulse wave propagation time, blood pressure fluctuation can be accurately estimated. If both blood pressure estimated from the pulse wave propagation time and a waveform parameter obtained from the accelerated pulse wave have abnormal values, it is determined that the blood pressure is truly fluctuating, and blood pressure measurement by another method, e.g., blood pressure measurement using a cuff is performed.

(73) Assignee: **FUKUDA DENSHI CO., LTD.**

(21) Appl. No.: **11/475,938**

(22) Filed: **Jun. 28, 2006**



Apple Inc.
APL1035

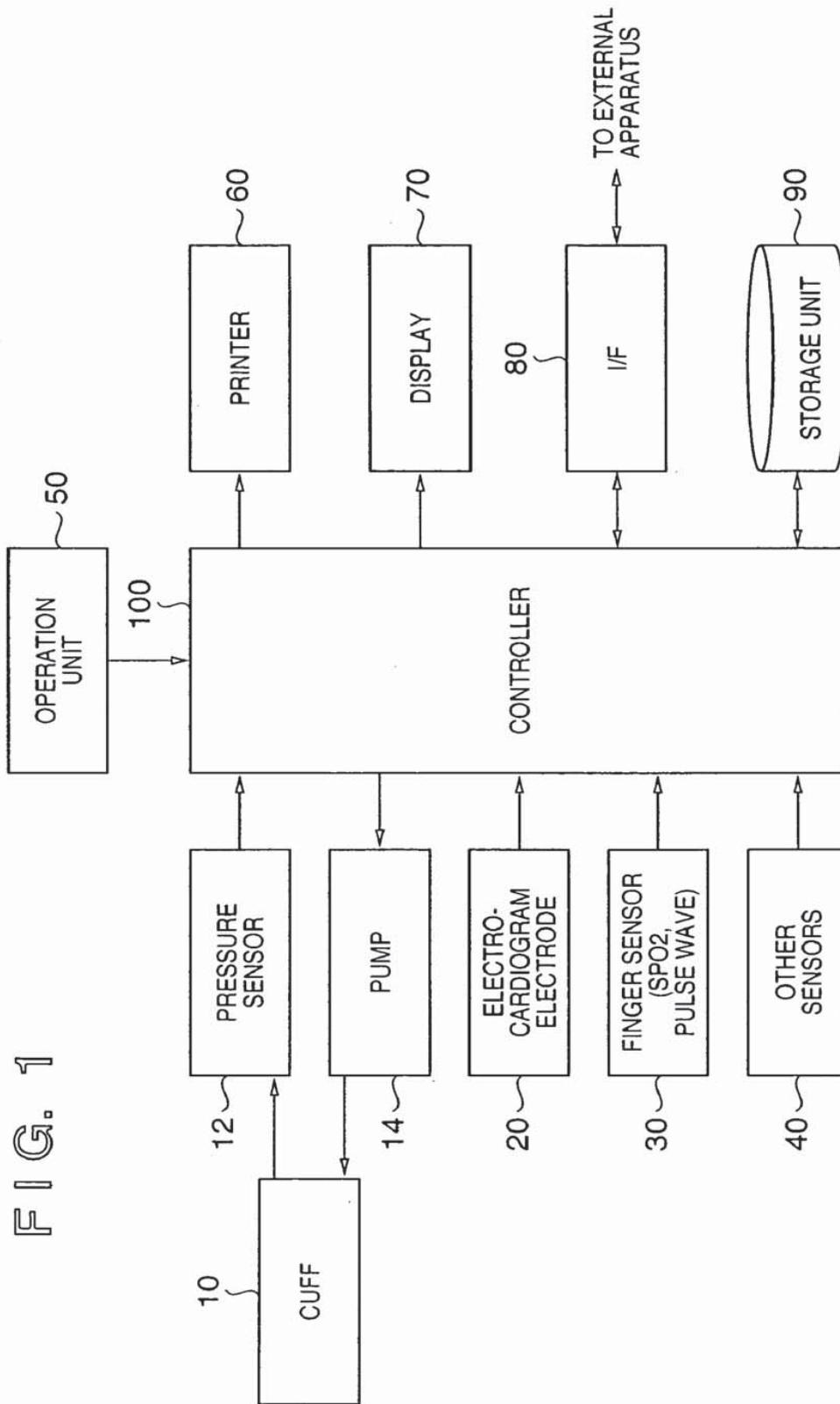


FIG. 2

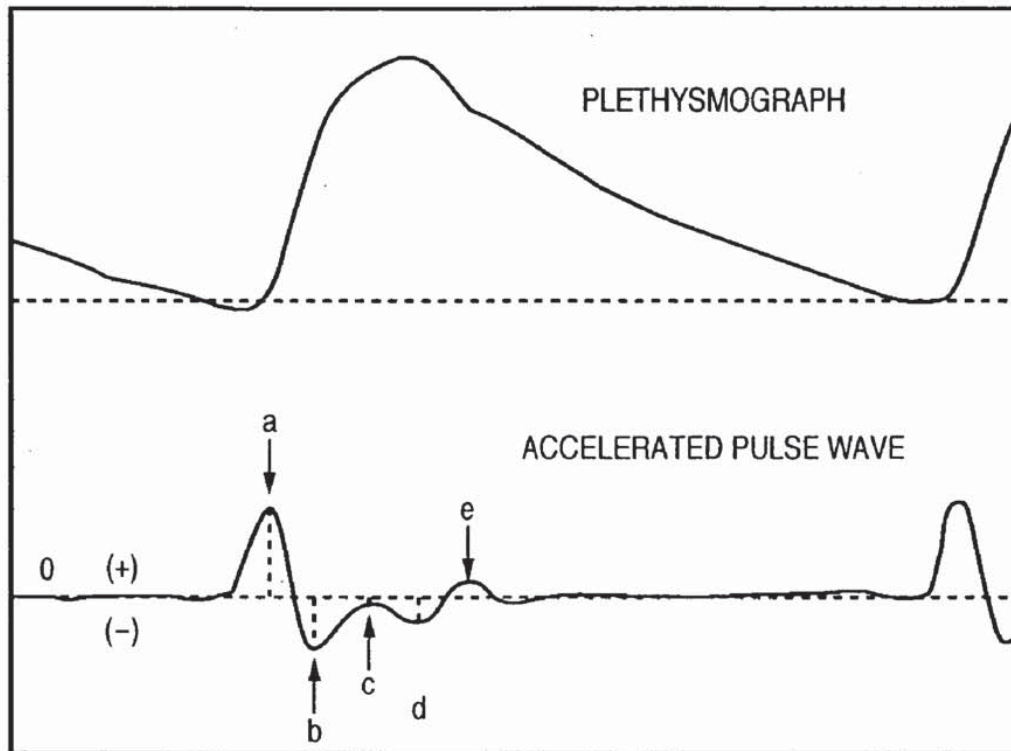


FIG. 3

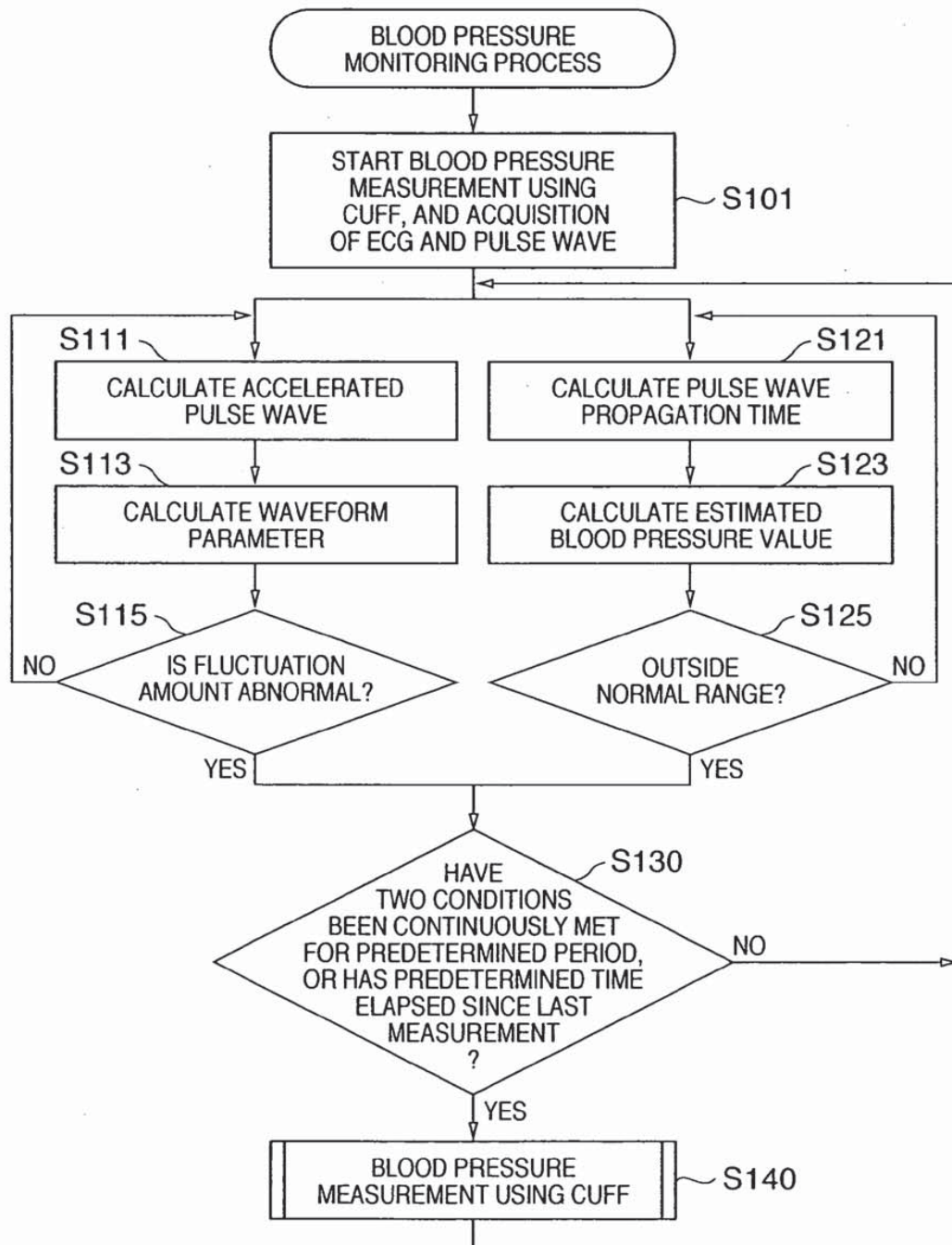
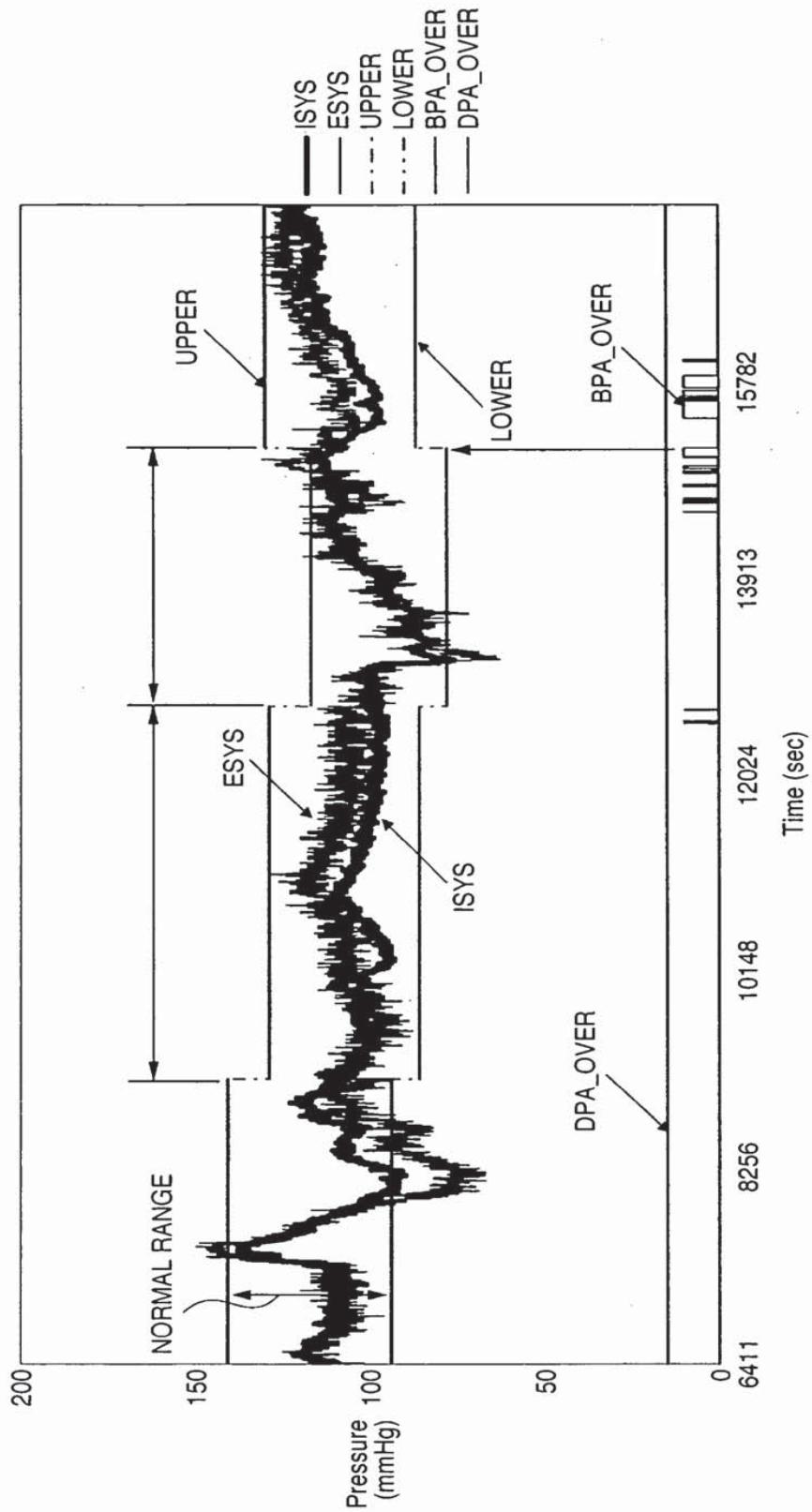


FIG. 4



Explore Litigation Insights

Docket Alarm provides insights to develop a more informed litigation strategy and the peace of mind of knowing you're on top of things.

Real-Time Litigation Alerts



Keep your litigation team up-to-date with **real-time alerts** and advanced team management tools built for the enterprise, all while greatly reducing PACER spend.

Our comprehensive service means we can handle Federal, State, and Administrative courts across the country.

Advanced Docket Research



With over 230 million records, Docket Alarm's cloud-native docket research platform finds what other services can't. Coverage includes Federal, State, plus PTAB, TTAB, ITC and NLRB decisions, all in one place.

Identify arguments that have been successful in the past with full text, pinpoint searching. Link to case law cited within any court document via Fastcase.

Analytics At Your Fingertips



Learn what happened the last time a particular judge, opposing counsel or company faced cases similar to yours.

Advanced out-of-the-box PTAB and TTAB analytics are always at your fingertips.

API

Docket Alarm offers a powerful API (application programming interface) to developers that want to integrate case filings into their apps.

LAW FIRMS

Build custom dashboards for your attorneys and clients with live data direct from the court.

Automate many repetitive legal tasks like conflict checks, document management, and marketing.

FINANCIAL INSTITUTIONS

Litigation and bankruptcy checks for companies and debtors.

E-DISCOVERY AND LEGAL VENDORS

Sync your system to PACER to automate legal marketing.