

United States Patent [19]

Viskochil

[11] **Patent Number:** **5,672,927**

[45] **Date of Patent:** **Sep. 30, 1997**

[54] **MOTOR WITH OVERMOLD COIL SUPPORT**

[75] **Inventor:** Stephen Viskochil, Los Gatos, Calif.

[73] **Assignee:** Quantum Corporation, Milpitas, Calif.

[21] **Appl. No.:** 490,962

[22] **Filed:** Jun. 15, 1995

[51] **Int. Cl.⁶** H02K 1/00; H02K 11/00;
H02K 1/12

[52] **U.S. Cl.** 310/194; 310/71; 310/254

[58] **Field of Search** 310/194, 51, 71,
310/89, 254, 67 R; 360/99.08

[56] **References Cited**

U.S. PATENT DOCUMENTS

3,780,323	12/1973	Swain	310/43
4,132,913	1/1979	Lautner et al	310/68 C
4,853,575	8/1989	Lessig, III	310/171

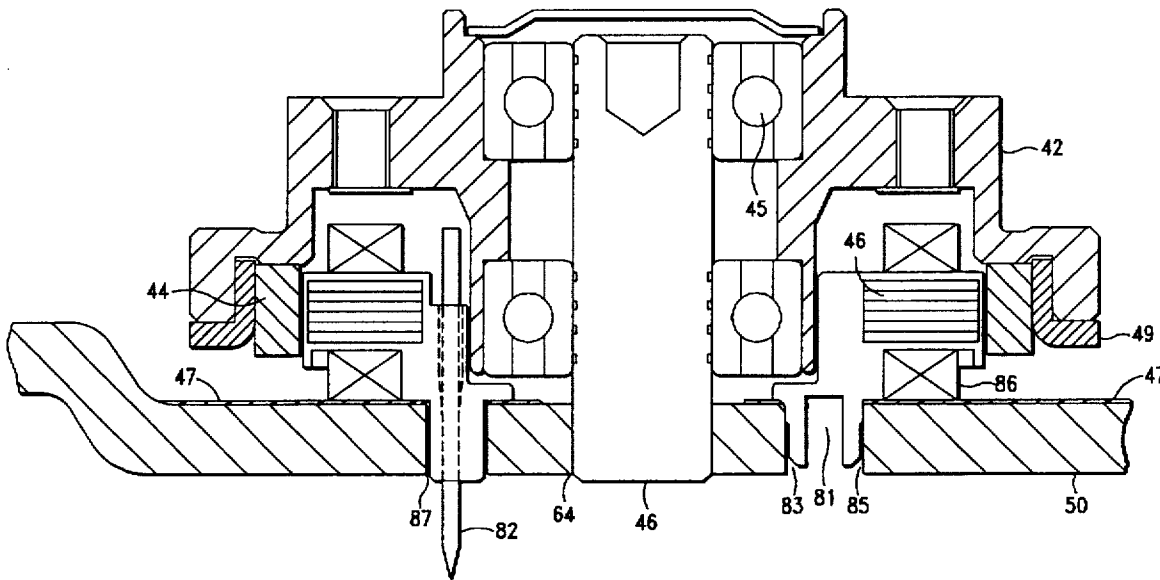
4,900,968	2/1990	Feigel et al.	310/260
4,975,611	12/1990	Rochester	310/194
5,073,735	12/1991	Takagi	310/71
5,097,168	3/1992	Takekoshi et al.	310/254
5,200,866	4/1993	Fruge et al.	360/99.08
5,237,471	8/1993	Cap et al.	360/97.01
5,254,892	10/1993	Bosman et al.	310/49 R

Primary Examiner—Steven L. Stephan
Assistant Examiner—Michael Wallace, Jr.
Attorney, Agent, or Firm—John C. Chen

[57] **ABSTRACT**

A motor assembly integrates a motor mounting structure and electrical connection parts achieving reduced motor component count and assembly cost. The motor assembly includes a mounting structure integrally formed into a motor coil support with plastic overmold. A plurality of connector pins are molded into the coil support for electrically coupling the motor to a printed circuit board (PCB).

10 Claims, 7 Drawing Sheets



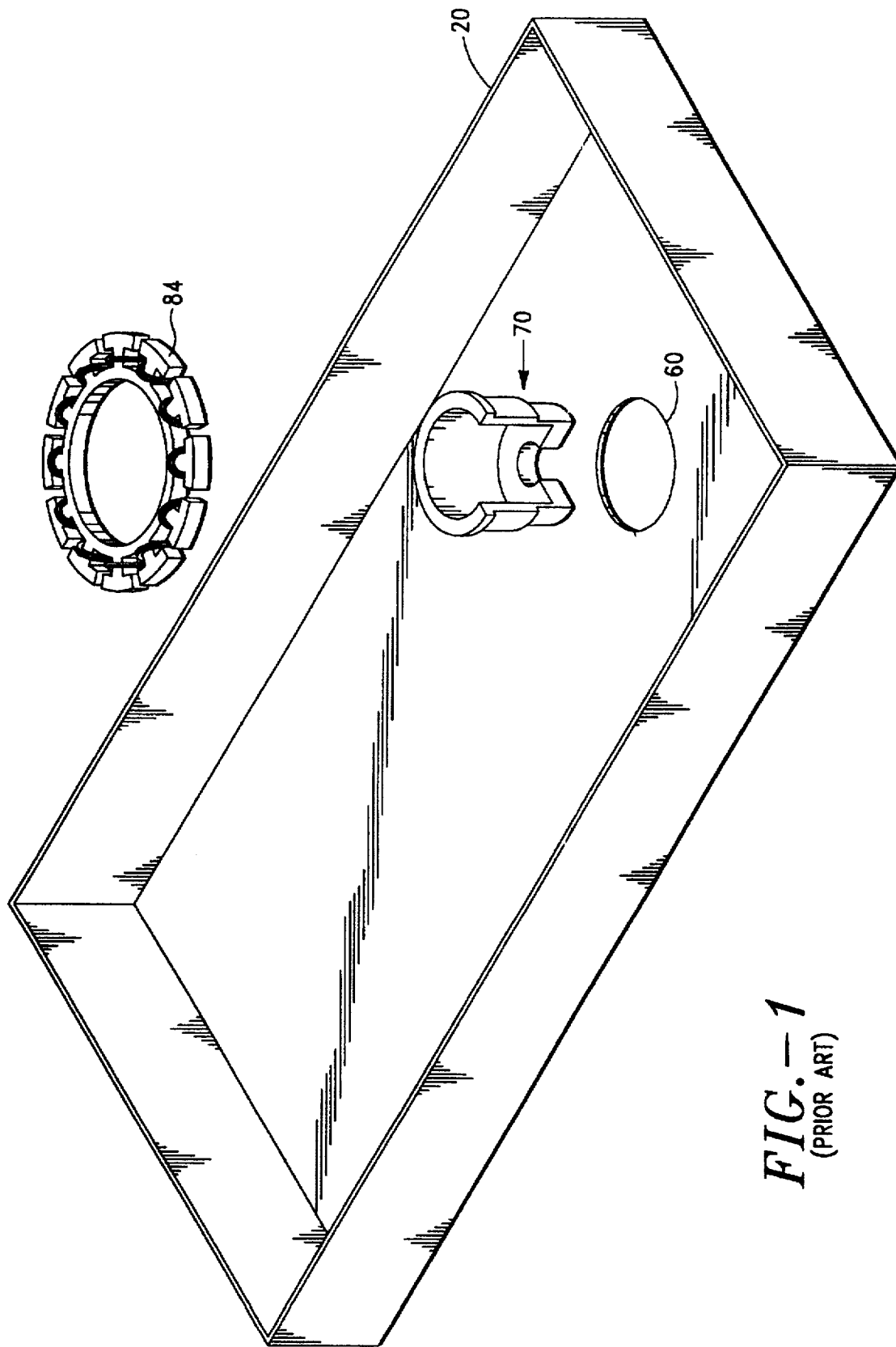


FIG. — 1
(PRIOR ART)

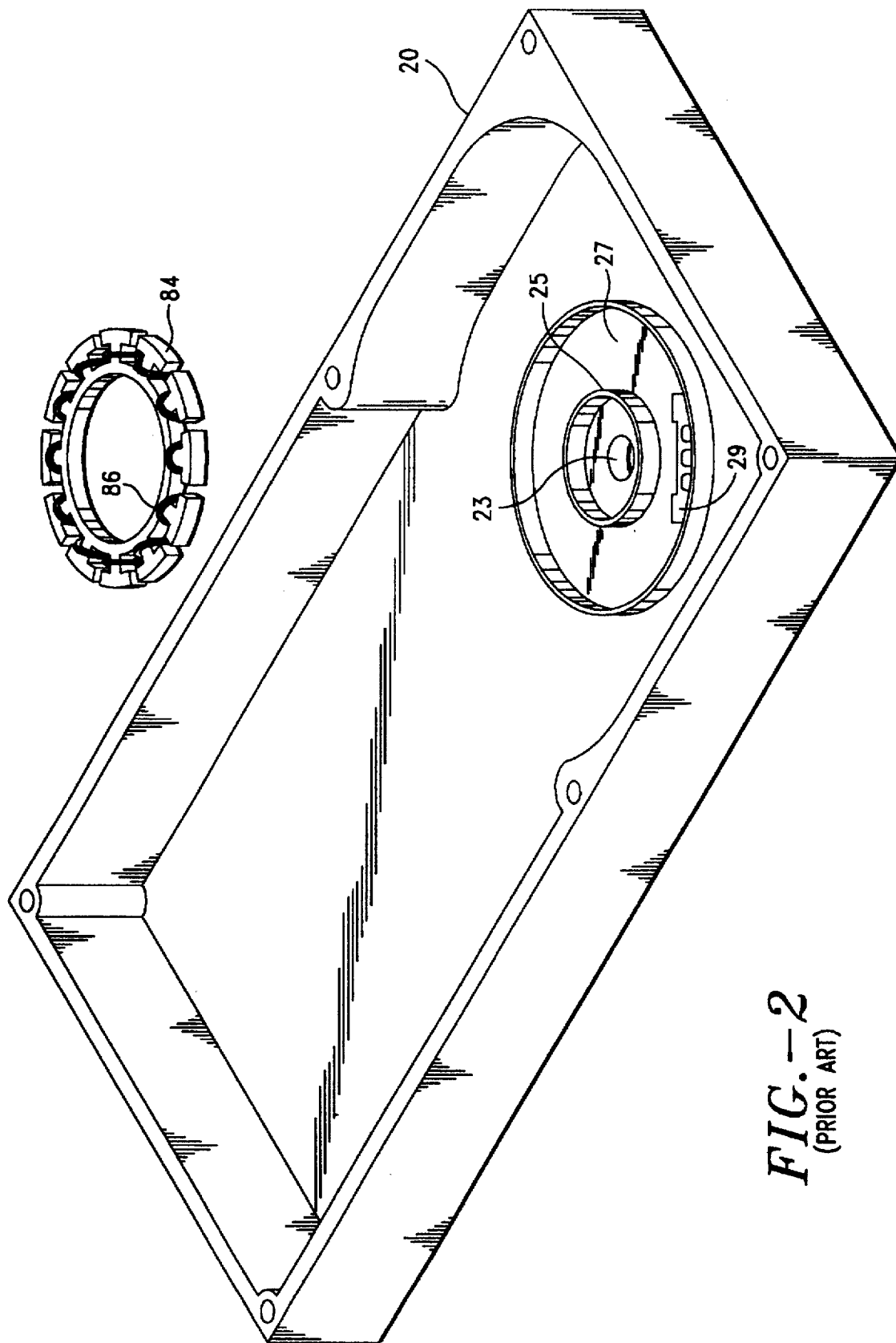


FIG. - 2
(PRIOR ART)

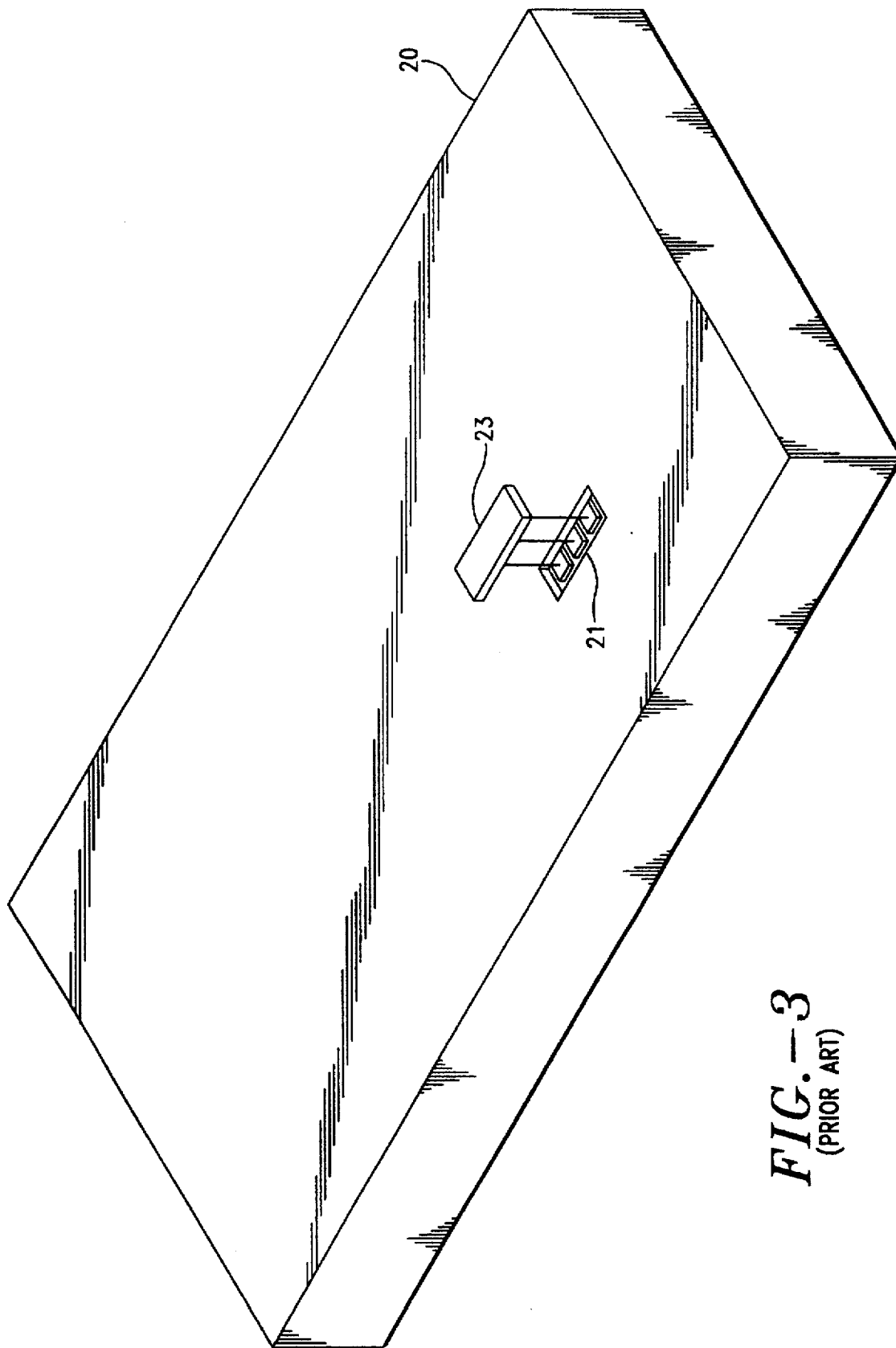


FIG. -3
(PRIOR ART)

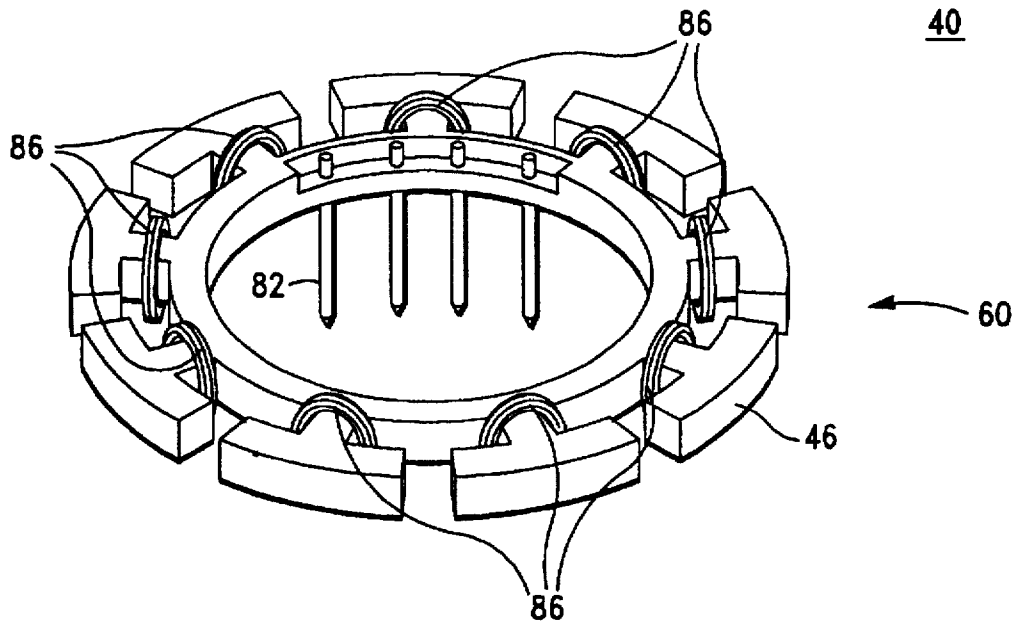
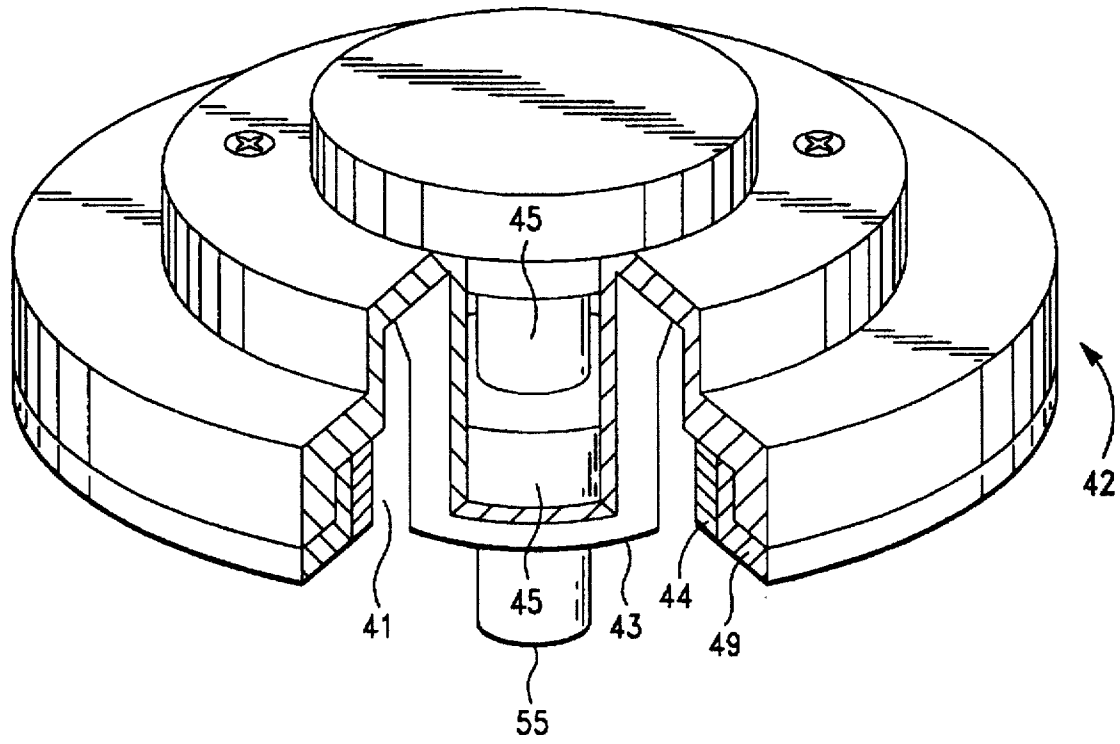


FIG.-4

Explore Litigation Insights

Docket Alarm provides insights to develop a more informed litigation strategy and the peace of mind of knowing you're on top of things.

Real-Time Litigation Alerts



Keep your litigation team up-to-date with **real-time alerts** and advanced team management tools built for the enterprise, all while greatly reducing PACER spend.

Our comprehensive service means we can handle Federal, State, and Administrative courts across the country.

Advanced Docket Research



With over 230 million records, Docket Alarm's cloud-native docket research platform finds what other services can't. Coverage includes Federal, State, plus PTAB, TTAB, ITC and NLRB decisions, all in one place.

Identify arguments that have been successful in the past with full text, pinpoint searching. Link to case law cited within any court document via Fastcase.

Analytics At Your Fingertips



Learn what happened the last time a particular judge, opposing counsel or company faced cases similar to yours.

Advanced out-of-the-box PTAB and TTAB analytics are always at your fingertips.

API

Docket Alarm offers a powerful API (application programming interface) to developers that want to integrate case filings into their apps.

LAW FIRMS

Build custom dashboards for your attorneys and clients with live data direct from the court.

Automate many repetitive legal tasks like conflict checks, document management, and marketing.

FINANCIAL INSTITUTIONS

Litigation and bankruptcy checks for companies and debtors.

E-DISCOVERY AND LEGAL VENDORS

Sync your system to PACER to automate legal marketing.