

Ex. 1010

US Patent No. 6,338,138 (“Raduchel”)

(12) **United States Patent**
Raduchel et al.

(10) **Patent No.:** **US 6,338,138 B1**
(45) **Date of Patent:** **Jan. 8, 2002**

(54) **NETWORK-BASED AUTHENTICATION OF COMPUTER USER**

(75) Inventors: **William J. Raduchel**, Palo Alto;
Abhay Gupta, Milipitas; **Yvonne Wilson**, Mountain View, all of CA (US)

(73) Assignee: **Sun Microsystems, Inc.**, Palo Alto, CA (US)

(*) Notice: Subject to any disclaimer, the term of this patent is extended or adjusted under 35 U.S.C. 154(b) by 0 days.

(21) Appl. No.: **09/106,304**

(22) Filed: **Jun. 29, 1998**

Related U.S. Application Data

(60) Provisional application No. 60/072,714, filed on Jan. 27, 1998.

(51) **Int. Cl.⁷** **H04L 9/00**

(52) **U.S. Cl.** **713/155; 713/152; 713/164; 713/183; 713/185; 705/65; 705/67; 705/72; 705/73; 380/232**

(58) **Field of Search** **713/159, 165, 713/166, 183, 185, 2, 152, 155, 164, 172; 705/67, 65, 72, 73; 380/232**

(56) **References Cited**

U.S. PATENT DOCUMENTS

| | | | | | |
|-----------|---|---|---------|---------------|------------|
| 4,962,449 | A | * | 10/1990 | Schlesinger | 364/200 |
| 5,237,614 | A | * | 8/1993 | Weiss | 380/23 |
| 5,666,293 | A | * | 9/1997 | Metz et al. | 395/200.5 |
| 5,768,539 | A | * | 6/1998 | Metz et al. | 395/200.79 |
| 5,771,291 | A | * | 6/1998 | Newton et al. | 380/25 |
| 5,787,177 | A | * | 7/1998 | Leppek | 380/25 |
| 5,802,530 | A | * | 9/1998 | Van Hoff | 707/513 |
| 5,812,819 | A | * | 9/1998 | Rodwin et al. | 395/500 |
| 5,841,970 | A | * | 11/1998 | Tabuki | 395/187.01 |
| 5,892,905 | A | * | 4/1999 | Brandt et al. | 395/187.01 |

(List continued on next page.)

FOREIGN PATENT DOCUMENTS

| | | | | | | |
|----|-------------|----|---|---------|-------|------------|
| DE | 196 10 314 | A1 | * | 9/1997 | | G06F/12/14 |
| EP | 0 798 655 | A2 | * | 1/1997 | | G06F/17/30 |
| EP | 0 798 655 | A2 | | 10/1997 | | |
| WO | WO 96/42041 | | | 12/1996 | | |
| WO | 96/42041 | | * | 12/1996 | | |

OTHER PUBLICATIONS

Windows NT Security Handbook (Tom Sheldon, 1997, pp. 83–85).*

Distributed Systems Concepts and Design, Second Edition, G. Coulouris et al., pp. 221–233, 1996.

Primary Examiner—Albert Decady

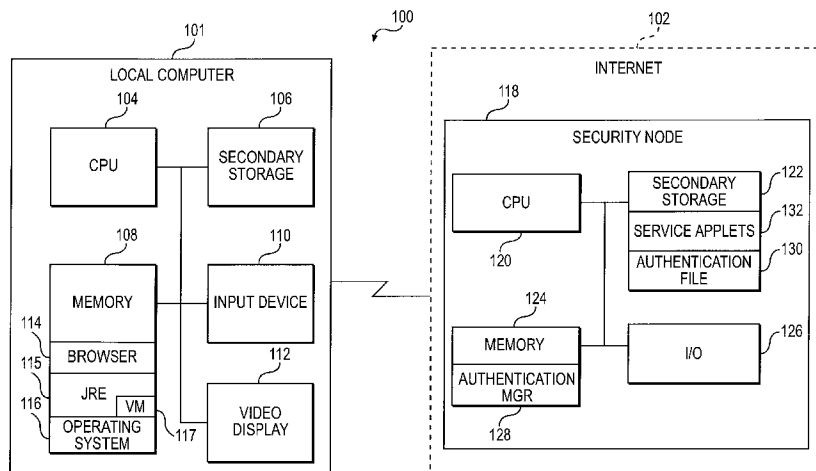
Assistant Examiner—Paul Callahan

(74) *Attorney, Agent, or Firm*—Finnegan, Henderson, Farabow, Garrett & Dunner, L.L.P.

(57) **ABSTRACT**

A network-based authentication scheme is provided that performs authentication in a centralized manner for the stand-alone computers of a particular organization. Since authentication is centralized, the individual computers do not need to store authentication information, and control over all of the computers rests in a single location, enabling the system administrator to manage access and utilization of the computers from this location. The network-based authentication scheme includes an authentication manager, remotely located with respect to a local computer, that performs authentication for the local computer. The authentication manager receives login information from the local computer, verifies this information against an authentication file, and returns indications of the services on the local computer that the user is able to utilize. The local computer receives these indications and displays icons representing the services available to that user. The user may then select an icon, causing an applet to be downloaded from the authentication manager onto the local computer to facilitate the user's utilization of the corresponding service.

25 Claims, 6 Drawing Sheets



U.S. PATENT DOCUMENTS

| | | | | | | | | | | | |
|-------------|---|---------|-----------------|-------|---------|-------------|---|---------|-----------------|-------|---------|
| 5,953,005 A | * | 9/1999 | Liu | | 345/302 | 6,005,568 A | * | 12/1999 | Simonoff et al. | | 345/335 |
| 5,958,016 A | * | 9/1999 | Chang et al. | | 709/229 | 6,012,100 A | * | 1/2000 | Frailong et la. | | 709/250 |
| 5,978,834 A | * | 11/1999 | Simonoff et al. | | 709/203 | 6,049,877 A | * | 4/2000 | White | | 713/201 |
| 5,978,855 A | * | 11/1999 | Metz et al. | | 709/249 | 6,070,243 A | * | 5/2000 | See et al. | | 713/201 |
| 5,987,506 A | * | 11/1999 | Carter et al. | | 709/213 | 6,115,471 A | * | 9/2000 | Oki et al. | | 380/342 |
| 5,987,611 A | * | 11/1999 | Freund | | 713/201 | 6,125,384 A | * | 9/2000 | Brandt et al. | | 709/203 |

* cited by examiner

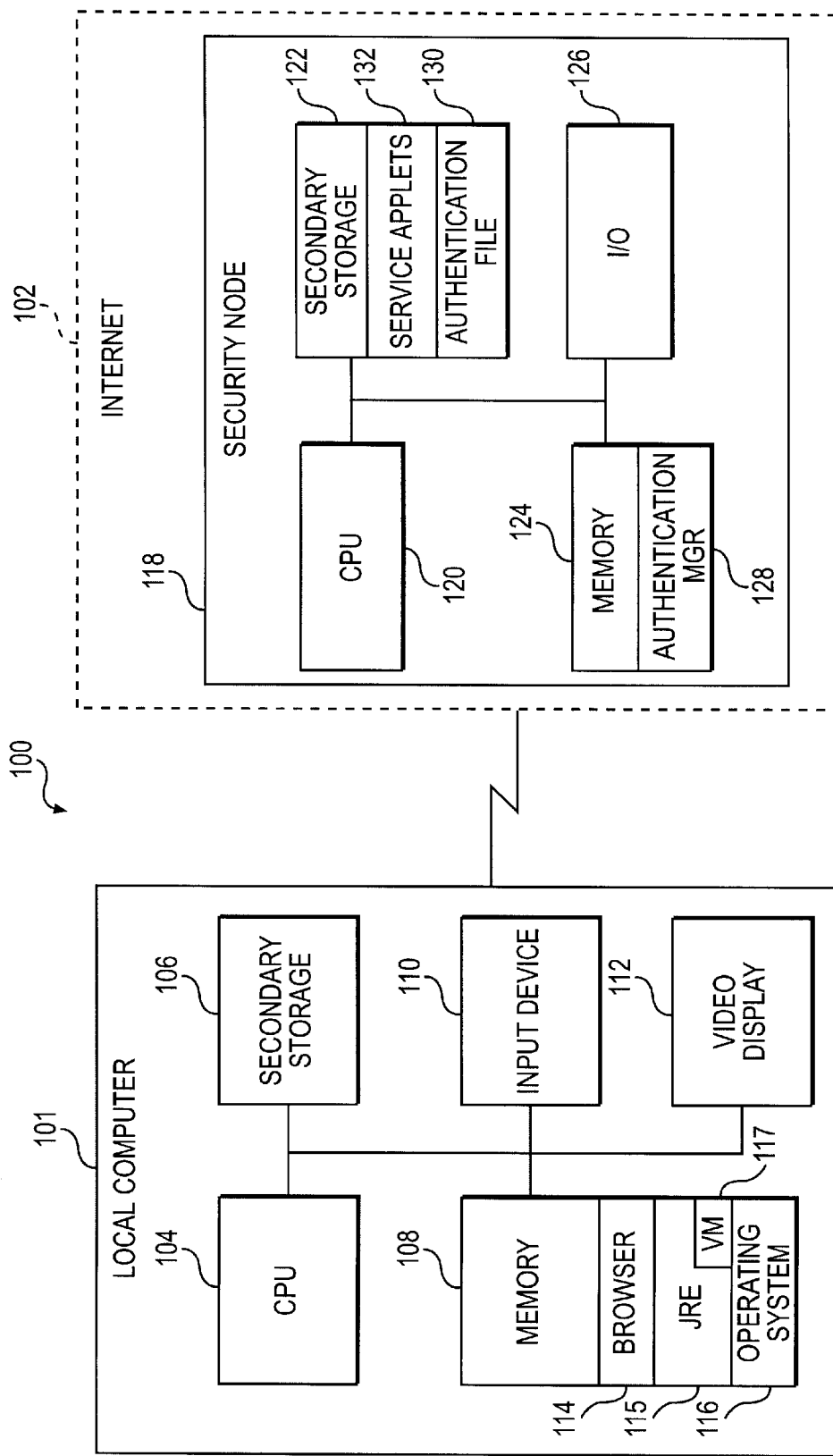


FIG. 1

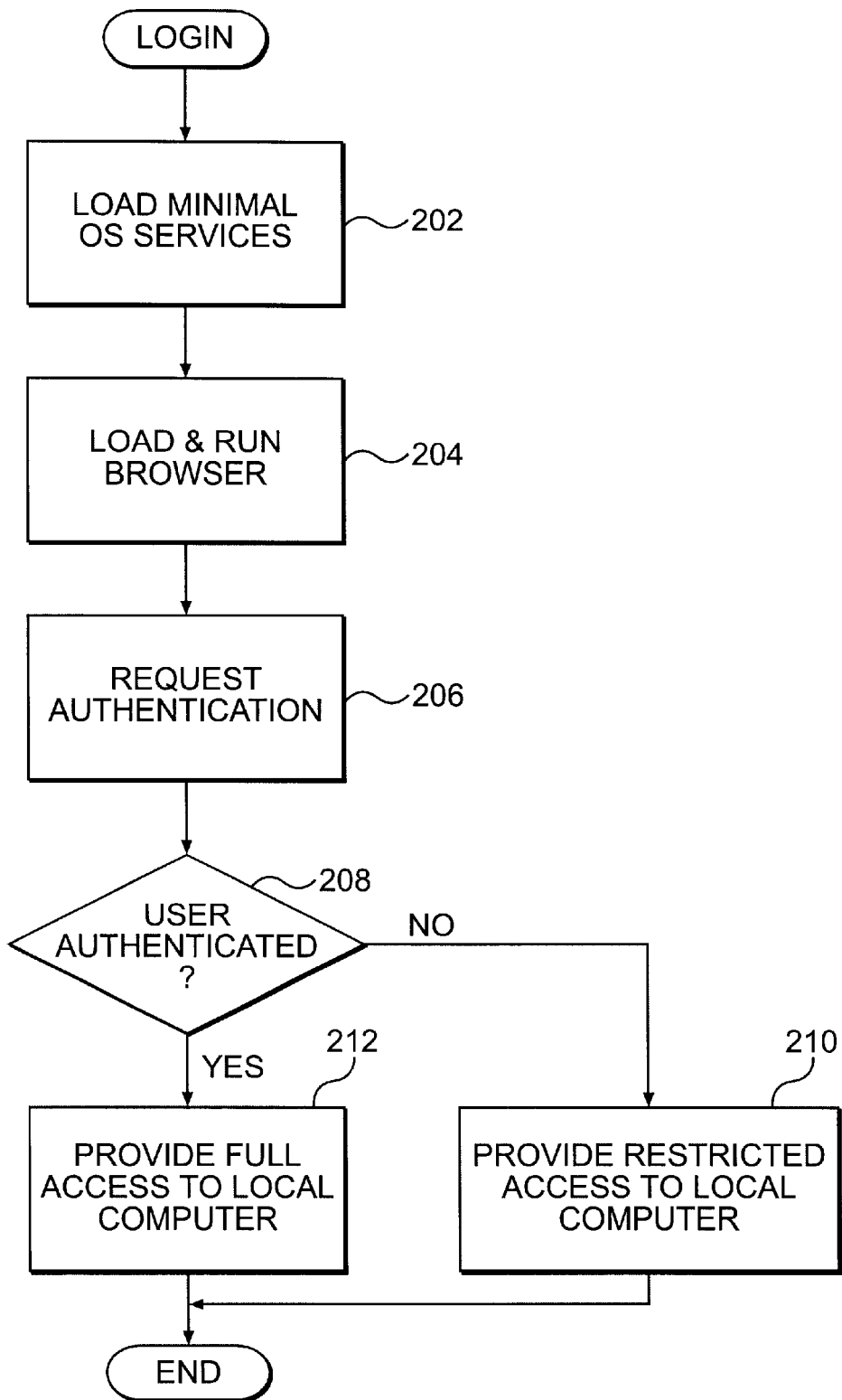


FIG. 2

Explore Litigation Insights

Docket Alarm provides insights to develop a more informed litigation strategy and the peace of mind of knowing you're on top of things.

Real-Time Litigation Alerts



Keep your litigation team up-to-date with **real-time alerts** and advanced team management tools built for the enterprise, all while greatly reducing PACER spend.

Our comprehensive service means we can handle Federal, State, and Administrative courts across the country.

Advanced Docket Research



With over 230 million records, Docket Alarm's cloud-native docket research platform finds what other services can't. Coverage includes Federal, State, plus PTAB, TTAB, ITC and NLRB decisions, all in one place.

Identify arguments that have been successful in the past with full text, pinpoint searching. Link to case law cited within any court document via Fastcase.

Analytics At Your Fingertips



Learn what happened the last time a particular judge, opposing counsel or company faced cases similar to yours.

Advanced out-of-the-box PTAB and TTAB analytics are always at your fingertips.

API

Docket Alarm offers a powerful API (application programming interface) to developers that want to integrate case filings into their apps.

LAW FIRMS

Build custom dashboards for your attorneys and clients with live data direct from the court.

Automate many repetitive legal tasks like conflict checks, document management, and marketing.

FINANCIAL INSTITUTIONS

Litigation and bankruptcy checks for companies and debtors.

E-DISCOVERY AND LEGAL VENDORS

Sync your system to PACER to automate legal marketing.