



**United States Patent** [19]  
**Sabbaghian et al.**

[11] **Patent Number:** **5,918,511**  
[45] **Date of Patent:** **Jul. 6, 1999**

- [54] **ADJUSTABLE SOCKET WRENCH**
- [75] Inventors: **Mehdy Sabbaghian**, Baton Rouge, La.;  
**Bryan Hivnor**, Beaumont, Tex.;  
**Gerard Soignet**; **Brian Mayeaux**, both  
of Houston, Tex.; **Wyndham Payne**,  
Nashville, Tenn.
- [73] Assignee: **Board of Supervisors of Louisiana  
State University and Agricultural and  
Mechanical College**, Baton Rouge, La.

3,664,213	5/1972	Anati .	
3,724,299	4/1973	Nelson .....	81/128
4,366,733	1/1983	Colvin .....	81/128
4,546,678	10/1985	Stuckey .	
4,578,982	4/1986	Schrock .	
5,249,490	10/1993	Kennel .	
5,261,263	11/1993	Whitesell .	

**FOREIGN PATENT DOCUMENTS**

9034	9/1879	Germany .....	81/128
------	--------	---------------	--------

*Primary Examiner*—James G. Smith  
*Attorney, Agent, or Firm*—Roy, Kiesel & Tucker

- [21] Appl. No.: **08/919,995**
- [22] Filed: **Aug. 28, 1997**
- [51] **Int. Cl.<sup>6</sup>** ..... **B25B 13/12**
- [52] **U.S. Cl.** ..... **81/128; 81/129**
- [58] **Field of Search** ..... 87/128, 129

[57] **ABSTRACT**

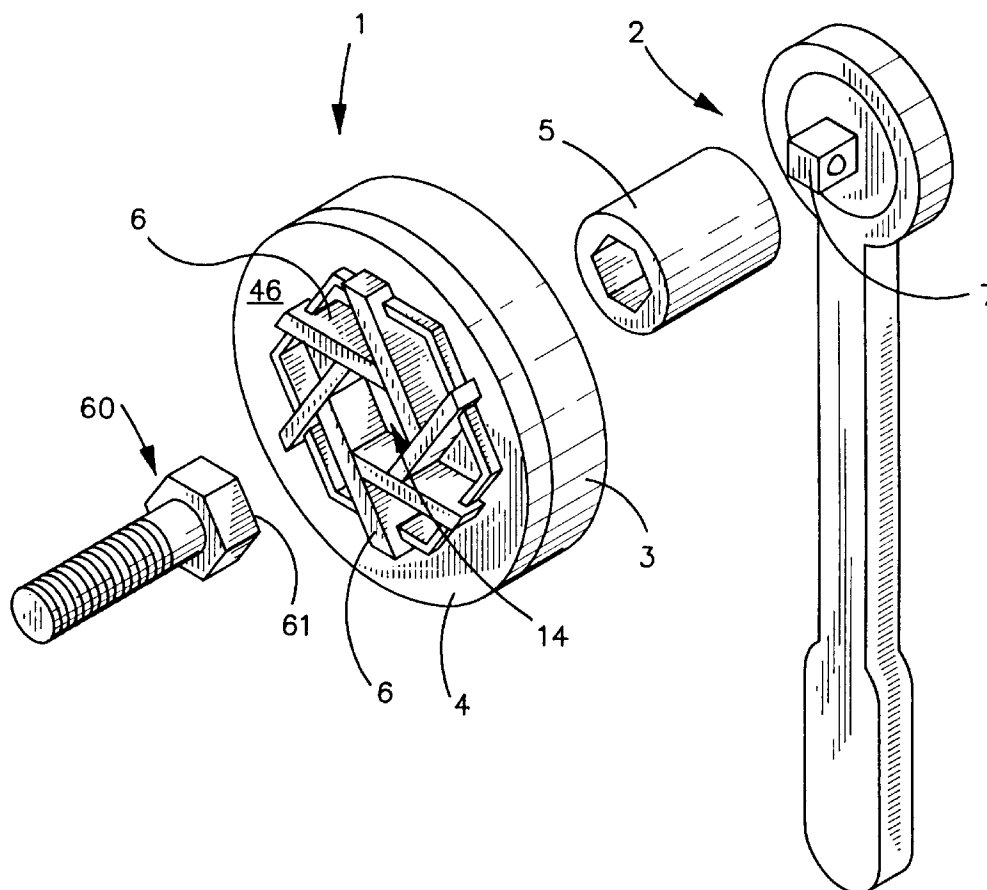
The present invention provides an adjustable socket for a socket wrench. In a preferred embodiment, the adjustable socket comprises a base plate and a collar plate rotatably attached to the base plate. The collar plate has a central opening formed by a plurality of internal sidewalls and there are movably positioned inside the central opening a plurality of gripping members. Each of the gripping members has a contacting surface which cumulatively define a gripping region. Furthermore, each of the gripping members is connected to the base plate and has a first end adapted to engage one of the internal sidewalls such that relative rotation of the base plate and the collar plate adjusts the gripping region.

[56] **References Cited**

**U.S. PATENT DOCUMENTS**

122,638	1/1872	Neames .	
857,220	6/1907	Zanto .	
1,531,377	3/1925	Clarke .	
2,392,931	1/1946	Lundeen .	
2,582,444	1/1952	Lucht .....	81/128
2,884,826	5/1959	Bruhn .....	81/128

**21 Claims, 5 Drawing Sheets**



**EDWARDS LIFESCIENCES EX 1213**

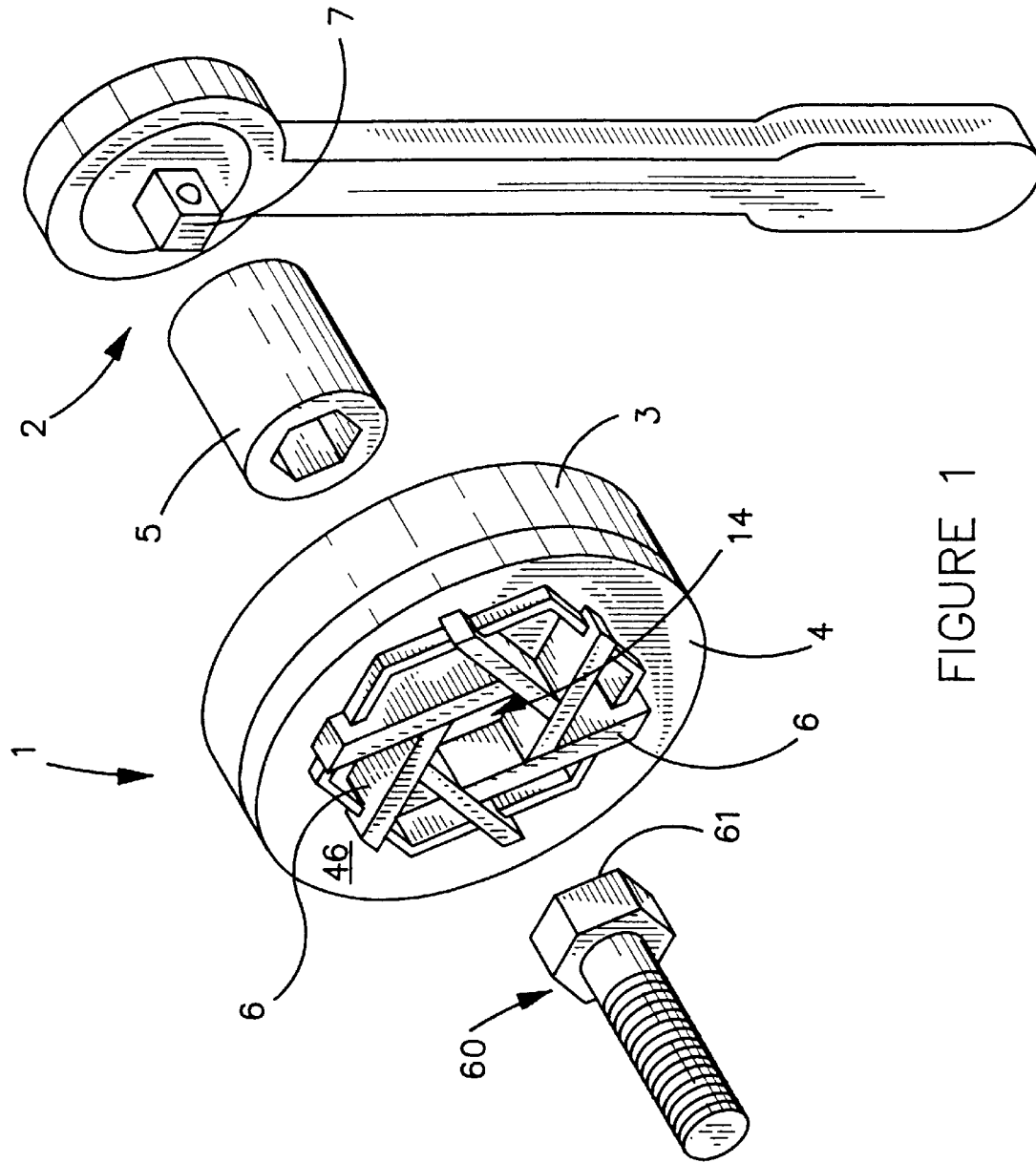


FIGURE 1

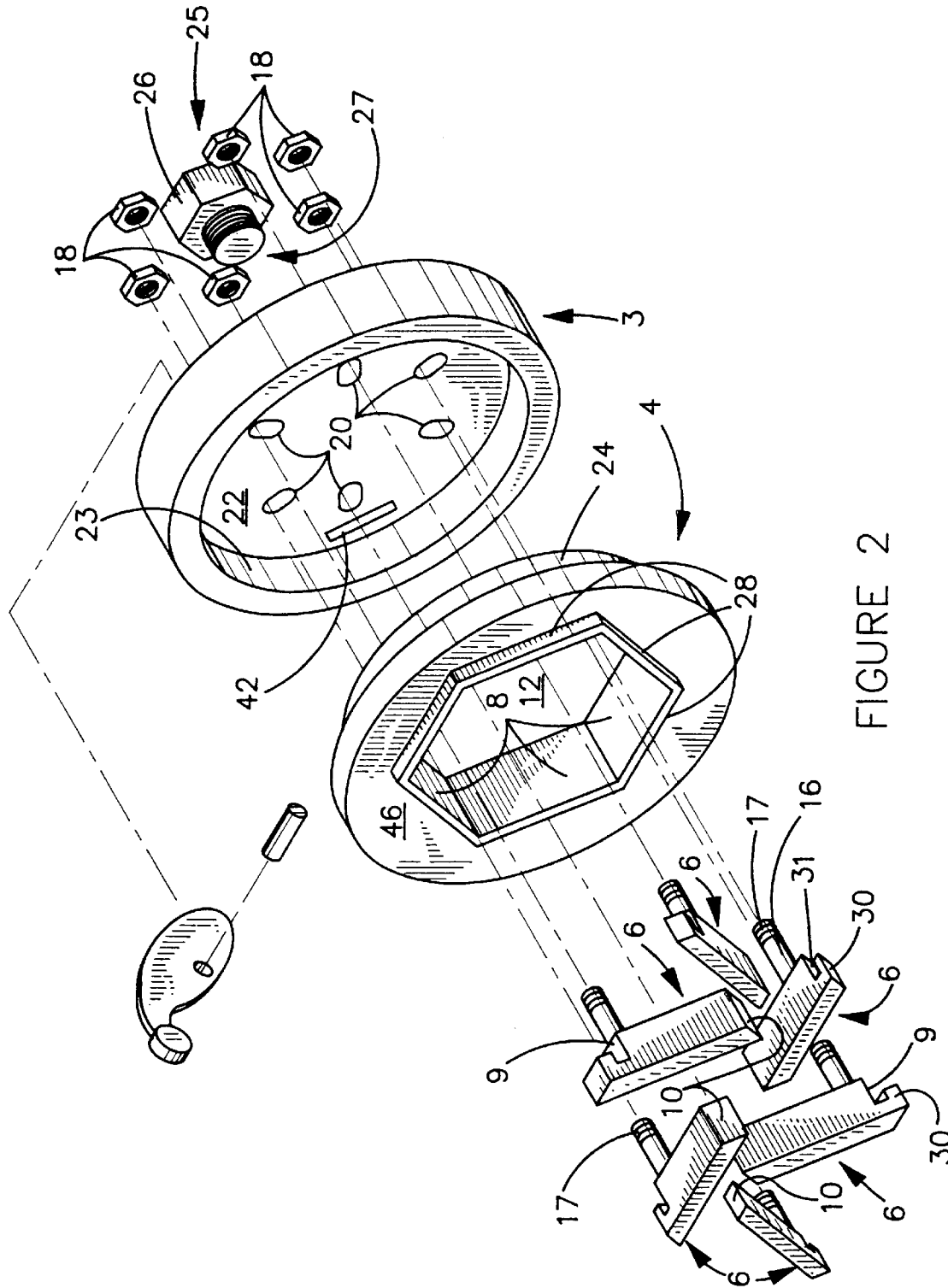


FIGURE 2

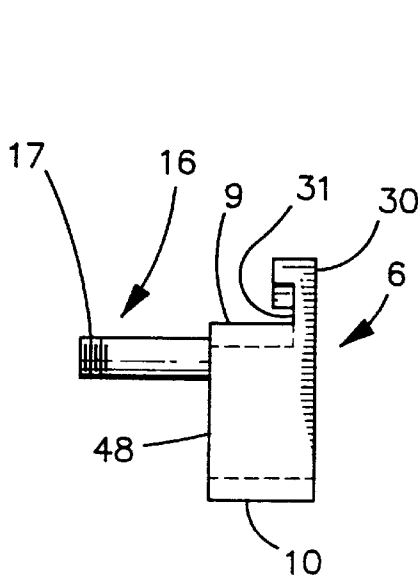


FIGURE 6

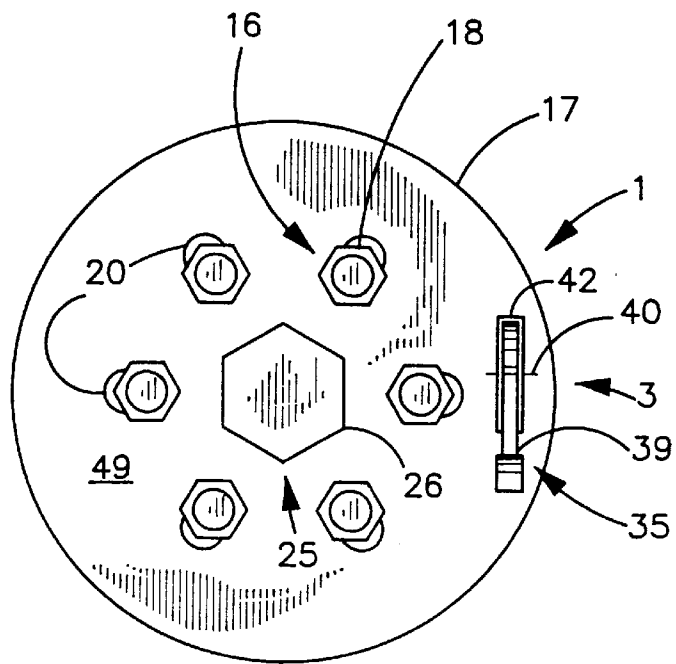


FIGURE 5

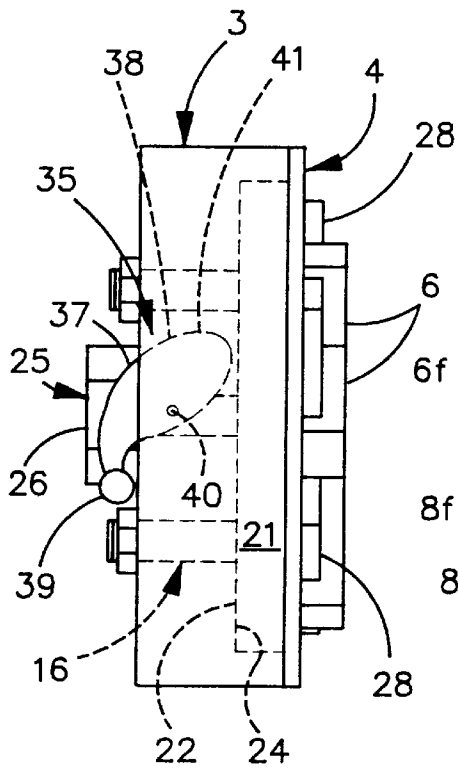


FIGURE 4

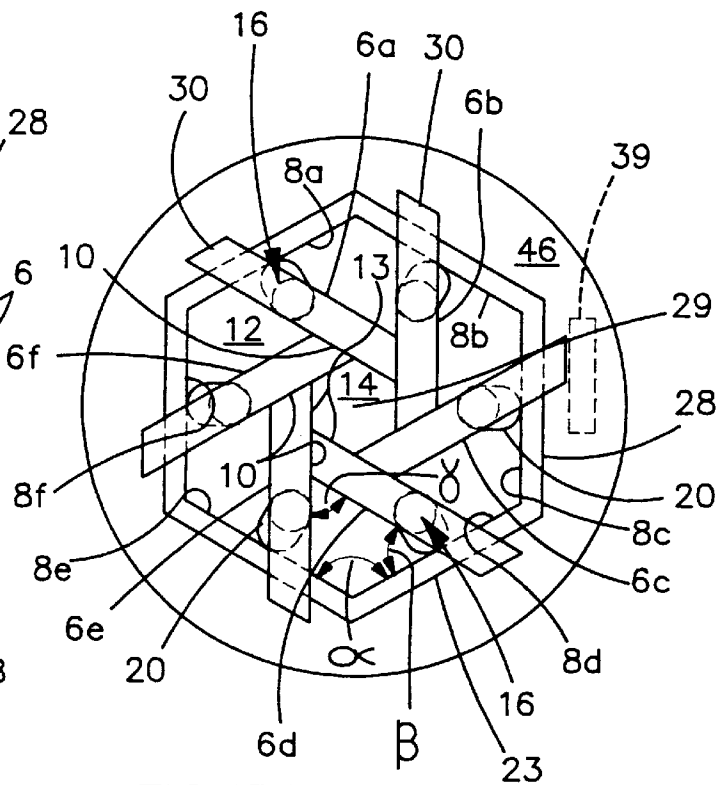


FIGURE 3

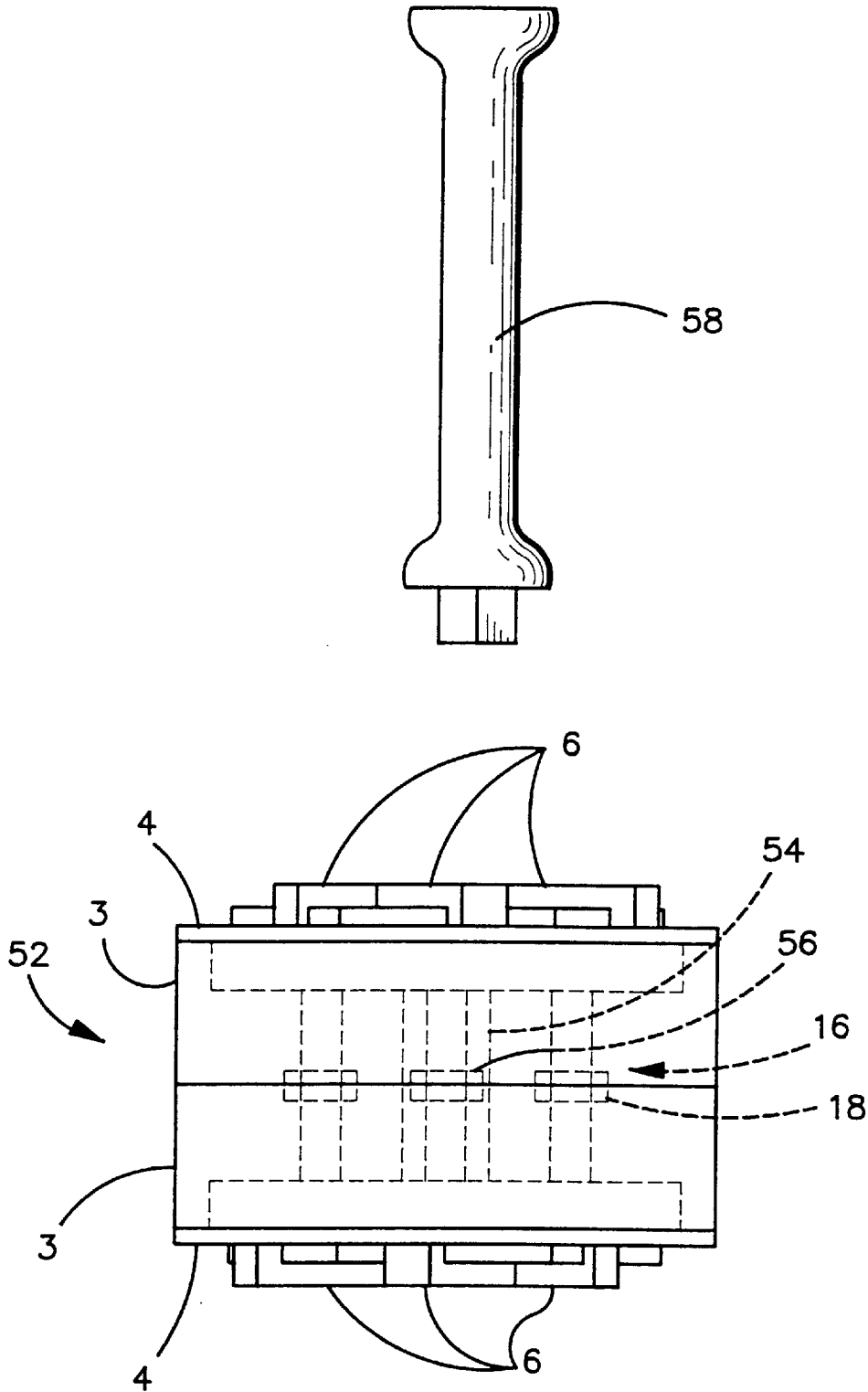


FIGURE 7

# Explore Litigation Insights

Docket Alarm provides insights to develop a more informed litigation strategy and the peace of mind of knowing you're on top of things.

## Real-Time Litigation Alerts



Keep your litigation team up-to-date with **real-time alerts** and advanced team management tools built for the enterprise, all while greatly reducing PACER spend.

Our comprehensive service means we can handle Federal, State, and Administrative courts across the country.

## Advanced Docket Research



With over 230 million records, Docket Alarm's cloud-native docket research platform finds what other services can't. Coverage includes Federal, State, plus PTAB, TTAB, ITC and NLRB decisions, all in one place.

Identify arguments that have been successful in the past with full text, pinpoint searching. Link to case law cited within any court document via Fastcase.

## Analytics At Your Fingertips



Learn what happened the last time a particular judge, opposing counsel or company faced cases similar to yours.

Advanced out-of-the-box PTAB and TTAB analytics are always at your fingertips.

## API

Docket Alarm offers a powerful API (application programming interface) to developers that want to integrate case filings into their apps.

## LAW FIRMS

Build custom dashboards for your attorneys and clients with live data direct from the court.

Automate many repetitive legal tasks like conflict checks, document management, and marketing.

## FINANCIAL INSTITUTIONS

Litigation and bankruptcy checks for companies and debtors.

## E-DISCOVERY AND LEGAL VENDORS

Sync your system to PACER to automate legal marketing.