

[54] **ELECTRONIC LICENSING SYSTEM**

[75] Inventor: **James E. Olsen**, Park City, Utah

[73] Assignee: **Novell, Inc.**, Orem, Utah

[21] Appl. No.: **620,319**

[22] Filed: **Mar. 15, 1996**

[51] Int. Cl.⁶ **H04L 9/00**

[52] U.S. Cl. **395/187.01; 395/188.01; 395/186; 380/4; 380/25**

[58] Field of Search **395/187.01, 186, 395/188.01, 609; 380/4, 25**

[56] **References Cited**

U.S. PATENT DOCUMENTS

| | | | |
|-----------|---------|-----------------------|------------|
| 4,870,568 | 9/1989 | Kahle et al. | 395/605 |
| 4,924,378 | 5/1990 | Hershey | 395/187.01 |
| 4,937,863 | 6/1990 | Robert et al. | 380/4 |
| 4,941,175 | 7/1990 | Enescu et al. | 380/4 |
| 5,023,907 | 6/1991 | Johnson et al. | 380/4 |
| 5,047,928 | 9/1991 | Wiedemer | 380/4 |
| 5,103,476 | 4/1992 | Waite et al. | 380/4 |
| 5,138,712 | 8/1992 | Corbin | 395/186 |
| 5,182,770 | 1/1993 | Medveczky et al. | 380/4 |
| 5,187,770 | 2/1993 | Mishima et al. | 385/145 |
| 5,201,048 | 4/1993 | Coulter et al. | 395/603 |
| 5,204,897 | 4/1993 | Wyman | 380/4 |
| 5,222,134 | 6/1993 | Waite et al. | 380/4 |
| 5,260,999 | 11/1993 | Wyman | 380/4 |
| 5,265,065 | 11/1993 | Turtle | 395/604 |
| 5,278,980 | 1/1994 | Pedersen et al. | 395/604 |
| 5,287,408 | 2/1994 | Samson | 380/4 |
| 5,319,705 | 6/1994 | Halter et al. | 380/4 |
| 5,343,526 | 8/1994 | Lassers | 380/4 |

| | | | |
|-----------|---------|----------------------|-----------|
| 5,343,527 | 8/1994 | Moore | 380/4 |
| 5,349,642 | 9/1994 | Kingdon | 380/25 |
| 5,371,792 | 12/1994 | Asai et al. | 380/3 |
| 5,375,206 | 12/1994 | Hunter et al. | 395/712 |
| 5,386,369 | 1/1995 | Christiano | 364/464.1 |
| 5,438,508 | 8/1995 | Wyman | 395/208 |
| 5,500,513 | 3/1996 | Langhans et al. | 235/380 |
| 5,553,139 | 9/1996 | Ross et al. | 380/4 |
| 5,579,222 | 11/1996 | Bains et al. | 395/712 |
| 5,621,201 | 4/1997 | Langhans et al. | 235/380 |

FOREIGN PATENT DOCUMENTS

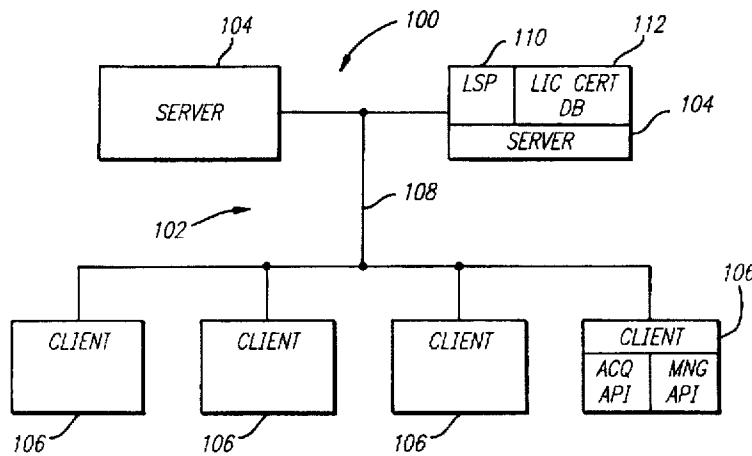
| | | |
|-------------|---------|-------------|
| A-38209 | 4/1993 | Australia . |
| A-48113 | 3/1994 | Australia . |
| WO 89/04520 | 5/1989 | WIPO . |
| WO 92/20021 | 11/1992 | WIPO . |

Primary Examiner—Robert W. Beausoliel, Jr.
Assistant Examiner—Ly V. Hua
Attorney, Agent, or Firm—Snell & Wilmer, L.L.P.

[57] **ABSTRACT**

A licensing system provides enhanced flexibility for licensing applications in a network. The licensing system includes a license certificate database which stores all license information. The license certificate database is accessed by providing a request to a license service provider associated with a server. The license service provider generates an executable entity based on the request parameters, which searches the database and, if the appropriate units are available, assembles a license. The license and the application are then transmitted to the requesting client. All aspects of the transaction are also stored in a database organized according to a transaction's relation to a particular license.

19 Claims, 6 Drawing Sheets



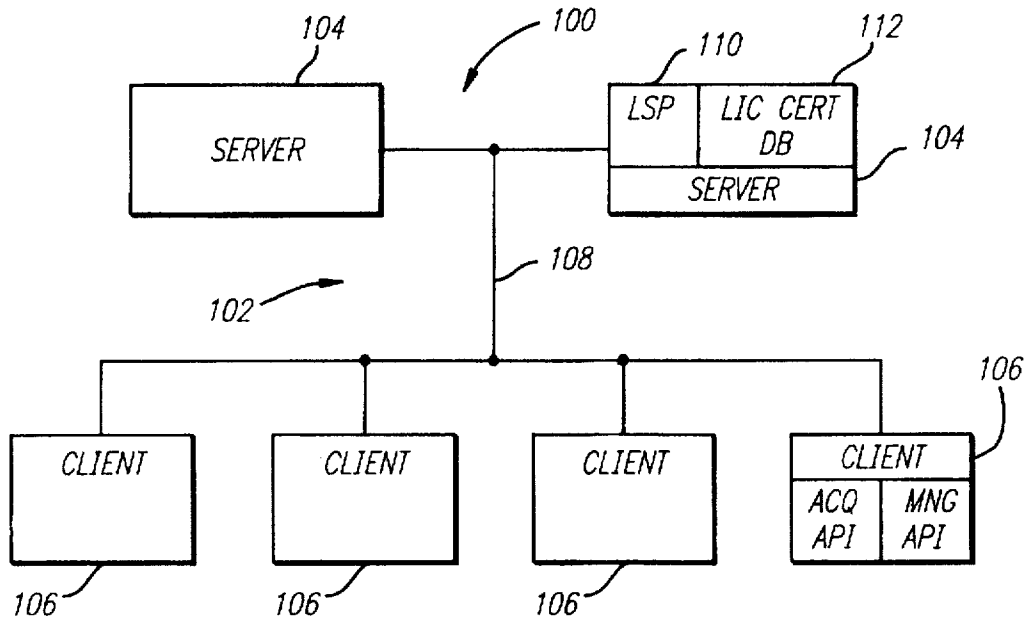


FIG. 1

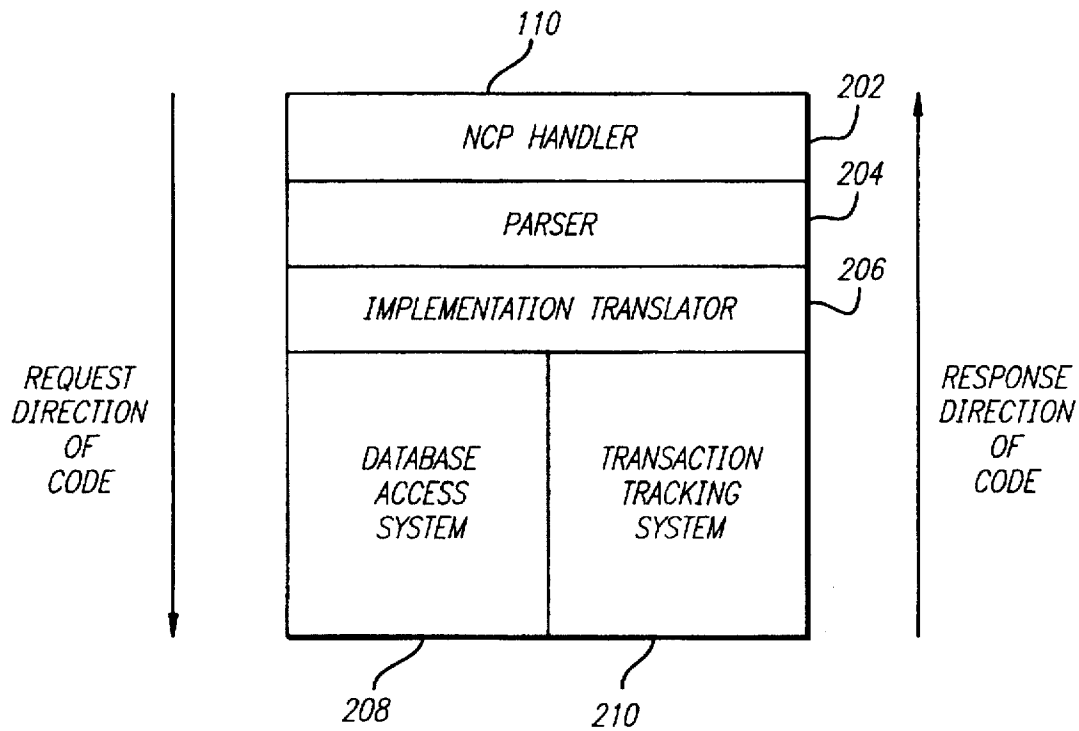


FIG. 2

FIG. 3

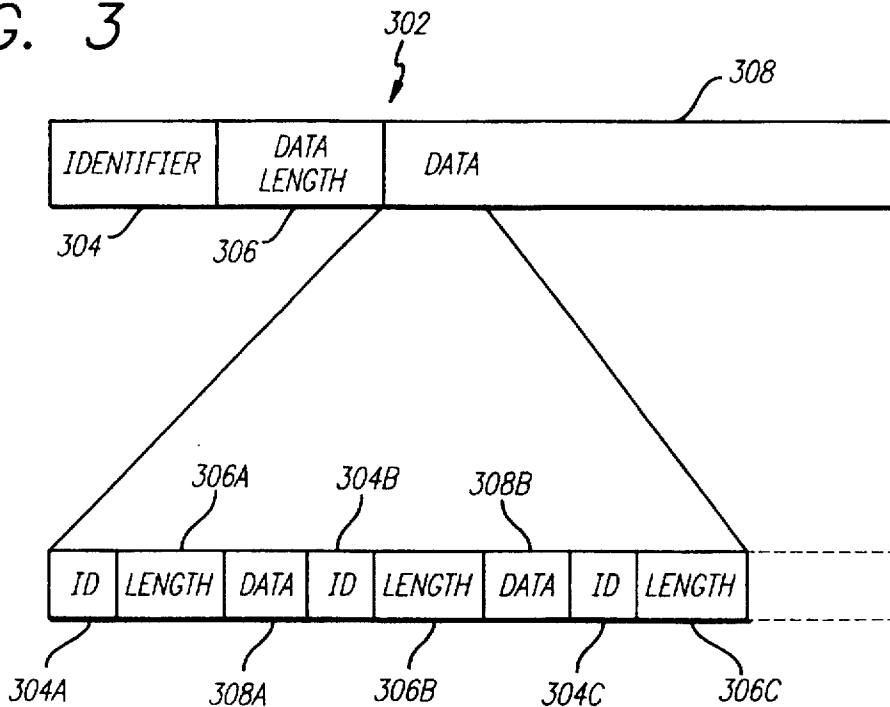


FIG. 4

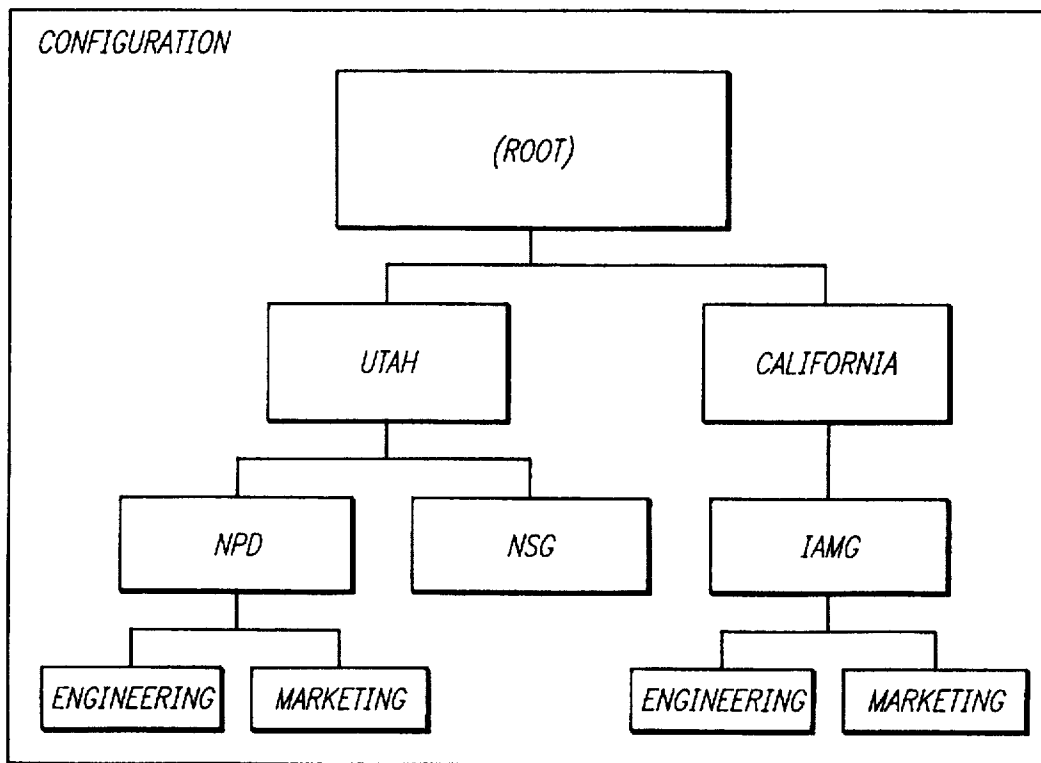


FIG. 5

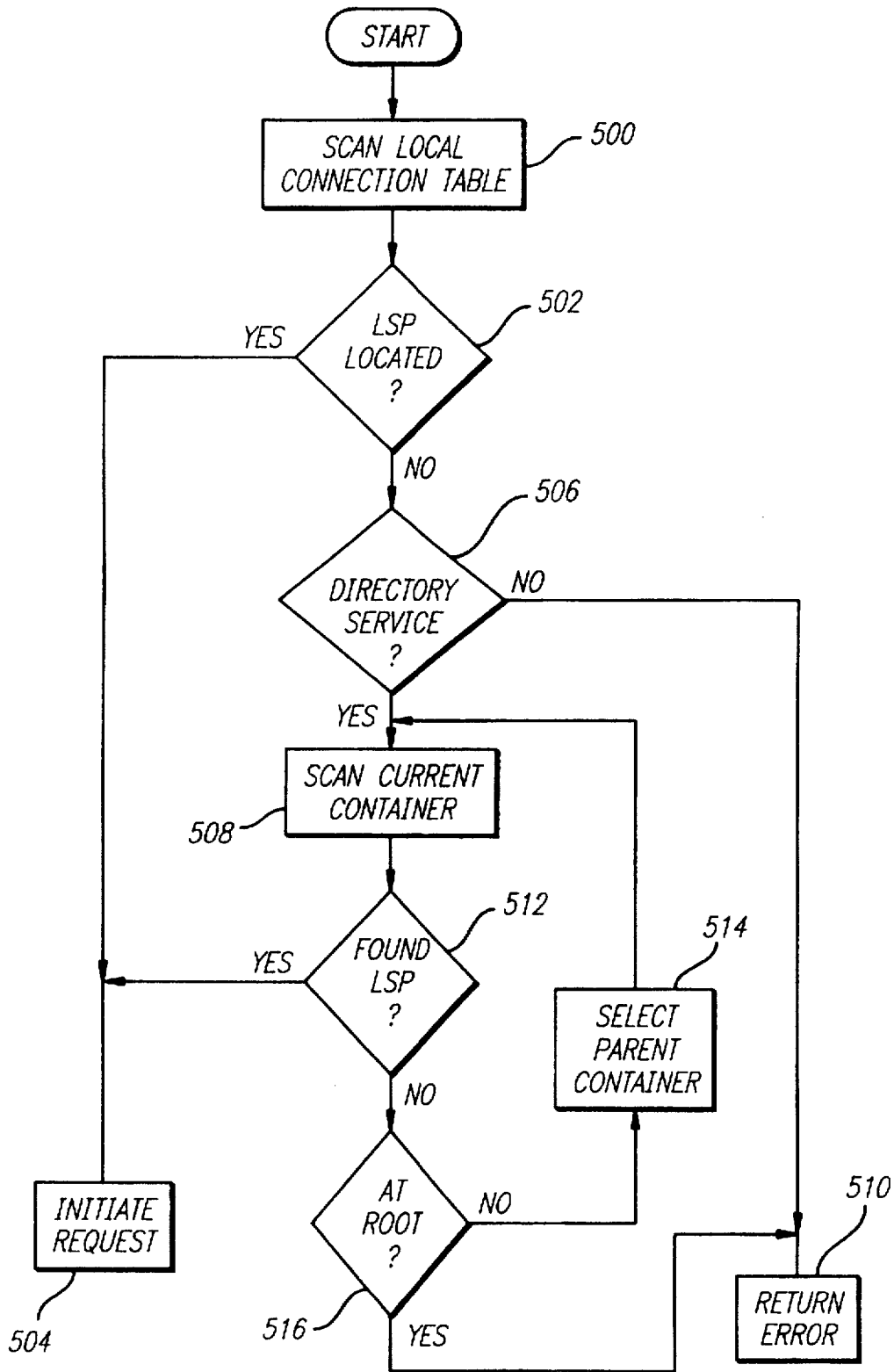
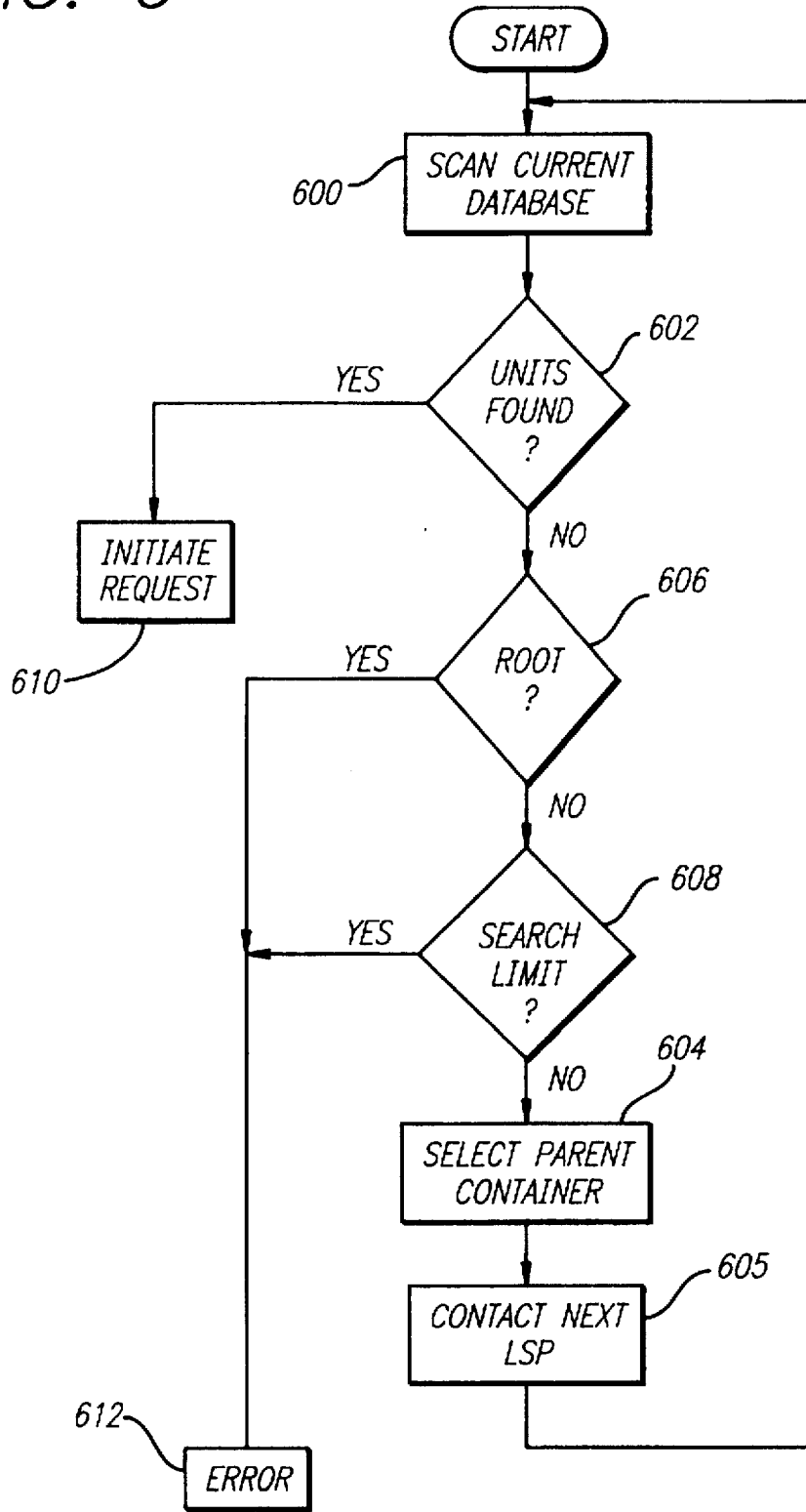


FIG. 6



Explore Litigation Insights

Docket Alarm provides insights to develop a more informed litigation strategy and the peace of mind of knowing you're on top of things.

Real-Time Litigation Alerts



Keep your litigation team up-to-date with **real-time alerts** and advanced team management tools built for the enterprise, all while greatly reducing PACER spend.

Our comprehensive service means we can handle Federal, State, and Administrative courts across the country.

Advanced Docket Research



With over 230 million records, Docket Alarm's cloud-native docket research platform finds what other services can't. Coverage includes Federal, State, plus PTAB, TTAB, ITC and NLRB decisions, all in one place.

Identify arguments that have been successful in the past with full text, pinpoint searching. Link to case law cited within any court document via Fastcase.

Analytics At Your Fingertips



Learn what happened the last time a particular judge, opposing counsel or company faced cases similar to yours.

Advanced out-of-the-box PTAB and TTAB analytics are always at your fingertips.

API

Docket Alarm offers a powerful API (application programming interface) to developers that want to integrate case filings into their apps.

LAW FIRMS

Build custom dashboards for your attorneys and clients with live data direct from the court.

Automate many repetitive legal tasks like conflict checks, document management, and marketing.

FINANCIAL INSTITUTIONS

Litigation and bankruptcy checks for companies and debtors.

E-DISCOVERY AND LEGAL VENDORS

Sync your system to PACER to automate legal marketing.