



US00772227B2

(12) **United States Patent**  
**Zhang et al.**

(10) **Patent No.:** **US 7,722,227 B2**  
(45) **Date of Patent:** **May 25, 2010**

(54) **LIGHTING FIXTURE WITH RECESSED  
BAFFLE TRIM UNIT**

(56) **References Cited**

U.S. PATENT DOCUMENTS

- (75) Inventors: **Kanghong Zhang**, Torrance, CA (US);  
**Daniel Dix**, Irvine, CA (US)
- (73) Assignee: **Cordelia Lighting, Inc.**, Rancho  
Dominguez, CA (US)
- (\* ) Notice: Subject to any disclaimer, the term of this  
patent is extended or adjusted under 35  
U.S.C. 154(b) by 0 days.

5,951,151 A	9/1999	Doubeck et al.
6,217,189 B1	4/2001	Nassim
6,719,438 B2	4/2004	Sevack et al.
7,186,008 B2	3/2007	Patti
7,220,029 B2	5/2007	Bynum et al.
7,255,461 B2	8/2007	Yang
2008/0112170 A1*	5/2008	Trott et al. .... 362/311

\* cited by examiner

*Primary Examiner*—Sandra L O’Shea  
*Assistant Examiner*—Meghan K Dunwiddie  
(74) *Attorney, Agent, or Firm*—Paul Y. Feng; Fulwider Patton  
LLP

- (21) Appl. No.: **12/249,683**
- (22) Filed: **Oct. 10, 2008**

(65) **Prior Publication Data**  
US 2009/0097262 A1 Apr. 16, 2009

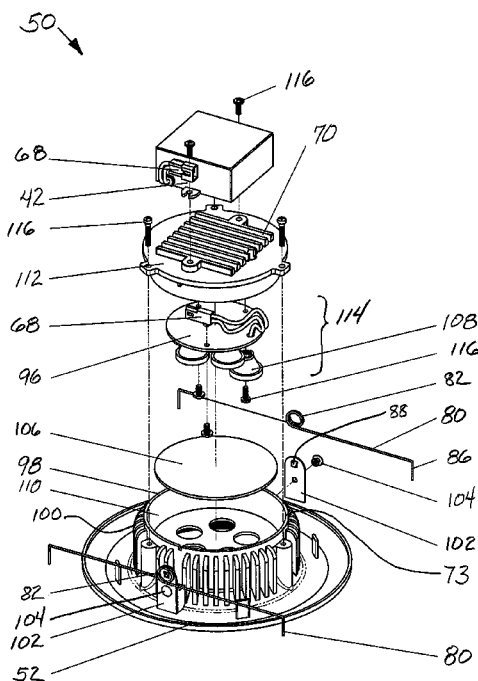
(57) **ABSTRACT**

**Related U.S. Application Data**

- (63) Continuation of application No. 29/295,943, filed on  
Oct. 10, 2007, now Pat. No. Des. 595,452.
- (60) Provisional application No. 60/979,068, filed on Oct.  
10, 2007.
- (51) **Int. Cl.**  
*F21V 17/00* (2006.01)
- (52) **U.S. Cl.** ..... **362/364; 362/147; 362/294;**  
**362/362; 362/365; 362/373**
- (58) **Field of Classification Search** ..... **362/147–148,**  
**362/294, 362, 364–366, 368, 372–373**  
See application file for complete search history.

A recessed lighting fixture providing illumination from a light source comprising a plurality of light emitting diodes (LEDs) placed within a cavity of a planar surface, such as a ceiling, wall, or shower. The fixture comprises a baffle integrated with a low profile heat sink that is used to draw heat out of the fixture and communicate that heat to a trim ring of the fixture for dissipation of the heat in the room so that higher intensity light sources can be used. Improved grounding of the recessed trim unit to the recessed housing is provided with combination support and grounding springs. One embodiment of the light source is fixed in position while a second embodiment is gimbal mounted for aiming the light produced by the fixture.

**26 Claims, 20 Drawing Sheets**



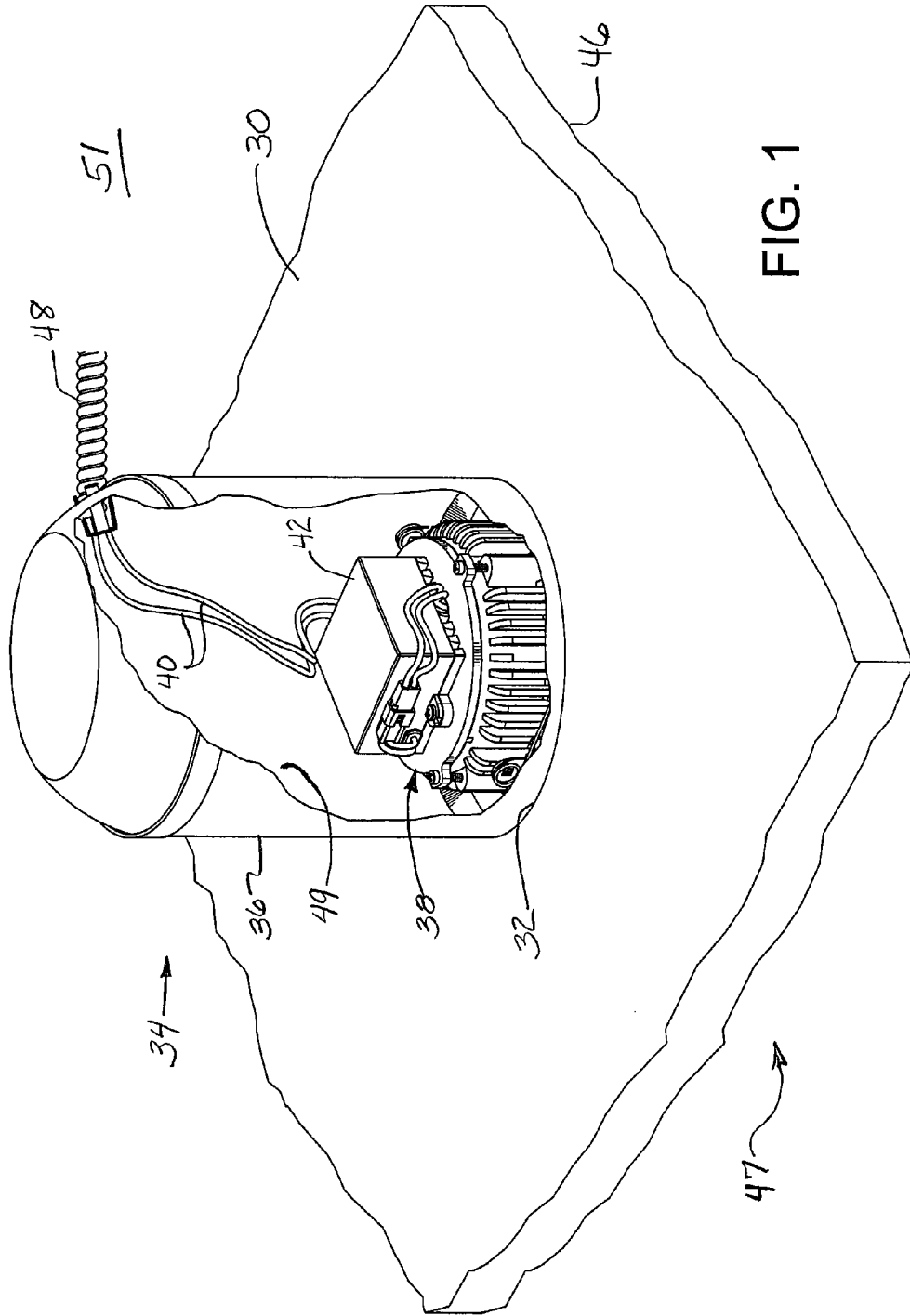
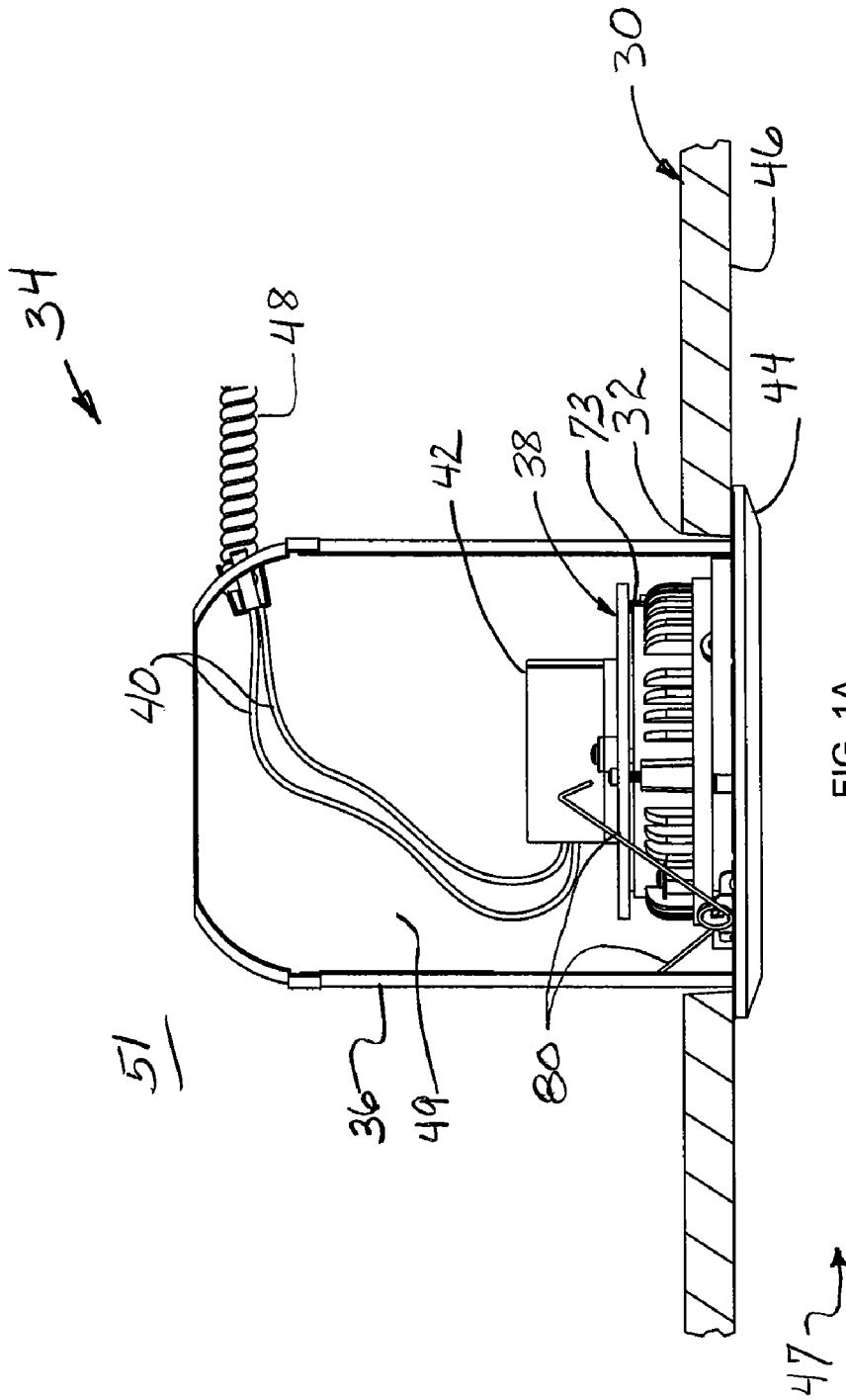


FIG. 1



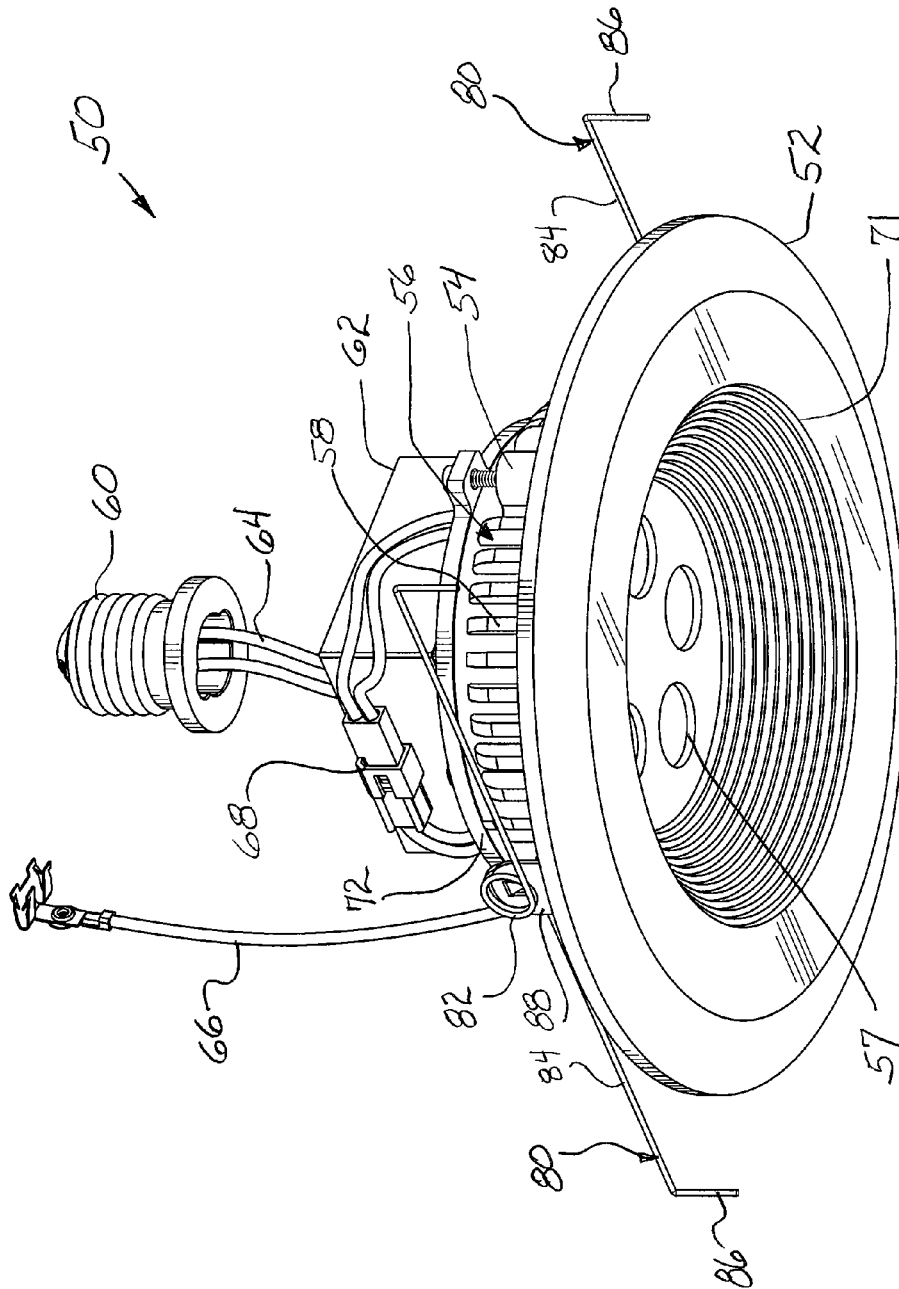


FIG. 2

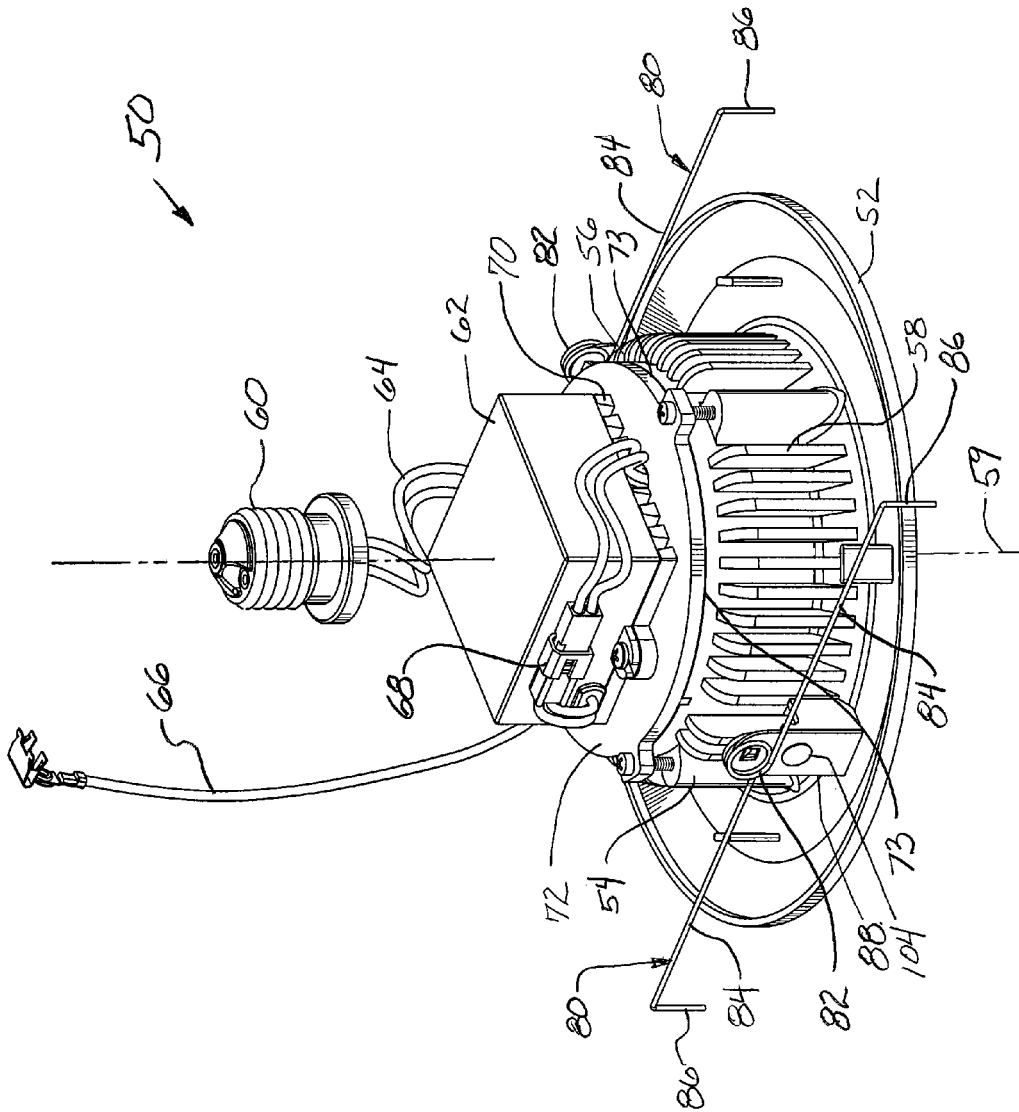


FIG. 3

# Explore Litigation Insights

Docket Alarm provides insights to develop a more informed litigation strategy and the peace of mind of knowing you're on top of things.

## Real-Time Litigation Alerts



Keep your litigation team up-to-date with **real-time alerts** and advanced team management tools built for the enterprise, all while greatly reducing PACER spend.

Our comprehensive service means we can handle Federal, State, and Administrative courts across the country.

## Advanced Docket Research



With over 230 million records, Docket Alarm's cloud-native docket research platform finds what other services can't. Coverage includes Federal, State, plus PTAB, TTAB, ITC and NLRB decisions, all in one place.

Identify arguments that have been successful in the past with full text, pinpoint searching. Link to case law cited within any court document via Fastcase.

## Analytics At Your Fingertips



Learn what happened the last time a particular judge, opposing counsel or company faced cases similar to yours.

Advanced out-of-the-box PTAB and TTAB analytics are always at your fingertips.

## API

Docket Alarm offers a powerful API (application programming interface) to developers that want to integrate case filings into their apps.

## LAW FIRMS

Build custom dashboards for your attorneys and clients with live data direct from the court.

Automate many repetitive legal tasks like conflict checks, document management, and marketing.

## FINANCIAL INSTITUTIONS

Litigation and bankruptcy checks for companies and debtors.

## E-DISCOVERY AND LEGAL VENDORS

Sync your system to PACER to automate legal marketing.