



[54] METHOD AND APPARATUS FOR MACHINE VISION CLASSIFICATION AND TRACKING

[75] Inventors: Mark J. Brady, Cottage Grove; Darin G. Cerny, St. Paul; Michelle C. Granholm, Woodbury; Belayneh W. Million, St. Paul, all of Minn.

[73] Assignee: Minnesota Mining and Manufacturing Company, St. Paul, Minn.

[21] Appl. No.: 429,943

[22] Filed: Apr. 27, 1995

Related U.S. Application Data

[63] Continuation-in-part of Ser. No. 163,820, Dec. 8, 1993, Pat. No. 5,434,927.

[51] Int. Cl.⁶ G06K 9/00; G06K 9/48; H04N 9/47; G08G 1/054

[52] U.S. Cl. 382/103; 382/104; 382/199; 348/148; 395/905; 340/937

[58] Field of Search 382/103, 104, 382/160, 199; 348/148; 395/905, 21; 340/937

[56] References Cited

U.S. PATENT DOCUMENTS

4,490,851	12/1984	Gerhart et al.	382/43
4,709,264	11/1987	Tamura et al.	358/93
4,839,648	6/1989	Beucher et al.	340/933
4,847,772	7/1989	Michalopoulos et al.	364/436
4,881,270	11/1989	Knecht et al.	382/17
4,942,533	7/1990	Kakinami et al.	364/449
5,046,111	9/1991	Cox et al.	382/8
5,103,305	4/1992	Watanabe	358/105
5,111,232	5/1992	Tsunefuji	354/402
5,172,226	12/1992	Morimura et al.	358/105
5,210,799	5/1993	Rao	382/199

(List continued on next page.)

FOREIGN PATENT DOCUMENTS

0 454 166	10/1991	European Pat. Off.	G08G 1/04
WO 93/19441	9/1993	WIPO	G08G 1/017

OTHER PUBLICATIONS

Gilbert et al.; "Dynamic Traffic Information from Remote Video Monitors"; Environmental Research Institute of Michigan; Oct., 1991, pp. 213-231.

Zielke et al.; "Intensity and Edge-Based Symmetry Detection Applied to Car-Following"; Lecture Notes in Computer Science, vol. 588; G. Sandini (ed.); Computer Vision—ECCV'92.

Michalopoulos; "Vehicle Detection Video Through Image Processing: The Autoscope System"; IEEE Transactions on Vehicular Technology; vol. 40, No. 1, Feb. 1991.

Ali et al.; "Alternative Practical Methods for Moving Object Detection"; International Conference on Image Processing and Its Applications (Conf. Publ. No. 354); 1992.

Naito et al.; "A Car Detection System Using Neural Network for Image Processing"; OMRON Corporation, Japan.

AUTOSCOPE—Advanced Wide-Area Vehicle Detection Technology from Econolite Control Products, Inc.

Brochure entitled AUTOSCOPE-2003 Video Vehicle Detection System from Econolite Ceontrol Products, Inc.

Primary Examiner—Andrew W. Johns

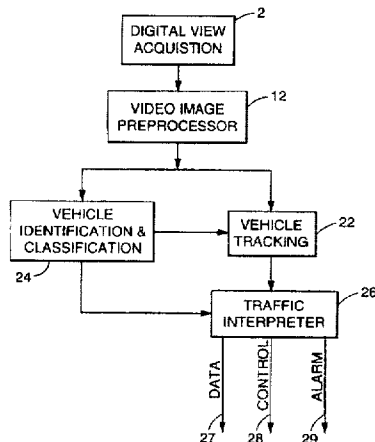
Assistant Examiner—Monica S. Davis

Attorney, Agent, or Firm—Stephen W. Buckingham

[57] ABSTRACT

A method and apparatus for classification and tracking objects in three-dimensional space is described. A machine vision system acquires images from roadway scenes and processes the images by analyzing the intensities of edge elements within the image. The system then applies fuzzy set theory to the location and angles of each pixel after the pixel intensities have been characterized by vectors. A neural network interprets the data created by the fuzzy set operators and classifies objects within the roadway scene. The system can also track objects within the roadway scene, such as vehicles, by forecasting potential track regions and then calculating match scores for each potential track region based on how well the edge elements from the target track regions match those from the source region as weighted by the extent the edge elements have moved.

17 Claims, 14 Drawing Sheets



U.S. PATENT DOCUMENTS

5,263,120	11/1993	Bickel	395/11	5,296,852	3/1994	Rathi	340/933
5,280,566	1/1994	Nakamura	395/51	5,335,297	8/1994	Pullen	382/103
5,283,575	2/1994	Kao et al.	340/990	5,432,712	7/1995	Chan	382/199
				5,434,927	7/1995	Brady et al.	382/104
				5,555,312	9/1996	Shima et al.	382/104

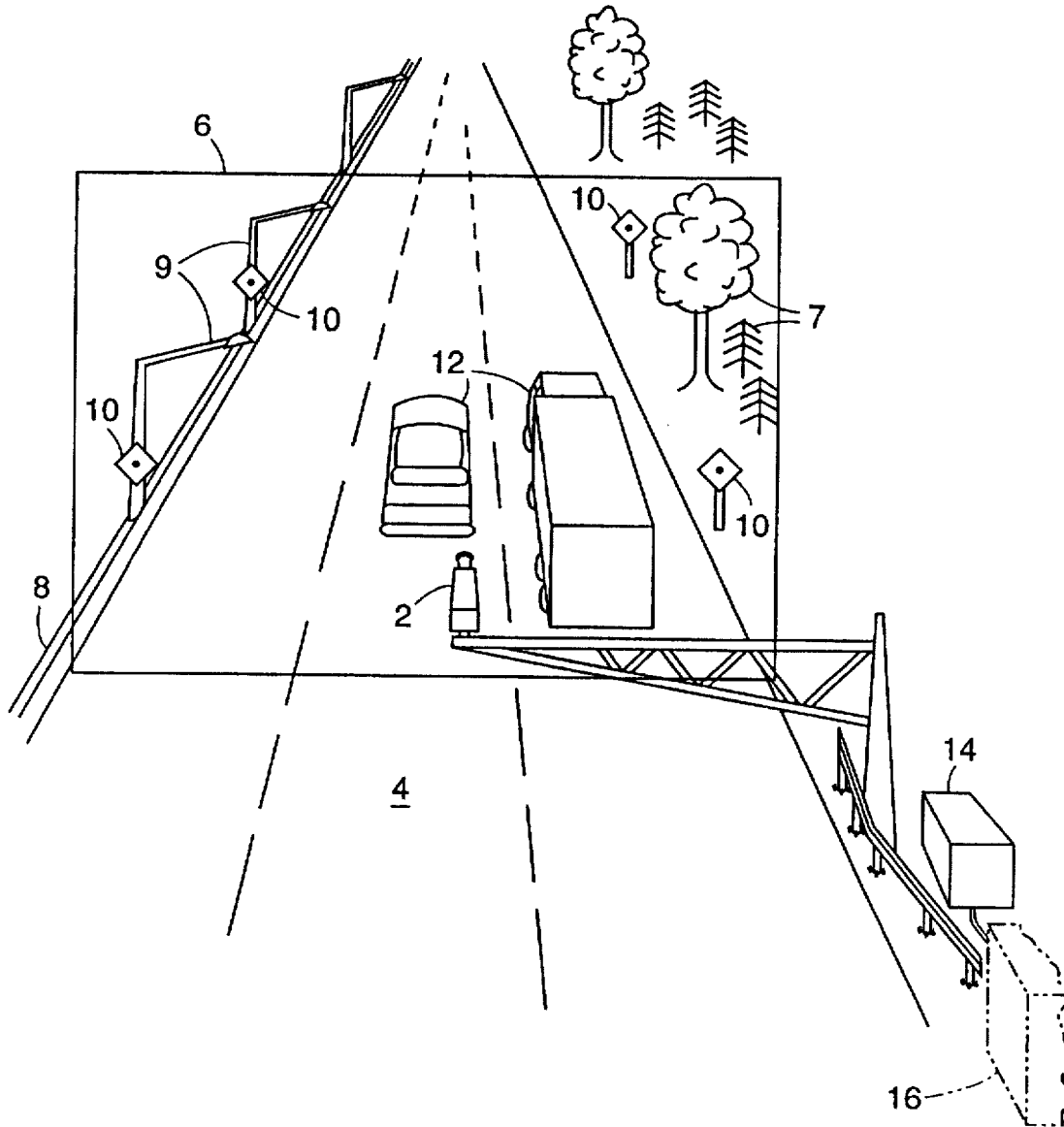


Fig. 1

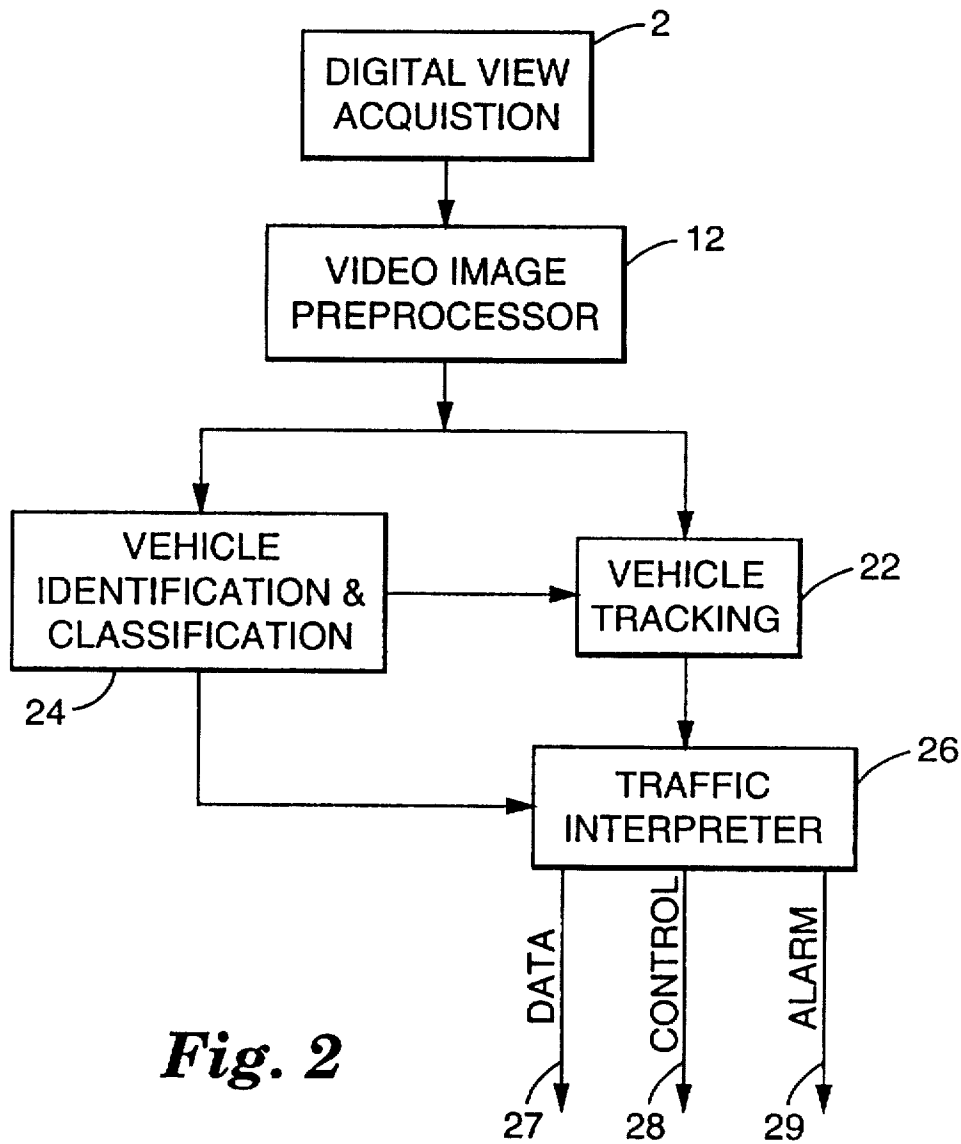


Fig. 2

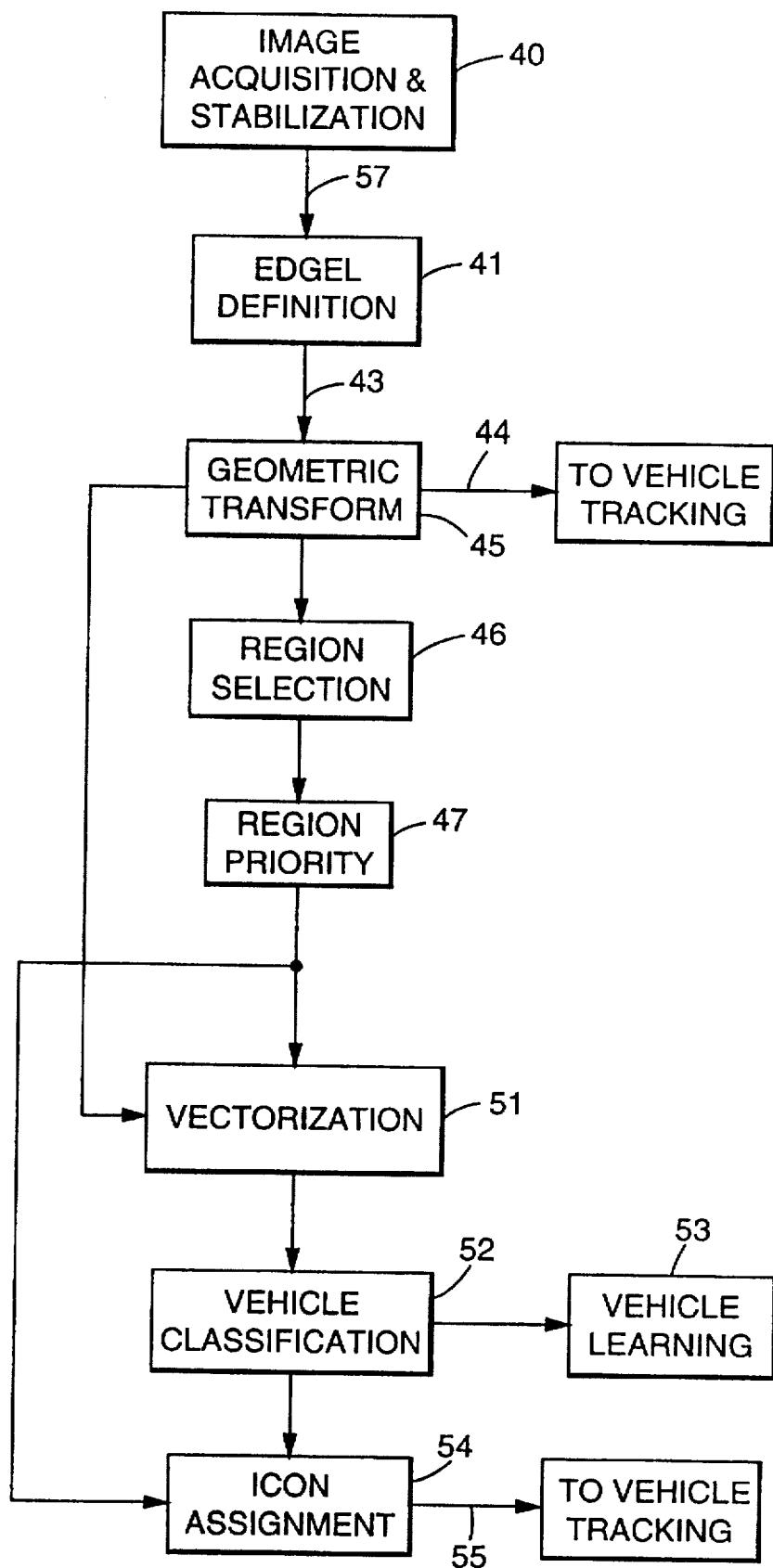


Fig. 3

Explore Litigation Insights

Docket Alarm provides insights to develop a more informed litigation strategy and the peace of mind of knowing you're on top of things.

Real-Time Litigation Alerts



Keep your litigation team up-to-date with **real-time alerts** and advanced team management tools built for the enterprise, all while greatly reducing PACER spend.

Our comprehensive service means we can handle Federal, State, and Administrative courts across the country.

Advanced Docket Research



With over 230 million records, Docket Alarm's cloud-native docket research platform finds what other services can't. Coverage includes Federal, State, plus PTAB, TTAB, ITC and NLRB decisions, all in one place.

Identify arguments that have been successful in the past with full text, pinpoint searching. Link to case law cited within any court document via Fastcase.

Analytics At Your Fingertips



Learn what happened the last time a particular judge, opposing counsel or company faced cases similar to yours.

Advanced out-of-the-box PTAB and TTAB analytics are always at your fingertips.

API

Docket Alarm offers a powerful API (application programming interface) to developers that want to integrate case filings into their apps.

LAW FIRMS

Build custom dashboards for your attorneys and clients with live data direct from the court.

Automate many repetitive legal tasks like conflict checks, document management, and marketing.

FINANCIAL INSTITUTIONS

Litigation and bankruptcy checks for companies and debtors.

E-DISCOVERY AND LEGAL VENDORS

Sync your system to PACER to automate legal marketing.