

United States Patent [19]

[11] **Patent Number:** 5,764,786

Kuwashima et al.

[45] **Date of Patent:** Jun. 9, 1998

[54] **MOVING OBJECT MEASUREMENT DEVICE EMPLOYING A THREE-DIMENSIONAL ANALYSIS TO OBTAIN CHARACTERISTICS OF THE MOVING OBJECT**

5,243,418	9/1993	Kuno et al.	382/107
5,422,700	6/1995	Suda et al.	354/402
5,515,448	5/1996	Nishitani	382/107

[76] **Inventors:** Shigesumi Kuwashima, 2-26-2-406 Chidori, Ohta-Ku, Tokyo 152; Masao Shimizu, 3-29-503 Kosugi-cho, Nakabara-ku, Kawasaki, Kanagawa 211; Toru Nakamura, 838-39 Ishibayashi, Nishinasuno-cho, Nasu-gun; Dairoku Sekiguchi, 2-23-3 Kakinokizaka, Meguro-ku, Tokyo 152, all of Japan

FOREIGN PATENT DOCUMENTS

50-148024	11/1975	Japan	H04N 5/24
57-201914	12/1982	Japan	G05D 3/00
61-45910	3/1986	Japan	G01B 11/00
63-261102	10/1988	Japan	G01B 11/00
1-263703	10/1989	Japan	G05D 3/12
2-140073	5/1990	Japan	H04N 5/232
4-1473	1/1992	Japan	G06F 15/70
4-95806	3/1992	Japan	G01B 11/00
4-117077	4/1992	Japan	H04N 5/232
4-184577	7/1992	Japan	G06F 15/70
4-329790	11/1992	Japan	G06F 15/70

[21] **Appl. No.:** 381,864
 [22] **PCT Filed:** Jun. 10, 1994
 [86] **PCT No.:** PCT/JP94/00934
 § 371 **Date:** Jun. 27, 1995
 § 102(e) **Date:** Jun. 27, 1995
 [87] **PCT Pub. No.:** WO94/29670
 PCT Pub. **Date:** Dec. 22, 1994

Primary Examiner—Andrew W. Johns
Assistant Examiner—Monica S. Davis
Attorney, Agent, or Firm—Cushman Darby & Cushman IP Group of Pillsbury Madison & Sutro LLP

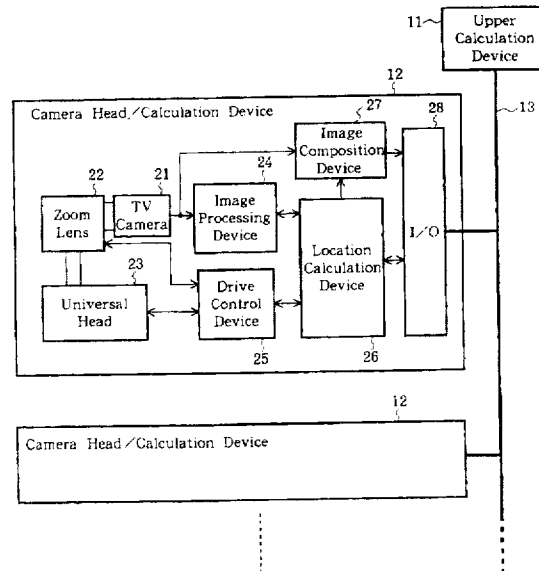
[30] **Foreign Application Priority Data**
 Jun. 10, 1993 [JP] Japan 5-138805
 Jun. 10, 1993 [JP] Japan 5-139629
 Oct. 19, 1993 [JP] Japan 5-261223
 [51] **Int. Cl.⁶** G06K 9/00; G06K 9/36; G06K 9/32; G03B 13/18
 [52] **U.S. Cl.** 382/107; 382/285; 382/291; 354/402
 [58] **Field of Search** 382/107, 285, 382/291, 302; 354/402

[57] **ABSTRACT**

The present invention defines the area where the targeted moving object can move in the three-dimensional real spatial coordinate system, then maps it to the two-dimensional area corresponding to the capturing method and the capturing range of the capturing device, and by limiting the image processing for obtaining the coordinate to that area, obtains the coordinate of the moving object in the three-dimensional real space rapidly by using the signal which is capturing the moving object. Furthermore, the present invention is able to control the capturing direction and the capturing range which correspond to the movement of the capturing target, to overlap the image signal with the data which is always changing by the capturing condition and the movement of the measurement data, to improve the detection precision, and to track automatically and smoothly.

[56] **References Cited**
U.S. PATENT DOCUMENTS
 5,055,926 10/1991 Christensen et al. 382/107

38 Claims, 34 Drawing Sheets



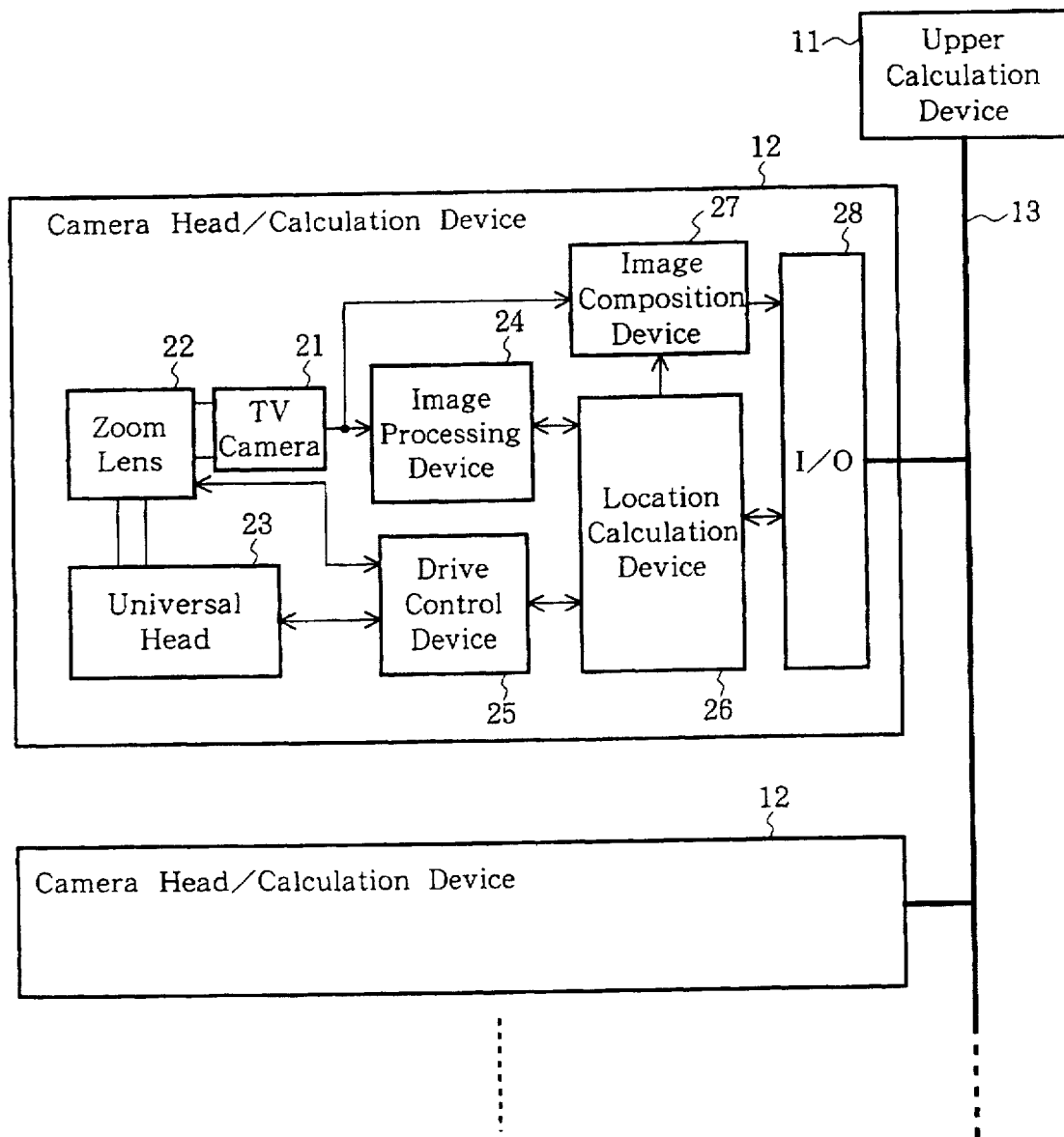


Fig. 1

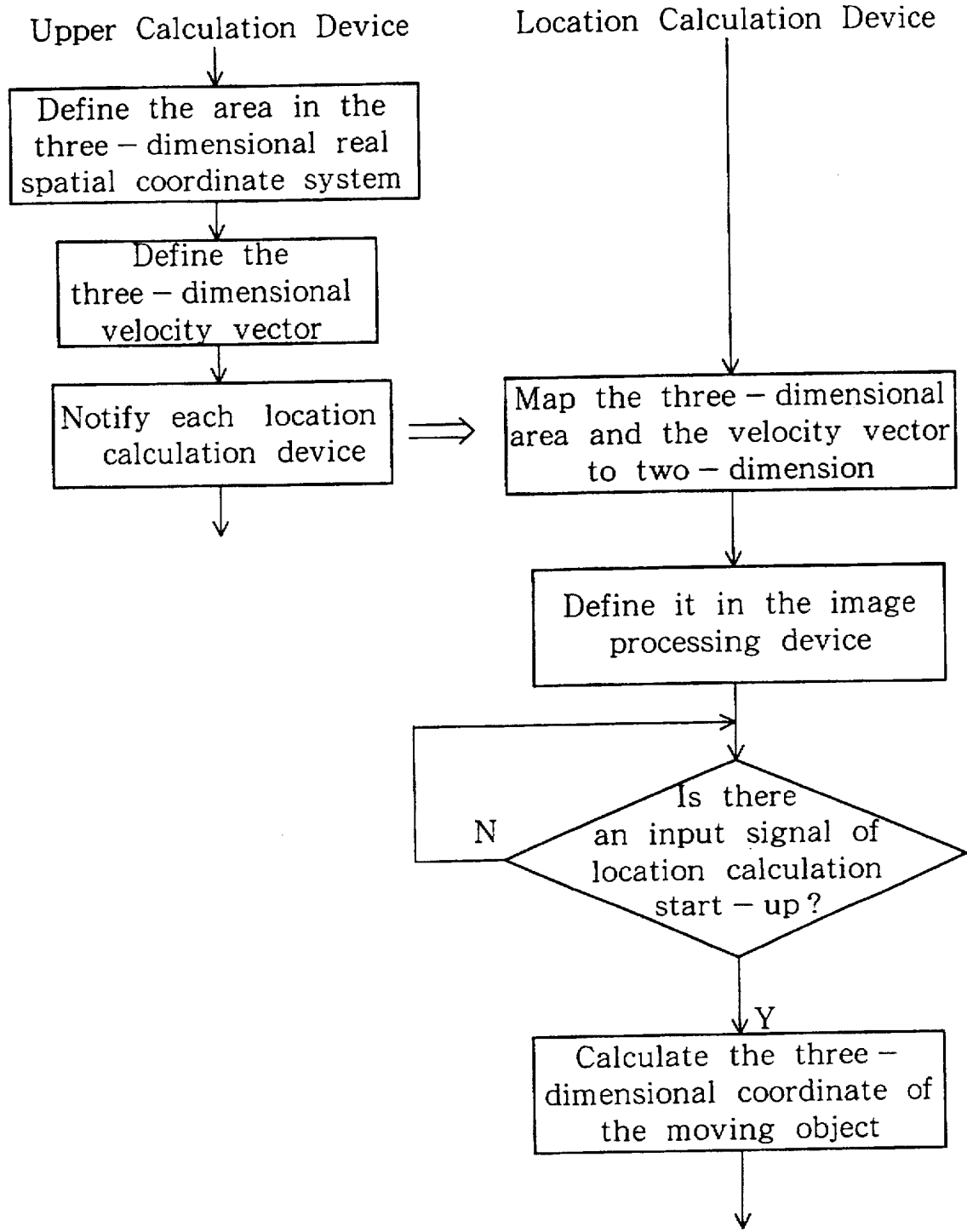


Fig. 2

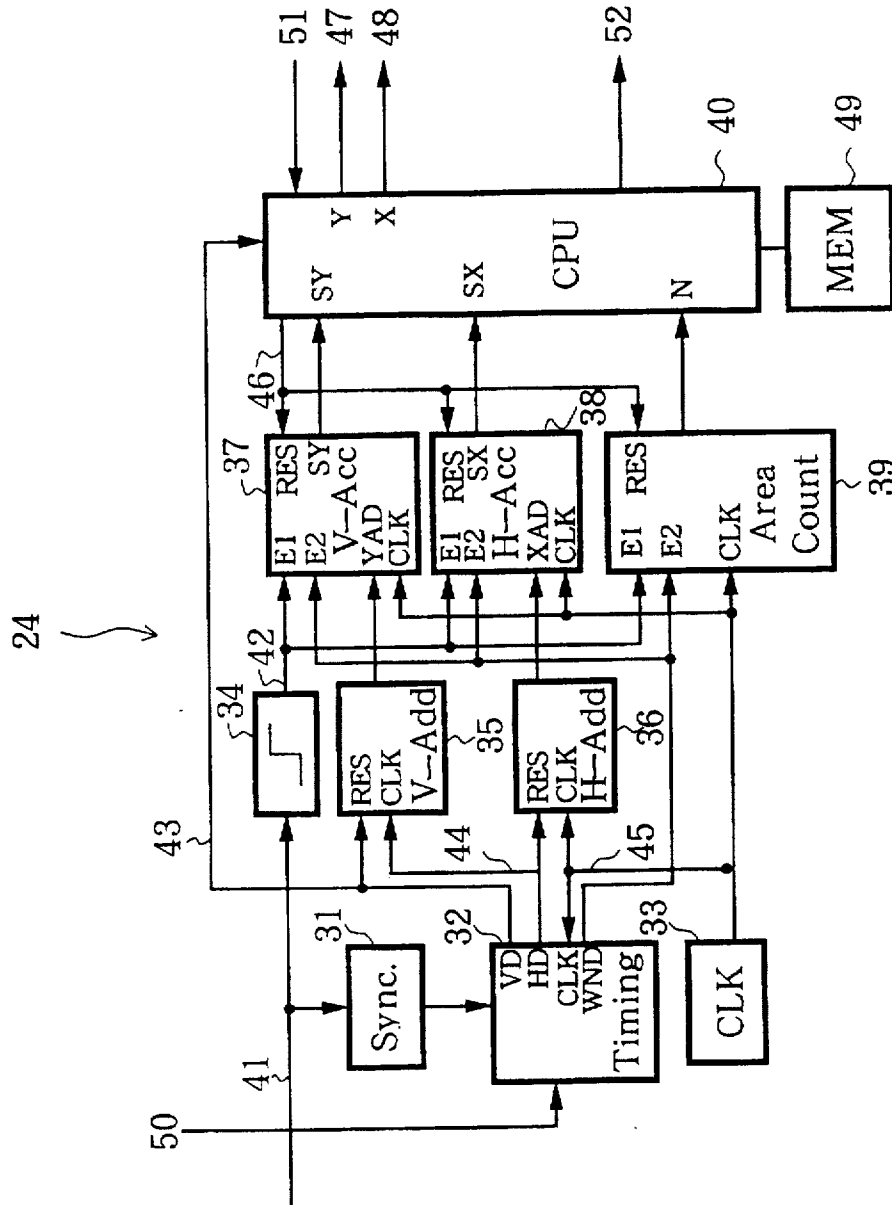


Fig. 3

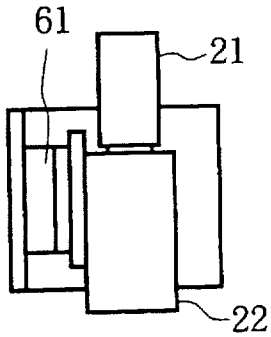


Fig. 4a

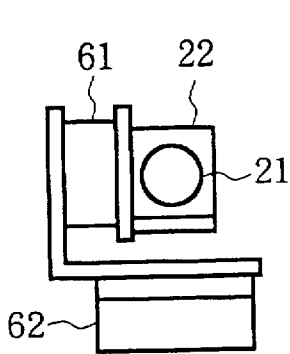


Fig. 4b

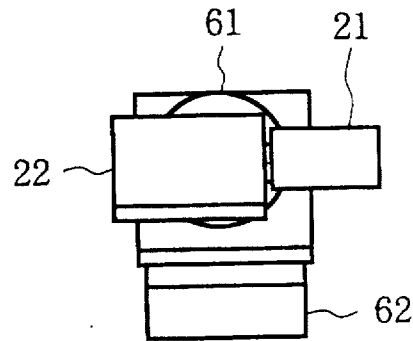


Fig. 4c

Explore Litigation Insights

Docket Alarm provides insights to develop a more informed litigation strategy and the peace of mind of knowing you're on top of things.

Real-Time Litigation Alerts



Keep your litigation team up-to-date with **real-time alerts** and advanced team management tools built for the enterprise, all while greatly reducing PACER spend.

Our comprehensive service means we can handle Federal, State, and Administrative courts across the country.

Advanced Docket Research



With over 230 million records, Docket Alarm's cloud-native docket research platform finds what other services can't. Coverage includes Federal, State, plus PTAB, TTAB, ITC and NLRB decisions, all in one place.

Identify arguments that have been successful in the past with full text, pinpoint searching. Link to case law cited within any court document via Fastcase.

Analytics At Your Fingertips



Learn what happened the last time a particular judge, opposing counsel or company faced cases similar to yours.

Advanced out-of-the-box PTAB and TTAB analytics are always at your fingertips.

API

Docket Alarm offers a powerful API (application programming interface) to developers that want to integrate case filings into their apps.

LAW FIRMS

Build custom dashboards for your attorneys and clients with live data direct from the court.

Automate many repetitive legal tasks like conflict checks, document management, and marketing.

FINANCIAL INSTITUTIONS

Litigation and bankruptcy checks for companies and debtors.

E-DISCOVERY AND LEGAL VENDORS

Sync your system to PACER to automate legal marketing.