

[54] SYSTEM FOR RECOGNIZING IMAGE

[75] Inventor: Mitsuhiro Ando, Tokyo, Japan

[73] Assignee: Aisin Seiki K.K., Tokyo, Japan

[21] Appl. No.: 242,441

[22] Filed: Sep. 9, 1988

[30] Foreign Application Priority Data

Sep. 9, 1987 [JP] Japan ..... 62-225862

[51] Int. Cl.<sup>5</sup> ..... G06K 9/00

[52] U.S. Cl. .... 382/2; 382/23; 382/24; 434/43; 180/271; 180/167

[58] Field of Search ..... 382/2, 1, 23, 24; 340/825.03; 358/103; 434/62, 43, 44; 244/222, 76 R, 194, 195, 3.11, 3.14; 414/901; 180/167, 272, 271

[56] References Cited

U.S. PATENT DOCUMENTS

3,638,188	1/1972	Pincoffs et al. ....	382/23
4,281,734	8/1981	Johnston .....	180/167
4,479,784	10/1984	Mallinson et al. ....	434/43
4,625,329	11/1986	Ishikawa et al. ....	180/271

OTHER PUBLICATIONS

Nakasi Honda et al., Multivariate Data Representation

and Analysis by Face Pattern Using Facial Expression Characteristics, 6-1985, 85-93.

Primary Examiner—Michael Razavi  
Attorney, Agent, or Firm—Sughrue, Mion, Zinn, Macpeak & Seas

[57] ABSTRACT

There is disclosed a system which permits an automobile driver to control electrical devices installed on an automobile by moving his or her pupils and mouth intentionally. The system includes a TV camera, a light, a first microprocessor which controls the electrical devices according to the changes in the shape of the driver's mouth, a second microprocessor for performing various arithmetic operations, and memories. Reference values have been previously assigned to various elements of the driver's face and stored in one of the memories. The second microprocessor normalizes the distances between the elements of the face with the distance between the pupils of the eyes and compares the normalized distances with the reference values to calculate the degrees of similarity of the elements.

1 Claim, 22 Drawing Sheets

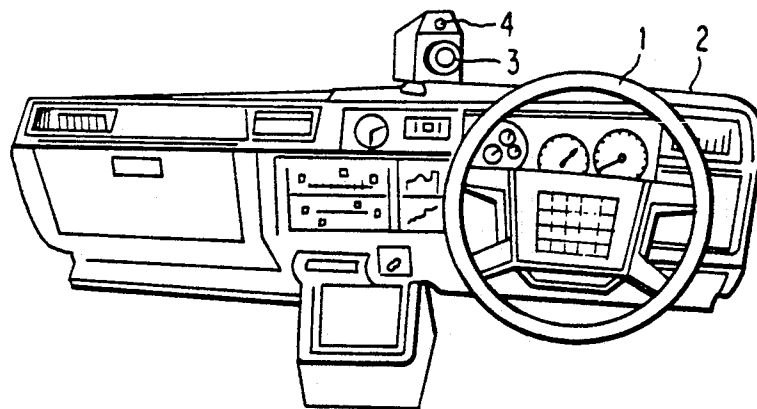


FIG. 1a

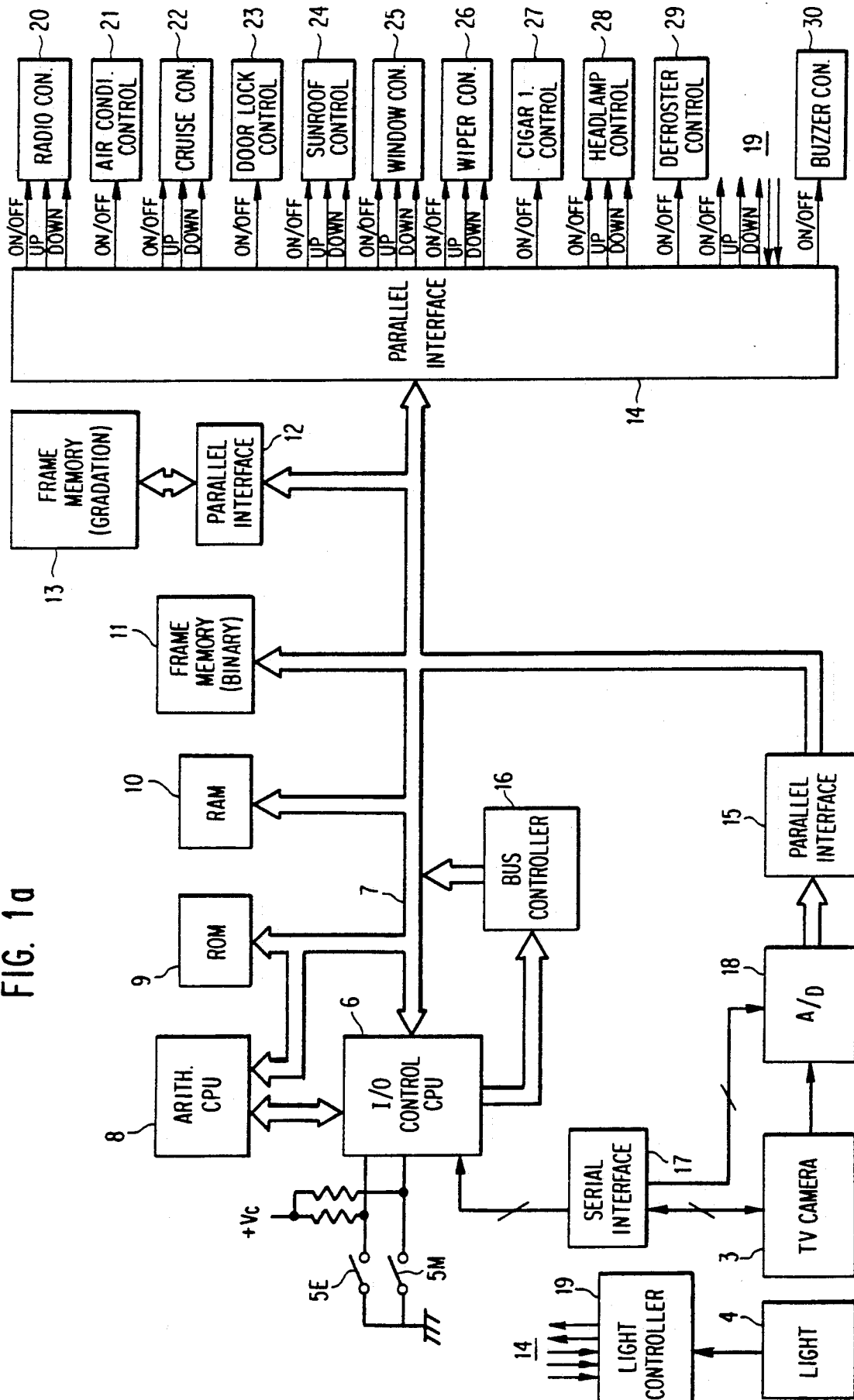


FIG. 1b

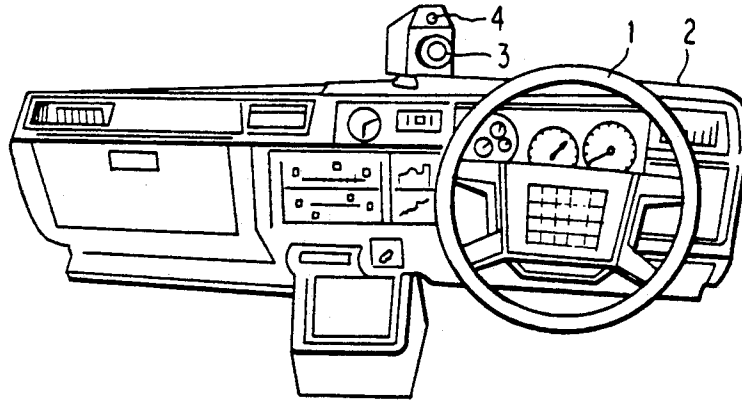


FIG. 3

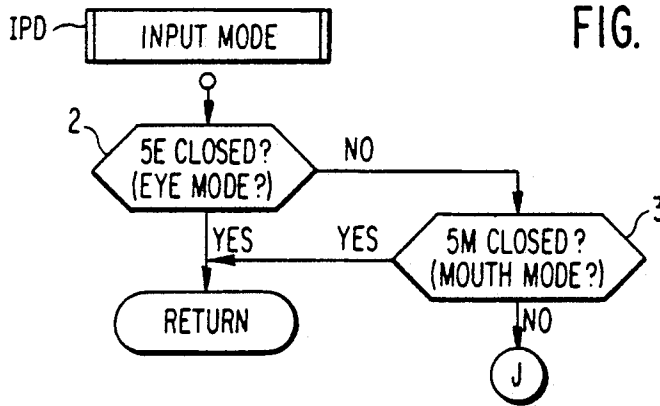


FIG. 4

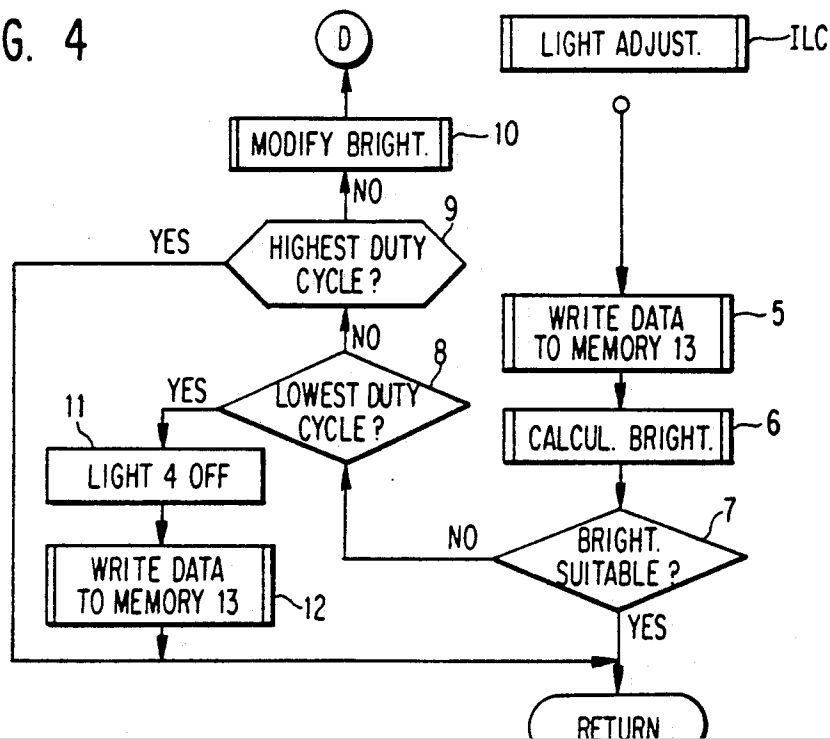


FIG. 2

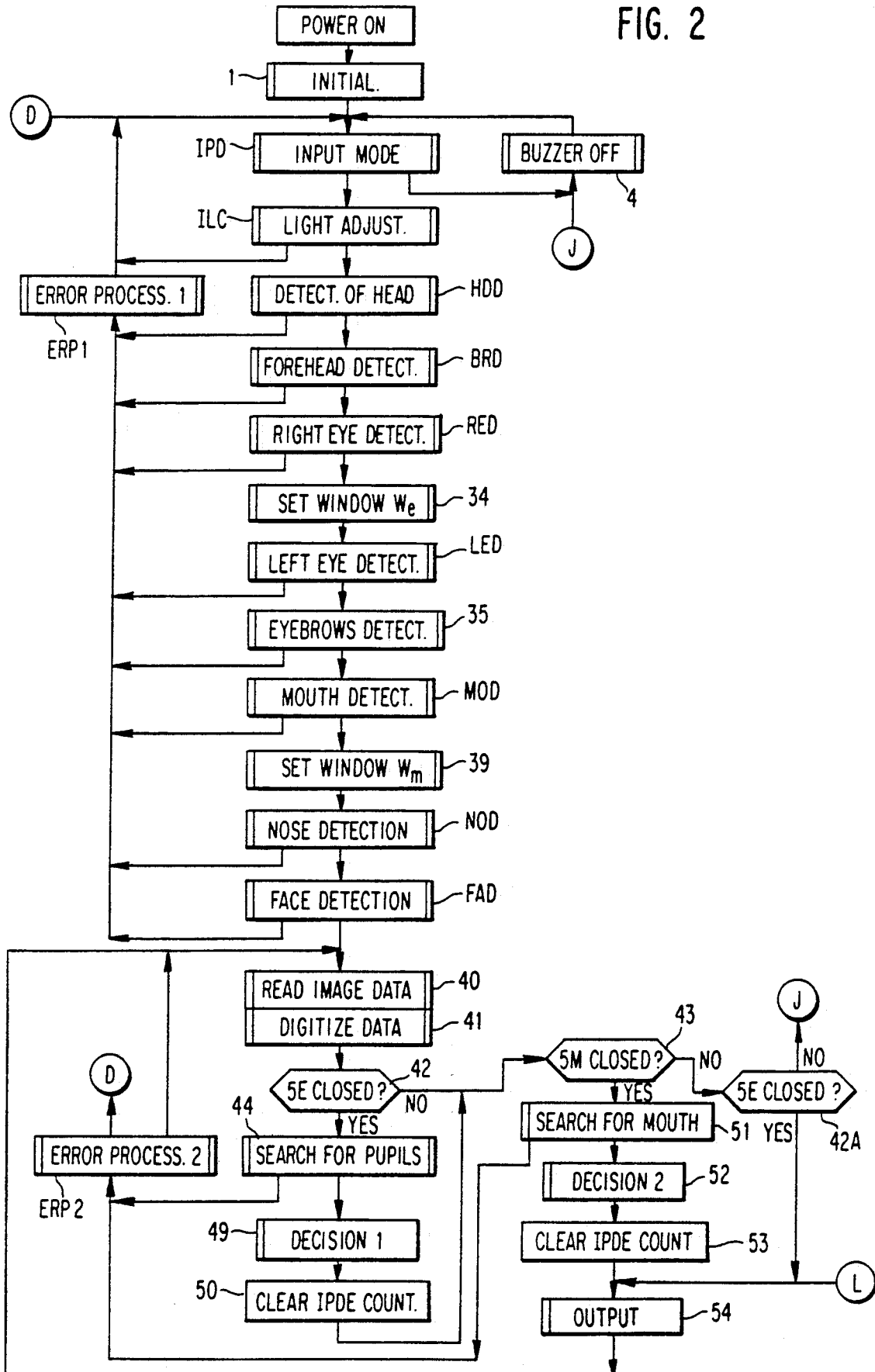


FIG. 5a

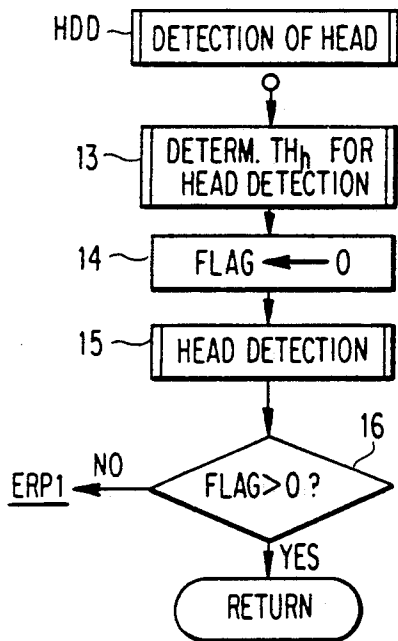
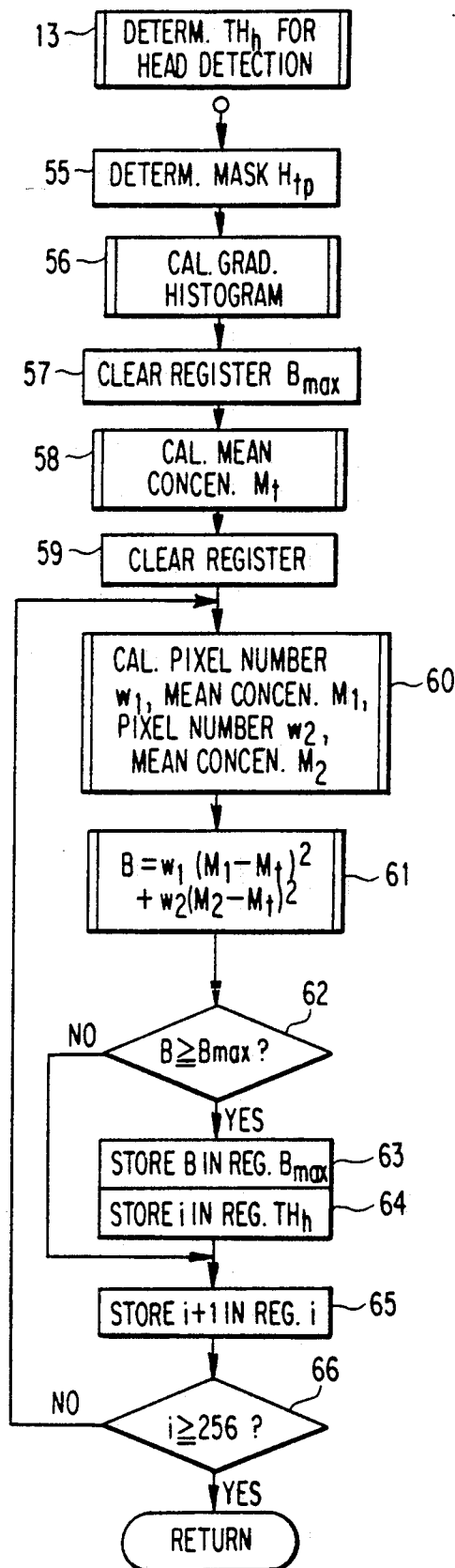


FIG. 5b



# Explore Litigation Insights

Docket Alarm provides insights to develop a more informed litigation strategy and the peace of mind of knowing you're on top of things.

## Real-Time Litigation Alerts



Keep your litigation team up-to-date with **real-time alerts** and advanced team management tools built for the enterprise, all while greatly reducing PACER spend.

Our comprehensive service means we can handle Federal, State, and Administrative courts across the country.

## Advanced Docket Research



With over 230 million records, Docket Alarm's cloud-native docket research platform finds what other services can't. Coverage includes Federal, State, plus PTAB, TTAB, ITC and NLRB decisions, all in one place.

Identify arguments that have been successful in the past with full text, pinpoint searching. Link to case law cited within any court document via Fastcase.

## Analytics At Your Fingertips



Learn what happened the last time a particular judge, opposing counsel or company faced cases similar to yours.

Advanced out-of-the-box PTAB and TTAB analytics are always at your fingertips.

## API

Docket Alarm offers a powerful API (application programming interface) to developers that want to integrate case filings into their apps.

## LAW FIRMS

Build custom dashboards for your attorneys and clients with live data direct from the court.

Automate many repetitive legal tasks like conflict checks, document management, and marketing.

## FINANCIAL INSTITUTIONS

Litigation and bankruptcy checks for companies and debtors.

## E-DISCOVERY AND LEGAL VENDORS

Sync your system to PACER to automate legal marketing.