

(12) **United States Patent**
Bark et al.

(10) **Patent No.:** **US 6,445,917 B1**
(45) **Date of Patent:** **Sep. 3, 2002**

- (54) **MOBILE STATION MEASUREMENTS WITH EVENT-BASED REPORTING**
- (75) Inventors: **Gunnar Bark**, Linköping; **Joakim Bergström**, Stockholm; **Walter Müller**, Upplands Väsby, all of (SE)
- (73) Assignee: **Telefonaktiebolaget LM Ericsson (publ)**, Stockholm (SE)
- (*) Notice: Subject to any disclaimer, the term of this patent is extended or adjusted under 35 U.S.C. 154(b) by 0 days.

6,047,183 A *	4/2000	Kingdon et al.	342/450
6,061,337 A *	5/2000	Light et al.	370/331
6,088,588 A *	7/2000	Osborne	455/425
6,151,508 A *	11/2000	Kim et al.	455/522
6,178,326 B1 *	1/2001	Kalliokulju	455/337
6,289,009 B1 *	9/2001	Sato	370/342
6,330,459 B1 *	12/2001	Crichton et al.	455/434

FOREIGN PATENT DOCUMENTS

WO	WO 98/43455	10/1998
WO	WO 99/43177	8/1999
WO	WO 99/43178	8/1999

* cited by examiner

Primary Examiner—William Trost
Assistant Examiner—Congvan Tran
(74) *Attorney, Agent, or Firm*—Nixon & Vanderhye PC

- (21) Appl. No.: **09/314,019**
- (22) Filed: **May 19, 1999**
- (51) **Int. Cl.**⁷ **H04Q 7/34**
- (52) **U.S. Cl.** **455/423; 455/436; 455/437; 455/439; 455/522; 370/331; 370/332**
- (58) **Field of Search** **455/403, 423, 455/424, 425, 436, 437, 439, 453, 442, 522, 524, 525, 513, 512; 370/331, 332**

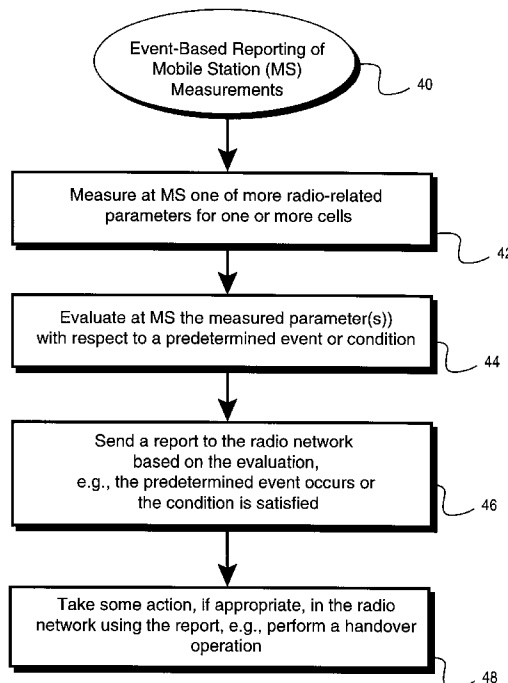
(57) **ABSTRACT**

The present invention provides event-based or driven reporting of mobile station measurements. A mobile station measures one or more radio-related parameters for one or more cells in a radio access network. The mobile station evaluates the measured radio-related parameter with respect to a predetermined condition or event and determines that the predetermined condition is satisfied or that the event has occurred. Based on that evaluation, the mobile radio sends a report to the radio access network. Accordingly, the occurrence of an event and/or the satisfaction of a condition triggers the sending of the report to the network. That way, the network receives the information so that it can take timely and appropriate action without sending outdated or redundant measurement reports that do not convey relevant or new information.

(56) **References Cited**
U.S. PATENT DOCUMENTS

5,241,685 A *	8/1993	Bodin et al.	455/453
5,509,051 A *	4/1996	Barnett et al.	455/443
5,640,414 A	6/1997	Blakeney, II et al.	
5,640,677 A *	6/1997	Karlsson	455/434
5,710,981 A *	1/1998	Kim et al.	455/69
5,754,945 A *	5/1998	Lin et al.	455/436
5,930,710 A *	7/1999	Sawyer et al.	455/436
5,930,721 A *	7/1999	Fried et al.	455/466
5,995,836 A *	11/1999	Wijk et al.	455/436

74 Claims, 9 Drawing Sheets



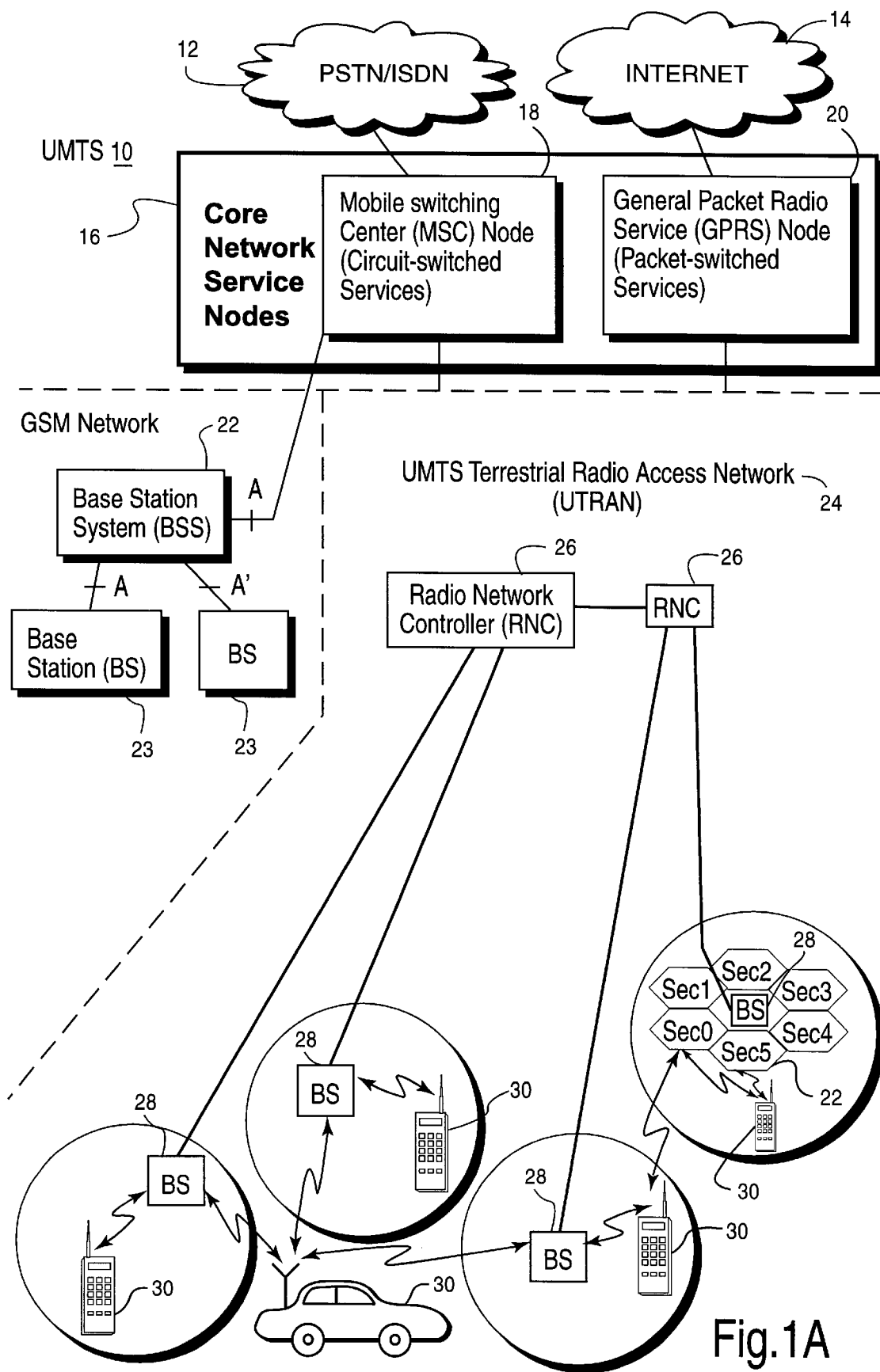


Fig.1A

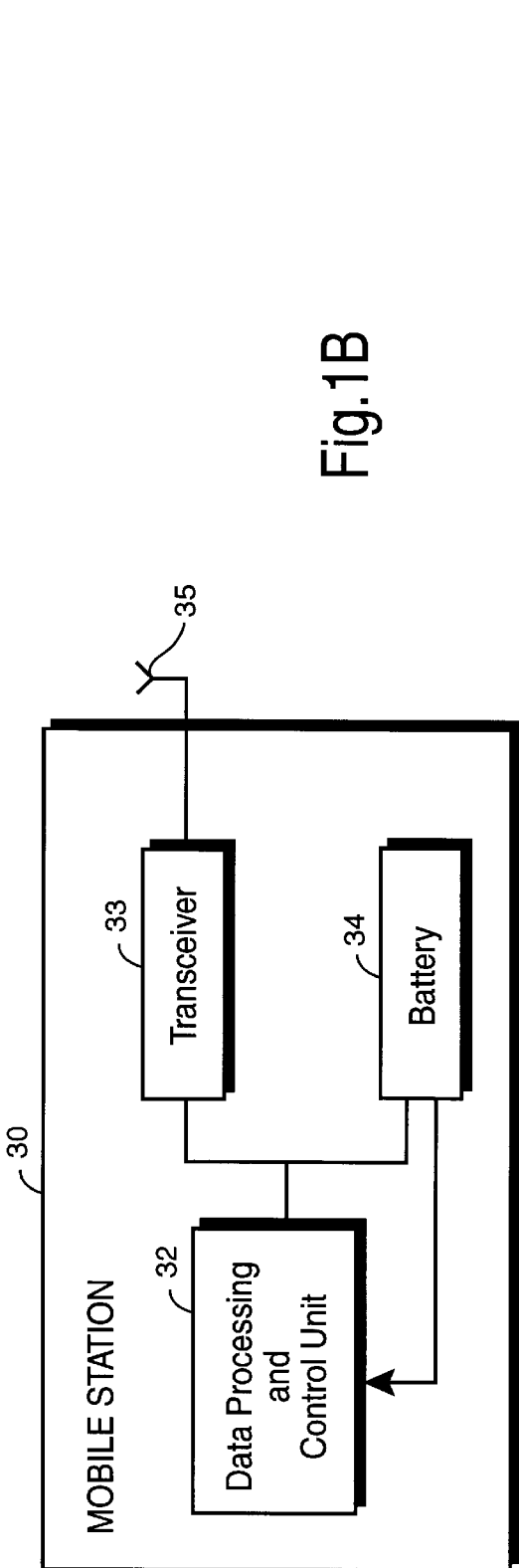


Fig.1B

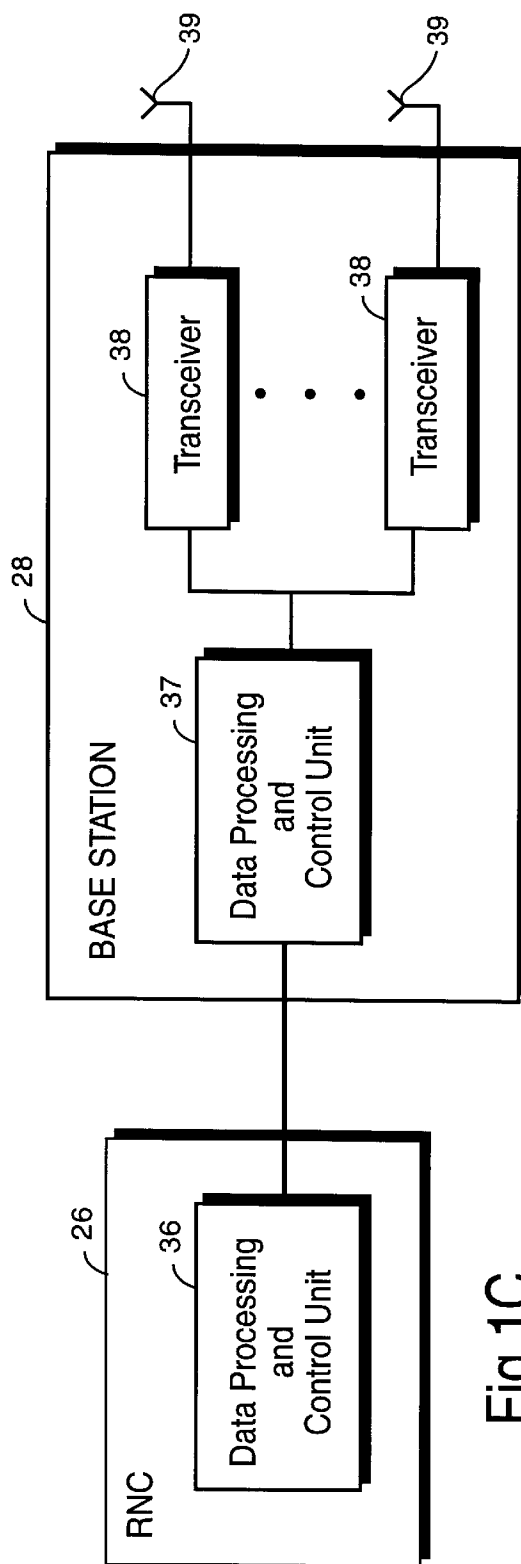


Fig.1C

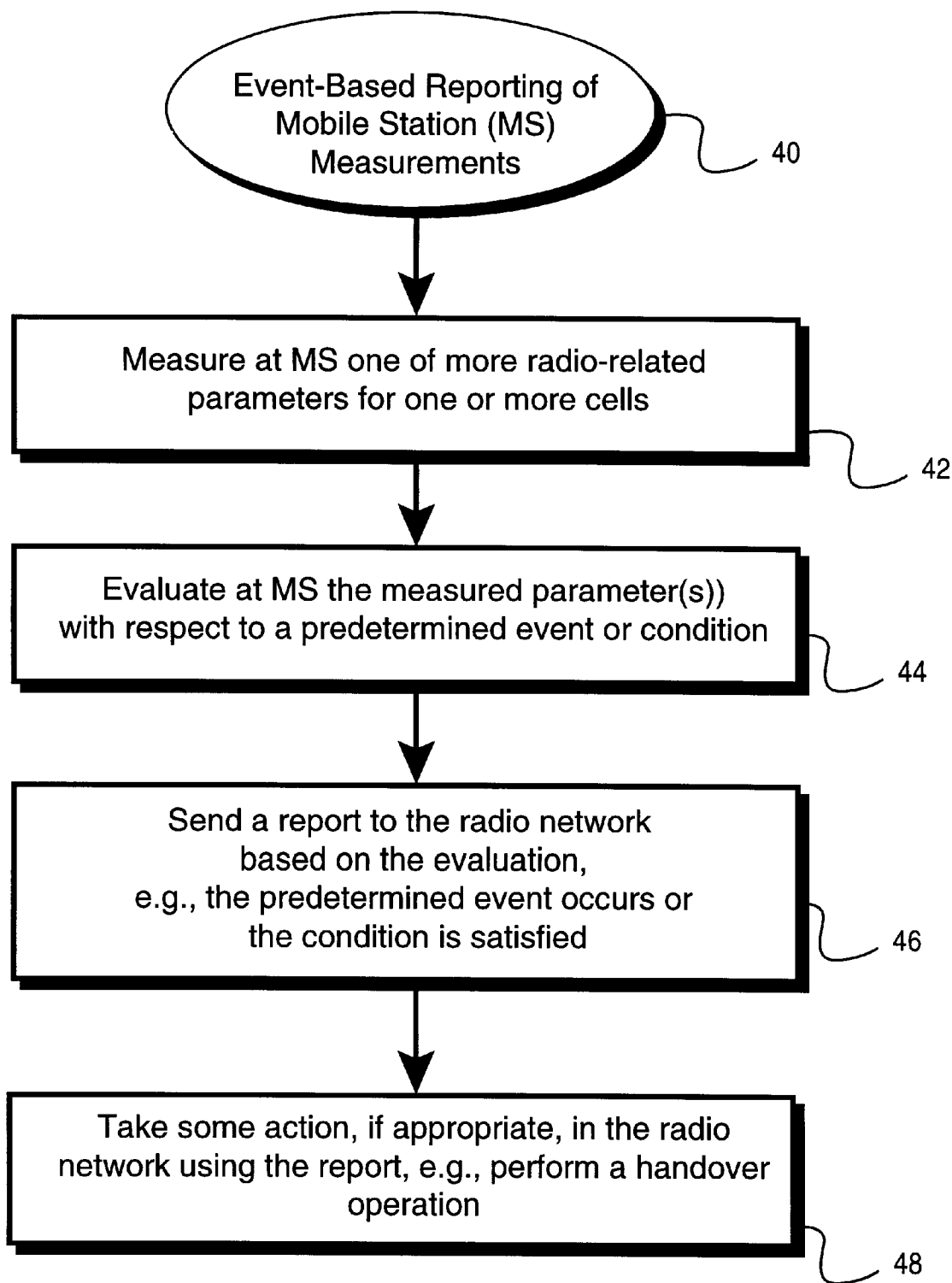
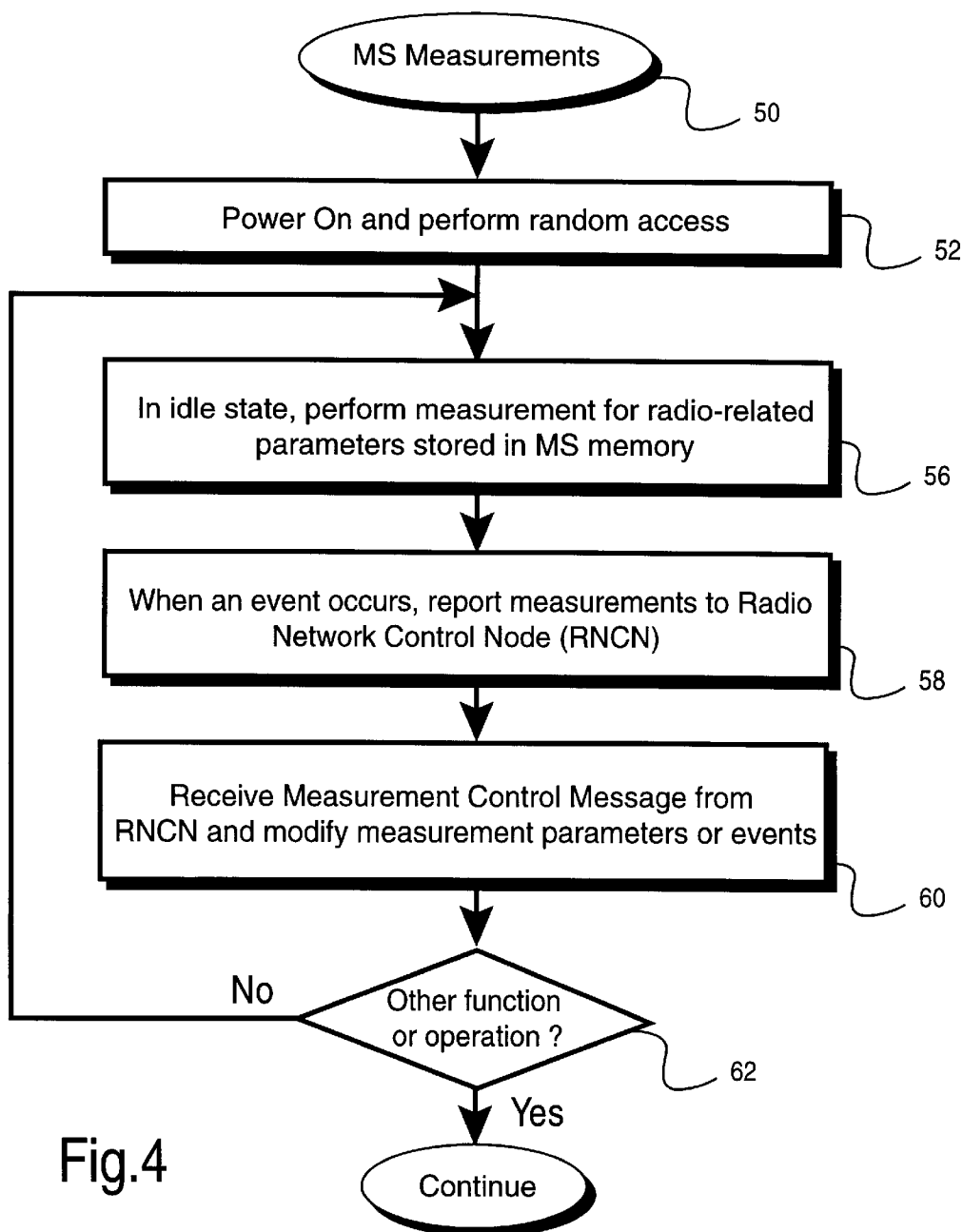
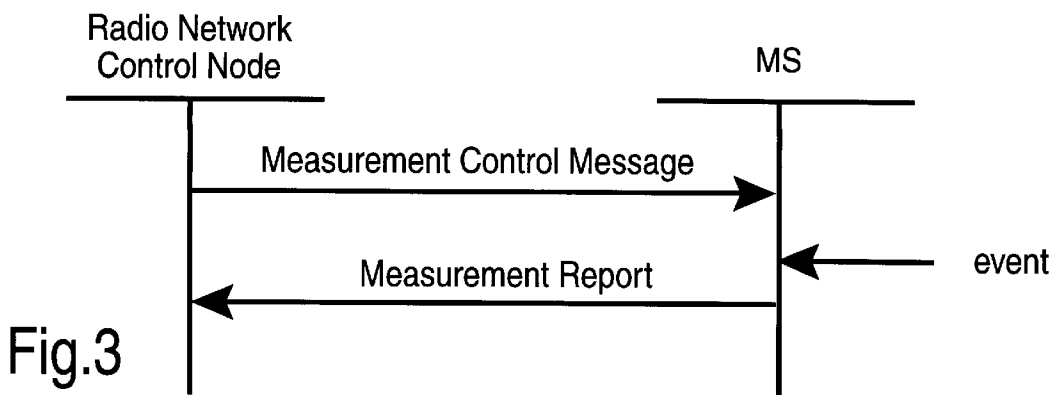


Fig.2



Explore Litigation Insights

Docket Alarm provides insights to develop a more informed litigation strategy and the peace of mind of knowing you're on top of things.

Real-Time Litigation Alerts



Keep your litigation team up-to-date with **real-time alerts** and advanced team management tools built for the enterprise, all while greatly reducing PACER spend.

Our comprehensive service means we can handle Federal, State, and Administrative courts across the country.

Advanced Docket Research



With over 230 million records, Docket Alarm's cloud-native docket research platform finds what other services can't. Coverage includes Federal, State, plus PTAB, TTAB, ITC and NLRB decisions, all in one place.

Identify arguments that have been successful in the past with full text, pinpoint searching. Link to case law cited within any court document via Fastcase.

Analytics At Your Fingertips



Learn what happened the last time a particular judge, opposing counsel or company faced cases similar to yours.

Advanced out-of-the-box PTAB and TTAB analytics are always at your fingertips.

API

Docket Alarm offers a powerful API (application programming interface) to developers that want to integrate case filings into their apps.

LAW FIRMS

Build custom dashboards for your attorneys and clients with live data direct from the court.

Automate many repetitive legal tasks like conflict checks, document management, and marketing.

FINANCIAL INSTITUTIONS

Litigation and bankruptcy checks for companies and debtors.

E-DISCOVERY AND LEGAL VENDORS

Sync your system to PACER to automate legal marketing.