

W T S
ARTICLE DELIVERY

WTS Number: 66419



Order #101439

Request Date: 08/12/2014 03:45pm
Requester: Gary Cennerazzo - Par Pharmaceuticals
Reference:
Delivery email: gary.cennerazzo@parpharm.com
Instructions:
Notes:
Citation: Morris, Transplantation Reviews, 1992, 6(1):39-87

4-hour rush

Estimated Delivery:
08/13/2014 11:45am

Maxcost:

Library/Supplier: MED Q 7T6876

ISSN/ISBN/OCLC: 0955-470X

Priority: 4-hour rush

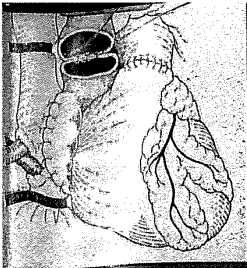
Number of pages: _____

Copyright: I assume responsibility for copyright compliance.

Supplier: WTS staff may obtain materials from outside UW - Madison: \$ _____

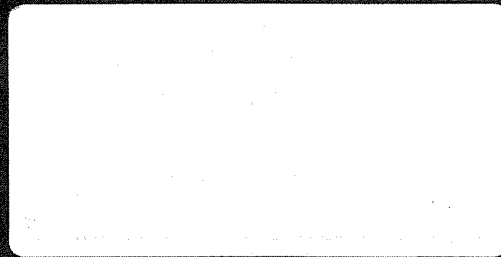
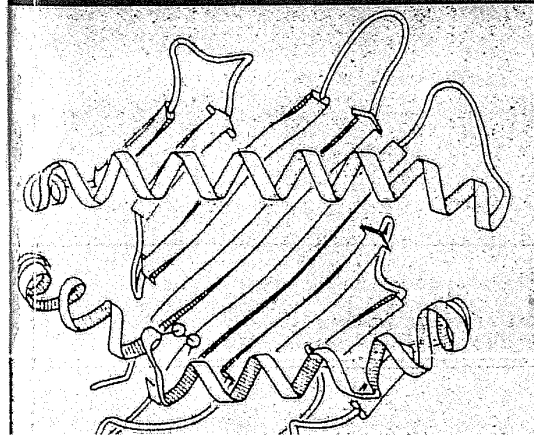
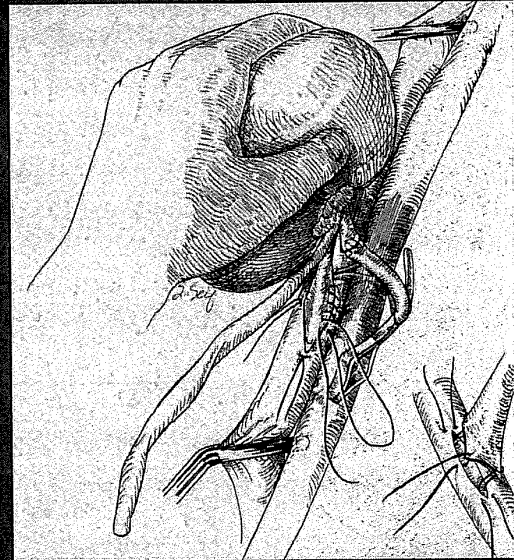
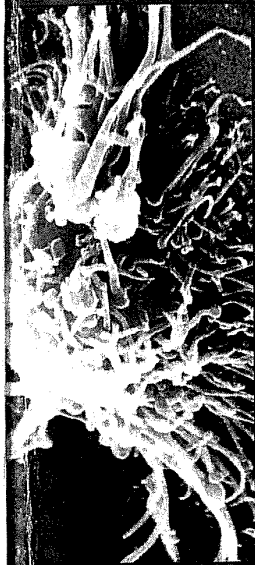
Shipping: \$ _____ **Other:** \$ _____

An outreach service of the Wendt Commons Library, University of Wisconsin - Madison
<http://wts.wisc.edu> | wts@engr.wisc.edu | 608.262.5917



VOLUME 6
NUMBER 1
JANUARY
1992

TRANSPLANTATION REVIEWS



Rapamycins: Antifungal, Antitumor, Antiproliferative, and Immunosuppressive Macrolides

Randall Ellis Morris

What we know is a drop. What we don't know is an ocean.

Isaac Newton

Progress in rapamycin (RPM) research has been rapid and is poised to accelerate even more dramatically. An Investigational New Drug application (IND) for phase I trials of RPM as a treatment for prospective graft recipients was approved less than 2 years after the first published reports^{1,2} and public disclosure³ of the ability of RPM to prolong graft survival in experimental animals. RPM is a macrolide fermentation product that has antifungal and antitumor activity. However, its effects on the immune system have generated the most interest because RPM is structurally similar to another new immunosuppressive macrolide, FK506. RPM is particularly intriguing because it inhibits the activation of immune cells by unique, relatively selective, and extremely potent and highly effective mechanisms. For example, one half microgram of RPM administered daily to mouse recipients of completely mismatched heart allografts prolongs graft survival. When these mice are treated for only 2 weeks with higher doses of RPM, or when a single dose of RPM is administered to rat heart allograft recipients, strain-specific unresponsiveness is induced, and grafts survive indefinitely in both species.

The research on RPM is representative of a significant shift in emphasis in transplantation from the macrocosmic world in which innovative surgical techniques predominated from the 1950s through the 1970s to our current focus on the microcosm of cellular and molecular immunopharmacology. A revolution in the discovery, development, and clinical use of new strategies to control the immune response is clearly upon us: it took more than 35 years to

accrue the four imperfect mainstays of immunosuppression for transplantation—steroids, azathioprine, anti-T-cell antibodies, and Cyclosporin A (CsA). In 1992, six new xenobiotic immunosuppressants will be in clinical trials (Fig 1).

This new era in immunosuppression can be traced to the convergence of several lines of research: (1) the discovery and successful clinical use of CsA; (2) an increased understanding of the fundamental biology of immune cells that enables the actions of different immunosuppressants to be better understood and thus lay the foundation for more rational means to discover, develop, and use improved drugs; and (3) organized preclinical research programs designed to identify potentially valuable immunosuppressants and to generate the knowledge needed for these agents to be used intelligently in the clinic. Figure 2 shows the research program used for several years in the Laboratory for Transplantation Immunology at Stanford University that enabled us to identify RPM³⁻¹¹ and the morpholinomethyl ester of mycophenolic acid (MPA)¹²⁻¹⁶ as immunosuppressants for graft rejection. The mechanisms of action and immunopharmacology of these two compounds, as well as FK506,¹⁷⁻¹⁹ deoxyspergualin (DSG),^{20,21} and brequinar sodium (BQR)²² have also been studied and compared with one another in our laboratory.

Our spectrum of experimental systems begins with in vivo mouse models that are so rapid, quantitative, and inexpensive that we have been able to evaluate hundreds of molecules for suppression of alloimmunity. The vast majority of these drug candidates fail during testing in rodents because they lack efficacy or safety, and they are discarded quickly so that our resources can be concentrated on compounds with the greatest potential. Compounds that show promise are evaluated further in rodent models to identify those with the following ideal characteristics: (1) unique mode of action; (2) high efficacy for the prevention or treatment of acute, accelerated, or chronic rejection; and (3) low toxicity. This Darwinian selection process accomplishes two tasks: first, it insures that only the agents with the greatest poten-

From the Laboratory for Transplantation Immunology, Department of Cardiothoracic Surgery, Stanford University School of Medicine, Stanford, CA.

Address reprint requests to Randall Ellis Morris, MD, Laboratory for Transplantation Immunology, Department of Cardiothoracic Surgery, Stanford University School of Medicine, Stanford, CA 94305-5247.

*Copyright © 1992 by W.B. Saunders Company
0955-470X/92/0601-0004\$5.00/0*

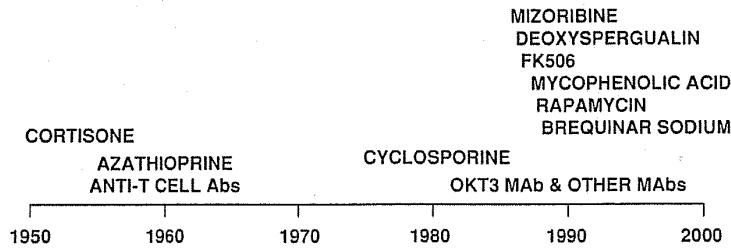


Figure 1. History of the use of drugs used to control graft rejection. All of the following xenobiotics recently discovered to suppress graft rejection in preclinical models have advanced to clinical trials: the antimetabolites such as mizoribine (MZR), MPA in its prodrug form of RS-61443, and BQR; the cyclosporine-like drug FK506, and drugs that define two new classes of immunosuppressants, DSG and RPM.

tial are advanced to the expensive nonhuman primate transplant model; and second, it prepares us to be able to use these compounds intelligently in nonhuman primates. The nonhuman primate model is important because it is highly predictive of the safety and efficacy of a test drug in humans. The sum of all knowledge produced from well-planned preclinical

studies is the essential foundation from which successful clinical trials are designed and executed. New drug development is a highly complex, multidisciplinary task, and our contribution to the development and clinical use of new immunosuppressants depends on very close collaboration with scientists and clinicians in the pharmaceutical industry.

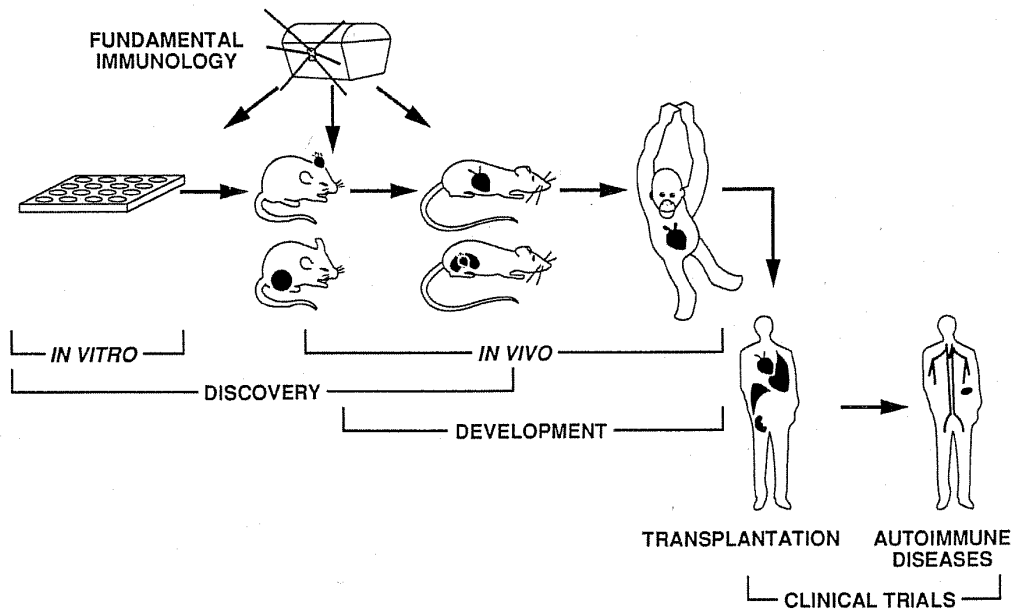


Figure 2. Schematic representation of the program used at the Laboratory of Transplantation Immunology at Stanford University to identify compounds with immunosuppressive activities for transplantation and to develop these compounds for clinical use for the prevention and treatment of rejection. Fundamental knowledge of the immune system coupled with an appreciation of the characteristics of the drug candidate is used to design experiments to profile the activity of the compound and define its mechanisms of action. Heterotopic transplantation of neonatal mouse heart allografts into the ear pinnae of mouse recipients and alloantigenic and mitogenic stimuli of popliteal lymph node hyperplasia are used as rapid and quantitative bioassays before proceeding to the more laborious techniques of primarily vascularized heterotopic (abdominal) and secondarily vascularized heterotopic (subrenal capsule) heart allograft and xenograft transplantation in the rat. Assessment of the efficacy and the safety of the compound in cynomolgus monkey recipients of heterotopic allografts precedes phase I clinical trials in transplant patients and patients with autoimmune diseases.

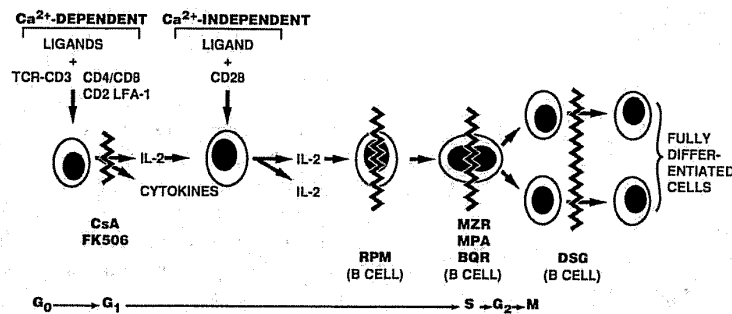


Figure 3. Schematic representation of the possible sites of action of the following immunosuppressants on activated T cells: CsA and FK506 prevent the transcription of early phase cytokine genes; RPM inhibits the signal transduction of IL-2 bound to its receptor and may have other antiproliferative effects unrelated to lymphokine signals; MZR, MPA, and BQR all inhibit purine (MZR, MPA) or pyrimidine (BQR) nucleotide synthesis; DSG seems to inhibit late stages of T-cell maturation. RPM, MZR, MPA, BQR, and DSG also act on activated B cells at the sites shown.

Even more important than the relatively large number of new immunosuppressants that have been discovered is their variety. Each of these new molecules suppresses the immune system by blocking distinctly different biochemical reactions that initiate the activation of immune cells that cause the many forms of graft rejection (Fig 3). Briefly, CsA and FK506 act soon after Ca^{2+} -dependent T-cell activation to prevent the synthesis of cytokines important for the perpetuation and amplification of the immune response.²³⁻²⁵ RPM acts later to block multiple effects of cytokines on immune cells including the inhibition of interleukin-2-(IL-2)-triggered T-cell proliferation,²⁶⁻³¹ but its antiproliferative effects are not restricted solely to T and B cells. RPM also selectively inhibits the proliferation of growth factor-dependent and growth factor-independent nonimmune cells. Mizoribine (MZR),³² MPA,³³ and BQR³⁴ are antimetabolites that inhibit DNA synthesis primarily in lymphocytes. These new antimetabolites are more selective than azathioprine because these compounds block the activity of enzymes restricted only to the de novo purine or pyrimidine biosynthetic pathways. Lymphocytes are more dependent on these pathways for nucleotide synthesis than other cells.

Recent reviews³⁵⁻³⁸ discuss these and other immunosuppressants. RPM has recently been the subject of four brief reviews,^{7,39-41} a long review,⁴² and has been included in reviews that have primarily focused on FK506.⁴³⁻⁴⁵ This review provides a complete profile of RPM from work published through the end of August 1991. Despite the progress made in understanding RPM since the first publication on this compound in 1975,⁴⁶ the description of its ability to suppress graft rejection has stimulated renewed

interest by a wide variety of investigators whose work has not yet been published. As a result, research on macrolide immunosuppressants has become fluid and extremely fast-paced. Because unpublished data generally are not available for evaluation, I have not referred to unpublished work or personal communications. However, I have relied on many studies of RPM from the Laboratory of Transplantation Immunology at Stanford University that have yet to be published in full. In most of these cases, I have supplied the data from which conclusions in the text are drawn.

Because this review is being written relatively early in the research life of RPM, and because the majority of the work on this complex molecule has yet to be published, the material subsequently presented should be regarded more as a preview rather than as a review. At the very least, this article will provide a logical framework that other investigators can use to organize and to evaluate new information on RPM as it is published. For many investigators with highly specialized interests, only selected sections will be of use. For others, it is essential to understand all that is known about a new and unique molecule such as RPM. Without an understanding of RPM that is both deep and broad, it will be difficult to meet the challenging tasks of using RPM as a tool to learn more about the immune system, maximizing its therapeutic potential, and discovering new and improved members of this class of immunosuppressant. If we strive to understand thoroughly the little that is now known about RPM, we will make more efficient and rapid progress toward our goal of understanding all of the important biological effects of this molecule.

Explore Litigation Insights

Docket Alarm provides insights to develop a more informed litigation strategy and the peace of mind of knowing you're on top of things.

Real-Time Litigation Alerts



Keep your litigation team up-to-date with **real-time alerts** and advanced team management tools built for the enterprise, all while greatly reducing PACER spend.

Our comprehensive service means we can handle Federal, State, and Administrative courts across the country.

Advanced Docket Research



With over 230 million records, Docket Alarm's cloud-native docket research platform finds what other services can't. Coverage includes Federal, State, plus PTAB, TTAB, ITC and NLRB decisions, all in one place.

Identify arguments that have been successful in the past with full text, pinpoint searching. Link to case law cited within any court document via Fastcase.

Analytics At Your Fingertips



Learn what happened the last time a particular judge, opposing counsel or company faced cases similar to yours.

Advanced out-of-the-box PTAB and TTAB analytics are always at your fingertips.

API

Docket Alarm offers a powerful API (application programming interface) to developers that want to integrate case filings into their apps.

LAW FIRMS

Build custom dashboards for your attorneys and clients with live data direct from the court.

Automate many repetitive legal tasks like conflict checks, document management, and marketing.

FINANCIAL INSTITUTIONS

Litigation and bankruptcy checks for companies and debtors.

E-DISCOVERY AND LEGAL VENDORS

Sync your system to PACER to automate legal marketing.