

- [54] **METHOD AND APPARATUS FOR MEASURING THE AMOUNT OF EXERCISE**
- [75] Inventors: **Yasuji Kato; Hiroyuki Kobayashi,** both of Tokyo, Japan
- [73] Assignee: **Yamasa Tokei Meter Co., Ltd.,** Japan
- [21] Appl. No.: **522,945**
- [22] Filed: **May 14, 1990**

Related U.S. Application Data

- [63] Continuation-in-part of Ser. No. 115,943, Nov. 2, 1987, abandoned.

Foreign Application Priority Data

- Apr. 22, 1985 [JP] Japan 60-59963[U]
- Apr. 22, 1985 [JP] Japan 60-85970

- [51] Int. Cl.⁵ **G01C 22/00**
- [52] U.S. Cl. **364/561; 235/105; 364/565; 364/413.01**
- [58] Field of Search **364/565, 561, 556, 415, 364/413.01, 410, 143, 413.29; 340/323 R; 324/171, 168; 235/105; 36/136.1, 44, 72 B; 272/69, 70**

References Cited

U.S. PATENT DOCUMENTS

- 2,882,244 4/1959 Milton .
- 3,702,886 11/1972 Argauer et al. .
- 4,100,401 7/1978 Tutt et al. 368/10 X
- 4,192,000 3/1980 Lipsey 364/413.29
- 4,285,041 8/1981 Smith 364/415
- 4,322,609 3/1982 Kato 235/105
- 4,371,945 2/1983 Karr et al. 235/105 X
- 4,387,437 6/1983 Lowrey et al. 364/561
- 4,402,147 9/1983 Wu 235/105 X
- 4,460,823 7/1984 Ruehleemann 235/105
- 4,466,204 8/1984 Wu 235/105 X
- 4,510,704 4/1985 Johnson 235/105 X
- 4,525,074 6/1985 Murakami 368/10
- 4,560,861 12/1985 Kato et al. 235/105

- 4,560,928 12/1985 Hayward 324/172
- 4,578,769 3/1986 Frederick 364/565
- 4,703,445 10/1987 Dassler 364/561
- 4,771,394 9/1988 Cavanagh 364/561
- 4,962,469 10/1990 Ono et al. 364/561

FOREIGN PATENT DOCUMENTS

- 0115154 4/1980 Japan .

Primary Examiner—Parshotam S. Lall

Assistant Examiner—S. A. Melnick

Attorney, Agent, or Firm—Lowe, Price, LeBlanc & Becker

[57] ABSTRACT

A method and apparatus for accurately measuring an amount of exercise taken by a walker in terms of a walking speed, the distance traveled and the energy consumed. Impacts made by contacts of a foot of the walker with the ground are detected by a detector so as to produce corresponding contact signals. The number of the contact signals in a predetermined unit of time is counted by a processor to obtain a pitch in the unit of time, and a stride of the walker is calculated from said pitch and the height of the walker by the processor according to a predetermined empirical relationship of $ST = (0.1688 \times HT) / (1 - 0.0174 \times PI \times HT)$, where ST is the stride in meters, PI is the pitch in number of steps every 10 seconds, and HT is the walker's height in meters. The data on said height are inputted to the processor beforehand. Then the stride is multiplied by the pitch, to obtain and display a walking speed of the walker in said unit of time. The energy, e.g., in terms of calories consumed by the walker, is measured by the method of the present invention, utilizing an empirical relationship of $C = (0.0005 \times PI \times WT)$ (when $PI \leq 15$) or $C = (0.0013 \times PI - 0.0126) \times WT$ (when $PI > 15$), where C is the consumed energy in kcal in 10 seconds, PI is the pitch in number of steps every 10 seconds, and WT is the bodyweight of the walker in kg.

12 Claims, 10 Drawing Sheets

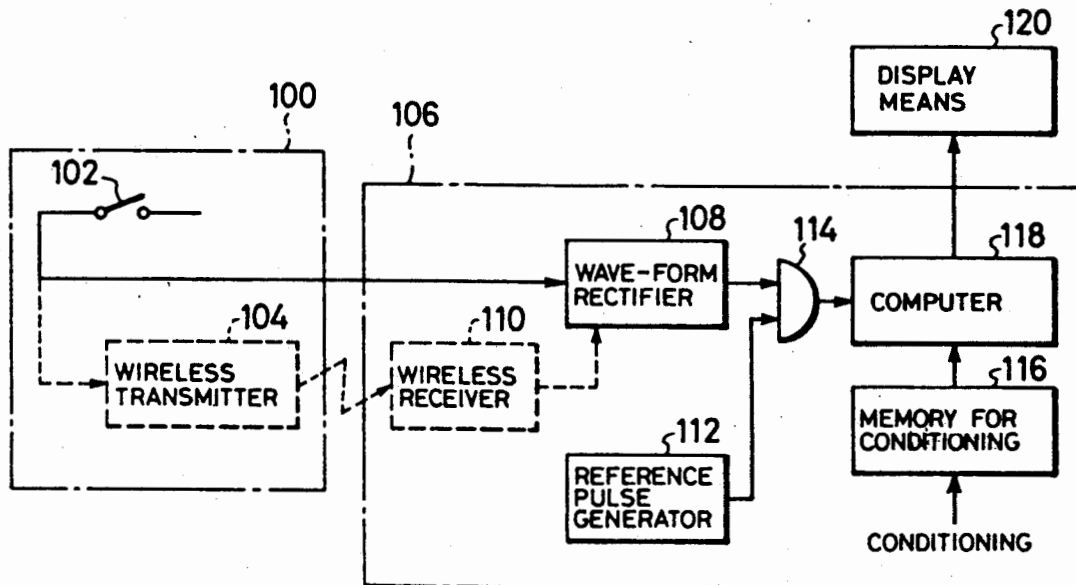


FIG. 1

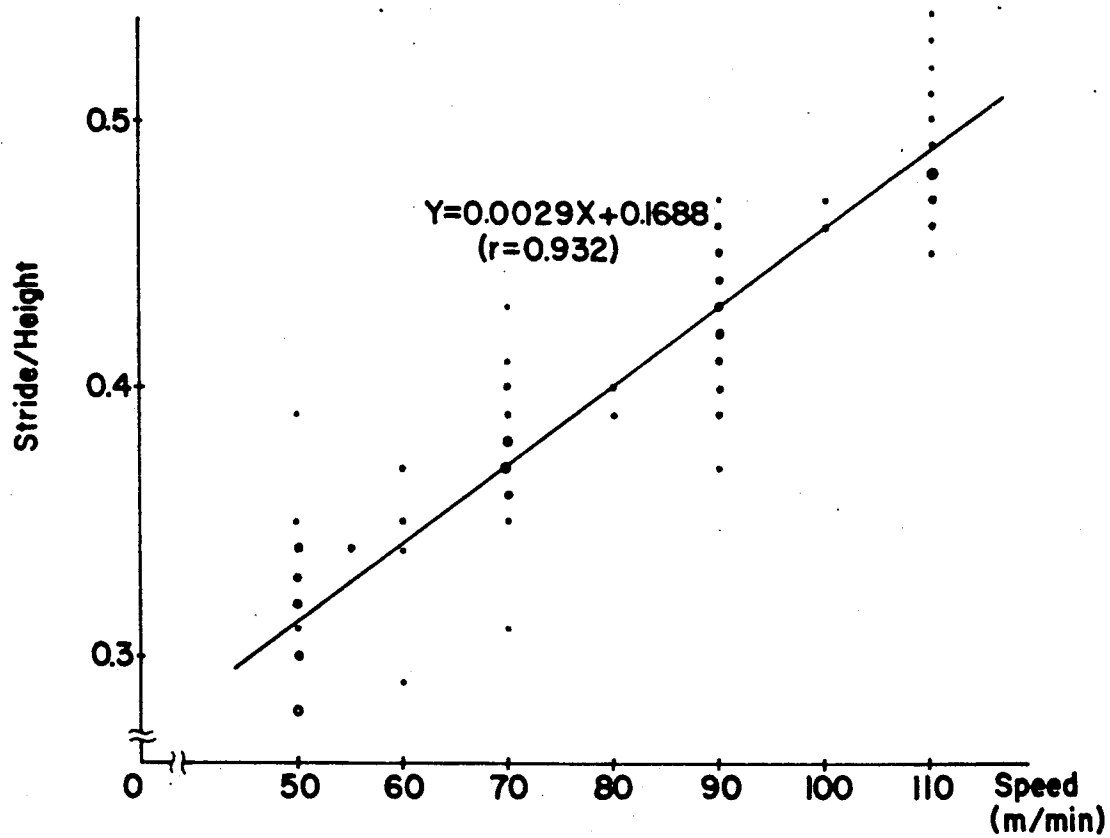


FIG. 2

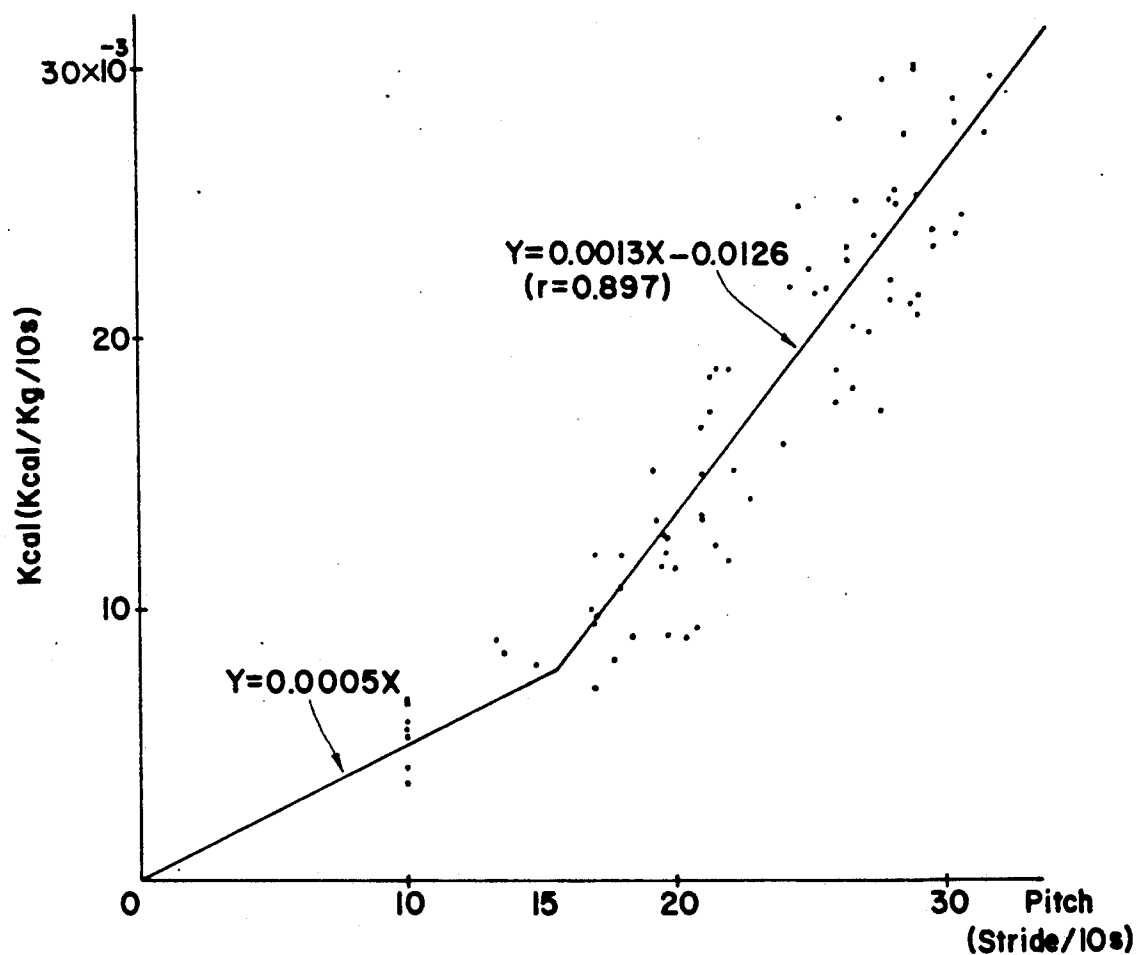


FIG. 3

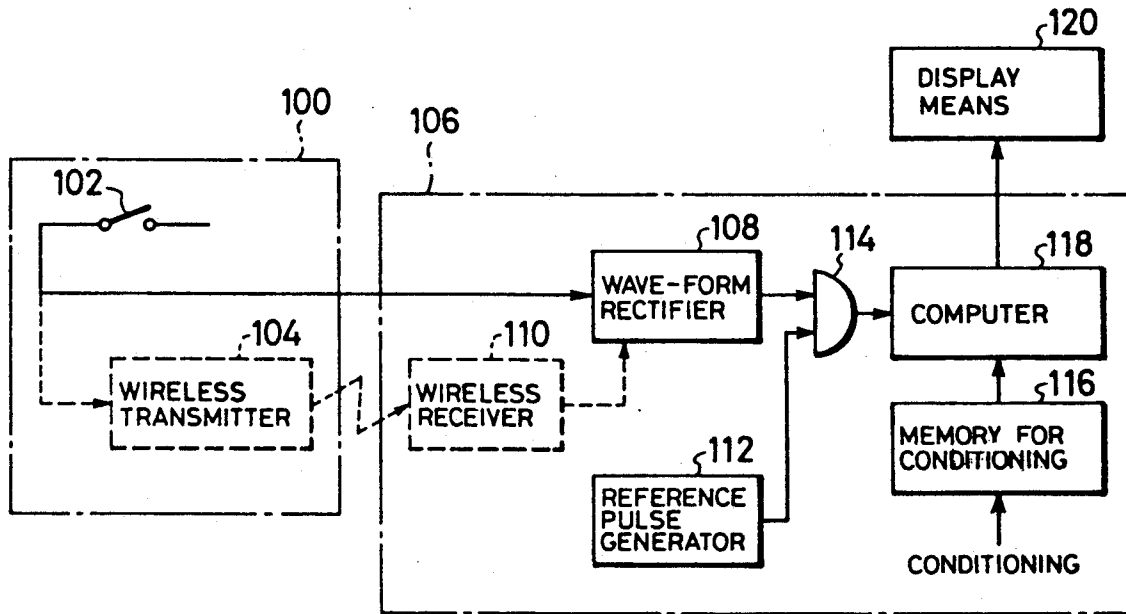


FIG. 4

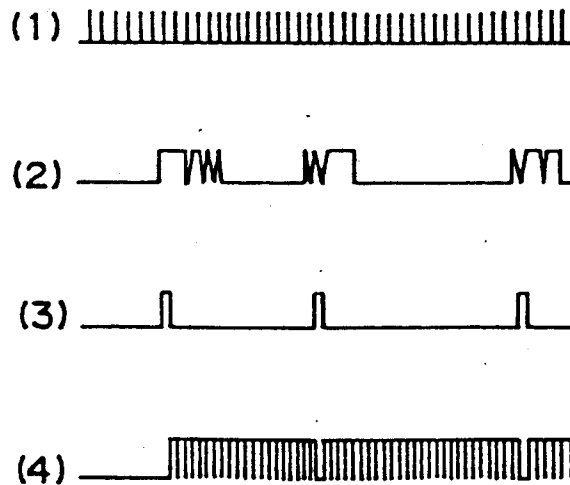


FIG. 5

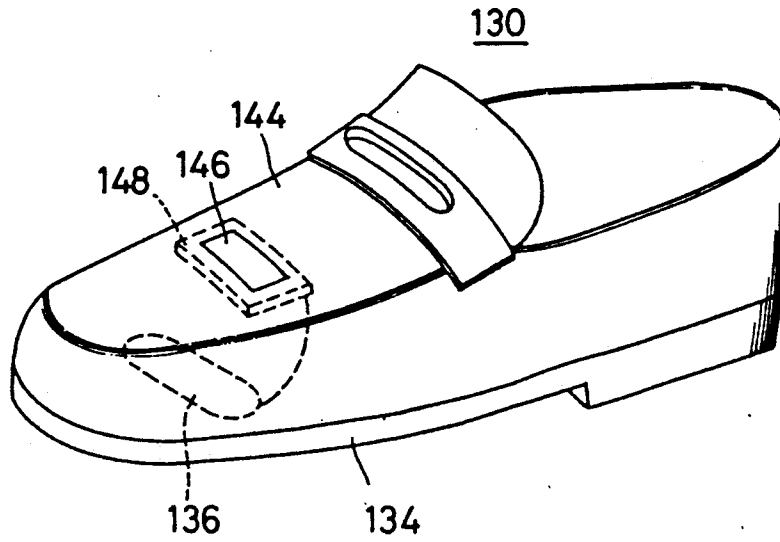
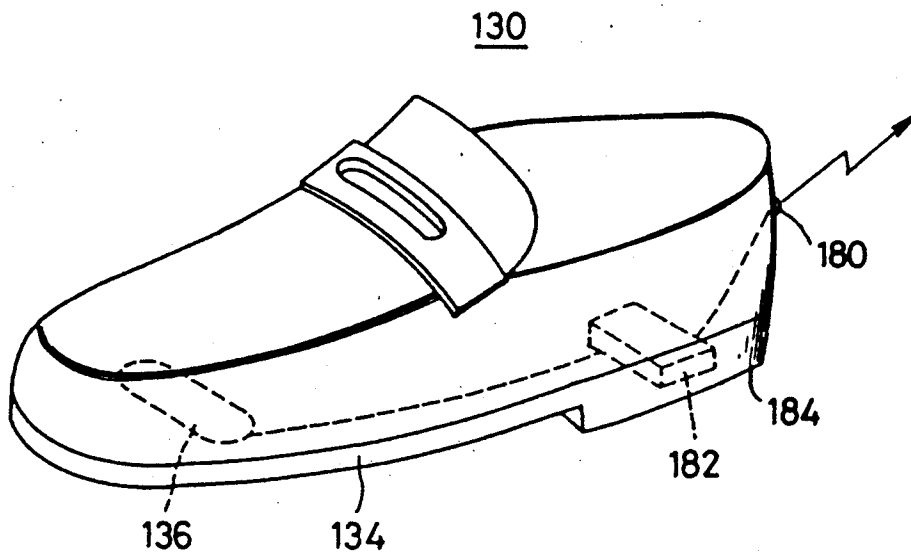


FIG. 8



Explore Litigation Insights

Docket Alarm provides insights to develop a more informed litigation strategy and the peace of mind of knowing you're on top of things.

Real-Time Litigation Alerts



Keep your litigation team up-to-date with **real-time alerts** and advanced team management tools built for the enterprise, all while greatly reducing PACER spend.

Our comprehensive service means we can handle Federal, State, and Administrative courts across the country.

Advanced Docket Research



With over 230 million records, Docket Alarm's cloud-native docket research platform finds what other services can't. Coverage includes Federal, State, plus PTAB, TTAB, ITC and NLRB decisions, all in one place.

Identify arguments that have been successful in the past with full text, pinpoint searching. Link to case law cited within any court document via Fastcase.

Analytics At Your Fingertips



Learn what happened the last time a particular judge, opposing counsel or company faced cases similar to yours.

Advanced out-of-the-box PTAB and TTAB analytics are always at your fingertips.

API

Docket Alarm offers a powerful API (application programming interface) to developers that want to integrate case filings into their apps.

LAW FIRMS

Build custom dashboards for your attorneys and clients with live data direct from the court.

Automate many repetitive legal tasks like conflict checks, document management, and marketing.

FINANCIAL INSTITUTIONS

Litigation and bankruptcy checks for companies and debtors.

E-DISCOVERY AND LEGAL VENDORS

Sync your system to PACER to automate legal marketing.