

[54] **EXERCISE MEASURING INSTRUMENT**  
 [75] Inventors: Haruo Ono; Satoshi Kinoshita; Fusao Suga, all of Tokyo, Japan

4,510,704 4/1985 Johnson ..... 235/105  
 4,571,680 5/1982 Wu ..... 364/561  
 4,651,446 3/1987 Yukawa et al. .... 235/105  
 4,741,001 4/1988 Ma ..... 364/561

[73] Assignee: Casio Computer Co., Ltd., Tokyo, Japan

FOREIGN PATENT DOCUMENTS

2192475 1/1988 United Kingdom ..... 235/105

[21] Appl. No.: 339,179

Primary Examiner—Parshotam S. Lall

[22] Filed: Apr. 14, 1989

Assistant Examiner—Michael Zanelli

[30] Foreign Application Priority Data

Attorney, Agent, or Firm—Frishauf, Holtz, Goodman & Woodward

Apr. 18, 1988 [JP] Japan ..... 63-51776[U]  
 Jun. 15, 1988 [JP] Japan ..... 63-79116[U]  
 Oct. 31, 1988 [JP] Japan ..... 63-142496[U]

[51] Int. Cl.<sup>5</sup> ..... G01C 22/00  
 [52] U.S. Cl. .... 364/561; 235/105  
 [58] Field of Search ..... 364/561, 565, 566, 564; 235/105; 272/DIG. 9; 377/24.2; 324/165, 166

[57] ABSTRACT

An exercise measuring instrument according to the present invention employs an acceleration sensor which comprises a piezoelectric piece having a pair of piezoelectric elements stuck to each other. An output waveform of the acceleration sensor is supplied to an amplifier, gain of which is changed in accordance with an exercise mode selected out of a walking mode, an exercise-walking mode and a jogging mode, and thereby an output level of the amplifier is kept at somewhat an equal voltage level, although the voltage level of the output waveform of the acceleration sensor is different between the exercise modes. This improvement allows an accurate measurement of exercise.

[56] References Cited

U.S. PATENT DOCUMENTS

3,797,010 3/1974 Adler et al. .... 272/DIG. 9  
 4,144,568 3/1979 Hiller et al. .... 364/556  
 4,192,000 3/1980 Lipsey ..... 364/413.29  
 4,220,996 9/1980 Searcy ..... 364/561  
 4,223,211 9/1980 Allsen et al. .... 377/24.2  
 4,387,437 6/1983 Lowrey et al. .... 235/105  
 4,466,204 8/1984 Wu ..... 235/105

34 Claims, 21 Drawing Sheets

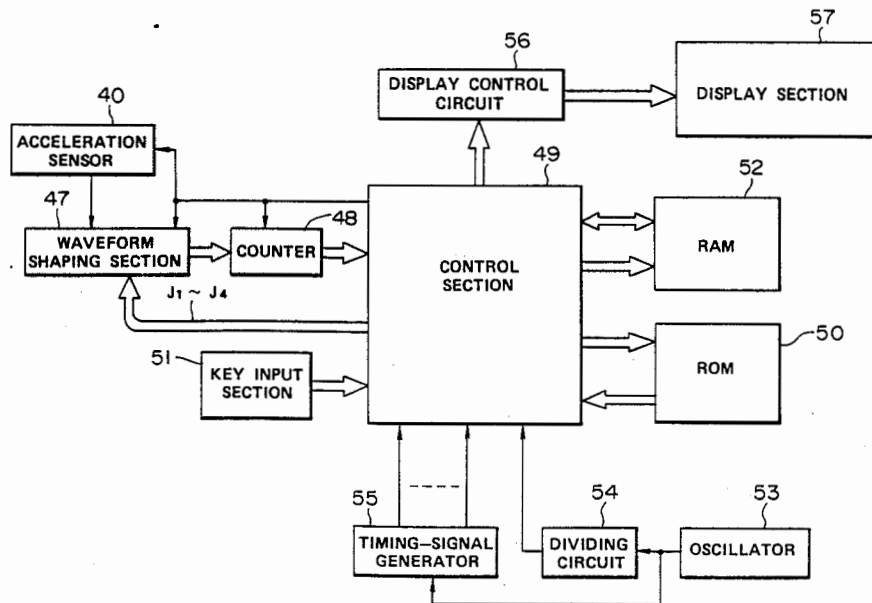
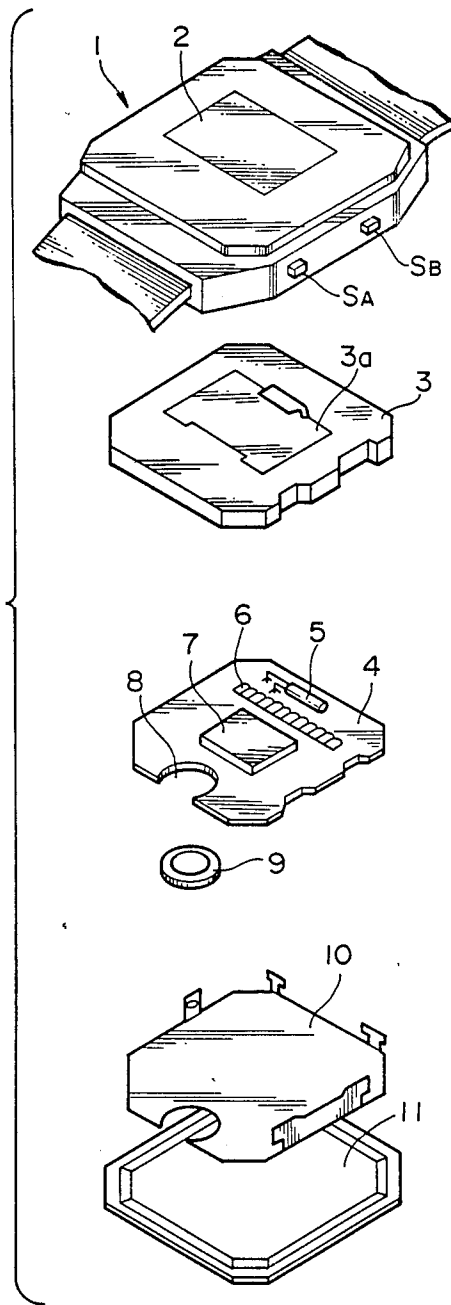
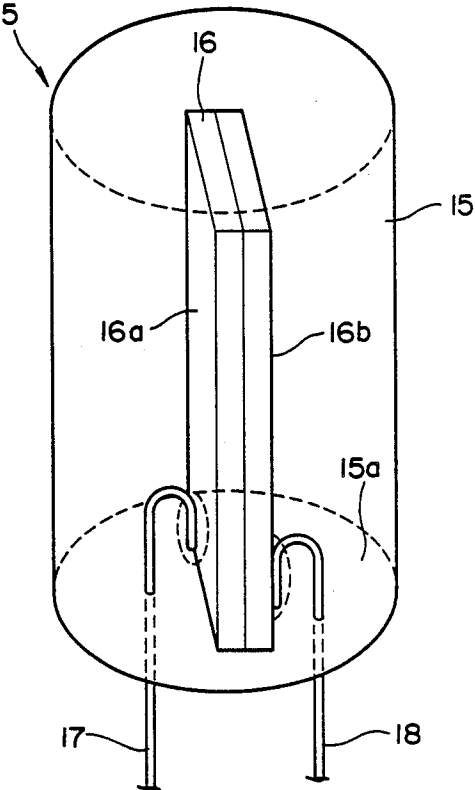
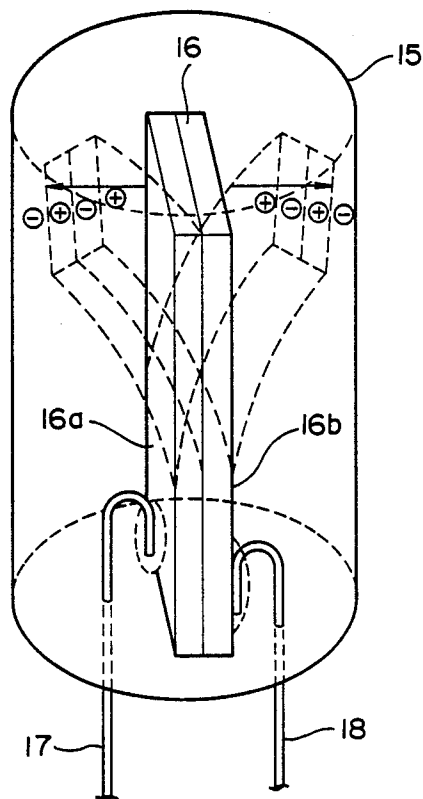


FIG. 1

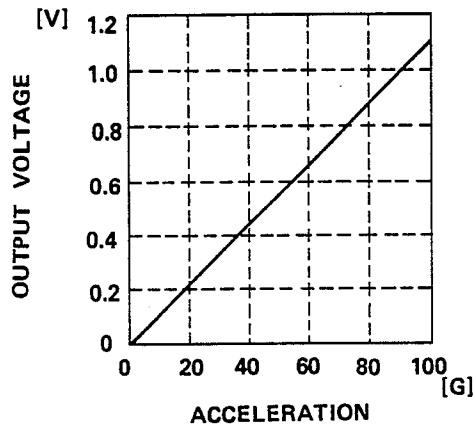




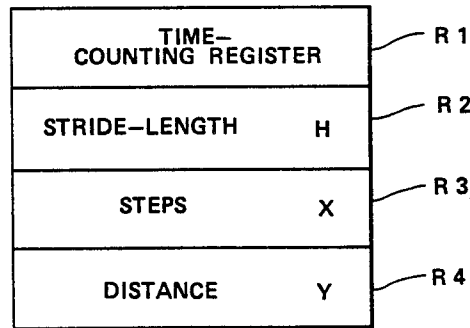
**FIG. 2**



**FIG. 3**



**FIG. 4**



**FIG. 9**

# Explore Litigation Insights

Docket Alarm provides insights to develop a more informed litigation strategy and the peace of mind of knowing you're on top of things.

## Real-Time Litigation Alerts



Keep your litigation team up-to-date with **real-time alerts** and advanced team management tools built for the enterprise, all while greatly reducing PACER spend.

Our comprehensive service means we can handle Federal, State, and Administrative courts across the country.

## Advanced Docket Research



With over 230 million records, Docket Alarm's cloud-native docket research platform finds what other services can't. Coverage includes Federal, State, plus PTAB, TTAB, ITC and NLRB decisions, all in one place.

Identify arguments that have been successful in the past with full text, pinpoint searching. Link to case law cited within any court document via Fastcase.

## Analytics At Your Fingertips



Learn what happened the last time a particular judge, opposing counsel or company faced cases similar to yours.

Advanced out-of-the-box PTAB and TTAB analytics are always at your fingertips.

## API

Docket Alarm offers a powerful API (application programming interface) to developers that want to integrate case filings into their apps.

## LAW FIRMS

Build custom dashboards for your attorneys and clients with live data direct from the court.

Automate many repetitive legal tasks like conflict checks, document management, and marketing.

## FINANCIAL INSTITUTIONS

Litigation and bankruptcy checks for companies and debtors.

## E-DISCOVERY AND LEGAL VENDORS

Sync your system to PACER to automate legal marketing.