

- [54] APPARATUS FOR TESTING PHYSICAL CONDITION OF A SUBJECT
- [75] Inventors: Oscar Jimenez, Miami; Frank J. Bianco, Pembroke Pines, both of Fla.
- [73] Assignee: Biotechnology, Inc., Miami, Fla.
- [21] Appl. No.: 145,765
- [22] Filed: Apr. 30, 1980
- [51] Int. Cl.³ A61B 5/02
- [52] U.S. Cl. 128/689; 128/706; 128/707; 128/782
- [58] Field of Search 128/668, 670-672, 128/639, 644, 687-691, 706-707, 702-704, 718, 779, 782; 364/410, 413, 415, 417

[56] References Cited

U.S. PATENT DOCUMENTS

3,395,698	8/1968	Morehouse	128/707
3,518,985	7/1970	Quinton	128/707
3,534,727	10/1970	Roman	128/644
3,675,640	7/1972	Gatts	128/671
3,826,246	7/1974	Paddi et al.	128/644 X
3,978,849	9/1976	Geneen	128/690
4,053,951	10/1977	Hudspeth et al.	128/670
4,101,071	7/1978	Brejnik et al.	128/687
4,108,166	8/1978	Schmid	128/706
4,112,928	9/1978	Putsch	128/707
4,144,568	3/1979	Hiller et al.	364/410
4,181,135	1/1980	Andresen et al.	128/702 X
4,192,000	4/1980	Lipsey	364/415
4,202,350	5/1980	Walton	128/690
4,216,956	8/1980	Yamamura et al.	272/70
4,220,996	9/1980	Searcy	364/561
4,223,211	9/1980	Allsen et al.	235/92 DN

OTHER PUBLICATIONS

Kato, S. et al., "Application of Micro-Computer to Integrated Sleep Monitor", *Euromicro* (Netherlands) V3, #4, Oct. 1977.

Primary Examiner—Kyle L. Howell
 Assistant Examiner—Francis J. Jaworski
 Attorney, Agent, or Firm—Lowe, King, Price & Becker

[57] ABSTRACT

The physical condition of a subject is tested by a transducer mounted on the subject which derives a first signal indicative of heart activity. An electronic instrument housing carried by the subject includes terminals responsive to the first signal and (a) an inertial member for monitoring the quantity of repetitive actions taken by a limb of the subject and for deriving a second signal indicative of the quantity, (b) a keyboard for enabling signals to be derived indicative of numerical quantities associated with plural physiological parameters of the subject, (c) a clock source for deriving timing signals, (d) a digital computer responsive to the first, second, timing and keyboard signals for deriving plural digital output signals indicative of different physical activities of the tested subject, (e) a visual digital indicator, (f) plural key switches, each associated with a different one of the physical activities, and (g) circuitry responsive to activation of the plural key switches for selectively coupling different ones of the plural output signals to the visual indicator so only one of the output signals is supplied to the indicator at a time.

53 Claims, 15 Drawing Figures

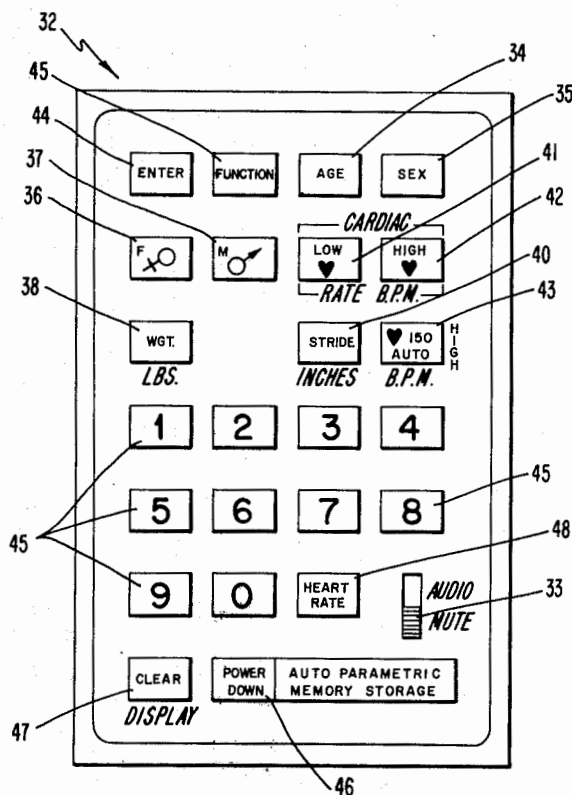


Fig. 1

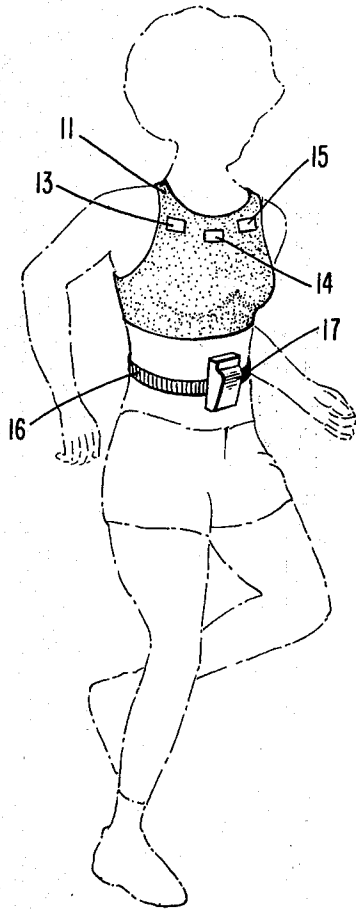


Fig. 2

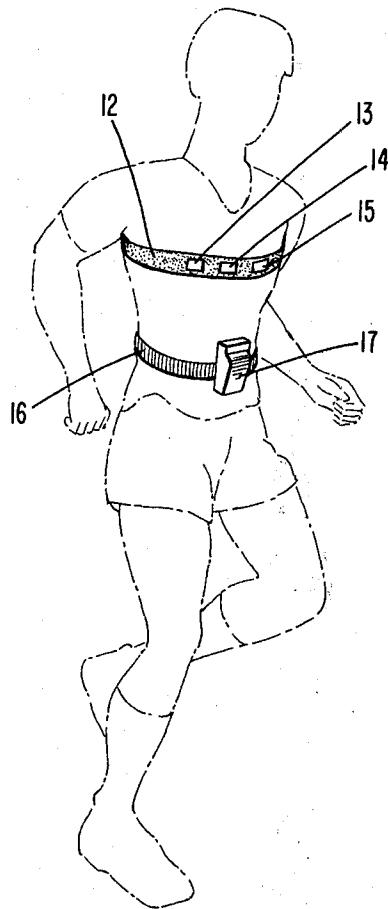
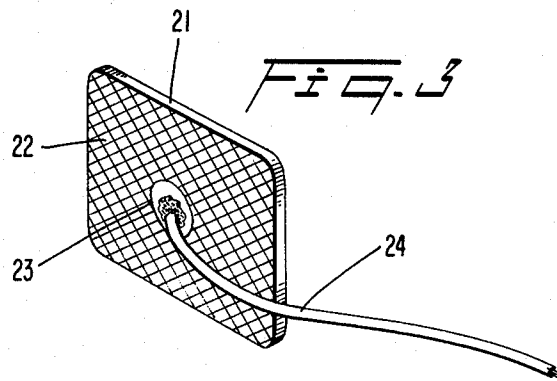
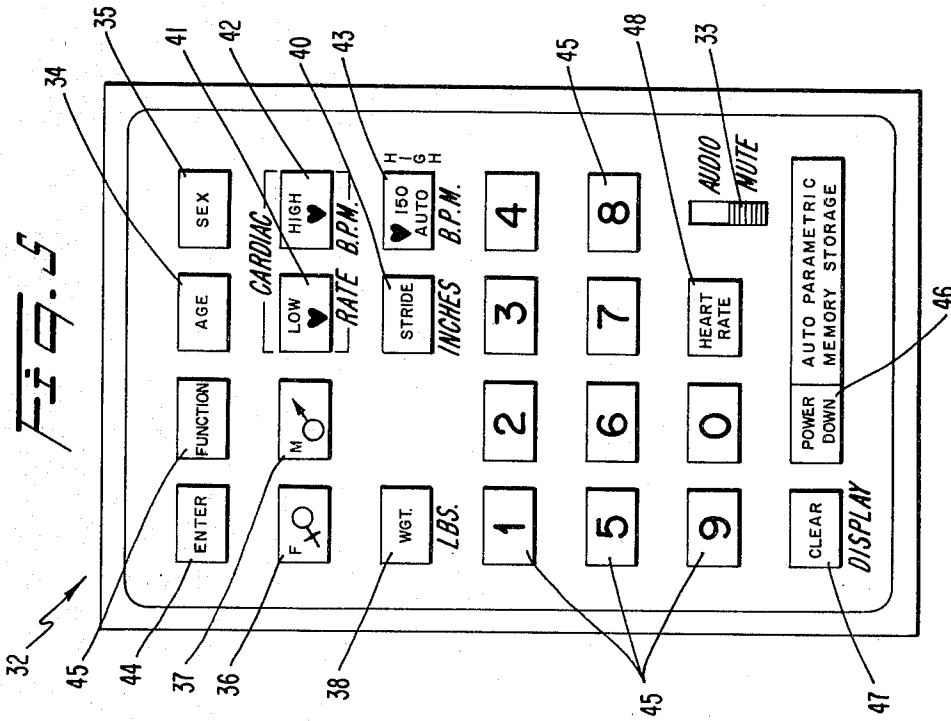
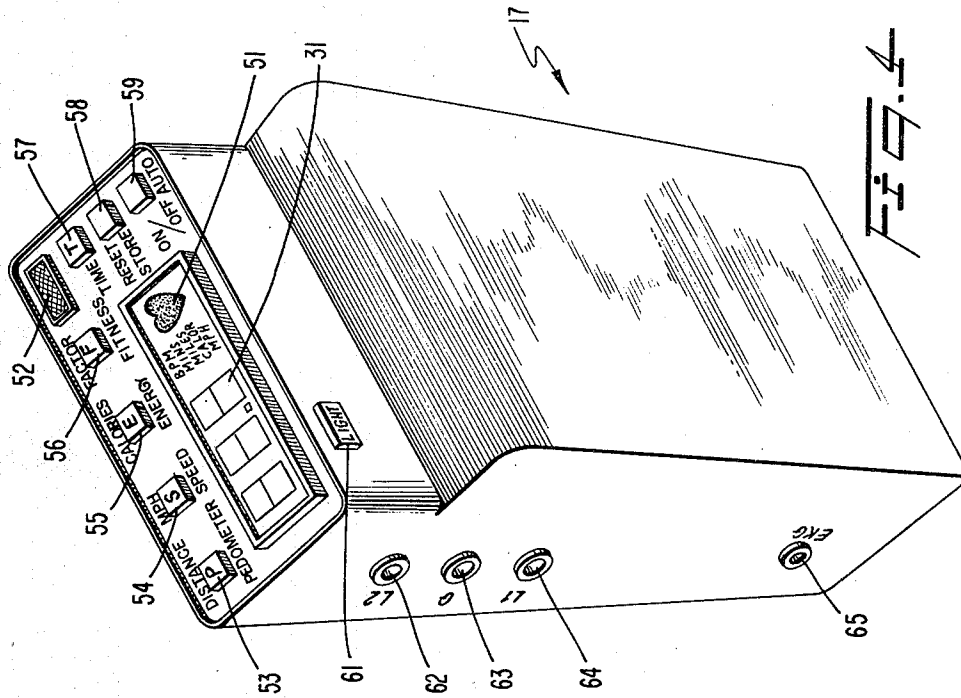
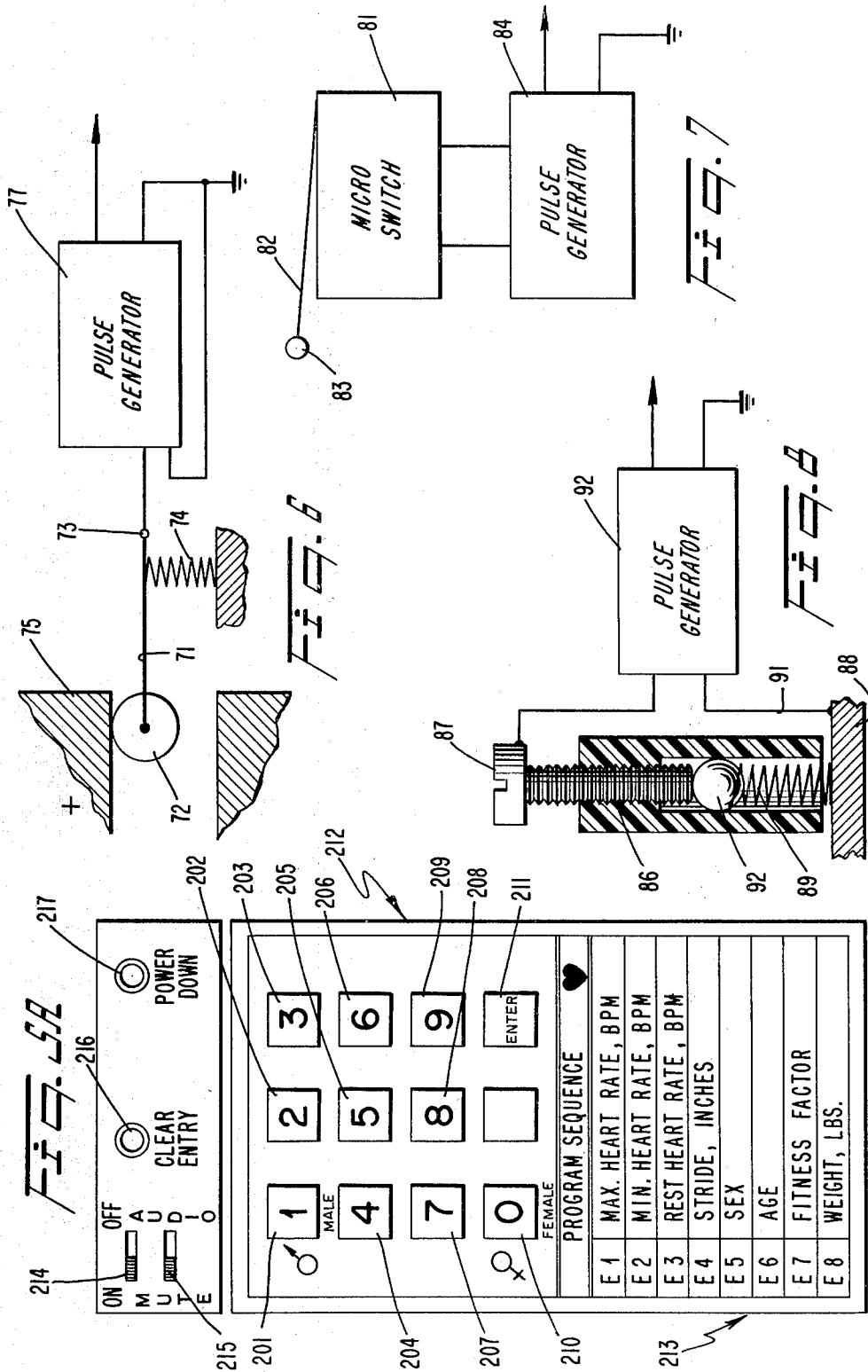


Fig. 3







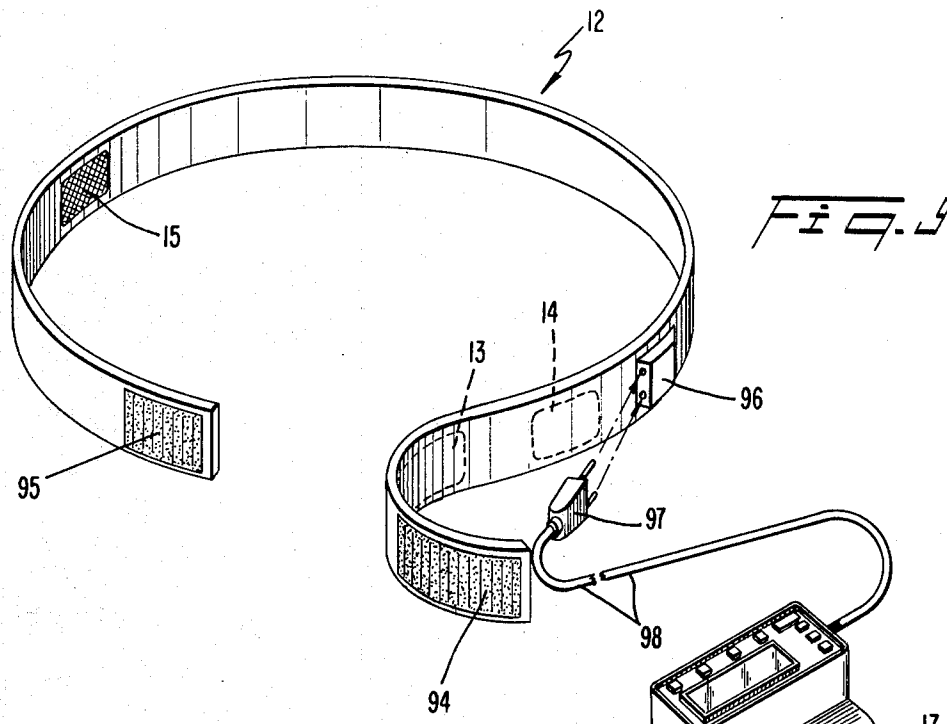
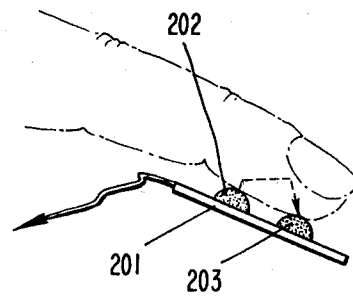
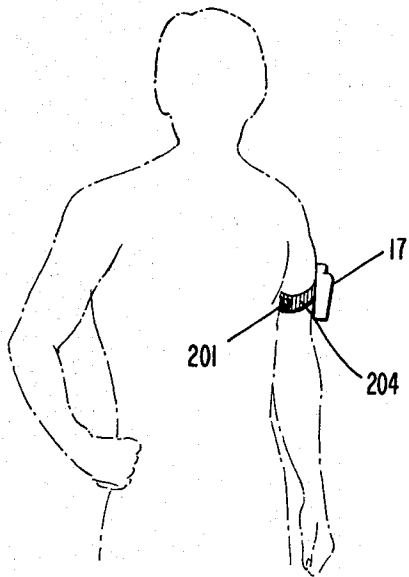


FIG. 11



Explore Litigation Insights

Docket Alarm provides insights to develop a more informed litigation strategy and the peace of mind of knowing you're on top of things.

Real-Time Litigation Alerts



Keep your litigation team up-to-date with **real-time alerts** and advanced team management tools built for the enterprise, all while greatly reducing PACER spend.

Our comprehensive service means we can handle Federal, State, and Administrative courts across the country.

Advanced Docket Research



With over 230 million records, Docket Alarm's cloud-native docket research platform finds what other services can't. Coverage includes Federal, State, plus PTAB, TTAB, ITC and NLRB decisions, all in one place.

Identify arguments that have been successful in the past with full text, pinpoint searching. Link to case law cited within any court document via Fastcase.

Analytics At Your Fingertips



Learn what happened the last time a particular judge, opposing counsel or company faced cases similar to yours.

Advanced out-of-the-box PTAB and TTAB analytics are always at your fingertips.

API

Docket Alarm offers a powerful API (application programming interface) to developers that want to integrate case filings into their apps.

LAW FIRMS

Build custom dashboards for your attorneys and clients with live data direct from the court.

Automate many repetitive legal tasks like conflict checks, document management, and marketing.

FINANCIAL INSTITUTIONS

Litigation and bankruptcy checks for companies and debtors.

E-DISCOVERY AND LEGAL VENDORS

Sync your system to PACER to automate legal marketing.