

[54] ELECTRONIC PEDOMETER

[75] Inventors: Lawrence J. Karr, 220 Horizon St., Venice, Calif. 90291; Gary L. Wasserman, 2669 Rambla Pacifico, Malibu, Calif. 90265; George R. Boehme, Venice, Calif.

[73] Assignees: Lawrence Joseph Karr; Gary Lee Wasserman, both of Marine del Rey, Calif.

[21] Appl. No.: 211,684

[22] Filed: Dec. 1, 1980

[51] Int. Cl.³ G01C 22/00

[52] U.S. Cl. 364/561; 364/410; 235/92 DN; 235/105; 340/323 R

[58] Field of Search 272/70, 73, 100, DIG. 6; 364/413, 560, 561, 565, 410; 367/99; 235/92 DN, 92 MT, 92 PE, 92 CP, 105; 340/323 R

[56] References Cited

U.S. PATENT DOCUMENTS

- 3,492,582 1/1970 Heywood 340/323 R
- 4,049,954 9/1977 Da Costa Vieira et al. 364/560
- 4,053,755 10/1977 Sherrill 235/92 DN
- 4,220,996 9/1980 Searcy 364/561
- 4,223,211 9/1980 Allsen et al. 235/92 DN

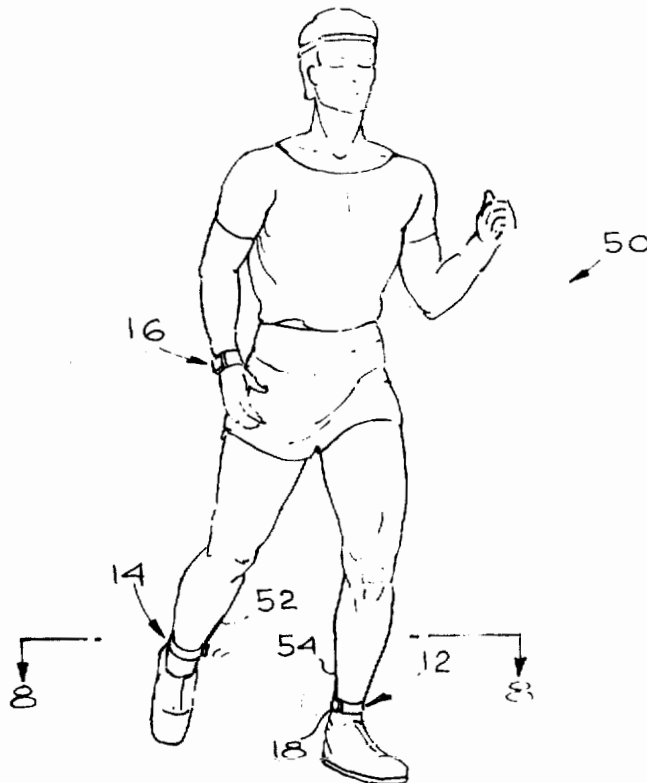
4,283,712 8/1981 Goody 340/323 R
4,285,041 8/1981 Smith 235/105

Primary Examiner—Gary Chin
Attorney, Agent, or Firm—Reagin & King

[57] ABSTRACT

A pedometer is disclosed which calculates the distance a user walks, jogs or runs by electronically measuring the length of each stride taken by the user. Stride length is measured using ultrasonic waves. The pedometer comprises an ultrasonic generator module which is strapped to one leg of the user. An ultrasonic detector module is strapped to the other leg of the user. The generator module emits pulses of ultrasonic energy which are detected by the detector module. A processor and display module in the form of a wristwatch is also provided. The processor module is used to calculate stride length based on the speed of sound and the time delay between pulses emitted and detected by the leg-mounted modules. The pedometer is capable of displaying on a digital display the distance traveled, time per unit distance, elapsed time and time of day. The pedometer is also programmed to compensate for a variety of measurement errors.

15 Claims, 12 Drawing Figures



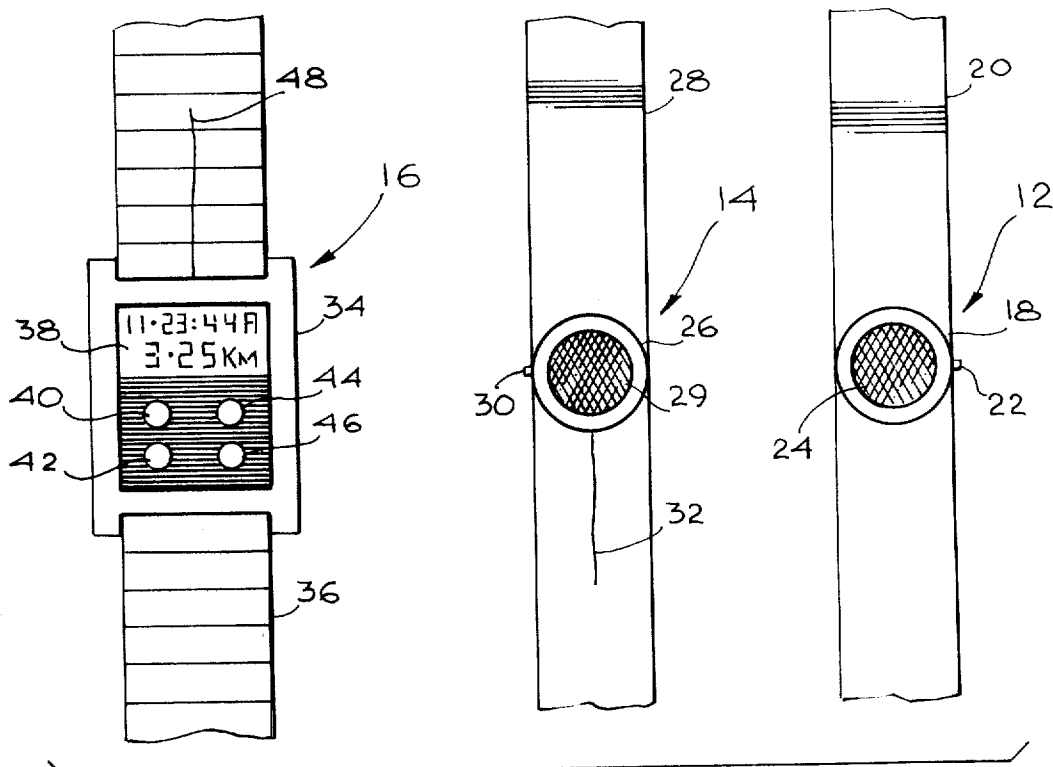


Fig. 1

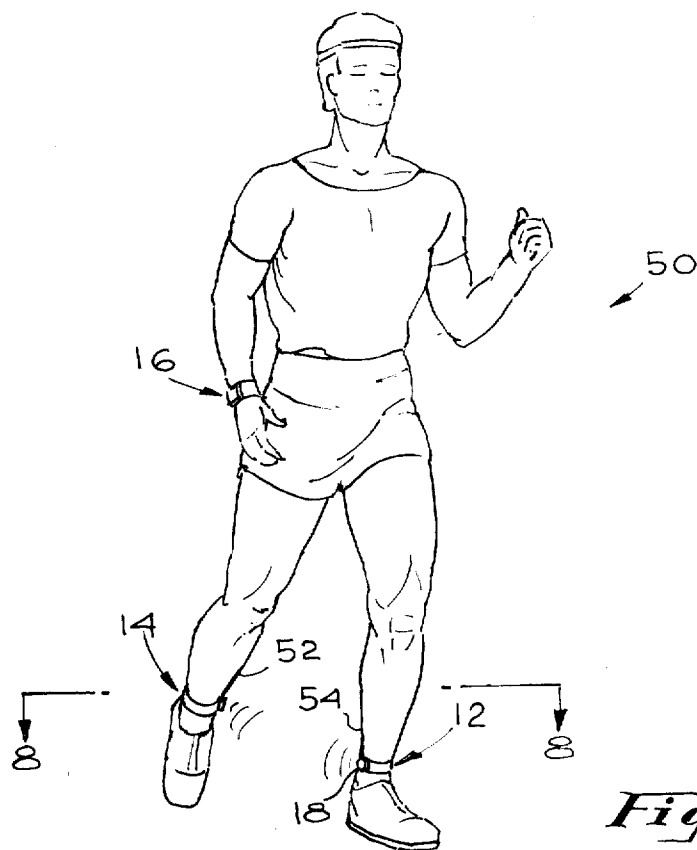


Fig. 2

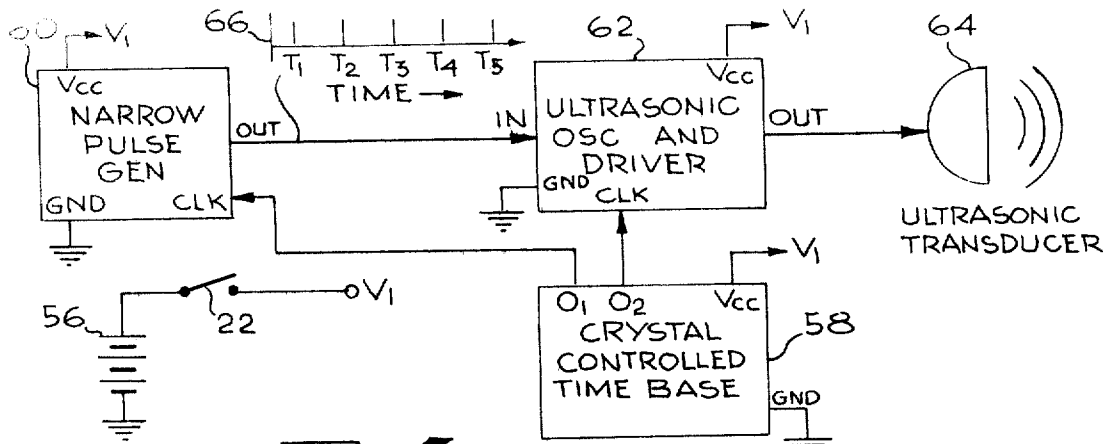


Fig. 3

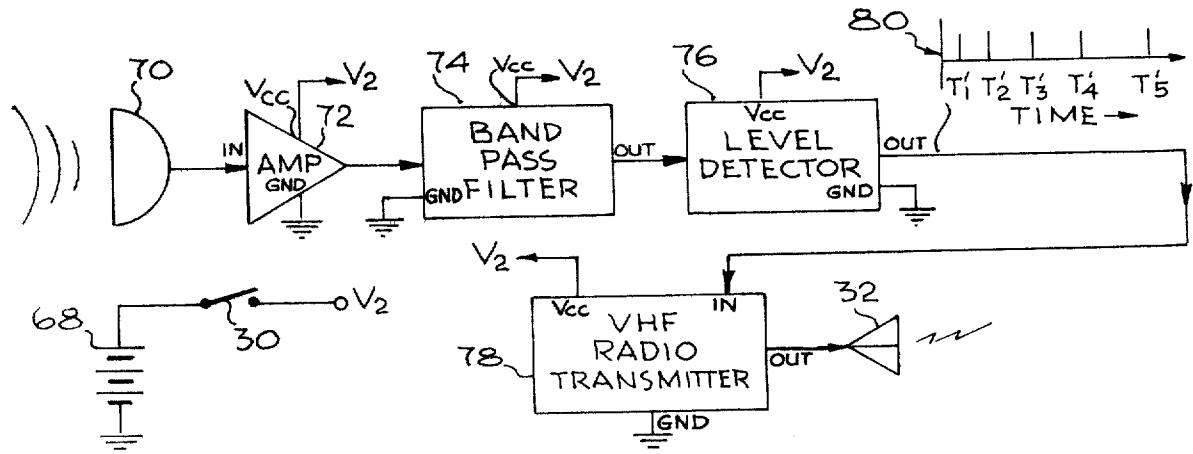


Fig. 4

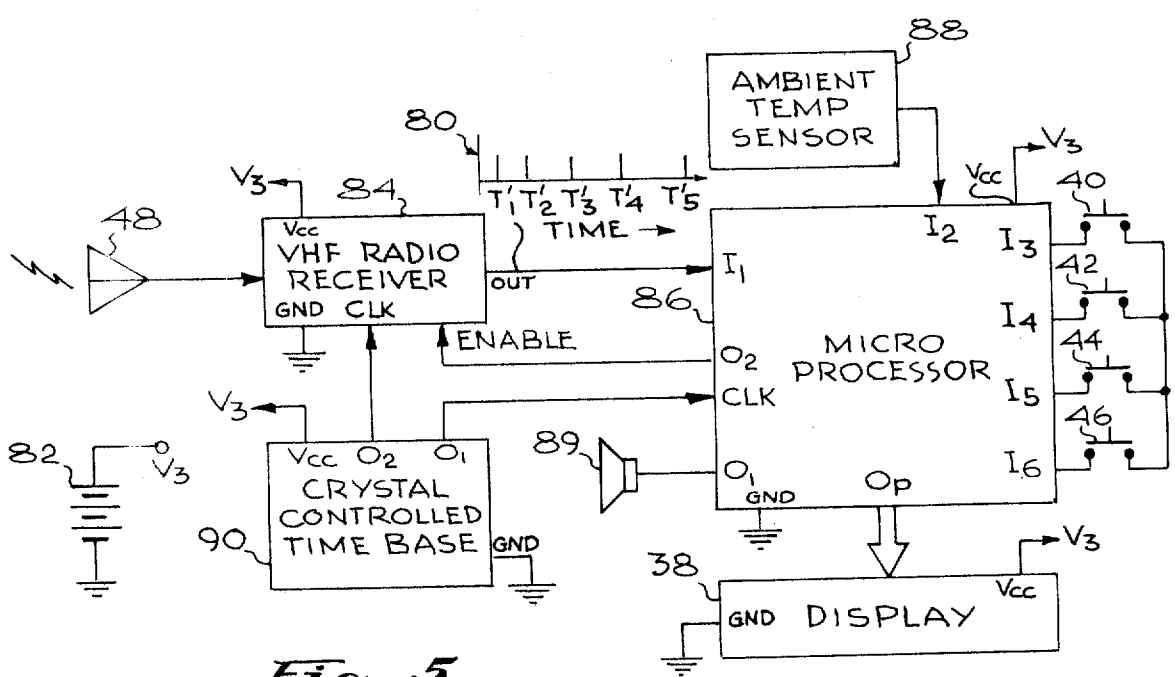


Fig. 5

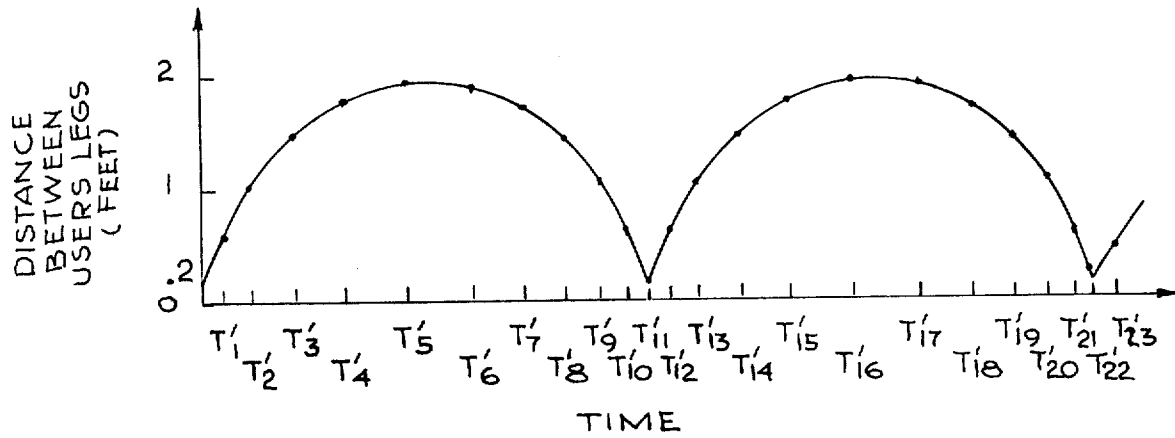


Fig. 6

PULSE	TIME (SEC)	PULSE	TIME (SEC)	PULSE	TIME (SEC)
T' ₁	= .03045	T' ₉	= .27090	T' ₁₇	= .51168
T' ₂	= .06090	T' ₁₀	= .30045	T' ₁₈	= .54144
T' ₃	= .09126	T' ₁₁	= .33000	T' ₁₉	= .57117
T' ₄	= .12153	T' ₁₂	= .36045	T' ₂₀	= .60090
T' ₅	= .15182	T' ₁₃	= .39090	T' ₂₁	= .63054
T' ₆	= .18171	T' ₁₄	= .42126	T' ₂₂	= .66009
T' ₇	= .21144	T' ₁₅	= .45153	T' ₂₃	= .69045
T' ₈	= .24126	T' ₁₆	= .48171		

Fig. 7

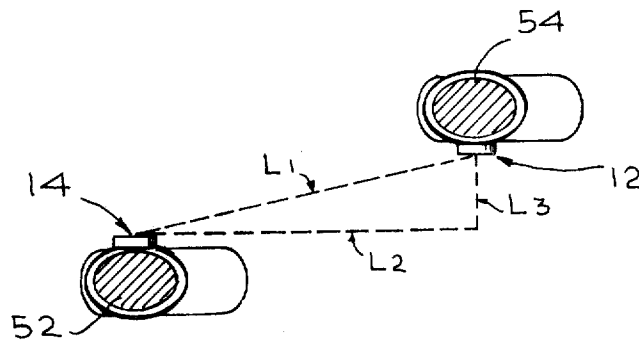


Fig. 8

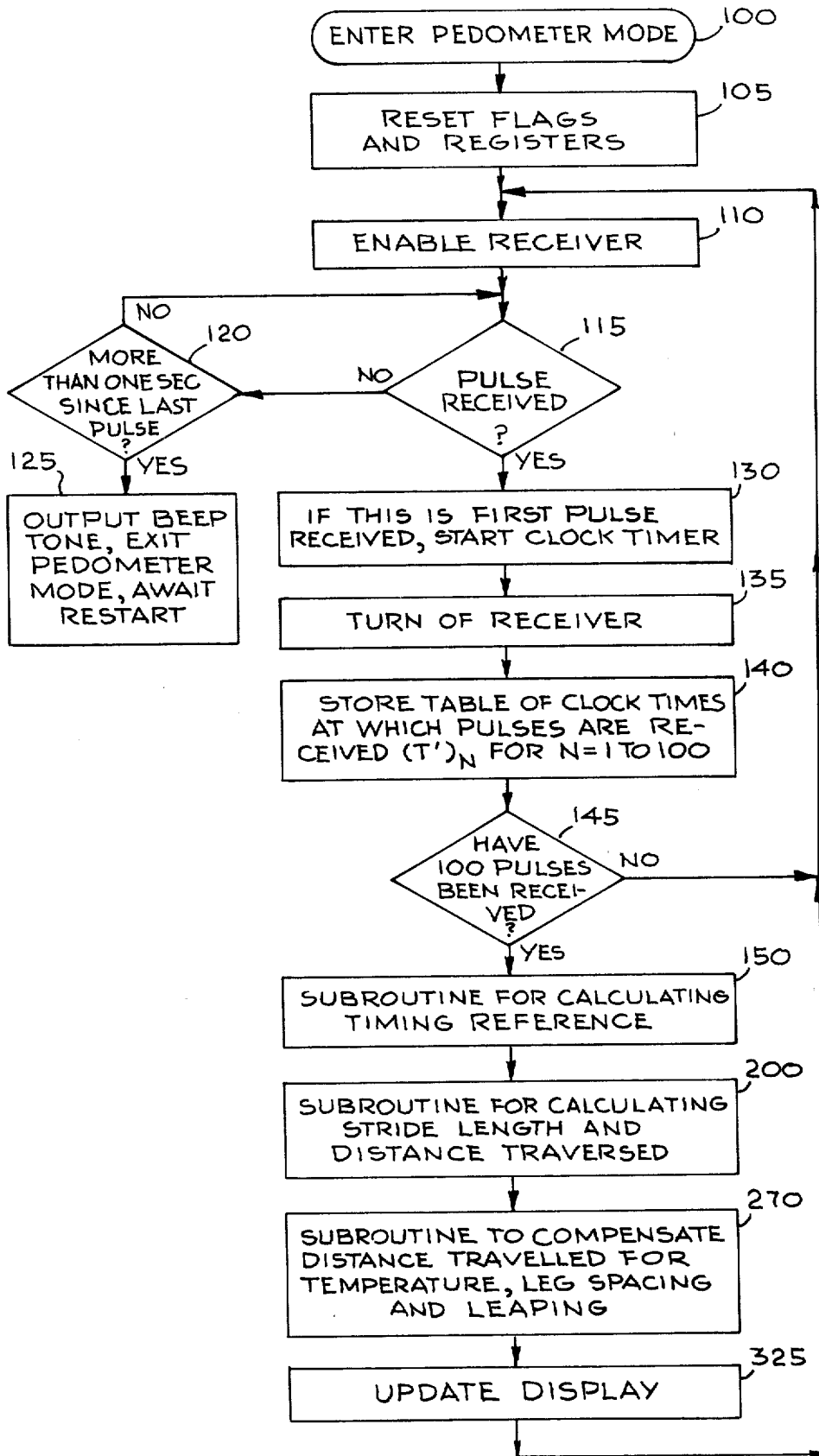


Fig. 9

Explore Litigation Insights

Docket Alarm provides insights to develop a more informed litigation strategy and the peace of mind of knowing you're on top of things.

Real-Time Litigation Alerts



Keep your litigation team up-to-date with **real-time alerts** and advanced team management tools built for the enterprise, all while greatly reducing PACER spend.

Our comprehensive service means we can handle Federal, State, and Administrative courts across the country.

Advanced Docket Research



With over 230 million records, Docket Alarm's cloud-native docket research platform finds what other services can't. Coverage includes Federal, State, plus PTAB, TTAB, ITC and NLRB decisions, all in one place.

Identify arguments that have been successful in the past with full text, pinpoint searching. Link to case law cited within any court document via Fastcase.

Analytics At Your Fingertips



Learn what happened the last time a particular judge, opposing counsel or company faced cases similar to yours.

Advanced out-of-the-box PTAB and TTAB analytics are always at your fingertips.

API

Docket Alarm offers a powerful API (application programming interface) to developers that want to integrate case filings into their apps.

LAW FIRMS

Build custom dashboards for your attorneys and clients with live data direct from the court.

Automate many repetitive legal tasks like conflict checks, document management, and marketing.

FINANCIAL INSTITUTIONS

Litigation and bankruptcy checks for companies and debtors.

E-DISCOVERY AND LEGAL VENDORS

Sync your system to PACER to automate legal marketing.