

TRANSLATOR'S STATEMENT OF ACCURACY

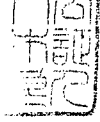
I, the undersigned, NAGAI Marie at 4th Floor, Nakayamate Inaoka Bldg., 1-22-6 Nakayamate Dori, Chuo-ku, Kobe 650-0004 JAPAN (Telephone Number: +81-78-272-0480), hereby declare that I am conversant with Japanese and English languages and that the attached is, to the best of my knowledge and belief, true translation of:

- Certificate of Library Materials Owned by National Diet Library

Dated this July 14, 2016.

Marie Nagai

[NAGAI Marie]



(Certificate Number)

DLU No. 1601045-2-46

Seal of
Manager of
NDL Users
Service

Certificate of Library Materials
Owned by National Diet Library

This is to certificate that:

- | | | |
|---|--|--|
| 1 | Name of library materials
and call mark | Operation Association Magazine
Z5-333 |
| | Publication date,
volume and number, etc. | March 1, 1995
Volume 37, No. 3 |
| | Pages | Front page, Illustration, Table of
contents, Pages 26-29, and Colophon |
| | Listed articles | Tobu Railway 9050 Series Railroad Car
New type railroad car profile guide,
Tobu Railway 9050 Series Railroad Car |
| 2 | Received date | March 9, 1995 |

June 13, 2016

The manager of National Diet Library Users Service

ISHIWATARI, Yuko

Seal of
Manager of
NDL Users
Service

(証明番号)

国図利 1601045-2-46 号

国立国会図書館所蔵図書館資料に関する証明書

以下のとおり相違ないことを証明する。

- | | | |
|---|--------------|--|
| 1 | 図書館資料名及び請求記号 | 運転協会誌
Z5-333 |
| | 出版年、巻号等 | 平成7年3月1日
第37巻第3号 |
| | ページ | 表紙、図版、目次、26～29 ページ、奥付 |
| | 掲載記事 | 東武鉄道 9050 系電車
新型車両プロフィールガイド 東武鉄道 9050 系電車 |
| 2 | 受入年月日 | 1995年3月9日 |

平成 28 年 6 月 13 日

国立国会図書館利用者サービス部長

石渡 裕子



ZZ-333

昭和58年3月31日現在三編集巻3号

平成7年3月1日(第9月)版(日発行)第37巻第3号

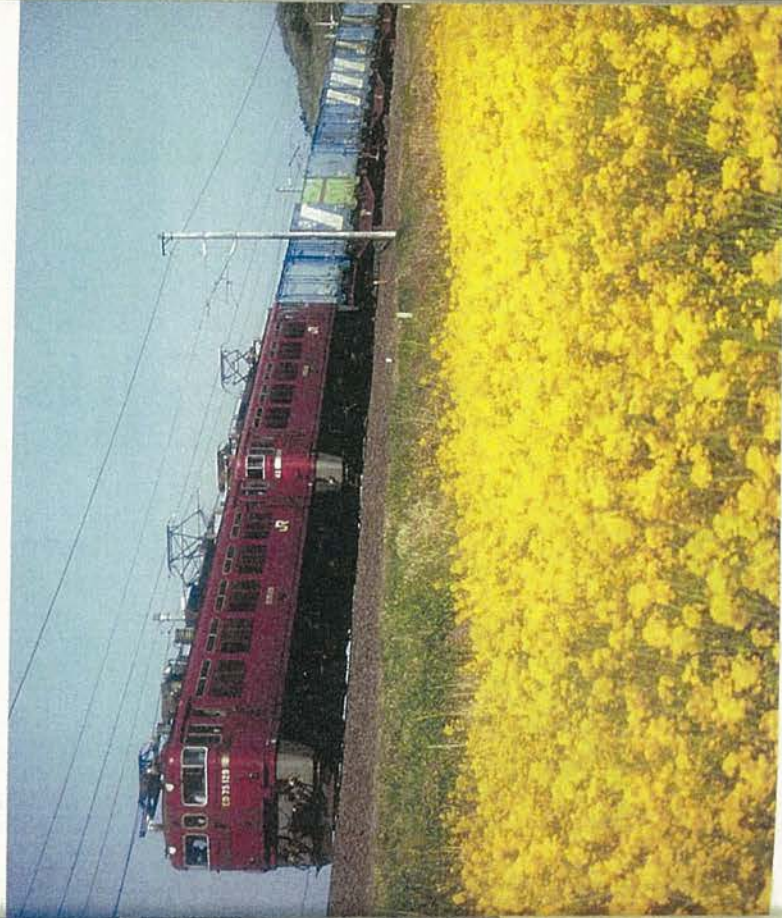
運輸協会誌

3

1995

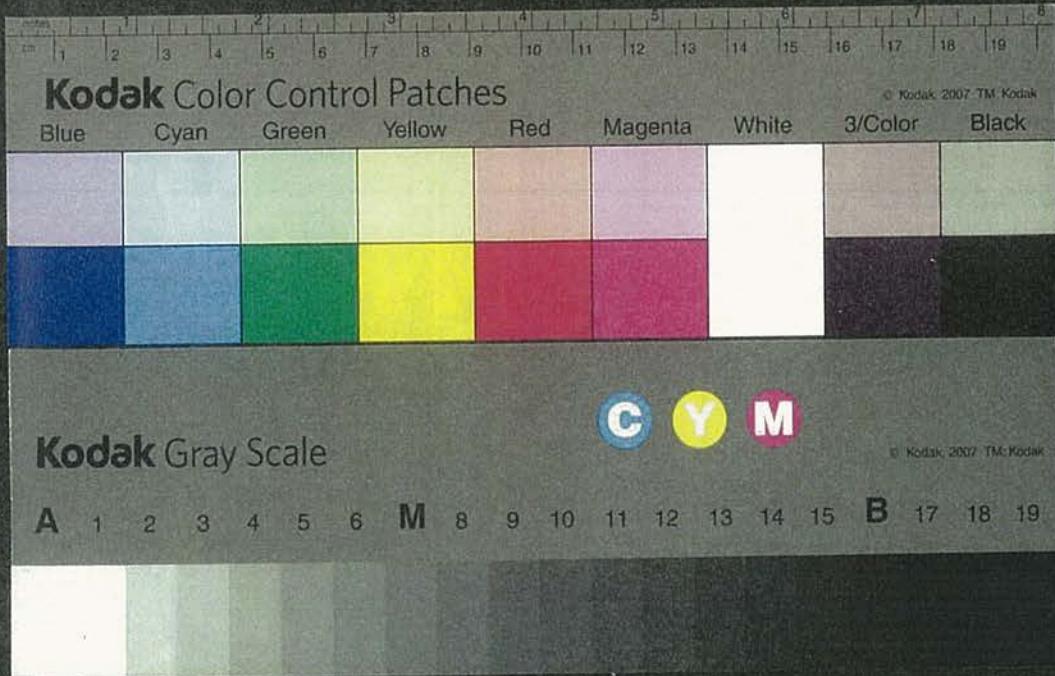


相互直通運転特集号



429

JAPAN TRAIN OPERATION ASSOCIATION



Explore Litigation Insights

Docket Alarm provides insights to develop a more informed litigation strategy and the peace of mind of knowing you're on top of things.

Real-Time Litigation Alerts



Keep your litigation team up-to-date with **real-time alerts** and advanced team management tools built for the enterprise, all while greatly reducing PACER spend.

Our comprehensive service means we can handle Federal, State, and Administrative courts across the country.

Advanced Docket Research



With over 230 million records, Docket Alarm's cloud-native docket research platform finds what other services can't. Coverage includes Federal, State, plus PTAB, TTAB, ITC and NLRB decisions, all in one place.

Identify arguments that have been successful in the past with full text, pinpoint searching. Link to case law cited within any court document via Fastcase.

Analytics At Your Fingertips



Learn what happened the last time a particular judge, opposing counsel or company faced cases similar to yours.

Advanced out-of-the-box PTAB and TTAB analytics are always at your fingertips.

API

Docket Alarm offers a powerful API (application programming interface) to developers that want to integrate case filings into their apps.

LAW FIRMS

Build custom dashboards for your attorneys and clients with live data direct from the court.

Automate many repetitive legal tasks like conflict checks, document management, and marketing.

FINANCIAL INSTITUTIONS

Litigation and bankruptcy checks for companies and debtors.

E-DISCOVERY AND LEGAL VENDORS

Sync your system to PACER to automate legal marketing.