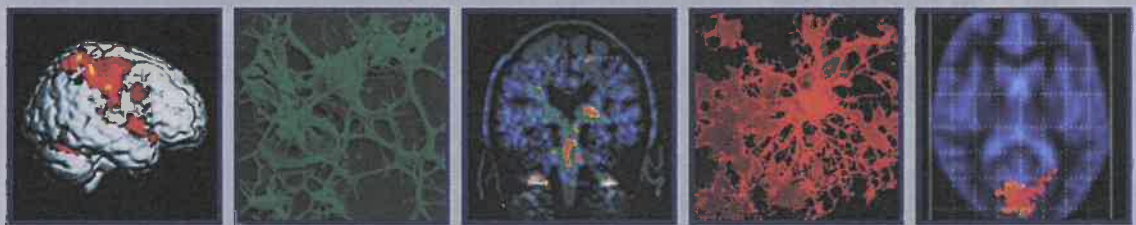


Fourth Edition

McAlpine's
MULTIPLE
SCLEROSIS



ALASTAIR COMPSTON

Christian Confavreux

Hans Lassmann

Ian McDonald

David Miller

John Noseworthy

Kenneth Smith

Hartmut Wekerle

CHURCHILL
LIVINGSTONE
ELSEVIER

DOCKET
ALARM

Find authenticated court documents without watermarks at docketalarm.com.

McAlpine's
MULTIPLE SCLEROSIS



Portrait by Howard Morgan. Reproduced by permission of Harveian Librarian, Royal College of Physicians of London.

Commissioning Editor: Susan Pioli
Project Development Manager: Louise Cook
Project Managers: Cheryl Brant (Elsevier), Gillian Whytock (Prepress Projects)
Editorial Assistant: Nani Clansey
Design Manager: Jayne Jones
Illustration Manager: Mick Ruddy
Illustrators: Antbits Illustration
Marketing Manager: Dana Butler

McAlpine's MULTIPLE SCLEROSIS

FOURTH EDITION

Alastair Compston PhD FRCP FMedSci
Professor of Neurology, University of Cambridge, Cambridge, UK

Christian Confavreux MD
Professor of Neurology, Hôpital Neurologique, Hospices Civils de Lyon and Université Claude Bernard, Lyon, France

Hans Lassmann MD
Professor of Neuroimmunology, Center for Brain Research, Medical University of Vienna, Vienna, Austria

Ian McDonald PhD FRCP FMedSci
Professor Emeritus of Clinical Neurology, Institute of Neurology, University College London, London, UK

David Miller MD FRCP FRACP
Professor of Clinical Neurology, Institute of Neurology, University College London, and Consultant Neurologist, National Hospital for Neurology and Neurosurgery, London, UK

John Noseworthy MD FRCPC
Professor and Chair, Department of Neurology, Mayo Clinic College of Medicine, Rochester, MN, USA

Kenneth Smith PhD
Professor of Neurophysiology and Head of Neuroinflammation Group, King's College London School of Medicine at Guy's, London, UK

Hartmut Wekerle MD
Professor and Director, Max Planck Institute of Neurobiology, Planegg-Martinsried, Germany



CHURCHILL
LIVINGSTONE
ELSEVIER

© 2006, Elsevier Inc. All rights reserved.

First published December 2005

First edition 1985

Second edition 1992

Third edition 1998

No part of this publication may be reproduced, stored in a retrieval system, or transmitted in any form or by any means, electronic, mechanical, photocopying, recording or otherwise, without the prior permission of the Publishers. Permissions may be sought directly from Elsevier's Health Sciences Rights Department, 1600 John F. Kennedy Boulevard, Suite 1800, Philadelphia, PA 19103, USA: tel: (+1) 215 239 3804; fax: (+1) 215 239 3805; or e-mail: healthpermissions@elsevier.com. You may also complete your request on-line via the Elsevier homepage (<http://www.elsevier.com>), by selecting 'Support and contact' and then 'Copyright and permission'.

ISBN 044307271X

EAN 9780443072710

British Library Cataloguing in Publication Data

A catalogue record for this book is available from the British Library

Library of Congress Cataloging in Publication Data

A catalog record for this book is available from the Library of Congress

Notice

Medical knowledge is constantly changing. Standard safety precautions must be followed but, as new research and clinical experience broaden our knowledge, changes in treatment and drug therapy may become necessary or appropriate. Readers are advised to check the most current product information provided by the manufacturer of each drug to be administered to verify the recommended dose, the method and duration of administration, and contraindications. It is the responsibility of the practitioner, relying on experience and knowledge of the patient, to determine dosages and the best treatment for each individual patient. Neither the Publisher nor the author assumes any liability for any injury and/or damage to persons or property arising from this publication.

The Publisher

Printed in China

Last digit is the print number: 9 8 7 6 5 4 3 2 1

Working together to grow
libraries in developing countries
www.elsevier.com | www.bookaid.org | www.sabre.org
ELSEVIER BOOK AID INTERNATIONAL Sabre Foundation

The
publisher's
policy is to use
paper manufactured
from sustainable forests

Explore Litigation Insights

Docket Alarm provides insights to develop a more informed litigation strategy and the peace of mind of knowing you're on top of things.

Real-Time Litigation Alerts



Keep your litigation team up-to-date with **real-time alerts** and advanced team management tools built for the enterprise, all while greatly reducing PACER spend.

Our comprehensive service means we can handle Federal, State, and Administrative courts across the country.

Advanced Docket Research



With over 230 million records, Docket Alarm's cloud-native docket research platform finds what other services can't. Coverage includes Federal, State, plus PTAB, TTAB, ITC and NLRB decisions, all in one place.

Identify arguments that have been successful in the past with full text, pinpoint searching. Link to case law cited within any court document via Fastcase.

Analytics At Your Fingertips



Learn what happened the last time a particular judge, opposing counsel or company faced cases similar to yours.

Advanced out-of-the-box PTAB and TTAB analytics are always at your fingertips.

API

Docket Alarm offers a powerful API (application programming interface) to developers that want to integrate case filings into their apps.

LAW FIRMS

Build custom dashboards for your attorneys and clients with live data direct from the court.

Automate many repetitive legal tasks like conflict checks, document management, and marketing.

FINANCIAL INSTITUTIONS

Litigation and bankruptcy checks for companies and debtors.

E-DISCOVERY AND LEGAL VENDORS

Sync your system to PACER to automate legal marketing.