



US005684607A

# United States Patent [19]

[11] Patent Number: **5,684,607**

Matsumoto

[45] Date of Patent: **Nov. 4, 1997**

[54] **FACSIMILE APPARATUS USING A SMALL COMPUTER SYSTEM INTERFACE**

4,907,094	3/1990	Mishima et al.	358/437
5,010,581	4/1991	Kanno	382/56
5,021,892	6/1991	Kita et al.	358/468
5,163,088	11/1992	LoCascio	358/442
5,196,943	3/1993	Hersee et al.	379/100
5,270,833	12/1993	Kubokawa et al.	379/100

[75] Inventor: **Naoyuki Matsumoto, Yokohama, Japan**

[73] Assignee: **Canon Kabushiki Kaisha, Tokyo, Japan**

[21] Appl. No.: **337,234**

3306520	9/1983	Germany .
2166620	5/1986	United Kingdom .

[22] Filed: **Nov. 4, 1994**

### FOREIGN PATENT DOCUMENTS

### Related U.S. Application Data

[63] Continuation of Ser. No. 889,199, May 28, 1992, abandoned.

*Primary Examiner*—John K. Peng  
*Assistant Examiner*—John W. Miller  
*Attorney, Agent, or Firm*—Fitzpatrick, Cella, Harper & Scinto

### Foreign Application Priority Data

Jun. 5, 1991 [JP] Japan ..... 3-134076

[51] Int. Cl.<sup>6</sup> ..... **H04N 1/32; H04N 1/40**

[52] U.S. Cl. .... **358/442; 358/403; 358/404; 358/444; 358/468**

[58] Field of Search ..... 358/403-405, 358/434-436, 441, 442, 444, 468, 448, 500, 527, 400, 443; 379/100 R; H04N 1/42, 1/21, 1/00, 1/40, 1/32

### [57] ABSTRACT

A facsimile apparatus having a scanner for reading original images, a memory for storing images, a printer for recording images, and a communication control section for controlling the transmission/reception of data with a receiving communication apparatus is connected to a host computer via a small computer system interface (SCSI). As a result, the scanner, the memory, the printer and the communication control apparatus provided in the facsimile apparatus can be controlled from the host computer. Data can be transferred between the host computer and the facsimile apparatus at a higher speed, and the scanner, the memory, the printer and the communication control apparatus can be effectively controlled from the host computer. Thus, various kinds of applications can be realized.

### [56] References Cited

#### U.S. PATENT DOCUMENTS

3,920,896	11/1975	Bishop et al.	178/26 R
4,652,933	3/1987	Kashiishi	358/256
4,786,974	11/1988	Ina	358/257

**68 Claims, 29 Drawing Sheets**

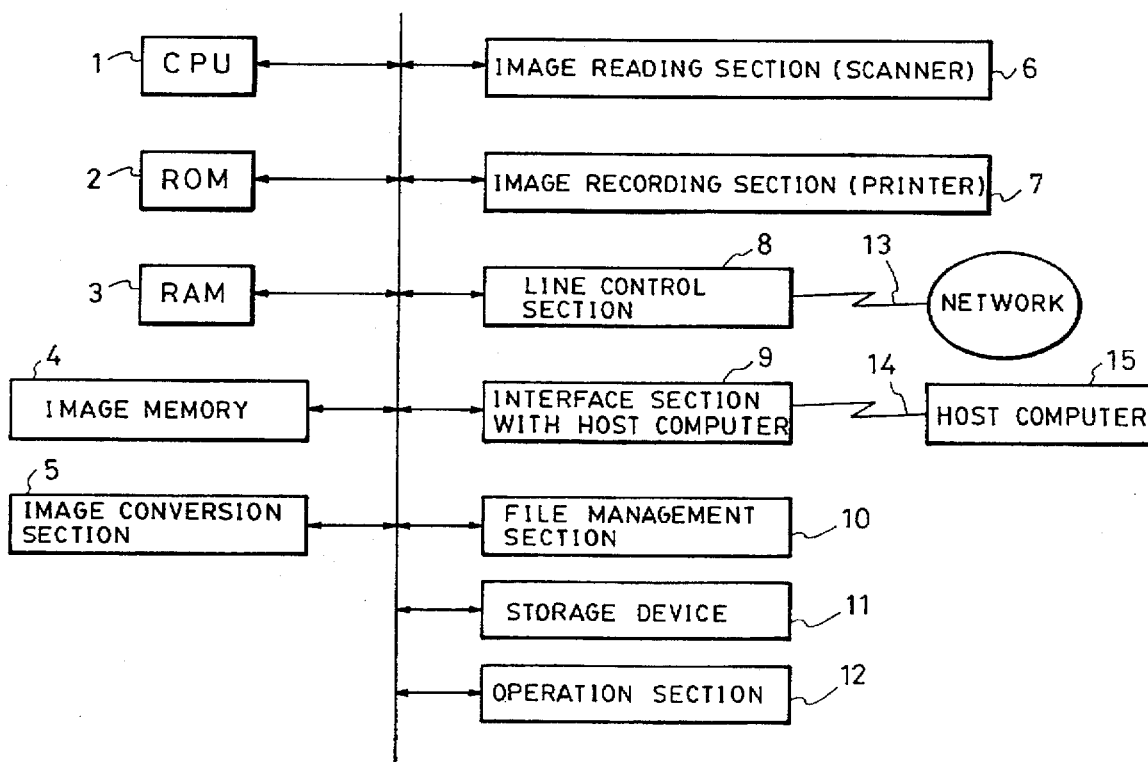


FIG. 1

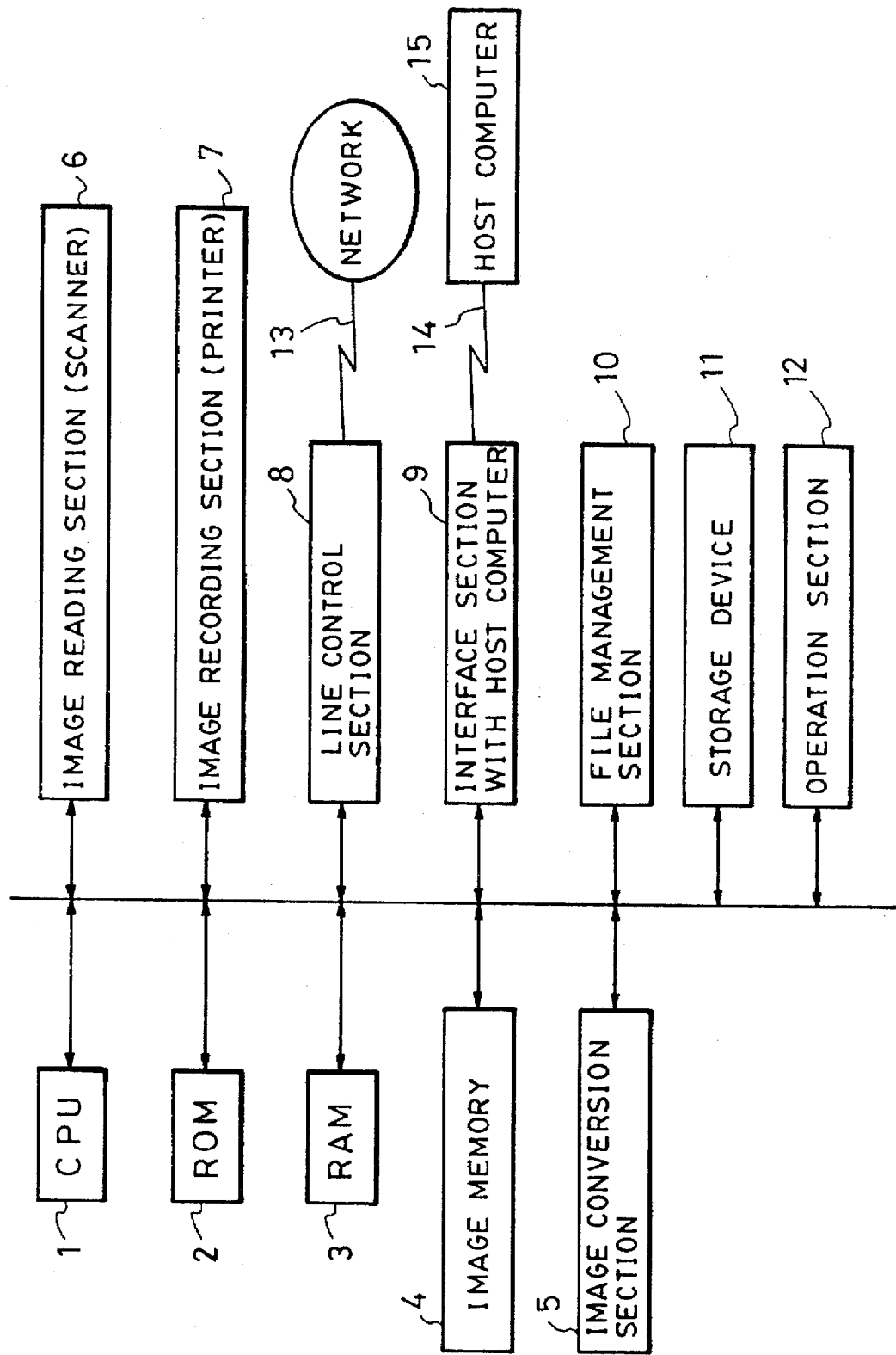


FIG. 2

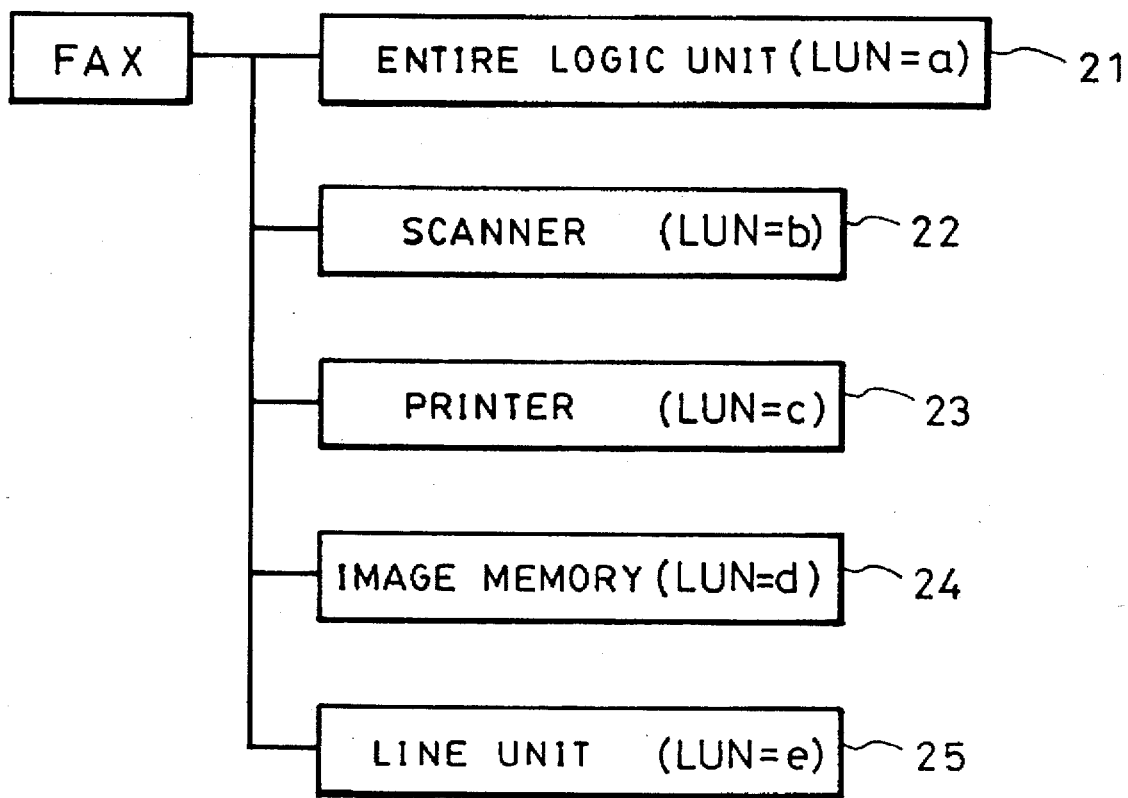


FIG. 3

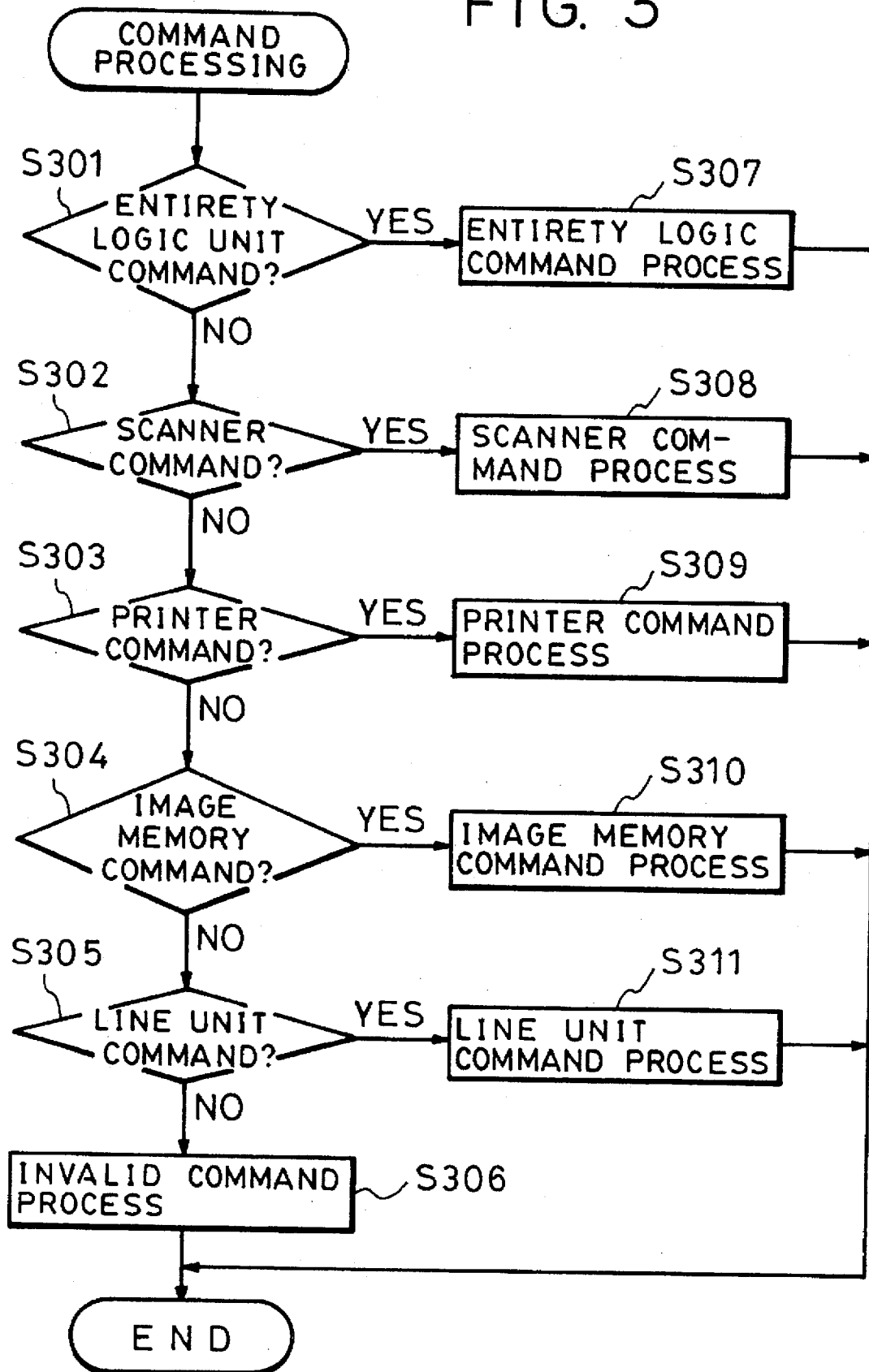
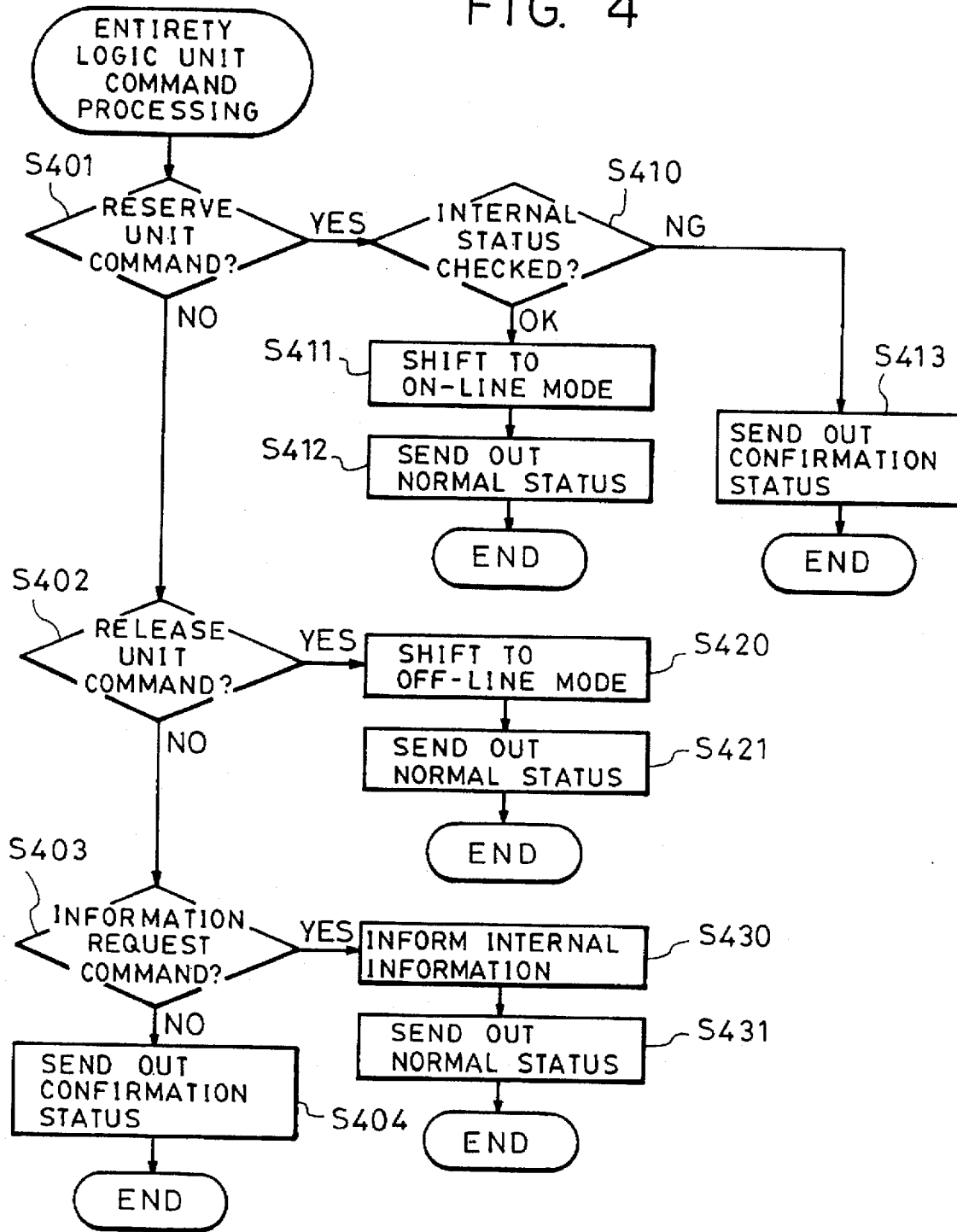


FIG. 4



# Explore Litigation Insights

Docket Alarm provides insights to develop a more informed litigation strategy and the peace of mind of knowing you're on top of things.

## Real-Time Litigation Alerts



Keep your litigation team up-to-date with **real-time alerts** and advanced team management tools built for the enterprise, all while greatly reducing PACER spend.

Our comprehensive service means we can handle Federal, State, and Administrative courts across the country.

## Advanced Docket Research



With over 230 million records, Docket Alarm's cloud-native docket research platform finds what other services can't. Coverage includes Federal, State, plus PTAB, TTAB, ITC and NLRB decisions, all in one place.

Identify arguments that have been successful in the past with full text, pinpoint searching. Link to case law cited within any court document via Fastcase.

## Analytics At Your Fingertips



Learn what happened the last time a particular judge, opposing counsel or company faced cases similar to yours.

Advanced out-of-the-box PTAB and TTAB analytics are always at your fingertips.

## API

Docket Alarm offers a powerful API (application programming interface) to developers that want to integrate case filings into their apps.

## LAW FIRMS

Build custom dashboards for your attorneys and clients with live data direct from the court.

Automate many repetitive legal tasks like conflict checks, document management, and marketing.

## FINANCIAL INSTITUTIONS

Litigation and bankruptcy checks for companies and debtors.

## E-DISCOVERY AND LEGAL VENDORS

Sync your system to PACER to automate legal marketing.