



US005369289A

United States Patent [19]

[11] Patent Number: **5,369,289**

Tamaki et al.

[45] Date of Patent: **Nov. 29, 1994**

[54] **GALLIUM NITRIDE-BASED COMPOUND SEMICONDUCTOR LIGHT-EMITTING DEVICE AND METHOD FOR MAKING THE SAME**

4,495,514	1/1985	Lawrence et al.	257/99
4,855,249	8/1989	Akasaki et al.	257/103
4,911,102	3/1990	Manabe et al.	257/103
4,946,548	8/1990	Kotaki et al.	257/103
5,122,845	6/1992	Manabe et al.	257/94

[75] Inventors: **Makoto Tamaki, Inazawa; Takahiro Kozawa, Owariasahi, both of Japan**

Primary Examiner—Jerome Jackson
Attorney, Agent, or Firm—Cushman, Darby & Cushman

[73] Assignees: **Toyoda Gosei Co. Ltd., Nishikasugai; Kabushiki Kaisha Toyota Chuo Kenkyusho, Aichi, both of Japan**

[57] ABSTRACT

[21] Appl. No.: **969,769**

A light-emitting device comprises an n-type layer made of an n-type gallium nitride-based compound of the formula $Al_xGa_{1-x}N$, wherein $0 \leq x < 1$, and an i-type layer formed on the n-type layer and made of a semi-insulating i-type gallium nitride-based compound semiconductor and doped with a p-type impurity for junction with the n-type layer. A first electrode is formed on the surface of the i-type layer and made of a transparent conductive film and a second electrode is formed to connect to the n-type layer through the i-type layer. The device is so arranged that light is emitted from the side of the i-type layer to the outside. When an electric current is supplied to the first electrode from a wire contacted thereto, the first electrode is held entirely at a uniform potential. Light is emitted from the entire interface beneath the first electrode and can thus be picked up from the first electrode which is optically transparent.

[22] Filed: **Oct. 30, 1992**

[30] Foreign Application Priority Data

Oct. 30, 1991 [JP] Japan 3-313977

[51] Int. Cl.⁵ **H01L 29/205; H01L 33/00**

[52] U.S. Cl. **257/99; 257/94; 257/103; 257/749; 257/766**

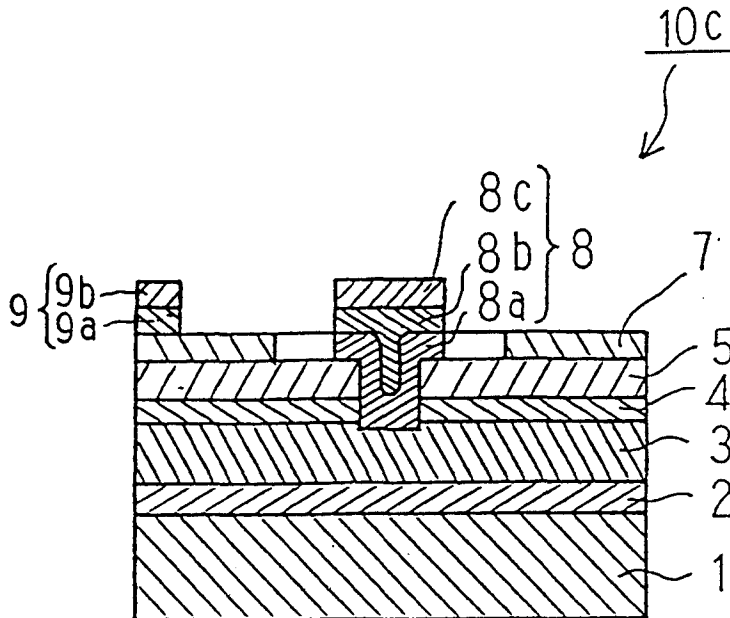
[58] Field of Search 257/94, 101, 99, 102, 257/103, 749, 766

[56] References Cited

U.S. PATENT DOCUMENTS

3,409,809	11/1968	Diehl	257/766
3,790,868	2/1974	Soshea	257/101
3,849,707	11/1974	Braslau	257/48
4,283,118	8/1981	Inoue	257/766
4,316,208	2/1982	Kobayashi et al.	257/99
4,408,217	10/1983	Kobayashi et al.	257/103

18 Claims, 9 Drawing Sheets



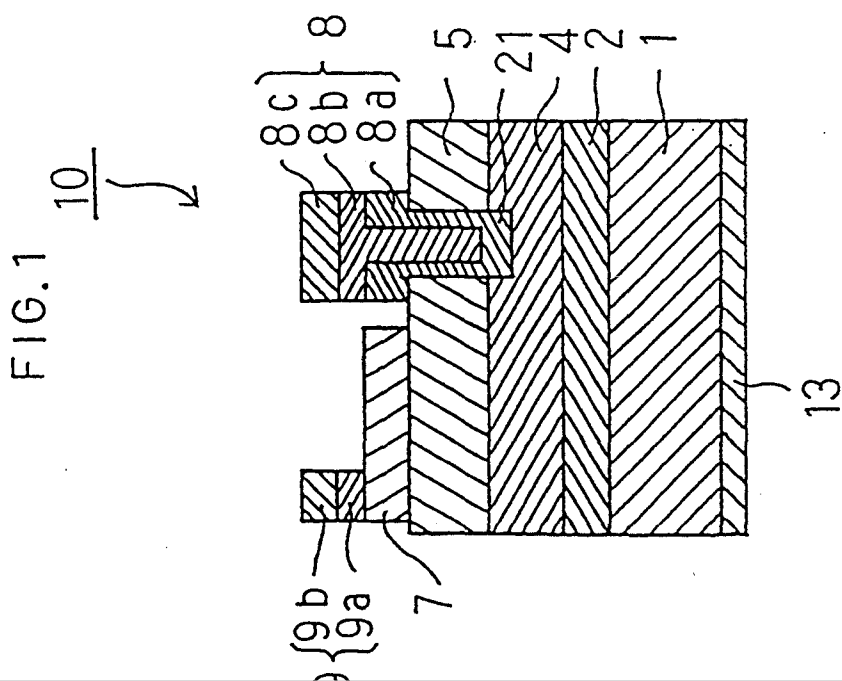
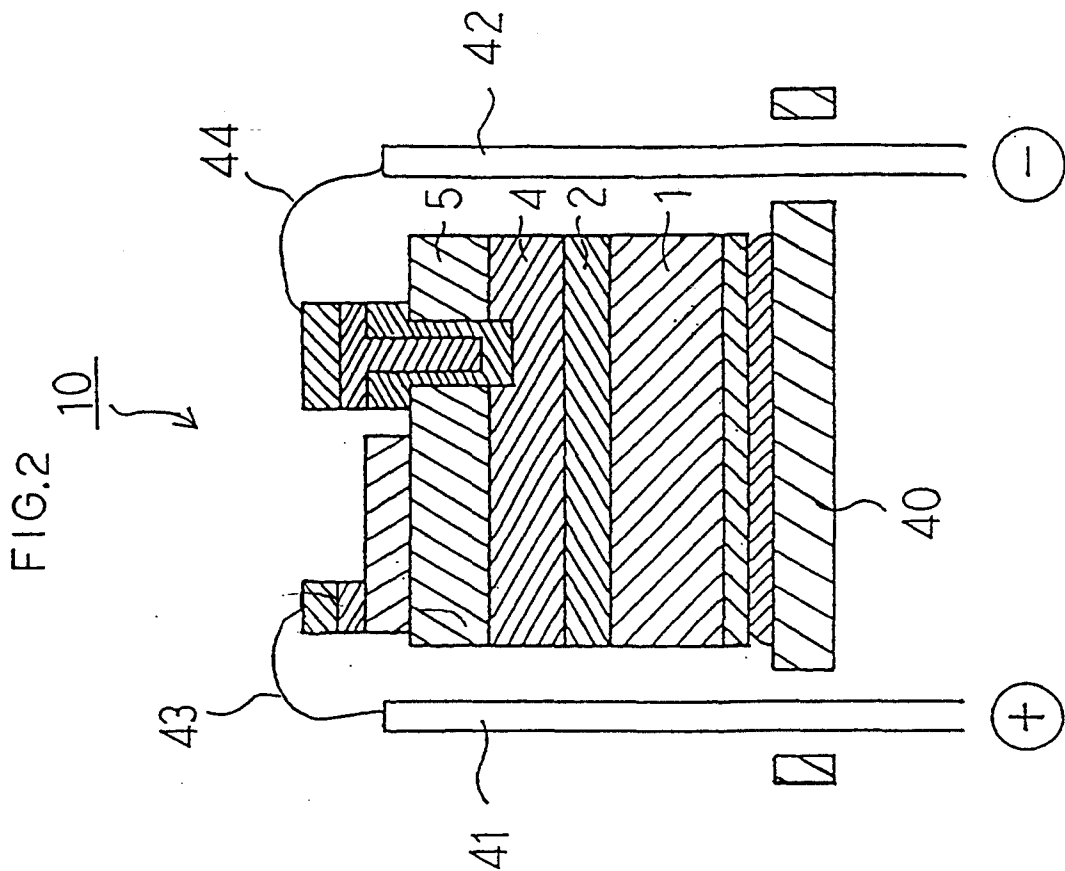


FIG. 4

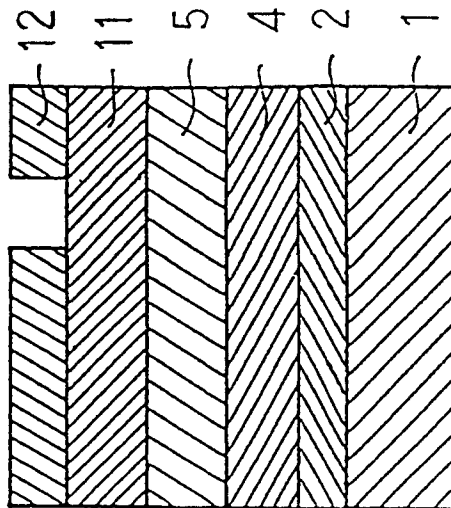


FIG. 3

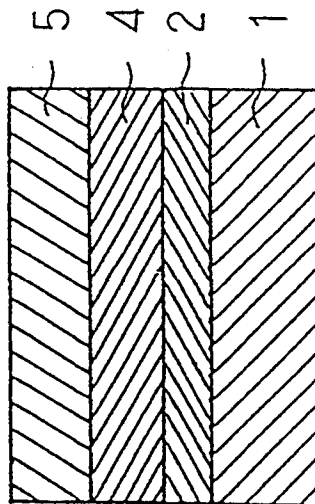


FIG. 6

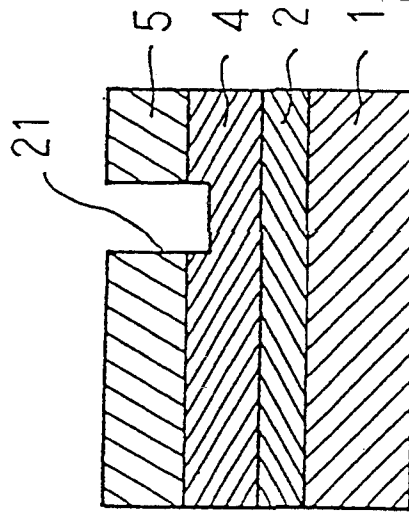


FIG. 5

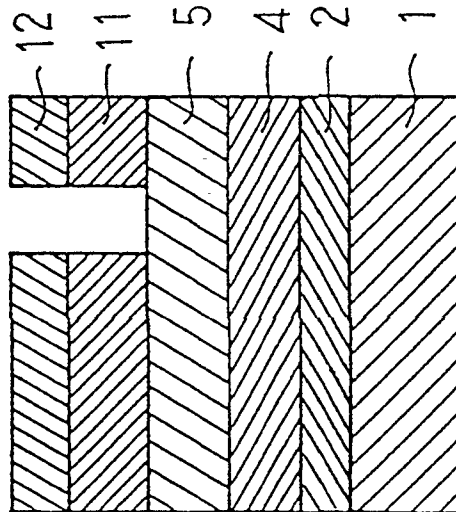


FIG. 9

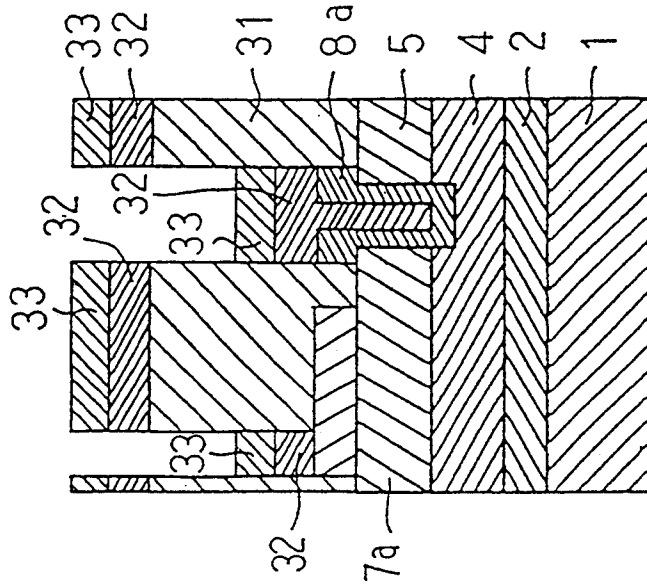


FIG. 7

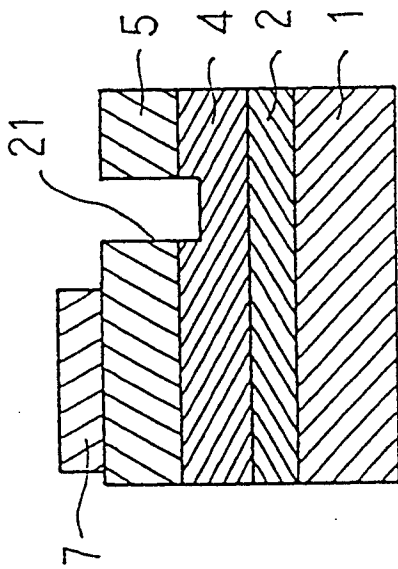
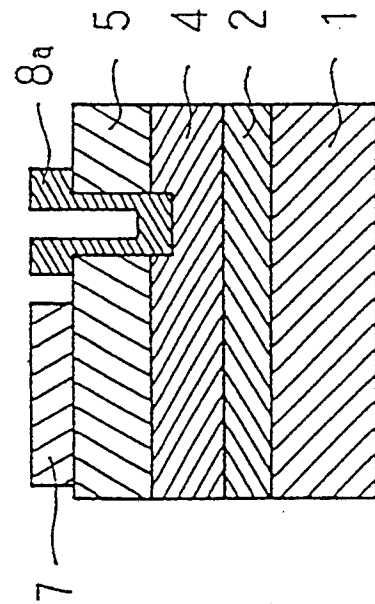


FIG. 8



Explore Litigation Insights

Docket Alarm provides insights to develop a more informed litigation strategy and the peace of mind of knowing you're on top of things.

Real-Time Litigation Alerts



Keep your litigation team up-to-date with **real-time alerts** and advanced team management tools built for the enterprise, all while greatly reducing PACER spend.

Our comprehensive service means we can handle Federal, State, and Administrative courts across the country.

Advanced Docket Research



With over 230 million records, Docket Alarm's cloud-native docket research platform finds what other services can't. Coverage includes Federal, State, plus PTAB, TTAB, ITC and NLRB decisions, all in one place.

Identify arguments that have been successful in the past with full text, pinpoint searching. Link to case law cited within any court document via Fastcase.

Analytics At Your Fingertips



Learn what happened the last time a particular judge, opposing counsel or company faced cases similar to yours.

Advanced out-of-the-box PTAB and TTAB analytics are always at your fingertips.

API

Docket Alarm offers a powerful API (application programming interface) to developers that want to integrate case filings into their apps.

LAW FIRMS

Build custom dashboards for your attorneys and clients with live data direct from the court.

Automate many repetitive legal tasks like conflict checks, document management, and marketing.

FINANCIAL INSTITUTIONS

Litigation and bankruptcy checks for companies and debtors.

E-DISCOVERY AND LEGAL VENDORS

Sync your system to PACER to automate legal marketing.