

- [54] **SELECTIVE PAGING RECEIVER WITH MESSAGE DISPLAY**
- [75] **Inventors:** Masahiro Matai; Toshihiro Mori, both of Tokyo, Japan
- [73] **Assignee:** NEC Corporation, Japan
- [21] **Appl. No.:** 906,148
- [22] **Filed:** Sep. 11, 1986
- [30] **Foreign Application Priority Data**
 Sep. 17, 1985 [JP] Japan 60-204912
- [51] **Int. Cl.⁴** H04Q 7/00; G05B 5/22
- [52] **U.S. Cl.** 340/825.44; 340/311.1; 455/38
- [58] **Field of Search** 340/825.44, 825.47, 340/825.48, 311.1, 286, 792, 799; 455/31, 38; 379/56, 57

- 4,385,295 5/1983 Willard et al. 340/825.44
- 4,504,825 3/1985 Bergermann et al. 340/709
- 4,618,860 10/1986 Mori 340/825.48

FOREIGN PATENT DOCUMENTS

- 0136677 4/1985 European Pat. Off. 340/825.44

Primary Examiner—John W. Caldwell, Sr.
Assistant Examiner—Edwin C. Holloway, III
Attorney, Agent, or Firm—Laff, Whitesel, Conte & Saret

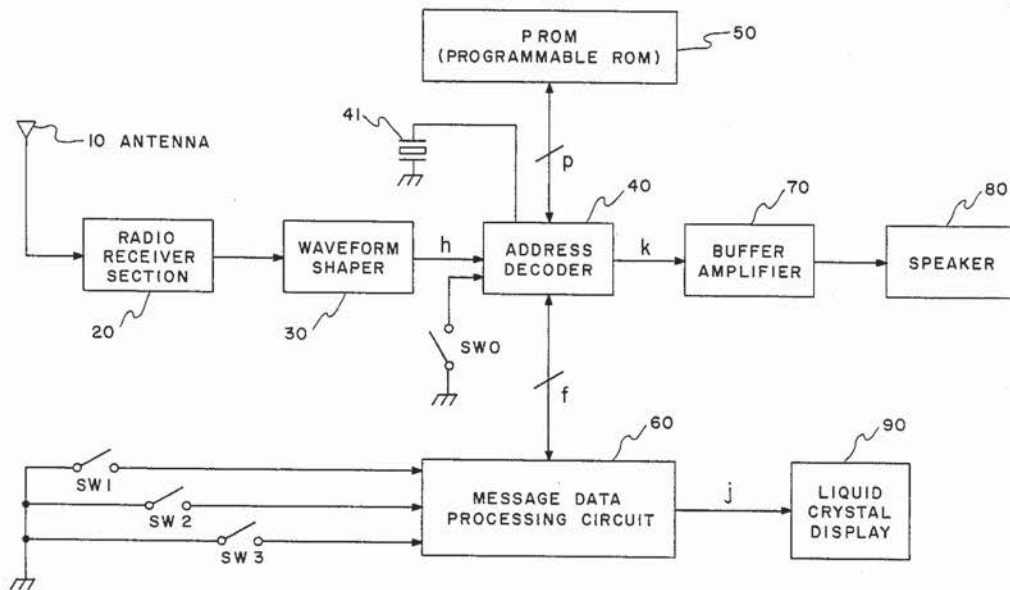
[57] **ABSTRACT**

A pager has a receiver for receiving selective paging numbers and message data and a message display panel for displaying paging messages to the user. The pager has a first memory for storing message data. Control data, arriving together with the message data and related to its display, is stored in a second memory. A display controller, responsive to external operating inputs from the user, is provided for controlling the contents of the messages to be displayed on a basis of the control data. A display responds to control from the display controller, to read out and display messages stored in the first memory.

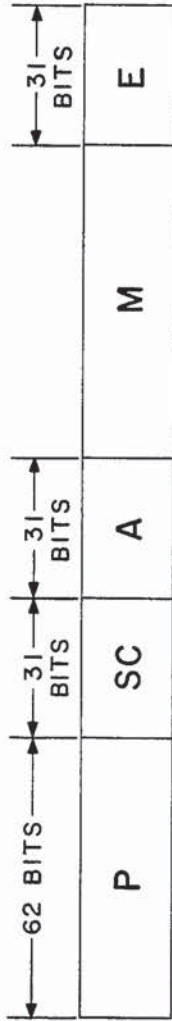
[56] **References Cited**
U.S. PATENT DOCUMENTS

- 3,757,037 9/1973 Bialek 340/712
- 3,976,995 8/1976 Sebestyen 340/792
- 4,336,524 6/1982 Levine 340/825.44
- 4,382,256 5/1983 Nagata 340/825.44

12 Claims, 13 Drawing Sheets

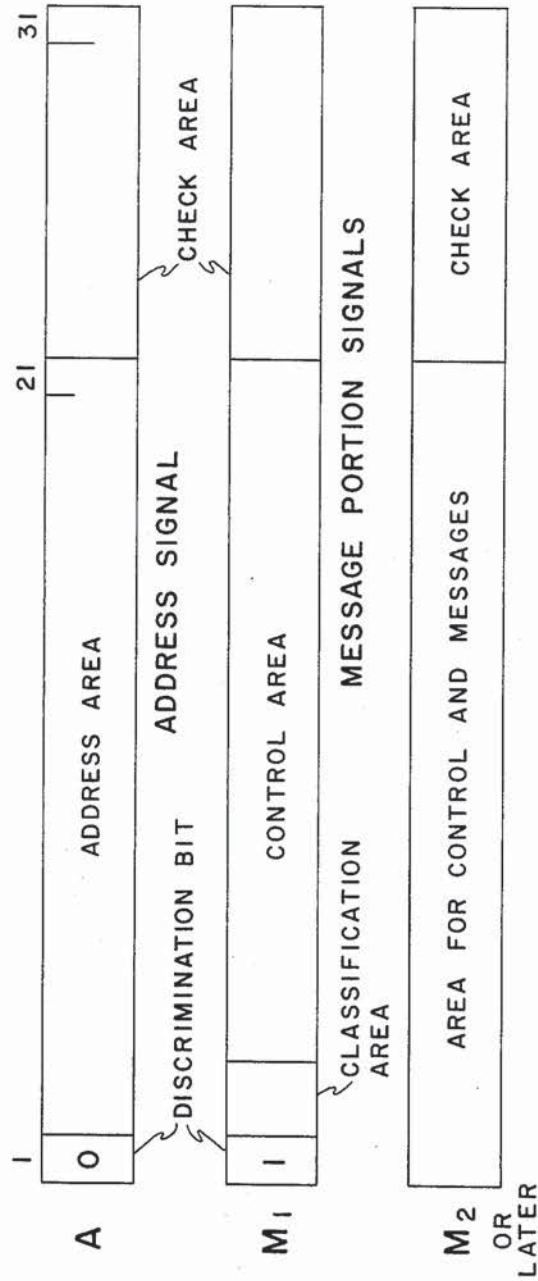


BLOCK DIAGRAM OF SELECTIVE PAGING RECEIVER WITH MESSAGE DISPLAY



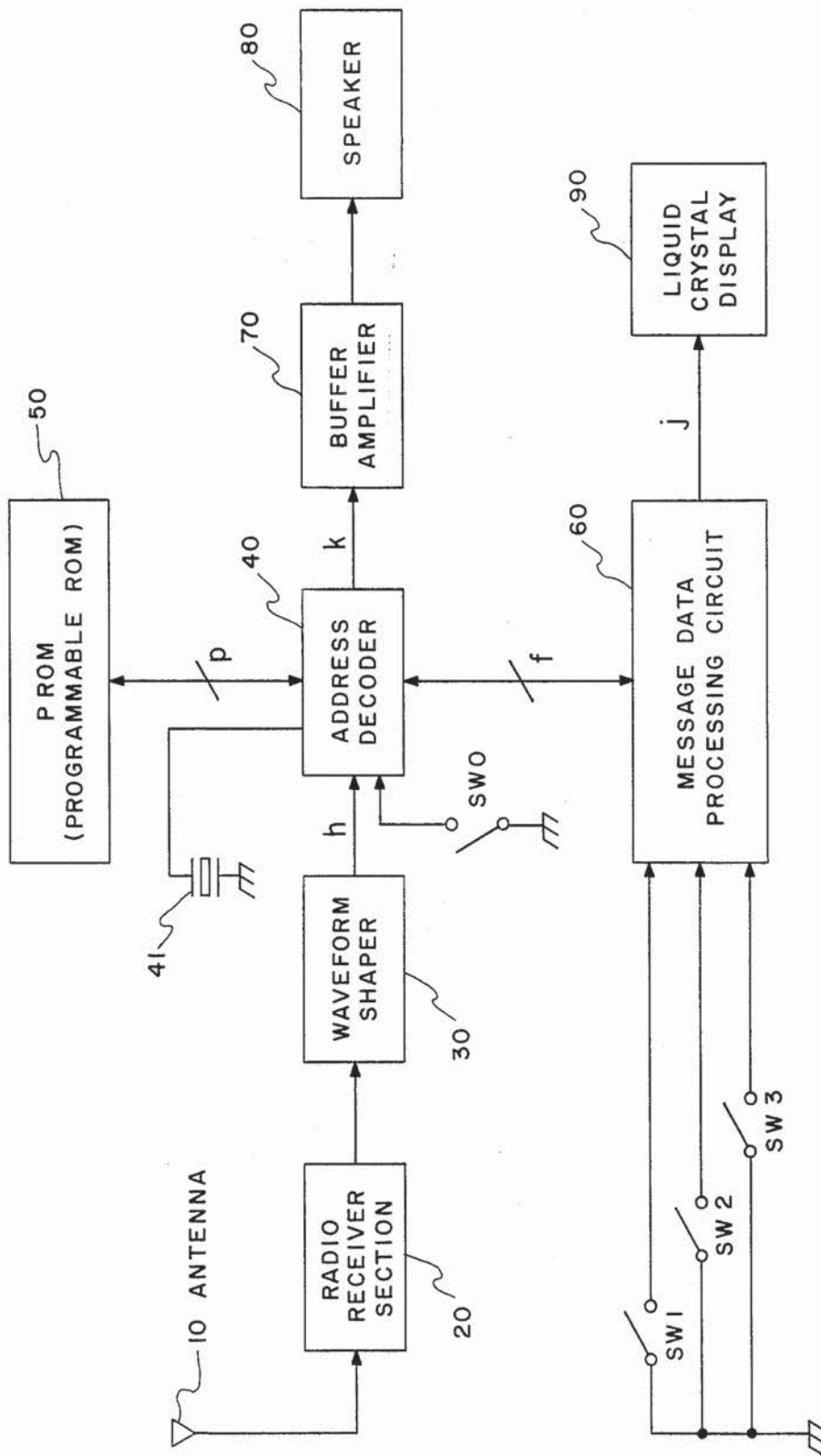
RECEIVED PAGING SIGNAL

FIG. 1(a)



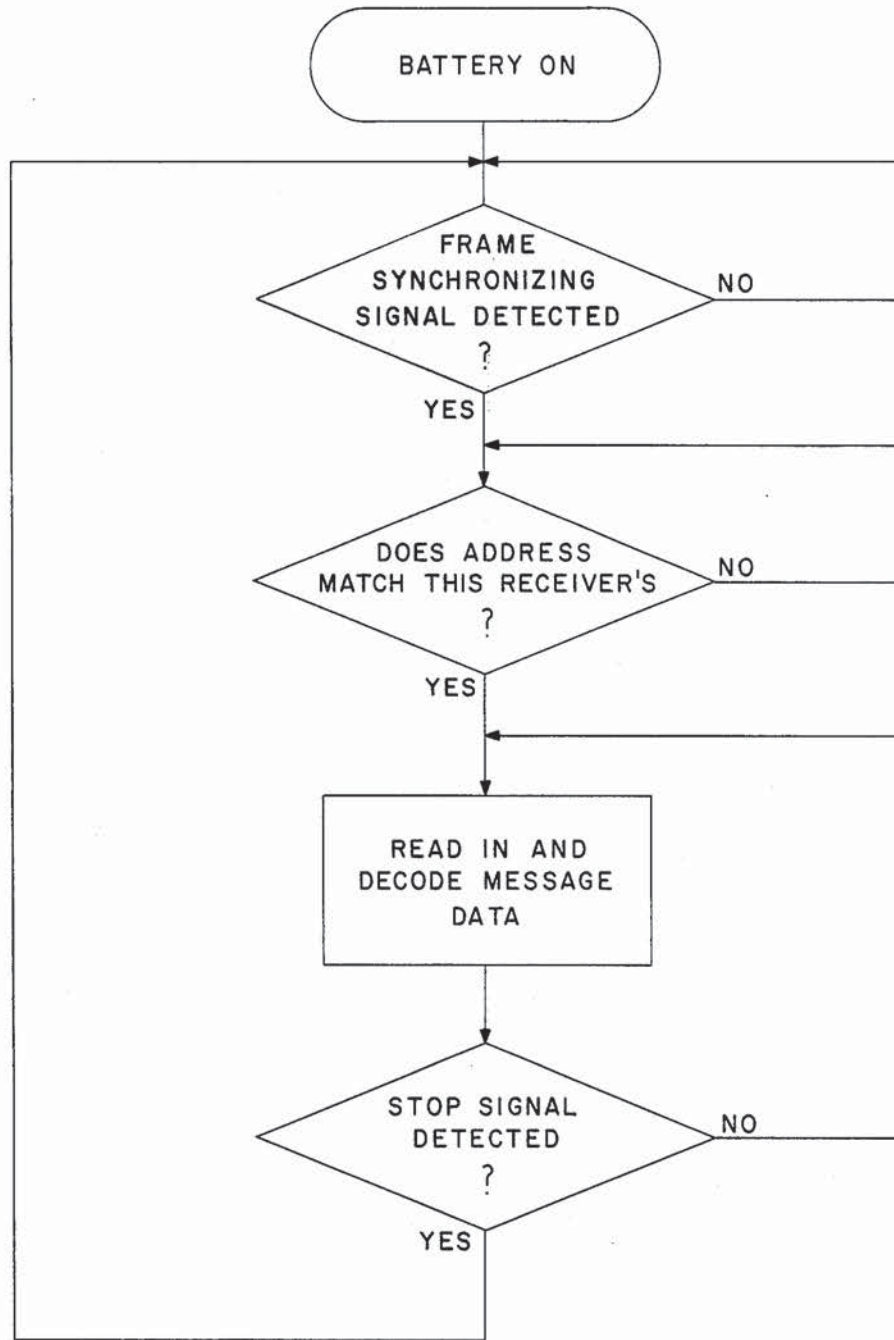
ADDRESS AND MESSAGE PORTION SIGNALS

FIG. 1(b)



BLOCK DIAGRAM OF SELECTIVE PAGING RECEIVER WITH MESSAGE DISPLAY

FIG. 2



FLOW CHART OF DECODER OPERATION

FIG. 3

FIG. 4(a) CLASSIFICATION AREA I

- 00 CONTROL AREA CONTINUES TO NEXT M_n
- 01 PARTIAL DISPLAY
- 10 KEY WORD DISPLAY
- 11 ABBREVIATED DISPLAY

FIG. 4(b) CONTROL AREA

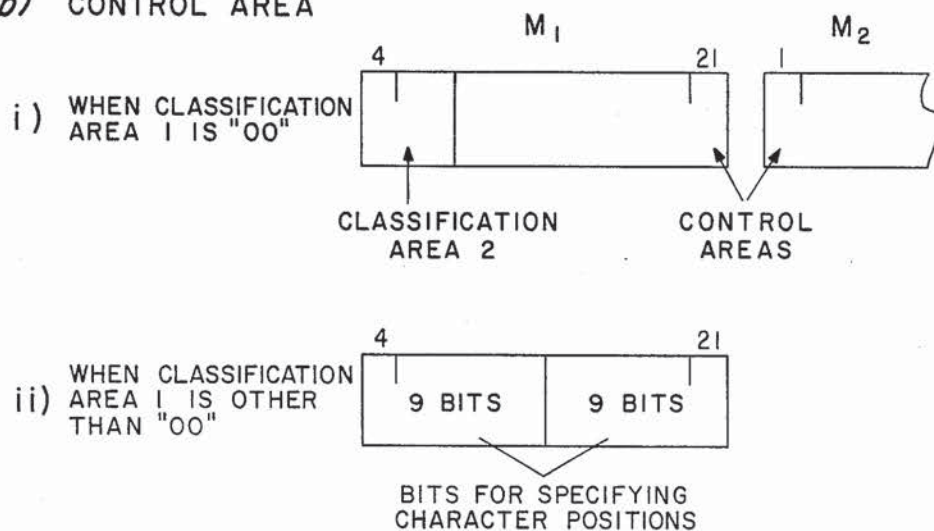
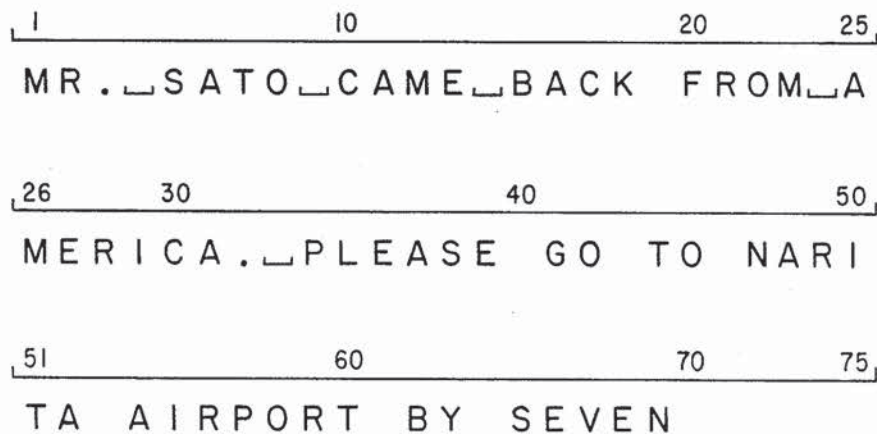


FIG. 4(c) MESSAGE INFORMATION (SAMPLE MESSAGE)



Explore Litigation Insights

Docket Alarm provides insights to develop a more informed litigation strategy and the peace of mind of knowing you're on top of things.

Real-Time Litigation Alerts



Keep your litigation team up-to-date with **real-time alerts** and advanced team management tools built for the enterprise, all while greatly reducing PACER spend.

Our comprehensive service means we can handle Federal, State, and Administrative courts across the country.

Advanced Docket Research



With over 230 million records, Docket Alarm's cloud-native docket research platform finds what other services can't. Coverage includes Federal, State, plus PTAB, TTAB, ITC and NLRB decisions, all in one place.

Identify arguments that have been successful in the past with full text, pinpoint searching. Link to case law cited within any court document via Fastcase.

Analytics At Your Fingertips



Learn what happened the last time a particular judge, opposing counsel or company faced cases similar to yours.

Advanced out-of-the-box PTAB and TTAB analytics are always at your fingertips.

API

Docket Alarm offers a powerful API (application programming interface) to developers that want to integrate case filings into their apps.

LAW FIRMS

Build custom dashboards for your attorneys and clients with live data direct from the court.

Automate many repetitive legal tasks like conflict checks, document management, and marketing.

FINANCIAL INSTITUTIONS

Litigation and bankruptcy checks for companies and debtors.

E-DISCOVERY AND LEGAL VENDORS

Sync your system to PACER to automate legal marketing.