



US005970122A

# United States Patent [19]

[11] Patent Number: **5,970,122**

LaPorta et al.

[45] Date of Patent: **\*Oct. 19, 1999**

## [54] TWO-WAY WIRELESS MESSAGING SYSTEM HAVING USER AGENT

[75] Inventors: **Thomas F. LaPorta**, Thornwood, N.Y.; **Krishan Kumar Sabnani**, Westfield; **Thomas Yat Chung Woo**, Red Bank, both of N.J.

[73] Assignee: **Lucent Technologies Inc.**, Murray Hill, N.J.

[\*] Notice: This patent issued on a continued prosecution application filed under 37 CFR 1.53(d), and is subject to the twenty year patent term provisions of 35 U.S.C. 154(a)(2).

5,159,592	10/1992	Perkins	370/85.7
5,283,818	2/1994	Klausner et al.	379/67
5,327,486	7/1994	Wolff et al.	379/96
5,363,425	11/1994	Mufti et al.	379/38
5,400,393	3/1995	Knuth et al.	379/88
5,483,577	1/1996	Gulick	379/67
5,493,692	2/1996	Theimer et al.	455/26.1
5,533,019	7/1996	Jayapalan	370/60.1
5,608,786	3/1997	Gordon	379/100
5,680,437	10/1997	Segal	379/10
5,742,905	4/1998	Pepe et al.	455/461
5,752,191	5/1998	Fuller et al.	455/445
5,845,213	12/1998	Sumner et al.	455/458

Primary Examiner—Fan S. Tsang  
Assistant Examiner—Allan Hoosain

### [57] ABSTRACT

A two-way wireless messaging system includes a messaging network having at least one user agent corresponding to a subscriber of a two-way wireless messaging service. The subscriber receives messages from the messaging network along a first communication channel. The user agent includes a plurality of messages stored therein wherein a predetermined message is stored in the user agent and forwarded to a desired destination in response to an originating message code that is received from a two-way messaging device of the subscriber along a second communication return channel. The originating message code can be expanded by the user agent. The messages stored by the user agent can be modified so that different messages can be forwarded to the predetermined destination. The user agent also maintains location information of the two-way messaging device of the subscriber.

[21] Appl. No.: **08/686,080**

[22] Filed: **Jul. 24, 1996**

[51] Int. Cl.<sup>6</sup> ..... **H04M 1/64; H04M 1/60; H04M 3/42; H04Q 7/00**

[52] U.S. Cl. .... **379/67.1; 379/76; 379/88.08; 379/88.22; 379/170; 379/173; 379/185; 379/201; 379/217; 455/31.1; 455/31.2; 455/31.3**

[58] Field of Search ..... **379/67, 88, 89, 379/67.1, 76, 88.04, 88.08, 88.22, 93.29, 93.34, 170, 173, 185, 201, 217; 455/31.1, 31.2, 31.3; 382/50, 251**

### [56] References Cited

#### U.S. PATENT DOCUMENTS

4,757,525 7/1988 Matthews et al. .... 379/89

**40 Claims, 8 Drawing Sheets**

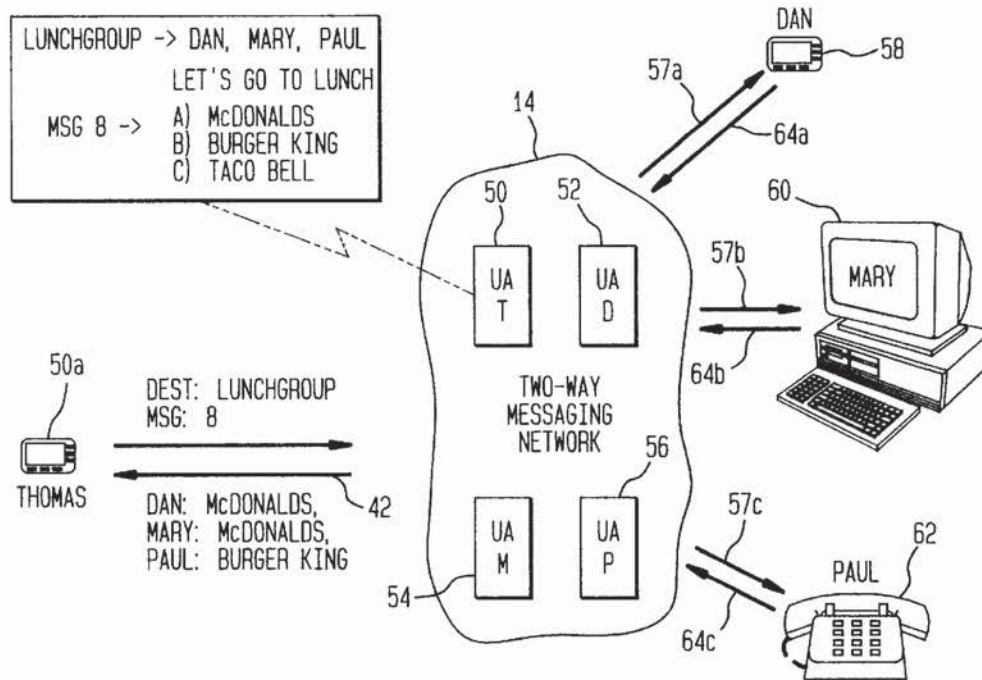


FIG. 1

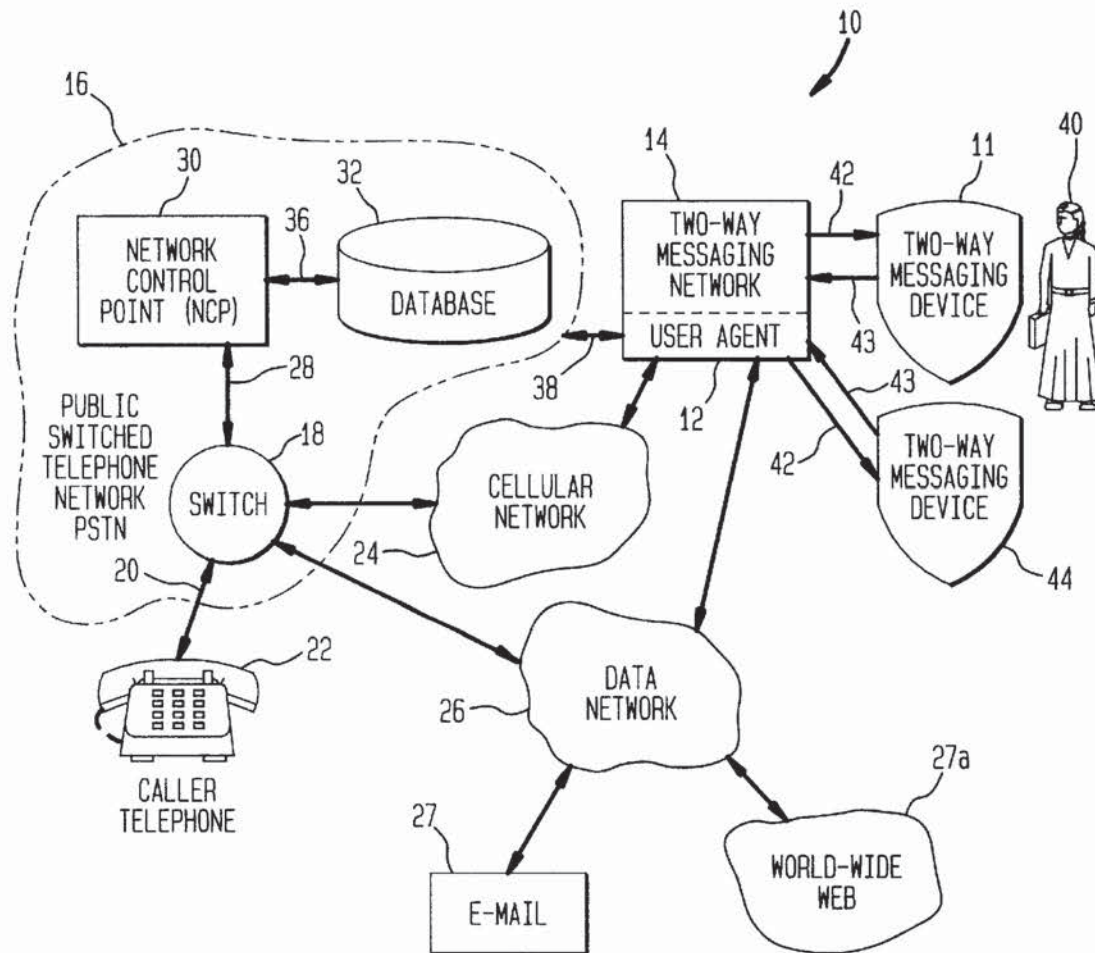


FIG. 2

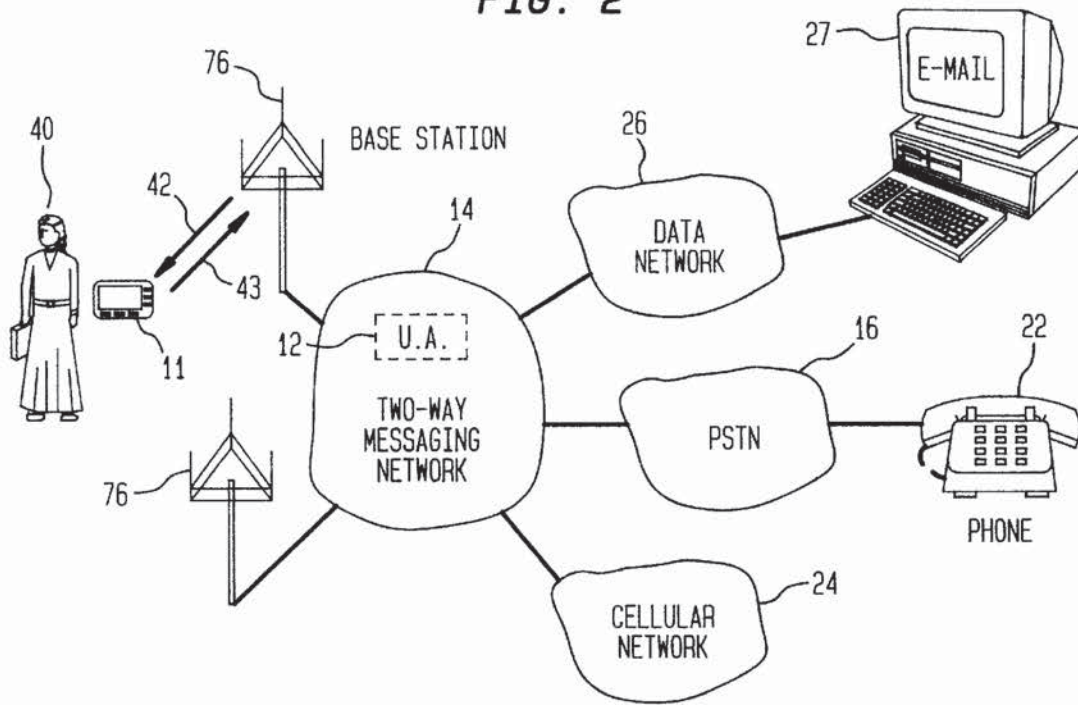


FIG. 3

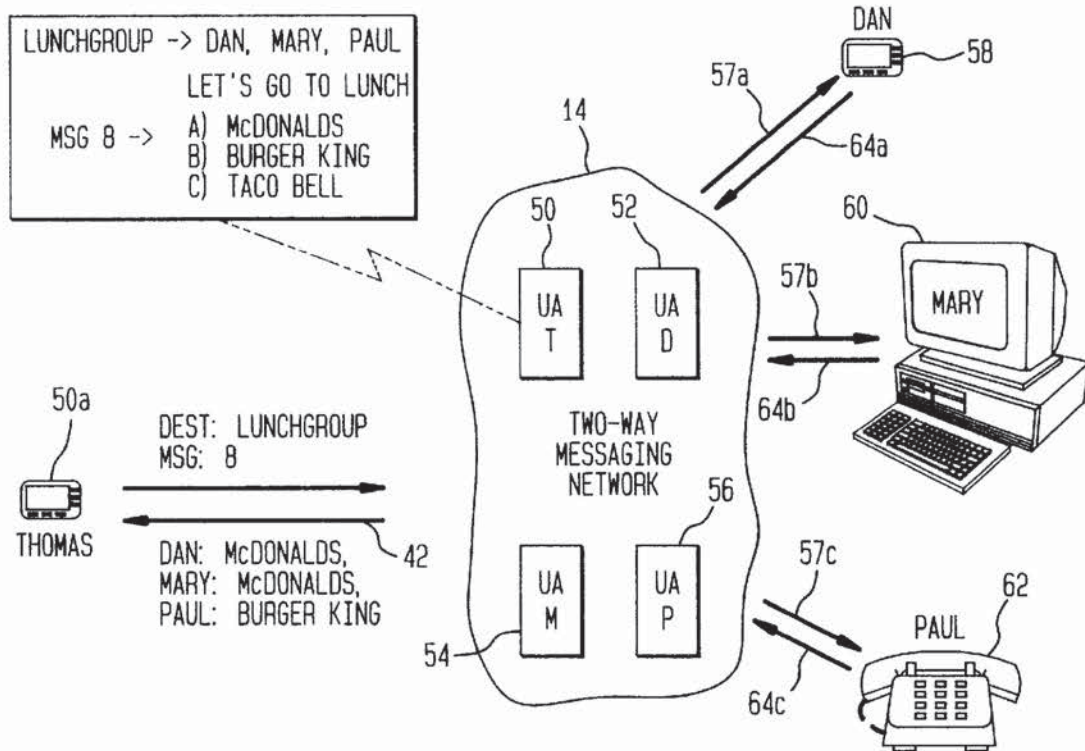




FIG. 4

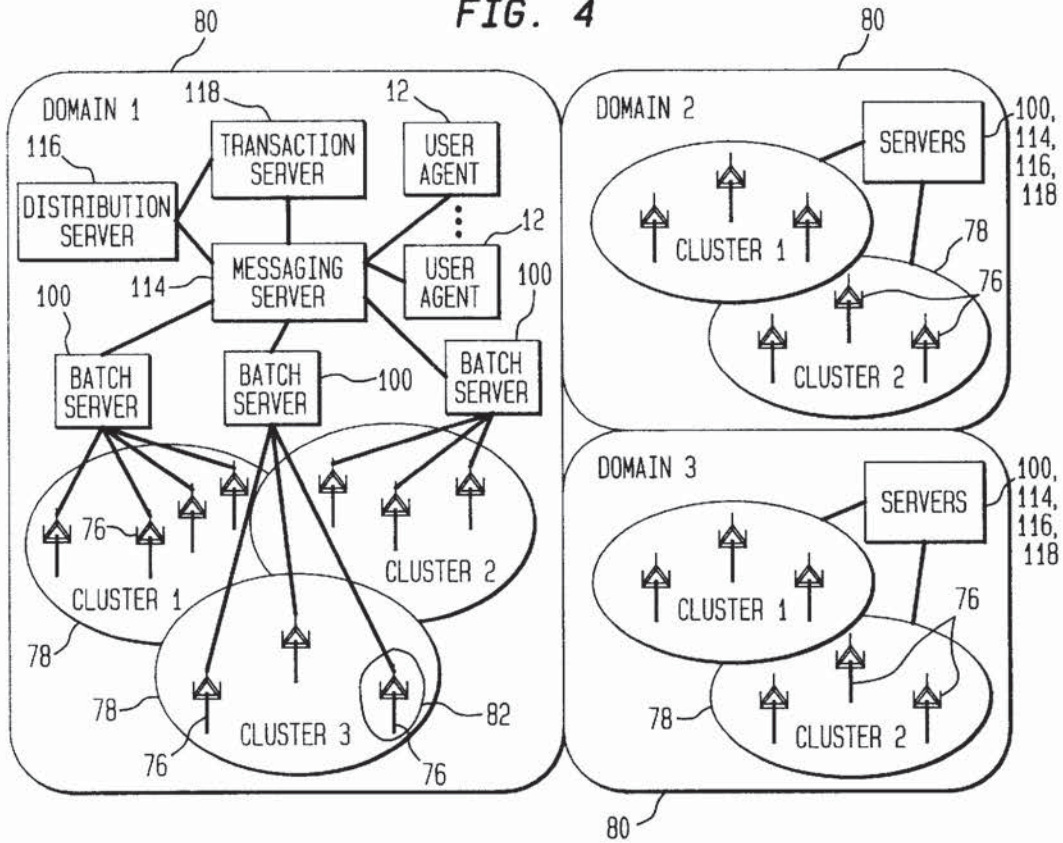


FIG. 5

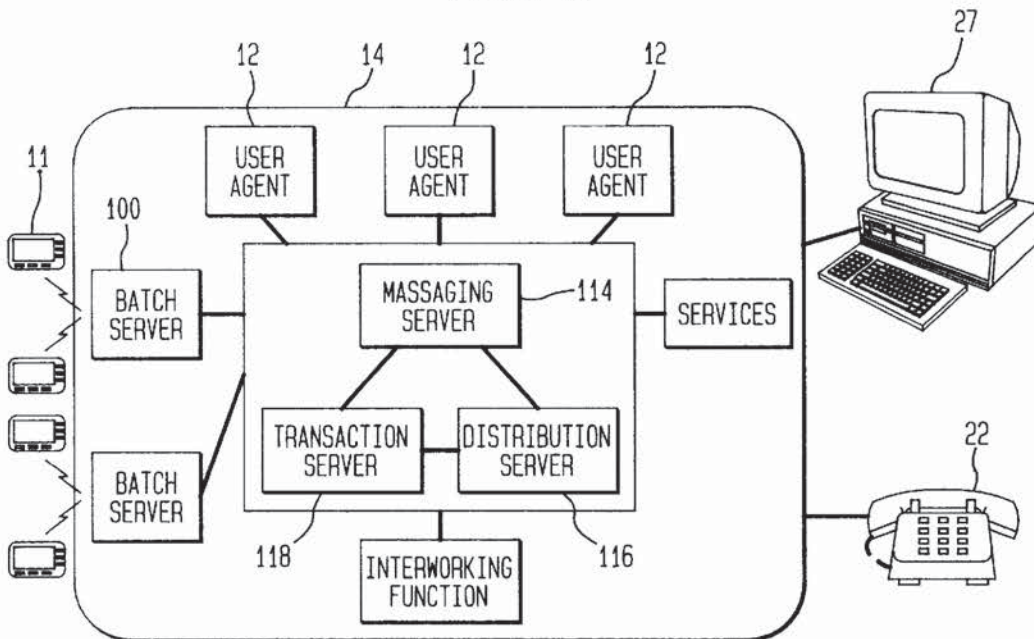


FIG. 6

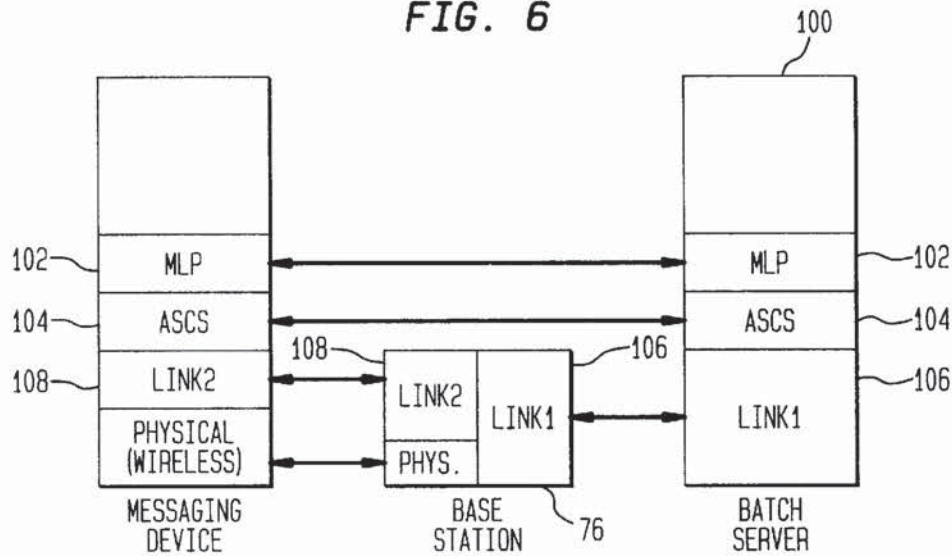
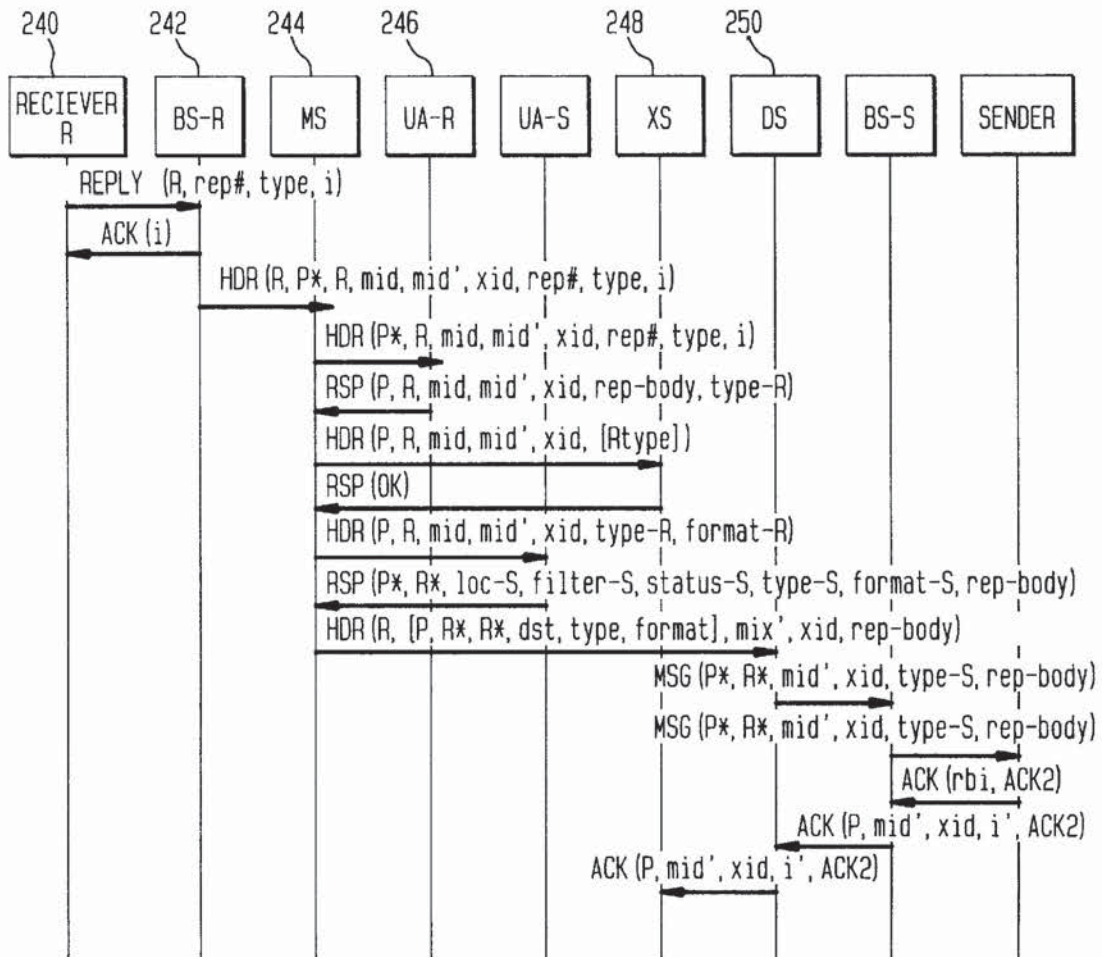


FIG. 8



# Explore Litigation Insights

Docket Alarm provides insights to develop a more informed litigation strategy and the peace of mind of knowing you're on top of things.

## Real-Time Litigation Alerts



Keep your litigation team up-to-date with **real-time alerts** and advanced team management tools built for the enterprise, all while greatly reducing PACER spend.

Our comprehensive service means we can handle Federal, State, and Administrative courts across the country.

## Advanced Docket Research



With over 230 million records, Docket Alarm's cloud-native docket research platform finds what other services can't. Coverage includes Federal, State, plus PTAB, TTAB, ITC and NLRB decisions, all in one place.

Identify arguments that have been successful in the past with full text, pinpoint searching. Link to case law cited within any court document via Fastcase.

## Analytics At Your Fingertips



Learn what happened the last time a particular judge, opposing counsel or company faced cases similar to yours.

Advanced out-of-the-box PTAB and TTAB analytics are always at your fingertips.

## API

Docket Alarm offers a powerful API (application programming interface) to developers that want to integrate case filings into their apps.

## LAW FIRMS

Build custom dashboards for your attorneys and clients with live data direct from the court.

Automate many repetitive legal tasks like conflict checks, document management, and marketing.

## FINANCIAL INSTITUTIONS

Litigation and bankruptcy checks for companies and debtors.

## E-DISCOVERY AND LEGAL VENDORS

Sync your system to PACER to automate legal marketing.