

# SYSTEM OVERVIEW

In this overview



6.0 SQL SERVER EDITION

Datastream Systems is the sole owner of this documentation and may change this documentation without issuing notice. No person or entity may reproduce or distribute this documentation without written permission from Datastream Systems, Inc.

©1999 Datastream Systems, Inc. All rights reserved.

Datastream, e-MRO, MP2, Pocket MP2, MP2 Messenger, MP2 PagerLink, MP2 RequestLink, MP2 WebLink, MP5, and MaintainIt are registered trademarks of Datastream Systems, Inc.

Adobe and Acrobat are trademarks of Adobe Systems, Inc.

Agentry is a trademark of Syclo, LLC.

ChartFx is a trademark of Software FX, Inc.

Crystal Reports is a trademark of Seagate Software, Inc.

DataLIB is a trademark of Everest Enterprises.

dBest Barcodes is a trademark of Hallogram Publishing.

DynaZip is a trademark of Inner Media.

Graphics Server is a trademark of Pinnacle Publishing, Inc.

ImageMan is a registered trademark of Data Techniques, Inc.

InstallShield is a trademark of InstallShield Corporation.

LaserJet is a trademark of Hewlett-Packard Company.

Lotus Notes, cc:Mail, Lotus 1-2-3, and Symphony are trademarks of Lotus Corporation.

NetHASP is a trademark of Aladdin Knowledge Systems Ltd.

Netscape Navigator is a trademark of Netscape, Inc.

Newton and MessagePad are registered trademarks of Apple Computer, Inc.

Novell and GroupWise are registered trademarks of Novell, Inc.

OpenExchange is a trademark of FirstPlace Software.

ORACLE is a registered trademark of Oracle Corporation.

PKZIP and PKUNZIP are registered trademarks of PKWARE, Inc.

Platinum is a registered trademark of Advanced Business Microsystems, Inc.

ProComm Plus is a trademark of Quarterdeck, Inc.

QuattroPro and Paradox are registered trademarks of Corel Corporation.

Sentinel Driver and Rainbow Port Driver are trademarks of Rainbow Technologies, Inc.

Symbol is a trademark of Symbol Technologies, Inc.

TRAKKER is a trademark of Intermec, Inc. MailX is a trademark of Terckland Software.

UNIX is a registered trademark in the United States and other countries, licensed exclusively through X/Open Company Limited.

Windows NT, Windows 95, SQL Server, Internet Explorer, MS Exchange, Excel, Word, Project and Access are trademarks of Microsoft Corporation.

WinFax is a trademark of Symantec, Inc.

Wonderware is a registered trademark and NetDDE and Wonderware InTouch are trademarks of Wonderware Corporation.

All other brand names and product names mentioned in this document and in this software are trademarks, registered trademarks, or service marks of their respective owners.

Datastream Systems, Inc.

50 Datastream Plaza

Greenville, SC 29605

Printed in the United States of America.

May 1999

MP2 Enterprise 6.0 SQL Server Edition System Overview

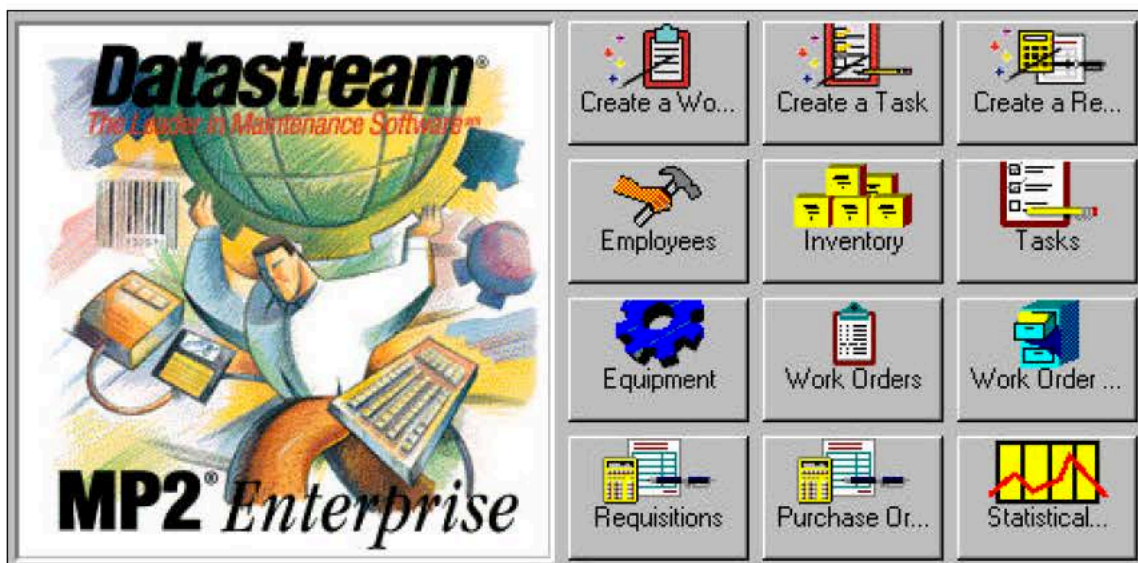
# INTRODUCTION

MP2 Enterprise is an enterprise asset management (EAM) software application that controls maintenance operations. MP2 allows for long-term growth of any size operation. With MP2, either create work orders immediately or build the database completely before creating work orders, optimizing the program's work order generation and reporting capabilities.

MP2 Enterprise is a critical corporate asset for many reasons.

- Helps you to investigate equipment downtime
- Assists you in root cause failure analysis
- Identifies hot maintenance spots in the facility
- Provides justification for additional resources
- Produces precise plant-level reports
- Generates high-level corporate roll-up reports

MP2 Enterprise's features are powerful and comprehensive, and its graphical and intuitive user interface makes it one of the easiest EAM packages to learn and use.





# SECURITY

## Security Setup

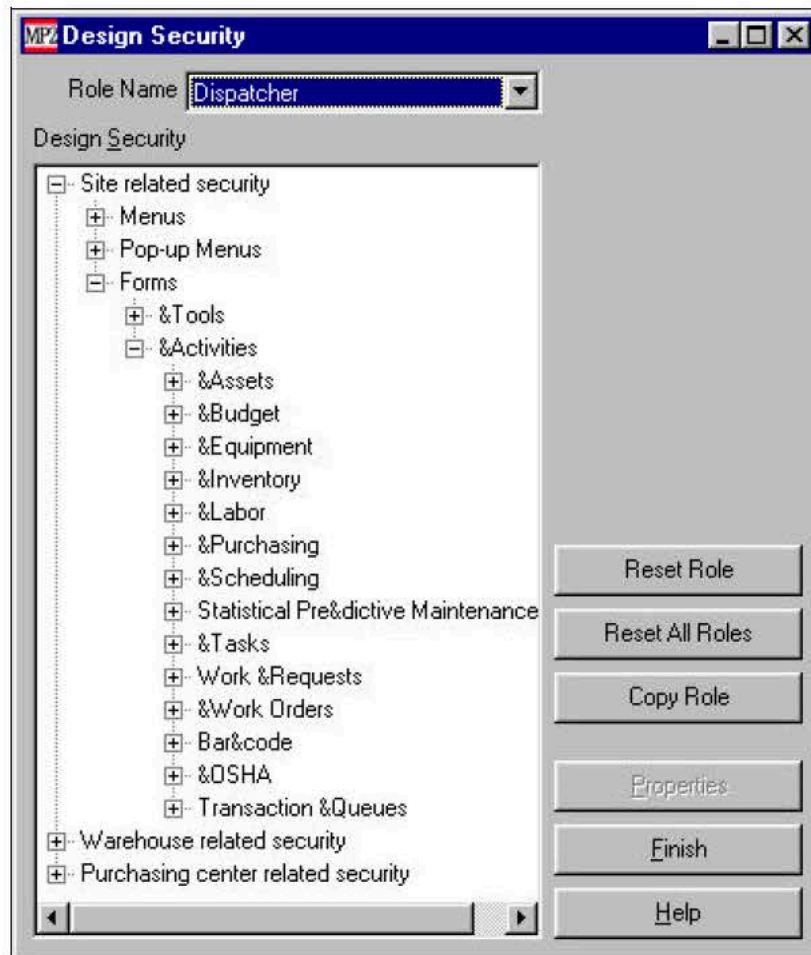
Set up security by creating records for your facility's sites, purchasing centers, and warehouses. Additionally, create user accounts for all MP2 users and roles for each defined security group.

The screenshot displays three overlapping windows from the MP2 application. The 'MP2 Sites' window shows details for 'Oak Grove Plant' with Manager 'MitchellM' and Address '1109 Owens Rd'. The 'MP2 Users' window shows a user with ID 'AA-DONNELLJ' and Name 'James Donnell'. The 'MP2 Role Assignments' window shows a table of user roles.

User ID	Role Type	Role Type ID	Role Name
AA-DONNELLJ	Site	Oak Grove	MaintMgr
AA-DONNELLJ	Site	Piedmont	MaintMgr-View
AA-DONNELLJ	Warehouse	DAKGROVE	MaintMgr
AA-DONNELLJ	Warehouse	OakGrove	MaintMgr
AA-NORTONJ	Site	Oak Grove	MaintMgr-View
AA-NORTONJ	Site	Piedmont	MaintMgr
AA-NORTONJ	Warehouse	Piedmont	MaintMgr
AA-SMITHJ	Site	Oak Grove	MaintMgr
AA-SMITHJ	Site	Piedmont	MaintMgr
DAW	Purchasing Center	Oak Grove	System Administrator
DAW	Purchasing Center	Piedmont	System Administrator
DAW	Site	Oak Grove	System Administrator
DAW	Site	Piedmont	System Administrator
DAW	Site	Rutherford	System Administrator
DAW	Warehouse	DAKGROVE	System Administrator

## Security Design

Design the level of security necessary for your facility so that only authorized personnel can start MP2 and access data. Additionally, customize MP2 menu titles and field names so that they are site-specific.



# Explore Litigation Insights

Docket Alarm provides insights to develop a more informed litigation strategy and the peace of mind of knowing you're on top of things.

## Real-Time Litigation Alerts



Keep your litigation team up-to-date with **real-time alerts** and advanced team management tools built for the enterprise, all while greatly reducing PACER spend.

Our comprehensive service means we can handle Federal, State, and Administrative courts across the country.

## Advanced Docket Research



With over 230 million records, Docket Alarm's cloud-native docket research platform finds what other services can't. Coverage includes Federal, State, plus PTAB, TTAB, ITC and NLRB decisions, all in one place.

Identify arguments that have been successful in the past with full text, pinpoint searching. Link to case law cited within any court document via Fastcase.

## Analytics At Your Fingertips



Learn what happened the last time a particular judge, opposing counsel or company faced cases similar to yours.

Advanced out-of-the-box PTAB and TTAB analytics are always at your fingertips.

## API

Docket Alarm offers a powerful API (application programming interface) to developers that want to integrate case filings into their apps.

## LAW FIRMS

Build custom dashboards for your attorneys and clients with live data direct from the court.

Automate many repetitive legal tasks like conflict checks, document management, and marketing.

## FINANCIAL INSTITUTIONS

Litigation and bankruptcy checks for companies and debtors.

## E-DISCOVERY AND LEGAL VENDORS

Sync your system to PACER to automate legal marketing.