



(12) **United States Patent**  
**Pothos et al.**

(10) **Patent No.:** **US 7,210,119 B2**  
(45) **Date of Patent:** **Apr. 24, 2007**

(54) **HANDLING UNSCHEDULED TASKS IN A SCHEDULING PROCESS**

(56) **References Cited**

U.S. PATENT DOCUMENTS

(75) Inventors: **Dionisios Pothos**, London (GB);  
**Robert N W Laithwaite**, Ipswich (GB); **Ian S Alletson**, Rochdale (GB)

4,852,001 A 7/1989 Tsushima et al.  
5,408,663 A 4/1995 Miller  
5,615,121 A \* 3/1997 Babayev et al. .... 705/9

(73) Assignee: **@Road, Ltd.**, Suffolk (GB)

(Continued)

(\* ) Notice: Subject to any disclaimer, the term of this patent is extended or adjusted under 35 U.S.C. 154(b) by 477 days.

FOREIGN PATENT DOCUMENTS

WO WO 98/22897 5/1998

(21) Appl. No.: **10/239,087**

OTHER PUBLICATIONS

(22) PCT Filed: **Mar. 1, 2001**

Parrott et al., "Comparing the WMS real time algorithm with AIP predictive schedulers", BT Technology Journal, vol. 13, No. 1, Jan. 1995, pp. 110-120.

(86) PCT No.: **PCT/GB01/00874**

§ 371 (c)(1),  
(2), (4) Date: **Sep. 19, 2002**

*Primary Examiner*—Ted T. Vo  
*Assistant Examiner*—Chih-Ching Chow  
(74) *Attorney, Agent, or Firm*—Nixon & Vanderhye PC

(87) PCT Pub. No.: **WO01/75701**

(57) **ABSTRACT**

PCT Pub. Date: **Oct. 11, 2001**

Tasks (T) such as repair jobs on a telecommunications system, that are to be performed by a plurality of resources such as field engineers (E), at different locations in a geographical area (2), are scheduled by means of a scheduler (10) at a work manager server (5). The scheduler provides schedule data (11) corresponding to schedules of the tasks that individual ones of the resources are to carry out, from task data (4) concerning the tasks to be carried out and resource data (6) concerning characteristics of resources available to carry out the tasks over a given period. Not all the tasks are scheduled, resulting in unscheduled task data (11a). The schedule data (11) is downloaded to a workstation (7) together with the unscheduled task data. The downloaded data is analysed at the workstation to determine a candidate resource (E) to perform the task (T) corresponding to the unscheduled task data.

(65) **Prior Publication Data**

US 2003/0041087 A1 Feb. 27, 2003

(30) **Foreign Application Priority Data**

Mar. 31, 2000 (EP) ..... 00302758

(51) **Int. Cl.**

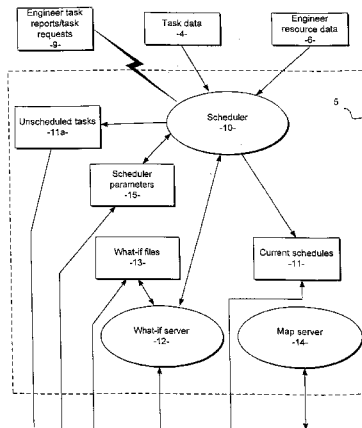
**G06F 9/44** (2006.01)  
**G06F 9/46** (2006.01)  
**G05B 19/418** (2006.01)

(52) **U.S. Cl.** ..... 717/102; 718/102; 705/8

(58) **Field of Classification Search** ..... 717/101-106;  
705/7-9; 718/100; 709/229; 708/102

See application file for complete search history.

**13 Claims, 18 Drawing Sheets**



# US 7,210,119 B2

Page 2

---

## U.S. PATENT DOCUMENTS

5,826,236 A 10/1998 Narimatsu et al.  
5,890,134 A 3/1999 Fox

6,578,005 B1 \* 6/2003 Lesaint et al. .... 705/8  
2003/0229529 A1 \* 12/2003 Mui et al. .... 705/8

\* cited by examiner

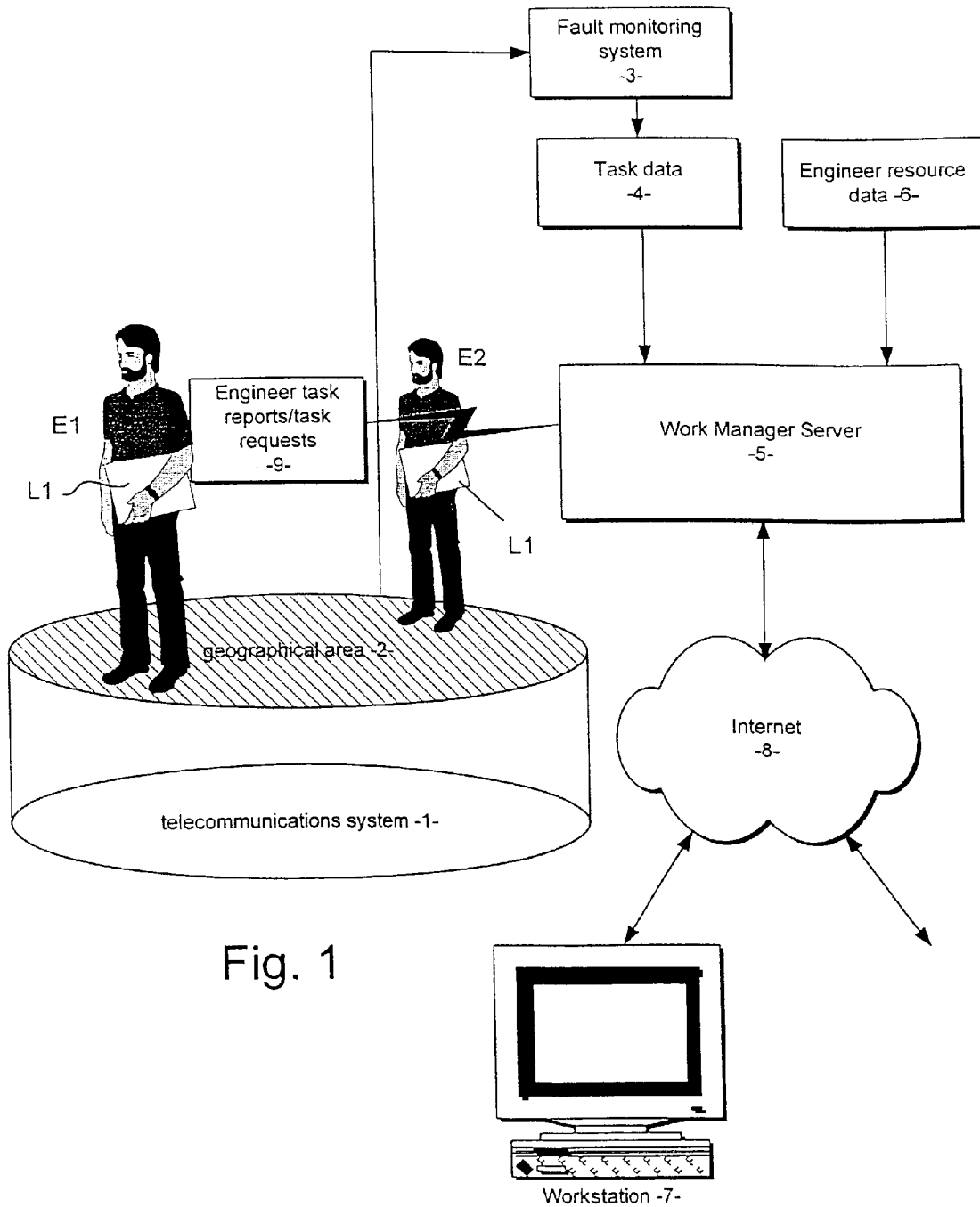
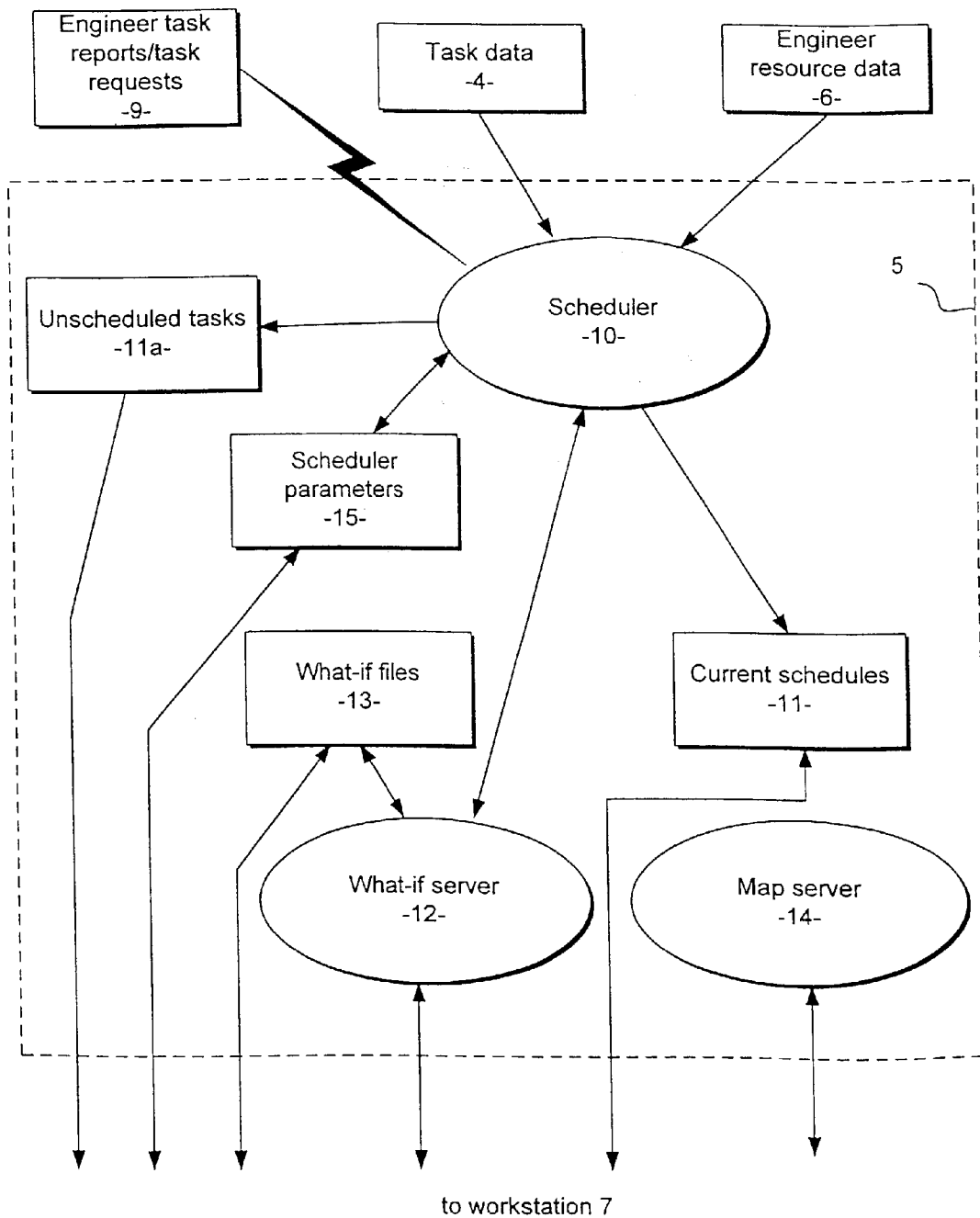


Fig. 1

Fig. 2



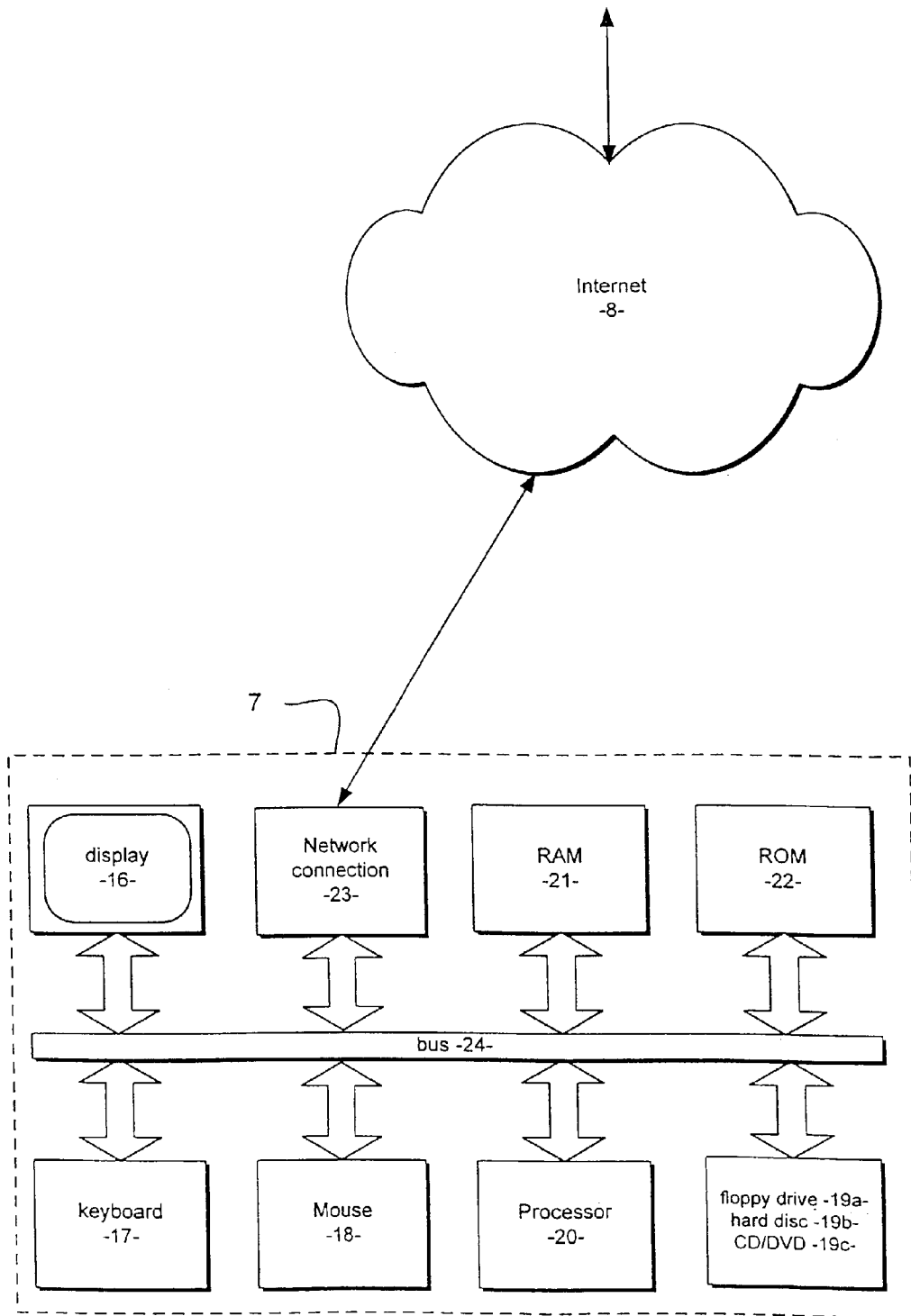


Fig. 3

# Explore Litigation Insights

Docket Alarm provides insights to develop a more informed litigation strategy and the peace of mind of knowing you're on top of things.

## Real-Time Litigation Alerts



Keep your litigation team up-to-date with **real-time alerts** and advanced team management tools built for the enterprise, all while greatly reducing PACER spend.

Our comprehensive service means we can handle Federal, State, and Administrative courts across the country.

## Advanced Docket Research



With over 230 million records, Docket Alarm's cloud-native docket research platform finds what other services can't. Coverage includes Federal, State, plus PTAB, TTAB, ITC and NLRB decisions, all in one place.

Identify arguments that have been successful in the past with full text, pinpoint searching. Link to case law cited within any court document via Fastcase.

## Analytics At Your Fingertips



Learn what happened the last time a particular judge, opposing counsel or company faced cases similar to yours.

Advanced out-of-the-box PTAB and TTAB analytics are always at your fingertips.

## API

Docket Alarm offers a powerful API (application programming interface) to developers that want to integrate case filings into their apps.

## LAW FIRMS

Build custom dashboards for your attorneys and clients with live data direct from the court.

Automate many repetitive legal tasks like conflict checks, document management, and marketing.

## FINANCIAL INSTITUTIONS

Litigation and bankruptcy checks for companies and debtors.

## E-DISCOVERY AND LEGAL VENDORS

Sync your system to PACER to automate legal marketing.