



US006115393A

United States Patent [19]

[11] Patent Number: **6,115,393**

Engel et al.

[45] Date of Patent: **Sep. 5, 2000**

- [54] NETWORK MONITORING 5,142,528 8/1992 Kobayashi et al. 370/79
- [75] Inventors: Ferdinand Engel, Northborough; 5,142,622 8/1992 Owens 395/200
- Kendall S. Jones, Newton Center; 5,150,464 9/1992 Sidhu et al. 395/200
- Kary Robertson, Bedford, all of Mass.; 5,347,524 9/1994 l'Anson et al. 371/20.1
- David M. Thompson, Redmond, Wash.; Gerard White, Tyngsborough, Mass.

FOREIGN PATENT DOCUMENTS

WO 88/06822 9/1988 WIPO .

OTHER PUBLICATIONS

Hewlett-Packard brochure regarding local area network protocol analyzer (HP 4972A), Jun. 1987.

F. Kaplan et al., "Application of Expert Systems to Transmission Maintenance", IEEE, 1986, pp. 449-453.

D.M. Chiu et al., "Studying the User and Application Behaviour of a Large Network", Jun. 30, 1988, pp. 1-23.

R. Sudama et al., "The Design of a Realtime DECnet Performance Monitor", Jul. 15, 1988, pp. 1-23.

B.L. Hitson, "Knowledge-Based Monitoring and Control: An Approach to Understanding the Behavior of TCP/IP Network Protocols", ACM, 1988, pp. 210-221.

A.T. Dabhura et al., "Formal Methods for Generating Protocol Conformance Test Sequences", Proceedings of the IEEE, vol. 78, No. 8, Aug. 1990, pp. 1317-1326.

Hewlett-Packard Datasheet brochure, "Analyzing TCP/IP Networks with the HP 4972A", Sep. 1989, pp. 1-8.

Primary Examiner—Ajit Patel

Attorney, Agent, or Firm—Fish & Richardson P.C.

[73] Assignee: **Concord Communications, Inc.**, Marlboro, Mass.

[21] Appl. No.: **08/505,083**

[22] Filed: **Jul. 21, 1995**

Related U.S. Application Data

[60] Division of application No. 07/761,269, Sep. 17, 1991, abandoned, which is a continuation-in-part of application No. 07/684,695, Apr. 12, 1991, abandoned.

[51] Int. Cl.⁷ **H04J 3/16; H04J 3/22**

[52] U.S. Cl. **370/469**

[58] Field of Search 370/94.1, 85.13, 370/85.14, 94.2, 110.1, 79, 241, 252, 254, 465, 464, 466, 467, 469; 395/200, 183.15, 189.01, 189.04, 200.54, 285, 831; 371/20.1

[56] References Cited

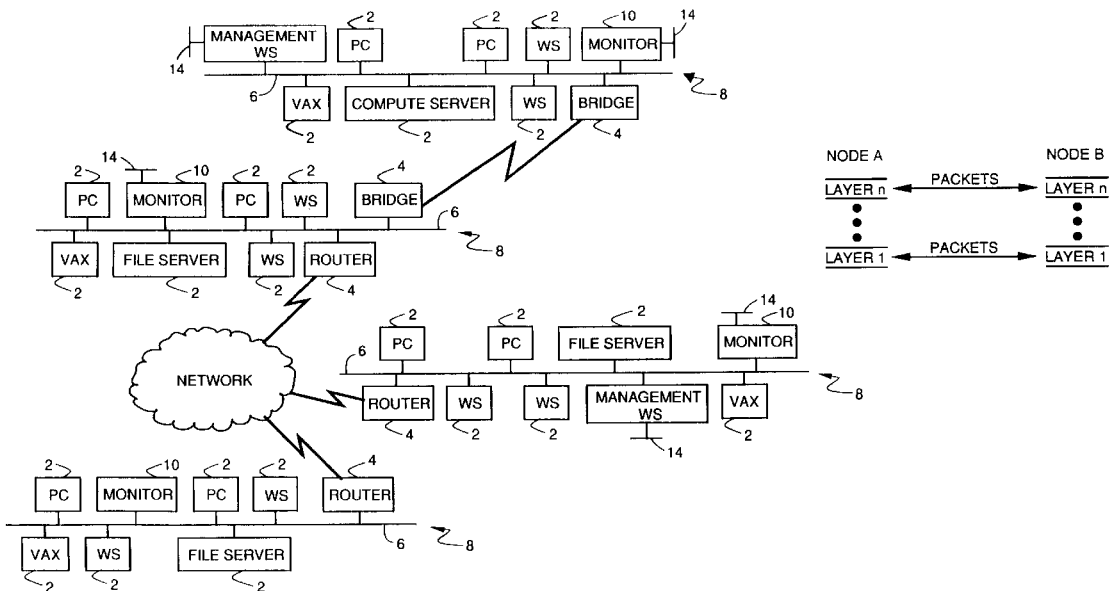
U.S. PATENT DOCUMENTS

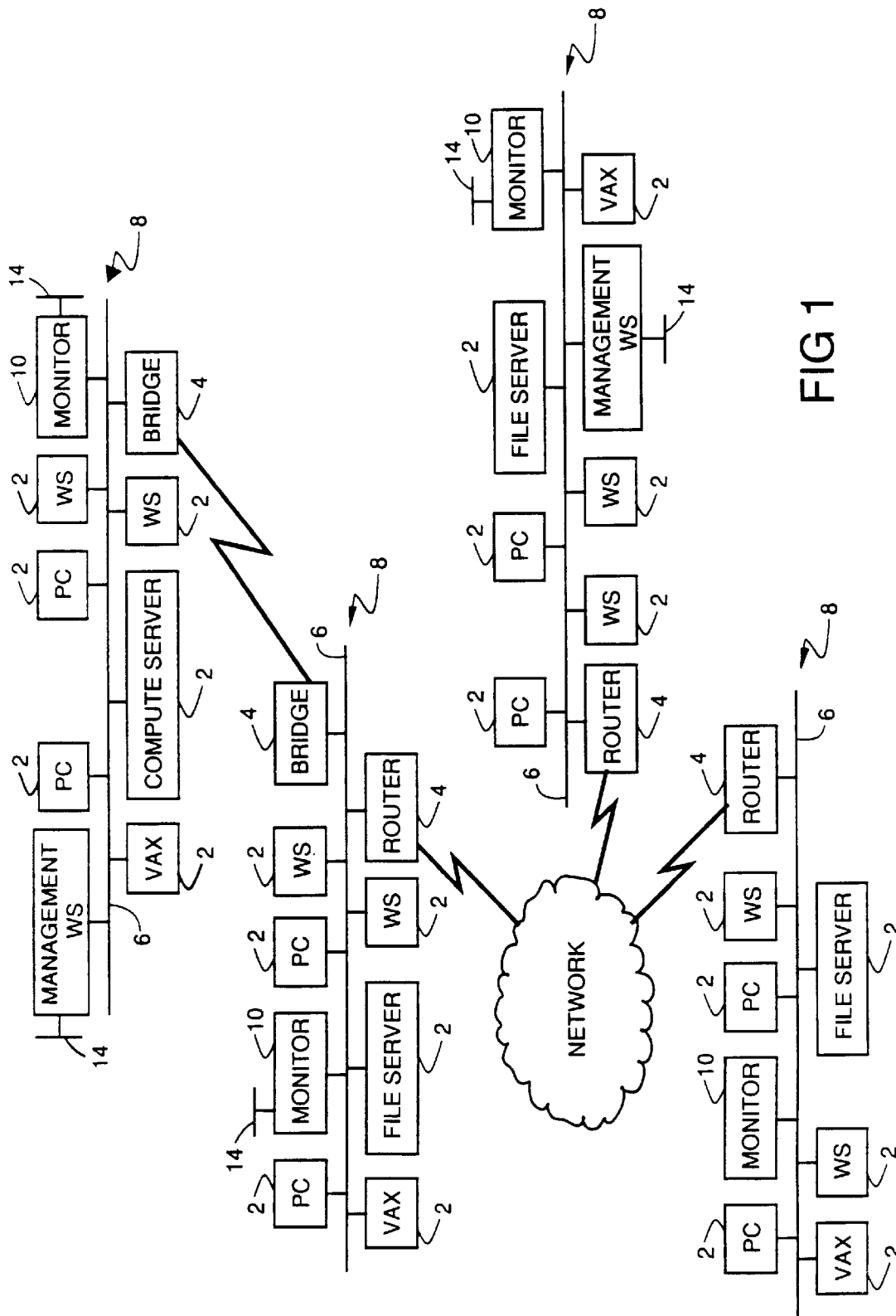
- 4,648,061 3/1987 Foster 340/825.06
- 4,817,080 3/1989 Soha .
- 4,887,260 12/1989 Carden et al. .
- 4,930,159 5/1990 Kravitz et al. .
- 5,021,949 6/1991 Morten et al. 364/200
- 5,025,491 6/1991 Tsuchiya et al. .
- 5,038,345 8/1991 Roth 340/825.15
- 5,060,228 10/1991 Tsutsui et al. 370/85.13
- 5,097,469 3/1992 Douglas .
- 5,101,402 3/1992 Chiu et al. .
- 5,136,580 8/1992 Vidlock et al. 370/85.13

[57] ABSTRACT

Monitoring is done of communications which occur in a network of nodes, each communication being effected by a transmission of one or more packets among two or more communicating nodes, each communication complying with a predefined communication protocol selected from among protocols available in the network. The contents of packets are detected passively and in real time, communication information associated with multiple protocols is derived from the packet contents.

25 Claims, 38 Drawing Sheets





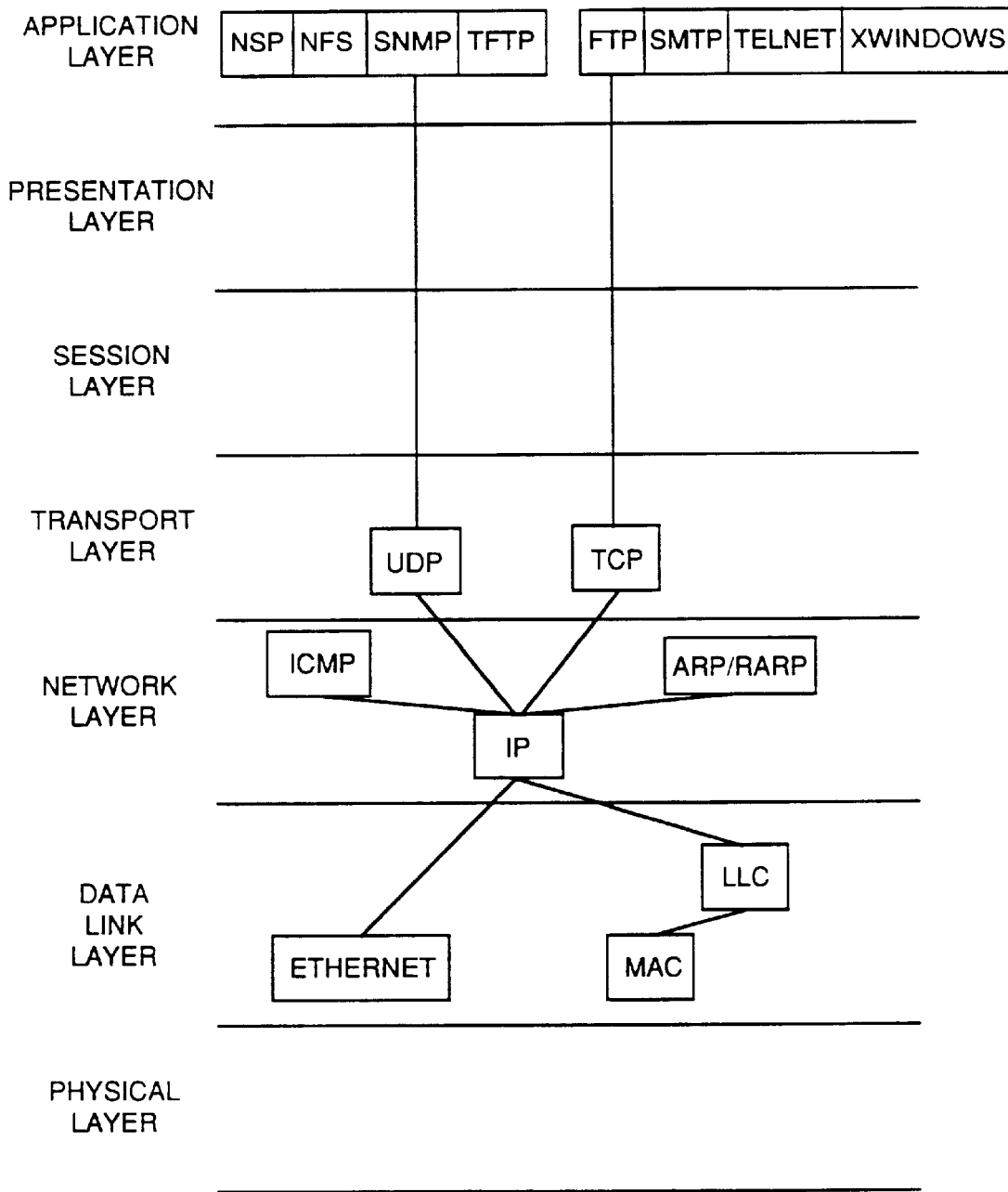


FIG 2

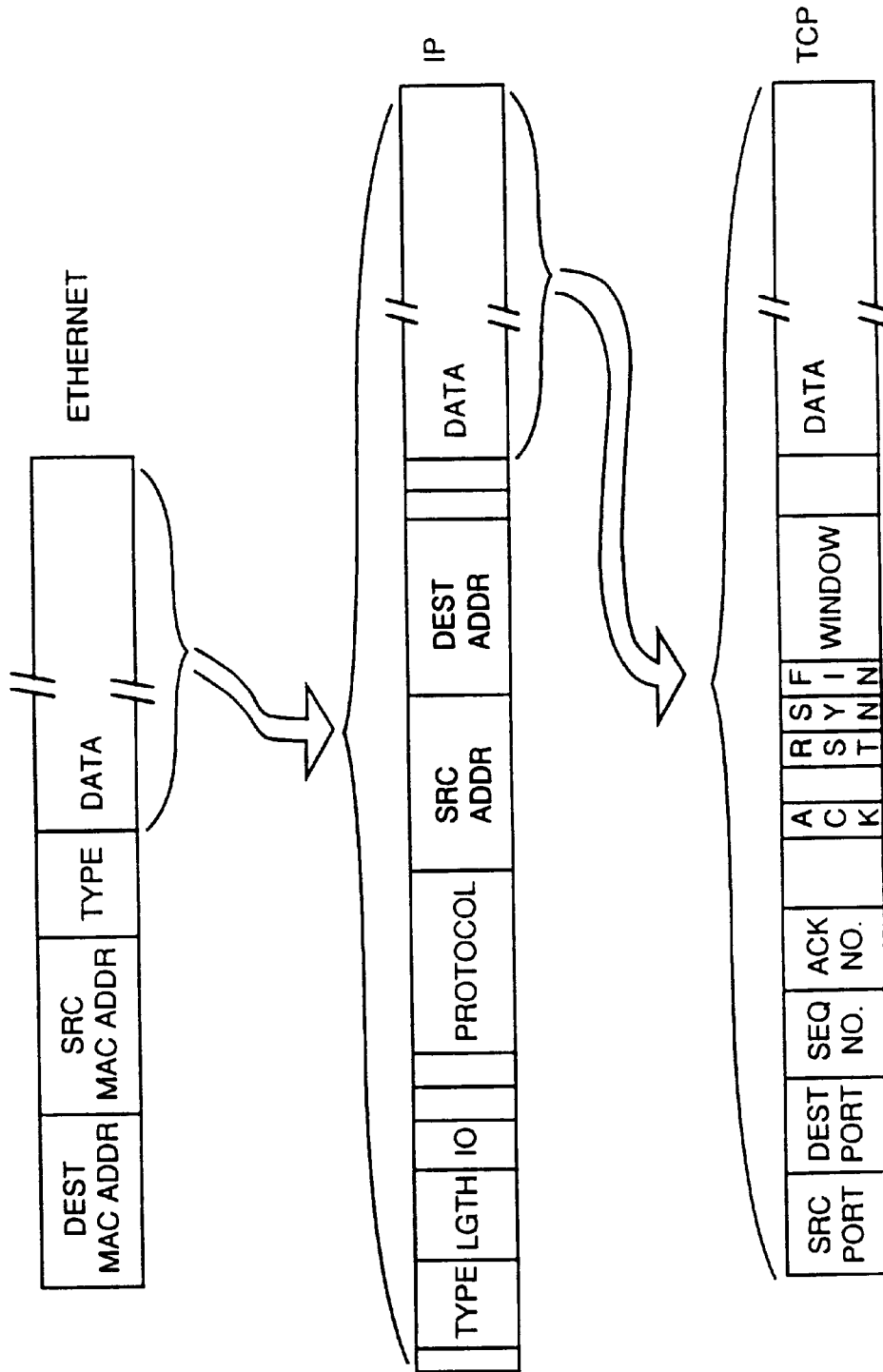


FIG 3

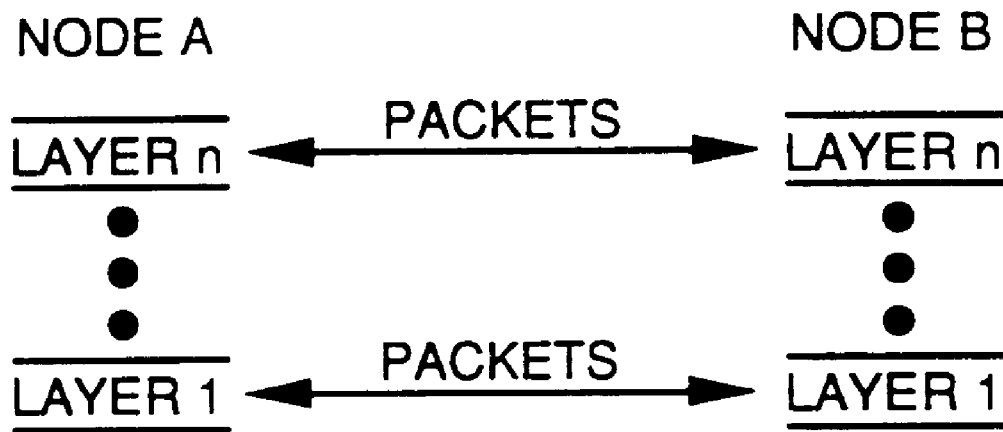


FIG 4

Explore Litigation Insights

Docket Alarm provides insights to develop a more informed litigation strategy and the peace of mind of knowing you're on top of things.

Real-Time Litigation Alerts



Keep your litigation team up-to-date with **real-time alerts** and advanced team management tools built for the enterprise, all while greatly reducing PACER spend.

Our comprehensive service means we can handle Federal, State, and Administrative courts across the country.

Advanced Docket Research



With over 230 million records, Docket Alarm's cloud-native docket research platform finds what other services can't. Coverage includes Federal, State, plus PTAB, TTAB, ITC and NLRB decisions, all in one place.

Identify arguments that have been successful in the past with full text, pinpoint searching. Link to case law cited within any court document via Fastcase.

Analytics At Your Fingertips



Learn what happened the last time a particular judge, opposing counsel or company faced cases similar to yours.

Advanced out-of-the-box PTAB and TTAB analytics are always at your fingertips.

API

Docket Alarm offers a powerful API (application programming interface) to developers that want to integrate case filings into their apps.

LAW FIRMS

Build custom dashboards for your attorneys and clients with live data direct from the court.

Automate many repetitive legal tasks like conflict checks, document management, and marketing.

FINANCIAL INSTITUTIONS

Litigation and bankruptcy checks for companies and debtors.

E-DISCOVERY AND LEGAL VENDORS

Sync your system to PACER to automate legal marketing.