



US005688357A

United States Patent [19]

Hanawa

[11] Patent Number: 5,688,357

[45] Date of Patent: Nov. 18, 1997

[54] **AUTOMATIC FREQUENCY TUNING OF AN RF POWER SOURCE OF AN INDUCTIVELY COUPLED PLASMA REACTOR**

5,540,824 7/1996 Yin et al. 204/298.34
5,558,722 9/1996 Okumura et al. 118/723 I

[75] Inventor: **Hiroji Hanawa**, Sunnyvale, Calif.

[73] Assignee: **Applied Materials, Inc.**, Santa Clara, Calif.

[21] Appl. No.: **389,888**

[22] Filed: **Feb. 15, 1995**

[51] Int. Cl.⁶ **C23F 1/02**

[52] U.S. Cl. **156/345; 156/643.1**

[58] Field of Search 118/723 I, 723 IR,
118/723 E, 723 ER, 723 MP, 671; 156/345,
643.1, 626.1, 627.1; 216/68; 204/298.08,
298.32, 298.03

[56] References Cited

U.S. PATENT DOCUMENTS

3,573,840	4/1971	Gouillou et al.	343/895
4,795,529	1/1989	Kawasaki et al.	156/643
4,842,683	6/1989	Cheng et al.	156/345
4,844,775	7/1989	Keeble	156/643
4,872,947	10/1989	Wang et al.	156/643
4,948,458	8/1990	Ogle	156/643
4,954,212	9/1990	Gabriel et al.	156/627
4,992,665	2/1991	Mohl	250/423 R
5,122,251	6/1992	Campbell et al.	204/298.06
5,234,529	8/1993	Johnson	156/345
5,277,751	1/1994	Ogle	156/643
5,280,154	1/1994	Cuomo et al.	219/121.52
5,346,578	9/1994	Benzing et al.	156/345
5,368,710	11/1994	Chen et al.	264/192.32
5,401,350	3/1995	Patrick et al.	156/345
5,474,648	12/1995	Patrick et al.	156/627.1

FOREIGN PATENT DOCUMENTS

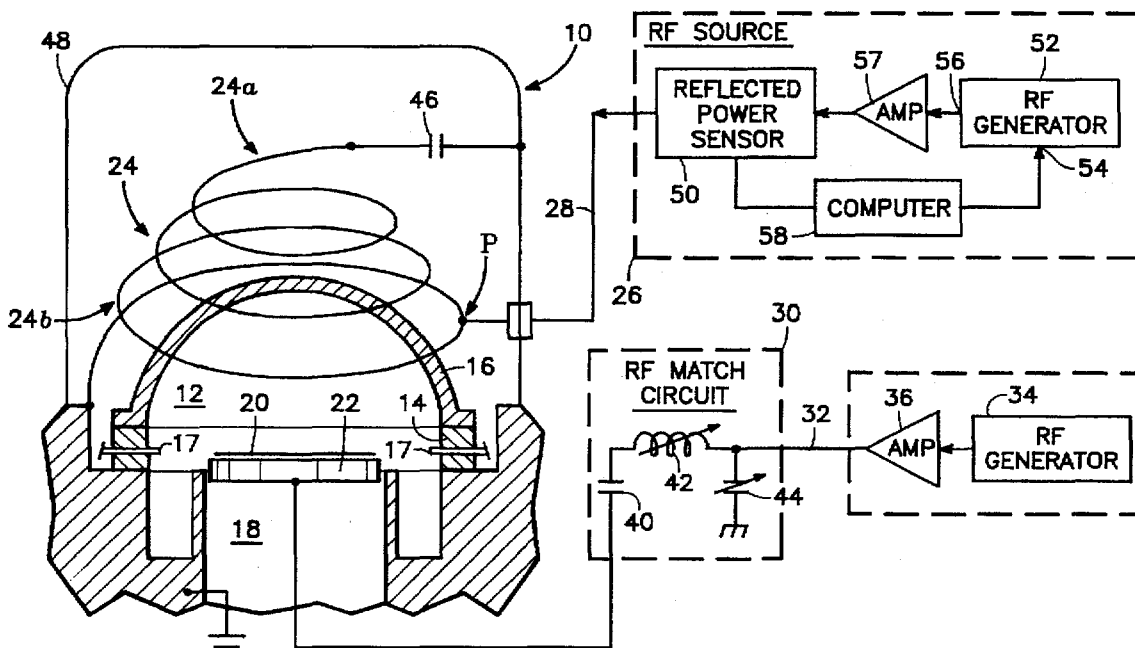
0 058 820	1/1982	European Pat. Off. .
0 379 828 A2	8/1990	European Pat. Off. .
0 379 828 A3	8/1990	European Pat. Off. .
0 489 407	6/1992	European Pat. Off. .
0 520 519 A1	12/1992	European Pat. Off. .
0 552 491 A1	7/1993	European Pat. Off. .
0 593 924	4/1994	European Pat. Off. .
0 596 551 A1	5/1994	European Pat. Off. .
0 602 764	6/1994	European Pat. Off. .
2 231 197	11/1990	United Kingdom .
WO 92/20833	11/1992	WIPO .

Primary Examiner—John Niebling
Assistant Examiner—Joni Y. Chang
Attorney, Agent, or Firm—Michaelson & Wallace

[57] ABSTRACT

A plasma reactor has a reactor chamber for containing a semiconductor wafer to be processed and gas inlet apparatus for introducing an ionizable gas into the chamber, a variable frequency RF power source, an RF antenna near the chamber, the antenna connected to the RF power source for coupling RF power to the ionizable gas to produce a plasma therefrom, a power sensor connected to the antenna for sensing either (or both) transmitted power to the plasma or reflected power to said source, and a control circuit connected to a control input of the variable frequency RF power source and responsive to the power sensor for changing the frequency of the variable frequency RF power source so as to either increase the transmitted power or decrease the reflected power, so as to provide an accurate RF match instantly responsive to changes in plasma impedance.

30 Claims, 13 Drawing Sheets



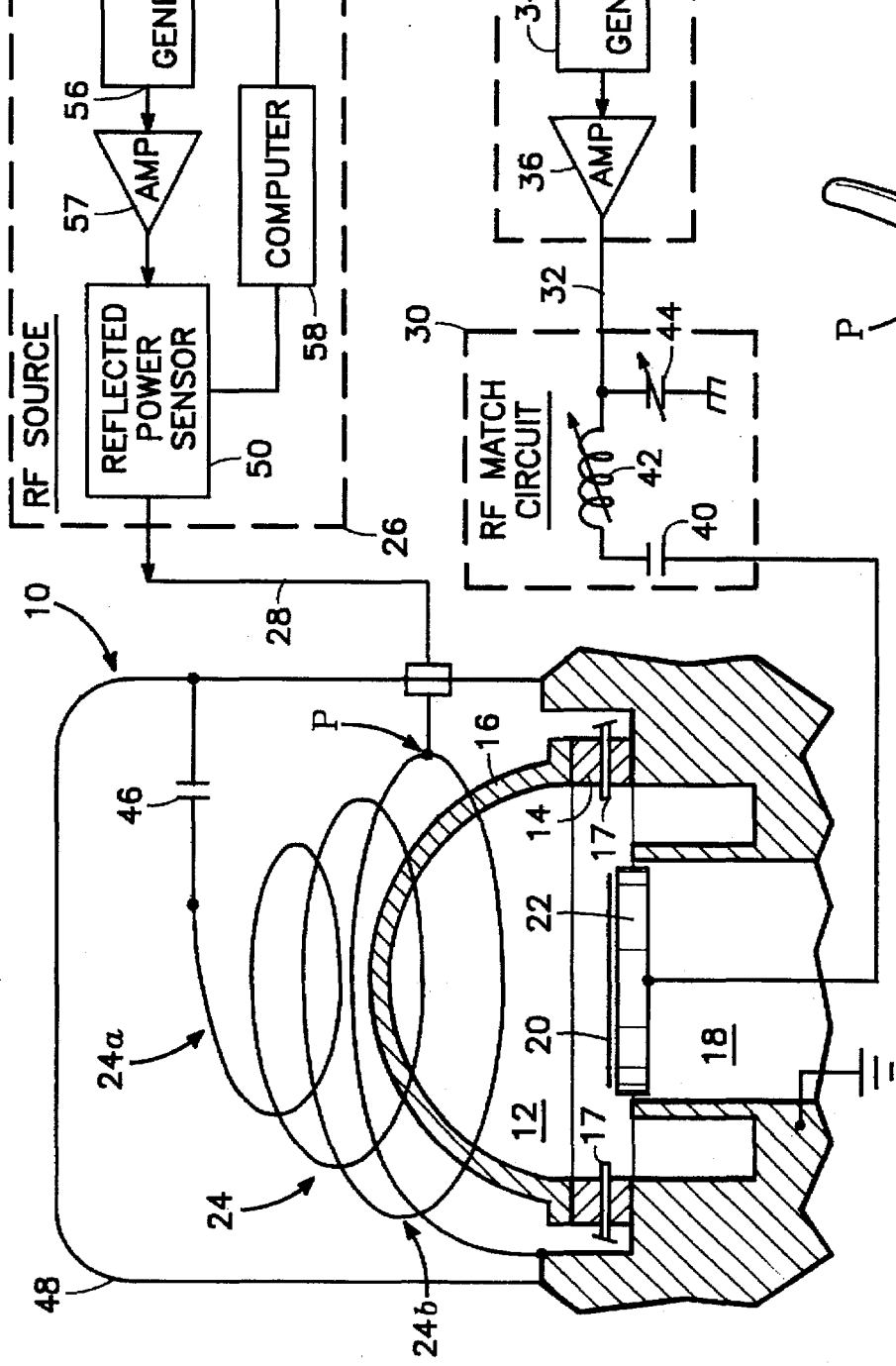


FIG. 1

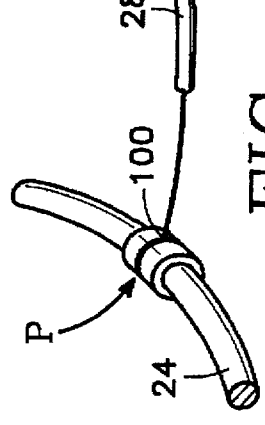


FIG. 2

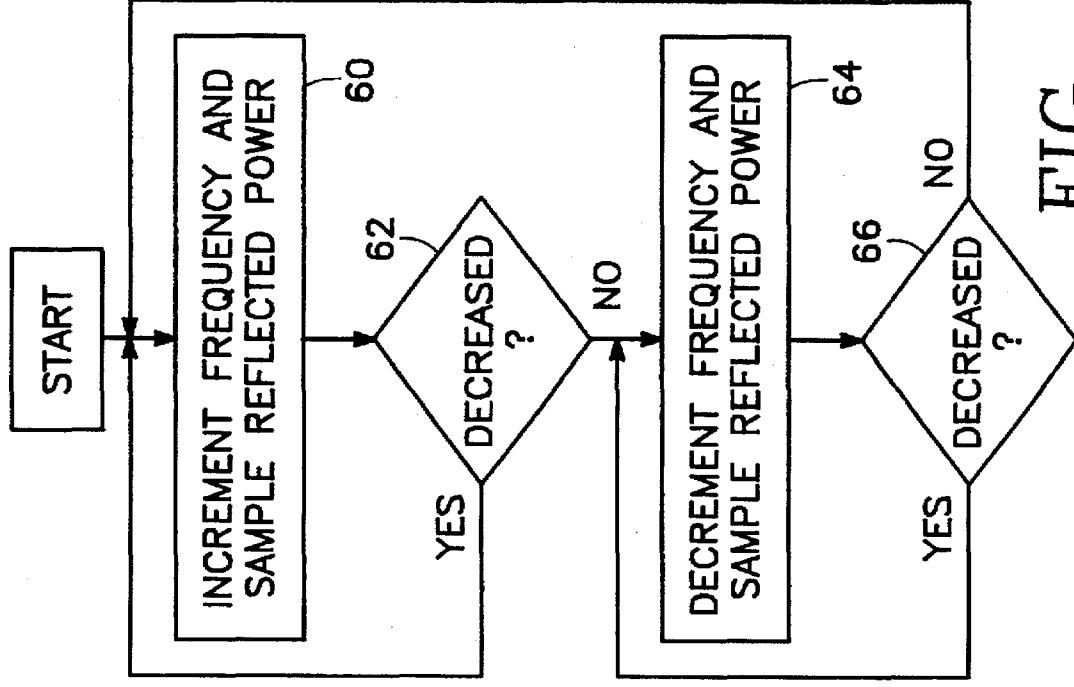


FIG. 2

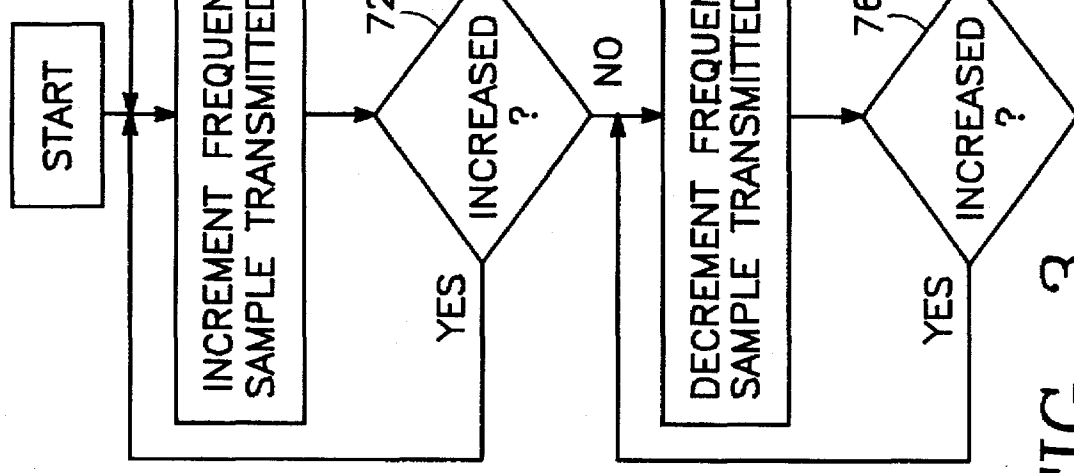


FIG. 3

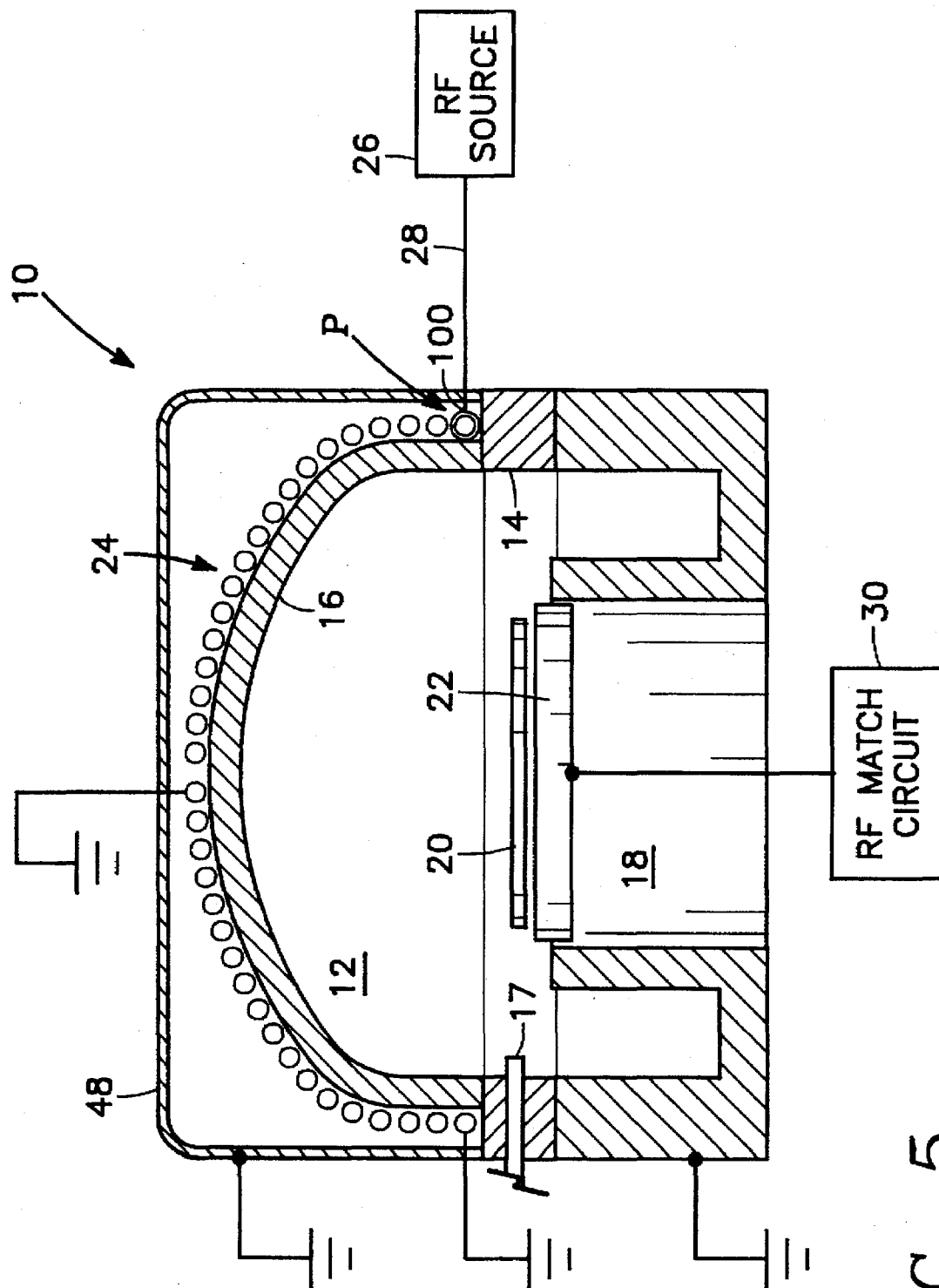


FIG. 5

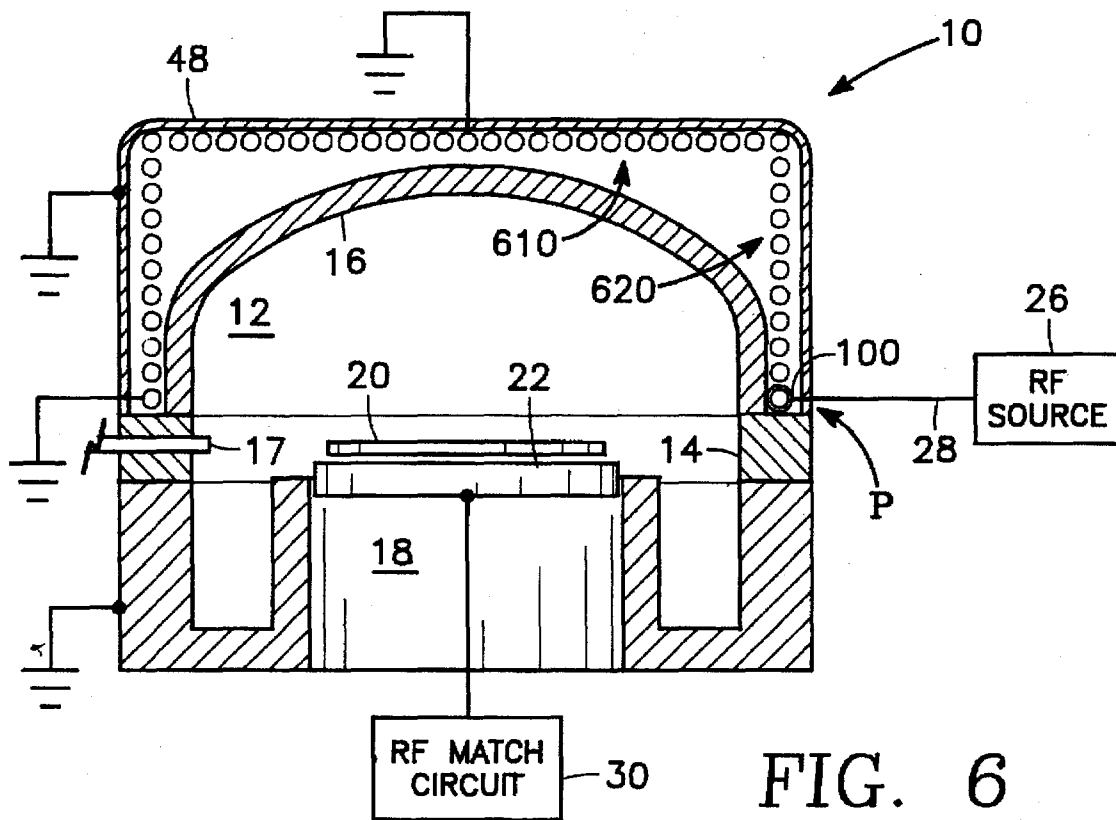


FIG. 6

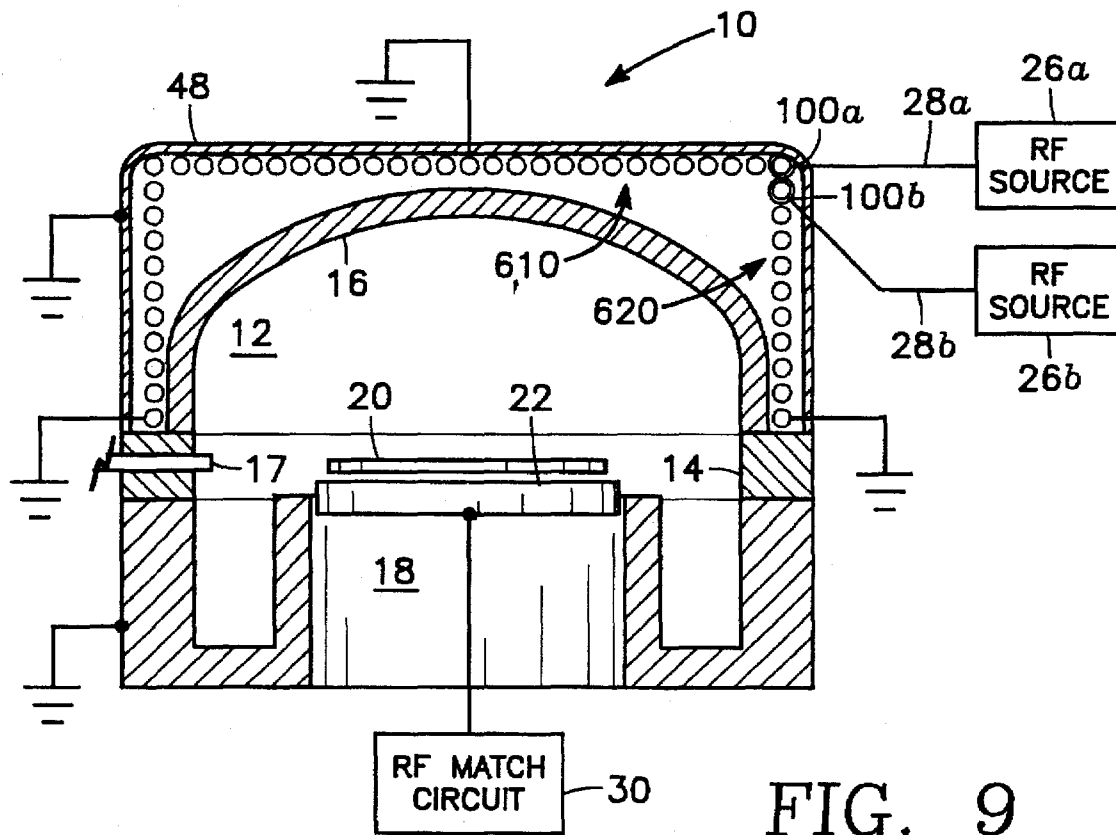


FIG. 9

Explore Litigation Insights

Docket Alarm provides insights to develop a more informed litigation strategy and the peace of mind of knowing you're on top of things.

Real-Time Litigation Alerts



Keep your litigation team up-to-date with **real-time alerts** and advanced team management tools built for the enterprise, all while greatly reducing PACER spend.

Our comprehensive service means we can handle Federal, State, and Administrative courts across the country.

Advanced Docket Research



With over 230 million records, Docket Alarm's cloud-native docket research platform finds what other services can't. Coverage includes Federal, State, plus PTAB, TTAB, ITC and NLRB decisions, all in one place.

Identify arguments that have been successful in the past with full text, pinpoint searching. Link to case law cited within any court document via Fastcase.

Analytics At Your Fingertips



Learn what happened the last time a particular judge, opposing counsel or company faced cases similar to yours.

Advanced out-of-the-box PTAB and TTAB analytics are always at your fingertips.

API

Docket Alarm offers a powerful API (application programming interface) to developers that want to integrate case filings into their apps.

LAW FIRMS

Build custom dashboards for your attorneys and clients with live data direct from the court.

Automate many repetitive legal tasks like conflict checks, document management, and marketing.

FINANCIAL INSTITUTIONS

Litigation and bankruptcy checks for companies and debtors.

E-DISCOVERY AND LEGAL VENDORS

Sync your system to PACER to automate legal marketing.