



US 20080133699A1

(19) **United States**

(12) **Patent Application Publication**  
Craw et al.

(10) **Pub. No.: US 2008/0133699 A1**

(43) **Pub. Date: Jun. 5, 2008**

(54) **DEVICE DATA SHEETS AND DATA  
DICTIONARIES FOR A DYNAMIC MEDICAL  
OBJECT INFORMATION BASE**

(30) **Foreign Application Priority Data**

Mar. 30, 2006 (US) ..... PCT/US06/11373

**Publication Classification**

(76) Inventors: **Chad E. Craw**, Fulton, NY (US);  
**James J. DelloStritto**, Jordan, NY  
(US); **Song Y. Chung**, Canton, GA  
(US); **Ronald J. Blaszak**, Syracuse,  
NY (US); **Frank LoMascolo**,  
Auburn, NY (US)

(51) **Int. Cl.**  
*G06F 15/173* (2006.01)  
*G06F 17/30* (2006.01)  
*G06F 15/16* (2006.01)  
(52) **U.S. Cl.** ..... **709/217; 709/225; 707/3; 707/E17.014**  
(57) **ABSTRACT**

Correspondence Address:  
**PATTON BOGGS LLP**  
**8484 WESTPARK DRIVE, SUITE 900**  
**MCLEAN, VA 22102**

Methods and systems are provided for communicating between network devices. A data dictionary may be derived from a device data sheet. The data dictionary may include one or more data definitions specific to the network device and a global unique identifier for the network device. The data dictionary and data are received from the network device. Data definitions from the data dictionary are used to extract and process information from the data. The data dictionary may include a hierarchal classification scheme for data including a first level, a second level and a third level, wherein the first level defines a type of data, wherein the second level defines a type of action, and wherein the third level defines an object of the action.

(21) Appl. No.: **11/905,829**

(22) Filed: **Oct. 4, 2007**

**Related U.S. Application Data**

(60) Provisional application No. 60/848,993, filed on Oct. 4, 2006.

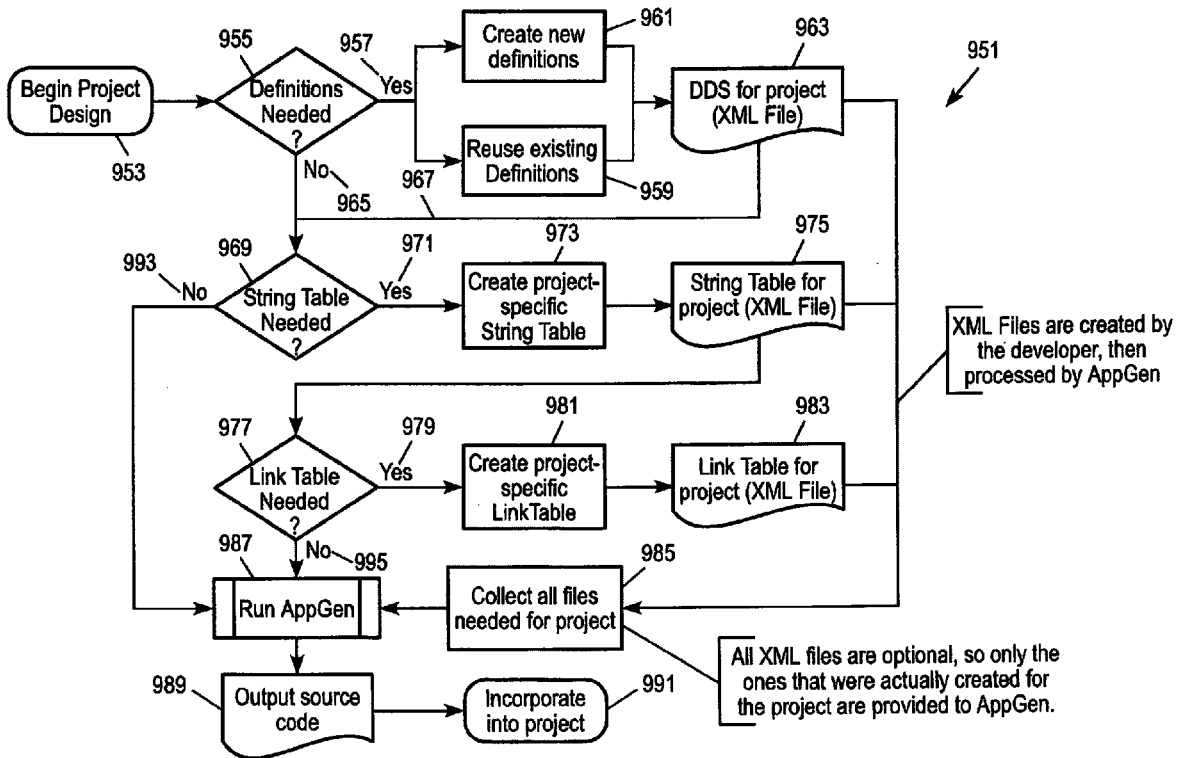


FIG. 1A

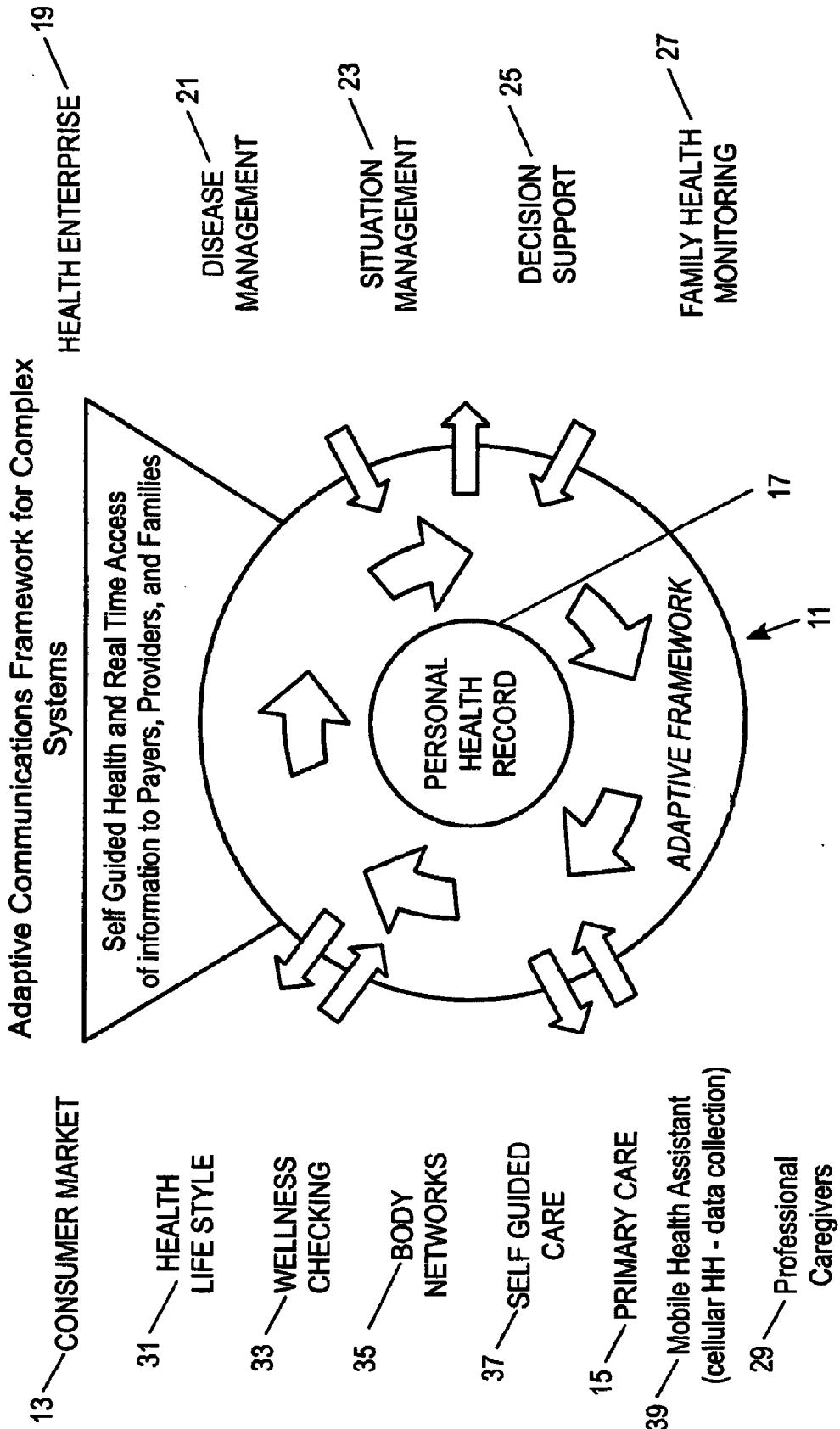
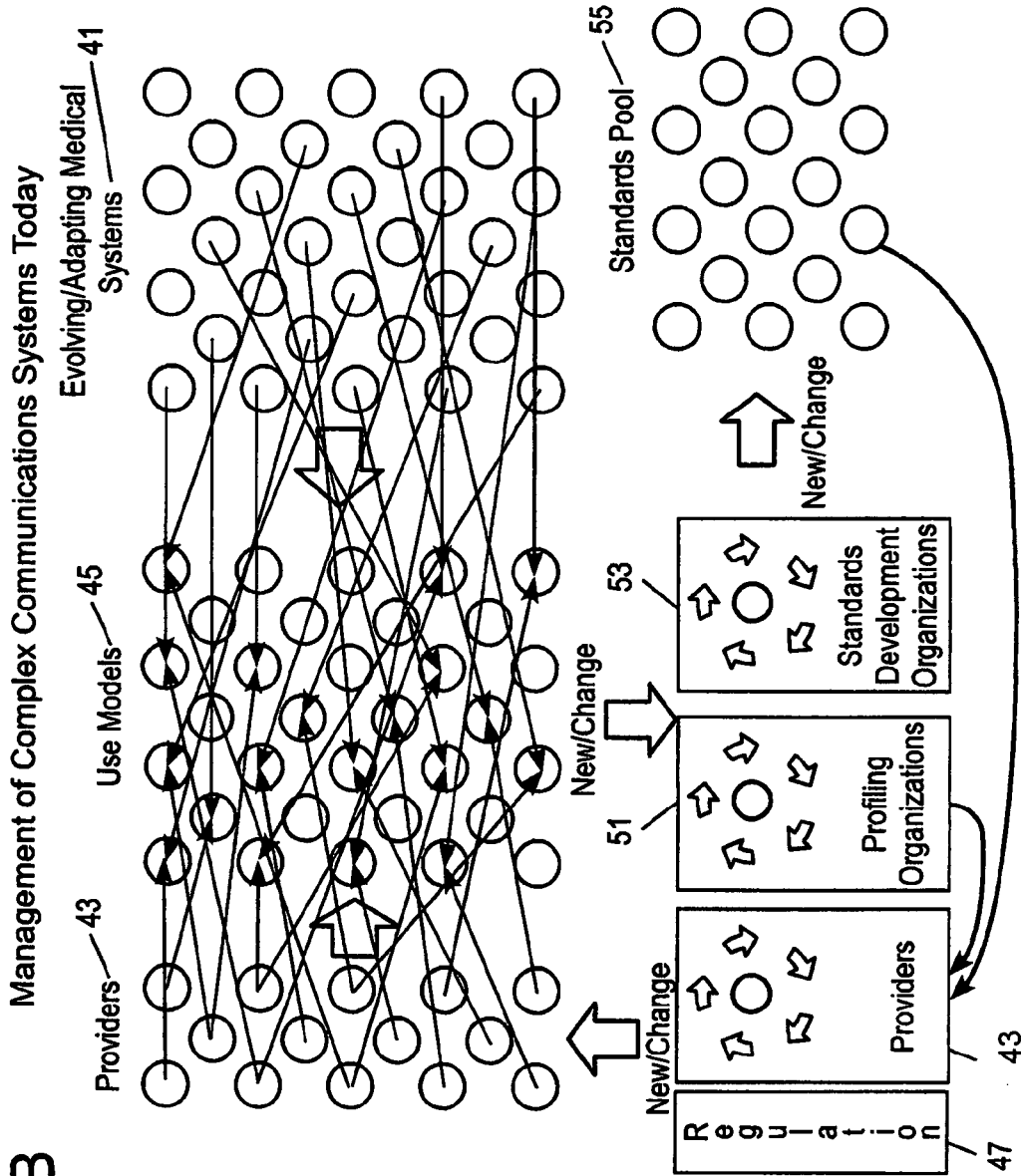


FIG. 1B



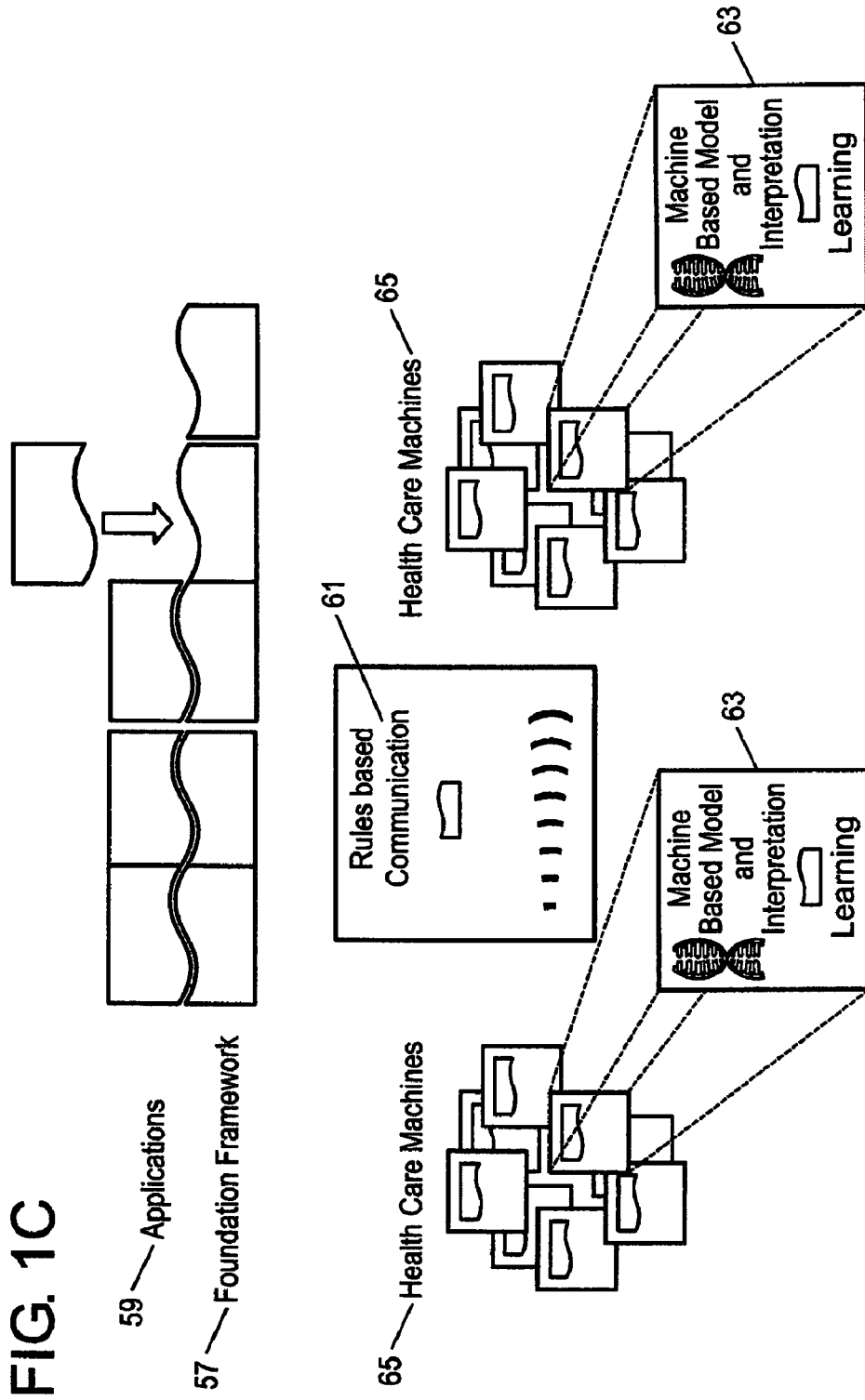


FIG. 1C

59 — Applications

57 — Foundation Framework

65 — Health Care Machines

61 — Rules based Communication

63 — Machine Based Model and Interpretation Learning

63 — Machine Based Model and Interpretation Learning

65 — Health Care Machines

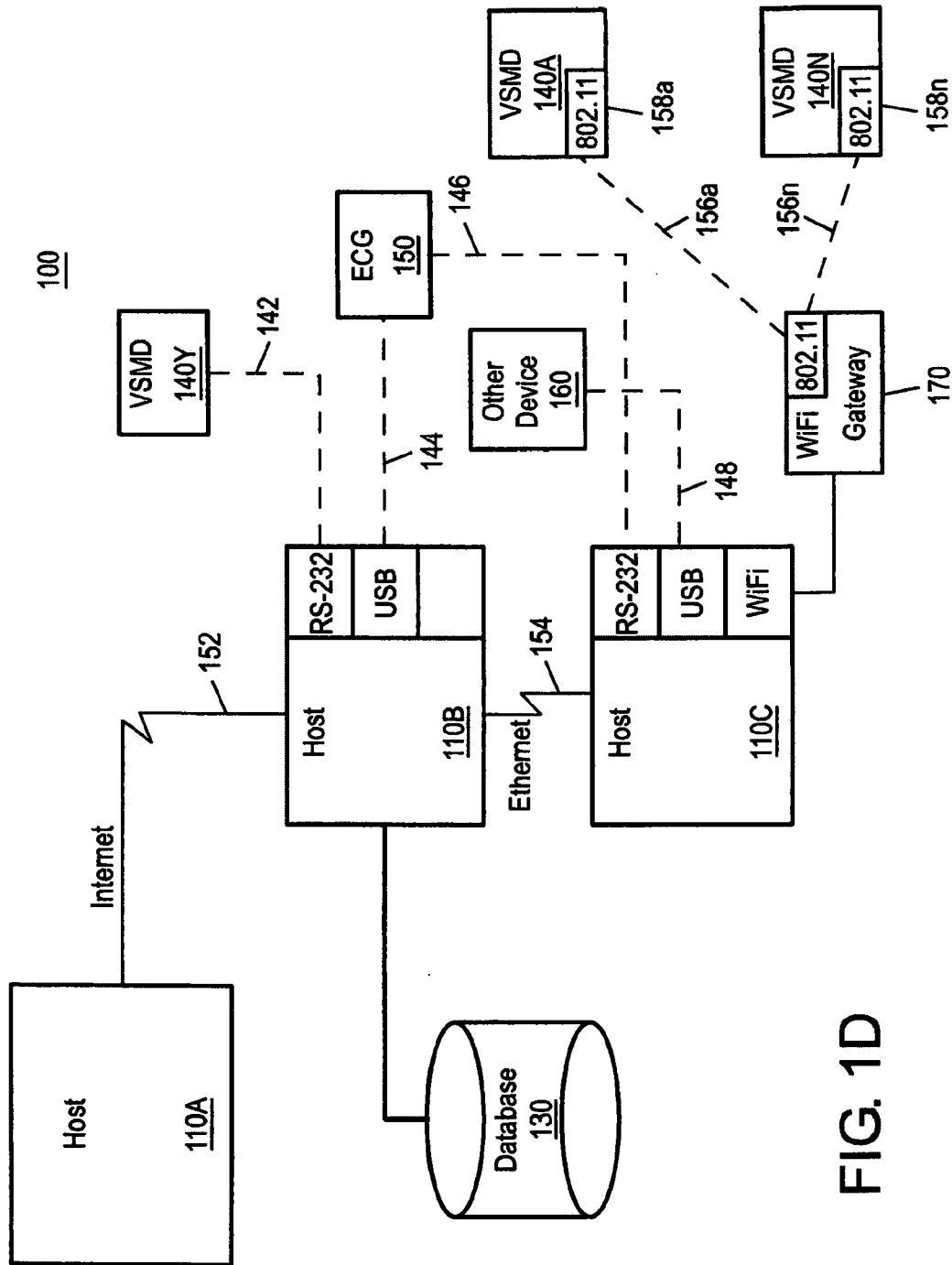


FIG. 1D

# Explore Litigation Insights

Docket Alarm provides insights to develop a more informed litigation strategy and the peace of mind of knowing you're on top of things.

## Real-Time Litigation Alerts



Keep your litigation team up-to-date with **real-time alerts** and advanced team management tools built for the enterprise, all while greatly reducing PACER spend.

Our comprehensive service means we can handle Federal, State, and Administrative courts across the country.

## Advanced Docket Research



With over 230 million records, Docket Alarm's cloud-native docket research platform finds what other services can't. Coverage includes Federal, State, plus PTAB, TTAB, ITC and NLRB decisions, all in one place.

Identify arguments that have been successful in the past with full text, pinpoint searching. Link to case law cited within any court document via Fastcase.

## Analytics At Your Fingertips



Learn what happened the last time a particular judge, opposing counsel or company faced cases similar to yours.

Advanced out-of-the-box PTAB and TTAB analytics are always at your fingertips.

## API

Docket Alarm offers a powerful API (application programming interface) to developers that want to integrate case filings into their apps.

## LAW FIRMS

Build custom dashboards for your attorneys and clients with live data direct from the court.

Automate many repetitive legal tasks like conflict checks, document management, and marketing.

## FINANCIAL INSTITUTIONS

Litigation and bankruptcy checks for companies and debtors.

## E-DISCOVERY AND LEGAL VENDORS

Sync your system to PACER to automate legal marketing.