



United States Patent [19]

[11] Patent Number: **5,716,377**

Rise et al.

[45] Date of Patent: **Feb. 10, 1998**

- [54] **METHOD OF TREATING MOVEMENT DISORDERS BY BRAIN STIMULATION**
- [75] Inventors: **Mark T. Rise, Monticello; Gary W. King, Fridley, both of Minn.**
- [73] Assignee: **Medtronic, Inc., Minneapolis, Minn.**
- [21] Appl. No.: **637,366**
- [22] Filed: **Apr. 25, 1996**
- [51] Int. Cl.⁶ **A61N 1/00**
- [52] U.S. Cl. **607/2**
- [58] Field of Search **607/1, 2, 3, 43, 607/45, 46, 6, 72**

[56] **References Cited**

U.S. PATENT DOCUMENTS

- 3,850,161 11/1974 Liss .
- 4,702,254 10/1987 Zabara .
- 4,867,164 9/1989 Zabara .
- 5,025,807 6/1991 Zabara .
- 5,293,879 3/1994 Vonk et al. .

OTHER PUBLICATIONS

Andy "Thalamic Stimulation for Control of Movement Disorders" *Applied Neurophysiology*, Dec. 83 pp. 107-111.

Benabid et al "Vim and STN stimulation in Parkinsons Disease" Abstracts of the Intl Congress of Movement Disorders, 1994 paper.

Capellos-Lefebure D. et al "Chronic thalamic stimulation improves tremors and levodope induced dyskinesics in Parkinson's disease" *J Neurol Neurosurg Psychiatry*, 1993, J6: 268-73.

van Horne et al., "Multichannel Semiconductor-Based Electrodes for In Vivo Electrochemical and Electrophysiological Studies in Rat CNS". *Neuroscience Letters*, 120, pp. 249-252 (1990).

Alexander et al., "Basal Ganglia-Thalamocortical Circuits: Parallel Substrates for Motor, Oculomotor, 'Prefrontal' and 'Limbic' Functions", *Progress in Brain Research*, vol. 85: 119-146 (1990).

Bergman et al., "Reversal of Experimental Parkinsonism by Lesions of the Subthalamic Nucleus", *Science*, vol. 249: 1436-1438 (Sep. 21, 1990).

Benabid et al., "Long term Suppression of Tremor by Cchronic Stimulation of the Ventral Intermediate Thalamic Nucleus", *The Lancet*, vol. 337: 403-406 (Feb. 16, 1991).

Limousin et al., "Effect on Parkinsonian Signs and Symptoms of Bilateral Subthalamic Nucleus Stimulation". *The Lancet*, vol. 345: 91-95 (Jan. 14, 1995).

Benabid et al., "Chronic Electrical Stimulation of the Ventralis Intermedius Nucleus of the Thalamus as a Treatment of Movement Disorders", *J. Neurosurg.*, vol. 84: pp. 203-214 (Feb. 1996).

Primary Examiner—William E. Kamm
Assistant Examiner—George R. Evanisko
Attorney, Agent, or Firm—Banner & Witcoff, Ltd.

[57] **ABSTRACT**

Techniques for stimulating the brain to treat movement disorders resulting in abnormal motor behavior by means of an implantable signal generator and electrode. A sensor is used to detect the symptoms resulting from the motion disorder. A microprocessor algorithm analyzes the output from the sensor in order to regulate the stimulation delivered to the brain.

18 Claims, 8 Drawing Sheets

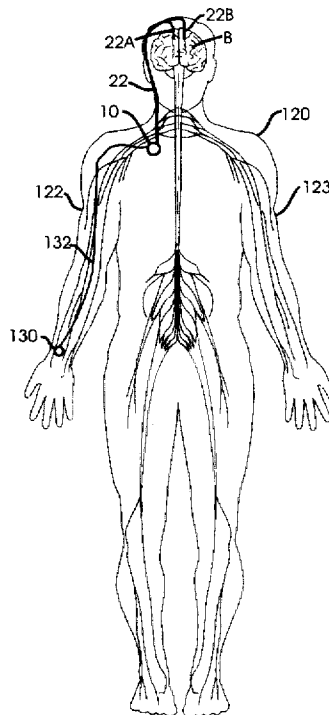


Fig. 1

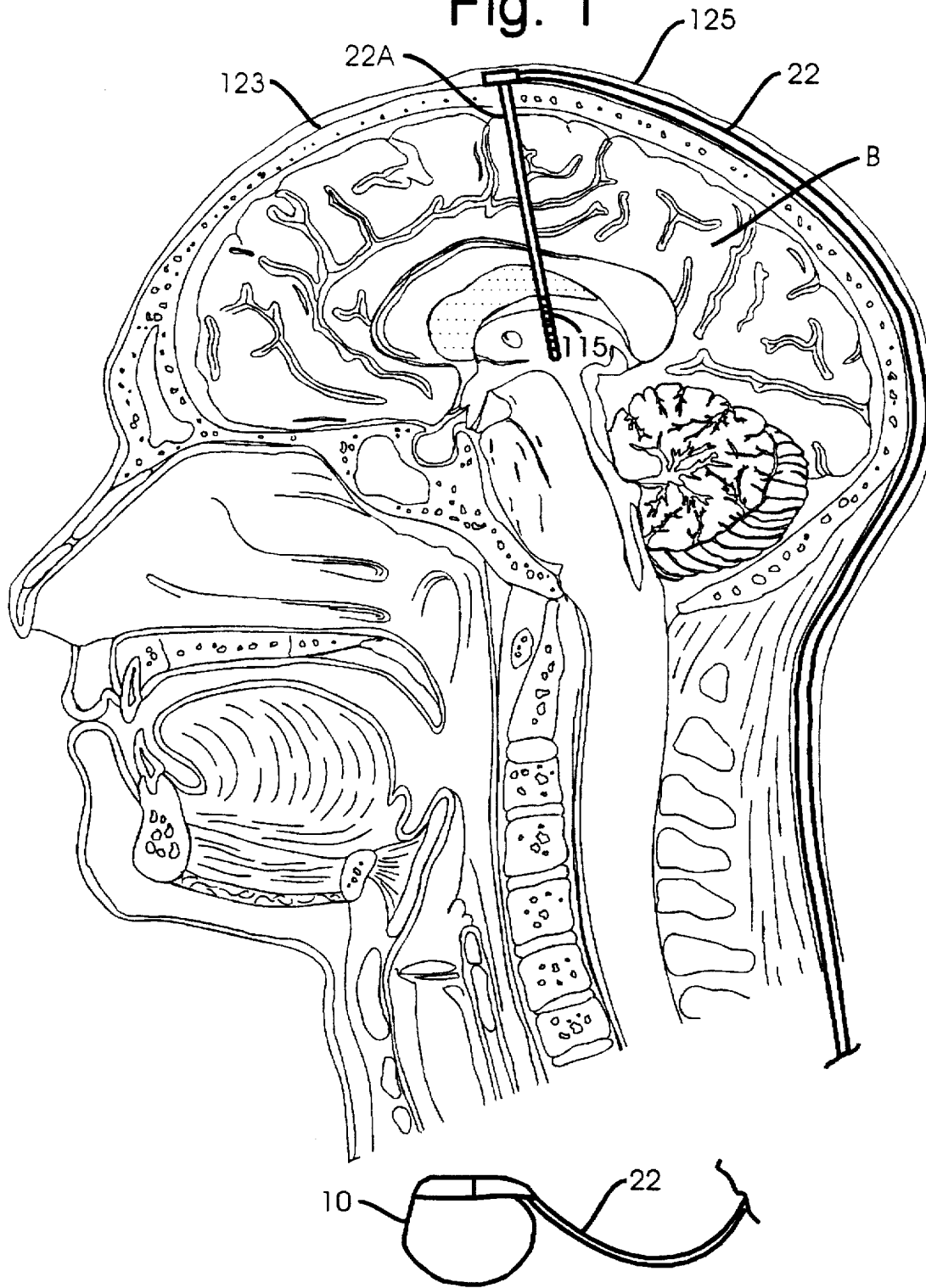


Fig. 2

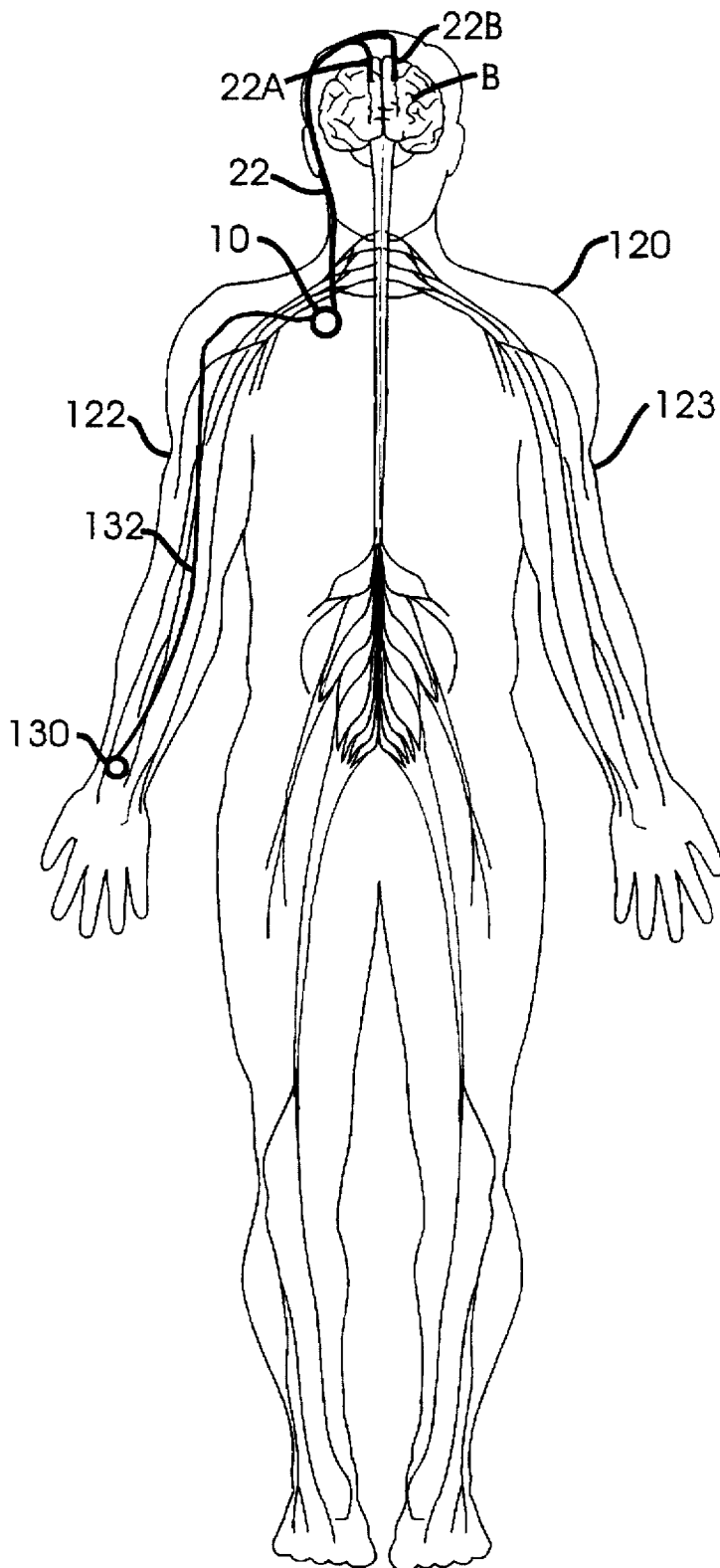


Fig. 3

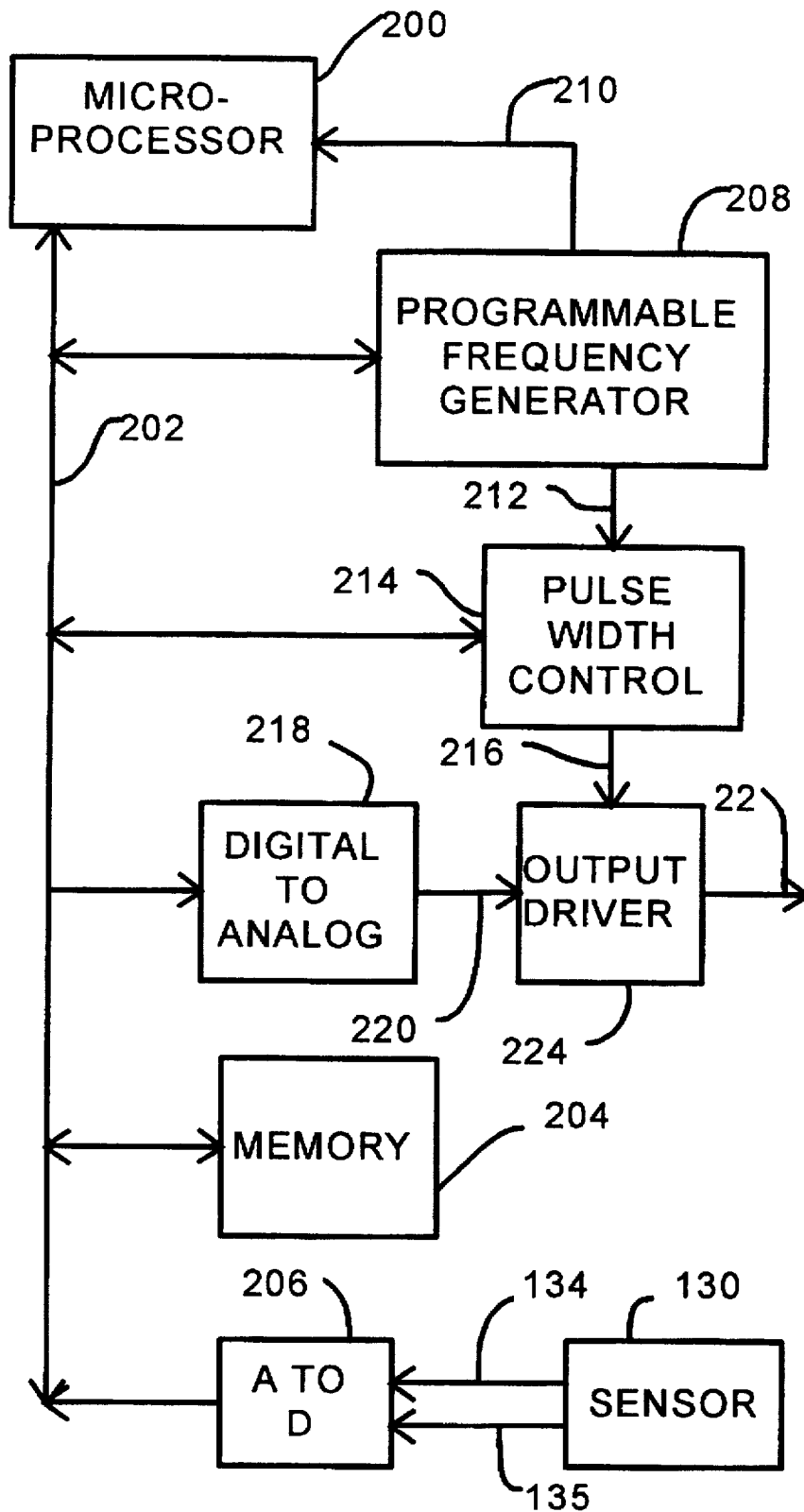
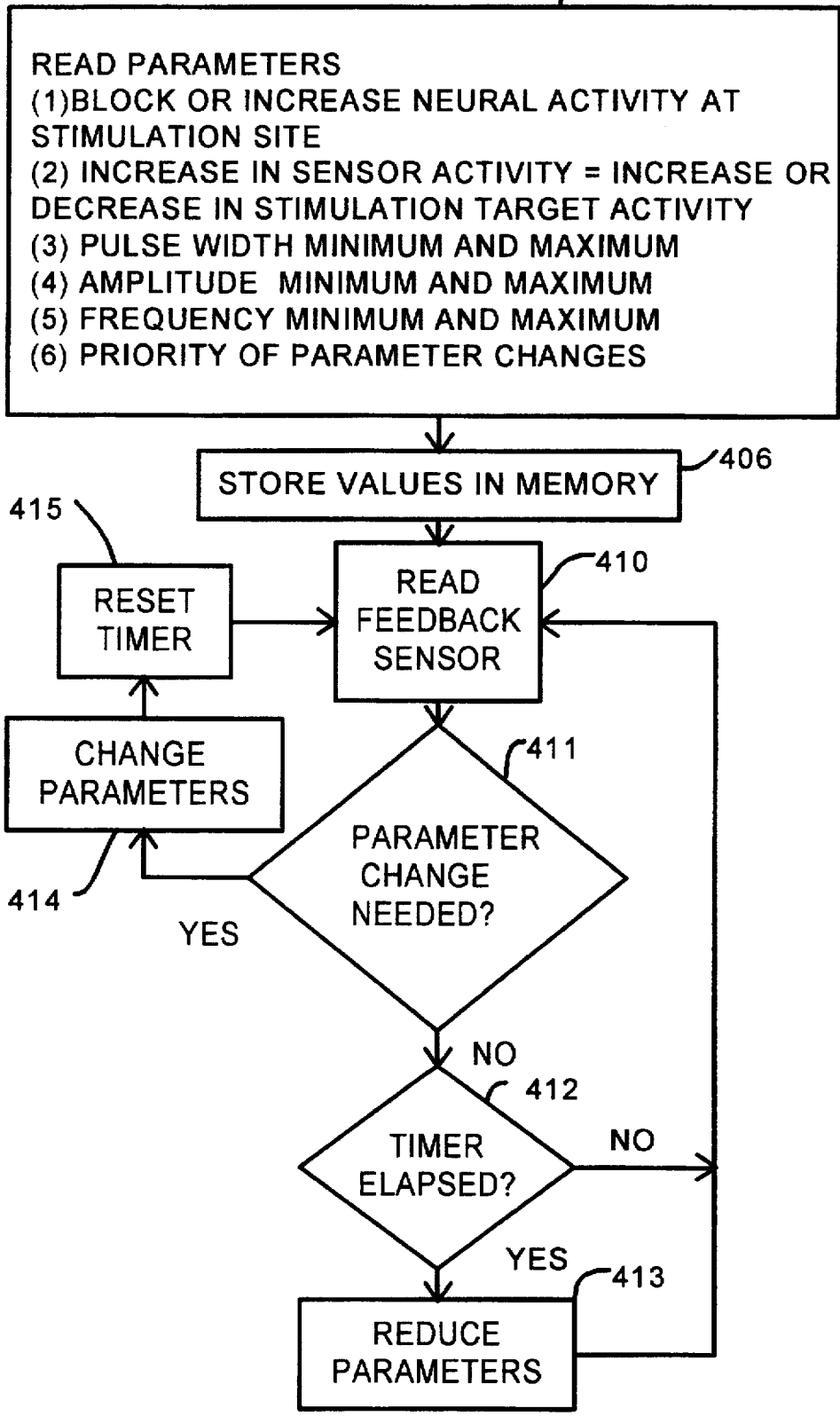


Fig. 4



Explore Litigation Insights

Docket Alarm provides insights to develop a more informed litigation strategy and the peace of mind of knowing you're on top of things.

Real-Time Litigation Alerts



Keep your litigation team up-to-date with **real-time alerts** and advanced team management tools built for the enterprise, all while greatly reducing PACER spend.

Our comprehensive service means we can handle Federal, State, and Administrative courts across the country.

Advanced Docket Research



With over 230 million records, Docket Alarm's cloud-native docket research platform finds what other services can't. Coverage includes Federal, State, plus PTAB, TTAB, ITC and NLRB decisions, all in one place.

Identify arguments that have been successful in the past with full text, pinpoint searching. Link to case law cited within any court document via Fastcase.

Analytics At Your Fingertips



Learn what happened the last time a particular judge, opposing counsel or company faced cases similar to yours.

Advanced out-of-the-box PTAB and TTAB analytics are always at your fingertips.

API

Docket Alarm offers a powerful API (application programming interface) to developers that want to integrate case filings into their apps.

LAW FIRMS

Build custom dashboards for your attorneys and clients with live data direct from the court.

Automate many repetitive legal tasks like conflict checks, document management, and marketing.

FINANCIAL INSTITUTIONS

Litigation and bankruptcy checks for companies and debtors.

E-DISCOVERY AND LEGAL VENDORS

Sync your system to PACER to automate legal marketing.