

www.archive.org
415.561.6767
415.840-0391 e-fax

Internet Archive
300 Funston Avenue
San Francisco, CA 94118

AFFIDAVIT OF CHRISTOPHER BUTLER

1. I am the Office Manager at the Internet Archive, located in San Francisco, California. I make this declaration of my own personal knowledge.

2. The Internet Archive is a website that provides access to a digital library of Internet sites and other cultural artifacts in digital form. Like a paper library, we provide free access to researchers, historians, scholars, and the general public. The Internet Archive has partnered with and receives support from various institutions, including the Library of Congress.

3. The Internet Archive has created a service known as the Wayback Machine. The Wayback Machine makes it possible to surf more than 450 billion pages stored in the Internet Archive's web archive. Visitors to the Wayback Machine can search archives by URL (i.e., a website address). If archived records for a URL are available, the visitor will be presented with a list of available dates. The visitor may select one of those dates, and then begin surfing on an archived version of the Web. The links on the archived files, when served by the Wayback Machine, point to other archived files (whether HTML pages or images). If a visitor clicks on a link on an archived page, the Wayback Machine will serve the archived file with the closest available date to the page upon which the link appeared and was clicked.

4. The archived data made viewable and browseable by the Wayback Machine is compiled using software programs known as crawlers, which surf the Web and automatically store copies of web files, preserving these files as they exist at the point of time of capture.

5. The Internet Archive assigns a URL on its site to the archived files in the format `http://web.archive.org/web/[Year in yyyy][Month in mm][Day in dd][Time code in hh:mm:ss]/[Archived URL]`. Thus, the Internet Archive URL `http://web.archive.org/web/19970126045828/http://www.archive.org/` would be the URL for the record of the Internet Archive home page HTML file (`http://www.archive.org/`) archived on January 26, 1997 at 4:58 a.m. and 28 seconds (1997/01/26 at 04:58:28). A web browser may be set such that a printout from it will display the URL of a web page in the printout's footer. The date assigned by the Internet Archive applies to the HTML file but not to image files linked therein. Thus images that appear on a page may not have been archived on the same date as the HTML file. Likewise, if a website is designed with "frames," the date assigned by the Internet Archive applies to the frameset as a whole, and not the individual pages within each frame.

6. Attached hereto as Exhibit A are true and accurate copies of printouts of the Internet Archive's records of the HTML files for the URLs and the dates specified in the footer of the printout.

7. I declare under penalty of perjury that the foregoing is true and correct.

DATE: 10/25/16

Christopher Butler

RPX Exhibit 1048
RPX - DAF

Exhibit A



Release Notes: RealAudio Player 2.0 for Windows

This documentation explains how to download, set up, and use the RealAudio Player; system and software requirements; configuration instructions for Web browsers; and instructions for solving possible problems. The software and documentation are provided to you in accordance with your [license agreement](#). If you encounter a problem with the Player and you cannot find the solution in these Release Notes, please refer to [Frequently Asked Questions](#).

About the RealAudio Player 2.0

There are two versions of the RealAudio Player for Windows. Version 1.0 has been providing a reliable interface for playing RealAudio files for several months. These release notes are intended for use with [Version 2.0](#). The RealAudio Player 2.0 for Windows has many exciting [new features](#).

The RealAudio Player 2.0 for Windows allows you to listen to live and pre-recorded RealAudio files over the Internet in real-time, without downloading. Simply click on a RealAudio link from a World Wide Web page, and your RealAudio Player will automatically open and play the file you have selected.

After you have clicked on an audio file, you can continue to use your Web browser while the RealAudio Player is playing. If you wish, you can minimize the Player while you use other applications. You can also choose to have the Player displayed in front of active applications. Either way, the Player will continue to play the selected audio file until the file is finished, or until it is stopped or paused, without interfering with the functionality of other programs.

There are two RealAudio 2.0 Players for Windows available:

- RealAudio 2.0 for Windows 95 and Windows NT. This is a RealAudio Player which has been optimized to work with 32-bit Windows.
- RealAudio 2.0 for Windows 3.1x. This is a RealAudio Player which runs under 16-bit Windows.

All RealAudio 2.0 Players can play two different algorithms:

- The 14.4 algorithm provides monophonic AM quality sound, and requires a 14.4 Kbps modem or faster connection to the Internet
- The 28.8 algorithm provides monophonic FM quality sound, and requires a 28.8 Kbps modem or faster connection to the Internet

To determine which algorithm can be supported by your system, check the [System Requirements](#) section in these release notes. The [RealAudio Player 2.0](#) is available from Progressive Networks' Web site.

To use your RealAudio Player, connect to a World Wide Web site that has RealAudio. The RealAudio Home Page is a good starting point. For a complete listing of all World Wide Web sites that feature RealAudio, including RealAudio 2.0 sites, see the [RealAudio Guide](#).

To set up your RealAudio 2.0 Player, follow the instructions in the [Quick Start](#) section.

To find out more about how the RealAudio System provides real-time audio delivery on demand, please read [The RealAudio File Delivery Process](#). If you need help, or find a problem, please see our [support pages](#).

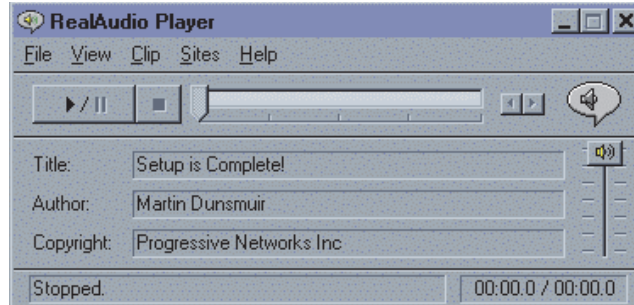
Continue to [Quick Start](#)

[Main Help Page](#) • [Support Request](#) • [RealAudio Home Page](#)

[Copyright](#) © Progressive Networks, 1996, all rights reserved. [RealAudio](#) is a trademark of [Progressive Networks](#).

RealAudio Player Controls

To use the RealAudio Player, click on any RealAudio link on a World Wide Web page. Your Player should open and play automatically.



Player Window



Play/Pause

RealAudio clips start playing automatically when you link to a clip from a Web page. You can pause a clip for approximately two minutes before the RealAudio Server terminates your connection. The Play and Pause commands are also available from the shortcut menu that appears when you click the right mouse button anywhere in the Player window.



Stop

Stops the clip. Stop can also be executed from the shortcut menu.



FF/Rewind

Fast Forwards or Rewinds the RealAudio clip in 10 second intervals.



Volume

Changes the volume of the clip.



Home Button

Shows when the Player is connecting to a RealAudio Server (the speaker spins), when the Player is playing a RealAudio file (the speaker shows animated sound waves), and when the Player is attempting to play a RealAudio file, but is encountering high data loss (a lightning bolt comes from the speaker). Clicking on the Home Button takes you to the [RealAudio Home Page](#).

Status Bar

The current state of the Player is displayed in the status bar at the bottom of the Player. The following messages will display:

- **Buffering.** When you connect to a link on a Web page, the audio stream received by the Player will collect in the buffer (holding area) until enough packets arrive to start playing the audio stream. This takes only a few seconds.
- **(Clip x of y).** When the RealAudio Player has been told to play more than one RealAudio (.ra) file in a row, you will be told how many total clips are to be played, and what clip number you are on.
- **Stopped.** This indicates the audio has stopped, either because you selected the stop button, or because the end of the clip has been reached.
- **Paused.** This indicates the audio has paused because you selected the pause button.

Explore Litigation Insights

Docket Alarm provides insights to develop a more informed litigation strategy and the peace of mind of knowing you're on top of things.

Real-Time Litigation Alerts



Keep your litigation team up-to-date with **real-time alerts** and advanced team management tools built for the enterprise, all while greatly reducing PACER spend.

Our comprehensive service means we can handle Federal, State, and Administrative courts across the country.

Advanced Docket Research



With over 230 million records, Docket Alarm's cloud-native docket research platform finds what other services can't. Coverage includes Federal, State, plus PTAB, TTAB, ITC and NLRB decisions, all in one place.

Identify arguments that have been successful in the past with full text, pinpoint searching. Link to case law cited within any court document via Fastcase.

Analytics At Your Fingertips



Learn what happened the last time a particular judge, opposing counsel or company faced cases similar to yours.

Advanced out-of-the-box PTAB and TTAB analytics are always at your fingertips.

API

Docket Alarm offers a powerful API (application programming interface) to developers that want to integrate case filings into their apps.

LAW FIRMS

Build custom dashboards for your attorneys and clients with live data direct from the court.

Automate many repetitive legal tasks like conflict checks, document management, and marketing.

FINANCIAL INSTITUTIONS

Litigation and bankruptcy checks for companies and debtors.

E-DISCOVERY AND LEGAL VENDORS

Sync your system to PACER to automate legal marketing.