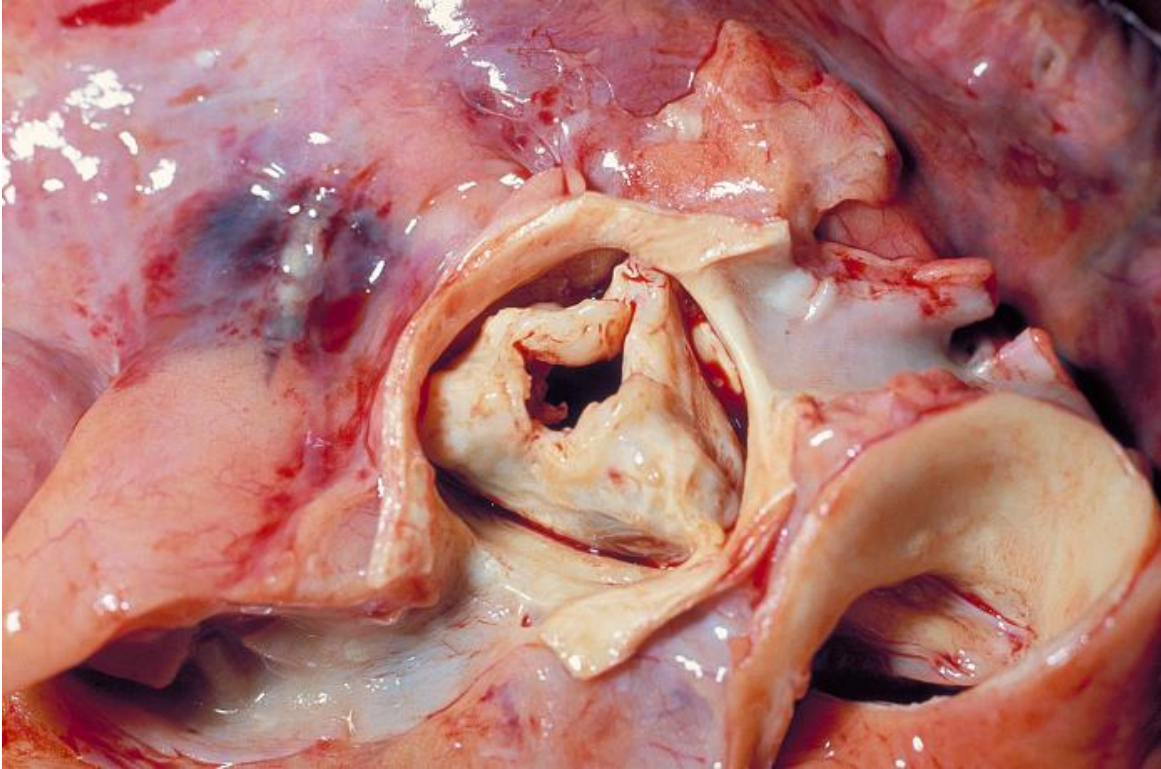


Details

[Return \(javascript:document.form1.submit\(\);\)](#)



| | |
|------------------------------|--|
| ID#: | 848 |
| Description: | Gross pathology of rheumatic heart disease: aortic stenosis. Aorta has been removed to show thickened, fused aortic valve leaflets and opened coronary arteries from above. Auto |
| High Resolution: | Right click here and select "Save Target As..." for hi-resolution image (15.61 MB) (download.asp) |
| Content Providers(s): | CDC/ Dr. Edwin P. Ewing, Jr. |
| Creation Date: | 1973 |
| Photo Credit: | |
| Links: | |

Categories:

CDC Organization

MeSH

- └ [Anatomy \(javascript:document.form2.submit\(\);\)](#)
 - └ [Cardiovascular System \(javascript:document.form2.submit\(\);\)](#)
 - └ **[Heart \(javascript:document.form2.submit\(\);\)](#)**
 - └ [Diseases \(javascript:document.form2.submit\(\);\)](#)
 - └ [Bacterial Infections and Mycoses \(javascript:document.form2.submit\(\);\)](#)
 - └ [Bacterial Infections \(javascript:document.form2.submit\(\);\)](#)
 - └ [Gram-Positive Bacterial Infections \(javascript:document.form2.submit\(\);\)](#)
 - └ [Streptococcal Infections \(javascript:document.form2.submit\(\);\)](#)
 - └ [Rheumatic Fever \(javascript:document.form2.submit\(\);\)](#)
 - └ **[Rheumatic Heart Disease \(javascript:document.form2.submit\(\);\)](#)**
- └ [Cardiovascular Diseases \(javascript:document.form2.submit\(\);\)](#)
 - └ [Heart Diseases \(javascript:document.form2.submit\(\);\)](#)
 - └ **[Rheumatic Heart Disease \(javascript:document.form2.submit\(\);\)](#)**

Copyright Restrictions:

None - This image is in the public domain and thus free of any copyright restrictions. As a matter of courtesy we request content provider be credited and notified in any public or private usage of this image.

 Add to My Pictures

[Back to results \(javascript:document.form1.submit\(\);\)](#)

Page last reviewed: November 4, 2016

Page last updated: November 4, 2016

Content source: Centers for Disease Control and Prevention (<https://www.cdc.gov/>), Office of the Associate Director for Communications, Division of Public Affairs (/)