



Ex-vivo experiment

Edwards Lifesciences

Left atrium support

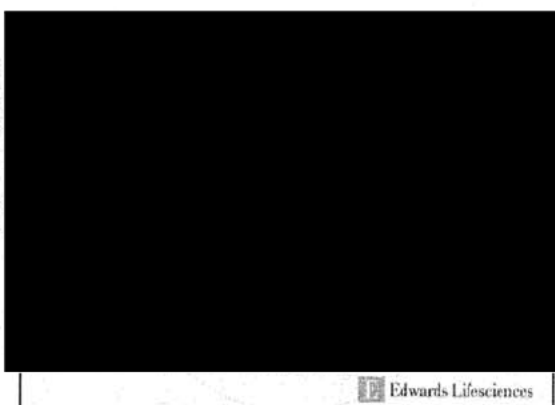
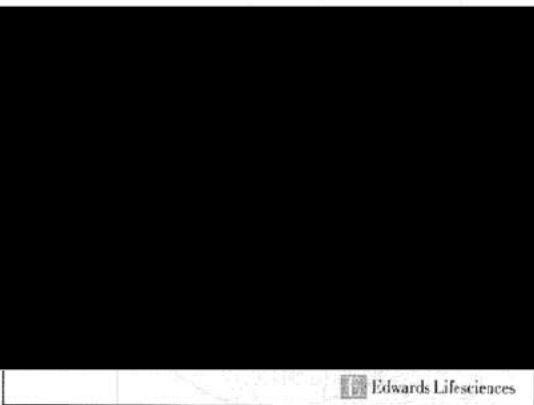
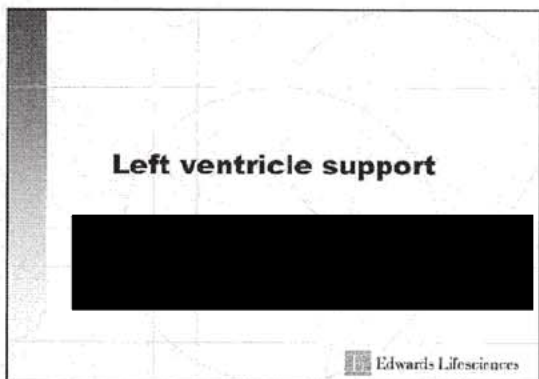
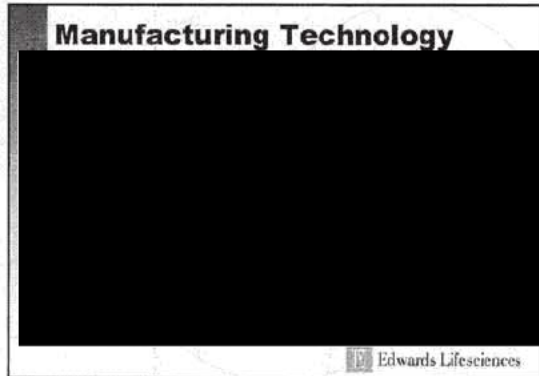
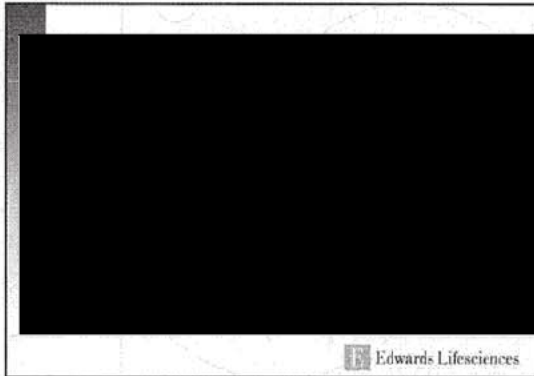
Edwards Lifesciences

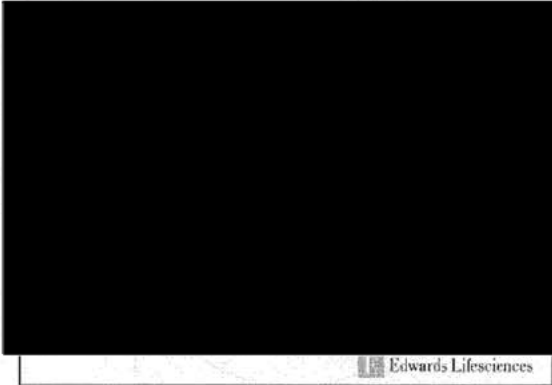
Device support options

Edwards Lifesciences

Edwards Lifesciences

Edwards Lifesciences

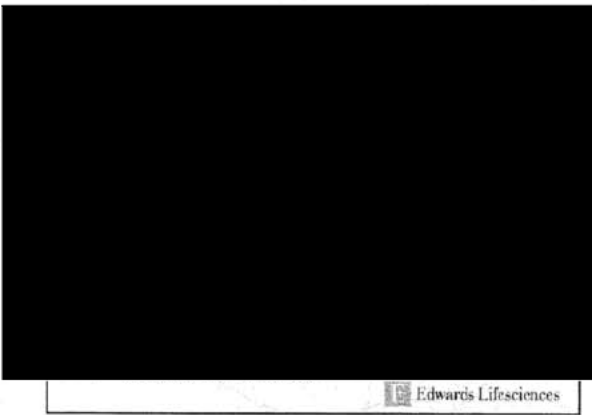




**Requirements
(Simulator and valve fixture)**

A large black rectangular redaction box covers the main content of the slide, obscuring any text or diagrams that might have been present.

Functionality simulator

A faint, light-colored diagram of a valve fixture is visible in the background of the slide. The diagram shows a circular component with various internal structures and ports.

Pilot animal trial objectives

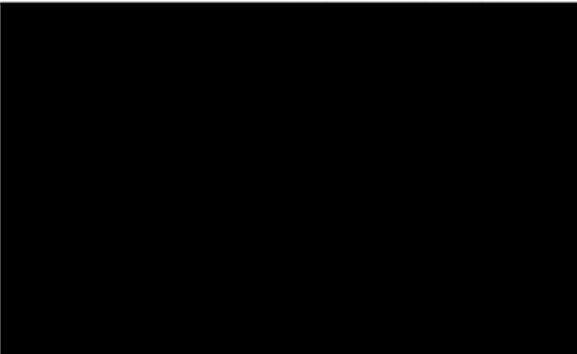


Edwards Lifesciences

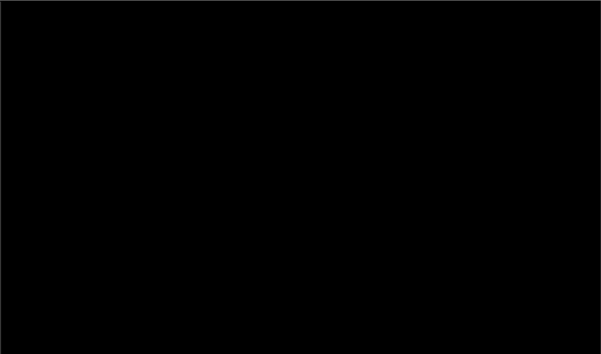
Simulator tests summary



LV Paravalve is the leading concept
Edwards Lifesciences



Edwards Lifesciences




Edwards Lifesciences

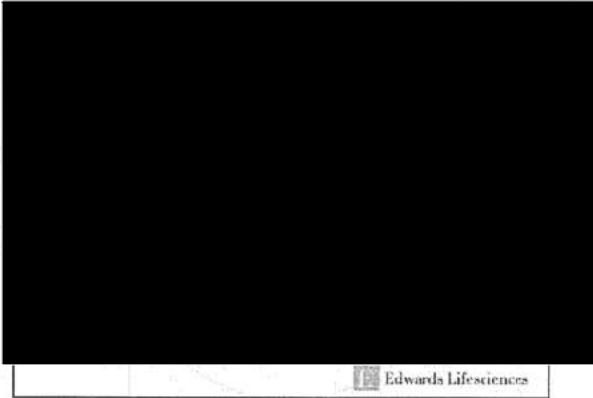
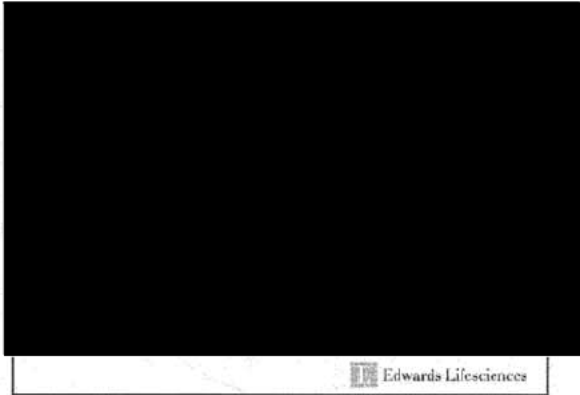
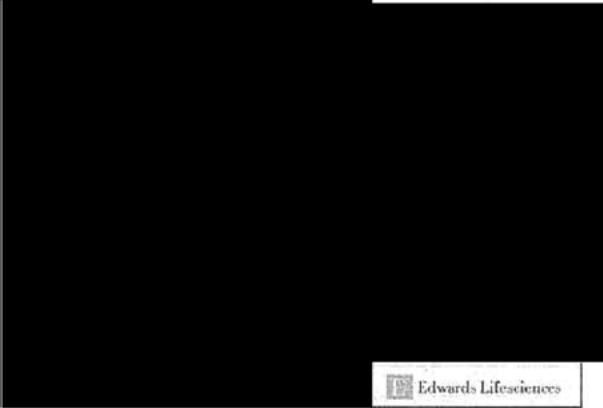
Full device deployment



Edwards Lifesciences



Edwards Lifesciences



Pilot animal study results

A large black rectangular redaction covering the content of the slide titled "Pilot animal study results". The Edwards Lifesciences logo is visible in the bottom right corner.

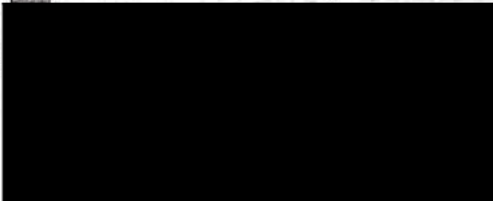
Next Steps

A large black rectangular redaction covering the content of the slide titled "Next Steps". The Edwards Lifesciences logo is visible in the bottom right corner.

Feasibility Tests Status

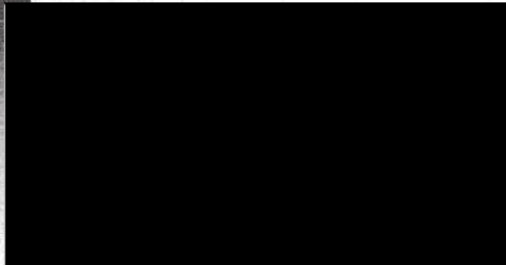
A large black rectangular redaction covering the content of the slide titled "Feasibility Tests Status". The Edwards Lifesciences logo is visible in the bottom right corner.

Updated Schedule




Edwards Lifesciences

Team

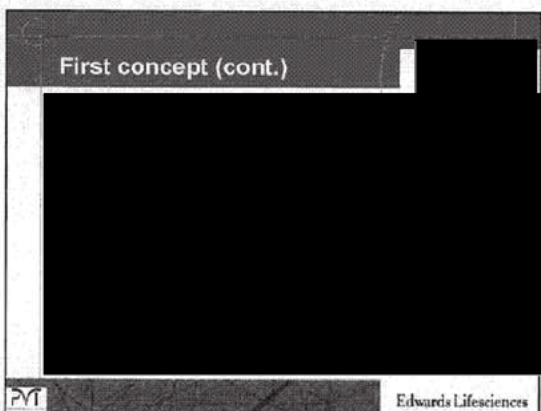
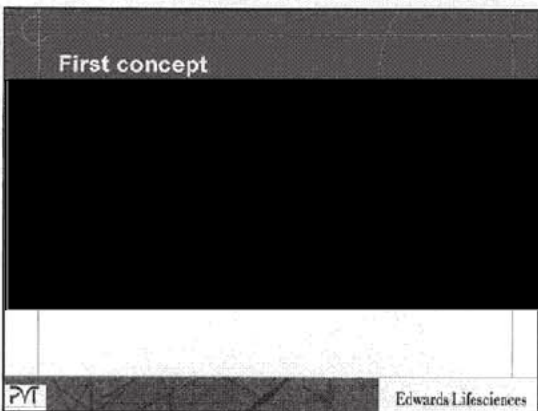
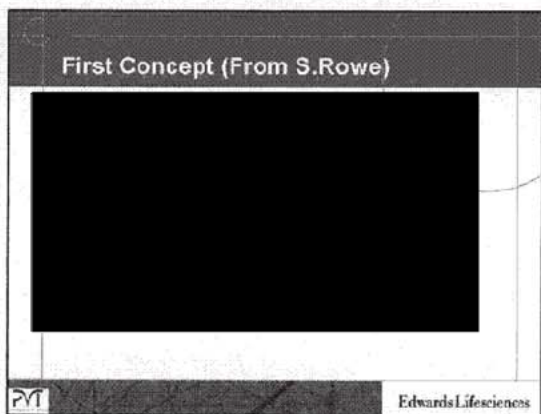
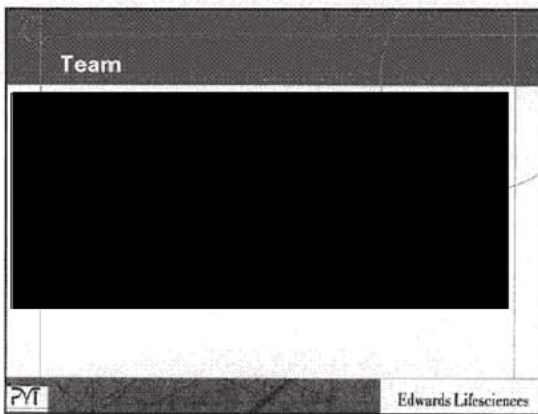
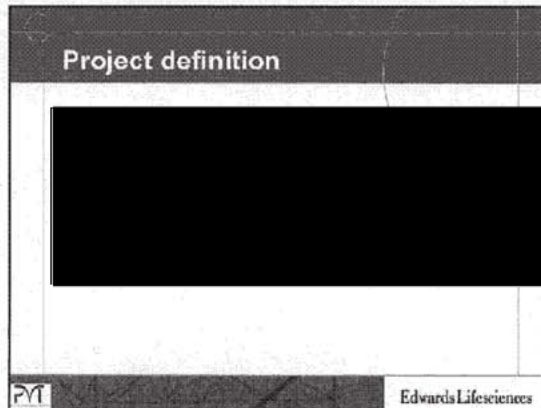
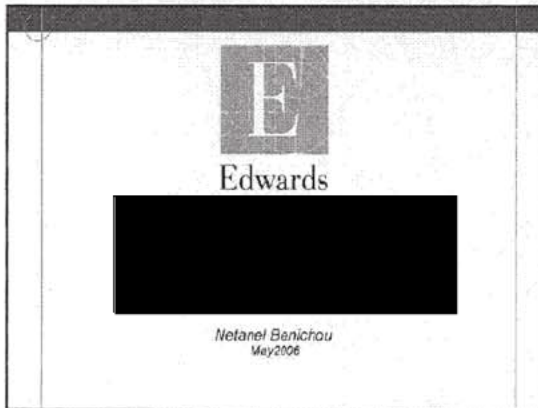


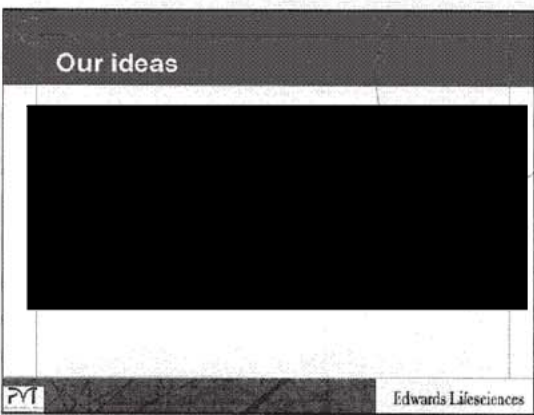
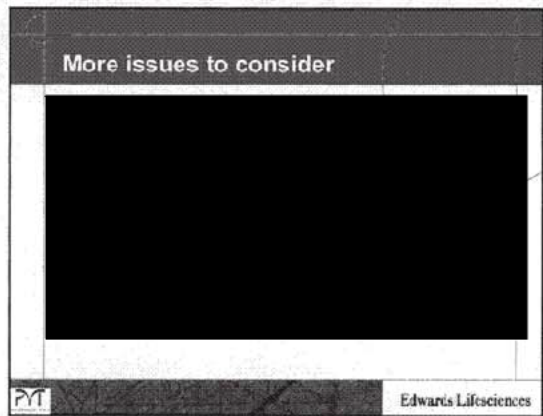
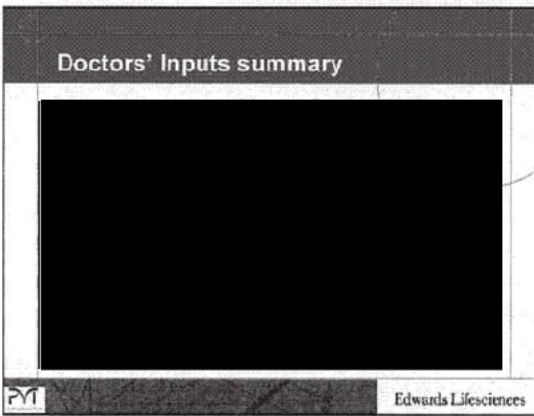
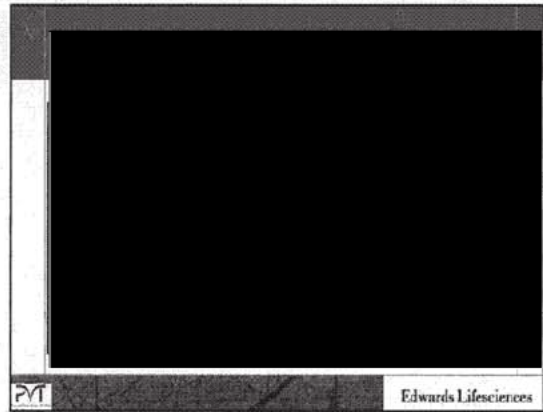
Edwards Lifesciences

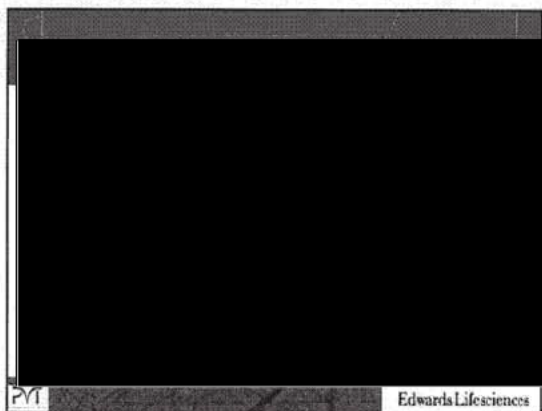
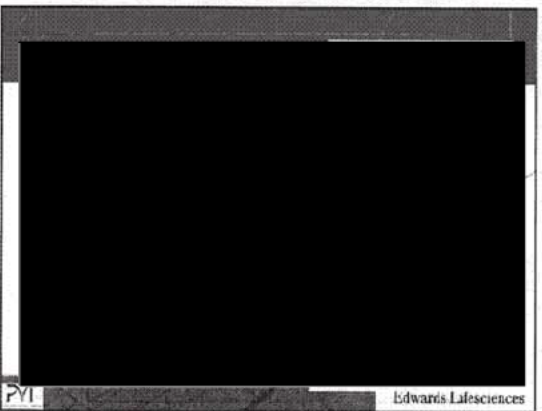
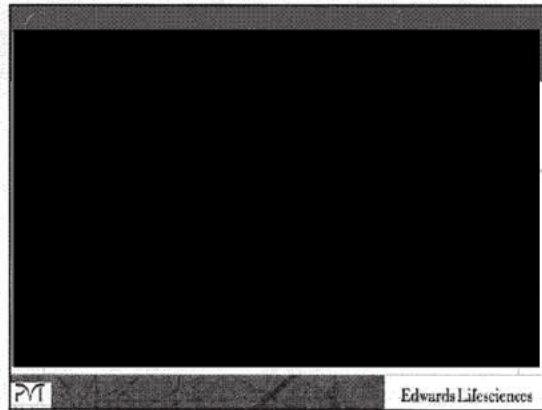


Edwards


Helping Patients is Our Life's Work, and *life is now*









1st concept phase decisions and results



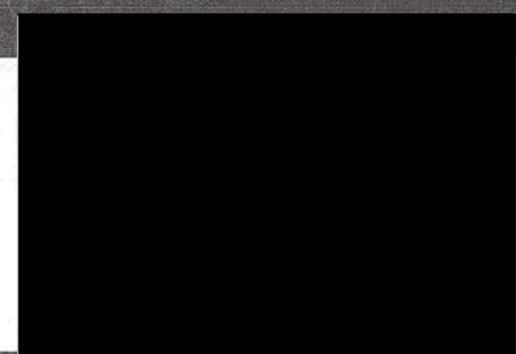
PT Edwards Lifesciences



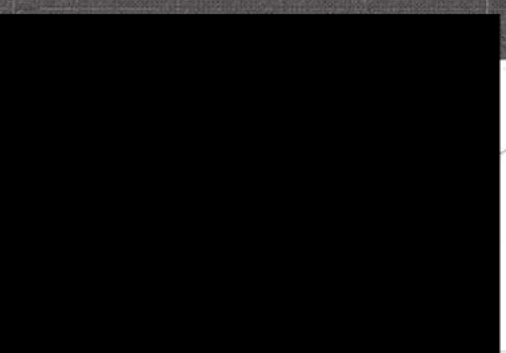
PT Edwards Lifesciences



PT Edwards Lifesciences

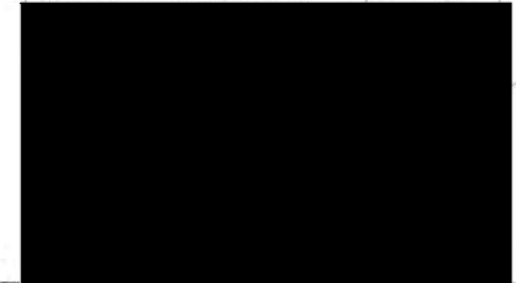


PT Edwards Lifesciences

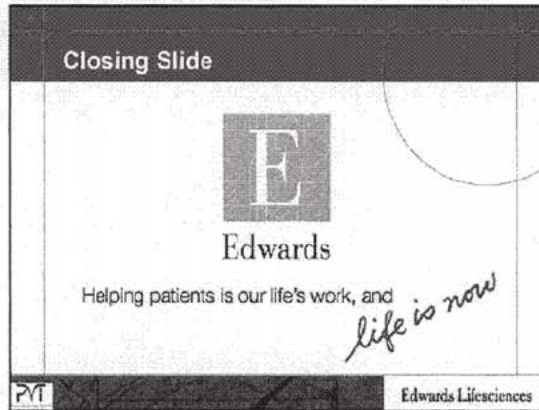
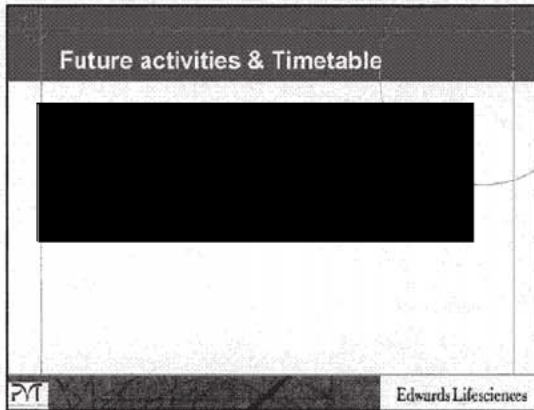




PT Edwards Lifesciences



More issues to complete feasibility

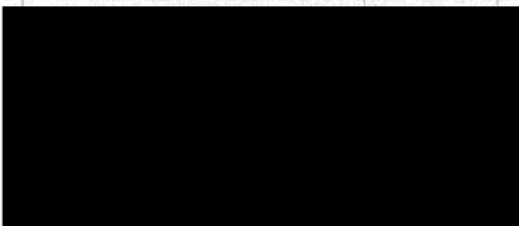



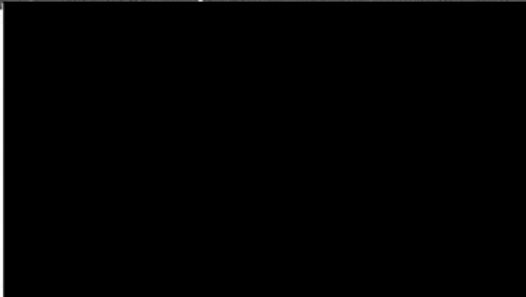
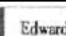
PT Edwards Lifesciences


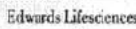



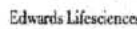

Edwards

Project Status
Itai Pelled
May 2006

Background


Edwards Lifesciences


Objectives


Edwards Lifesciences

Technical requirements


Edwards Lifesciences

Development process


Edwards Lifesciences


Development process (cont)


Edwards Lifesciences

Development process (cont)




Edwards Lifesciences

Interim Device



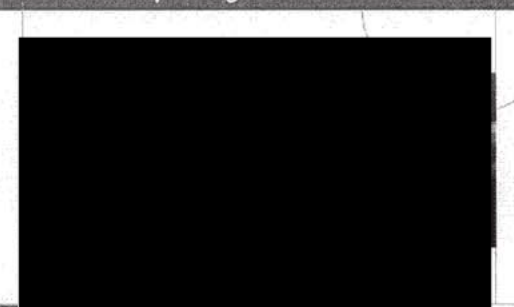
Edwards Lifesciences

Phased Approach



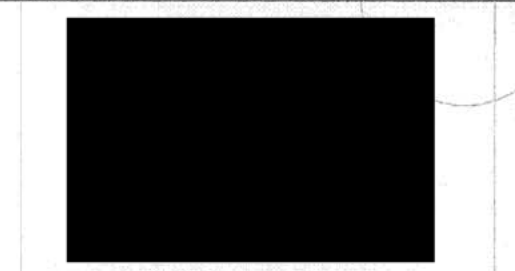
Edwards Lifesciences

New Grip Design




Edwards Lifesciences

New Grip Design (Cont.)

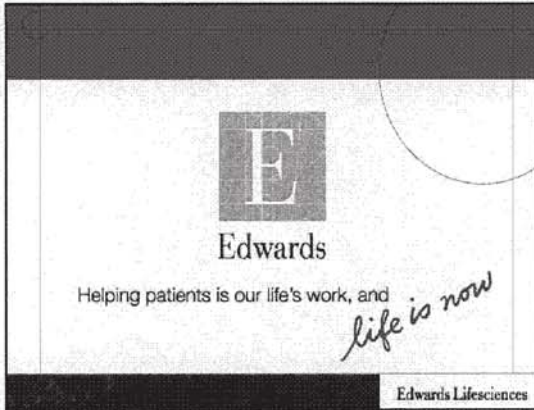


Edwards Lifesciences

Proposed Schedule

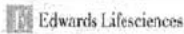


Edwards Lifesciences

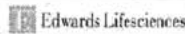
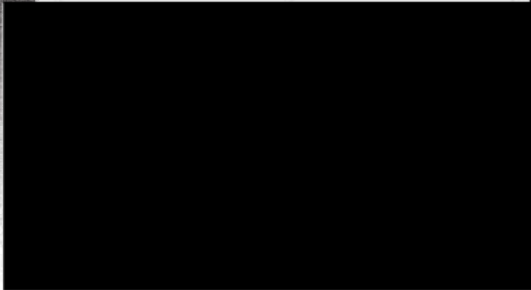


**ELS IL Role
as an
R&D Center**

Yaron Keidar
May 2006



Our Vision



Our Mission



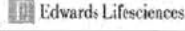

Organizational Chart





Our Competencies



Examples:





Relationship Models



Edwards Lifesciences

Key Success Factors



Edwards Lifesciences

Customer Commitment



Edwards Lifesciences

Design Transfer Improvement Project

Assaf Bash / Laksen Sirimane
May 2006



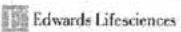
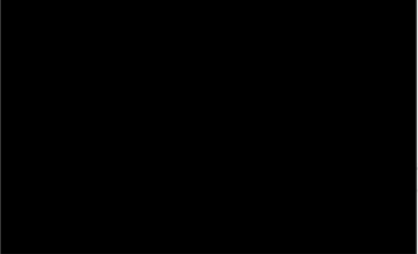
Edwards Lifesciences

Design Transfer Project Objective




Edwards Lifesciences

Project Team

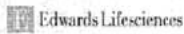


Edwards Lifesciences



Project Outline




Target: Q4/2006





Today's Structure





Proposed Structure



Activities & Schedule

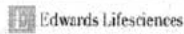


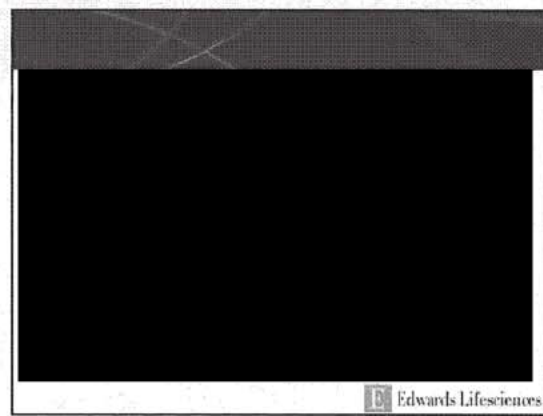
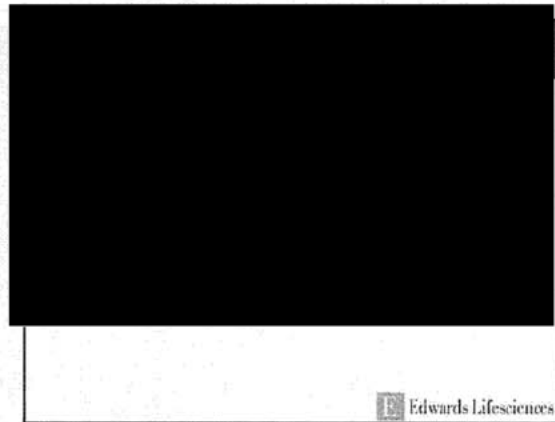
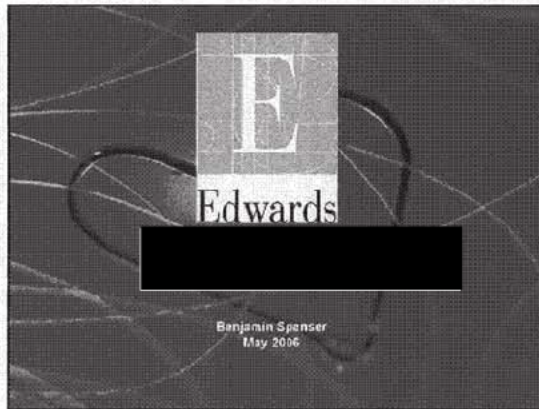
Seamless Transfer
= No Headache
= More Projects



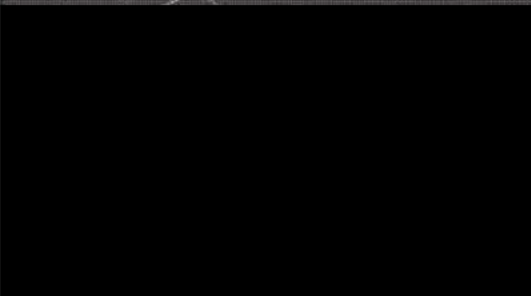
Edwards

Helping patients is our life's work, and
life is now



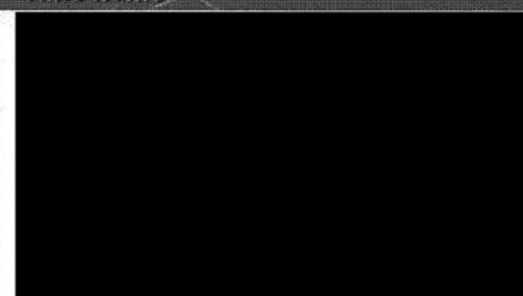


Logistic plan



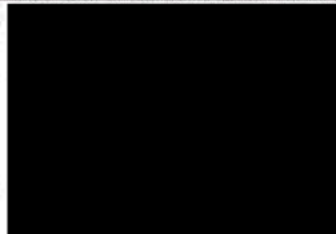

Edwards Lifesciences

Time frame




Edwards Lifesciences

Work to be done in Irvine



Edwards Lifesciences

Qualification tests





Edwards Lifesciences

Regulatory and Clinical plan

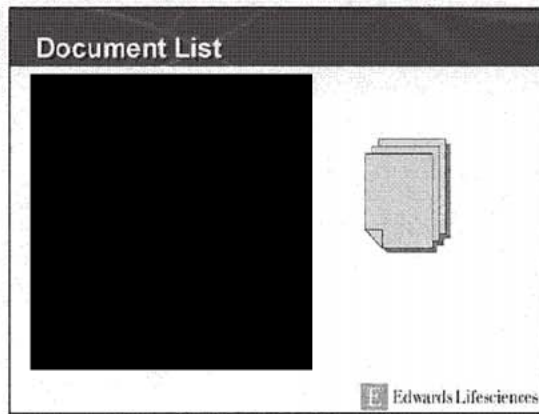
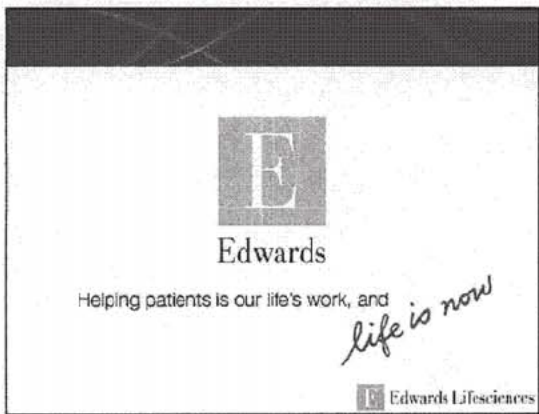
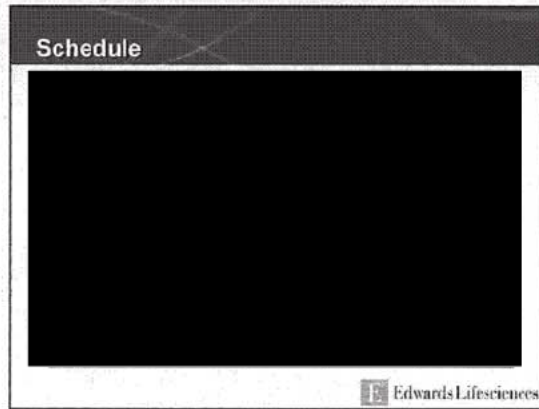
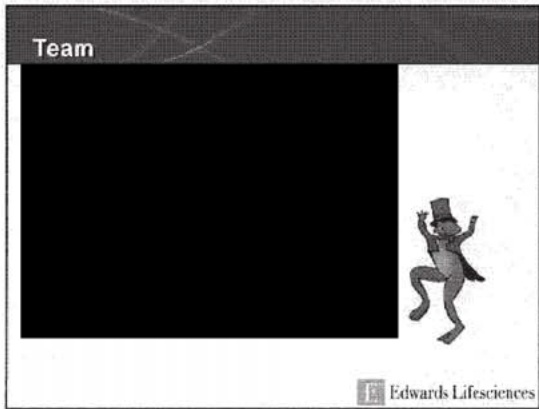



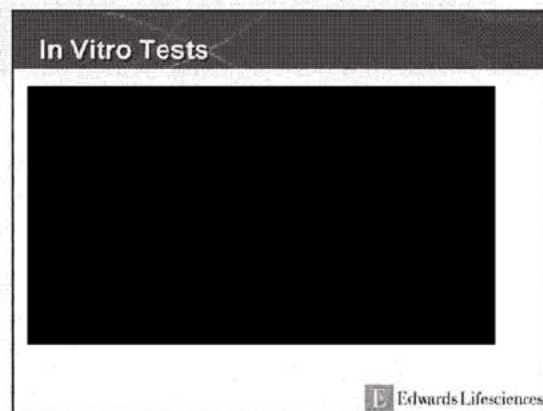
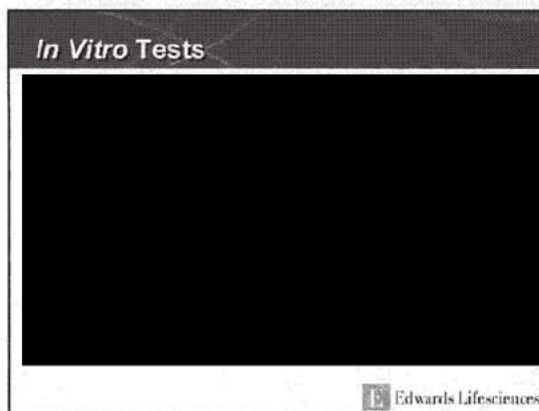
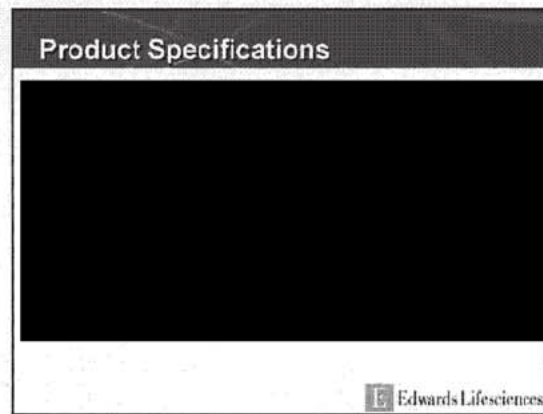
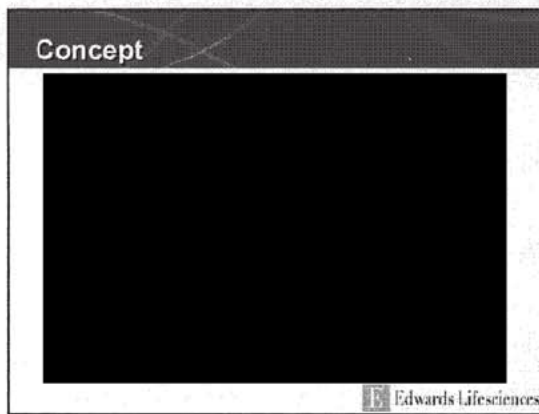
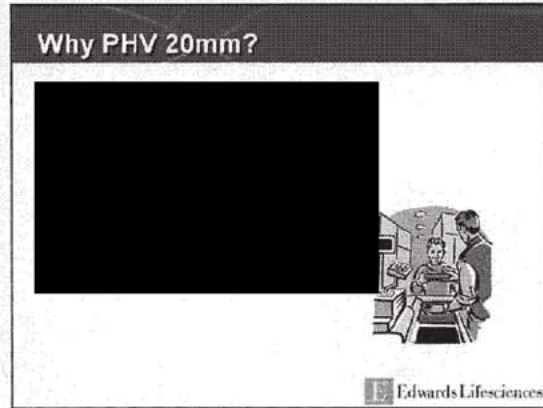
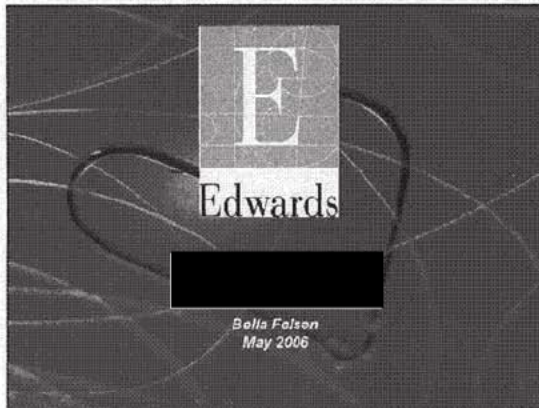
Edwards Lifesciences

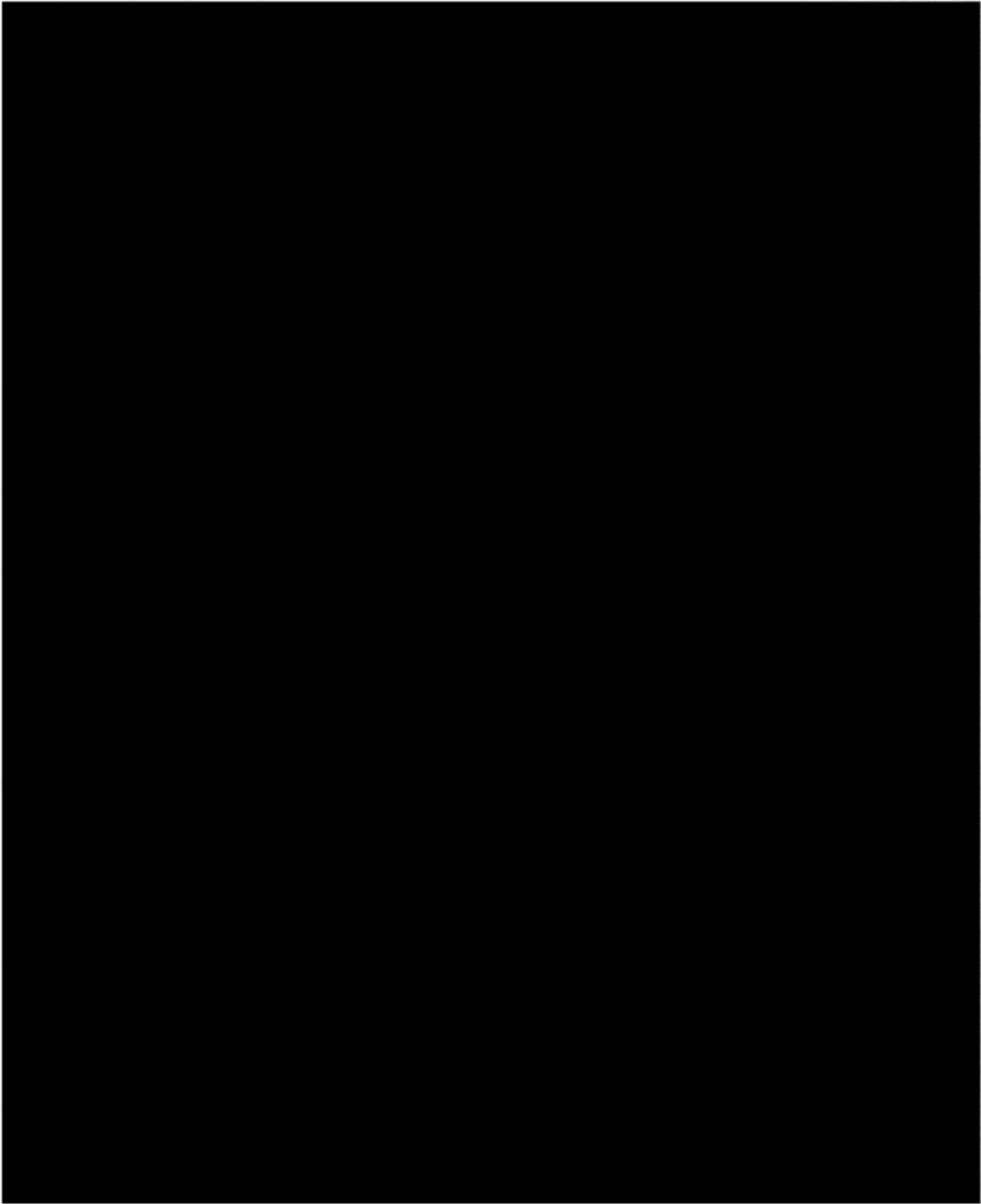
Cost update


Edwards Lifesciences







In Vitro Preliminary Results




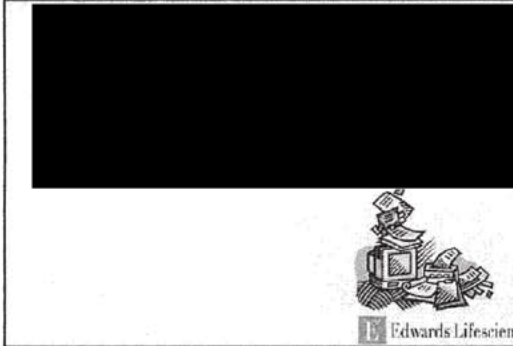
Edwards Lifesciences

In Vivo




Edwards Lifesciences

Regulatory and Clinical Plan



Edwards Lifesciences

Status



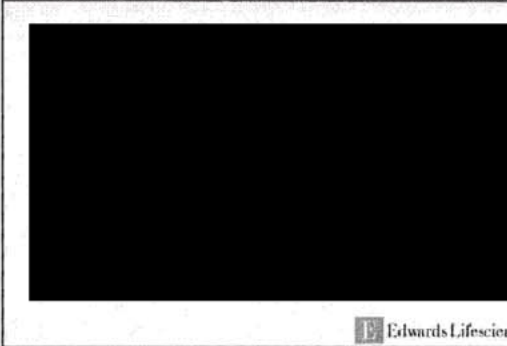
Edwards Lifesciences

Open Issues



Edwards Lifesciences

Team



Edwards Lifesciences

