

[54] MICRO-PROGRAMMABLE SECURITY SYSTEM

[75] Inventor: Paul K. Severson, Richfield, Minn.

[73] Assignee: Interactive Technologies, Inc., St. Paul, Minn.

[21] Appl. No.: 156,547

[22] Filed: Feb. 16, 1988

[51] Int. Cl.⁵ G08B 29/00

[52] U.S. Cl. 340/506; 340/531; 340/539; 340/532; 340/533; 340/534

[58] Field of Search 340/506, 531, 532, 533, 340/539, 825.06, 825.69; 379/37, 39, 40, 51

[56] References Cited

U.S. PATENT DOCUMENTS

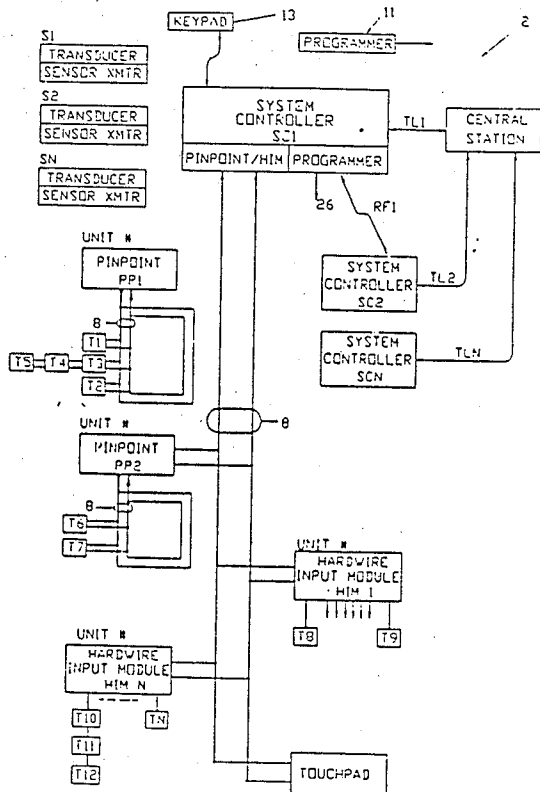
3,927,404	12/1975	Cooper .	
4,361,832	11/1982	Cole	340/506
4,392,125	7/1983	Iwata	340/505
4,400,694	8/1983	Wong et al.	340/505
4,523,184	6/1985	Abel	340/531
4,581,606	4/1986	Mallory	340/505
4,660,024	4/1987	McMaster	340/506
4,688,183	8/1987	Caril et al.	340/506
4,692,742	9/1987	Raizen et al.	340/531
4,737,770	4/1988	Brunius et al.	340/506
4,749,985	6/1988	Corsberg	340/506

Primary Examiner—Donnie L. Crosland
Attorney, Agent, or Firm—Douglas L. Tschida

[57] ABSTRACT

A security alarm network including a plurality of micro-processor-based, subscriber system controllers, wherein each controller is capable of responding to a plurality of distributed wireless and hardwired sensors/transducers and is programmable via user, central station and install-er-entered system and network parameters. Each system controller is operable to (a) monitor neighbor system communications and system identification data; (b) maintain a central station programmable identification listing of neighboring systems and, if communication malfunctions occur, communicate with the central station via one or more cooperating neighbor controllers; (c) self-learn the identification data of its distributed sensors; (d) maintain operator and central station-accessible event histories; (e) self-confirm predetermined emergency conditions; (f) regulate communications with the central station relative to pre-programmed, grouped, arming level dependent responses and system parameters; and (g) enable audible monitoring by the central station.

27 Claims, 18 Drawing Sheets



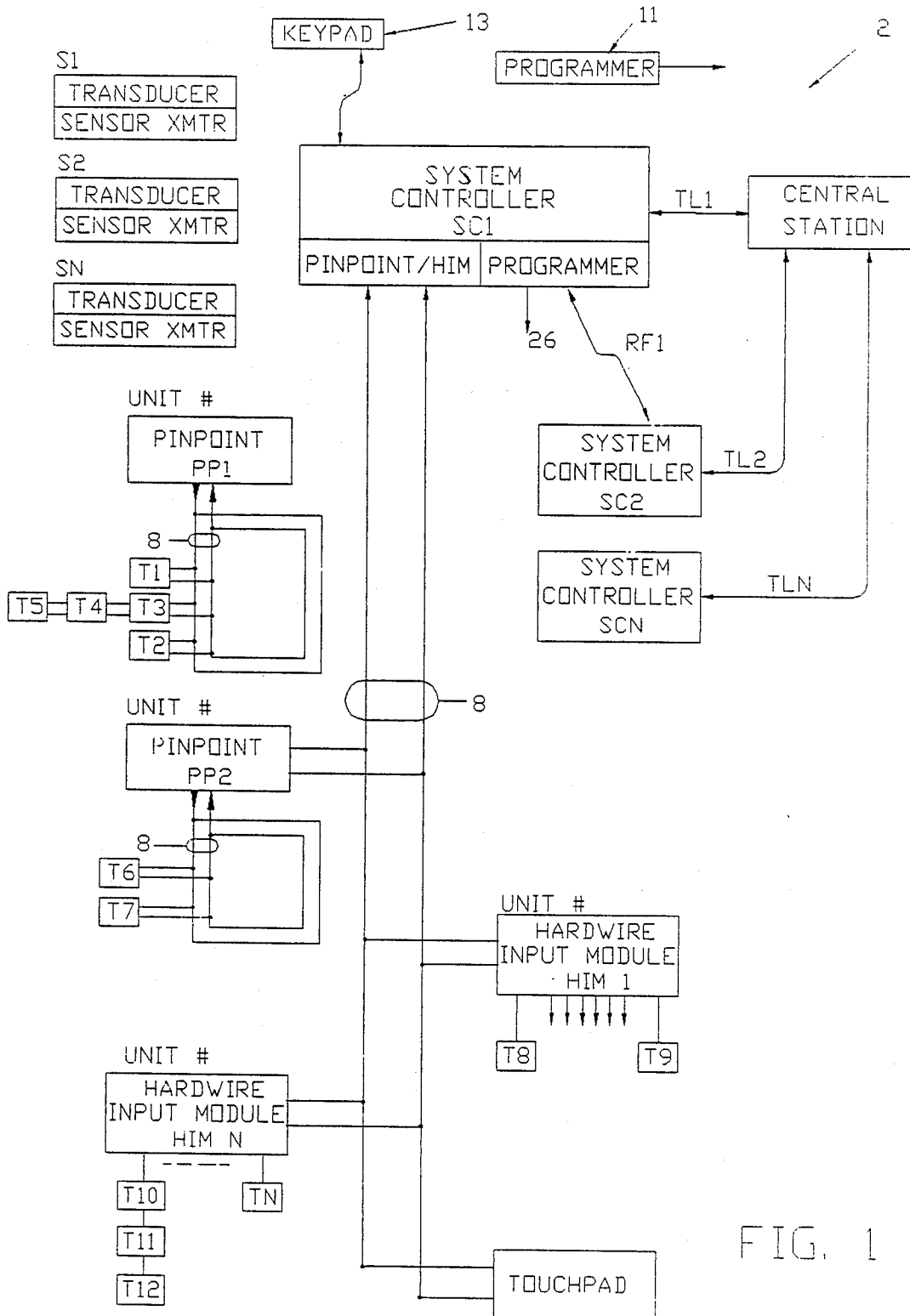


FIG. 1

FIG. 3a	FIG. 3b	FIG. 3c
---------	---------	---------

FIG. 3

FIG. 2a	FIG. 2b	FIG. 2c
FIG. 2d	FIG. 2e	FIG. 2f
FIG. 2g	FIG. 2h	FIG. 2i

FIG. 2

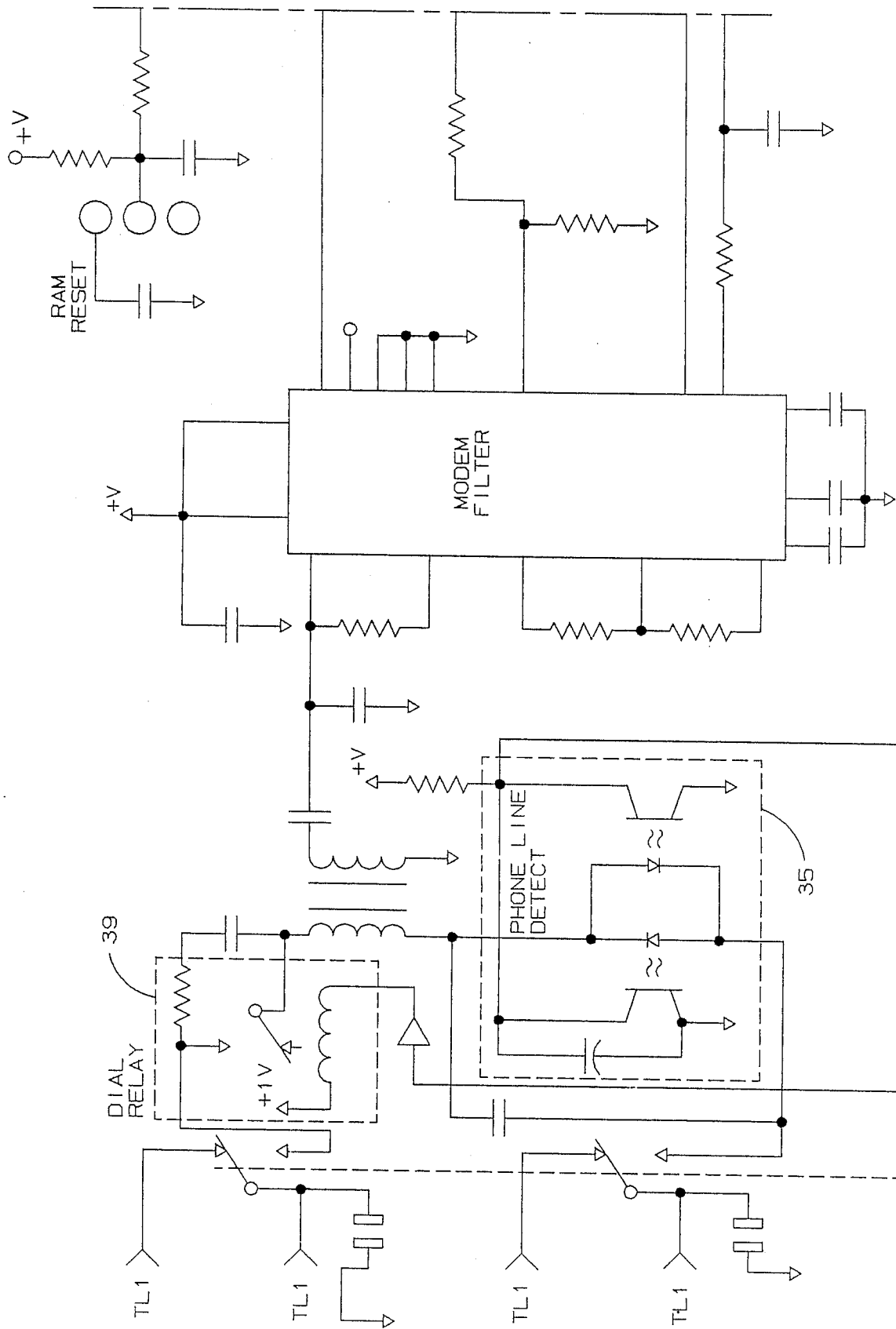


FIG. 2a

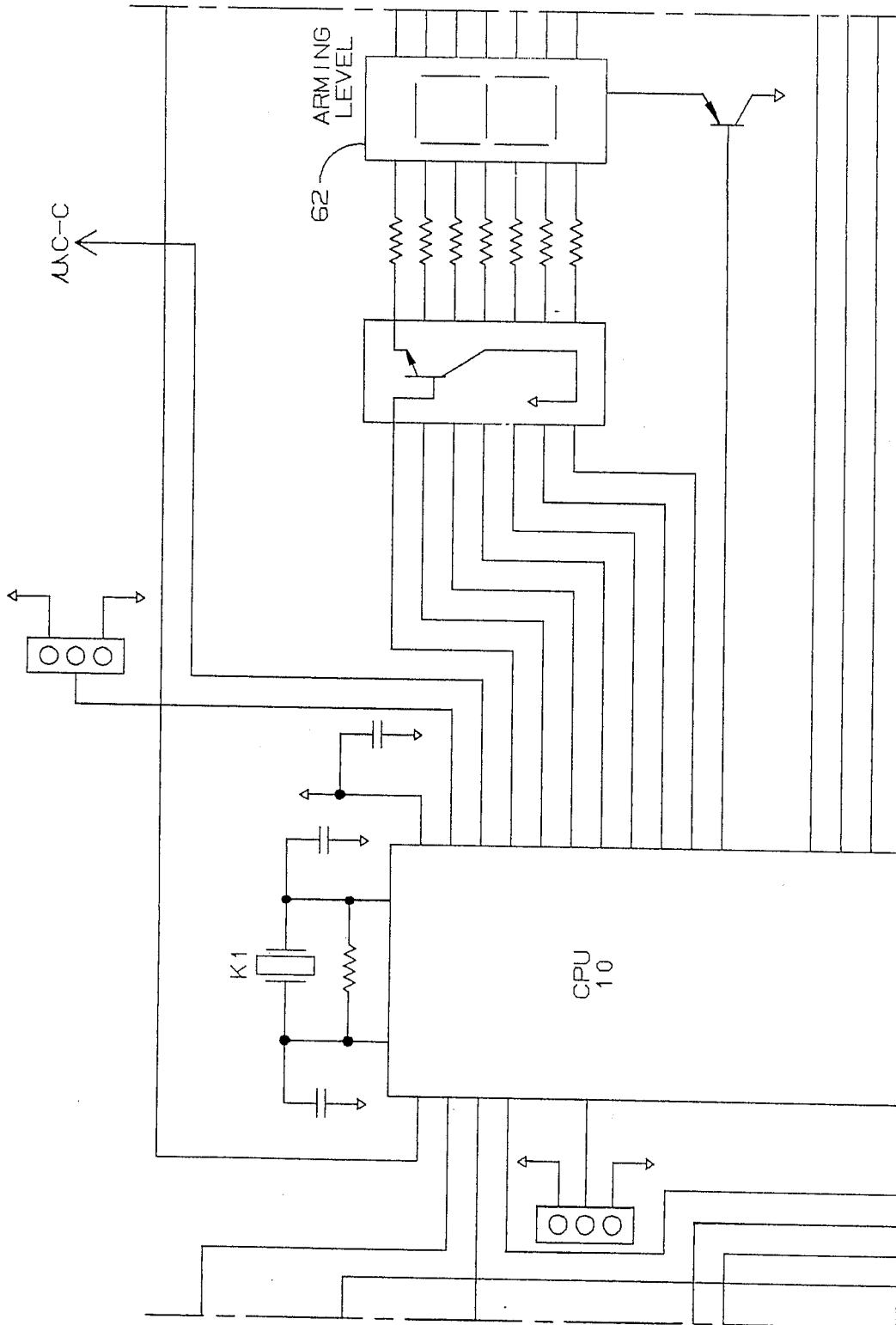


FIG. 2b

Explore Litigation Insights

Docket Alarm provides insights to develop a more informed litigation strategy and the peace of mind of knowing you're on top of things.

Real-Time Litigation Alerts



Keep your litigation team up-to-date with **real-time alerts** and advanced team management tools built for the enterprise, all while greatly reducing PACER spend.

Our comprehensive service means we can handle Federal, State, and Administrative courts across the country.

Advanced Docket Research



With over 230 million records, Docket Alarm's cloud-native docket research platform finds what other services can't. Coverage includes Federal, State, plus PTAB, TTAB, ITC and NLRB decisions, all in one place.

Identify arguments that have been successful in the past with full text, pinpoint searching. Link to case law cited within any court document via Fastcase.

Analytics At Your Fingertips



Learn what happened the last time a particular judge, opposing counsel or company faced cases similar to yours.

Advanced out-of-the-box PTAB and TTAB analytics are always at your fingertips.

API

Docket Alarm offers a powerful API (application programming interface) to developers that want to integrate case filings into their apps.

LAW FIRMS

Build custom dashboards for your attorneys and clients with live data direct from the court.

Automate many repetitive legal tasks like conflict checks, document management, and marketing.

FINANCIAL INSTITUTIONS

Litigation and bankruptcy checks for companies and debtors.

E-DISCOVERY AND LEGAL VENDORS

Sync your system to PACER to automate legal marketing.