

(12) **United States Patent**
Johnson et al.

(10) **Patent No.:** **US 6,580,950 B1**
 (45) **Date of Patent:** **Jun. 17, 2003**

- (54) **INTERNET BASED HOME COMMUNICATIONS SYSTEM**
- (75) Inventors: **Jeff Johnson**, West Fargo, ND (US); **Dan Schulz**, Fargo, ND (US); **Thor Iverson**, Fargo, ND (US); **Dan Malmstrom**, Fergus Falls, MN (US)
- (73) Assignee: **Echelon Corporation**, San Jose, CA (US)

6,161,133 A	*	12/2000	Kikinis	709/220
6,182,094 B1	*	1/2001	Humpleman et al.	707/513
6,198,479 B1	*	3/2001	Humpleman et al.	345/329
6,243,707 B1	*	6/2001	Humpleman et al.	707/102
6,288,716 B1	*	9/2001	Humpleman et al.	345/329
6,353,853 B1	*	3/2002	Gravlin	709/219
6,359,892 B1	*	3/2002	Szlam	370/401
2002/0111698 A1	*	8/2002	Graziano et al.	700/17
2002/0152311 A1	*	10/2002	Veltman et al.	709/227
2002/0180579 A1	*	12/2002	Nagaoka et al.	340/3.1

(*) Notice: Subject to any disclaimer, the term of this patent is extended or adjusted under 35 U.S.C. 154(b) by 0 days.

* cited by examiner
Primary Examiner—John Follansbee
Assistant Examiner—Ronald D Hartman, Jr.
 (74) *Attorney, Agent, or Firm*—Blakely, Sokoloff, Taylor & Zafman, LLP

- (21) Appl. No.: **09/561,091**
- (22) Filed: **Apr. 28, 2000**
- (51) **Int. Cl.⁷** **G05B 11/01**
- (52) **U.S. Cl.** **700/17; 700/83; 345/733**
- (58) **Field of Search** 700/9, 17, 65, 700/83, 1, 19, 90; 709/218–220; 345/329, 733

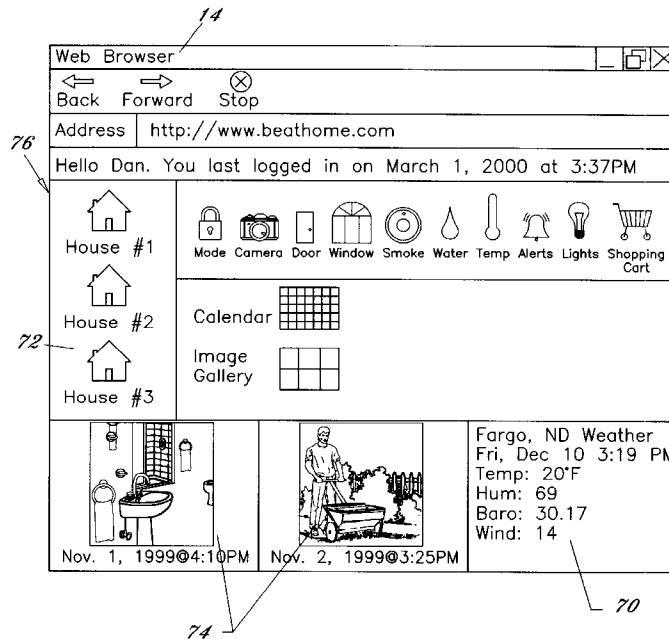
(57) **ABSTRACT**

An Internet based home communications system for allowing a homeowner to monitor and control various features of their home from a distant location via a global computer network. The inventive system comprises a plurality of control devices positioned within a home, a control unit in communication with the plurality of control devices wherein the control unit is connected to a global computer network (i.e. Internet), and a data center having server computers connected to the global computer network and in communication with the control unit. The homeowner can view, monitor and control features of their home through the web page such as viewing interior images of their home or adjusting the thermostat for the interior of their home. In addition, the control unit may notify the appropriate supplier when propane or food becomes low within the home through the global computer network.

(56) **References Cited**
 U.S. PATENT DOCUMENTS

4,418,333 A	*	11/1983	Schwarzbach et al.	340/310.01
5,809,265 A	*	9/1998	Blair et al.	345/764
5,903,226 A	*	5/1999	Suman et al.	340/825.69
5,956,487 A	*	9/1999	Venkatraman et al.	709/218
5,982,445 A	*	11/1999	Eyer et al.	348/461
6,021,324 A	*	2/2000	Sizer, II et al.	455/403
6,058,355 A	*	5/2000	Ahmed et al.	702/62
6,138,150 A	*	10/2000	Nichols et al.	709/219
6,139,177 A	*	10/2000	Venkatraman et al.	700/83

41 Claims, 11 Drawing Sheets



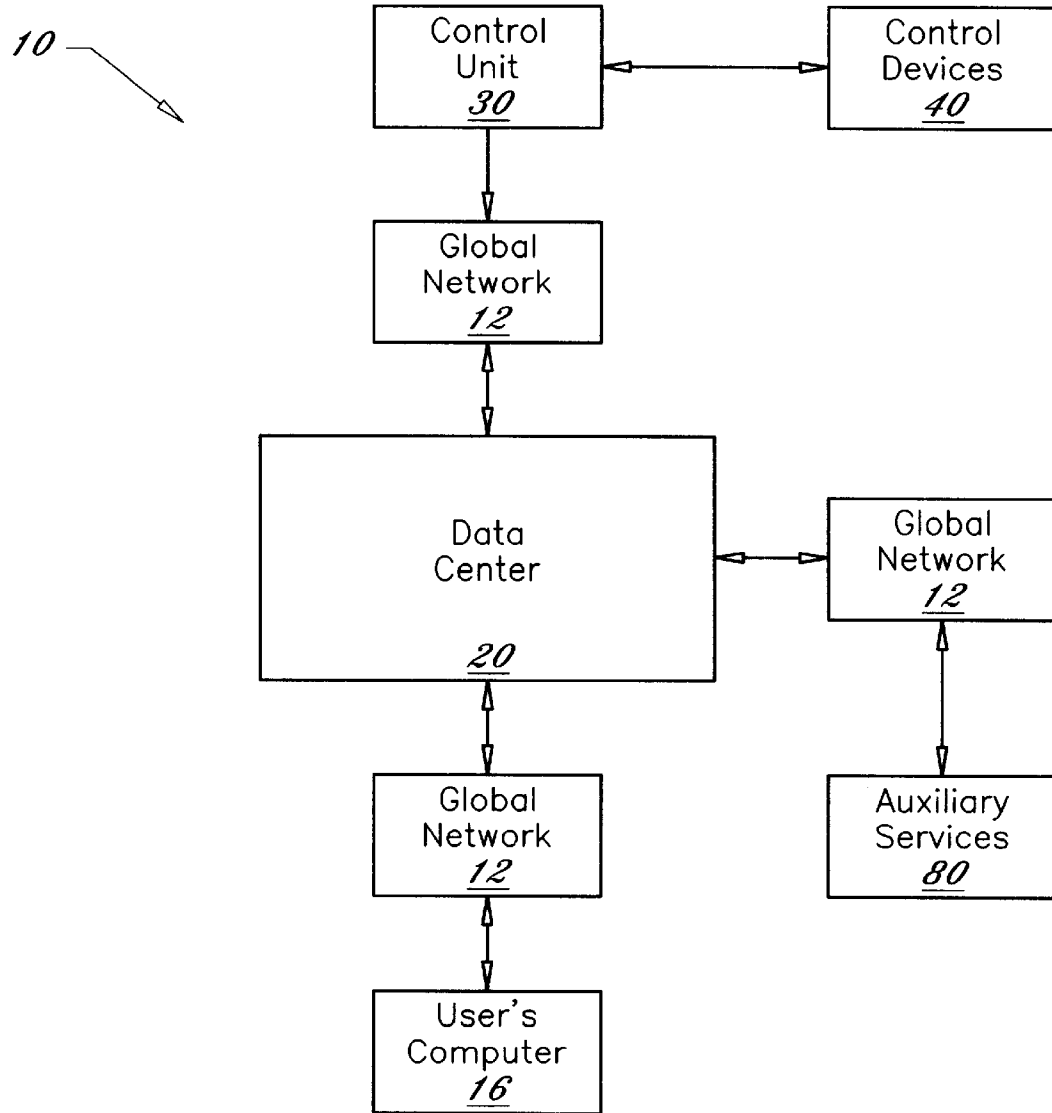


FIG. 1

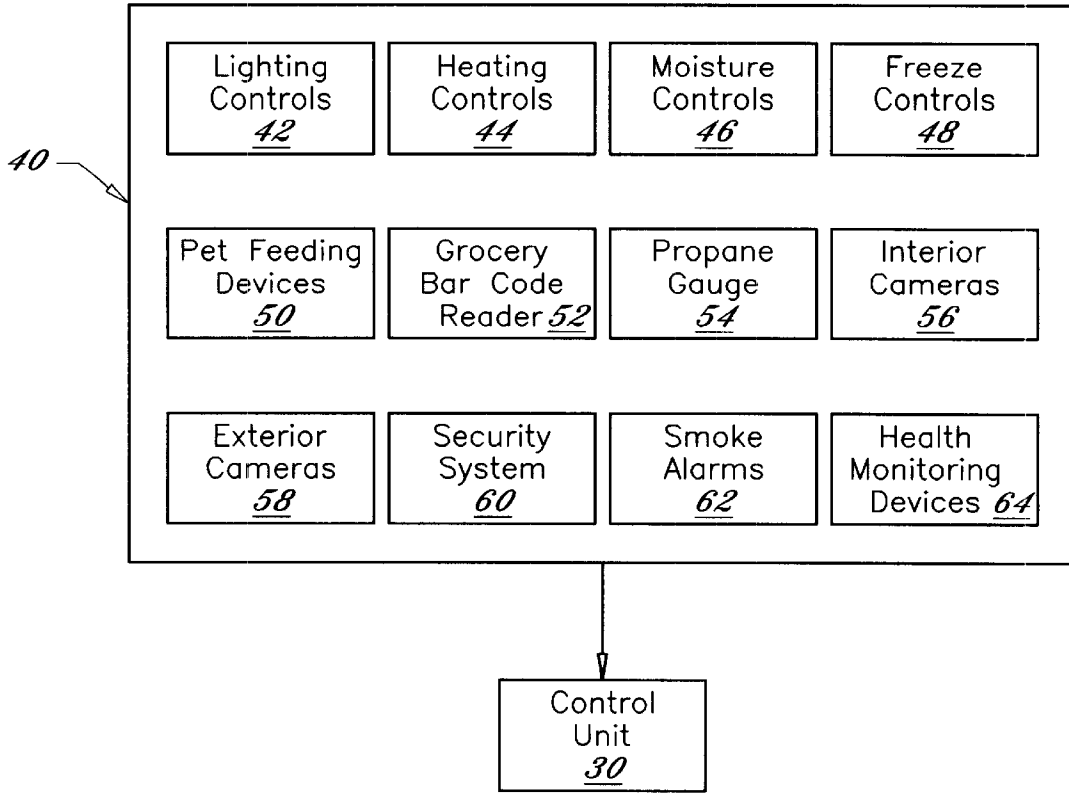


FIG. 2

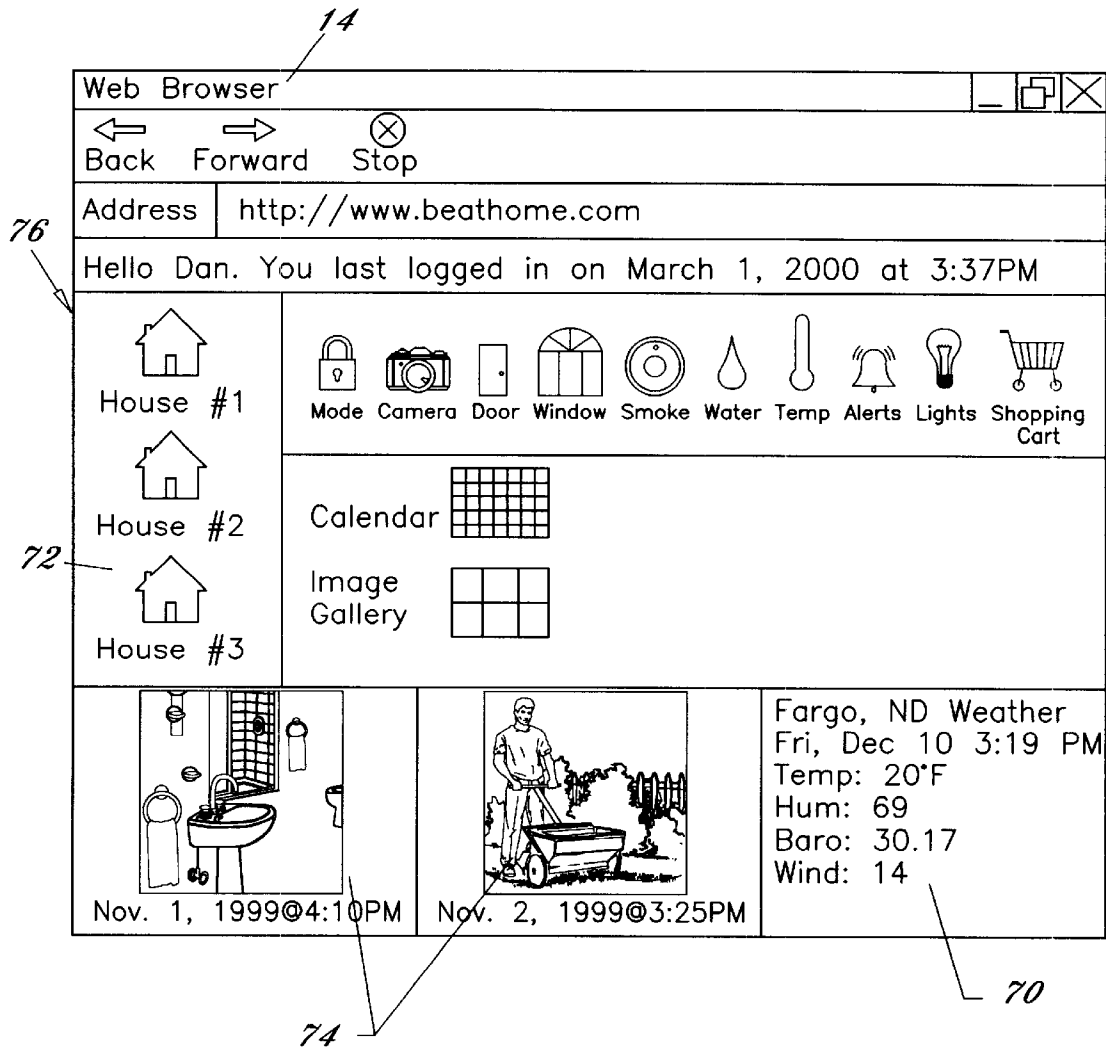


FIG. 3

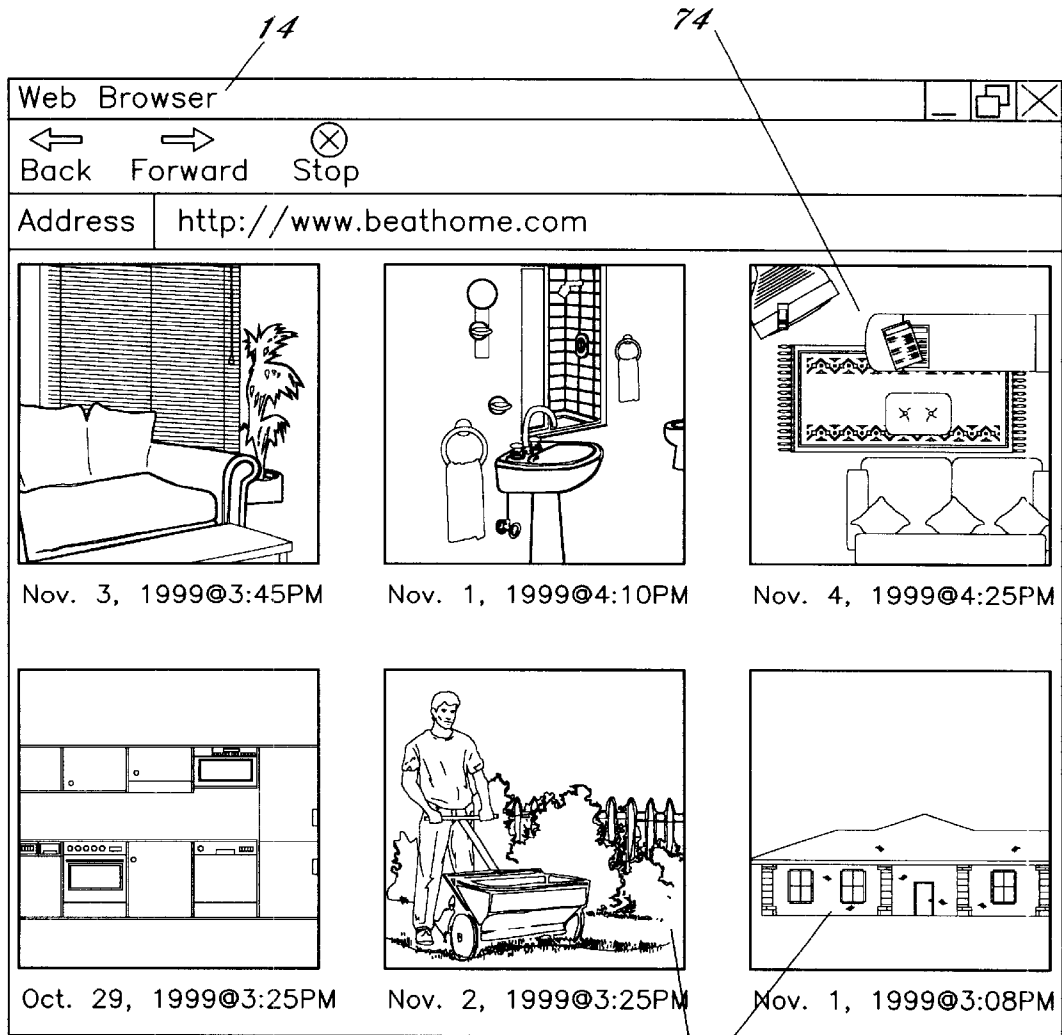


FIG. 4

Explore Litigation Insights

Docket Alarm provides insights to develop a more informed litigation strategy and the peace of mind of knowing you're on top of things.

Real-Time Litigation Alerts



Keep your litigation team up-to-date with **real-time alerts** and advanced team management tools built for the enterprise, all while greatly reducing PACER spend.

Our comprehensive service means we can handle Federal, State, and Administrative courts across the country.

Advanced Docket Research



With over 230 million records, Docket Alarm's cloud-native docket research platform finds what other services can't. Coverage includes Federal, State, plus PTAB, TTAB, ITC and NLRB decisions, all in one place.

Identify arguments that have been successful in the past with full text, pinpoint searching. Link to case law cited within any court document via Fastcase.

Analytics At Your Fingertips



Learn what happened the last time a particular judge, opposing counsel or company faced cases similar to yours.

Advanced out-of-the-box PTAB and TTAB analytics are always at your fingertips.

API

Docket Alarm offers a powerful API (application programming interface) to developers that want to integrate case filings into their apps.

LAW FIRMS

Build custom dashboards for your attorneys and clients with live data direct from the court.

Automate many repetitive legal tasks like conflict checks, document management, and marketing.

FINANCIAL INSTITUTIONS

Litigation and bankruptcy checks for companies and debtors.

E-DISCOVERY AND LEGAL VENDORS

Sync your system to PACER to automate legal marketing.