



[54] DOCUMENT PROCESSING DEVICE
[75] Inventors: Takeshi Morimura; Tadashi Watanabe; Yuichi Fukui, all of Yamatokoriyama, Japan
[73] Assignee: Sharp Kabushiki Kaisha, Osaka, Japan
[21] Appl. No.: 08/674,108
[22] Filed: Jul. 3, 1996

0440364 8/1991 European Pat. Off. .
0441496 8/1991 European Pat. Off. .
0551778 7/1993 European Pat. Off. .
0585944 3/1994 European Pat. Off. .
0595746 5/1994 European Pat. Off. .
6342336 12/1994 Japan .

[30] Foreign Application Priority Data
Aug. 11, 1995 [JP] Japan 7-205770
Sep. 25, 1995 [JP] Japan 7-245971
[51] Int. Cl.⁷ G09G 5/00
[52] U.S. Cl. 345/173; 345/174; 345/179
[58] Field of Search 345/173, 174, 345/175, 176, 177, 179

OTHER PUBLICATIONS

“Pressure-Sensitive Trackball Device,” IBM Technical Disclosure Bulletin, vol. 38, No. 10, Oct. (1995) Armonk, NY, US.

“Pressure-Sensitive Mouse,” IBM Technical Disclosure Bulletin, vol. 35, No. 6, Nov. 1992, Armonk, NY, US.

Primary Examiner—Matthew Luu

[56] References Cited

U.S. PATENT DOCUMENTS

4,389,711 6/1983 Hotta et al. 364/556
4,395,920 8/1983 Kurtin et al. 73/862.64
5,134,388 7/1992 Murakami 345/173
5,280,275 1/1994 Kaplan 345/157
5,298,672 3/1994 Gallitzendorfer 84/603
5,347,589 9/1994 Meeks et al. 382/3
5,483,261 1/1996 Yasutake 345/173
5,635,683 6/1997 McDermott et al. 345/179

FOREIGN PATENT DOCUMENTS

0434086 6/1991 European Pat. Off. .

[57] ABSTRACT

When a user touches a tablet with a pen, a coordinate pointed with a nib of a pen and a tool force on this coordinate are detected, and a cursor is displayed at a position corresponding to the coordinate in a display device. Furthermore, the shape, color and size, etc., of the cursor can be varied according to a change in coordinate, tool force. This permits the user to recognize a level of the tool force which he actually applies at a glance. Additionally, an operational mode is switched according to an amount of change in detected coordinate and the tool force. As a result, the user is permitted to control an operational mode of the document processing device with ease only by a pen operation, thereby improving an operability.

18 Claims, 40 Drawing Sheets

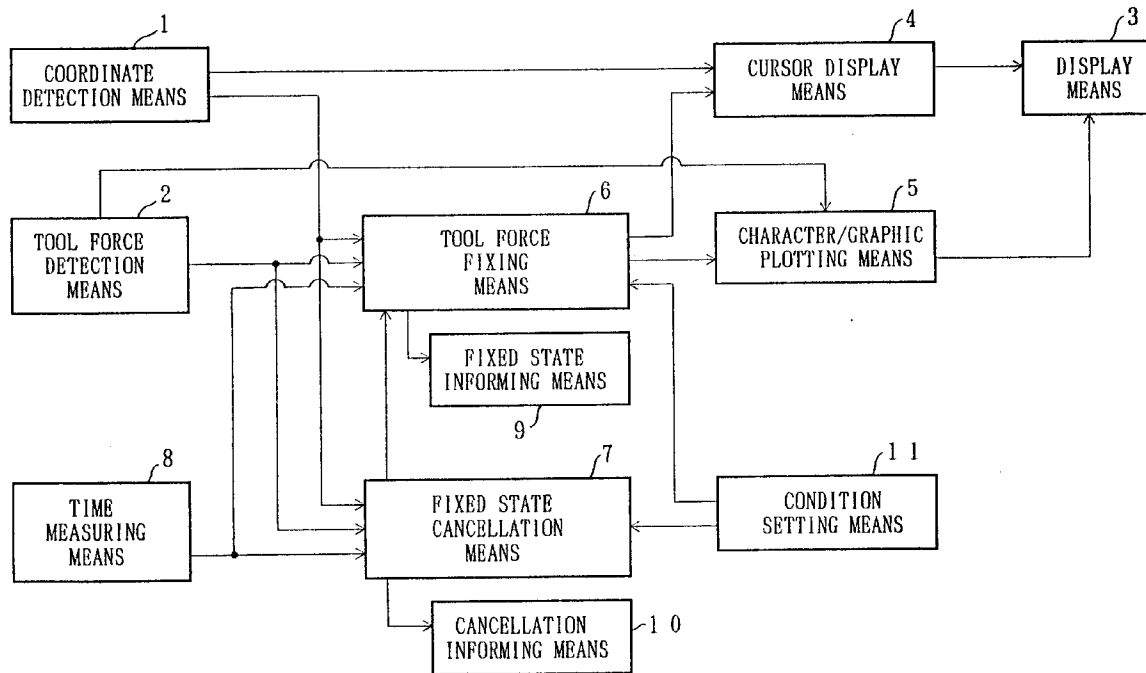


FIG. 1

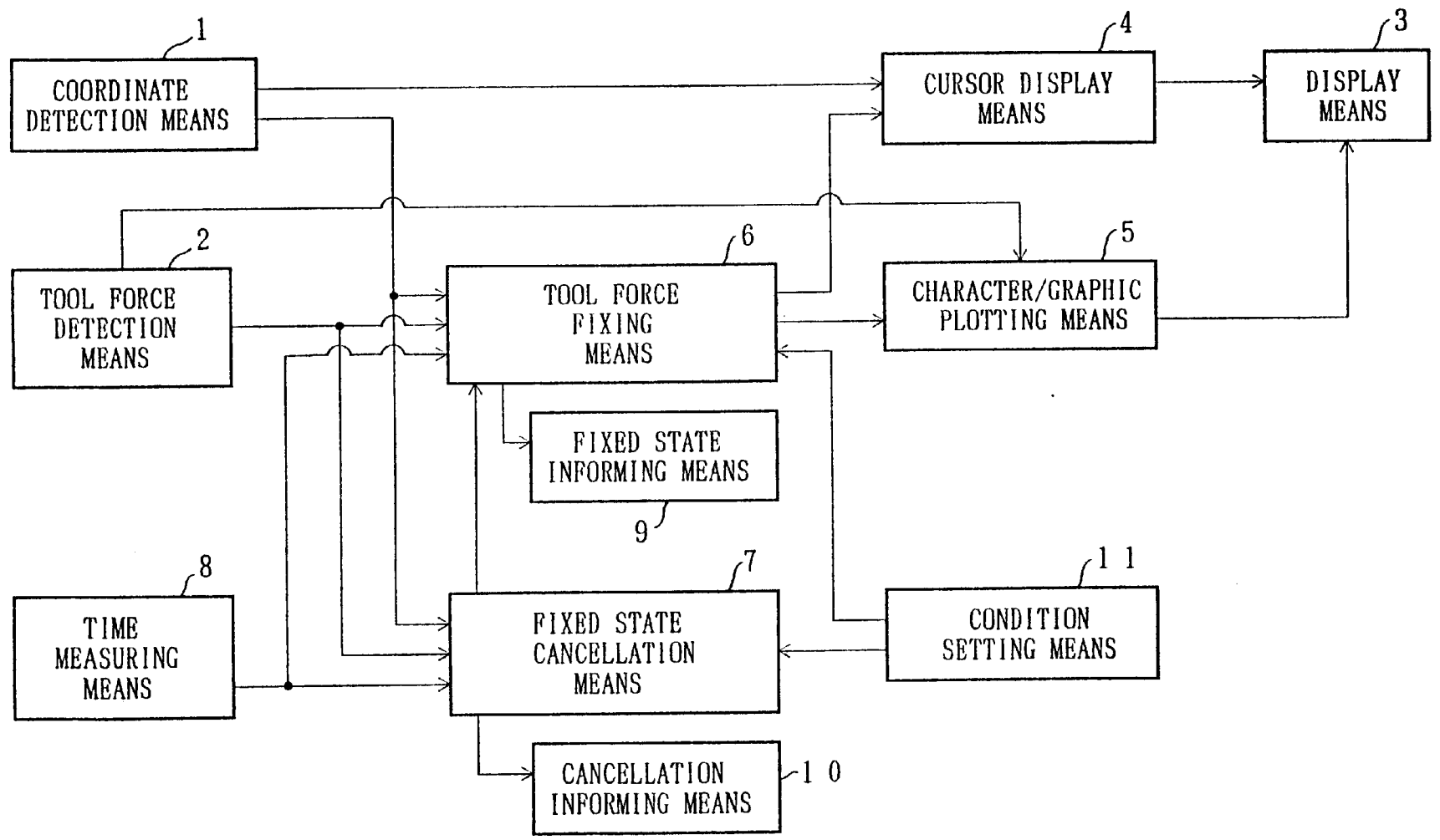
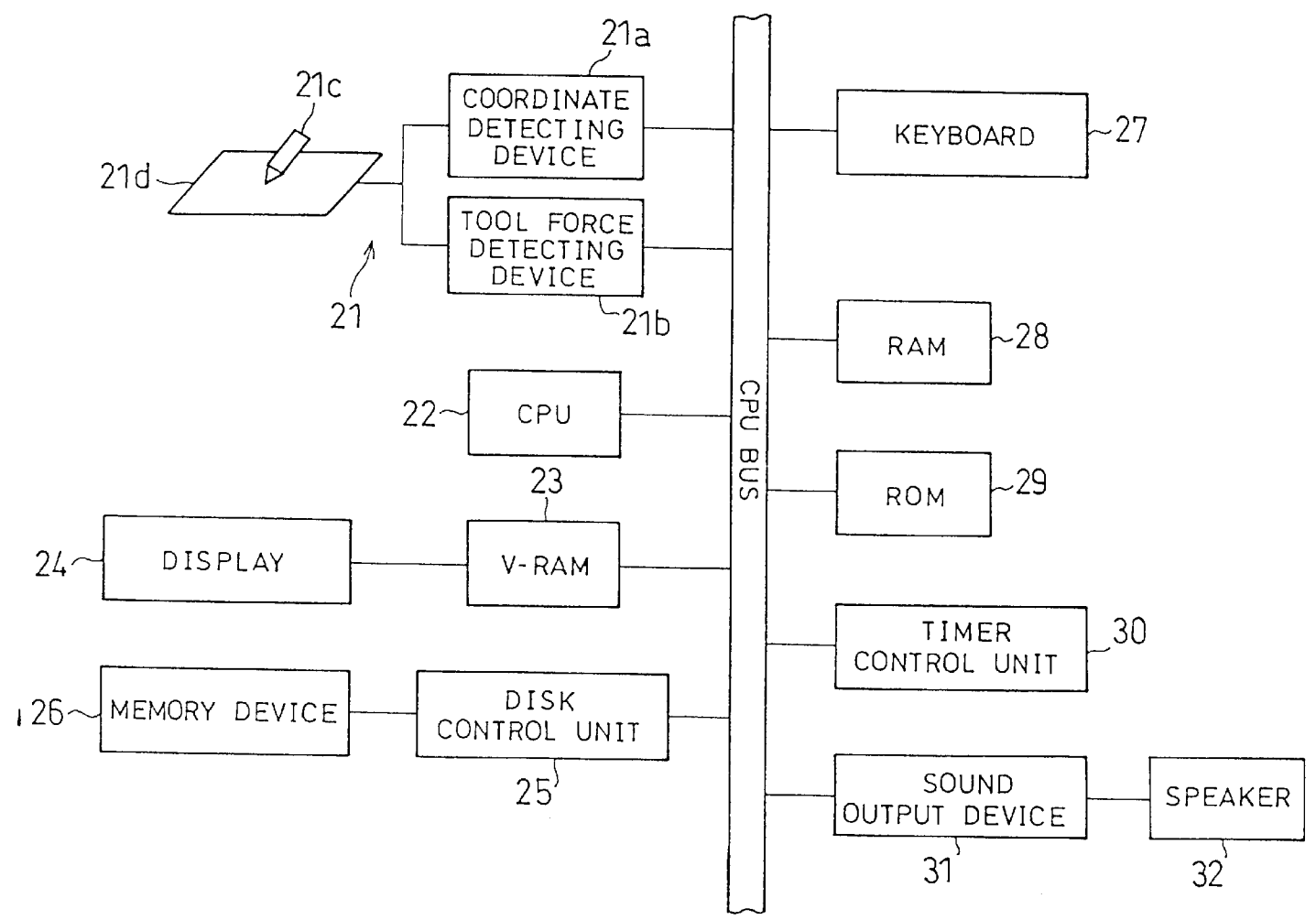


FIG. 2



OCCURRENCE OF PEN EVENT

FIG. 3

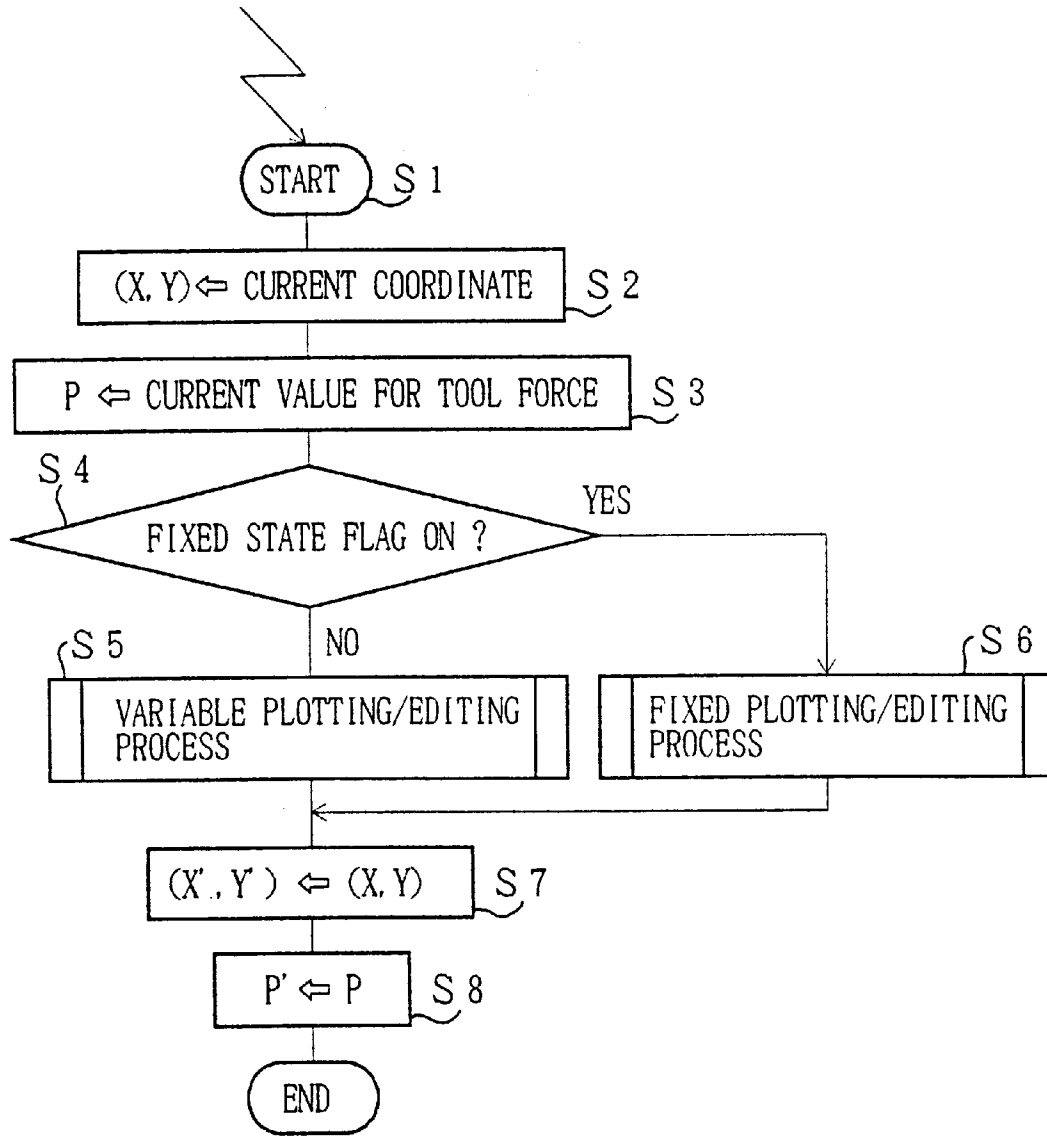
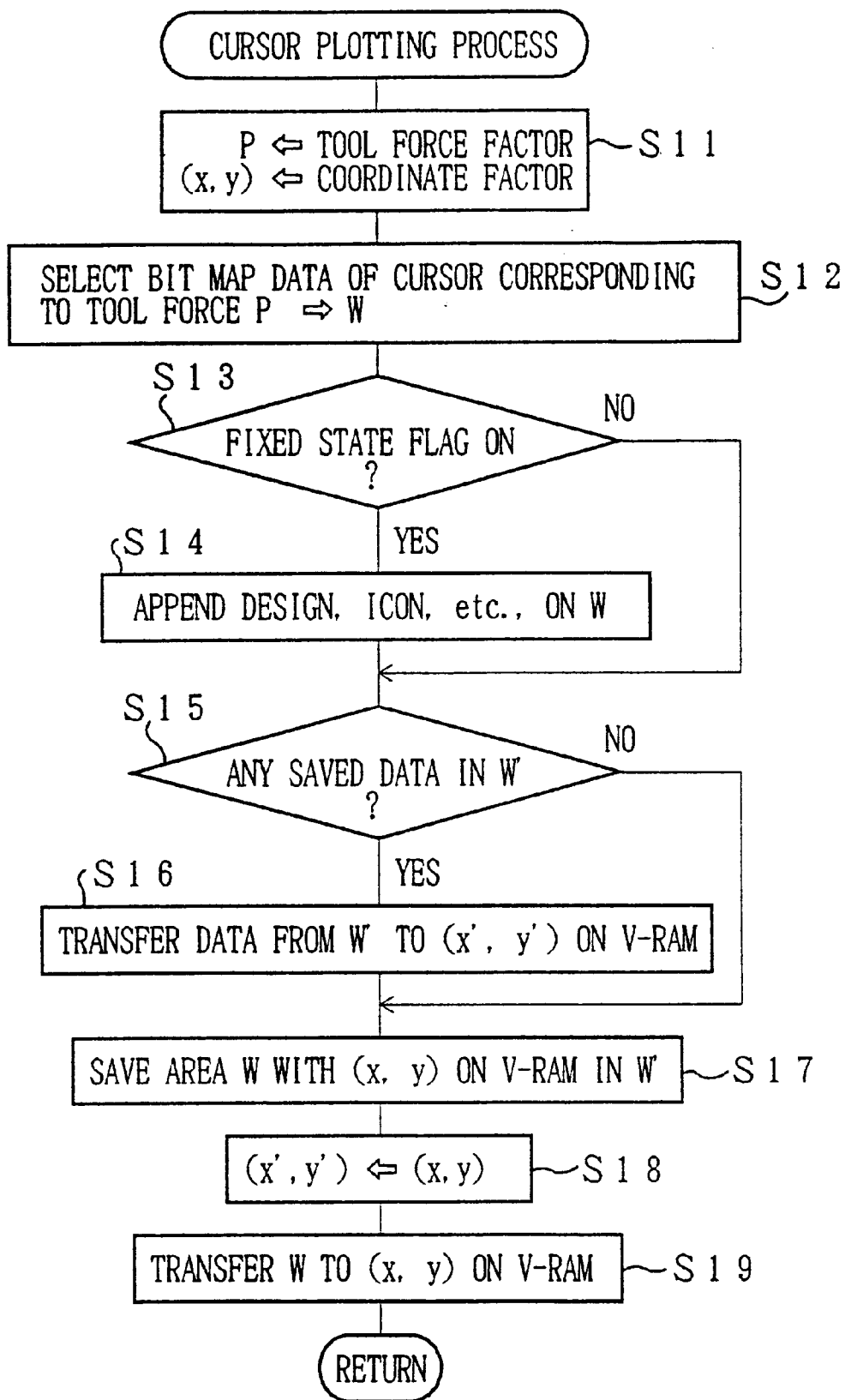


FIG. 4



Explore Litigation Insights

Docket Alarm provides insights to develop a more informed litigation strategy and the peace of mind of knowing you're on top of things.

Real-Time Litigation Alerts



Keep your litigation team up-to-date with **real-time alerts** and advanced team management tools built for the enterprise, all while greatly reducing PACER spend.

Our comprehensive service means we can handle Federal, State, and Administrative courts across the country.

Advanced Docket Research



With over 230 million records, Docket Alarm's cloud-native docket research platform finds what other services can't. Coverage includes Federal, State, plus PTAB, TTAB, ITC and NLRB decisions, all in one place.

Identify arguments that have been successful in the past with full text, pinpoint searching. Link to case law cited within any court document via Fastcase.

Analytics At Your Fingertips



Learn what happened the last time a particular judge, opposing counsel or company faced cases similar to yours.

Advanced out-of-the-box PTAB and TTAB analytics are always at your fingertips.

API

Docket Alarm offers a powerful API (application programming interface) to developers that want to integrate case filings into their apps.

LAW FIRMS

Build custom dashboards for your attorneys and clients with live data direct from the court.

Automate many repetitive legal tasks like conflict checks, document management, and marketing.

FINANCIAL INSTITUTIONS

Litigation and bankruptcy checks for companies and debtors.

E-DISCOVERY AND LEGAL VENDORS

Sync your system to PACER to automate legal marketing.