

## p185<sup>HER2</sup> Monoclonal Antibody Has Antiproliferative Effects In Vitro and Sensitizes Human Breast Tumor Cells to Tumor Necrosis Factor

ROBERT M. HUDZIAK,<sup>1</sup> GAIL D. LEWIS,<sup>2</sup> MARCY WINGET,<sup>3</sup> BRIAN M. FENDLY,<sup>3</sup> H. MICHAEL SHEPARD,<sup>2</sup>  
AND AXEL ULLRICH<sup>1+\*</sup>

*Departments of Developmental Biology,<sup>1</sup> Pharmacological Sciences,<sup>2</sup> and Medicinal and Analytical Chemistry,<sup>3</sup>  
Genentech, Inc., 460 Point San Bruno Boulevard, South San Francisco, California 94080*

Received 3 October 1988/Accepted 8 December 1988

**The *HER2/c-erbB-2* gene encodes the epidermal growth factor receptorlike human homolog of the rat *neu* oncogene. Amplification of this gene in primary breast carcinomas has been shown to correlate with poor clinical prognosis for certain cancer patients. We show here that a monoclonal antibody directed against the extracellular domain of p185<sup>HER2</sup> specifically inhibits the growth of breast tumor-derived cell lines overexpressing the *HER2/c-erbB-2* gene product and prevents *HER2/c-erbB-2*-transformed NIH 3T3 cells from forming colonies in soft agar. Furthermore, resistance to the cytotoxic effect of tumor necrosis factor alpha, which has been shown to be a consequence of *HER2/c-erbB-2* overexpression, is significantly reduced in the presence of this antibody.**

*HER2/c-erbB-2*, the human homolog of the rat proto-oncogene *neu* (4, 34), encodes a 1,255-amino-acid glycoprotein with extensive homology to the human epidermal growth factor (EGF) receptor (4, 21, 33, 34, 42). The *HER2/c-erbB-2* gene product, p185<sup>HER2</sup>, has all of the structural features and many of the functional properties of subclass I growth factor receptors (reviewed in references 43 and 44), including cell surface location and an intrinsic tyrosine kinase activity. However, the ligand for this putative growth factor receptor has not yet been identified.

Amplification of the *HER2/c-erbB-2* gene has been found in human salivary gland and gastric tumor-derived cell lines (13, 34), as well as in mammary gland carcinomas (21, 22, 40, 42). Slamon et al. (35) surveyed 189 primary breast adenocarcinomas and determined that the *HER2/c-erbB-2* gene was amplified in about 30% of the cases. Most importantly, *HER2/c-erbB-2* amplification was correlated with a negative prognosis and high probability of relapse. Similar although less frequent amplification of the *HER2/c-erbB-2* gene has been reported for gastric and colon adenocarcinomas (45, 46). Experiments with NIH 3T3 cells also suggest a direct role for the overexpressed, structurally unaltered *HER2/c-erbB-2* gene product p185<sup>HER2</sup> in neoplastic transformation. High levels of *HER2/c-erbB-2* gene expression attained by coamplification of the introduced gene with dihydrofolate reductase by methotrexate selection (18) or by using a strong promoter (6) was shown to transform NIH 3T3 fibroblasts. Only cells with high levels of p185<sup>HER2</sup> are transformed, i.e., have an altered morphology, are anchorage independent, and will form tumors in athymic mice.

Overexpression of p185<sup>HER2</sup> may, furthermore, contribute to malignant tumor development by allowing tumor cells to evade one component of the antitumor defenses of the body, the activated macrophage (17). Macrophages play an important role in immune surveillance against neoplastic growth in vivo (1, 2, 38), and Urban et al. (39) have shown that tumor

cells made resistant to macrophages display enhanced tumorigenicity. Tumor necrosis factor alpha (TNF- $\alpha$ ) has been shown to play a role in activated macrophage-mediated tumor cell killing in vitro (3, 11, 23, 29, 39). NIH 3T3 cells transformed by a transfected and amplified *HER2/c-erbB-2* cDNA show increased resistance to the cytotoxic effects of activated macrophages or TNF- $\alpha$  in direct correlation with increased levels of p185<sup>HER2</sup> expression. Furthermore, breast tumor cell lines with high levels of p185<sup>HER2</sup> exhibit resistance to TNF- $\alpha$ . Resistance to host antitumor defenses could facilitate the escape of cells from a primary tumor to establish metastases at distant sites.

To further investigate the consequences of alteration in *HER2/c-erbB-2* gene expression in mammary gland neoplasia and to facilitate investigation of the normal biological role of the *HER2/c-erbB-2* gene product, we have prepared monoclonal antibodies against the extracellular domain of p185<sup>HER2</sup>. One monoclonal antibody (4D5) was characterized in more detail and was shown to inhibit in vitro proliferation of human breast tumor cells overexpressing p185<sup>HER2</sup> and, furthermore, to increase the sensitivity of these cells to the cytotoxic effects of TNF- $\alpha$ .

### MATERIALS AND METHODS

**Cells and cell culture.** Human tumor cell lines were obtained from the American Type Culture Collection. The mouse fibroblast line NIH 3T3/HER2-3<sub>400</sub>, expressing an amplified *HER2/c-erbB-2* cDNA under simian virus 40 early promoter control, and the vector-transfected control cell line NIH 3T3/CVN have been described previously (18).

Cells were cultured in a 1:1 mixture of Dulbecco modified Eagle medium and Ham nutrient mixture F-12 supplemented with 2 mM glutamine, 100 u of penicillin per ml, 100  $\mu$ g of streptomycin per ml, and 10% serum. Human tumor cell lines were cultured with fetal bovine serum (GIBCO Laboratories, Grand Island, N.Y.); NIH 3T3 derivatives were cultured with calf serum (Hyclone Laboratories, Inc., Logan, Utah.).

**Immunization.** Female BALB/c mice were immunized with NIH 3T3/HER2-3<sub>400</sub> cells expressing high levels of

\* Corresponding author.

† Present address: Max-Planck-Institut für Biochemie, 8033 Martinsried, Federal Republic of Germany.

p185<sup>HER2</sup>. The cells were washed once with phosphate-buffered saline (PBS) and detached from the plate with PBS containing 25 mM EDTA. After low-speed centrifugation, the cells were suspended in cold PBS ( $2 \times 10^7$  cells per ml). Each mouse was injected intraperitoneally with 0.5 ml of this cell suspension on weeks 0, 2, 5, and 7.

On weeks 9 and 13, 100  $\mu$ l of a Triton X-100 membrane preparation of p185<sup>HER2</sup>, partially purified by wheat germ agglutinin chromatography (700  $\mu$ g of protein per ml) (25), was administered intraperitoneally. Three days before fusion, 100  $\mu$ l of the enriched p185<sup>HER2</sup> protein was administered intravenously.

**Fusion and screening.** Mice with high antibody titers as determined by immunoprecipitation of p185<sup>HER2</sup> were sacrificed, and their splenocytes were fused as described previously (26). Spleen cells were mixed at a 4:1 ratio with the fusion partner, mouse myeloma cell line X63-Ag8.653 (20), in the presence of 50% polyethylene glycol 4000. Fused cells were plated at a density of  $2 \times 10^5$  cells per well in 96-well microdilution plates. The hypoxanthine-azaserine (12) selection for hybridomas was begun 24 h later. Beginning at day 10 postfusion, supernatants from hybridoma-containing wells were tested for the presence of antibodies specific for p185<sup>HER2</sup> by an enzyme-linked immunosorbent assay with the wheat germ agglutinin chromatography-purified p185<sup>HER2</sup> preparation (28). Enzyme-linked immunosorbent assay-positive supernatants were confirmed by immunoprecipitation and cloned twice by limiting dilution.

Large quantities of specific monoclonal antibodies were produced by preparation of ascites fluid; antibodies were then purified on protein A-Sepharose columns (Fermentech, Inc., Edinburgh, Scotland) and stored sterile in PBS at 4°C.

**Immunoprecipitations and antibodies.** Cells were harvested by trypsinization, counted in a Coulter counter (Coulter Electronics, Inc., Hialeah, Fla.), and plated 24 h before being harvested for analysis of p185<sup>HER2</sup> expression. Cells were lysed at 4°C with 0.8 ml of HNEG lysis buffer (18) per 100-mm plate. After 10 min, 1.6 ml of lysis dilution buffer (HNEG buffer with 1% bovine serum albumin and 0.1% Triton X-100) was added to each plate, and the extracts were clarified by centrifugation at  $12,000 \times g$  for 5 min.

Antibodies were added to the cell extracts and allowed to bind at 4°C for 2 to 4 h. Immune complexes were collected by adsorption to protein A-Sepharose beads for 20 min and washed three times with 1 ml of HNEG buffer–0.1% Triton X-100. Autophosphorylation reactions were carried out for 20 min at 4°C in 50  $\mu$ l of HNEG wash buffer containing 5 mM MnCl<sub>2</sub> and 3  $\mu$ Ci of [ $\gamma$ -<sup>32</sup>P]ATP (5,000 Ci/mmol, Amersham Corp., Arlington Heights, Ill.). The autophosphorylation reaction conditions have been described previously (18). Proteins were separated on sodium dodecyl sulfate (SDS)–7.5% polyacrylamide gels and analyzed by autoradiography.

The polyclonal antibody, G-H2CT17, recognizing the carboxy-terminal 17 amino acids of p185<sup>HER2</sup>, has been described previously (18). The anti-EGF receptor monoclonal antibody 108 (16) was provided by Joseph Schlessinger, Rorer Biotechnology, Inc.

**Fluorescence-activated cell sorting.** SK-BR-3 human breast tumor cells overexpressing the *HER2/c-erbB-2* gene (17, 22) or A431 human squamous carcinoma cells overexpressing the EGF receptor gene (14) were grown in T175 flasks. They were detached from the flasks by treatment with 25 mM EDTA–0.15 M NaCl, collected by low-speed centrifugation, and suspended at  $1 \times 10^6$  cells per ml in PBS–1% fetal bovine serum. One milliliter of each cell line was incubated with 10  $\mu$ g of either anti-*HER2/c-erbB-2* monoclonal antibody (4D5)

or a control antibody (40.1.H1) recognizing the hepatitis B surface antigen. The cells were washed twice and suspended on ice for 30 min in 1 ml of PBS–1% fetal bovine serum containing 10  $\mu$ g of goat anti-mouse immunoglobulin G F(ab')<sub>2</sub> fragments conjugated with fluorescein isothiocyanate dye (Boehringer Mannheim Biochemicals, Indianapolis, Ind.). Unbound fluorescein dye was removed by two further washes. The cells were suspended at  $2 \times 10^6$  per ml in PBS–1% fetal bovine serum and analyzed with an EPICS 753 (Coulter) fluorescence-activated cell sorter. Fluorescein was excited by 300 mW of 488-nm argon laser light, and the emitted light was collected with a 525-nm band-pass filter with a 10-nm band width.

**Down-regulation assay.** SK-BR-3 cells were plated at  $1.5 \times 10^5$  cells per 35-mm culture dish in normal medium. After a 6-h period to allow attachment, the medium was replaced by 1.5 ml of methionine-free labeling medium containing 150  $\mu$ Ci of [<sup>35</sup>S]methionine per ml and 2% dialyzed fetal bovine serum. The cells were metabolically labeled for 14 h and then chased with medium containing 2% dialyzed serum and unlabeled methionine. Either a control monoclonal antibody (40.1.H1) or anti-p185<sup>HER2</sup> (4D5) was added to a final concentration of 2.5  $\mu$ g/ml. At 0, 5, and 11 h, extracts were prepared with 0.3 ml of lysis solution and 0.6 ml of dilution buffer. The p185<sup>HER2</sup> was immunoprecipitated with 2.5  $\mu$ l of polyclonal antibody G-H2CT17. The washed immune complexes were dissolved in sample buffer, electrophoresed on a SDS–7.5% polyacrylamide gel, and analyzed by autoradiography. Each time point determination was performed in duplicate. Autoradiograph band intensities were quantitated by using a scanner (Ambis Systems).

**Cell proliferation assays.** The anti-p185<sup>HER2</sup> monoclonal antibodies were characterized by using the breast tumor cell line SK-BR-3. Cells were detached by using 0.25% (vol/vol) trypsin and suspended in complete medium at a density of 4

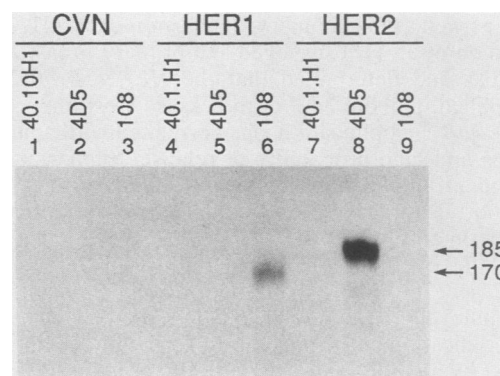


FIG. 1. Specificity of monoclonal antibody 4D5. Three cell lines, NIH 3T3/CVN, NIH 3T3/HER1-EGF receptor, and NIH 3T3/HER2-3<sub>400</sub>, were plated out at  $2.0 \times 10^6$  in 100-mm culture dishes. At 24 h, Triton X-100 lysates were prepared and divided into three portions. Either an irrelevant monoclonal antibody (6  $\mu$ g of anti-hepatitis B virus surface antigen, 40.1.H1; lanes 1, 4, and 7), anti-p185<sup>HER2</sup> monoclonal antibody 4D5 (6  $\mu$ g; lanes 2, 5, and 8), or anti-EGF receptor monoclonal antibody 108 (6  $\mu$ g; lanes 3, 6, and 9) was added and allowed to bind at 4°C for 4 h. The immune complexes were collected with 30  $\mu$ l of protein A-Sepharose. Rabbit anti-mouse immunoglobulin (7  $\mu$ g) was added to each 4D5 immunoprecipitation to improve the binding of this monoclonal antibody to the protein A-coated beads. Proteins were labeled by autophosphorylation and separated on an SDS–7.5% polyacrylamide gel. The gel was exposed to film at –70°C for 4 h with an intensifying screen. The arrows show the positions of proteins of  $M_r$  185,000 and 170,000.

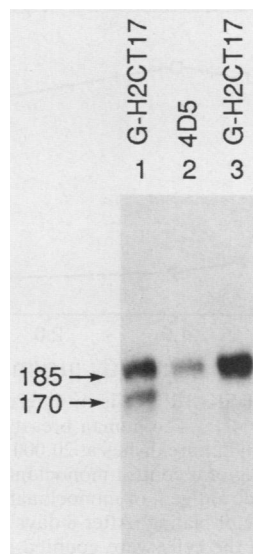


FIG. 2. Binding of monoclonal antibody 4D5 to unglycosylated receptor. NIH 3T3/HER2-3<sub>400</sub> cells were plated into two 100-mm plates at  $2 \times 10^6$  cells per plate. After 14 h, the antibiotic tunicamycin was added to one plate at 3  $\mu\text{g}/\text{ml}$ . After a further 5.5 h of incubation, Triton X-100 lysates were then prepared from each plate. Immunoprecipitations, the autophosphorylation reaction, and SDS-polyacrylamide gel electrophoresis were performed as described in the legend to Fig. 1. Lanes: 1, tunicamycin-treated cell lysate (one-third of a plate) immunoprecipitated with 2.5  $\mu\text{l}$  of a polyclonal antibody directed against the C terminus of p185<sup>HER2</sup>; 2, tunicamycin-treated cell lysate (one-third of a plate) immunoprecipitated with 6  $\mu\text{g}$  of 4D5; 3, untreated control lysate (one-third of a plate) immunoprecipitated with the polyclonal antibody. The arrows show the locations of proteins of  $M_r$  185,000 and 170,000.

$\times 10^5$  cells per ml. Aliquots of 100  $\mu\text{l}$  ( $4 \times 10^4$  cells) were plated into 96-well microdilution plates, the cells were allowed to adhere, and 100  $\mu\text{l}$  of media alone or media containing monoclonal antibody (final concentration, 5  $\mu\text{g}/\text{ml}$ ) was then added. After 72 h, plates were washed twice with PBS (pH 7.5), stained with crystal violet (0.5% in methanol), and analyzed for relative cell proliferation as described previously (36).

For assays in which monoclonal antibodies were combined with recombinant human TNF- $\alpha$  ( $5.0 \times 10^7$  U/mg; Genentech, Inc.), cells were plated and allowed to adhere as described above. Following cell adherence, control medium alone or medium containing monoclonal antibodies was added to a final concentration of 5  $\mu\text{g}/\text{ml}$ . Cultures were incubated for another 4 h, and then increasing concentrations of TNF- $\alpha$  were added to a final volume of 200  $\mu\text{l}$ . Following 72 h of incubation, the relative cell number was determined by crystal violet staining. Some samples were analyzed by crystal violet staining following cell adherence for determination of the initial cell number.

## RESULTS

**Specificity of monoclonal antibody 4D5.** Monoclonal antibodies directed against the extracellular domain of p185<sup>HER2</sup> were prepared by immunizing mice with NIH 3T3 cells transfected with a *HER2/c-erbB-2* cDNA (HER2-3<sub>400</sub>) (17, 18) and overexpressing the corresponding gene product, p185<sup>HER2</sup>. One antibody exhibited several interesting biological properties and was chosen for further characterization. Antibody 4D5 specifically immunoprecipitated a single <sup>32</sup>P-

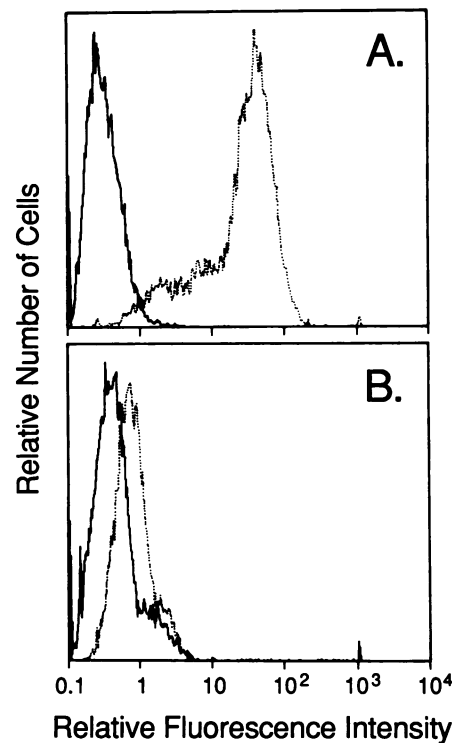


FIG. 3. Fluorescence-activated cell sorter histograms of human tumor cells binding anti-p185 monoclonal antibody 4D5. —, Binding by the control antibody, 40.1.H1, directed against the hepatitis B surface antigen; ·····, binding by the anti-*HER2/c-erbB-2* antibody, 4D5. The antibodies were first allowed to react with the cell surface. After a wash step, bound antibody was labeled by addition of fluorescein-conjugated F(ab')<sub>2</sub> fragment of goat anti-mouse immunoglobulin G. (A) Binding of the antibodies to the human breast tumor line SK-BR-3, which contains an amplification of the *HER2/c-erbB-2* gene and expresses high levels of the *HER2/c-erbB-2* gene product p185<sup>HER2</sup>. (B) Binding of the same antibodies to the human squamous epithelial cell line A431. This cell line expresses low levels of mRNA for *HER2/c-erbB-2* and high levels ( $2 \times 10^6$  receptors per cell) of the EGF receptor.

labeled protein of  $M_r$  185,000 from NIH 3T3 cells expressing p185<sup>HER2</sup> (Fig. 1, lane 8). This antibody did not cross-react with the human EGF receptor (HER1; Fig. 1, lane 5), even when overexpressed in a mouse NIH 3T3 background (Fig. 1, lane 6). Furthermore, it did not immunoprecipitate any proteins from NIH 3T3 cells transfected with a control plasmid (pCVN) which expresses the neomycin resistance and dihydrofolate reductase genes only (Fig. 1, lane 2).

To determine the nature of the epitope recognized by 4D5, NIH 3T3/HER2-3<sub>400</sub> cells were treated with tunicamycin, which prevents addition of N-linked oligosaccharides to proteins (15, 41). Cells treated with this antibiotic for 5.5 h contained two proteins which were immunoprecipitated by a polyclonal antibody against the carboxy-terminal peptide of p185<sup>HER2</sup> (Fig. 2, lane 1). The polypeptide of 170,000  $M_r$  represents unglycosylated p185<sup>HER2</sup>. The upper band of ca. 185,000  $M_r$  comigrated with glycosylated p185<sup>HER2</sup> from untreated cells (Fig. 2, lane 3). Monoclonal antibody 4D5 efficiently immunoprecipitated only the glycosylated form of p185<sup>HER2</sup> (Fig. 2, lane 2). This experiment suggests either that the epitope recognized by 4D5 consists partly of carbohydrate, or, alternatively, that the antibody recognizes a conformation of the protein achieved only when it is glycosylated.

TABLE 1. Inhibition of SK-BR-3 proliferation by anti-p185<sup>HER2</sup> monoclonal antibodies<sup>a</sup>

Monoclonal antibody	Relative cell proliferation <sup>b</sup>
7C2	79.3 ± 2.2
2C4	79.5 ± 4.4
7D3	83.8 ± 5.9
4D5	44.2 ± 4.4
3E8	66.2 ± 2.4
6E9	98.9 ± 3.6
7F3	62.1 ± 1.4
3H4	66.5 ± 3.9
2H11	92.9 ± 4.8
40.1.H1	105.8 ± 3.8
4F4	94.7 ± 2.8

<sup>a</sup> SK-BR-3 breast tumor cells were plated as described in Materials and Methods. Following adherence, medium containing 5 µg of either anti-p185<sup>HER2</sup> or control monoclonal antibodies (40.1.H1 and 4F4) per ml were added.

<sup>b</sup> Relative cell proliferation was determined by crystal violet staining of the monolayers after 72 h. Values are expressed as a percentage of results with untreated control cultures (100%).

The binding of monoclonal antibody 4D5 to human tumor cell lines was investigated by fluorescence-activated cell sorting (Fig. 3). This antibody was bound to the surface of cells expressing p185<sup>HER2</sup>. Figure 3A shows the 160-fold increase in cellular fluorescence observed when 4D5 was added to SK-BR-3 breast adenocarcinoma cells relative to a control monoclonal antibody. This cell line contains an amplified *HER2/c-erbB-2* gene and expresses high levels of p185<sup>HER2</sup> (17, 22). In contrast, the squamous carcinoma cell line A431, which expresses about  $2 \times 10^6$  EGF receptors per cell (14) but only low levels of p185<sup>HER2</sup> (4), exhibited only a twofold increase in fluorescence with 4D5 (Fig. 3B) when compared with a control monoclonal antibody.

The binding of 4D5 correlated with the levels of p185<sup>HER2</sup> expressed by these two cell lines. SK-BR-3 cells, expressing high levels of p185<sup>HER2</sup>, showed an 80-fold increase in relative fluorescence intensity compared with A431 cells. This experiment demonstrates that 4D5 specifically recognizes the extracellular domain of p185<sup>HER2</sup>.

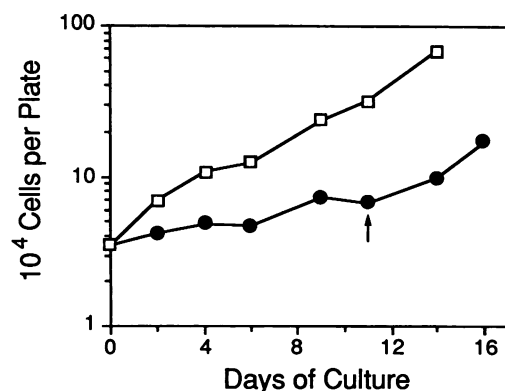


FIG. 4. Growth curve of SK-BR-3 cells treated with anti-*HER2/c-erbB-2* monoclonal antibody 4D5. Cells were plated into 35-mm culture dishes at 20,000 cells per plate in medium containing 2.5 µg of either control antibody (40.1.H1, anti-hepatitis B surface antigen) (□) or anti-p185<sup>HER2</sup> antibody 4D5 (●) per ml. On the indicated days, cells were trypsinized and counted in a Coulter counter. The determination for each time point and each antibody was done in duplicate, and the counts were averaged. The arrow indicates the day the cells were refed with medium without antibodies.

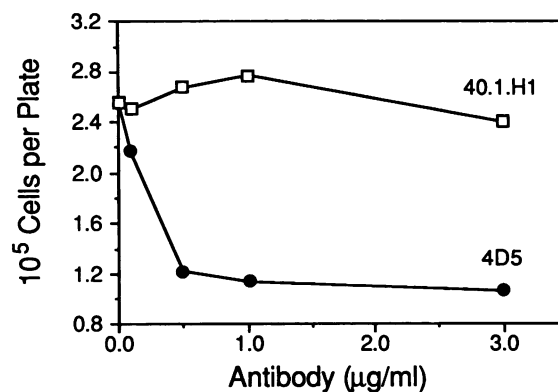


FIG. 5. Growth of SK-BR-3 cells in different concentrations of monoclonal antibody 4D5. The human breast tumor line SK-BR-3 was plated into 35-mm culture dishes at 20,000 cells per dish. Either 0.1, 0.5, 1.0, or 3.0 µg of a control monoclonal antibody (40.1.H1, anti-hepatitis B surface antigen) or monoclonal 4D5 antibody per ml was added at the time of plating. After 8 days of growth, the plates were trypsinized and the cells were counted in a Coulter counter. Each concentration of antibody was plated and counted in duplicate, and the cell numbers were averaged.

**Effects on cell proliferation.** We used the human mammary gland adenocarcinoma cell line, SK-BR-3, to determine whether monoclonal antibodies directed against the extracellular domain of p185<sup>HER2</sup> had any effect on the proliferation of cell lines overexpressing this receptorlike protein. SK-BR-3 cells were coincubated with several *HER2/c-erbB-2*-specific monoclonal antibodies or with either of two different control monoclonal antibodies (40.1.H1, directed against the hepatitis B surface antigen; 4F4, directed against recombinant human gamma interferon). Most anti-*HER2/c-erbB-2* monoclonal antibodies which recognize the extracellular domain inhibited the growth of SK-BR-3 cells (Table

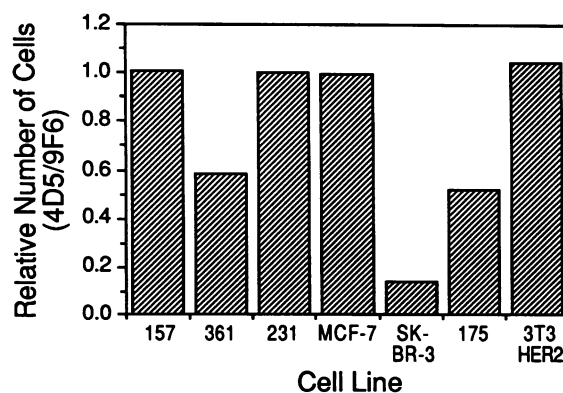


FIG. 6. Screening of breast tumor cell lines for growth inhibition by monoclonal antibody 4D5. Each cell line was plated in 35-mm culture dishes at 20,000 cells per dish. Either a control monoclonal antibody (9F6, anti-human immunodeficiency virus gp120) or the anti-p185<sup>HER2</sup> monoclonal antibody 4D5 was added on day 0 to 2.5 µg/ml. Because the different cell lines grow at different rates, the cell lines NIH 3T3/HER2-3<sub>400</sub> and SK-BR-3 were counted after 6 days, cell lines MDA-MB-157, MDA-MB-231, and MCF-7 were counted after 9 days, and cell lines MDA-MB-175VII and MDA-MB-361 were counted after 14 days. The difference in growth between cells treated with 4D5 and 40.1.H1 is expressed as the ratio of cell numbers with 4D5 versus a control monoclonal antibody, 9F6. Each cell line was assayed in duplicate for each antibody, and the counts were averaged.

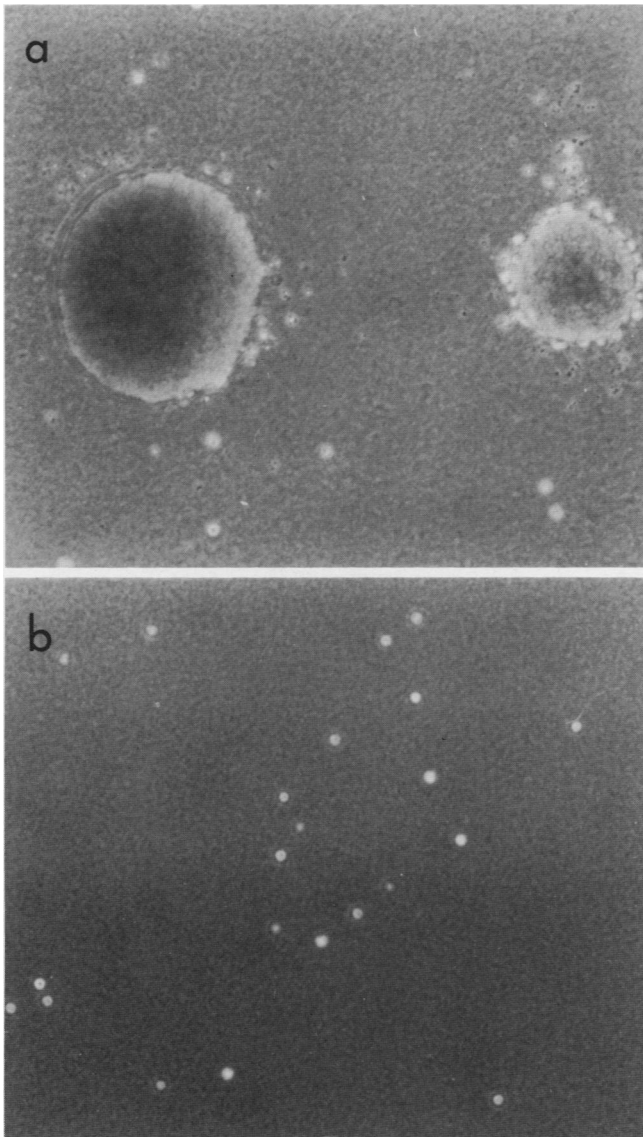


FIG. 7. Inhibition of anchorage-independent growth of NIH 3T3/HER2-3<sub>400</sub> cells by 4D5. Cells (20,000 per 60-mm plate) were plated in 0.2% soft agar over a 0.4% agar base. After 3 weeks, the plates were photographed at  $\times 100$  magnification by using a Nikon microscope with phase-contrast optics. (a) HER2-3<sub>400</sub> cells plated in agar containing 200 ng of a control antibody (TF-C8) per ml. (b) The same cells plated in agar containing 200 ng of 4D5 per ml.

1). Maximum inhibition was obtained with monoclonal antibody 4D5, which inhibited cellular proliferation by 56%. The control antibodies had no significant effect on cell growth.

Figure 4 compares the growth of SK-BR-3 cells in the presence of either a control antibody, 40.1.H1, or the anti-p185<sup>HER2</sup> antibody. Proliferation of the cells was inhibited when antibody 4D5 was present. The generation time increased from 3.2 to 12.2 days. To determine whether 4D5 treatment was cytostatic or cytotoxic, antibody was removed by medium change 11 days after treatment. The cells resumed growth at a nearly normal rate, suggesting that the antibody affected cell growth rather than cell viability. The dose-response curve (Fig. 5) showed that a concentration of 200 ng/ml inhibited growth by 50%, whereas maximum

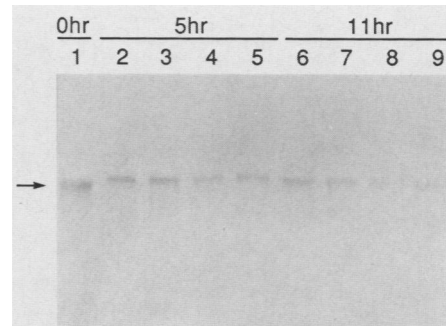


FIG. 8. Effect of antibody binding on p185<sup>HER2</sup> turnover. SK-BR-3 cells were labeled for 14 h with [<sup>35</sup>S]methionine. The label was then chased with cold methionine and either an irrelevant monoclonal antibody (40.1.H1, anti-hepatitis B surface antigen) or 4D5 was added to 2.5  $\mu$ g/ml. The cells on the plates were lysed at 0, 5, and 11 h, and <sup>35</sup>S-labeled p185<sup>HER2</sup> was quantitated by immunoprecipitation with the C-terminal specific polyclonal antibody. The 5- and 11-h time point determinations were performed in duplicate for each of the two antibodies. Proteins were separated by SDS-polyacrylamide gel electrophoresis. The fluor-treated gel was exposed to film for 4 h at room temperature. The arrow indicates the position of a protein of  $M_r$  185,000. Band intensities were quantitated by using an Ambis Systems scanner. Lanes; 1, 0 h; lanes 2 and 3, 40.1.H1 (5 h); lanes 4 and 5, 4D5 (5 h); lanes 6 and 7, 40.1.H1 (11 h); lanes 8 and 9, 4D5 (11 h).

effects were achieved by using a concentration of between 0.5 and 1  $\mu$ g/ml.

The effect of 4D5 on the proliferation of six additional breast tumor cell lines, as well as mouse NIH 3T3 fibroblasts transformed by p185<sup>HER2</sup> overexpression (NIH 3T3/HER2-3<sub>400</sub>), was tested in monolayer growth assays. Cells were plated at low density in medium containing 2.5  $\mu$ g of either a control antibody or 4D5 per ml. When the cultures approached confluency, cells were removed with trypsin and counted. 4D5 did not have any significant effect on the growth of the MCF-7, MDA-MB-157, MDA-MB-231, or NIH 3T3/HER2-3<sub>400</sub> cell lines (Fig. 6). It did, however, significantly affect the growth of the cell lines MDA-MB-361 (58% of control) and MDA-MB-175-VII (52% of control), which express high levels of p185<sup>HER2</sup> (17).

Interestingly, monoclonal antibody 4D5 had no effect on the monolayer growth of the NIH 3T3/HER2-3<sub>400</sub> cell line. However, it completely prevented colony formation by these cells in soft agar (Fig. 7), a property which had been induced by *HER2/c-erbB-2* amplification (18). In the presence of 200 ng of a control monoclonal antibody (antitissue factor, TC-C8) per ml, 116 (average of two plates) soft-agar colonies were counted, while the same cells plated simultaneously into soft agar containing 200 ng of 4D5 per ml did not yield any colonies.

**Monoclonal antibody 4D5 down-regulates p185<sup>HER2</sup>.** To determine whether the antiproliferative effect of 4D5 was due to enhanced degradation of p185<sup>HER2</sup>, we measured its rate of turnover in the presence or absence of antibody. p185<sup>HER2</sup> was metabolically labeled by culturing SK-BR-3 cells for 14 h in the presence of [<sup>35</sup>S]methionine. Cells were then chased for various times, and either a control antibody or 4D5 was added at the beginning of the chase period. At 0, 5, and 11 h, cells were lysed and p185<sup>HER2</sup> levels were assayed by immunoprecipitation and SDS-polyacrylamide gel electrophoresis. p185<sup>HER2</sup> is degraded more rapidly after exposure of SK-BR-3 cells to 4D5 (Fig. 8). Densitometric evaluation of the data showed that the p185<sup>HER2</sup> half-life of

# Explore Litigation Insights

Docket Alarm provides insights to develop a more informed litigation strategy and the peace of mind of knowing you're on top of things.

## Real-Time Litigation Alerts



Keep your litigation team up-to-date with **real-time alerts** and advanced team management tools built for the enterprise, all while greatly reducing PACER spend.

Our comprehensive service means we can handle Federal, State, and Administrative courts across the country.

## Advanced Docket Research



With over 230 million records, Docket Alarm's cloud-native docket research platform finds what other services can't. Coverage includes Federal, State, plus PTAB, TTAB, ITC and NLRB decisions, all in one place.

Identify arguments that have been successful in the past with full text, pinpoint searching. Link to case law cited within any court document via Fastcase.

## Analytics At Your Fingertips



Learn what happened the last time a particular judge, opposing counsel or company faced cases similar to yours.

Advanced out-of-the-box PTAB and TTAB analytics are always at your fingertips.

## API

Docket Alarm offers a powerful API (application programming interface) to developers that want to integrate case filings into their apps.

## LAW FIRMS

Build custom dashboards for your attorneys and clients with live data direct from the court.

Automate many repetitive legal tasks like conflict checks, document management, and marketing.

## FINANCIAL INSTITUTIONS

Litigation and bankruptcy checks for companies and debtors.

## E-DISCOVERY AND LEGAL VENDORS

Sync your system to PACER to automate legal marketing.