

# Disabling Immune Tolerance by Programmed Death-1 Blockade With Pidilizumab After Autologous Hematopoietic Stem-Cell Transplantation for Diffuse Large B-Cell Lymphoma: Results of an International Phase II Trial

Philippe Armand, Arnon Nagler, Edie A. Weller, Steven M. Devine, David E. Avigan, Yi-Bin Chen, Mark S. Kaminski, H. Kent Holland, Jane N. Winter, James R. Mason, Joseph W. Fay, David A. Rizzieri, Chitra M. Hosing, Edward D. Ball, Joseph P. Uberti, Hillard M. Lazarus, Markus Y. Mapara, Stephanie A. Gregory, John M. Timmerman, David Andorsky, Reuven Or, Edmund K. Waller, Rinat Rotem-Yehudar, and Leo I. Gordon

See accompanying article on page 4268

Author affiliations appear at the end of this article.

Published online ahead of print at [www.jco.org](http://www.jco.org) on October 14, 2013.

P.A. was supported by an American Society of Hematology (ASH) Scholar Award and by an American Society of Clinical Oncology/Conquer Cancer Foundation Career Development Award.

D.A.R. was supported by an ASH Scholar Award.

P.A. and A.N. contributed equally to this work.

Authors' disclosures of potential conflicts of interest and author contributions are found at the end of this article.

Clinical trial information: NCT00532259.

Corresponding author: Leo I. Gordon, MD, Northwestern University Feinberg School of Medicine and the Robert H. Lurie Comprehensive Cancer Center, 676 North St Clair Street, Suite 850, Chicago, IL 60611-3008; e-mail: [l-gordon@northwestern.edu](mailto:l-gordon@northwestern.edu).

© 2013 by American Society of Clinical Oncology

0732-183X/13/3133w-4199w/\$20.00

DOI: 10.1200/JCO.2012.48.3685

## ABSTRACT

### Purpose

The Programmed Death-1 (PD-1) immune checkpoint pathway may be usurped by tumors, including diffuse large B-cell lymphoma (DLBCL), to evade immune surveillance. The reconstituting immune landscape after autologous hematopoietic stem-cell transplantation (AHSCT) may be particularly favorable for breaking immune tolerance through PD-1 blockade.

### Patients and Methods

We conducted an international phase II study of pidilizumab, an anti-PD-1 monoclonal antibody, in patients with DLBCL undergoing AHSCT, with correlative studies of lymphocyte subsets. Patients received three doses of pidilizumab beginning 1 to 3 months after AHSCT.

### Results

Sixty-six eligible patients were treated. Toxicity was mild. At 16 months after the first treatment, progression-free survival (PFS) was 0.72 (90% CI, 0.60 to 0.82), meeting the primary end point. Among the 24 high-risk patients who remained positive on positron emission tomography after salvage chemotherapy, the 16-month PFS was 0.70 (90% CI, 0.51 to 0.82). Among the 35 patients with measurable disease after AHSCT, the overall response rate after pidilizumab treatment was 51%. Treatment was associated with increases in circulating lymphocyte subsets including PD-L1E-bearing lymphocytes, suggesting an on-target *in vivo* effect of pidilizumab.

### Conclusion

This is the first demonstration of clinical activity of PD-1 blockade in DLBCL. Given these results, PD-1 blockade after AHSCT using pidilizumab may represent a promising therapeutic strategy in this disease.

*J Clin Oncol* 31:4199-4206. © 2013 by American Society of Clinical Oncology

## INTRODUCTION

PD-1 (Programmed Death-1) is a member of the B7 receptor family. Together with its ligands (PD-L1 and PD-L2), it functions as an important checkpoint in the regulation of immune responses.<sup>1</sup> Those ligands are upregulated by the inflammatory environment and inhibit the function of PD-1-bearing lymphocytes. Thus the PD-1 immune checkpoint pathway serves to dampen peripheral lymphocyte activity in the context of inflammatory responses. This pathway seems to be co-opted by many tumors, preventing effective antitumor im-

munity, and therefore represents a promising therapeutic target, as demonstrated in several solid tumor subtypes.<sup>2-5</sup> Pidilizumab (CureTech, Yavne, Israel) is an anti-PD-1 humanized immunoglobulin G1 monoclonal antibody with preclinical antitumor activity in animal models.<sup>6-8</sup> In a phase I trial in patients with advanced hematologic malignancies, pidilizumab showed a favorable safety profile and early evidence of clinical activity.<sup>9</sup>

We conducted an international phase II study of pidilizumab in patients with diffuse large B-cell lymphoma (DLBCL) and primary mediastinal large B-cell lymphoma (PMBCL) after autologous

**Table 1. Baseline Patient Characteristics (eligible patients)**

Variable	Total No.*	%
No. of patients	66	
Age, years		
Median	57	
Range	19-80	
Race		
Asian	7	11
Black	3	5
White	52	79
Hispanic	4	6
Country		
Chile	1	1
India	3	4
Israel	7	11
United States	55	83
Sex		
Male	43	65
Female	23	35
Disease		
De novo DLBCL	49	74
PMBCL	4	6
Transformed indolent B-NHL	13	20
IPI score at diagnosis		
0-1	15	23
2	11	17
3	7	11
4-5	7	11
Unknown	26	39
Response to first-line therapy		
Complete remission	45	68
Partial remission	15	23
Stable or progressive disease	5	8
Unknown	1	1
Time from diagnosis to AHSTC, months		
Median	25	
Range	8-186	
Characteristics at relapse		
Stage†		
I	6	9
II	8	12
III	9	14
IV	18	27
Bulky‡	18	27
Extranodal involvement§	18	27
Marrow involvement	29	44
IPI¶		
0-1	13	20
2	7	11
3	8	12
4-5	2	3
No. of prior treatments		
1	3	5
2	47	71
3	13	20
4	3	5
Rituximab use		
With first-line therapy	56	85
With salvage therapy	54	82
With conditioning	10	15
Radiation after transplantation	5	8

(continued in next column)

**Table 1. Baseline Patient Characteristics (eligible patients) (continued)**

Variable	Total No.*	%
Response to salvage therapy by PET		
Negative	31	47
Positive	24	36
PET not done	11	17
Status before pidilizumab treatment#		
By CT imaging		
CR	31	47
Not in CR	35	53
By PET imaging		
Negative	45	68
Positive	9	18
PET not done/missing	12	14

Abbreviations: AHSTC, autologous hematopoietic stem-cell transplantation; B-NHL, B-cell non-Hodgkin lymphoma; CR, complete remission; CT, computed tomography; DLBCL, diffuse large B-cell lymphoma; IPI, International Prognostic Index; PET, positron emission tomography; PMBCL, primary mediastinal B-cell lymphoma; PR, partial remission; SD, stable disease.  
 \*Percentages may not add to 100 because of rounding. Denominator used was all patients, including those with missing data.  
 †Data missing on 25 patients.  
 ‡Data missing on nine patients.  
 §Data missing on 10 patients.  
 ||Marrow biopsy was not performed on three patients; results were determined at time of diagnosis for primary refractory patients (SD+PD) or at last relapse before transplant for the others.  
 ¶Data missing on 36 patients.  
 #CT was required per protocol and used for eligibility determination; PET was obtained at the discretion of the treating clinician and not used for eligibility determination.

hematopoietic stem-cell transplantation (AHSTC). PD-L1 is expressed on suppressor immune cells in the tumor microenvironment and in at least a subset of DLBCL and PMBCL tumors,<sup>10-13</sup> where it may alter the composition and function of tumor-infiltrating lymphocytes,<sup>14</sup> and therefore represents a valid therapeutic target.<sup>11,12</sup> Moreover, the post-AHSTC setting may be a particularly fertile context for PD-1 blockade. This is a state of low-volume residual disease, during which there is a remodeling of the immune system. Indeed, the majority of the circulating leukocytes in the first few months after AHSTC are natural killer cells, CD45RO+ memory/effector cells, and monocytes, which comprise pidilizumab's target populations and whose presence in DLBCL tumors has been associated with a favorable prognosis.<sup>15-17</sup> Therefore, PD-1 blockade early after AHSTC for patients with DLBCL may prevent a tumor-dependent, PD-1 driven exhaustion of antitumor lymphocytes, leading to eradication of residual disease and improvement in progression-free survival (PFS).

**PATIENTS AND METHODS**

**Patients**

Patients 18 years and older could be consented for this study if they planned or had undergone AHSTC for DLBCL, PMBCL, or transformed indolent B-cell non-Hodgkin lymphoma. Only patients with chemotherapy-sensitive disease (at least partial remission<sup>18</sup> after salvage therapy by computed tomography [CT] scans) were eligible. Confirmatory screening was performed between 30 and 90 days after AHSTC. To enroll onto the study and receive treatment, patients had to have CT scans before first drug administration showing no evidence of progressive disease (PD) from pretransplant assessment, as well as normal hematologic, renal, hepatic, and cardiac function. Patients with type 1 diabetes, immune deficiency, active autoimmune disease,

PD-1 Blockade for DLBCL After AHST

Table 2. Adverse Events

Event	Severity Grade											
	All Grades		1		2		3		4		5	
	No. of Patients	No. of Events	No. of Patients	No. of Events	No. of Patients	No. of Events	No. of Patients	No. of Events	No. of Patients	No. of Events	No. of Patients	No. of Events
Any AE	69	613	65	392	49	145	30	60	9	14	1*	1
Neutropenia	19	25	3	3	7	7	9	10	5	5	—	—
Fatigue	18	21	16	19	2	2	—	—	—	—	—	—
Upper respiratory tract infection	14	15	9	10	5	5	—	—	—	—	—	—
Diarrhea	12	19	10	14	4	5	—	—	—	—	—	—
Cough	12	14	11	13	1	1	—	—	—	—	—	—
Thrombocytopenia	10	15	5	6	—	—	4	5	2	4	—	—
Hyperglycemia	9	12	8	10	2	2	—	—	—	—	—	—
Leukopenia	9	12	6	8	3	3	1	1	—	—	—	—
Anemia	—	—	—	—	—	—	3	3	—	—	—	—
Pyrexia	—	—	—	—	—	—	2	2	—	—	—	—
Renal failure	—	—	—	—	—	—	2	2	—	—	—	—
Vomiting	—	—	—	—	—	—	1	2	—	—	—	—
Lymphopenia	—	—	—	—	—	—	1	1	—	—	—	—
Cardiac arrest	—	—	—	—	—	—	1	1	—	—	—	—
Duodenal ulcer	—	—	—	—	—	—	1	1	—	—	—	—
GI hemorrhage	—	—	—	—	—	—	1	1	—	—	—	—
General physical health decline	—	—	—	—	—	—	1	1	—	—	—	—
Pain	—	—	—	—	—	—	1	1	—	—	—	—
<i>Clostridium difficile</i> colitis	—	—	—	—	—	—	1	1	—	—	—	—
Herpes zoster	—	—	—	—	—	—	1	1	—	—	1	1
Lobar pneumonia	—	—	—	—	—	—	1	1	—	—	—	—
Urinary tract infection	—	—	—	—	—	—	1	1	—	—	—	—
Vascular injury	—	—	—	—	—	—	1	1	—	—	—	—
Accident	—	—	—	—	—	—	—	—	1	1	—	—
Fall	—	—	—	—	—	—	1	1	—	—	—	—
Pelvic fracture	—	—	—	—	—	—	1	1	—	—	—	—
Head injury	—	—	—	—	—	—	—	—	1	1	—	—
Facial bone fracture	—	—	—	—	—	—	1	1	—	—	—	—
aPTT prolonged	—	—	—	—	—	—	1	1	—	—	—	—
Hypophosphatemia	—	—	—	—	—	—	1	1	—	—	—	—
Bone pain	—	—	—	—	—	—	1	1	—	—	—	—
Myositis	—	—	—	—	—	—	1	1	—	—	—	—
Rhabdomyolysis	—	—	—	—	—	—	1	1	—	—	—	—
Myelodysplastic syndrome	—	—	—	—	—	—	—	—	1†	1	—	—
Glioma	—	—	—	—	—	—	1	1	—	—	—	—
Intracranial hemorrhage	—	—	—	—	—	—	—	—	1	1	—	—
Subarachnoid hemorrhage	—	—	—	—	—	—	—	—	1	1	—	—
Headache	—	—	—	—	—	—	1	1	—	—	—	—
Tachypnea	—	—	—	—	—	—	1	1	—	—	—	—
COPD	—	—	—	—	—	—	1	1	—	—	—	—
ARDS	—	—	—	—	—	—	1	1	—	—	—	—
Pneumothorax	—	—	—	—	—	—	—	—	1	1	—	—
Hyperhidrosis	—	—	—	—	—	—	1	1	—	—	—	—
Cholecystectomy	—	—	—	—	—	—	1	1	—	—	—	—
DVT	—	—	—	—	—	—	1	1	—	—	—	—
Hypertension	—	—	—	—	—	—	1	1	—	—	—	—
Hypotension	—	—	—	—	—	—	1	1	—	—	—	—

NOTE. Data are shown as number of patients with a given AE and number of events. Only AEs representing ≥ 2% of total events are shown for grade 1 and 2 events.

Abbreviations: AE, adverse event; aPTT, activated partial thromboplastin time; ARDS, acute respiratory distress syndrome; COPD, chronic obstructive pulmonary disorder; DVT, deep venous thrombosis.

\*One patient developed fatal disseminated zoster infection during the follow-up period.

†One patient with pre-existing leukopenia and thrombocytopenia developed myelodysplasia 13 months after the last dose of pidilizumab. This was considered unrelated to study drug.

CNS involvement by lymphoma, active infection, other serious illness, concurrent investigational treatment, or performance status more than 1 were excluded, as were pregnant or nursing patients.

Patients were recruited at 30 centers in the United States, Israel, Chile, and India. All patients provided written informed consent. The study was approved by the offices for human research studies at the participating institution and conducted in accordance with the principles of the Declaration of Helsinki. The study was supported by CureTech, and the data were analyzed by three of the authors (P.A., E.A.W., and L.I.G.) and by CureTech.

### Treatment and Monitoring

Patients received treatment with pidilizumab administered intravenously at a dose of 1.5 mg/kg every 42 days for three cycles, beginning 30 to 90 days from AHSCT. Premedication consisted of acetaminophen or ibuprofen, as well as diphenhydramine or promethazine. Patients were restaged with CT scans (with or without positron emission tomography [PET] scans, at the discretion of the treating clinicians) at confirmatory screening, then before the second and third cycles, and at 30, 44, and 69 weeks from the first day of treatment. Treatment was stopped if there was evidence of PD based on standard criteria.<sup>18</sup> Patients were observed until 16 months from first pidilizumab treatment, which corresponded to approximately 18 months from AHSCT. For patients with measurable disease at post-AHSCT screening, response to pidilizumab treatment was assessed<sup>18</sup> according to the restaging schedule described previously, using the post-AHSCT measurements as the pretreatment baseline. Toxicity was graded using National Cancer Institute Common Terminology Criteria of Adverse Events v3.0.

### Correlative Studies

Blood samples collected from all treatment sites from patients treated at least once with pidilizumab were analyzed by flow cytometry at two central laboratories of Esoterix LabCorp Services (Austin, TX) using study-specific validated methodologies. Forty-one prospectively specified leukocyte subsets based on cluster of differentiation marker expression were evaluated for absolute (per microliter) and relative numbers, as well as molecules of equivalent soluble fluorochrome (MESF). Validation studies for marker stability and inter- and intra-assay precision were conducted before initiating the tests in this study.

### Statistical Considerations

The primary end point of this study was the 16-month progression-free proportion from the time of first pidilizumab administration among all eligible patients who received at least one dose of pidilizumab. Secondary end points included safety and toxicity, PFS, and overall survival (OS); immunogenicity of pidilizumab; and immune subset analyses. OS was defined as the time from first treatment to death, and PFS as the time to death, relapse, or

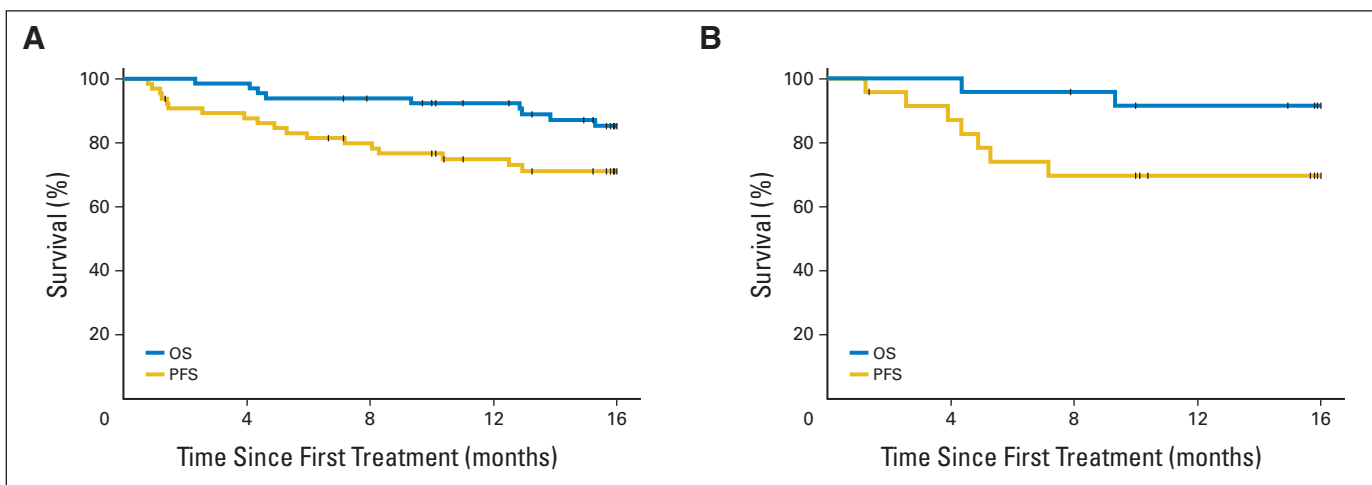
progression. OS and PFS were calculated using the Kaplan-Meier method. On the basis of data available at the time of study design, the 18-month PFS after transplantation for chemosensitive patients was estimated to be approximately 60% to 65%.<sup>19,20</sup> This time corresponds to approximately 16 months from the planned start of pidilizumab on this trial. Because the number of patients enrolled was anticipated to range from 64 to 80 patients, an observed 16-month PFS from start of pidilizumab of at least 69% was considered to warrant further study. This design had at least 87% probability of concluding the treatment promising if the true 16-month PFS was 75% and less than 10% probability if the true 16-month PFS was 60% (given the exact binomial distribution applied to all possible sample sizes between 64 and 80 patients). Patients were eligible if they met all eligibility criteria and received at least one dose of pidilizumab.

For exploratory measurements of changes in immune subsets, we compared absolute numbers of prespecified circulating lymphocytes of a given immunophenotype before the first treatment and at 24 hours, 6, 12, and 16 weeks afterwards. We also measured MESF to assess for change in surface expression of selected markers. Pre- and post-treatment values were compared using paired Wilcoxon signed rank testing for individual time points, adjusted for multiple comparisons, as well as repeated measures analysis using a log<sub>10</sub> transformation (with SAS proc mixed). All *P* values are two-tailed, using a threshold for statistical significance of .05 except as noted. The data were analyzed using SAS version 9.2 (SAS Institute, Cary, NC).

## RESULTS

### Patients

Patients could sign consent before or after AHSCT, but were required to pass confirmatory screening to be enrolled onto the study and treated. Among the 97 patients who gave consent, 25 were screen failures at confirmatory screening (including six with PD, five on concurrent disallowed treatment, four who withdrew consent, two with CNS disease, and two with infection). Therefore, 72 patients received at least one dose of pidilizumab (treated subset) at a median of 2.6 months after AHSCT (range, 1.1 to 4.1 months). Sixty patients (83%) completed all three cycles. Ten patients withdrew from the study before the 16-month follow-up visit for reasons other than death or progression: loss to follow-up (*n* = 2), investigator decision (*n* = 3), withdrawal of consent (*n* = 3), protocol violation (*n* = 1), and adverse event (AE; *n* = 1). On final review, six patients were



**Fig 1.** Progression-free survival (PFS) and overall survival (OS) after pidilizumab treatment. (A) PFS and OS of all eligible patients. (B) PFS and OS of the 24 eligible patients who remained positive on positron emission tomography after salvage therapy.

determined ineligible (four because of refractoriness to salvage therapy, one for PD on the first day of treatment, and the other for disallowed concomitant treatments). The baseline characteristics of the 66 eligible patients are shown in Table 1. At the time of post-AHST restaging, 47% of patients were in complete remission (CR) by CT. Fifty-five patients had a PET scan after salvage; 31 (47%) were in PET-CR. Fifty-four patients had a post-AHST PET scan; 45 (68%) were in PET-CR at that time.

**Safety and Toxicity**

Among all 72 treated patients, a total of 613 AEs occurred in 69 (96%) of patients (Table 2), among which 135 were considered related to treatment. The most frequently reported grade 3 to 4 AEs were neutropenia (19% of patients) and thrombocytopenia (8%). All patients with grade 4 neutropenia responded to growth factor treatment and remained asymptomatic. One patient died of disseminated herpes zoster 10 months after the third dose of pidilizumab, which was considered unrelated to study treatment. Twenty-three patients (32%) experienced at least one serious AE, and three patients (4%) experienced a related serious AE. There was no evidence of significant autoimmune toxicity, no infusion reactions, and no treatment-related mortality.

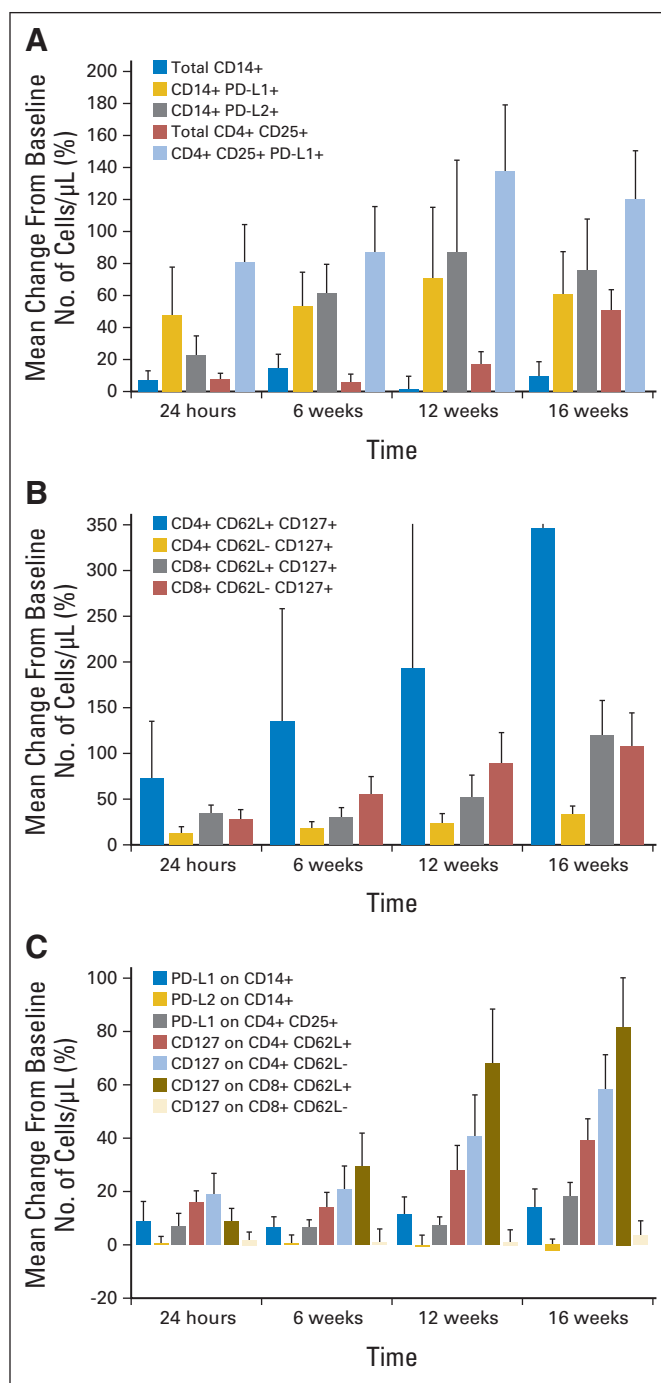
**Clinical Outcome**

Among the 66 eligible patients, 18 experienced disease progression or died before the 16-month time point. The 16-month PFS from first treatment (the primary end point) was 0.72 (90% CI, 0.60 to 0.82; Fig 1A). The study therefore met its primary end point. Nine patients died during the study period between 2.3 and 15.3 months; the cause of death was lymphoma in eight patients and disseminated herpes zoster in one patient. The 16-month OS for eligible patients was 0.85 (90% CI, 0.74 to 0.92; Fig 1A). Among the 24 patients who remained PET-positive at the conclusion of salvage therapy, 16-month PFS was 0.70 (90% CI, 0.51 to 0.82; Fig 1B). Among the 31 PET-negative patients, 16-month PFS was 0.72 (90% CI, 0.56 to 0.84); among the 11 patients who did not have a postsalvage PET scan, 16-month PFS was 0.72 (90% CI, 0.42 to 0.88). No significant difference was detected in the PFS or OS between patients when stratified by disease status assessed by CT scans after AHST, age, time to first relapse, time from diagnosis to AHST, or salvage regimen; however, there was limited power for those comparisons. We also performed an intent-to-treat analysis for the 72 treated patients. The PFS at 16 months from first pidilizumab treatment in this cohort was 0.68 (90% CI, 0.59 to 0.77), and OS was 0.84 (90% CI, 0.77 to 0.91).

Among the 35 eligible patients with measurable disease at screening post-AHST and before the first dose of pidilizumab, 12 (34%) achieved a CR by CT criteria after pidilizumab treatment, and six (17%) achieved a partial remission (PR), for an overall response rate of 51%. In addition, 13 patients (37%) had stable disease, whereas four (11%) had PD. The median time to documented response was 30 weeks (range, 6 to 69 weeks). Among the nine patients who had residual disease after AHST and a positive PET scan, the overall response rate was 33%, and an additional 44% had stable disease.

**Immune Subset Analyses**

Figure 2 and Table 3 detail changes in selected lymphocyte subsets and marker expression among eligible patients. Treatment with



**Fig 2.** Changes in absolute number of circulating lymphocyte subsets and surface marker expression after pidilizumab administration. (A) Changes in circulating number of PD-L1 (B7-H1) and PD-L2 (B7-DC) –positive monocytes and T cells. (B) Changes in circulating number of peripheral and central memory CD8 T cells. (C) Changes in expression of selected surface markers on monocytes and T cells.

pidilizumab resulted in a significant increase in the absolute number of PD-L1-bearing activated helper T cells (CD4<sup>+</sup> CD25<sup>+</sup> PD-L1<sup>+</sup>), apparent 24 hours after first treatment and sustained until at least 16 weeks (Fig 2A). There also seemed to be some changes in PD-1 ligand-bearing monocytes (CD14<sup>+</sup> PD-L1<sup>+</sup> and CD14<sup>+</sup> PD-L2<sup>+</sup> cells). For the latter subsets, the mean percentage increase was larger than the

# Explore Litigation Insights

Docket Alarm provides insights to develop a more informed litigation strategy and the peace of mind of knowing you're on top of things.

## Real-Time Litigation Alerts



Keep your litigation team up-to-date with **real-time alerts** and advanced team management tools built for the enterprise, all while greatly reducing PACER spend.

Our comprehensive service means we can handle Federal, State, and Administrative courts across the country.

## Advanced Docket Research



With over 230 million records, Docket Alarm's cloud-native docket research platform finds what other services can't. Coverage includes Federal, State, plus PTAB, TTAB, ITC and NLRB decisions, all in one place.

Identify arguments that have been successful in the past with full text, pinpoint searching. Link to case law cited within any court document via Fastcase.

## Analytics At Your Fingertips



Learn what happened the last time a particular judge, opposing counsel or company faced cases similar to yours.

Advanced out-of-the-box PTAB and TTAB analytics are always at your fingertips.

## API

Docket Alarm offers a powerful API (application programming interface) to developers that want to integrate case filings into their apps.

## LAW FIRMS

Build custom dashboards for your attorneys and clients with live data direct from the court.

Automate many repetitive legal tasks like conflict checks, document management, and marketing.

## FINANCIAL INSTITUTIONS

Litigation and bankruptcy checks for companies and debtors.

## E-DISCOVERY AND LEGAL VENDORS

Sync your system to PACER to automate legal marketing.