

[54] **SOCKET FOR MOUNTING AN IC CHIP PACKAGE ON A PRINTED CIRCUIT BOARD**

[75] Inventors: Tsutomu Fujizaki, Yokohama; Minoru Shibata, Matsuzaka, both of Japan

[73] Assignee: Matsushita Electric Works, Ltd., Japan

[21] Appl. No.: 480,908

[22] Filed: Feb. 16, 1990

[30] **Foreign Application Priority Data**

Feb. 23, 1989 [JP] Japan 1-44611
 Sep. 26, 1989 [JP] Japan 1-112424[U]

[51] Int. Cl.⁵ H01R 9/09

[52] U.S. Cl. 439/73; 439/81; 439/83; 439/828

[58] Field of Search 439/72, 73, 78, 81, 439/83, 826, 828

[56] **References Cited**

U.S. PATENT DOCUMENTS

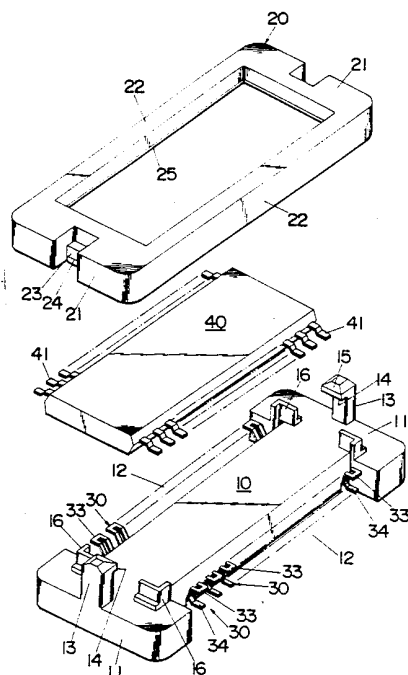
| | | | |
|-----------|---------|-----------------------|-----------|
| 4,110,917 | 9/1978 | Le Grelle | 439/83 |
| 4,252,390 | 2/1981 | Bowling | 439/73 |
| 4,417,777 | 11/1983 | Bamford | 339/17 CF |
| 4,422,128 | 12/1983 | Zurlinden et al. | 439/83 |
| 4,491,377 | 1/1985 | Pfaff | 339/17 CF |
| 4,555,153 | 11/1985 | Bricaud et al. | 439/81 |
| 4,682,829 | 7/1987 | Kunkle et al. | 439/83 |
| 4,758,176 | 7/1988 | Abe et al. | 439/73 |
| 4,824,392 | 4/1989 | Billman et al. | 439/73 |

Primary Examiner—Paula A. Bradley
 Attorney, Agent, or Firm—Stevens, Davis, Miller & Mosher

[57] **ABSTRACT**

A socket for mounting IC chip package on a printed circuit board has an elongated socket body having a plurality of contact elements aligned along the length of the socket body for contact with corresponding one of leads extending laterally from the IC chip package. A cover frame is fitted over the socket body to press the IC chip leads against the corresponding contact elements for positive electrical connection therebetween. The socket body carries between the longitudinal ends thereof the contact elements and is engaged at the longitudinal ends with the cover frame. Each contact element is struck from a metal strip to include a base and an anchor leg extending from one end of the base to be bent into the socket body, the other end of the base extending laterally and being bifurcated to form a vertically spaced pair of a spring leg for contact with the corresponding one of the IC chip leads and a terminal leg for connection with a circuit on the printed board. The socket body formed in its laterally central portion with a plurality of slots which opens to a bottom surface of the socket body and into which the anchor leg is press-fitted such that the spring leg and the terminal leg project laterally outwardly of the socket body to leave therebetween an open space available for soldering the terminal legs on the printed circuit board.

9 Claims, 5 Drawing Sheets



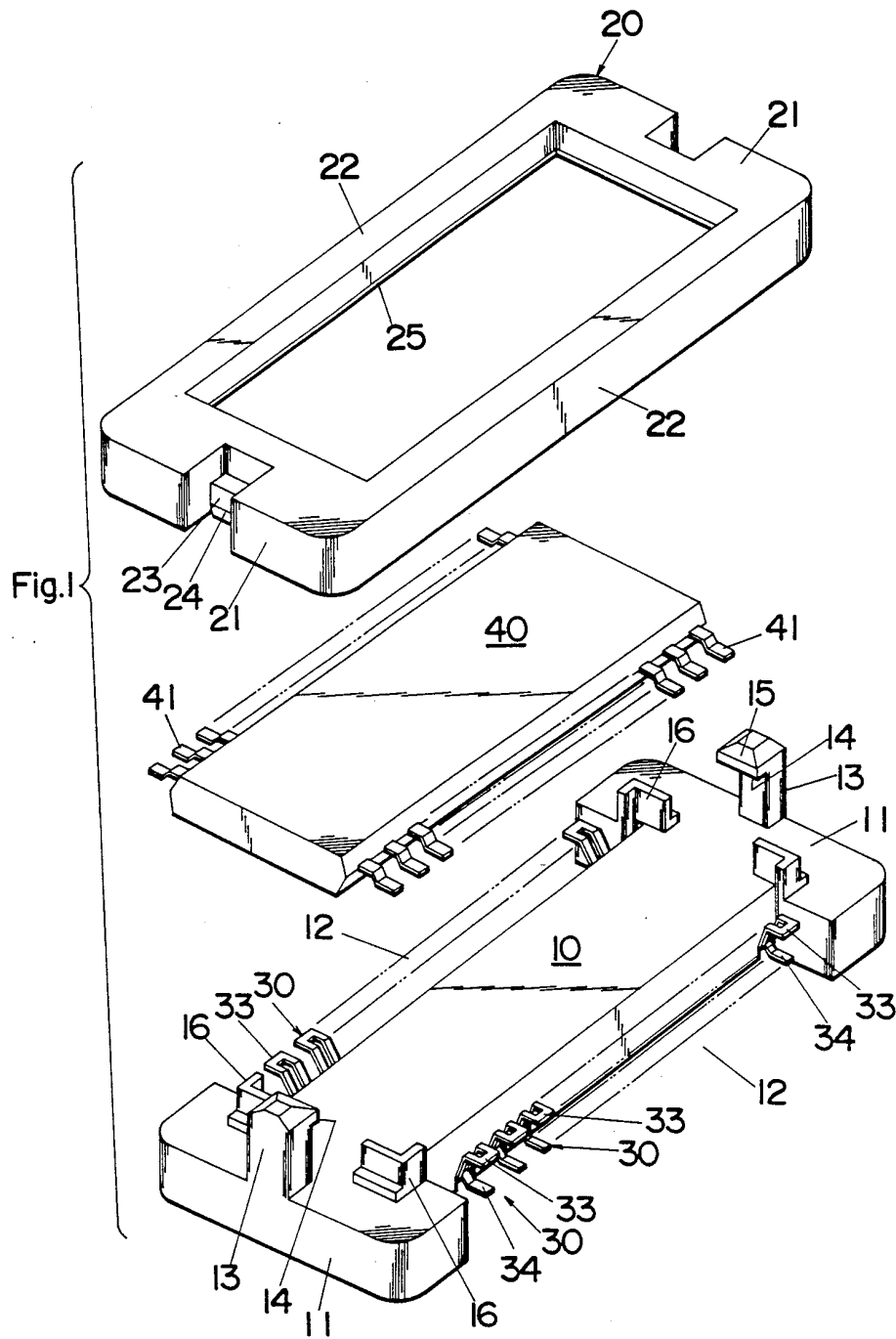


Fig.2

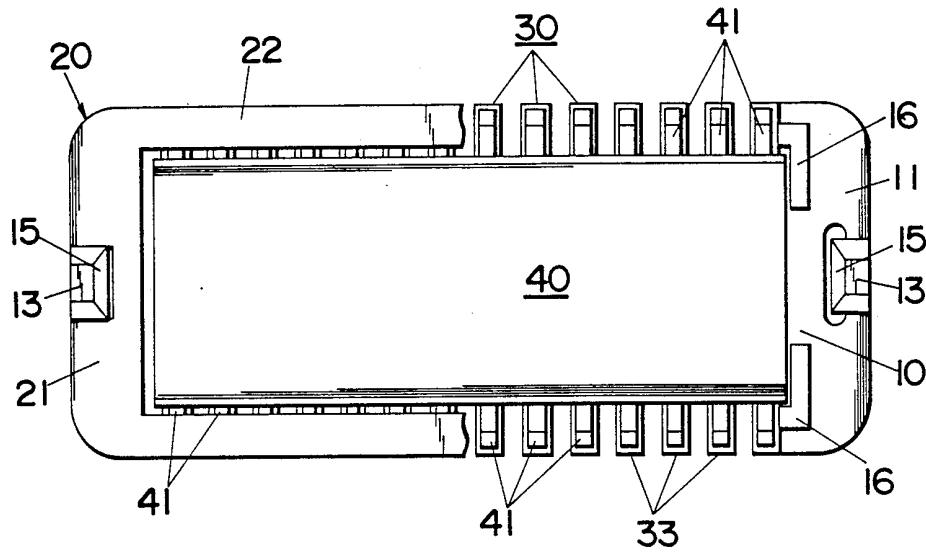


Fig.3

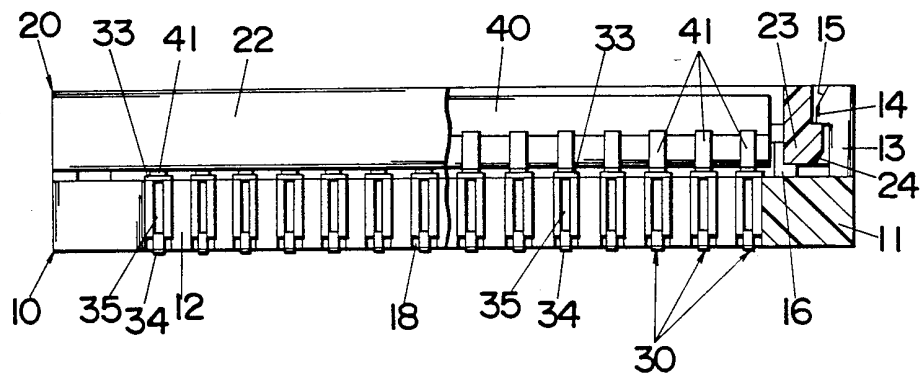


Fig.4

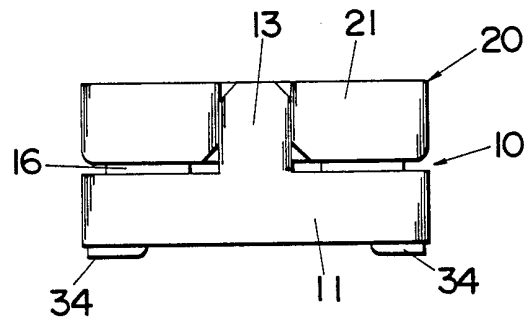


Fig.5

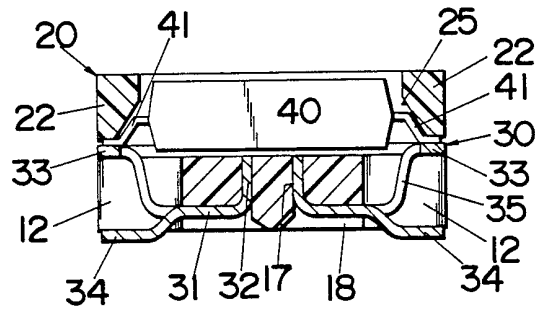


Fig.6

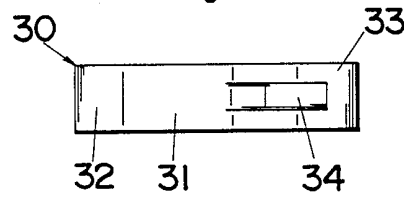
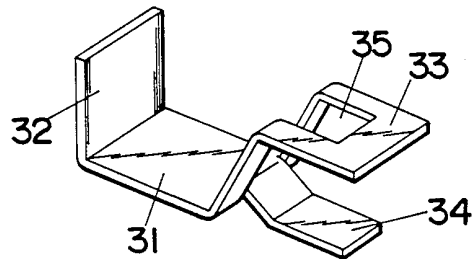
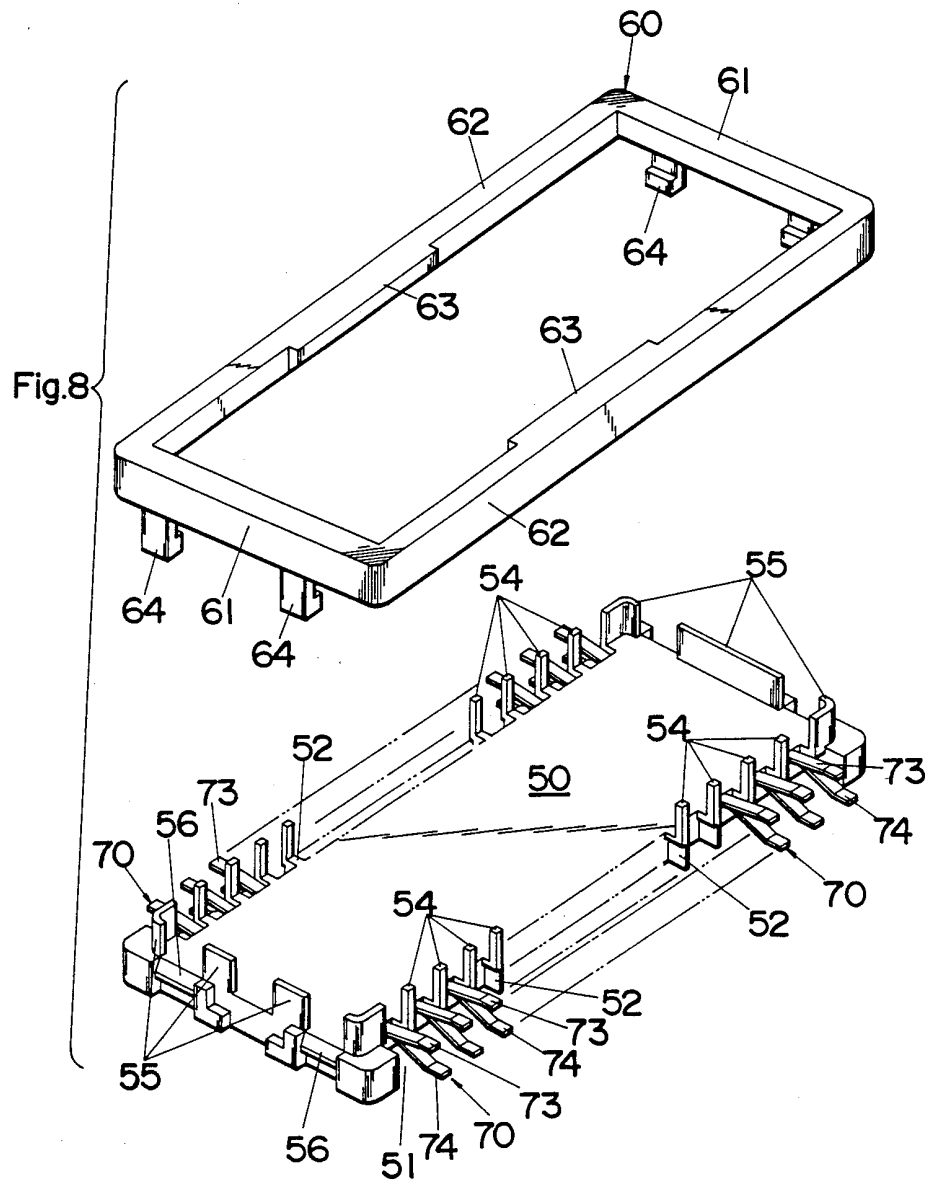


Fig.7





Explore Litigation Insights

Docket Alarm provides insights to develop a more informed litigation strategy and the peace of mind of knowing you're on top of things.

Real-Time Litigation Alerts



Keep your litigation team up-to-date with **real-time alerts** and advanced team management tools built for the enterprise, all while greatly reducing PACER spend.

Our comprehensive service means we can handle Federal, State, and Administrative courts across the country.

Advanced Docket Research



With over 230 million records, Docket Alarm's cloud-native docket research platform finds what other services can't. Coverage includes Federal, State, plus PTAB, TTAB, ITC and NLRB decisions, all in one place.

Identify arguments that have been successful in the past with full text, pinpoint searching. Link to case law cited within any court document via Fastcase.

Analytics At Your Fingertips



Learn what happened the last time a particular judge, opposing counsel or company faced cases similar to yours.

Advanced out-of-the-box PTAB and TTAB analytics are always at your fingertips.

API

Docket Alarm offers a powerful API (application programming interface) to developers that want to integrate case filings into their apps.

LAW FIRMS

Build custom dashboards for your attorneys and clients with live data direct from the court.

Automate many repetitive legal tasks like conflict checks, document management, and marketing.

FINANCIAL INSTITUTIONS

Litigation and bankruptcy checks for companies and debtors.

E-DISCOVERY AND LEGAL VENDORS

Sync your system to PACER to automate legal marketing.