

[54] CONTROL CIRCUIT FOR A CHOPPED POWER SUPPLY WITH PROGRESSIVE START UP

[75] Inventors: Jean de Sartre, Meylan; Philippe Maige, Syssinet Pariset, both of France

[73] Assignee: Thomson-CSF, Paris, France

[21] Appl. No.: 826,986

[22] Filed: Feb. 7, 1986

[30] Foreign Application Priority Data

Feb. 8, 1985 [FR] France 85 01822

[51] Int. Cl.⁴ H02P 13/22

[52] U.S. Cl. 363/49; 363/97; 323/901

[58] Field of Search 363/20-21, 363/49, 56, 97, 131; 323/901, 908

[56] References Cited

U.S. PATENT DOCUMENTS

3,733,540	2/1972	Hawkins	363/89
3,879,647	4/1975	Hamilton et al.	363/49 X
4,195,335	3/1980	Murakami et al.	363/49
4,272,805	6/1981	Iguchi et al.	363/56 X
4,400,767	8/1983	Fenter	363/21
4,504,898	3/1985	Pilukaitis et al.	363/49

4,586,120 4/1986 Malik et al. 363/49 X

FOREIGN PATENT DOCUMENTS

0144754 11/1984 European Pat. Off. .

OTHER PUBLICATIONS

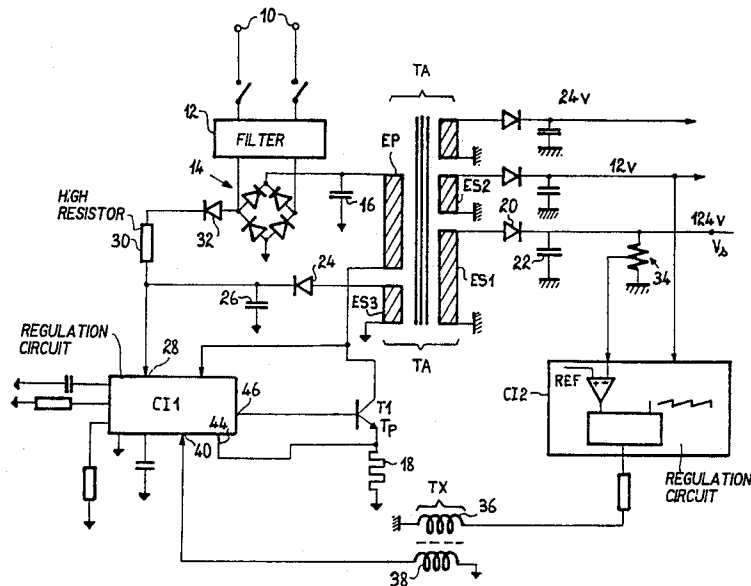
E.D.N. Electrical Design News, vol. 29, No. 18, Sep. 1984, pp. 213-220, Boston, U.S.; G. Gattavari: "Design Custom Power Sources with Switching-Regulator Chip".

Primary Examiner—Peter S. Wong
Attorney, Agent, or Firm—Oblon, Fisher, Spivak, McClelland & Maier

[57] ABSTRACT

A chopped power supply control circuit is provided intended to receive regulation control signals and to produce square waves for enabling a switch. A current comparator measures the current in the switch and opens the switch when the threshold is exceeded. Under normal operating conditions the threshold is fixed. Under start-up conditions of should a malfunction occur a threshold variation circuit causes the threshold to vary gradually from a low value to its normal value. Thus the risk of over-current at start-up is reduced.

7 Claims, 7 Drawing Figures



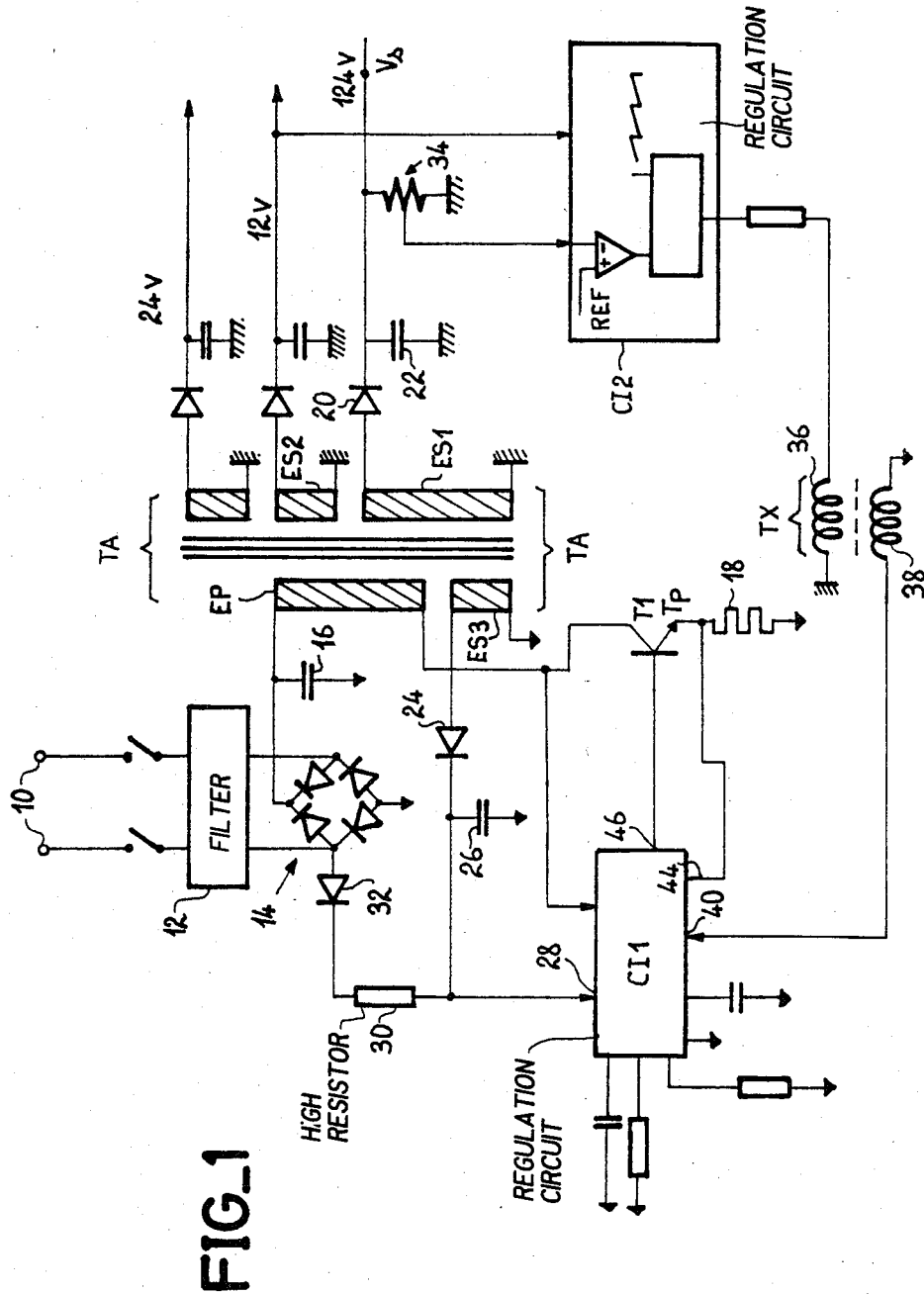
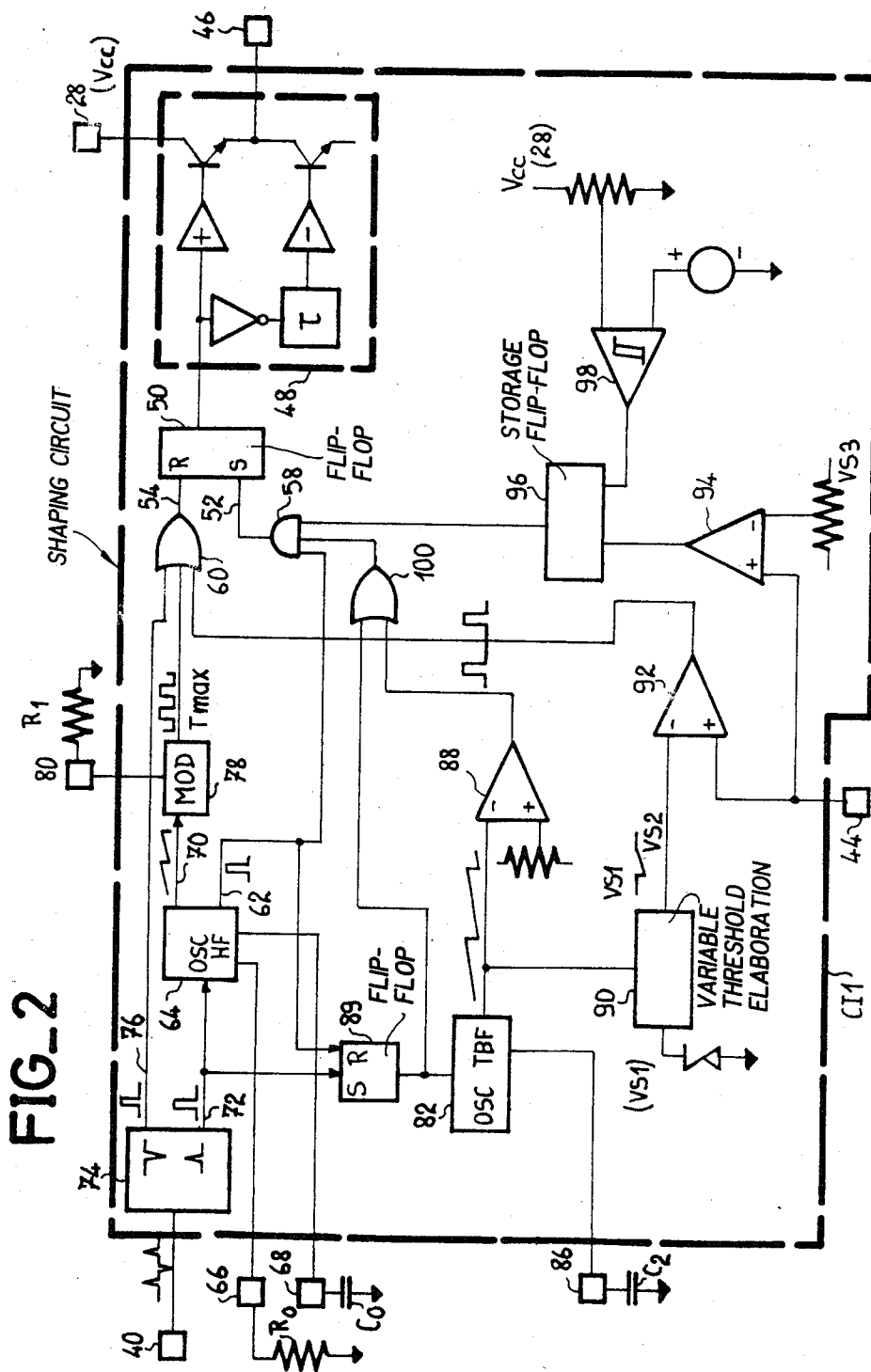
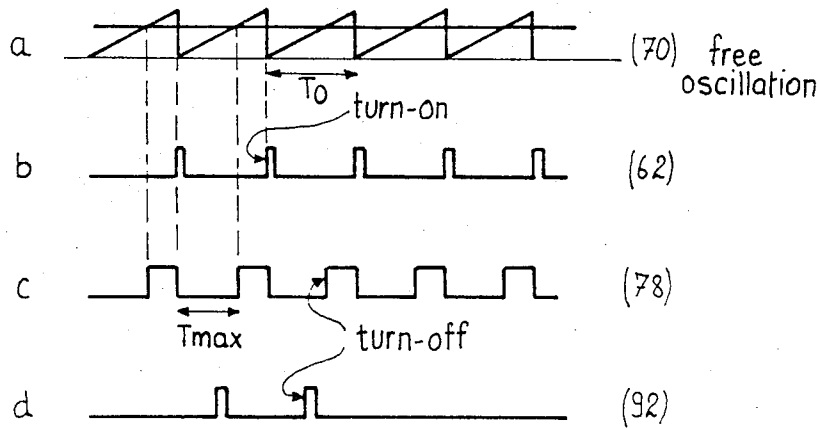


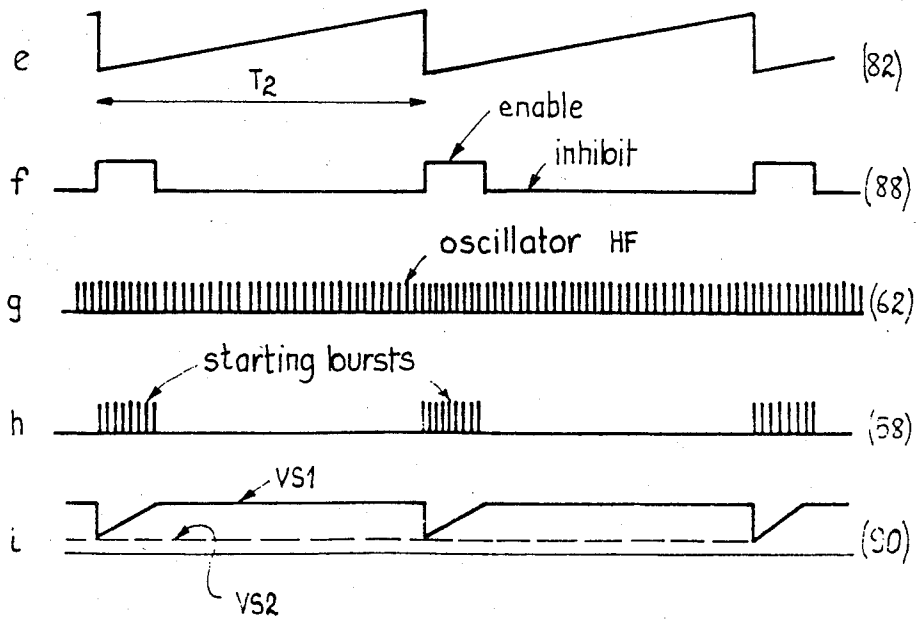
FIG. 1



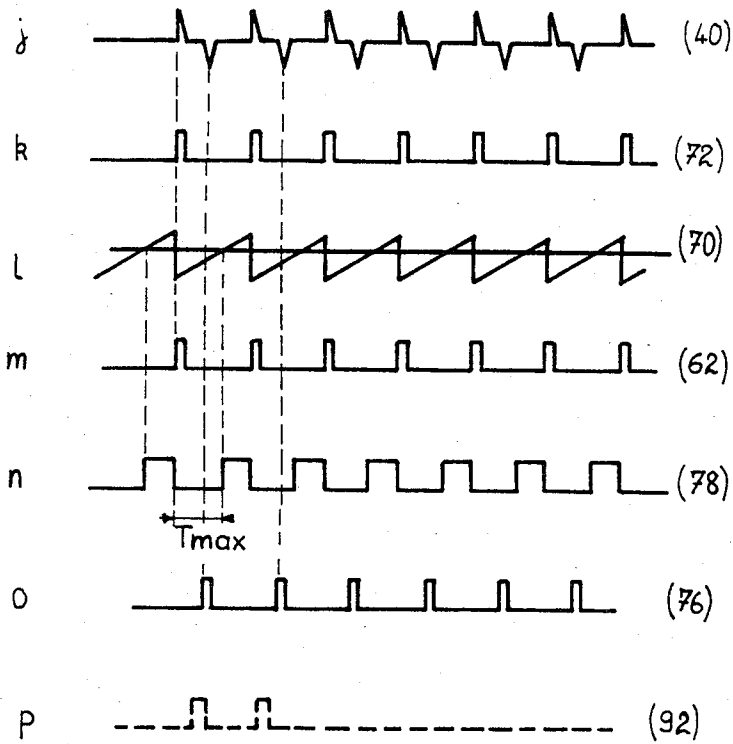
FIG_3



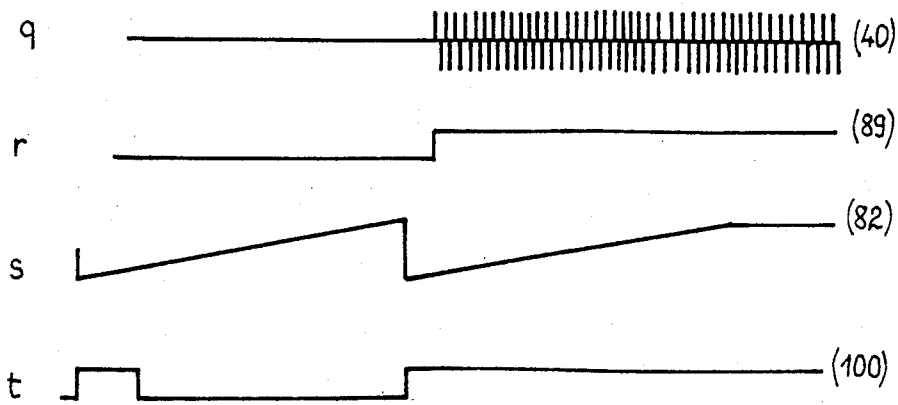
FIG_4



FIG_5



FIG_6



Explore Litigation Insights

Docket Alarm provides insights to develop a more informed litigation strategy and the peace of mind of knowing you're on top of things.

Real-Time Litigation Alerts



Keep your litigation team up-to-date with **real-time alerts** and advanced team management tools built for the enterprise, all while greatly reducing PACER spend.

Our comprehensive service means we can handle Federal, State, and Administrative courts across the country.

Advanced Docket Research



With over 230 million records, Docket Alarm's cloud-native docket research platform finds what other services can't. Coverage includes Federal, State, plus PTAB, TTAB, ITC and NLRB decisions, all in one place.

Identify arguments that have been successful in the past with full text, pinpoint searching. Link to case law cited within any court document via Fastcase.

Analytics At Your Fingertips



Learn what happened the last time a particular judge, opposing counsel or company faced cases similar to yours.

Advanced out-of-the-box PTAB and TTAB analytics are always at your fingertips.

API

Docket Alarm offers a powerful API (application programming interface) to developers that want to integrate case filings into their apps.

LAW FIRMS

Build custom dashboards for your attorneys and clients with live data direct from the court.

Automate many repetitive legal tasks like conflict checks, document management, and marketing.

FINANCIAL INSTITUTIONS

Litigation and bankruptcy checks for companies and debtors.

E-DISCOVERY AND LEGAL VENDORS

Sync your system to PACER to automate legal marketing.