

# Physical and chemical stability of paclitaxel infusions in different container types

Parastou Donyai, PhD MRPharmS<sup>1</sup>

Graham J Sewell, PhD MRPharmS<sup>1,2</sup>

**Objectives.** To determine the physicochemical stability of generic (Teva Pharmaceuticals) paclitaxel infusions (0.3 and 1.2 mg/mL) in 0.9% sodium chloride or 5% glucose in polyolefin (Viaflo<sup>®</sup>), low-density polyethylene (Ecoflac<sup>®</sup>), and glass containers at 2–8 and 25°C.

**Methods.** Paclitaxel infusions of various concentration/diluent/container combinations were prepared. Containers were light-protected and incubated at test temperatures with further analysis at predetermined intervals of 1–3 days for up to 30 days. Infusions were monitored for pH, weight loss, precipitation, colour change, and subvisual particulates as indicators of physical stability, and assayed for drug concentration to determine chemical stability.

**Results.** Precipitation was the limiting factor. Infusions of paclitaxel (0.3 mg/mL) in 0.9% sodium chloride remained stable for 13, 16 and 13 days at 2–8°C in polyolefin, low-density polyethylene and glass containers, respectively; in 5% glucose for 13, 18, and 20 days, respectively. At 25°C, paclitaxel infusions (0.3 mg/mL) remained stable for 3 days

in all diluent/container combinations with the exception of 5% glucose in glass, where stability reached 7 days. Paclitaxel infusions (1.2 mg/mL) in 0.9% sodium chloride remained stable for 9, 12, and 8 days at 2–8°C in polyolefin, low-density polyethylene and glass containers, respectively; in 5% glucose for 10, 12, and 10 days, respectively. At 25°C, paclitaxel 1.2 mg/mL remained stable for 3 days in all diluent/container combinations with the exception of glass, where stability reached 5 days in 0.9% sodium chloride diluent, and 7 days in 5% glucose.

**Conclusion.** Paclitaxel stability was influenced by storage temperature, with longer shelf-life at 2–8°C, and also by drug concentration, where 0.3 mg/mL infusions were more stable than 1.2 mg/mL for all diluent/container combinations. Physical stability (precipitation) was the limiting parameter in each case. *J Oncol Pharm Practice (2006) 12: 211–222.*

**Key words:** compatibility; generic; infusion; paclitaxel; stability

## Introduction

Paclitaxel, a potent chemotherapeutic agent, was discovered during a large-scale screening programme conducted by the National Cancer Institute in the

1960s, and was initially extracted and isolated from the bark of Western Yew (*Taxus brevifolia*).<sup>1</sup> Since its discovery, paclitaxel has been indicated in the treatment of a variety of cancers, such as advanced ovarian and breast cancer, non-small cell lung cancer and AIDS-related Kaposi's sarcoma.<sup>2–4</sup>

The extreme lipophilicity of paclitaxel,<sup>5–7</sup> presented difficulties in developing stable parenteral formulations for iv infusion. To circumvent this problem, commercially available paclitaxel injection is formulated in a 50:50 solvent mixture of cremophor EL and dehydrated ethanol.<sup>8</sup> However, cremophor EL causes severe hypersensitivity reactions in

<sup>1</sup>School of Pharmacy and Chemistry, Kingston University, Kingston upon Thames, Surrey, UK; <sup>2</sup>Plymouth Hospitals NHS Trust, Plymouth, UK

Address correspondence and reprint requests to Professor Graham Sewell, School of Pharmacy and Chemistry, Kingston University, Penrhyn Road, Kingston upon Thames, Surrey KT1 2EE, UK  
E-mail: g.j.sewell@kingston.ac.uk

patients and pre-medication with corticosteroids, antihistamines and H<sub>2</sub>-antagonists is required.<sup>9,10</sup> Furthermore, cremophor EL is incompatible with some plastics and is known to leach diethylhexylphthalate (DEHP) plasticisers from polyvinyl chloride (PVC) infusion bags and administration sets.<sup>11,12</sup> It is, therefore, recommended that paclitaxel infusion is prepared and administered in non-PVC containers.

For administration, paclitaxel concentrate is diluted in infusions of 0.9% sodium chloride or 5% dextrose to achieve a final concentration of 0.3–1.2 mg/mL.<sup>13–15</sup> Adequate physical and chemical stability of infusions under clinically relevant conditions is essential to ensure safety and efficacy. Physical stability of paclitaxel infusions is the limiting factor, resulting in precipitate formation on storage,<sup>16</sup> particularly where the paclitaxel concentration exceeds 0.6 mg/mL.<sup>17</sup> However, long-term infusion stability is required for the development of dose-banding strategies,<sup>18</sup> and to avoid wastage on occasions when treatment is delayed after the infusion has been prepared.

In this study, the stability of infusions prepared from a generic paclitaxel presentation (Teva Pharmaceuticals) was investigated. Low-density polyethylene containers were included as a non-PVC alternative to polyolefin, but with a lower environmental impact. Glass containers were included because of continued use in some European countries. The objective of this work was to determine the physical and chemical stability of paclitaxel infusion at concentrations of 0.3 and 1.2 mg/mL in 0.9% sodium chloride or 5% glucose under storage at 5 and 25°C in polyolefin infusion bags, low-density polyethylene Ecoflac<sup>®</sup> containers, and glass bottles.

## Materials and methods

### Materials

Vials containing paclitaxel 6 mg/mL (batch No. A417745, expiry 3/2007) were supplied by Teva Pharmaceuticals (Leeds, UK). The polyolefin (Viaflo<sup>®</sup>) infusion bags, containing 0.9% sodium chloride 250 mL (batch No. 03F10E1D, expiry 05/2006) and 5% glucose 250 mL (batch No. 03E24E1E, expiry 04/2006), were supplied by Baxter Healthcare (Berkshire, UK). Glass containers of 0.9% sodium chloride 250 mL (batch No. 04F0262, expiry 05/07) and 5% glucose 250 mL (batch No. 02L2171, expiry 10/05) were supplied by B Braun (Sheffield, UK). Low-density polyethylene (Ecoflac<sup>®</sup>) containers of 0.9% sodium chloride 500 mL (batch No. 4124A141,

expiry 02/2007) and 5% glucose 500 mL (batch No. 4185A142, expiry 03/2009) were supplied by B Braun Melsungen AG (Melsungen, Germany). All pharmaceuticals were used within their expiry date.

All other chemicals and reagents were of analytical grade or high-performance liquid chromatography (HPLC) grade.

### Preparation of paclitaxel infusions

All paclitaxel infusions were prepared under European Grade A aseptic conditions in a Class II safety cabinet by trained and validated personnel, in accordance with the principles of Good Manufacturing Practice. Paclitaxel infusions, at concentrations of 0.3 and 1.2 mg/mL, were prepared in 0.9% sodium chloride or 5% glucose in polyolefin, low-density polyethylene and glass containers. In each instance, a volume of the diluent equal to the volume of paclitaxel solution added was first withdrawn. After adding the drug concentrate, the containers were gently inverted to promote adequate mixing. Particular care was taken to avoid excessive agitation of test infusions.

## Methods

### Incubation of test infusions

Triplicate infusions of each concentration/diluent/container-type combination were placed in blue polythene over-wraps to protect from light and stored at the desired study temperatures using a LEC pharmacy refrigerator (5°C) or a laboratory incubator (25 ± 0.5°C). The infusions were removed at selected time intervals (see below), and equilibrated to room temperature prior to analysis (in triplicate). Samples were analysed for physical stability (pH, and weight loss, visible and subvisual particulates) and chemical stability (HPLC assay) immediately after preparation ( $t=0$ ), and subsequently at the following scheduled time intervals:

- Paclitaxel (0.3 mg/mL) in polyolefin and glass containers:  $t=0, 3, 7, 10, 13, 15, 20$  and 30 days at 2–8 and 25°C.
- Paclitaxel (1.2 mg/mL) in polyolefin and glass containers:  $t=0, 3, 5, 7, 8, 9, 10, 12$  and 14 days at 2–8 and 25°C.
- Paclitaxel (0.3 and 1.2 mg/mL) in low-density polyethylene containers:  $t=0, 3, 7, 10, 12, 14, 16, 18,$  and 20 days at 5°C and:  $t=0, 1, 3, 5, 7, 9$  and 11 days at 25°C.

**Physical stability of infusions**

The physical stability of paclitaxel was assessed using the following methods.

**pH measurement.** A combinational glass electrode and a Good-Laboratory-Practice pH meter (Hanna pH 302 series) were first calibrated using standard reference solutions of pH 4.0 and 7.0, and then used to measure the pH of infusions. Each pH was recorded as mean value of three infusions.

**Weight loss.** The infusion bags were weighed before and after sampling on a calibrated six-figure analytical balance (A&D Ltd, model AD-1131) and the percent weight increase or decrease on incubation calculated. Change in weight was recorded and expressed as mean moisture loss of three infusions.

**Visual inspection.** This was assessed under standard laboratory lighting. Each infusion was examined for any change in colour, clarity or for the presence of particulate matter.

**Subvisual particulates.** Subvisual particle counts of infusion at 10 and 25  $\mu\text{m}$  were conducted at predetermined time intervals in accordance with the method described in the British Pharmacopoeia (2000) using a Pacific Scientific light-scatter instrument. This was calibrated using certificated diameter latex spheres supplied by Pacific Scientific Ltd.

**Acceptance criteria: physical stability.** The physical stability of all paclitaxel infusions was assessed according to the following acceptance criteria. Samples passed pH testing if the value obtained was within +0.5 pH unit of the initial pH value at  $t=0$ . Weight loss can indicate loss of moisture from the container, which can potentially mask a low assay result. The acceptance limit for weight variation was set at  $\pm 3\%$  w/w of the initial infusion weight.

**Chemical stability of infusions using HPLC**

Paclitaxel concentrations were analysed using a validated stability-indicating reverse-phase HPLC method. The HPLC system consisted of a quaternary gradient pump (Jasco PU-2089 plus), an in-line degasser, autosampler (Jasco AS-2057 plus), and photodiode array detector (Jasco MD-2010 plus). Separation and quantitative analysis of paclitaxel was achieved on a 5- $\mu\text{m}$  Phenomenex  $\text{C}_8$  column (250  $\times$  4.6 mm) with the mobile phase flowing at a

rate of 1.5 mL/min and a detection wavelength of 227 nm. The acquisition run-time for each analysis was 15 minutes. Mobile phase composition for analysis contained 50% 20 mM ammonium acetate, pH 5.0:40% acetonitrile:10% methanol. Samples were diluted with water and injected in duplicate, followed by an injection of the freshly-prepared external standard using the 'bracketing' technique.

The assay was fully validated for linearity of analytical response, precision of system, precision of method, and stability-indication.

A typical chromatogram obtained by injecting a solution of paclitaxel (60  $\mu\text{g}/\text{mL}$ ) is shown in Figure 1.

**Validation of LC assay**

**Calibration curve (linearity of analytical response).** A six-point calibration curve of paclitaxel, over the range 15–90  $\mu\text{g}/\text{mL}$ , was constructed with triplicate injections at each concentration. A plot of the mean peak height obtained for each concentration against the respective paclitaxel concentration was subjected to linear least-square regression analysis and was found to be linear over the range tested with a regression coefficient of 0.9997.

**Precision of the method. Intra-day precision:** Eight paclitaxel standard solutions (60  $\mu\text{g}/\text{mL}$ ) were prepared and each injected onto the LC system in duplicate. From the mean of each duplicate, the CV was calculated ( $n=8$ ) as 1.9%.

**Inter-day precision:** Paclitaxel solution (60  $\mu\text{g}/\text{mL}$ ) was prepared on each successive day for 7 days, and injected onto the LC system in duplicate. From the mean of each duplicate, the CV was calculated ( $n=7$ ) as 1.6%.

**Stability indicating study.** A stability indicating study was performed using forced degradation, in order to determine whether paclitaxel could be distinguished in terms of retention time from any degradation products. Table 1 reveals the effect of forcibly degrading paclitaxel by alkaline, acidic and oxidative conditions and by heating at 55°C. Paclitaxel (60  $\mu\text{g}/\text{mL}$ ) stored in the refrigerator was used as a control sample for comparison purposes. The assay of paclitaxel in the control sample was 61.65  $\mu\text{g}/\text{mL}$ . On exposure to each of the following treatments – oxidative degradation, elevated temperature of 55°C and acid hydrolysis – paclitaxel assay was 57.89, 61.09 and 30.53  $\mu\text{g}/\text{mL}$ , respectively. In all cases, there was a distinct separation between

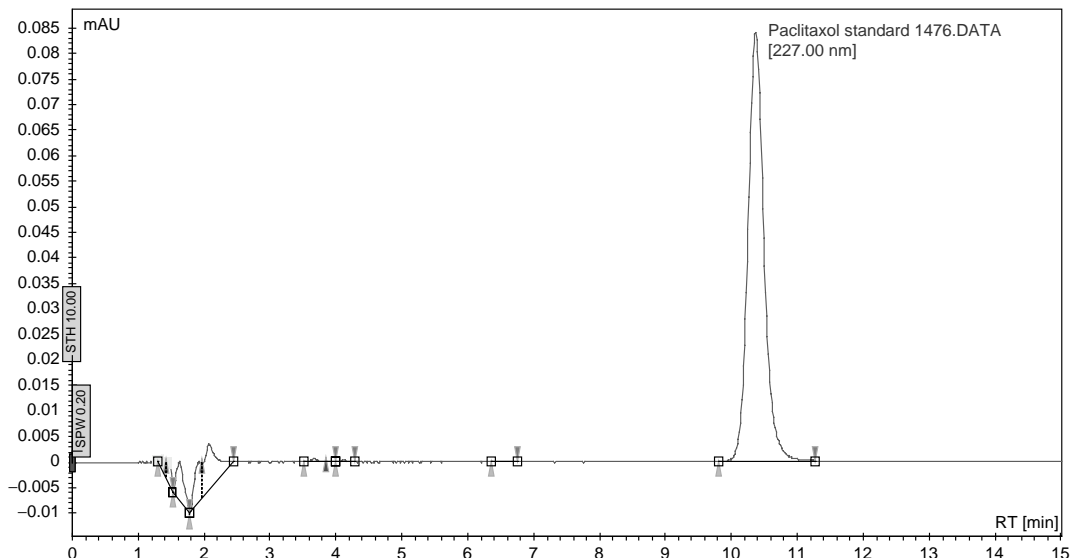


Figure 1. Typical LC chromatogram of paclitaxel (60 µg/mL) solution.

the drug and degradation product peak. Peak purity of the paclitaxel analyte peak was confirmed ( $> 0.97$ ) by diode-array spectroscopy. A cloudy gel was observed in paclitaxel solution subjected to alkaline hydrolysis. The dispersion was filtered using a 0.2-µm filter, and the filtrate analysed for paclitaxel by LC. Results indicated absence of drug peak implying complete loss of the drug.

#### Assay validation: summary

The LC assay developed for paclitaxel was stability – indicating for non-specific degradation of the parent drug, gave a linear analytical response and acceptable precision.

Accuracy of the method was determined ‘in-use’ by routine QC samples (blinded to operator) and was within the range 98.6–101.2% ( $n = 27$ ).

The assay was accepted as fit for purpose.

Table 1. Effect of oxidative degradation, alkaline hydrolysis, acid hydrolysis and elevated temperature (55°C) on paclitaxel stability

Treatment	Retention time (min)	Quantity (µg/mL)
Control	11.37	61.65
Oxidative degradation	11.36	57.89
Alkaline hydrolysis	–	–
Heat (55°C)	11.35	61.09
Acid hydrolysis	11.36	30.53

#### Acceptance criteria: chemical stability

The assay of drug concentration was accepted where the concentration of paclitaxel remaining at each time point was  $\geq 95.0\%$  of the initial concentration measured by HPLC.

## Results

The physical and chemical stability of paclitaxel was determined at intervals over a period of up to 30 days. The stability data for paclitaxel 0.3 mg/mL infusions at 2–8 and 25°C are presented in Tables 2 and 3, respectively, and for the 1.2 mg/mL infusions at 2–8 and 25°C in Tables 4 and 5, respectively.

Paclitaxel 0.3 mg/mL in 0.9% sodium chloride remained stable for 13, 16 and 13 days at 2–8°C in polyolefin, low-density polyethylene and glass containers, respectively; in 5% glucose for 13, 18, and 20 days, respectively. At 25°C, paclitaxel 0.3 mg/mL remained stable for 3 days in all diluent/container combinations with the exception of 5% glucose in glass, where stability lasted 7 days. Paclitaxel 1.2 mg/mL in 0.9% sodium chloride remained stable for 9, 12, and 8 days at 2–8°C in polyolefin, low-density polyethylene and glass containers, respectively; in 5% glucose for 10, 12, and 10 days, respectively. At 25°C, paclitaxel 1.2 mg/mL remained stable for 3 days in all diluent/container combinations with the exception of glass, where stability of 5 days was obtained in

**Table 2. Physical and chemical stability of paclitaxel 0.3 mg/mL in 0.9% sodium chloride or 5% glucose in polyolefin, low-density polyethylene and glass containers at 2–8°C**

Time (days)	pH	Moisture loss (%)	Subvisual particles/mL		Visual appearance	% Concentration $\pm$ SD paclitaxel remaining
			10 $\mu$ M	25 $\mu$ M		
<b>0.3 mg/mL Paclitaxel in 0.9% sodium chloride in polyolefin bags</b>						
0	3.77	–	25	0	Pass	0.296 mg/mL = 100%
3	3.95	0	57	0.22	Pass	99.54 $\pm$ 1.7
7	3.75	0	80	0.17	Pass	98.09 $\pm$ 1.0
10	3.75	0.14	148	0.77	Pass	98.09 $\pm$ 0.9
13	3.66	0.29	628	11.11	Pass	97.64 $\pm$ 0.3
15	3.97	0	3417	94.3	Fail	–
<b>0.3 mg/mL Paclitaxel in 5% glucose in polyolefin bags</b>						
0	3.94	–	18	0.33	Pass	0.292 mg/mL = 100%
3	4.09	0.12	68	0.61	Pass	97.32 $\pm$ 0.2
7	3.86	0	106	0.66	Pass	98.53 $\pm$ 1.2
10	3.92	0	121	0	Pass	98.44 $\pm$ 1.4
13	3.69	0	181	1.33	Pass	97.99 $\pm$ 1.8
15	4.06	0	367	5	Fail	–
<b>0.3 mg/mL Paclitaxel in 0.9% sodium chloride in low-density polyethylene containers</b>						
0	3.66	–	44.22	0	Pass	0.292 mg/mL = 100%
3	3.56	0.06	73.33	0.33	Pass	100.66 $\pm$ 0.97
7	3.56	0.06	33.33	0.22	Pass	99.74 $\pm$ 1.25
10	3.69	0.13	25.22	0.22	Pass	99.27 $\pm$ 0.91
12	3.58	0.06	31.66	0.33	Pass	97.22 $\pm$ 0.42
14	3.55	0	26.66	0.11	Pass	99.29 $\pm$ 0.84
16	3.59	0	24.77	0.11	Pass	100.69 $\pm$ 1.35
18	3.56	0	51.44	0.11	Fail	101.15 $\pm$ 0.12
<b>0.3 mg/mL Paclitaxel in 5% glucose in low-density polyethylene containers</b>						
0	3.89	–	43.11	0.22	Pass	0.310 mg/mL = 100%
3	3.58	0	55.89	0	Pass	100.36 $\pm$ 0.97
7	3.69	0	24.66	0	Pass	99.75 $\pm$ 0.51
10	3.78	0.13	47.88	0.33	Pass	99.70 $\pm$ 1.84
12	3.87	0	27.77	0.33	Pass	98.19 $\pm$ 0.44
14	3.81	0	24.66	0.33	Pass	100.43 $\pm$ 0.88
16	3.84	0	42.88	0.22	Pass	100.41 $\pm$ 0.98
18	3.81	0	40.88	0	Pass	10.31 $\pm$ 0.35
20	3.80	0	–	–	Fail	–
<b>0.3 mg/mL Paclitaxel in 0.9% sodium chloride in glass containers</b>						
0	3.71	–	90	0.33	Pass	0.289 mg/mL = 100%
3	3.95	0	97	0.5	Pass	98.09 $\pm$ 0.4

# Explore Litigation Insights

Docket Alarm provides insights to develop a more informed litigation strategy and the peace of mind of knowing you're on top of things.

## Real-Time Litigation Alerts



Keep your litigation team up-to-date with **real-time alerts** and advanced team management tools built for the enterprise, all while greatly reducing PACER spend.

Our comprehensive service means we can handle Federal, State, and Administrative courts across the country.

## Advanced Docket Research



With over 230 million records, Docket Alarm's cloud-native docket research platform finds what other services can't. Coverage includes Federal, State, plus PTAB, TTAB, ITC and NLRB decisions, all in one place.

Identify arguments that have been successful in the past with full text, pinpoint searching. Link to case law cited within any court document via Fastcase.

## Analytics At Your Fingertips



Learn what happened the last time a particular judge, opposing counsel or company faced cases similar to yours.

Advanced out-of-the-box PTAB and TTAB analytics are always at your fingertips.

## API

Docket Alarm offers a powerful API (application programming interface) to developers that want to integrate case filings into their apps.

## LAW FIRMS

Build custom dashboards for your attorneys and clients with live data direct from the court.

Automate many repetitive legal tasks like conflict checks, document management, and marketing.

## FINANCIAL INSTITUTIONS

Litigation and bankruptcy checks for companies and debtors.

## E-DISCOVERY AND LEGAL VENDORS

Sync your system to PACER to automate legal marketing.