

United States Patent [19]

Yoshida et al.

[11] Patent Number: 5,031,179

[45] Date of Patent: Jul. 9, 1991

[54] DATA COMMUNICATION APPARATUS

[75] Inventors: Takehiro Yoshida; Susumu Matsuzaki, both of Tokyo, Japan

[73] Assignee: Canon Kabushiki Kaisha, Tokyo, Japan

[21] Appl. No.: 267,541

[22] Filed: Nov. 4, 1988

[30] Foreign Application Priority Data

| | | |
|--------------------|-------|-----------|
| Nov. 10, 1987 [JP] | Japan | 62-282029 |
| Nov. 10, 1987 [JP] | Japan | 62-282032 |
| Nov. 13, 1987 [JP] | Japan | 62-285597 |
| Nov. 24, 1987 [JP] | Japan | 62-296445 |
| Nov. 28, 1987 [JP] | Japan | 62-301016 |
| Nov. 28, 1987 [JP] | Japan | 62-301017 |
| Nov. 28, 1987 [JP] | Japan | 62-301018 |

[51] Int. Cl.⁵ G06F 11/00

[52] U.S. Cl. 371/32; 371/5.5; 371/29.1

[58] Field of Search 371/32, 5.1, 5.3, 5.5, 371/29.1

[56] References Cited

U.S. PATENT DOCUMENTS

| | | | |
|-----------|---------|-----------------|---------|
| 3,534,264 | 10/1970 | Blasbalg et al. | 371/5.5 |
| 4,110,558 | 8/1978 | Kageyama et al. | 371/5.5 |
| 4,332,029 | 5/1982 | Campbell et al. | 371/5.5 |

| | | | |
|-----------|---------|------------------|----------|
| 4,390,947 | 6/1983 | DeShon | 371/32 |
| 4,514,847 | 4/1985 | Tateishi et al. | 371/40.2 |
| 4,589,111 | 5/1986 | Adachi | 371/32 |
| 4,628,511 | 12/1986 | Stitzlein et al. | 371/29.1 |
| 4,713,810 | 12/1987 | Chum | 371/5.1 |
| 4,729,033 | 3/1988 | Yoshida | 358/435 |
| 4,736,388 | 4/1988 | Eguchi | 371/5.5 |
| 4,815,121 | 3/1989 | Yoshida | 379/67 |
| 4,829,524 | 5/1989 | Yoshida | 371/32 |

Primary Examiner—Charles E. Atkinson
Attorney, Agent, or Firm—Fitzpatrick, Cella, Harper & Scinto

[57] ABSTRACT

A data communication apparatus having an error retransmission mode allows the operator to ascertain an amount of error data when an error is contained in data and when the error is not corrected despite retransmission of the error a predetermined number of times, or makes it possible to reproduce data with respect to correctly received data by discriminating correct data contained in error data, thereby preventing error data from becoming wasted as practically as possible. In addition, at the time of error retransmission, a transmission mode for retransmitting the error data is changed so as to minimize the number of incidents of error retransmission, thereby to enable efficient data transmission.

26 Claims, 50 Drawing Sheets

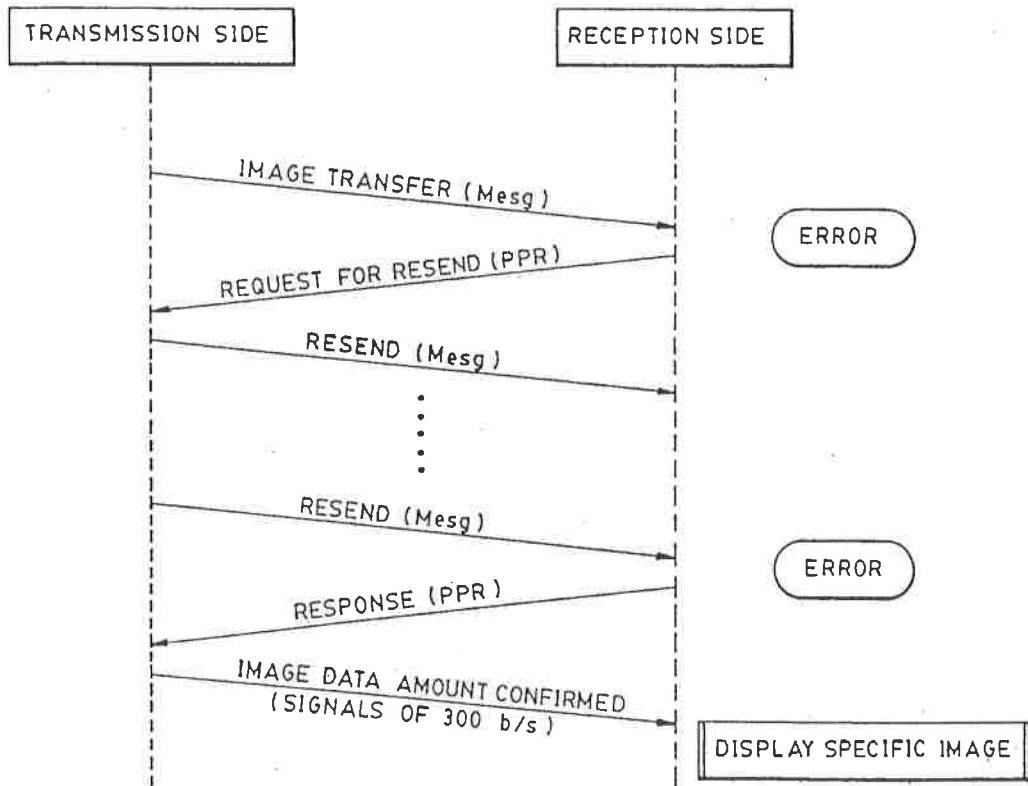


FIG. 1(1)

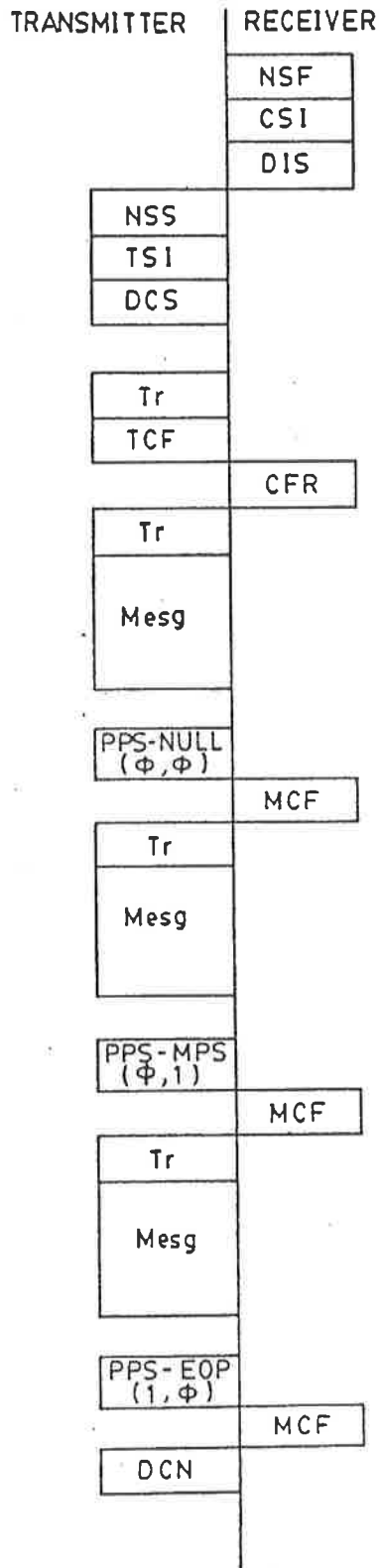


FIG. 1(2)

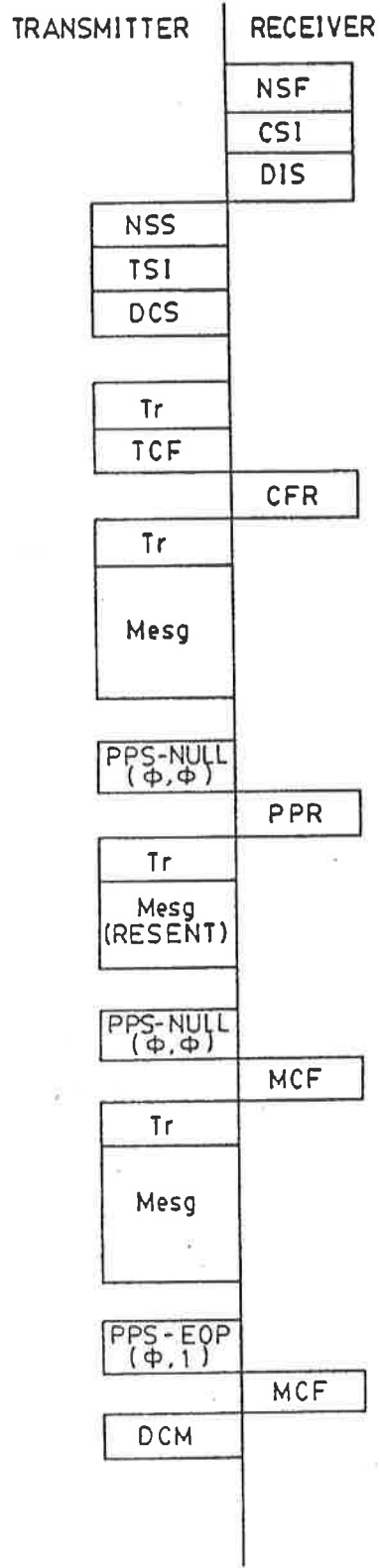


FIG. 1 (3) (PART 1)

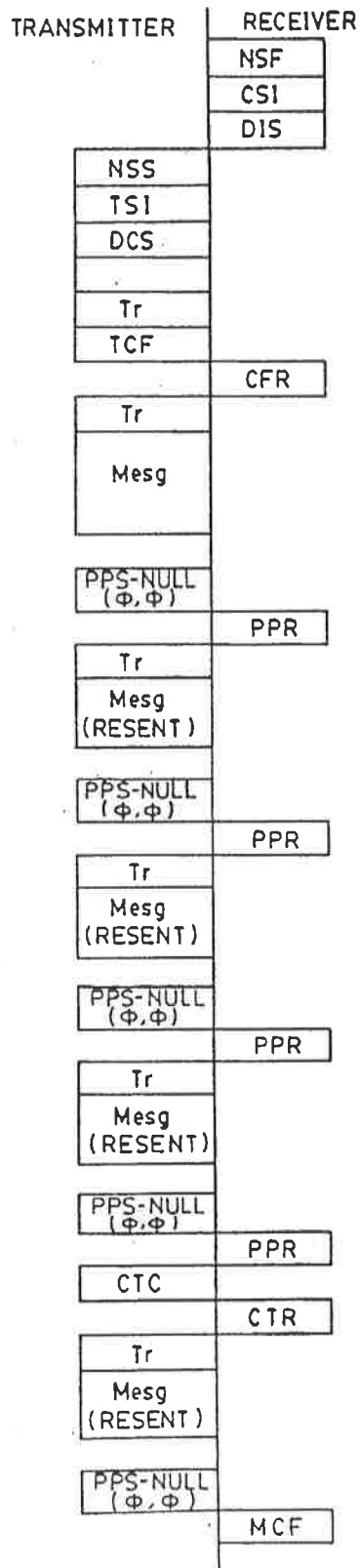
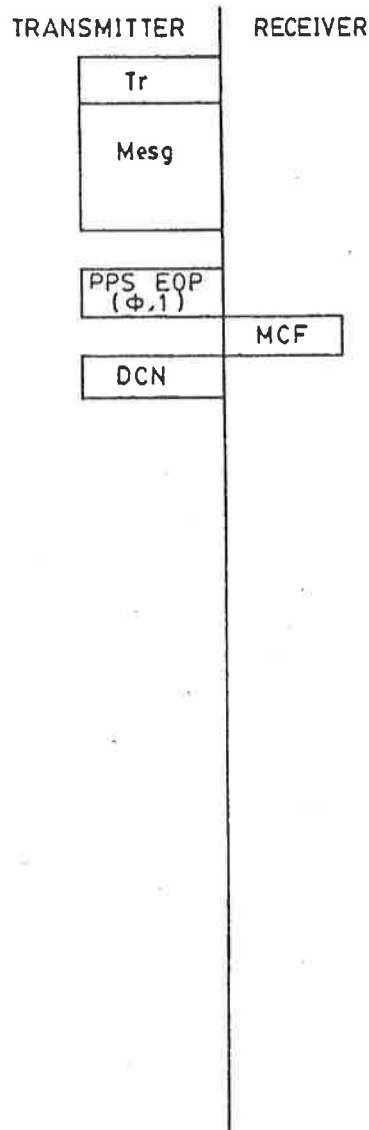


FIG. 1 (3) (PART 2)



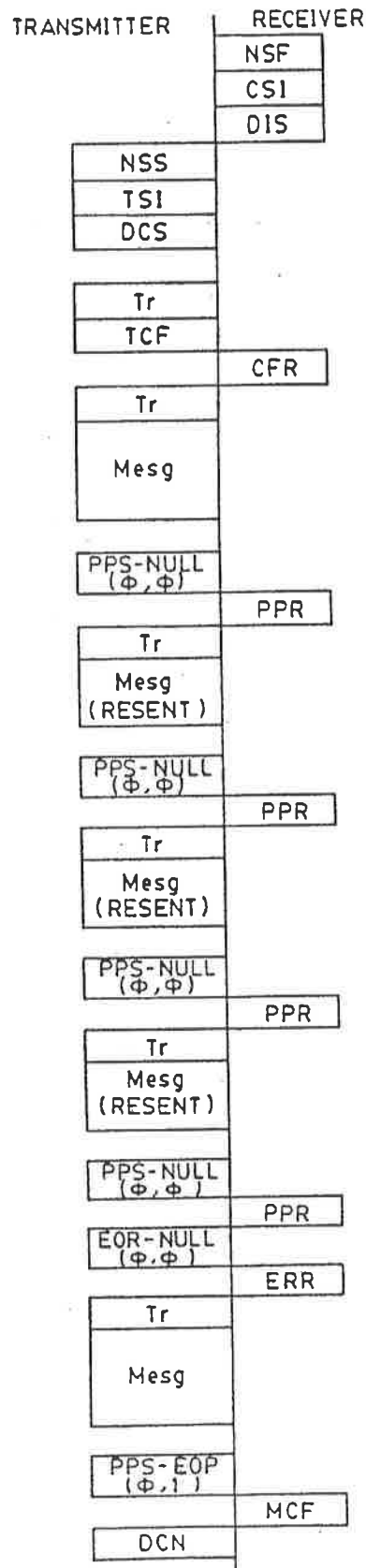
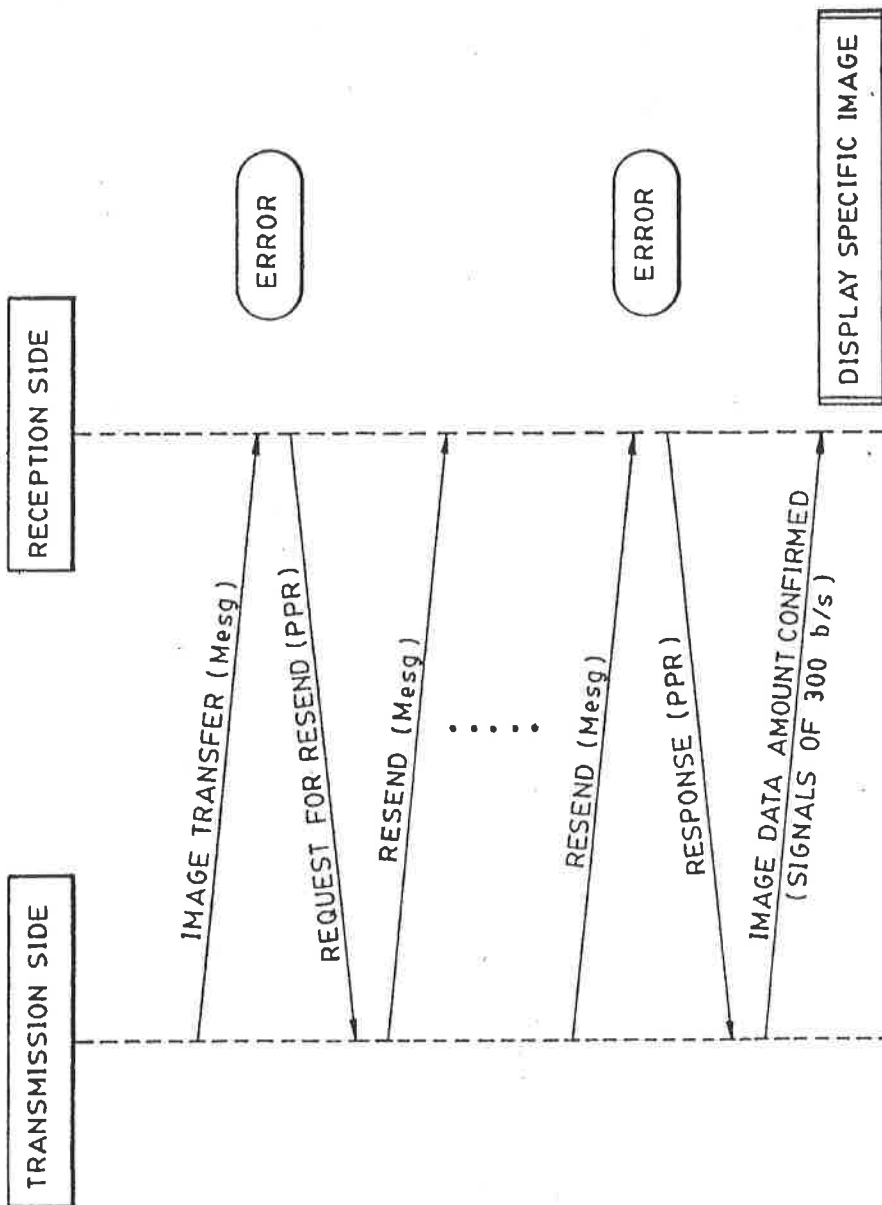


FIG. 1 (4)

FIG. 2



Explore Litigation Insights

Docket Alarm provides insights to develop a more informed litigation strategy and the peace of mind of knowing you're on top of things.

Real-Time Litigation Alerts



Keep your litigation team up-to-date with **real-time alerts** and advanced team management tools built for the enterprise, all while greatly reducing PACER spend.

Our comprehensive service means we can handle Federal, State, and Administrative courts across the country.

Advanced Docket Research



With over 230 million records, Docket Alarm's cloud-native docket research platform finds what other services can't. Coverage includes Federal, State, plus PTAB, TTAB, ITC and NLRB decisions, all in one place.

Identify arguments that have been successful in the past with full text, pinpoint searching. Link to case law cited within any court document via Fastcase.

Analytics At Your Fingertips



Learn what happened the last time a particular judge, opposing counsel or company faced cases similar to yours.

Advanced out-of-the-box PTAB and TTAB analytics are always at your fingertips.

API

Docket Alarm offers a powerful API (application programming interface) to developers that want to integrate case filings into their apps.

LAW FIRMS

Build custom dashboards for your attorneys and clients with live data direct from the court.

Automate many repetitive legal tasks like conflict checks, document management, and marketing.

FINANCIAL INSTITUTIONS

Litigation and bankruptcy checks for companies and debtors.

E-DISCOVERY AND LEGAL VENDORS

Sync your system to PACER to automate legal marketing.