

(12) **United States Patent**
Palinkas et al.

(10) **Patent No.:** **US 6,716,062 B1**
(45) **Date of Patent:** **Apr. 6, 2004**

- (54) **COAXIAL CABLE F CONNECTOR WITH IMPROVED RFI SEALING**
- (75) Inventors: **Raymond Palinkas**, Canastota, NY (US); **Michael T. Fox**, Syracuse, NY (US); **Noah Montena**, Syracuse, NY (US)
- (73) Assignee: **John Mezzalingua Associates, Inc.**, East Syracuse, NY (US)
- (*) Notice: Subject to any disclaimer, the term of this patent is extended or adjusted under 35 U.S.C. 154(b) by 0 days.

5,490,801 A	2/1996	Fisher, Jr. et al.
5,501,616 A	3/1996	Holliday
5,516,303 A	5/1996	Yohn et al.
5,571,028 A	11/1996	Szegda
5,632,637 A	5/1997	Diener
5,722,856 A	3/1998	Fuchs et al.
5,746,617 A	5/1998	Porter, Jr. et al.
5,746,619 A	5/1998	Harting et al.
5,769,652 A	6/1998	Wider
5,879,191 A	3/1999	Burris
5,921,793 A	7/1999	Phillips
5,944,548 A	8/1999	Saito
6,053,777 A	* 4/2000	Boyle 439/700

* cited by examiner

- (21) Appl. No.: **10/277,756**
- (22) Filed: **Oct. 21, 2002**
- (51) Int. Cl.⁷ **H01R 9/05**
- (52) U.S. Cl. **439/578; 439/320; 439/700**
- (58) Field of Search 439/578, 320, 439/583-585, 322, 323, 700, 824, 607, 610

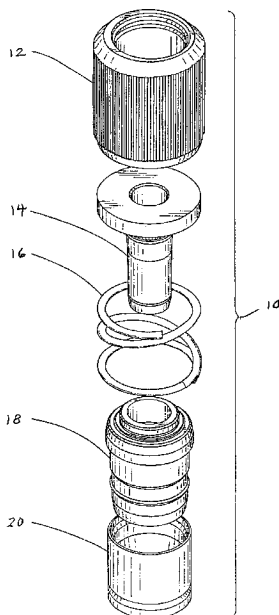
Primary Examiner—Renee Luebke
Assistant Examiner—Felix O. Figueroa
(74) *Attorney, Agent, or Firm*—Christopher R. Pastel; Hancock & Estabrook, LLP

(57) **ABSTRACT**

An F-type connector for mounting to a prepared terminal end of a coaxial cable for threaded engagement of a nut on the connector to a threaded shaft at a port on video equipment to which the coaxial cable is to be electrically connected. In the connector of the present invention, the nut is mounted for limited axial movement with respect to the post, body and compression ring. A coil spring biases the nut toward a rest position with respect to the other elements wherein not more than three revolutions of the nut into engagement with the shaft are necessary in order to bring the post of the connector into contact with the shaft on the equipment, providing a satisfactory coupling. Upon further revolution of the nut, the post and shaft remain in contact as the nut moves axially away from the rest position with respect to the other elements.

- (56) **References Cited**
U.S. PATENT DOCUMENTS
- 3,587,033 A 6/1971 Brorein
- 3,680,034 A 7/1972 Chow et al.
- 3,781,762 A * 12/1973 Quackenbush 439/322
- 3,970,355 A * 7/1976 Pitschi 439/578
- 4,174,875 A 11/1979 Wilson et al.
- 4,285,564 A 8/1981 Spinner
- 4,836,801 A 6/1989 Ramirez
- 4,915,651 A 4/1990 Bout
- 4,941,846 A * 7/1990 Guimond et al. 439/578
- 5,011,432 A 4/1991 Sucht et al.
- 5,217,393 A 6/1993 Del Negro et al.
- 5,439,386 A 8/1995 Ellis et al.

33 Claims, 8 Drawing Sheets



PPC Exhibit 2010
Corning v. PPC
IPR2016-01569

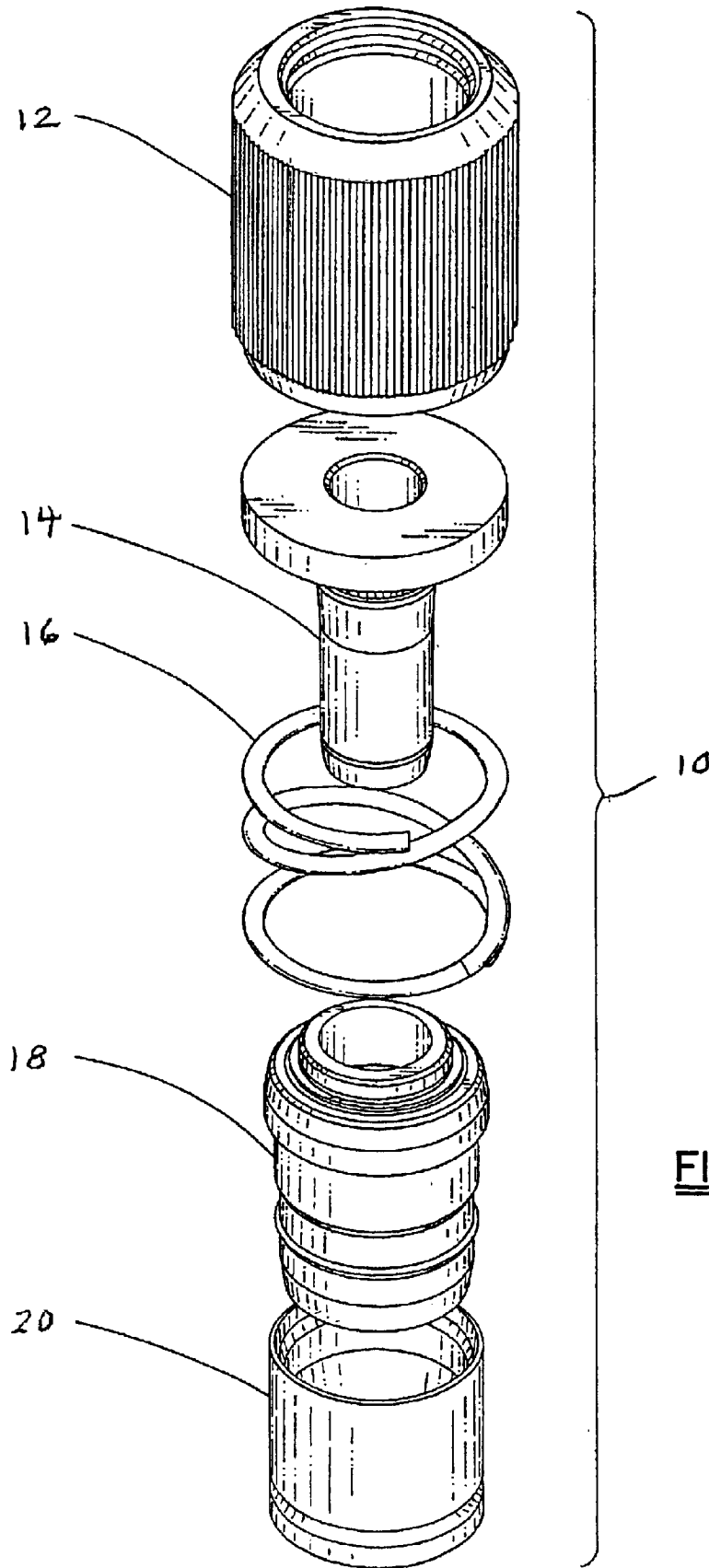


FIG. 1

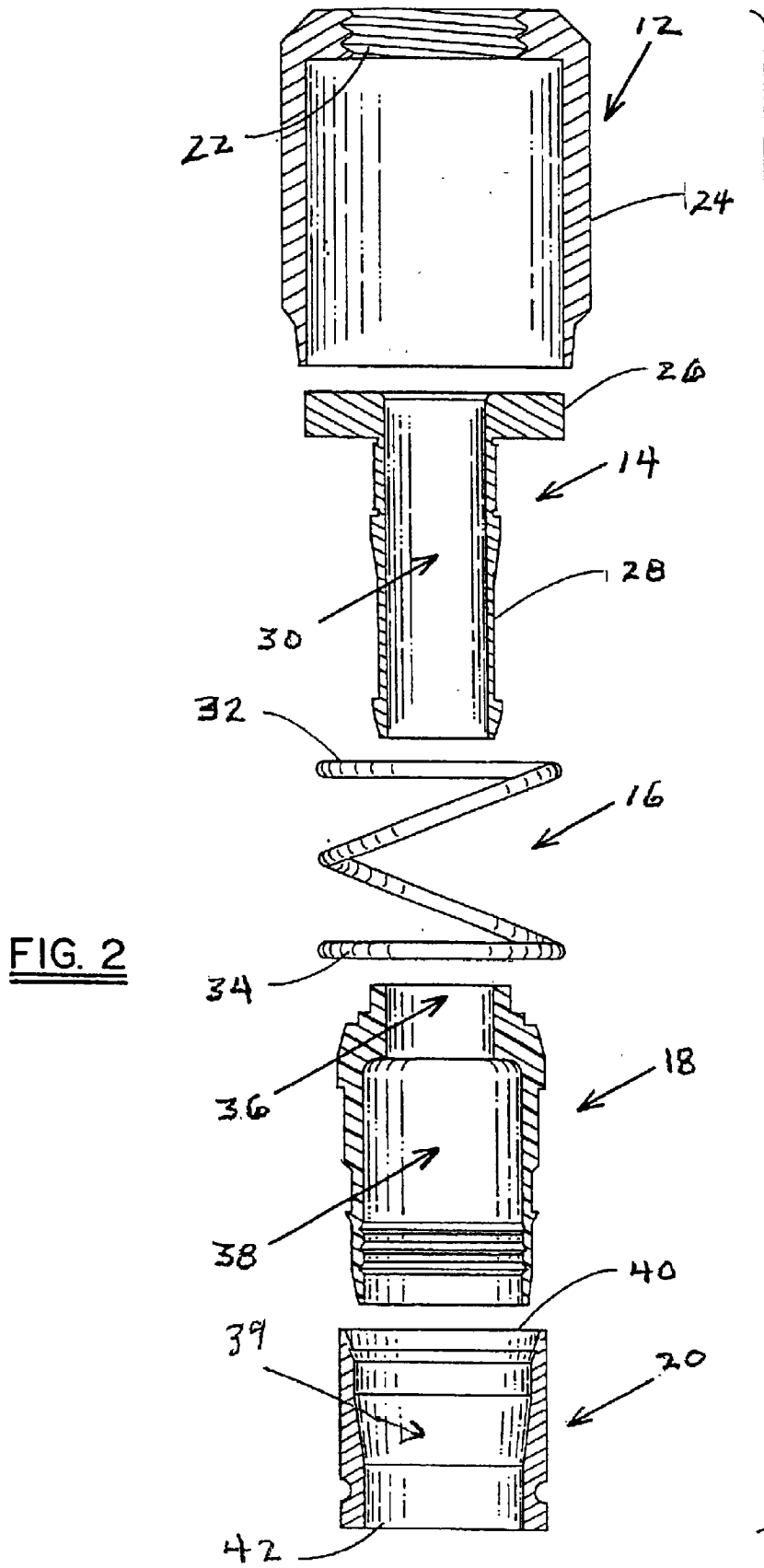


FIG. 2

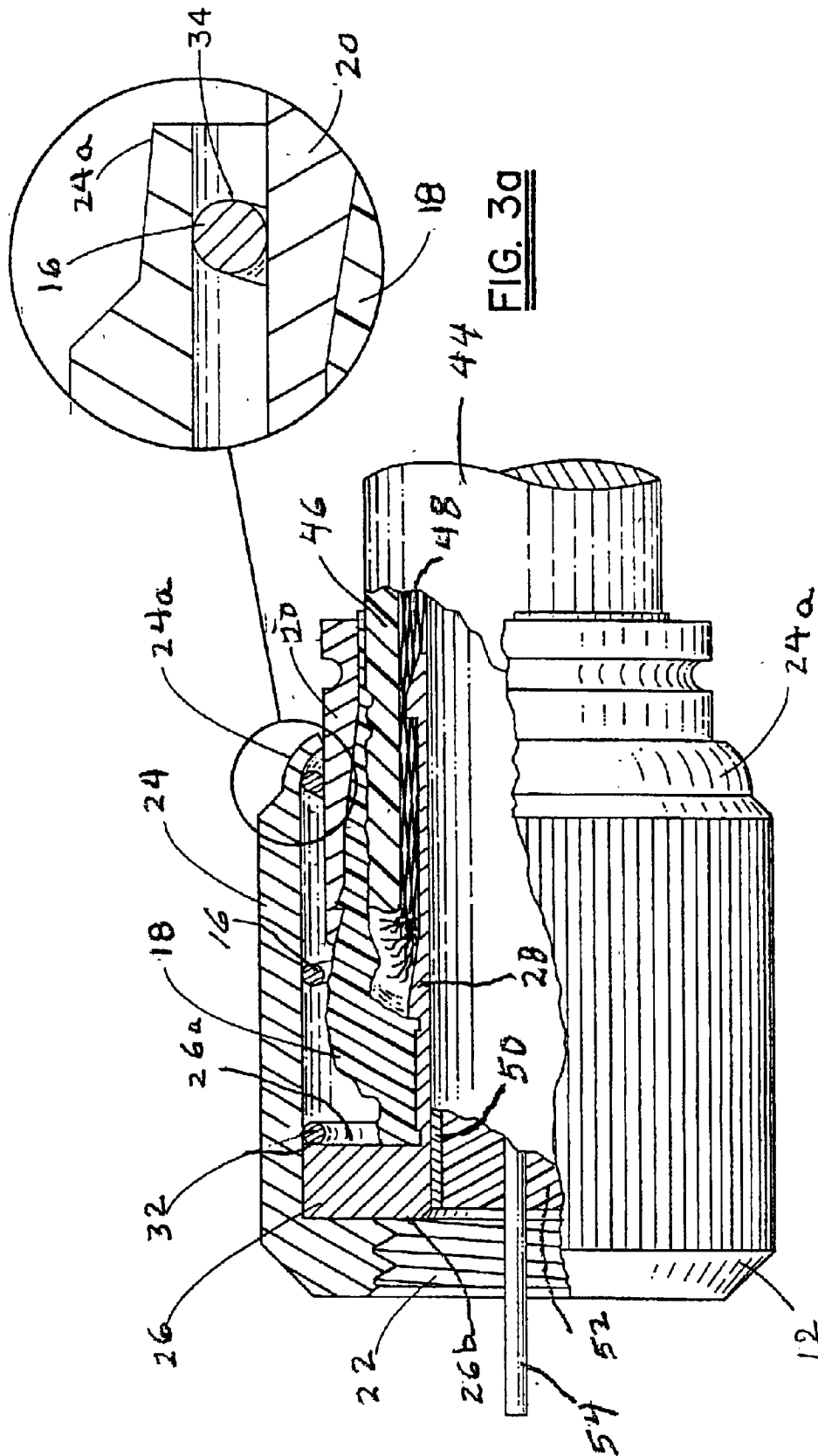


FIG. 3

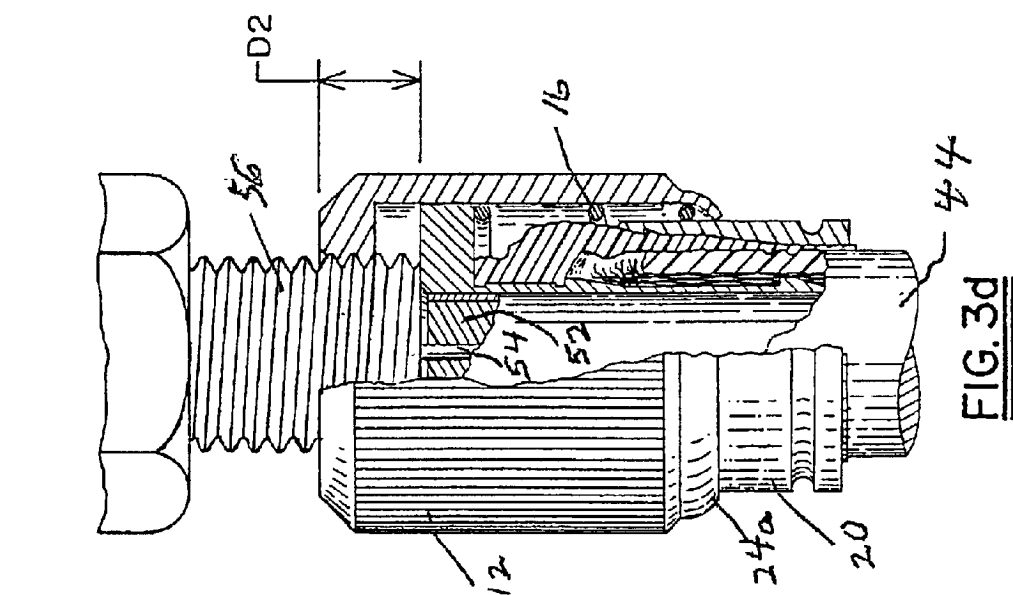


FIG. 3d

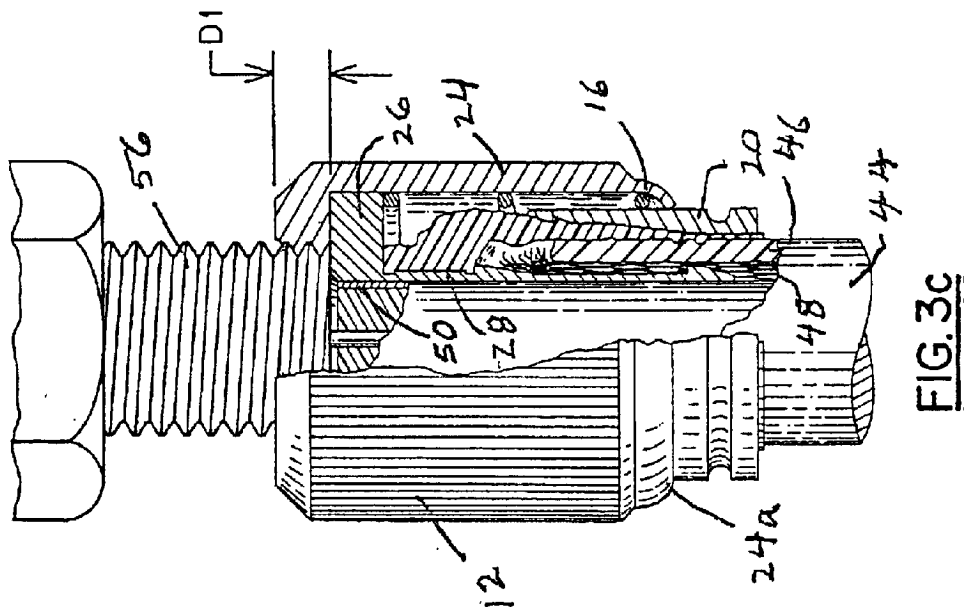


FIG. 3c

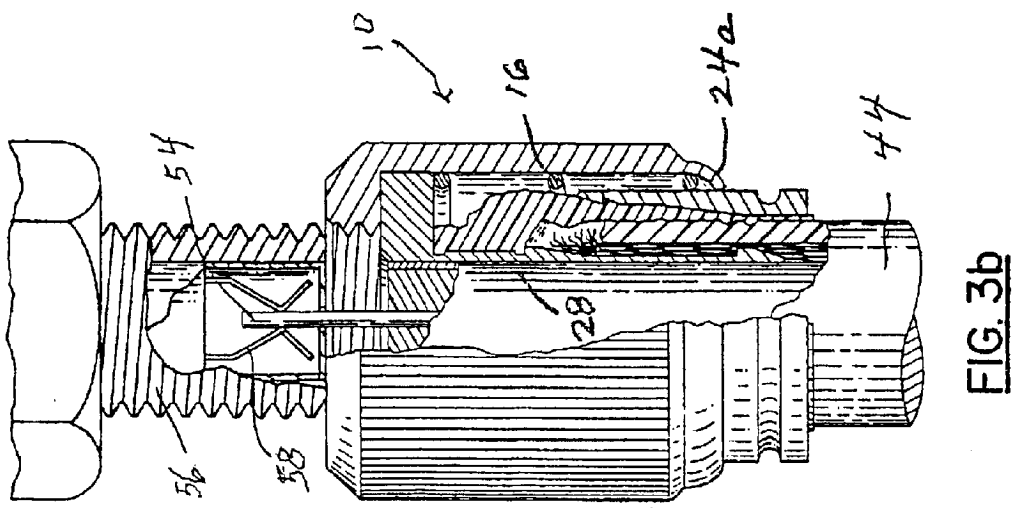


FIG. 3b

Explore Litigation Insights

Docket Alarm provides insights to develop a more informed litigation strategy and the peace of mind of knowing you're on top of things.

Real-Time Litigation Alerts



Keep your litigation team up-to-date with **real-time alerts** and advanced team management tools built for the enterprise, all while greatly reducing PACER spend.

Our comprehensive service means we can handle Federal, State, and Administrative courts across the country.

Advanced Docket Research



With over 230 million records, Docket Alarm's cloud-native docket research platform finds what other services can't. Coverage includes Federal, State, plus PTAB, TTAB, ITC and NLRB decisions, all in one place.

Identify arguments that have been successful in the past with full text, pinpoint searching. Link to case law cited within any court document via Fastcase.

Analytics At Your Fingertips



Learn what happened the last time a particular judge, opposing counsel or company faced cases similar to yours.

Advanced out-of-the-box PTAB and TTAB analytics are always at your fingertips.

API

Docket Alarm offers a powerful API (application programming interface) to developers that want to integrate case filings into their apps.

LAW FIRMS

Build custom dashboards for your attorneys and clients with live data direct from the court.

Automate many repetitive legal tasks like conflict checks, document management, and marketing.

FINANCIAL INSTITUTIONS

Litigation and bankruptcy checks for companies and debtors.

E-DISCOVERY AND LEGAL VENDORS

Sync your system to PACER to automate legal marketing.