

United States Patent [19]

Pailen et al.

[11] Patent Number: **4,652,990**

[45] Date of Patent: **Mar. 24, 1987**

- [54] **PROTECTED SOFTWARE ACCESS CONTROL APPARATUS AND METHOD**
- [75] Inventors: **William Pailen, Derwood; Jim L. Harper, Olney, both of Md.**
- [73] Assignee: **Remote Systems, Inc., Vienna, Va.**
- [21] Appl. No.: **546,206**
- [22] Filed: **Oct. 27, 1983**
- [51] Int. Cl.⁴ **H04Q 5/00; H04L 9/00**
- [52] U.S. Cl. **364/200; 380/4; 380/24**
- [58] Field of Search ... **364/200 MS File, 900 MS File; 340/825.3, 825.31, 825.34; 178/22**

- 4,386,234 5/1983 Ehram et al. 178/22.09
- 4,438,824 4/1984 Mueller-Schloer 178/22.08
- 4,471,163 9/1984 Donald et al. 364/200

Primary Examiner—David Y. Eng
Attorney, Agent, or Firm—Neuman, Williams, Anderson & Olson

[57] ABSTRACT

A software access control system is disclosed for controlling access to a protected application program. The software access control system comprises first and second processors, each having a terminal or port adapting its processor to be coupled with the other. The first processor is programmed to permit access to the protected application program and comprises a first memory storing the protected application program, a program identification manifestation and a customer identification manifestation. The second processor comprises a second memory for storing a program identification manifestation and a customer identification manifestation, as assigned to the second processor. A user terminal is actuated to transmit an access request message including a requested program identification manifestation to the first processor requesting permission to execute a particular application program. There is disclosed a two-step process of granting access to a protected application program. First, the requested program identification manifestation, as entered on the user terminal, is compared with a program identification manifestation retained within the second processor. If there is a first match, a customer authentication message is transmitted from the first processor to the second processor. In response, the second processor transmits its assigned customer identification manifestation to the first processor, wherein a comparison is made between the retained customer identification manifestation and the assigned customer identification transmission. If there is a second match, access to use and to execute the application program is granted.

References Cited

U.S. PATENT DOCUMENTS

3,611,293	10/1971	Constable et al.	340/149 A
3,761,883	9/1973	Alvarez	364/200
3,798,605	3/1974	Feistel	364/200
3,846,622	11/1974	Meyer	235/61.7 B
3,892,948	7/1975	Constable	340/149 R
3,956,615	5/1976	Anderson et al.	235/61.7 B
3,985,998	10/1976	Crafton	235/61.7 B
3,996,449	12/1976	Attanasio et al.	235/61.7 R
4,025,760	5/1977	Trenkamp	235/61.7 B
4,123,747	10/1978	Lancto et al.	340/149 A
4,193,131	3/1980	Lennon et al.	375/2
4,214,230	7/1980	Fak et al.	340/149 A
4,218,738	8/1980	Matyas et al.	364/200
4,223,403	9/1980	Konheim et al.	375/2
4,227,253	10/1980	Ehram et al.	364/200
4,238,853	12/1980	Ehram et al.	364/200
4,238,854	12/1980	Ehram et al.	375/2
4,259,720	3/1981	Campbell	364/200 X
4,264,782	4/1981	Konheim	178/22
4,268,715	5/1981	Atalla	178/22
4,281,215	7/1981	Atalla	178/22.08
4,283,599	8/1981	Atalla	178/22.1
4,288,659	9/1982	Atalla	178/22.08
4,310,720	1/1982	Check, Jr.	178/22.08
4,315,101	2/1982	Atalla	178/22.08
4,317,957	3/1982	Sendrow	178/22.08
4,326,098	4/1982	Bouricius et al.	178/22.08

12 Claims, 18 Drawing Figures

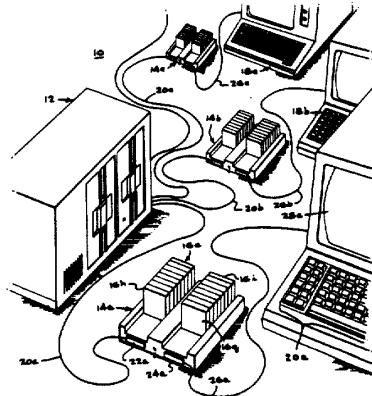


FIG-1A

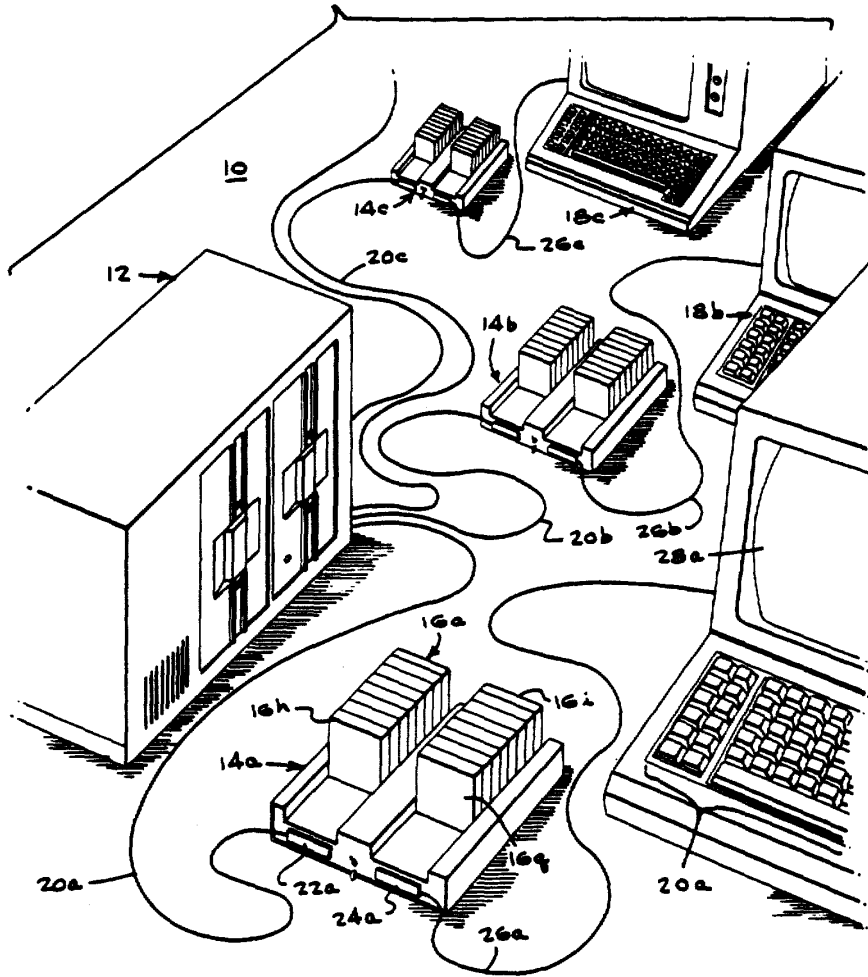


FIG. 1B

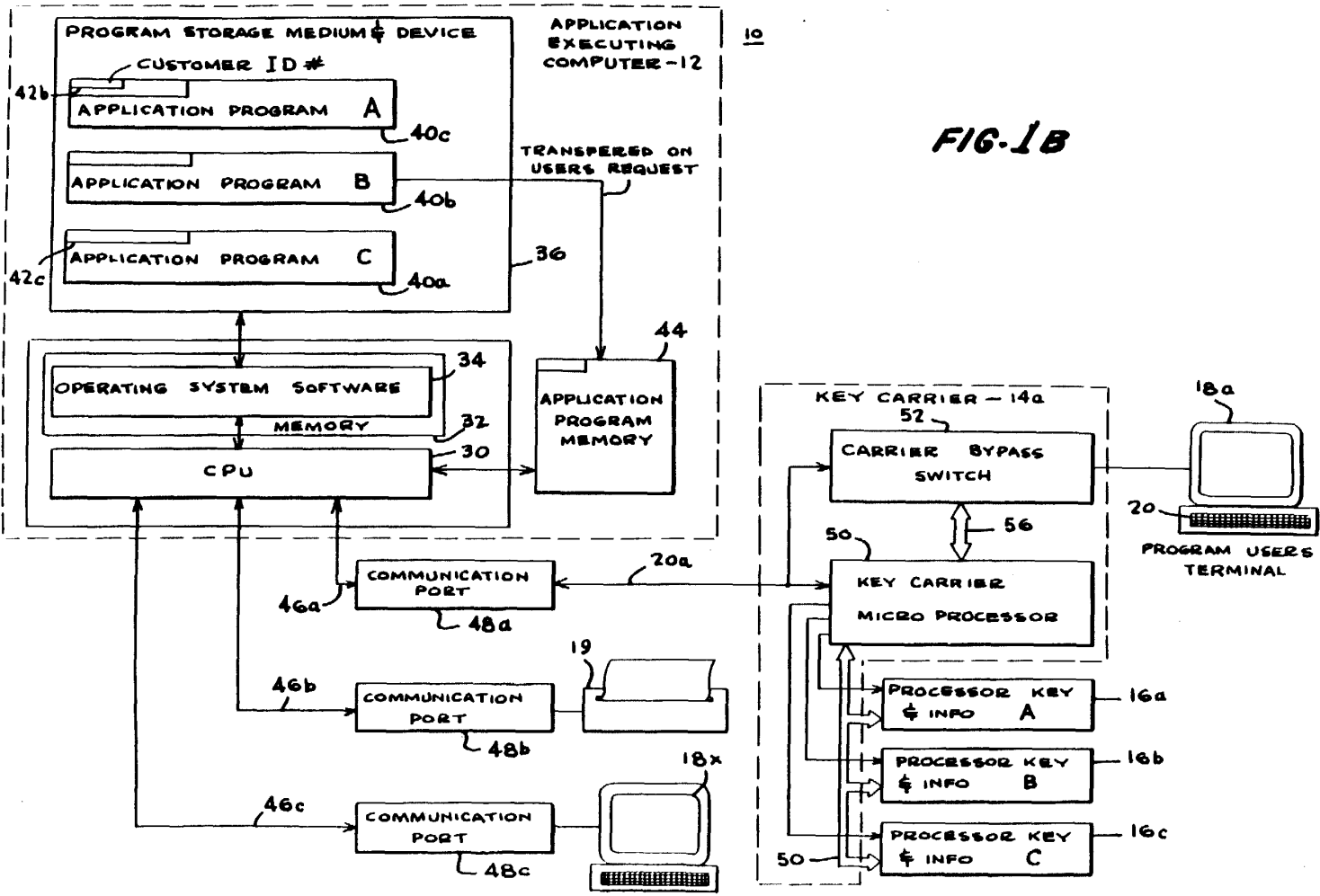


FIG-1C

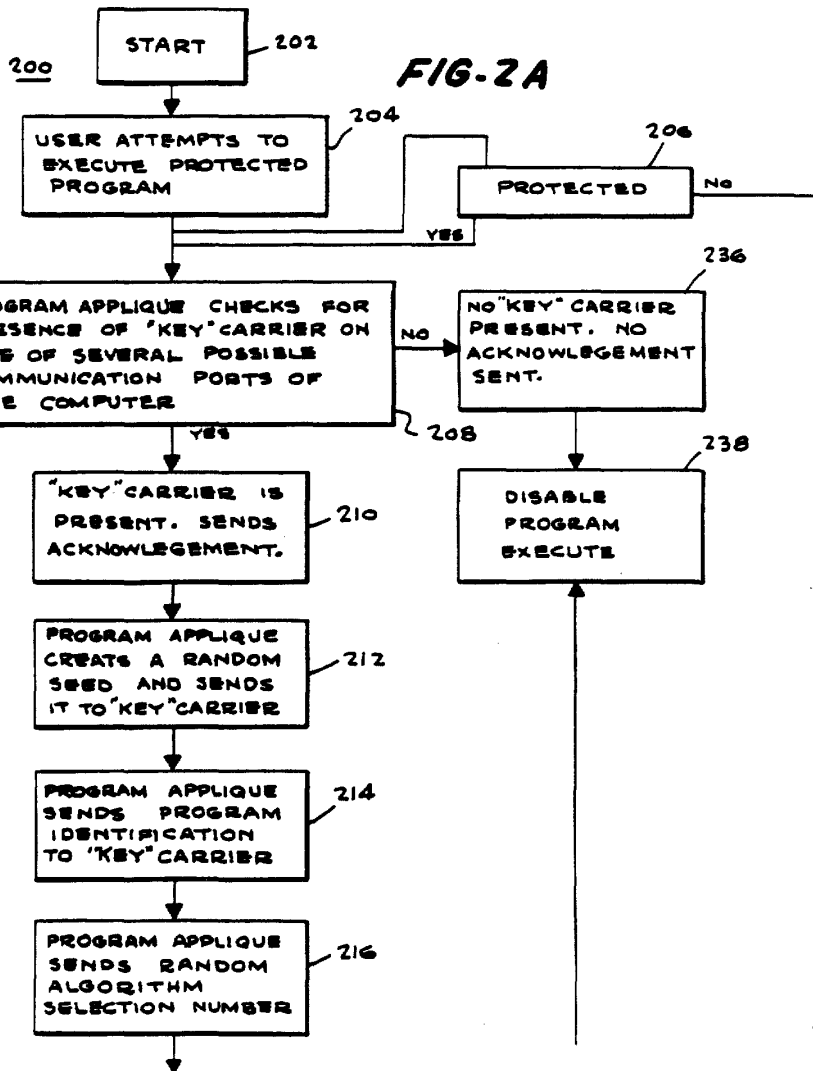
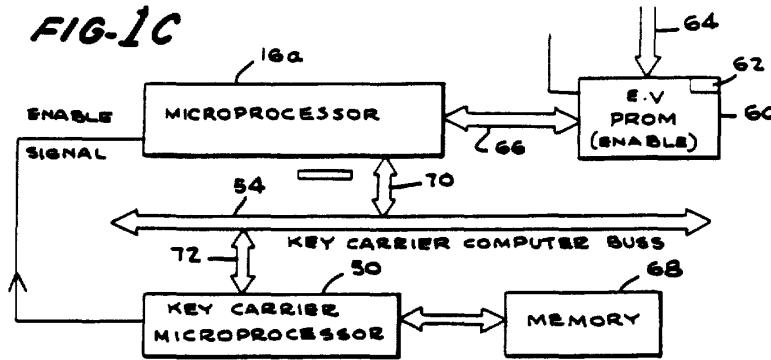
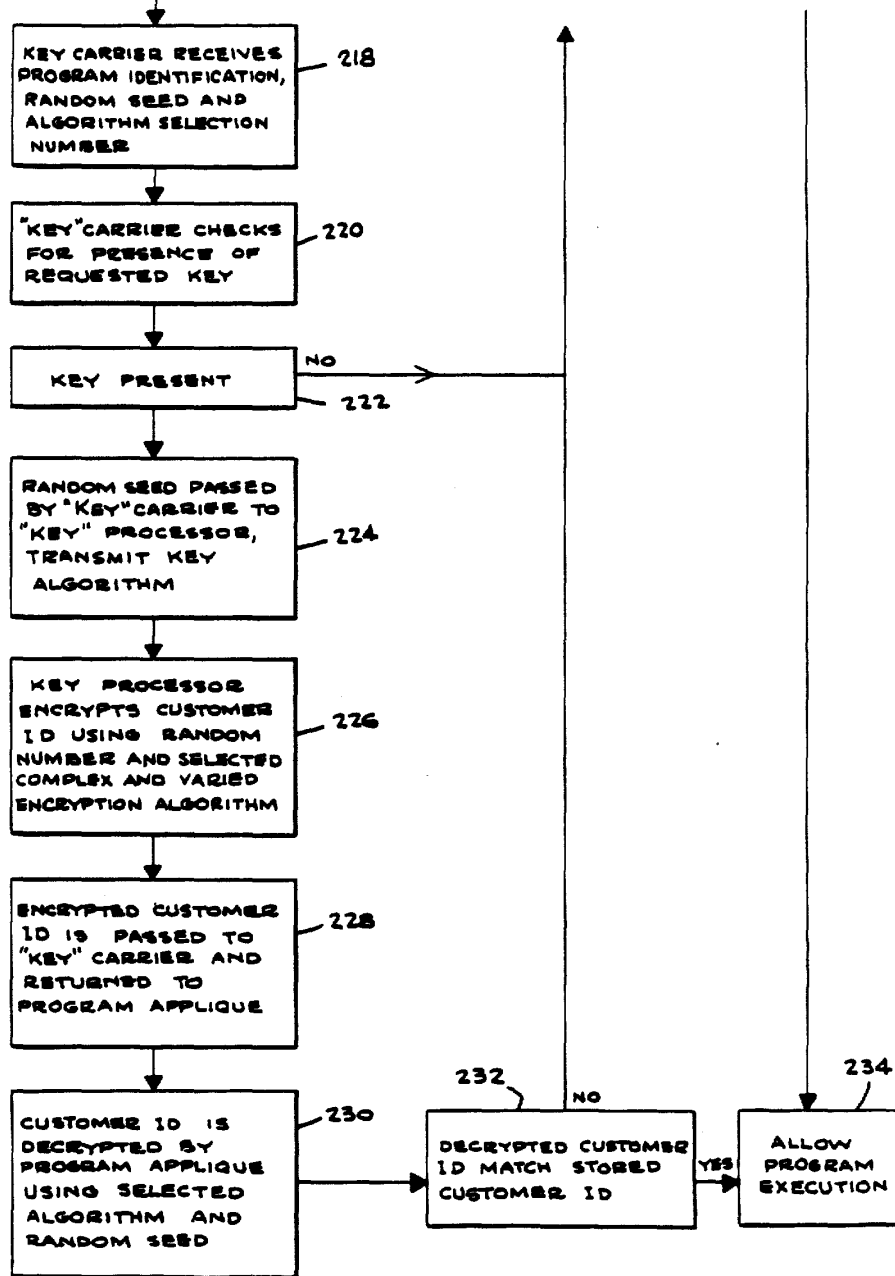


FIG-2B



Explore Litigation Insights

Docket Alarm provides insights to develop a more informed litigation strategy and the peace of mind of knowing you're on top of things.

Real-Time Litigation Alerts



Keep your litigation team up-to-date with **real-time alerts** and advanced team management tools built for the enterprise, all while greatly reducing PACER spend.

Our comprehensive service means we can handle Federal, State, and Administrative courts across the country.

Advanced Docket Research



With over 230 million records, Docket Alarm's cloud-native docket research platform finds what other services can't. Coverage includes Federal, State, plus PTAB, TTAB, ITC and NLRB decisions, all in one place.

Identify arguments that have been successful in the past with full text, pinpoint searching. Link to case law cited within any court document via Fastcase.

Analytics At Your Fingertips



Learn what happened the last time a particular judge, opposing counsel or company faced cases similar to yours.

Advanced out-of-the-box PTAB and TTAB analytics are always at your fingertips.

API

Docket Alarm offers a powerful API (application programming interface) to developers that want to integrate case filings into their apps.

LAW FIRMS

Build custom dashboards for your attorneys and clients with live data direct from the court.

Automate many repetitive legal tasks like conflict checks, document management, and marketing.

FINANCIAL INSTITUTIONS

Litigation and bankruptcy checks for companies and debtors.

E-DISCOVERY AND LEGAL VENDORS

Sync your system to PACER to automate legal marketing.