



US006105005A

United States Patent [19]

[11] **Patent Number:** **6,105,005**

Fuhrer

[45] **Date of Patent:** **Aug. 15, 2000**

[54] **SYSTEM FOR ENHANCED FINANCIAL TRADING SUPPORT**

5,544,347	8/1996	Yanai et al.	395/489
5,596,706	1/1997	Shimazaki et al.	395/182.04
5,627,886	5/1997	Bowman	379/111
5,802,499	9/1998	Sampson et al.	395/235
5,982,900	4/1999	Ginter et al.	395/186

[75] Inventor: **Evelyn Fuhrer**, Brooklyn, N.Y.

[73] Assignee: **Merrill Lynch & Co., Inc.**, New York, N.Y.

Primary Examiner—Tod R. Swann
Assistant Examiner—Pedro R. Kanof
Attorney, Agent, or Firm—Hopgood, Calimafde, Kalil & Judlowe

[21] Appl. No.: **08/993,382**

[22] Filed: **Dec. 18, 1997**

[57] ABSTRACT

Related U.S. Application Data

[63] Continuation of application No. 08/306,382, Sep. 15, 1997, abandoned.

[51] **Int. Cl.**⁷ **G06F 15/30**; G06F 17/60

[52] **U.S. Cl.** **705/35**; 705/37

[58] **Field of Search** 705/35, 37; 714/13; 713/200, 201; 360/825.26, 825.27; 379/111

A multi-purpose data processing system that is capable of going on-line to provide an operative link with established financial markets in support of subscriber trading. The system has two modes of operation. A first mode is directed to support for financial transactions or services that are necessary, but not critical. The second mode addresses a lost trading link from a primary trading system pursuant to a catastrophic event, and provides a remote trading platform to a plurality of pre-select traders. The second mode is accessible via disaster declaration, and the system permits custom terminal configuration in accordance with designated traders. Operation allows quick access to markets when the primary market link outlet is down.

[56] References Cited

U.S. PATENT DOCUMENTS

4,403,303	9/1983	Howes et al.	364/900
4,872,106	10/1989	Slater	364/200
5,297,032	3/1994	Trojan et al.	364/408
5,504,861	4/1996	Crockett et al.	395/182.11

16 Claims, 7 Drawing Sheets

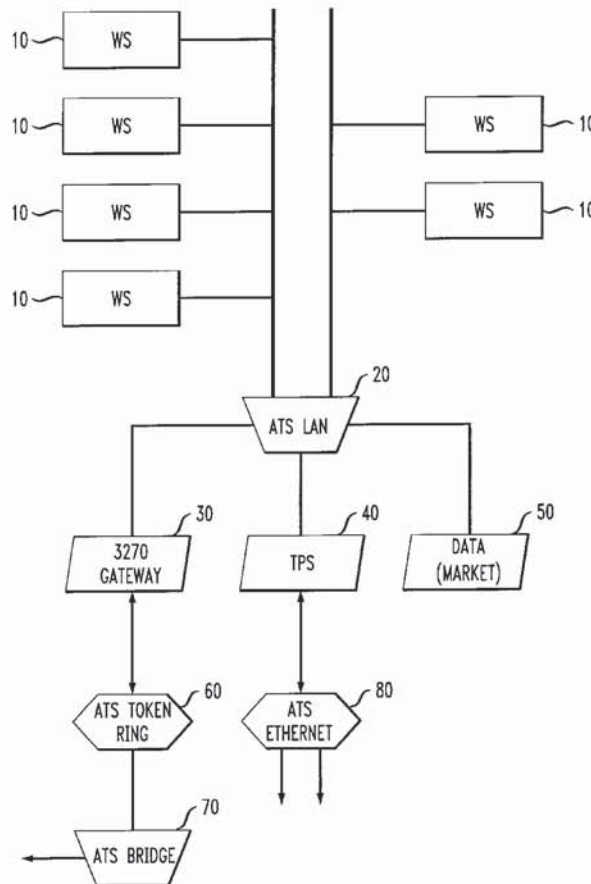


FIG. 1

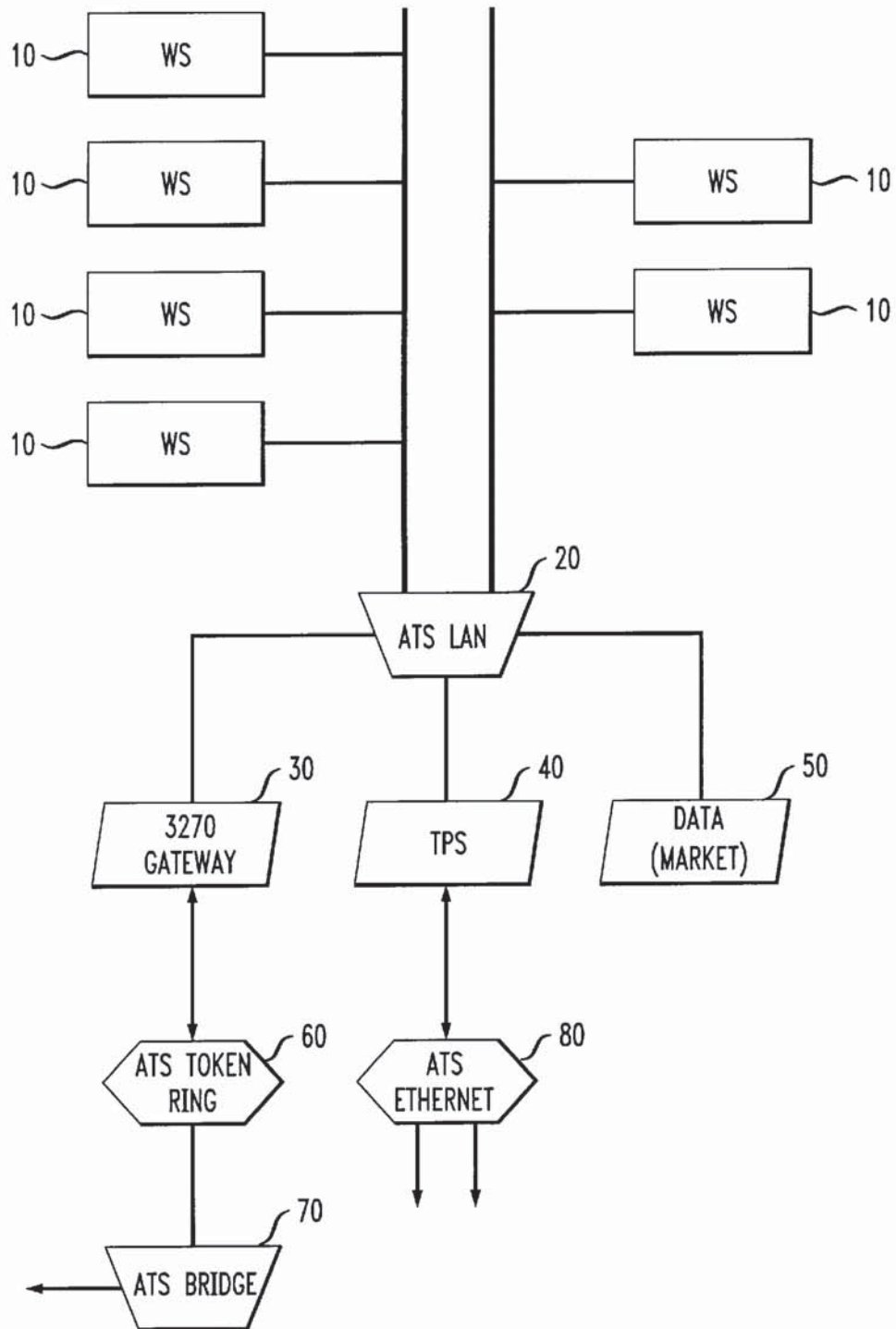


FIG. 2

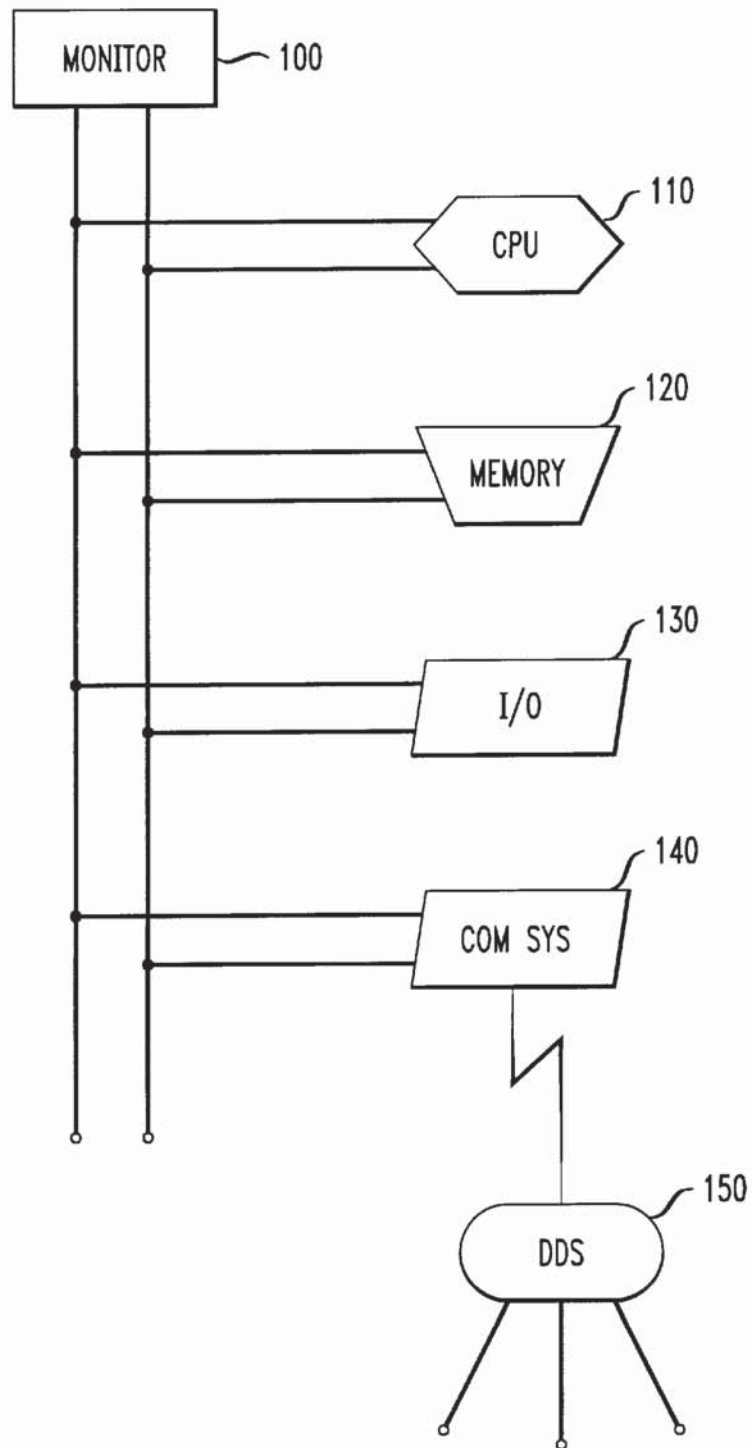


FIG. 3

ATS DISASTER DECLARATION

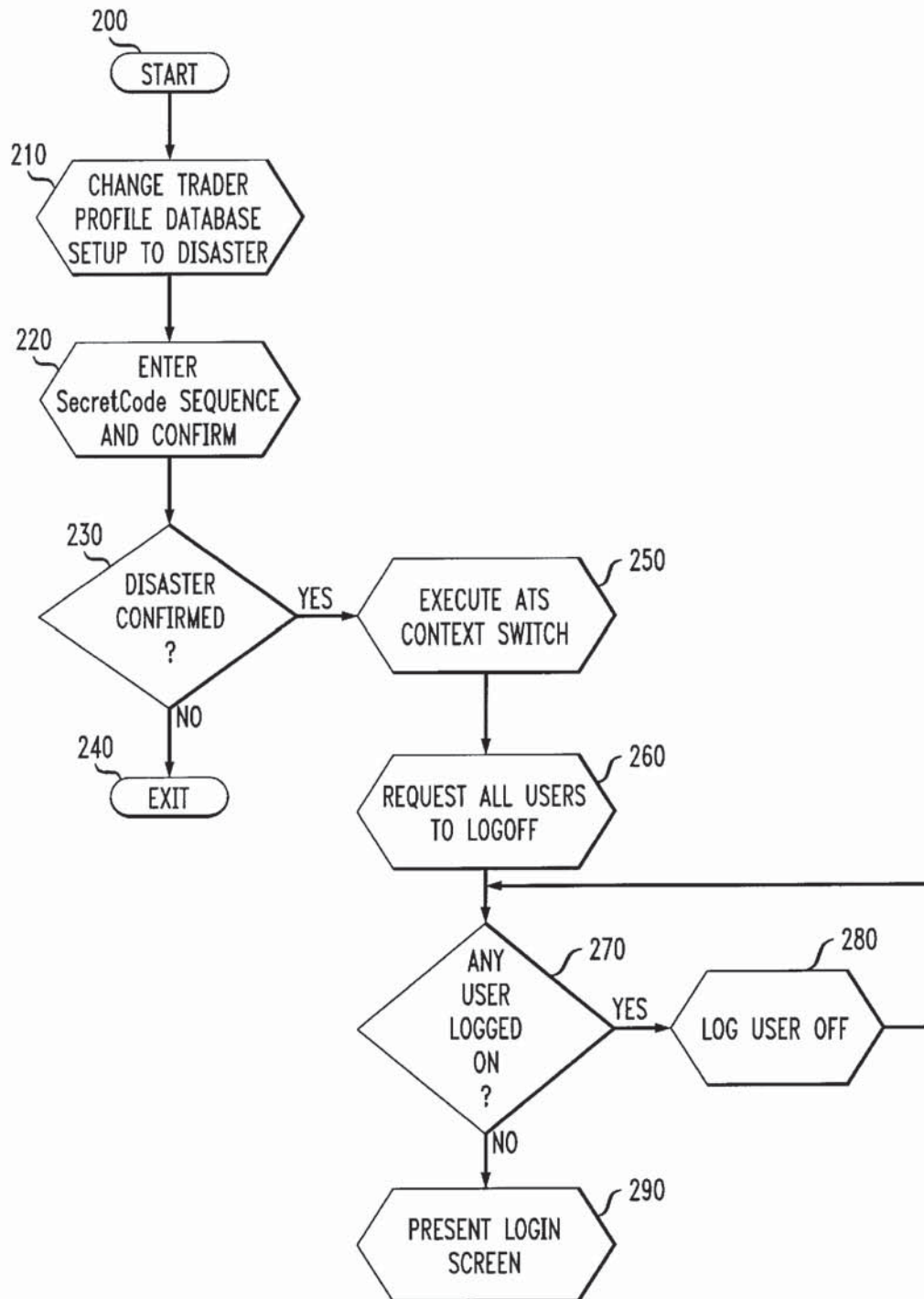
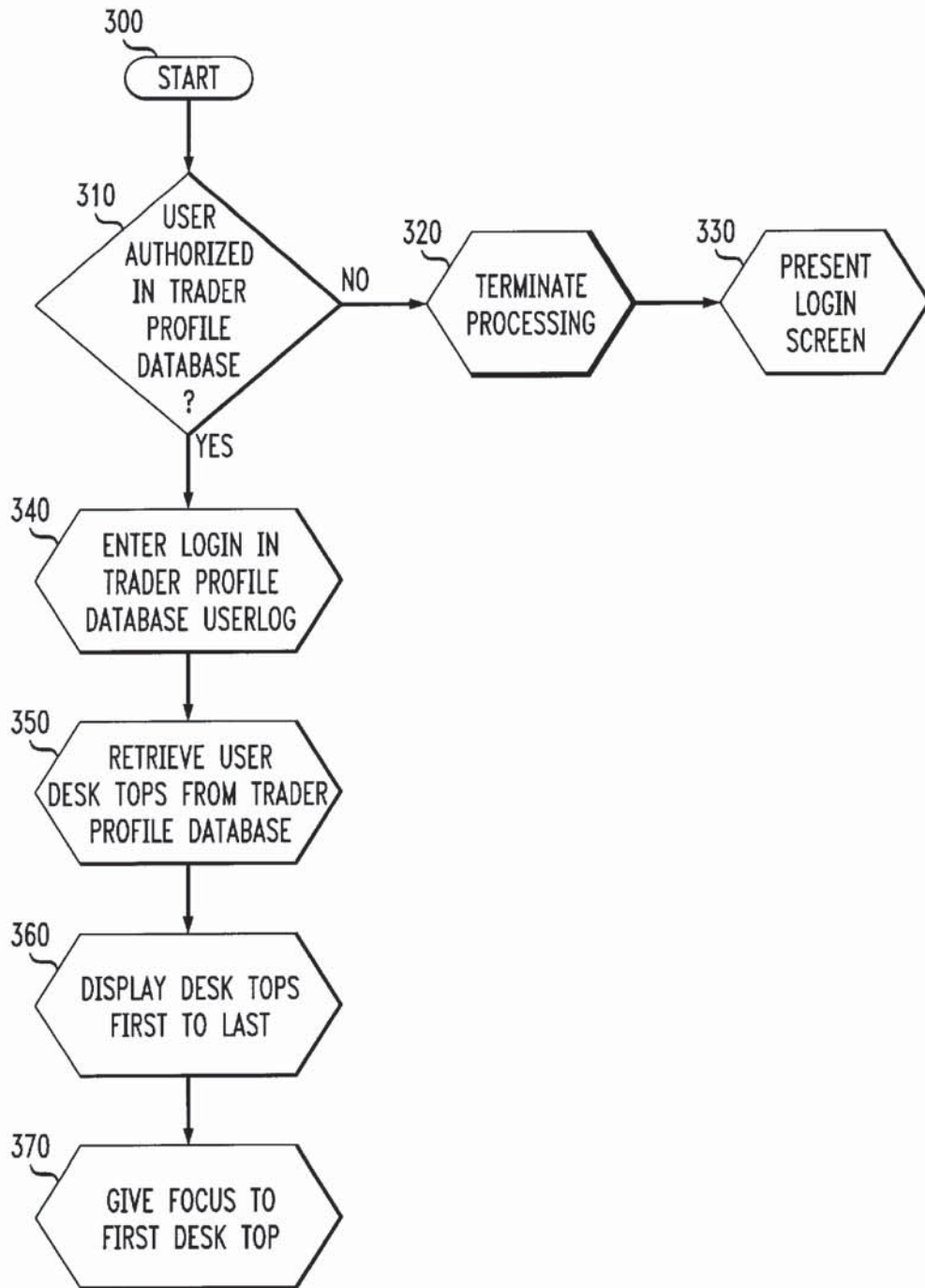


FIG. 4

DYNAMIC WORKSTATION CONFIGURATION VIA LOGIN (SIGNON)



Explore Litigation Insights

Docket Alarm provides insights to develop a more informed litigation strategy and the peace of mind of knowing you're on top of things.

Real-Time Litigation Alerts



Keep your litigation team up-to-date with **real-time alerts** and advanced team management tools built for the enterprise, all while greatly reducing PACER spend.

Our comprehensive service means we can handle Federal, State, and Administrative courts across the country.

Advanced Docket Research



With over 230 million records, Docket Alarm's cloud-native docket research platform finds what other services can't. Coverage includes Federal, State, plus PTAB, TTAB, ITC and NLRB decisions, all in one place.

Identify arguments that have been successful in the past with full text, pinpoint searching. Link to case law cited within any court document via Fastcase.

Analytics At Your Fingertips



Learn what happened the last time a particular judge, opposing counsel or company faced cases similar to yours.

Advanced out-of-the-box PTAB and TTAB analytics are always at your fingertips.

API

Docket Alarm offers a powerful API (application programming interface) to developers that want to integrate case filings into their apps.

LAW FIRMS

Build custom dashboards for your attorneys and clients with live data direct from the court.

Automate many repetitive legal tasks like conflict checks, document management, and marketing.

FINANCIAL INSTITUTIONS

Litigation and bankruptcy checks for companies and debtors.

E-DISCOVERY AND LEGAL VENDORS

Sync your system to PACER to automate legal marketing.