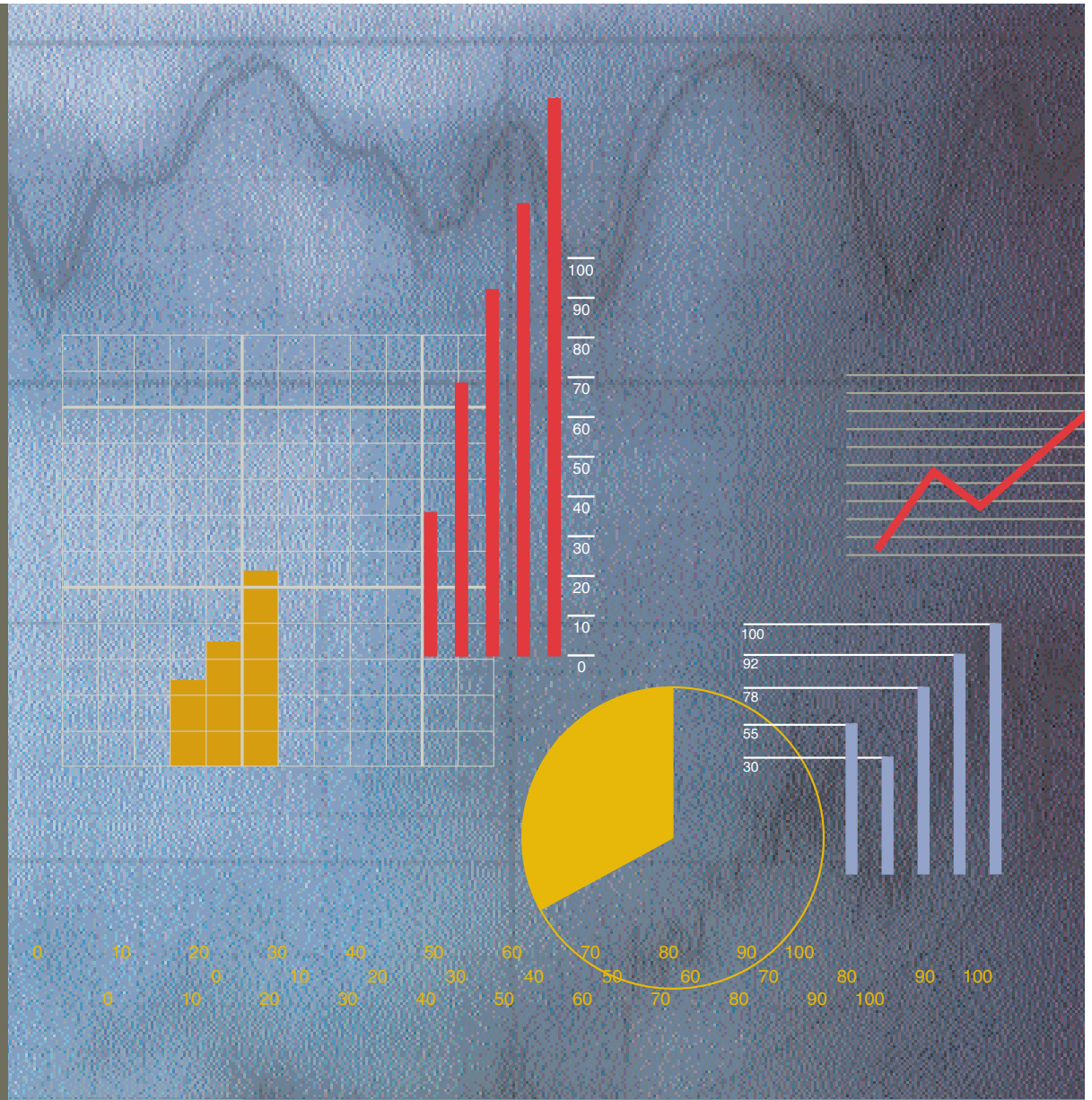


National Cancer Institute



2005 Fact Book

U.S. DEPARTMENT
OF HEALTH AND
HUMAN SERVICES
National Institutes
of Health

National Cancer Institute

2005 Fact Book

U.S. DEPARTMENT
OF HEALTH AND
HUMAN SERVICES

DOCKET
A L A R M

Find authenticated court documents without watermarks at docketalarm.com.

The information set forth in this publication is compiled and amended annually by the financial management staff of the National Cancer Institute and is intended primarily for use by members of the Institute, principal advisory groups to the Institute and others involved in the administration and management of the National Cancer Program. Questions regarding any of the information contained herein may be directed to the Financial Management Branch, National Cancer Institute, 9000 Rockville Pike, Bethesda, Maryland, 20892.

TABLE OF CONTENTS

Executive Summary	Fiscal Year 2005 Annual Report.....	iii
Organization	Director's Biography.....	O-1
	Former Directors of the NCI.....	O-2
	National Cancer Advisory Board.....	O-3
	Boards of Scientific Counselors and Advisors	O-7
	President's Cancer Panel	O-8
	Executive Committee Members	O-8
	NCI Director's Consumer Liaison Group.....	O-9
	Organization Charts:	
	National Cancer Institute	O-10
	Office of the Director	O-11
	OD I: Office of Management	O-12
	OD II: Office of the Deputy Director	O-13
	OD II: Center for Strategic Scientific Initiatives	O-13
	OD II: Office of Education and Special Initiatives	O-13
	OD III: Office of Centers, Training and Resources	O-14
	OD IV: Center to Reduce Cancer Health Disparities	O-15
	OD IV: Office of Budget and Financial Management	O-15
	OD IV: Office of Science Planning and Assessment	O-15
	OD IV: Office of Communication.....	O-15
	Center for Cancer Research.....	O-16
	Division of Cancer Epidemiology and Genetics	O-18
	Division of Cancer Prevention.....	O-19
	Division of Cancer Control and Population Sciences.....	O-20
	Division of Cancer Treatment and Diagnosis.....	O-21
	Division of Cancer Biology	O-22
	Division of Extramural Activities.....	O-23
Cancer Statistics	Number of Deaths for the Five Leading Cancer Sites	C-1
	Relationship of Cancer to the Leading Causes of Death in the U.S.	C-1
	Estimated New Cancer Cases and Deaths.....	C-2
	The Cost of Cancer.....	C-3
	Average Years of Life Lost Per Person Dying of Cancer.....	C-4
	Five-Year Relative Survival Rates by Cancer Site.....	C-5
	Cancer Incidence Rates	C-6
	Cancer Mortality Rates Changes from 1992 to 2003.....	C-7
	Cancer Incidence Rates by Race	C-8
	Cancer Mortality Rates by Race	C-9
	The Prevalence of Cancer	C-10
Budget Data	NCI Budget	B-1
	Program Structure	B-2
	Extramural Funds	B-3
	NCI Obligations by Mechanism.....	B-4
	Division Obligations by Mechanism	B-5
	NIH Management Fund, Service & Supply Fund and GSA Rent...B-6	
	Special Sources of Funds.....	B-7

Extramural Programs	Funding for Various Research Areas.....	B-8
	Research Project Grants:	
	Number of Awards	E-1
	Requested, Awarded	E-2
	Awards by Activity Code	E-3
	Activity Code Descriptions	E-4
	Cancer Centers	
	By State	E-5
	Specialized Programs of Research Excellence (SPORE)	E-6
	National Research Service Awards – Pre and Post Doctoral Trainees	E-7
	Construction/Renovation Funding.....	E-8
	Grant and Contract Awards by State	E-9
	Grant and Contract Awards by Country	E-10
	Institutions Receiving More than \$15,000,000 in NCI Support	E-11
Historical Trends	Appropriations of the NCI	H-1
	Bypass Budget Requests	H-2
	Comparison of Bypass Requests and Appropriations of the NCI .	H-3
	Comparison of Dollars, Positions and Space.....	H-4
	Personnel Resources	H-5
	AIDS Funding History	H-6

This publication may be viewed on the World Wide Web by pointing a browser to the Financial Management Branch homepage on the National Cancer Institute's website: www.nci.nih.gov or www.cancer.gov.

Explore Litigation Insights

Docket Alarm provides insights to develop a more informed litigation strategy and the peace of mind of knowing you're on top of things.

Real-Time Litigation Alerts



Keep your litigation team up-to-date with **real-time alerts** and advanced team management tools built for the enterprise, all while greatly reducing PACER spend.

Our comprehensive service means we can handle Federal, State, and Administrative courts across the country.

Advanced Docket Research



With over 230 million records, Docket Alarm's cloud-native docket research platform finds what other services can't. Coverage includes Federal, State, plus PTAB, TTAB, ITC and NLRB decisions, all in one place.

Identify arguments that have been successful in the past with full text, pinpoint searching. Link to case law cited within any court document via Fastcase.

Analytics At Your Fingertips



Learn what happened the last time a particular judge, opposing counsel or company faced cases similar to yours.

Advanced out-of-the-box PTAB and TTAB analytics are always at your fingertips.

API

Docket Alarm offers a powerful API (application programming interface) to developers that want to integrate case filings into their apps.

LAW FIRMS

Build custom dashboards for your attorneys and clients with live data direct from the court.

Automate many repetitive legal tasks like conflict checks, document management, and marketing.

FINANCIAL INSTITUTIONS

Litigation and bankruptcy checks for companies and debtors.

E-DISCOVERY AND LEGAL VENDORS

Sync your system to PACER to automate legal marketing.