



US006118450A

United States Patent [19]

[11] Patent Number: **6,118,450**

Proehl et al.

[45] Date of Patent: **Sep. 12, 2000**

[54] **GRAPHIC USER INTERFACE THAT IS USABLE AS A PC INTERFACE AND AN A/V INTERFACE**

5,754,172	5/1998	Kubota et al.	345/302
5,794,249	8/1998	Orsolini et al.	707/104
5,801,694	9/1998	Gershen	345/339
5,805,538	9/1998	Kamada et al.	369/34
5,864,868	1/1999	Contois	707/104
5,867,457	2/1999	Parvulescu et al.	369/33

[75] Inventors: **Andrew M. Proehl**, New York; **Kimberly Mingo**, Brooklyn, both of N.Y.; **Rich Gioscia**, Mahwah, N.J.

Primary Examiner—Raymond J. Bayerl
Assistant Examiner—Cuong T. Thai
Attorney, Agent, or Firm—Frommer Lawrence & Haug, LLP; William S. Frommer; Gordon Kessler

[73] Assignees: **Sony Corporation**, Tokyo, Japan; **Sony Electronics, Inc.**, Park Ridge, N.J.

[21] Appl. No.: **09/054,997**

[57] ABSTRACT

[22] Filed: **Apr. 3, 1998**

A graphic user interface for use with a multi-recording media storage apparatus includes a determiner for determining the identity of at least one of a plurality of recording media retained within the apparatus and an accumulator for accumulating statistical information regarding the identity of that medium. Additional information is obtained from an external database based upon the identity of the recording medium, and further additional information is obtained from an external information source in accordance with the accumulated statistical information. The graphic user interface allows a user to view and manipulate the additional information and the further additional information in order to select a particular recording medium for playing, or to perform various other operations.

[51] Int. Cl.⁷ **G06F 3/00**; G11B 27/10

[52] U.S. Cl. **345/349**; 345/302; 345/329; 369/30; 369/34; 707/104; 709/203

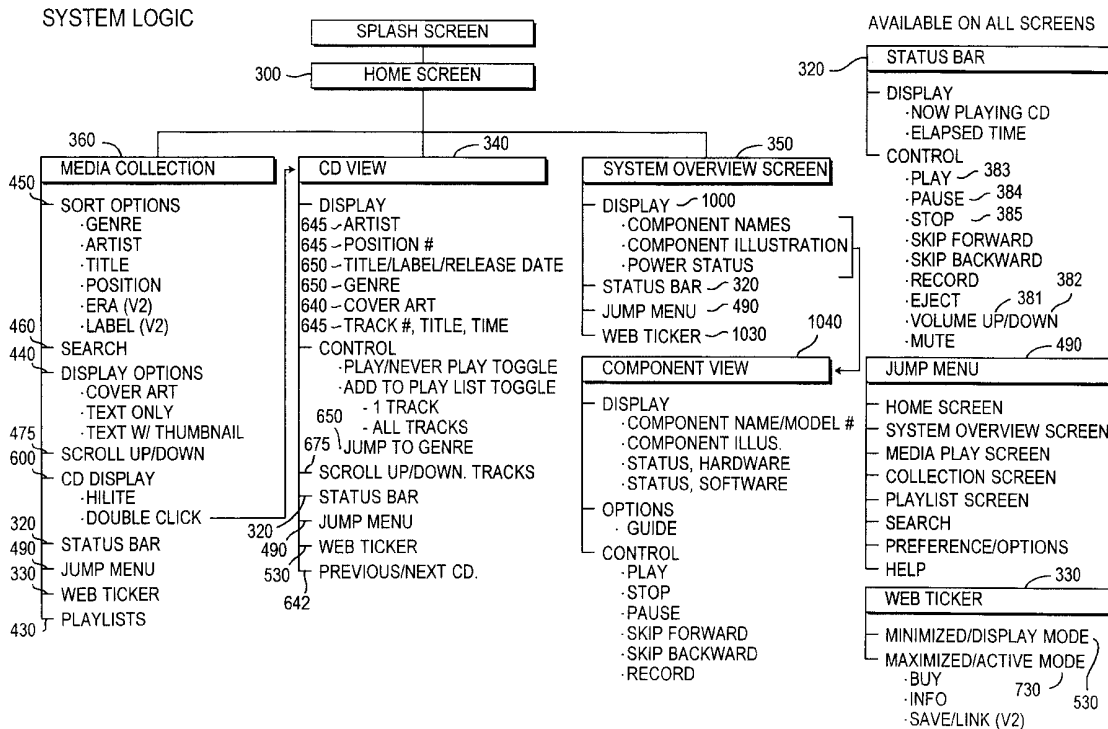
[58] Field of Search 345/328, 327, 345/302, 349, 970, 978, 353, 357, 329; 386/55, 66, 54, 69, 70; 707/501, 104; 369/30, 32, 34; 709/203

[56] References Cited

U.S. PATENT DOCUMENTS

5,553,221	9/1996	Reimer et al.	345/333
5,587,979	12/1996	Bluthgen	369/32
5,627,657	5/1997	Park	386/70
5,740,134	4/1998	Peterson	369/30

74 Claims, 12 Drawing Sheets



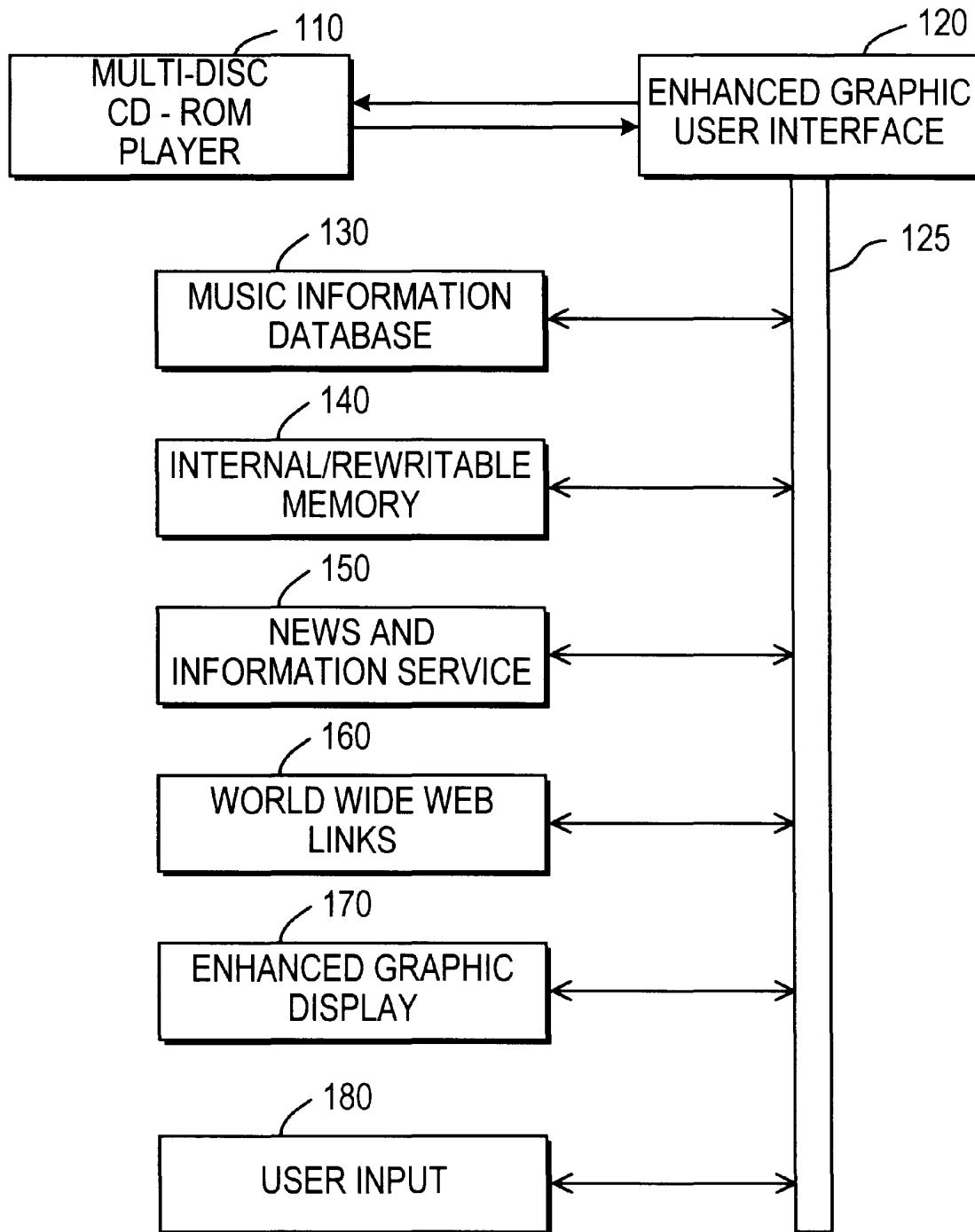


FIG. 1

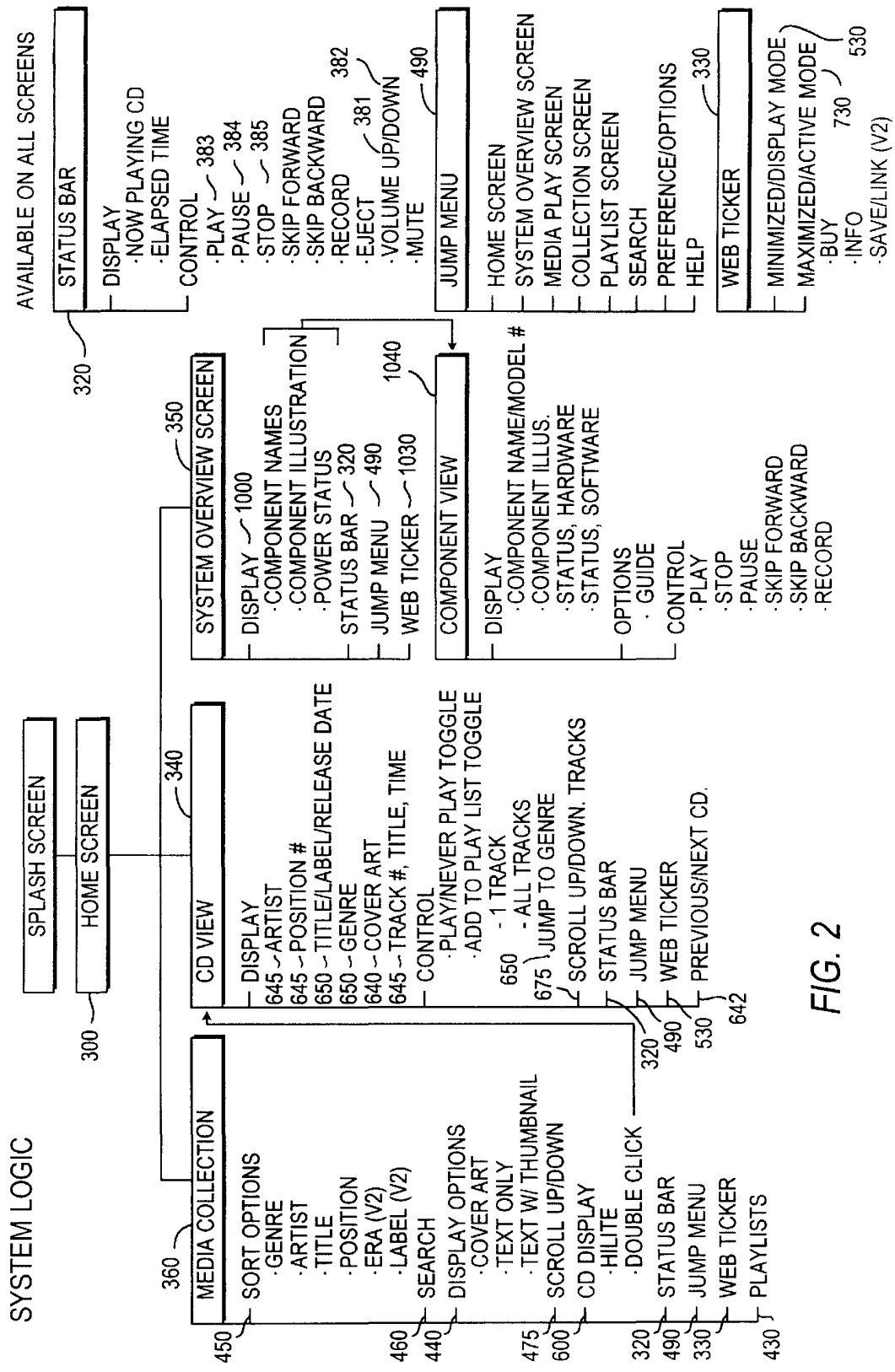


FIG. 2

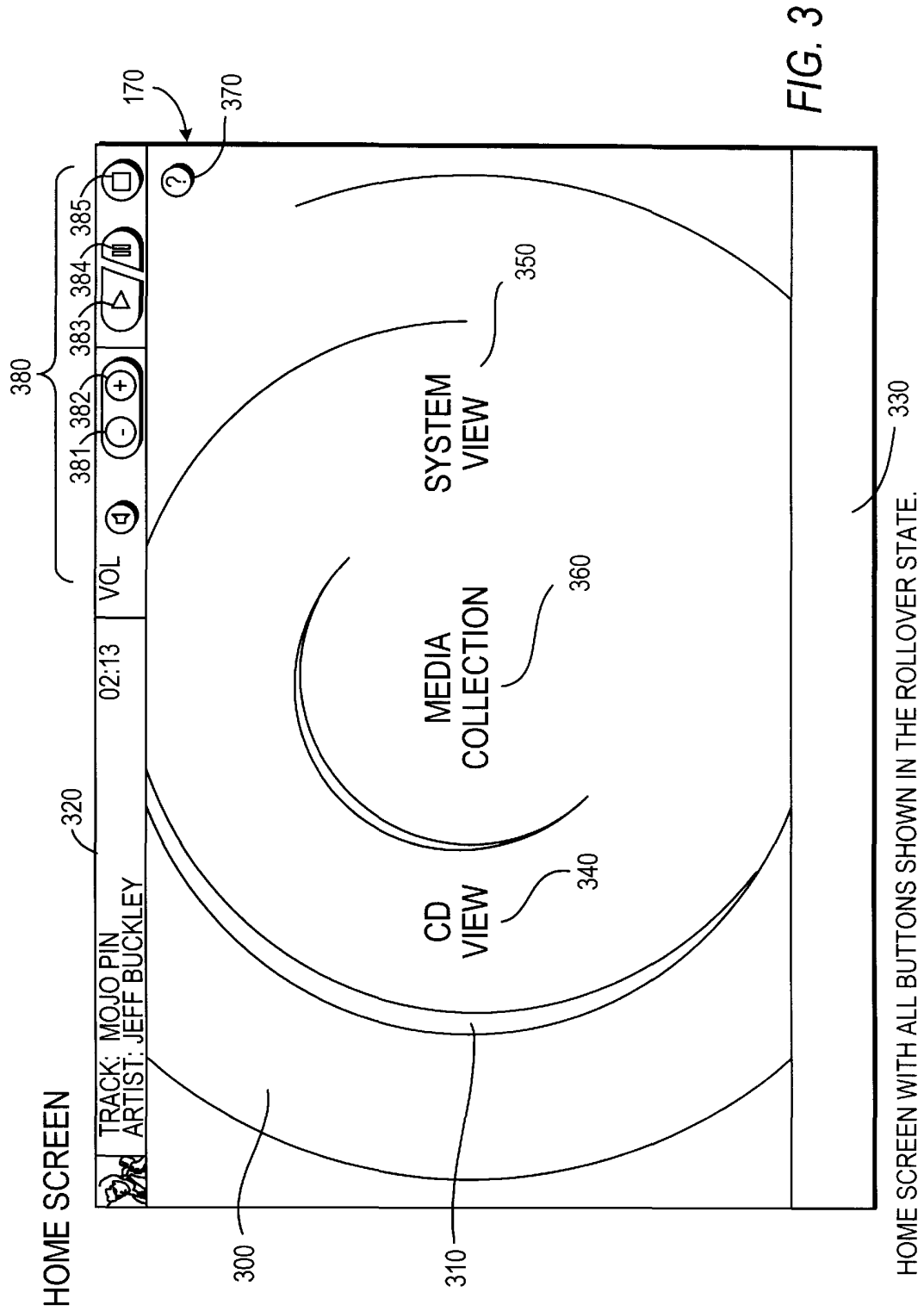


FIG. 3

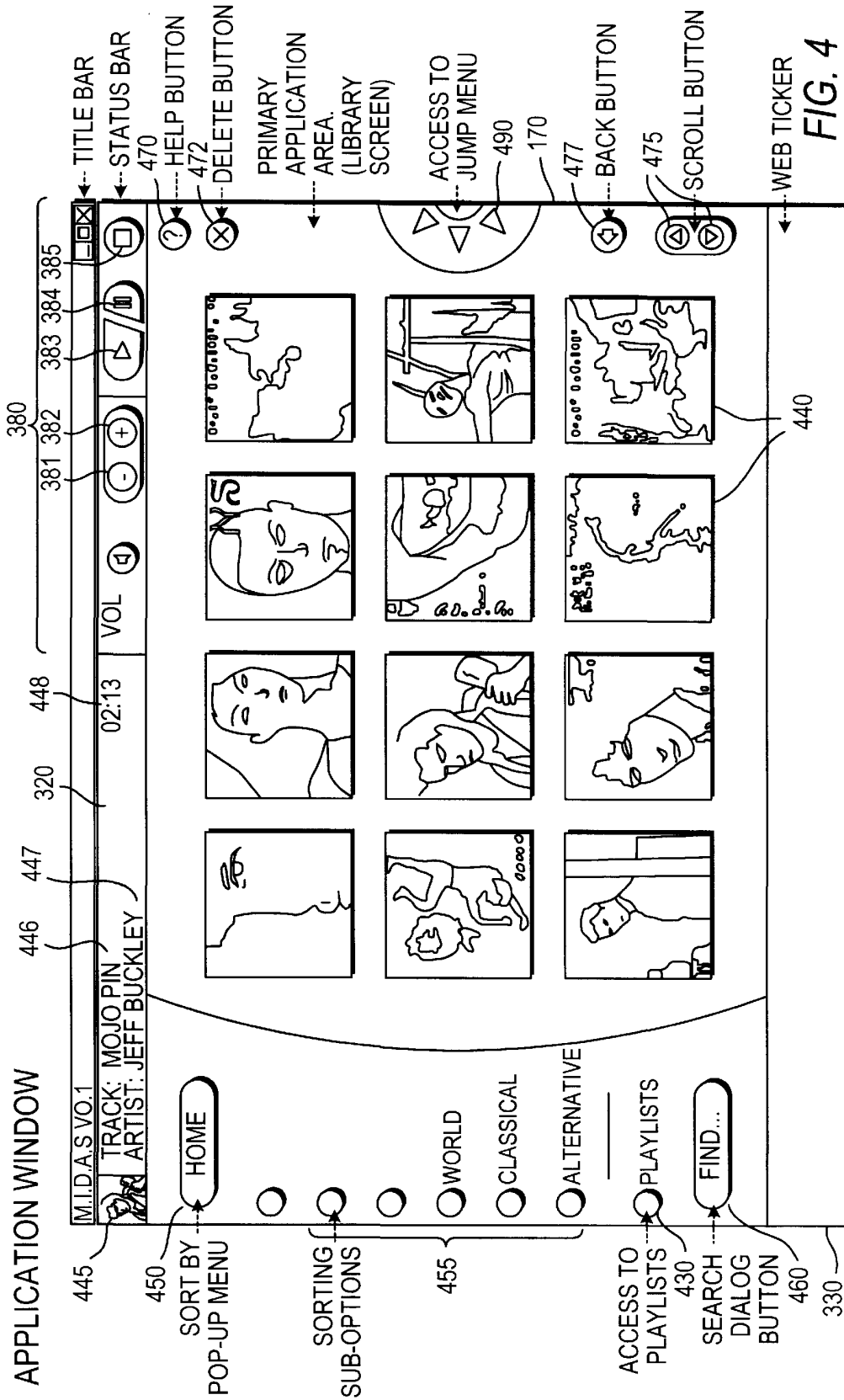


FIG. 4

MIDAS OCCUPIES A STANDARD WINDOWS 95 APPLICATION WINDOW. THE VIEW ABOVE IS OF THE LIBRARY SCREEN. ALL BUTTONS SHOWN IN THE ROLLOVER STATE

Explore Litigation Insights

Docket Alarm provides insights to develop a more informed litigation strategy and the peace of mind of knowing you're on top of things.

Real-Time Litigation Alerts



Keep your litigation team up-to-date with **real-time alerts** and advanced team management tools built for the enterprise, all while greatly reducing PACER spend.

Our comprehensive service means we can handle Federal, State, and Administrative courts across the country.

Advanced Docket Research



With over 230 million records, Docket Alarm's cloud-native docket research platform finds what other services can't. Coverage includes Federal, State, plus PTAB, TTAB, ITC and NLRB decisions, all in one place.

Identify arguments that have been successful in the past with full text, pinpoint searching. Link to case law cited within any court document via Fastcase.

Analytics At Your Fingertips



Learn what happened the last time a particular judge, opposing counsel or company faced cases similar to yours.

Advanced out-of-the-box PTAB and TTAB analytics are always at your fingertips.

API

Docket Alarm offers a powerful API (application programming interface) to developers that want to integrate case filings into their apps.

LAW FIRMS

Build custom dashboards for your attorneys and clients with live data direct from the court.

Automate many repetitive legal tasks like conflict checks, document management, and marketing.

FINANCIAL INSTITUTIONS

Litigation and bankruptcy checks for companies and debtors.

E-DISCOVERY AND LEGAL VENDORS

Sync your system to PACER to automate legal marketing.