

DTE power over MDI

DTE Discovery Process Proposal

Robert Muir



November, 1999

IEEE Kauai

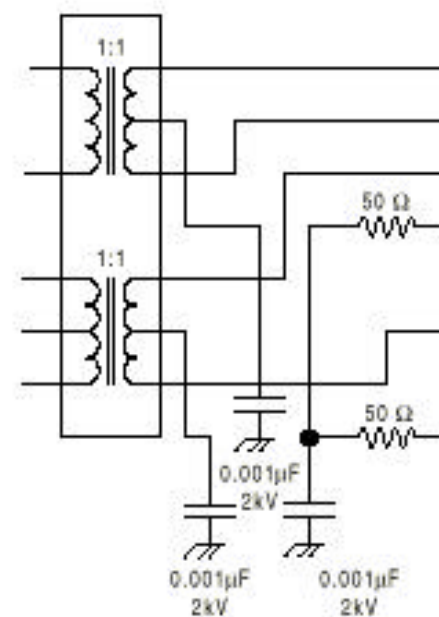
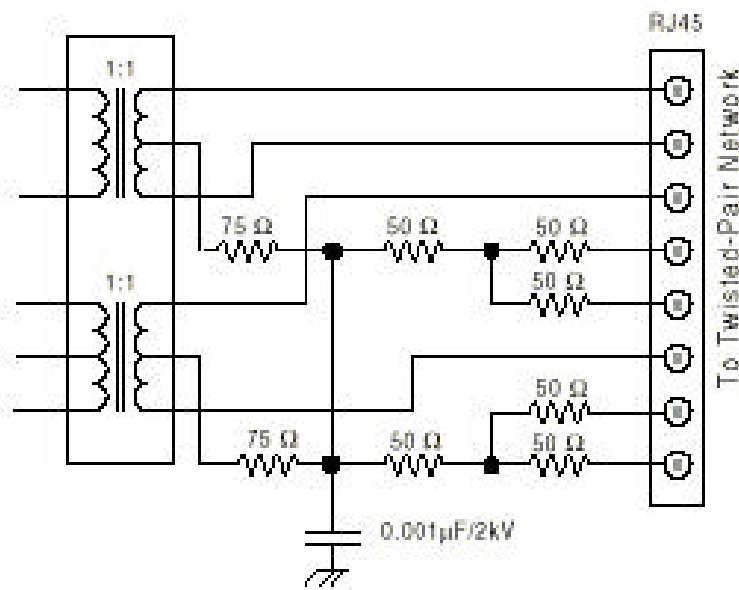
Agenda

- **General MDI link description.**
- **Level One discovery process proposal**
- **Discovery process alternatives - review**
- **Conclusions**
- **Q and A**

MDI Link Description

- **Certain assumption have been made about various components of the link based upon both customer and vendor feedback.**
 - Link using CAT3 or CAT5 cable will have loop impedance of 30 Ohms.
 - Power requirement at the DTE will be 8-9 Watts thus require to provide 11-12 Watts from the switch or other supplying device.
 - Voltage should be a maximum of 45V d.c. (40V +/- 10% tolerance).
 - Current will be injected via the center taps using a Phantom power method on the TX and RX pairs.
 - Magnetics will increase in height to accommodate the increased current carrying capability.
 - The Bob Smith Termination will be changed to remove termination between Magnetics center taps.
 - Discovery process will be resident in the PHY device.
- **Note that there is no change required to the PHY or MAC in the Client DTE**

Bob Smith Terminations



MDI Link Description

- **Certain assumption have been made about various components of the link based upon both customer and vendor feedback.**
 - Link using CAT3 or CAT5 cable will have loop impedance of 30 Ohms.
 - Power requirement at the DTE will be 8-9 Watts thus require to provide 11-12 Watts from the switch or other supplying device.
 - Voltage should be a maximum of 45V d.c. (40V +/- 10% tolerance).
 - Current will be injected via the center taps using a Phantom power method on the TX and RX pairs.
 - Magnetics will increase in height to accommodate the increased current carrying capability.
 - The Bob Smith Termination will be changed to remove termination between Magnetics center taps.
 - Discovery process will be resident in the PHY device.
- **Note that there is no change required to the PHY or MAC in the Client DTE**

Explore Litigation Insights

Docket Alarm provides insights to develop a more informed litigation strategy and the peace of mind of knowing you're on top of things.

Real-Time Litigation Alerts



Keep your litigation team up-to-date with **real-time alerts** and advanced team management tools built for the enterprise, all while greatly reducing PACER spend.

Our comprehensive service means we can handle Federal, State, and Administrative courts across the country.

Advanced Docket Research



With over 230 million records, Docket Alarm's cloud-native docket research platform finds what other services can't. Coverage includes Federal, State, plus PTAB, TTAB, ITC and NLRB decisions, all in one place.

Identify arguments that have been successful in the past with full text, pinpoint searching. Link to case law cited within any court document via Fastcase.

Analytics At Your Fingertips



Learn what happened the last time a particular judge, opposing counsel or company faced cases similar to yours.

Advanced out-of-the-box PTAB and TTAB analytics are always at your fingertips.

API

Docket Alarm offers a powerful API (application programming interface) to developers that want to integrate case filings into their apps.

LAW FIRMS

Build custom dashboards for your attorneys and clients with live data direct from the court.

Automate many repetitive legal tasks like conflict checks, document management, and marketing.

FINANCIAL INSTITUTIONS

Litigation and bankruptcy checks for companies and debtors.

E-DISCOVERY AND LEGAL VENDORS

Sync your system to PACER to automate legal marketing.