

[54] DRY ETCHING METHOD FOR ORGANIC MATERIAL LAYERS

[75] Inventors: Iwao Higashikawa; Tsunetoshi Arikado, both of Tokyo, Japan

[73] Assignee: Tokyo Shibaura Denki Kabushiki Kaisha, Kanagawa, Japan

[21] Appl. No.: 552,254

[22] Filed: Nov. 16, 1983

[30] Foreign Application Priority Data

Mar. 8, 1983 [JP] Japan 58-37938

[51] Int. Cl.³ B44C 1/22; C03C 15/00; C03C 25/06; B29C 17/08

[52] U.S. Cl. 156/643; 156/646; 156/655; 156/659.1; 156/668; 156/345; 204/192 E; 204/298; 252/79.1

[58] Field of Search 156/643, 646, 655, 659.1, 156/668, 345; 204/164, 192 E, 298; 252/79.1; 427/38, 39, 43.1

[56] References Cited

U.S. PATENT DOCUMENTS

4,374,699 2/1983 Sanders et al. 156/643
4,381,967 5/1983 Sanders et al. 156/643

OTHER PUBLICATIONS

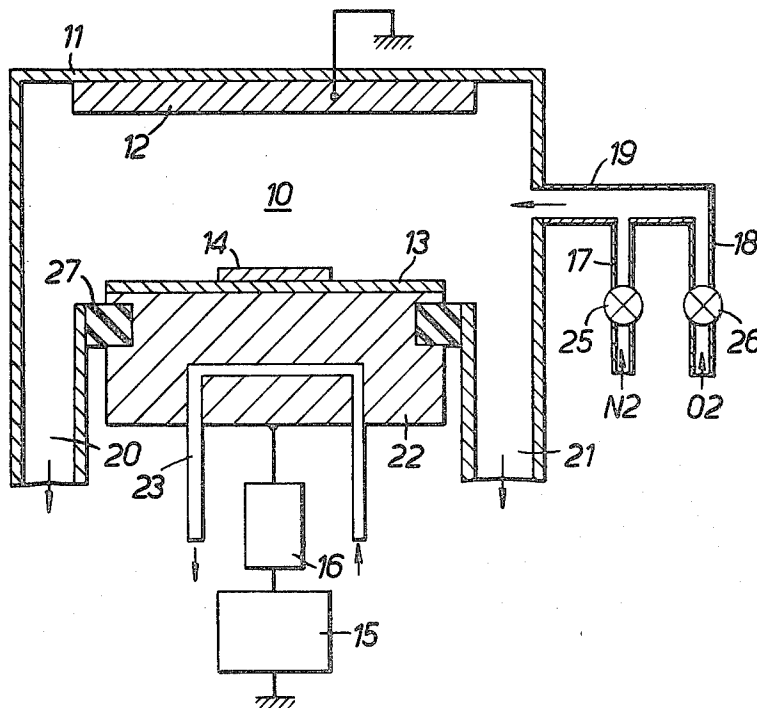
M. Hatzakis, "Multilayer Resist Systems for Lithography", *Solid State Technology*, Aug. 1981, pp. 74-80.
J. Moran et al., "High Resolution, Steep Profile, Resist Patterns", *The Bell System Technical Journal*, vol. 58, No. 5, May-Jun. 1979, pp. 1026-1036.

Primary Examiner—William A. Powell
Attorney, Agent, or Firm—Banner, Birch, McKie & Beckett

[57] ABSTRACT

A dry etching method for organic material layers is disclosed which utilizes a parallel plate electrode type plasma etching apparatus. An etching gas containing nitrogen as its primary constituent is introduced into the apparatus, and then the organic material layers are anisotropically etched by applying a high frequency electric power to the electrodes to produce a plasma.

6 Claims, 8 Drawing Figures



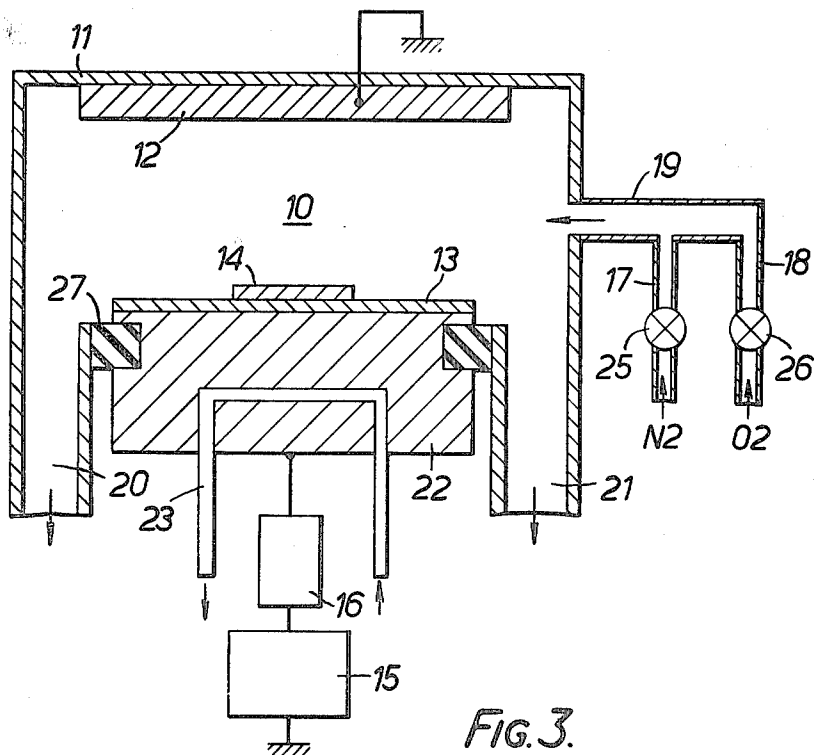
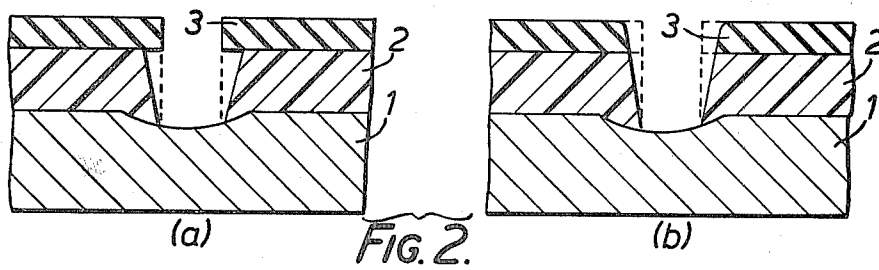
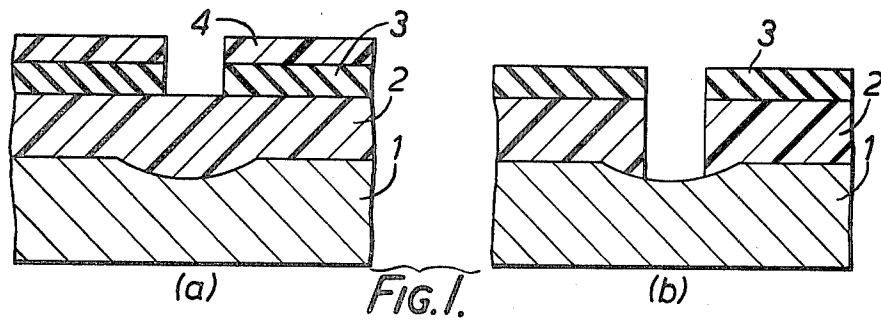


FIG. 3.

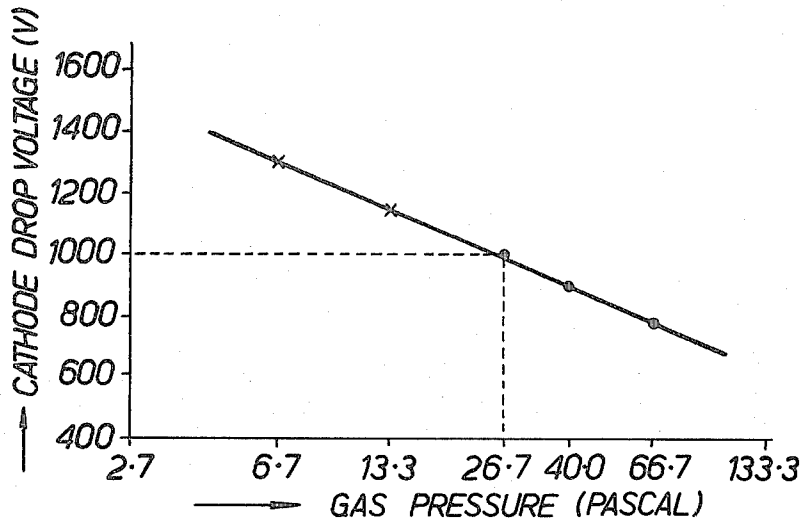


FIG. 4.

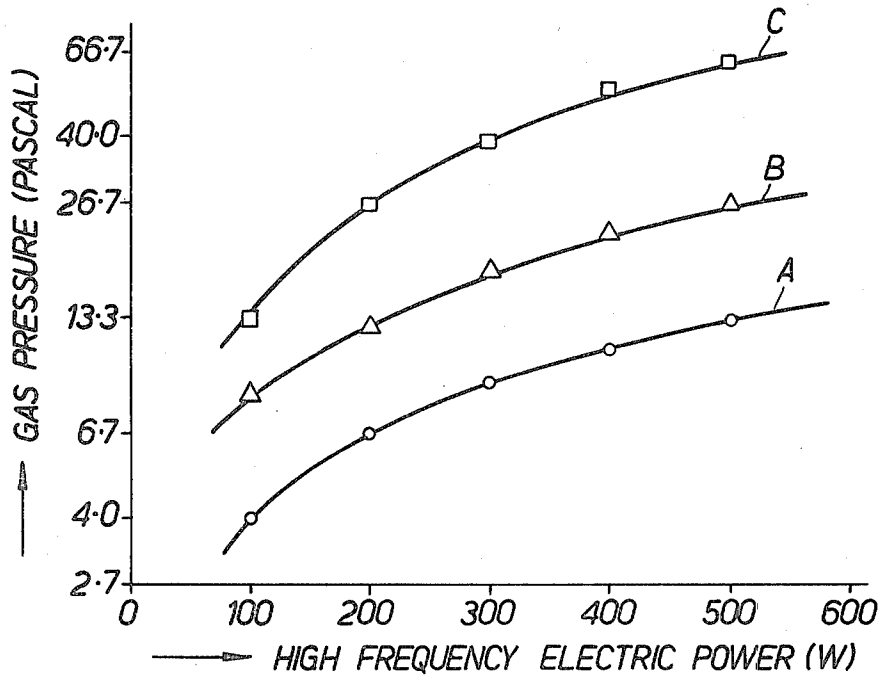


FIG. 5.

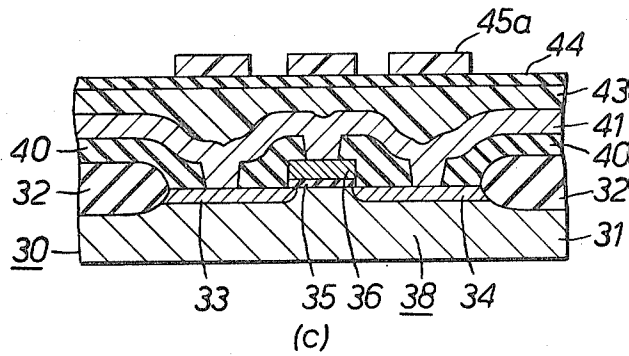
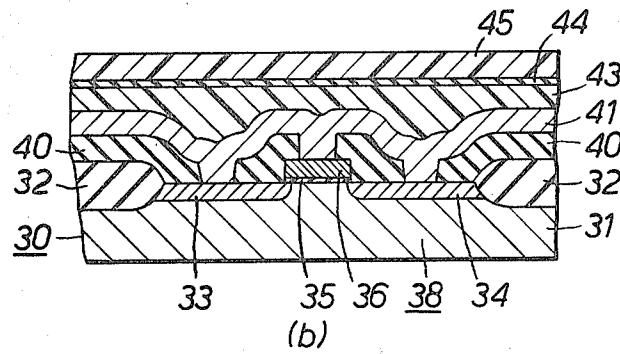
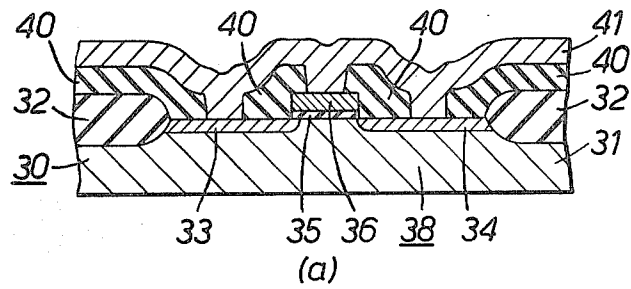


FIG. 6.

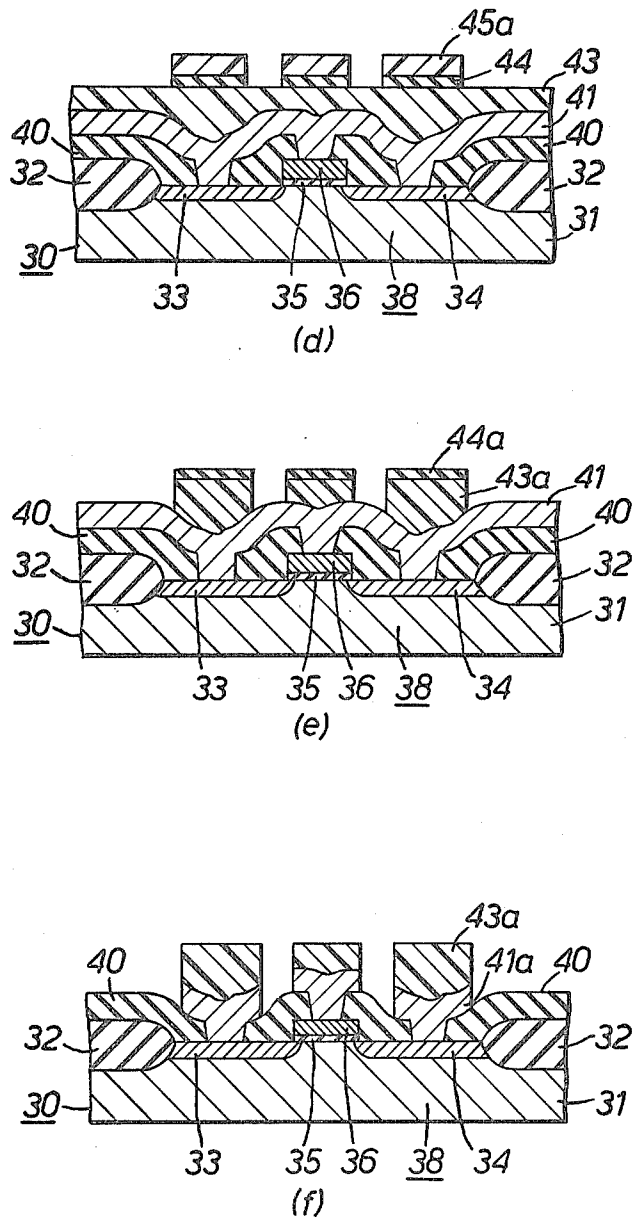


FIG. 6.

Explore Litigation Insights

Docket Alarm provides insights to develop a more informed litigation strategy and the peace of mind of knowing you're on top of things.

Real-Time Litigation Alerts



Keep your litigation team up-to-date with **real-time alerts** and advanced team management tools built for the enterprise, all while greatly reducing PACER spend.

Our comprehensive service means we can handle Federal, State, and Administrative courts across the country.

Advanced Docket Research



With over 230 million records, Docket Alarm's cloud-native docket research platform finds what other services can't. Coverage includes Federal, State, plus PTAB, TTAB, ITC and NLRB decisions, all in one place.

Identify arguments that have been successful in the past with full text, pinpoint searching. Link to case law cited within any court document via Fastcase.

Analytics At Your Fingertips



Learn what happened the last time a particular judge, opposing counsel or company faced cases similar to yours.

Advanced out-of-the-box PTAB and TTAB analytics are always at your fingertips.

API

Docket Alarm offers a powerful API (application programming interface) to developers that want to integrate case filings into their apps.

LAW FIRMS

Build custom dashboards for your attorneys and clients with live data direct from the court.

Automate many repetitive legal tasks like conflict checks, document management, and marketing.

FINANCIAL INSTITUTIONS

Litigation and bankruptcy checks for companies and debtors.

E-DISCOVERY AND LEGAL VENDORS

Sync your system to PACER to automate legal marketing.