

# United States Patent [19]

Wood et al.

[11] Patent Number: **4,676,237**

[45] Date of Patent: **Jun. 30, 1987**

[54] **INHALER DEVICE**

[75] Inventors: **John D. Wood, Cambridge; Julian M. Coles, Elsworth; William R. S. Baxter, Cambridge, all of England**

[73] Assignee: **Boutade Worldwide Investments NV, Netherlands Antilles**

[21] Appl. No.: **821,597**

[22] Filed: **Jan. 23, 1986**

[30] **Foreign Application Priority Data**

Jan. 29, 1985 [ZA] South Africa ..... 85/0679

[51] Int. Cl.<sup>4</sup> ..... **A61M 15/00**

[52] U.S. Cl. .... **128/203.17; 128/204.13; 128/204.14**

[58] Field of Search ..... 128/203.17, 203.27, 128/204.13, 200.18, 200.21, 200.14; 261/104, 142, 153, 107, 154, DIG. 65, 78 A; 219/274, 272, 362; 122/366

[56] **References Cited**

**U.S. PATENT DOCUMENTS**

1,688,200 10/1928 Morgenthaler ..... 219/274

3,431,393 3/1969 Katsuda ..... 219/274  
4,110,419 8/1978 Miller ..... 128/204.13  
4,263,907 4/1981 Lindsey ..... 261/DIG. 65  
4,419,302 12/1983 Nishino et al. .... 128/204.13  
4,564,748 1/1986 Gupton ..... 128/203.27

**FOREIGN PATENT DOCUMENTS**

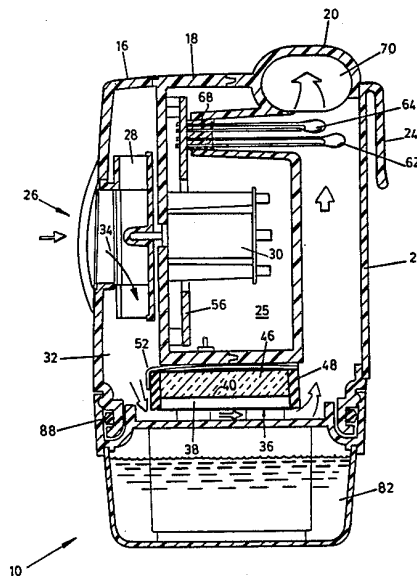
0043041 9/1982 Japan ..... 219/274  
1294808 11/1972 United Kingdom ..... 128/203.27

*Primary Examiner*—Henry J. Recla  
*Attorney, Agent, or Firm*—McGlew and Tuttle

[57] **ABSTRACT**

An inhaler device which includes a wick which draws water from a reservoir and which is in contact with a heated plate. Air is directed over the heated wick surface by means of a fan thereby to produce a stream of heated humid air. A sensor monitors the temperature of the heated air stream and a control circuit which is responsive to the sensor maintains this temperature substantially constant at a predetermined value. The heated humid air stream is available for inhalation by a patient for the treatment of certain ailments.

**7 Claims, 4 Drawing Figures**



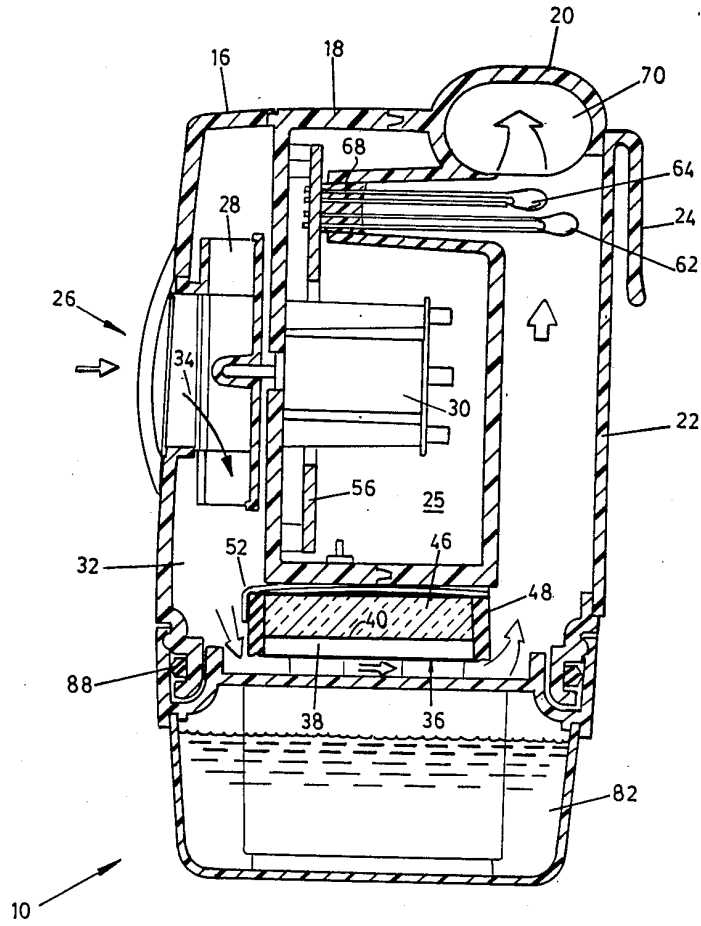


FIG. 1

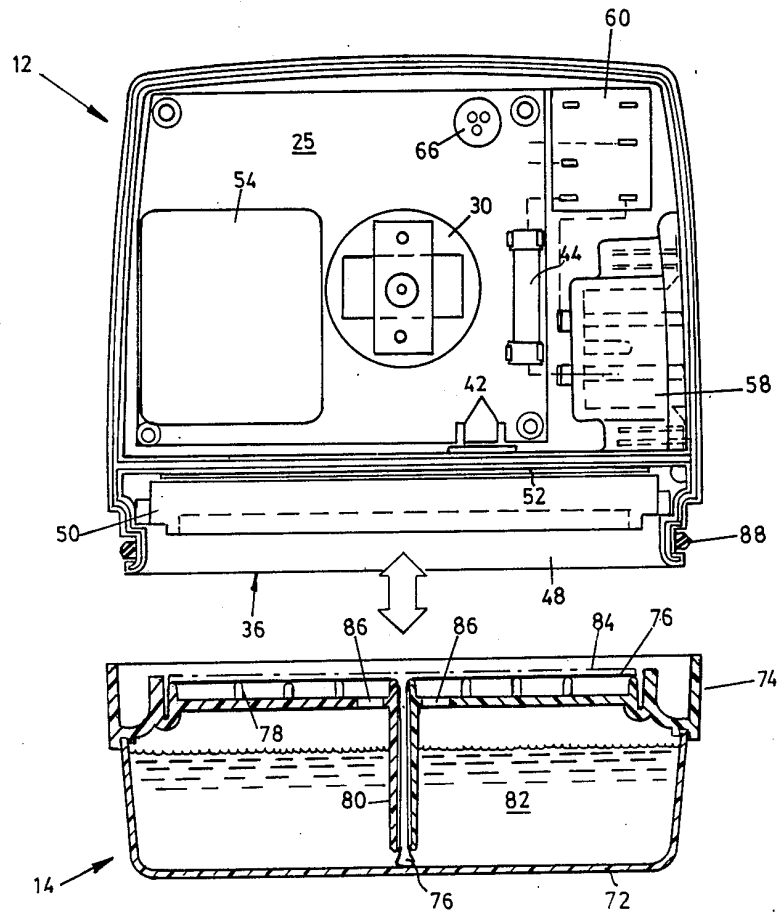
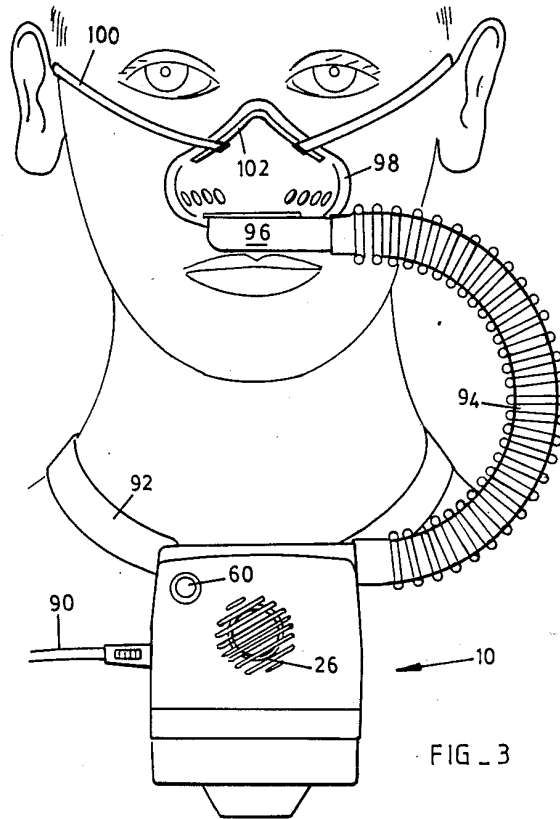


FIG. 2



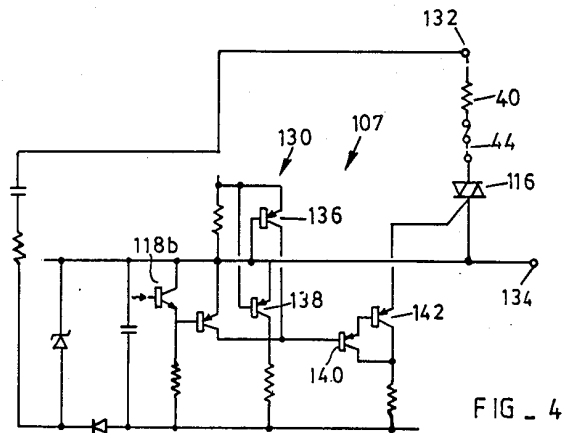
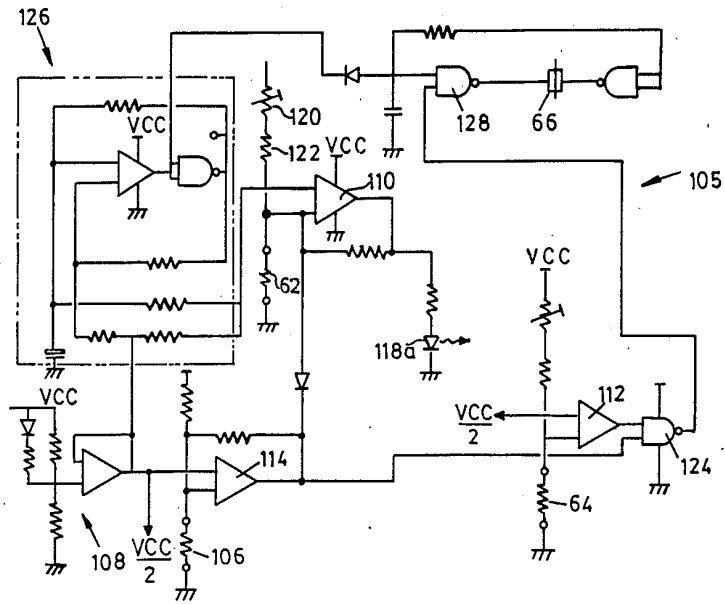
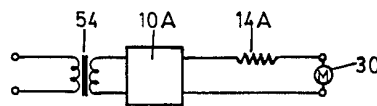


FIG. 4



# Explore Litigation Insights

Docket Alarm provides insights to develop a more informed litigation strategy and the peace of mind of knowing you're on top of things.

## Real-Time Litigation Alerts



Keep your litigation team up-to-date with **real-time alerts** and advanced team management tools built for the enterprise, all while greatly reducing PACER spend.

Our comprehensive service means we can handle Federal, State, and Administrative courts across the country.

## Advanced Docket Research



With over 230 million records, Docket Alarm's cloud-native docket research platform finds what other services can't. Coverage includes Federal, State, plus PTAB, TTAB, ITC and NLRB decisions, all in one place.

Identify arguments that have been successful in the past with full text, pinpoint searching. Link to case law cited within any court document via Fastcase.

## Analytics At Your Fingertips



Learn what happened the last time a particular judge, opposing counsel or company faced cases similar to yours.

Advanced out-of-the-box PTAB and TTAB analytics are always at your fingertips.

## API

Docket Alarm offers a powerful API (application programming interface) to developers that want to integrate case filings into their apps.

## LAW FIRMS

Build custom dashboards for your attorneys and clients with live data direct from the court.

Automate many repetitive legal tasks like conflict checks, document management, and marketing.

## FINANCIAL INSTITUTIONS

Litigation and bankruptcy checks for companies and debtors.

## E-DISCOVERY AND LEGAL VENDORS

Sync your system to PACER to automate legal marketing.