

EGF receptor gene mutations are common in lung cancers from "never smokers" and are associated with sensitivity of tumors to gefitinib and erlotinib

William Pao*^{†‡}, Vincent Miller^{†§}, Maureen Zakowski[¶], Jennifer Doherty*, Katerina Politi*, Inderpal Sarkaria^{||}, Bhuvanesh Singh^{||}, Robert Heelan**, Valerie Rusch^{||}, Lucinda Fulton^{††}, Elaine Mardis^{††}, Doris Kupfer^{††}, Richard Wilson^{††}, Mark Kris^{†§}, and Harold Varmus*

*Program in Cancer Biology and Genetics and Departments of [†]Medicine, ^{||}Surgery, [¶]Pathology, and ^{**}Radiology, Memorial Sloan-Kettering Cancer Center, 1275 York Avenue, New York, NY 10021; and ^{††}Genome Sequencing Center, Washington University School of Medicine, 4444 Forest Park Boulevard, St. Louis, MO 63108

Contributed by Harold Varmus, July 19, 2004

Somatic mutations in the tyrosine kinase (TK) domain of the epidermal growth factor receptor (EGFR) gene are reportedly associated with sensitivity of lung cancers to gefitinib (Iressa), kinase inhibitor. In-frame deletions occur in exon 19, whereas point mutations occur frequently in codon 858 (exon 21). We found from sequencing the EGFR TK domain that 7 of 10 gefitinib-sensitive tumors had similar types of alterations; no mutations were found in eight gefitinib-refractory tumors ($P = 0.004$). Five of seven tumors sensitive to erlotinib (Tarceva), a related kinase inhibitor for which the clinically relevant target is undocumented, had analogous somatic mutations, as opposed to none of 10 erlotinib-refractory tumors ($P = 0.003$). Because most mutation-positive tumors were adenocarcinomas from patients who smoked <100 cigarettes in a lifetime ("never smokers"), we screened EGFR exons 2–28 in 15 adenocarcinomas resected from untreated never smokers. Seven tumors had TK domain mutations, in contrast to 4 of 81 non-small cell lung cancers resected from untreated former or current smokers ($P = 0.0001$). Immunoblotting of lysates from cells transiently transfected with various EGFR constructs demonstrated that, compared to wild-type protein, an exon 19 deletion mutant induced diminished levels of phosphotyrosine, whereas the phosphorylation at tyrosine 1092 of an exon 21 point mutant was inhibited at 10-fold lower concentrations of drug. Collectively, these data show that adenocarcinomas from never smokers comprise a distinct subset of lung cancers, frequently containing mutations within the TK domain of EGFR that are associated with gefitinib and erlotinib sensitivity.

Tyrosine kinases (TKs) regulate signaling pathways that control critical cellular activities (1). When overexpressed or activated by mutations, TKs can contribute to the development of cancers. If tumor cells depend on a mutant TK for survival, as illustrated by certain mouse models of cancer (2, 3), the mutated enzyme can fortuitously serve as an Achilles' heel for cancer therapy (4). Human examples include BCR-ABL-dependent chronic myelogenous and acute lymphoblastic leukemias (5), *KIT*- and *PDGFRA*-dependent gastrointestinal stromal tumors (6), and *PDGFRA*-dependent hypereosinophilic syndrome (7). In each disease, activated oncogenes encode TKs; inhibition by imatinib mesylate (Gleevec) leads to rapid and durable clinical responses.

EGFR is a TK of the ErbB family that is the presumptive target of the TK inhibitor (TKI) gefitinib. This drug is an anilinoquinazoline (Fig. 5, which is published as supporting information on the PNAS web site) that reversibly competes with ATP at a critical ATP-binding site (lysine 745; K745) within the epidermal growth factor (EGF) receptor (EGFR) protein (8, 9). *In vitro*, gefitinib selectively inhibits the kinase activity of EGFR versus a handful of other kinases (10). In two phase II trials, radiographic regressions of tumors were observed in 28% of patients treated in Japan and 10% of those studied in Europe and the U.S. (11, 12). Dramatic responses occurred within the first two weeks of initiating therapy

(e.g., ref. 13), similar to those seen in the murine and human examples noted above. Assuming that the drug did affect a kinase, these kinds of responses suggested that at least some lung tumors depended on a specific genetic lesion for tumor survival. However, when gefitinib was approved as second- or third-line treatment for patients with non-small cell lung cancer (NSCLC), the clinically relevant target(s) of the drug in human tumors were unknown. Analyses of both preclinical xenograft models (14) and specimens from gefitinib-sensitive and -refractory tumors (15) did not reveal any obvious relationship between EGFR expression levels and tumor sensitivity. Retrospective epidemiologic analyses suggested that gefitinib is more likely to be effective in Japanese patients (11), individuals with adenocarcinomas of the bronchioloalveolar carcinoma (BAC) subtype, and "never smokers" (16).

Recently, two groups have shown that mutations in the TK domain of EGFR are associated with sensitivity of NSCLC to gefitinib (17, 18). In total, deletions or amino acid substitutions in exons 18, 19, and 21 of EGFR were found in 13 of 14 tumors sensitive to the drug, but in none of 11 tumors with no response. Lynch and colleagues (17) found mutations in another 2 of 25 primary NSCLCs, and Paez *et al.* (18) found EGFR mutations in 16 of 119 unselected tumors, with a striking predominance of mutations found in 15 of 58 (28%) specimens from Japan as compared to 1 of 61 from the U.S. (2%).

To confirm and extend data on gefitinib sensitivity, we examined the status of the TK domain of EGFR in tumors that were sensitive and refractory to the drug. To determine whether a related but distinct TKI, erlotinib (Fig. 5), "targets" a similar subset of NSCLCs, we also profiled erlotinib-sensitive and -refractory tumors. The clinically relevant target of erlotinib has not yet been documented. To examine whether smoking history is predictive of the likelihood of EGFR mutations, we determined the incidence of EGFR TK domain mutations in 96 resected NSCLCs from never smokers, as well as former and current smokers who had never received a TKI. Finally, in an effort to explain the selective advantage of cells with mutant EGFR and the drug sensitivity conferred upon mutant-bearing tumors, we began to characterize some biochemical properties of EGFR mutants *in vitro*.

Freely available online through the PNAS open access option.

Abbreviations: TK, tyrosine kinase; TKI, TK inhibitor; EGF, epidermal growth factor; EGFR, EGF receptor; t-EGFR, total EGFR; p-EGFR, phospho-EGFR; NSCLC, non-small cell lung cancer; BAC, bronchioloalveolar carcinoma.

[†]To whom correspondence should be addressed. E-mail: paow@mskcc.org.

[§]V.M. has received research funding from Genentech (codeveloper of erlotinib). He has received honoraria from AstraZeneca (maker of gefitinib) for consultancy. M.K. has received research funding from AstraZeneca and research funding and consulting fees from Genentech and has represented AstraZeneca before the U.S. Food and Drug Administration.

© 2004 by The National Academy of Sciences of the USA

Table 1. Characteristics of patients sensitive to gefitinib (G) and erlotinib (E)

Patient	Sex	Smoking	Histology	Mutation	Duration	OS
G1	M	Former	BWFI	del E746-A750*	5+	5+
G2	F	Never	AWBF	del E746-A750	28	30+
G3	F	Never	AWBF	del L747-S752*	18	23+
G4	F	Never	AWBF	del E746-T751insl	9	14
G5	M	Never	AWBF	del E746-A750	8	15
G6	M	Never	AWBF	del E746-A750	5+	5+
G7	F	Former	ADENO	L858R	5	8
G8	F	Never	AWBF	None	7+	7+
G9	M	Former	BAC	None	10+	10+
G10	F	Never	SQUAM	None	9	16
E1	M	Never	AWBF	del L747-S752insQ	8+	8+
E2	M	Never	BAC	del E746-A750	8.5	21+
E3	F	Never	AWBF	R776C and L858R	13	22+
E4	M	Former	AWBF	L858R	3	3.5
E5	F	Never	AWBF	L858R	6	17+
E6	F	Former	AWBF	None	11	11+
E7	F	Former	AWBF	None	11	14+

M, male; F, female. Smoking indicates smoking history; never, smoked <100 cigarettes in a lifetime; former, smoked 100 or more cigarettes and quit >1 year prior to diagnosis of lung cancer. BWFI, BAC with focal invasion; AWBF, adenocarcinoma with BAC features; ADENO, adenocarcinoma; SQUAM, squamous. Mutation indicates amino acids affected in EGFR; for all tumor specimens, exons 18–24 of *EGFR*, which encode the TK domain, were examined; asterisks denote homozygous deletions; none, no mutation observed. Duration indicates months of drug-induced response. OS indicates months of overall survival after starting therapy with gefitinib or erlotinib. +, still on drug and/or alive at the time of writing of this manuscript. No mutations were observed in exons 18–24 in 8 and 10 patients refractory to gefitinib and erlotinib, respectively.

Methods

Tissue Procurement. Tumor specimens were obtained on protocols approved by the Institutional Review Board and the Human Tissue Utilization Committee of Memorial Sloan–Kettering Cancer Center. Paraffin blocks of tumor material, obtained from patients before systemic treatment for lung cancer, were collected retrospectively for patients on gefitinib ($n = 18$) and prospectively for patients on erlotinib ($n = 17$). Frozen tumor specimens from untreated patients with Stage I–IIIA NSCLC ($n = 96$) were prospectively collected at the time of surgical resection (*Supporting Text* and Table 3, which are published as supporting information on the PNAS web site).

Mutational Analyses of EGFR in Lung Tumors. Genomic DNA was derived from either tumors embedded in paraffin blocks or from fresh frozen tumors (see *Supporting Text* and Tables 4 and 5, which are published as supporting information on the PNAS web site for PCR primers). All sequencing reactions were performed in both forward and reverse directions, and all mutations were confirmed by PCR amplification of an independent DNA isolate. For drug-sensitive tumors that did not have mutations, sequences from exons 19 and 21 were also determined from at least two independently derived PCR products. Fisher's exact test was used to calculate P values.

Functional Analyses of Mutant EGFRs. EGFR has two numbering systems. The first denotes the initiating methionine in the signal sequence as amino acid –24. The second, used here, denotes the methionine as amino acid +1. Commercial antibodies, such as the Y1068-specific anti-phospho-EGFR, use the first nomenclature. To be consistent, we consider Y1068 as Y1092.

Mutations were introduced into full-length *EGFR* by using a QuikChange Site-Directed Mutagenesis kit (Stratagene; see *Supporting Text*). All mutant clones were fully resequenced to ensure that no additional mutations were introduced. cDNAs were cloned into pcDNA3.1(–) expression vectors (Invitrogen). For transient transfections, 293T human embryonic kidney cells were transfected (2×10^5 cells per well in six-well plates) by using FuGENE (Roche Applied Science) and 0.8 μ g of plasmid DNA. Cells were grown in

DMEM with high glucose, 10% FCS, 2 mM L-glutamine, 10 units/ml penicillin, and 10 μ g/ml streptomycin at 37°C and 5% CO₂. Cells were serum-starved in media containing 0.1% serum. EGF (Cell Signaling Technology, Beverly, MA) was used at 100 ng/ml. Cells were treated with various concentrations of gefitinib or erlotinib, which were provided by AstraZeneca and Genentech, respectively. At least three independent experiments were performed for all analyses.

Immunoblotting. See *Supporting Text* for details on cell lysis and immunoblotting. Specific proteins were detected by using enhanced chemiluminescence (Amersham Pharmacia) and the following antibodies: horseradish peroxidase (HRP)-conjugated anti-phosphotyrosine (RC20) 1:3,333 and anti-total EGFR 1:2,500 (BD Transduction Laboratories), anti-actin 1:2,000 (Sigma), anti-phospho-EGFR (Tyr-1068; Y1092) 1:1,000 (Cell Signaling Technology), HRP-conjugated anti-rabbit Ig 1:5,000 (Amersham Pharmacia), and HRP-conjugated anti-mouse IgG 1:2,000 (Roche Applied Science). Blots were stripped with Restore Stripping Buffer (Pierce) at 37°C for 15 min; stripping was verified by reexposure to film before reprobing. Densitometry was performed by using IMAGEQUANT V1.2 (Molecular Dynamics). At least three independent experiments were performed for all analyses.

Results

Mutations in EGFR Are Commonly Found in Lung Tumors Sensitive to Gefitinib. To ascertain whether mutations within the TK domain of *EGFR* are associated with sensitivity to the TKI, gefitinib (17, 18), we performed mutational profiling of exons 18–24 of *EGFR* in tumors from 10 patients who demonstrated a partial response or marked clinical improvement (defined in *Supporting Text*) when treated with the drug as a single-agent at the Memorial Sloan–Kettering Cancer Center. All patients were selected retrospectively. Seven tumors (70%) had mutations, six of which had in-frame nucleotide deletions in exon 19 that occur adjacent to K745 encoded by nucleotides 2233–2235. K745 has been shown to be critical for binding ATP (19). A seventh patient had a nonsynonymous mutation at nucleotide 2573 (T → G) in exon 21, resulting in a substitution of arginine for leucine at position 858 (L858R). This change occurs adjacent to the highly conserved DFG motif (amino

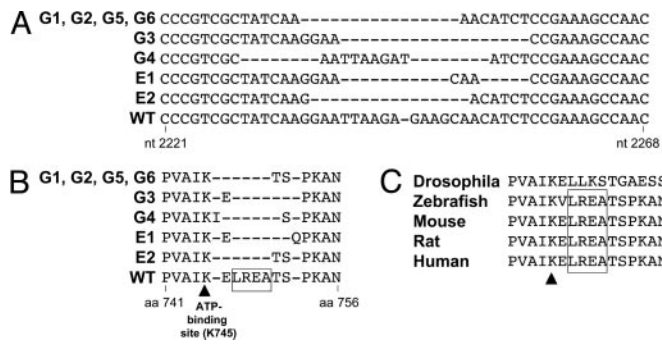


Fig. 1. Deletion mutations in exon 19 of *EGFR* from NSCLCs sensitive to TKIs, gefitinib (G) or erlotinib (E); all lack four amino acids, LREA, which are conserved among vertebrate species. (A) Nucleotide alignments. (B) Amino acid alignments. (C) Amino acid alignments of *EGFR* from various species. All alignments were generated by using Vector NTI software. See Table 1 for characteristics of patients.

acids 855–857) in the activation loop of the kinase (20) and was previously detected in NSCLCs (17, 18) (Table 1 and Fig. 6 A–D, which is published as supporting information on the PNAS web site). Mutations were not found in DNA from peripheral blood available from four patients (G2, G3, G5, and G6), implying that the lesions arose in somatic cells. Among the seven tumors with mutations, five arose in never smokers, six had adenocarcinoma histology with features of BAC, and none were from patients of East Asian origin.

Four of the exon 19 deletion mutations were the same as the previously described del E746-A750 (17, 18), and two were not previously described (del L747-S752 and del E746-T751insI). The del E746-T751insI mutation may have resulted from a double deletion of nucleotides 2229–2236 and 2245–2252 and an insertion of a single T nucleotide (Fig. 1 A and B). Remarkably, in this mutant, despite elimination of the codon for K745, the remaining nucleotide sequence reencoded a lysine but eliminated amino acids LREA, as in the other exon 19 deletions. The LREA motif is completely conserved among EGFRs in vertebrates (Fig. 1C).

Most somatic *EGFR* mutations in NSCLCs have been reported to be heterozygous. However, in the analysis of two of seven tumors (G1 and G3), no wild-type sequence was detected in the region encompassing the deletion. This result implies that (i) the mutations in tumors from patients G1 and G3 were hemi- or homozygous, (ii) the mutant gene was selectively amplified in these tumors, or (iii) mutations in general may be homozygous, with wild-type sequence originating from contaminating “normal” DNA (Table 1 and Fig. 6A; see Discussion).

None of eight gefitinib-refractory tumors contained mutations within exons 18–24 of *EGFR* ($P = 0.004$). Thus, *EGFR* mutations appear to be associated with sensitivity of NSCLCs to gefitinib.

Lung Tumors Sensitive to Erlotinib Also Harbor Mutations in *EGFR*. Erlotinib, like gefitinib, is an ATP-competitive inhibitor of the EGFR TK (Fig. 5). Erlotinib also appears to be particularly effective in lung cancers with BAC histology and in patients who are never smokers,^{††} but the drug’s clinically relevant target in tumors has not yet been documented. To see whether lung tumors sensitive to erlotinib also contained mutations within the TK domain of *EGFR*, we analyzed exons 18–24 in seven tumors from patients who demonstrated a partial response while on a Phase II trial of this agent in BAC.

Five tumors contained mutations, two of which were multinucleotide in-frame deletions within exon 19 near the ATP-binding site

Table 2. Somatic mutations in the TK domain of *EGFR* are common in surgically resected NSCLCs derived from never smokers but infrequent in former or current smokers

Specimen	Sex	Smoking	Histology	Mutation
3	F	Never	AWBF	L858R
16	F	Never	BWFI	None
20	F	Never	BWFI	None
24	M	Never	AWBF	L858R
25	F	Never	AWBF	L858R
33	F	Never	AWBF	None
42	M	Never	AWBF	L858R
77	F	Never	AWBF	H835L
82	F	Never	AWBF	None
120	F	Never	AWBF	None
124	F	Never	AWBF	None
166	F	Never	AWBF	L858R
169	F	Never	AWBF	None
176	F	Never	ADENO	None
230	M	Never	ADENO	E746-A750
5	F	Former	ADENO	L858R
65	M	Former	AWBF	L858R
98	F	Former	AWBF	L858R
134	M	Former	ADENO	L858R

Exons 2–28 from *EGFR* were examined for mutations in 96 surgically resected NSCLCs. Mutations in the TK domain were detected in 7 of 15 never smokers with adenocarcinomas and in 4 of 81 NSCLCs resected from former or current smokers. All abbreviations as per Table 1.

(K745), similar to those found in gefitinib-sensitive tumors. These deletions all eliminated amino acids LREA (amino acids 747–750) (Fig. 1 A and B). One mutation (del L747-S752insQ) has not been previously reported. Three tumors contained the L858R mutation at nucleotide 2573 that is also found in gefitinib-responsive tumors. One specimen also had a second mutation that was previously unreported: a C → T change at nucleotide 2326 in exon 20, substituting cysteine for arginine at position 776 (R776C), carboxy-terminal to the P-loop (Fig. 6E). Four of five mutation-positive tumors were obtained from never smokers, and none were from patients of East Asian origin.

Matched normal tissue available from four patients (E1–E3 and E5) showed only the wild-type sequence, indicating that mutations arose in somatic cells. No mutations were observed in exons 18–24 in tumors from 10 patients on the trial who did not have a partial response ($P = 0.003$). Thus, similar to results with gefitinib, mutations in the *EGFR* TK domain are also associated with sensitivity of NSCLCs to erlotinib.

***EGFR* Mutations Are Commonly Found in Lung Adenocarcinomas From Never Smokers.** Nine of 12 (75%) mutation-positive tumors in this study had adenocarcinoma histology and were derived from never smokers (Table 1). Moreover, ≈10% of all cases of lung cancer arise in patients who have no history of tobacco use, most of which have adenocarcinoma histology (21, 22). To determine in a prospective manner the frequency of *EGFR* mutations in lung adenocarcinomas from never smokers, we sequenced exons 2–28 of *EGFR* in 15 tumor specimens that fit these clinical criteria. These samples were selected from our prospectively collected tissue bank of surgically resected NSCLCs derived from patients with stage I, II, and IIIA disease. At the time of surgery and tissue banking, none of the patients from whom the primary tumor was resected had received any treatment for lung cancer, including TKIs. In this “enriched” population of tumors from never smokers, 7 of 15 (47%) had mutations in the TK domain of *EGFR*. One tumor (specimen 230) had a deletion in exon 19 (del E746-A750), and five (specimens 3, 24, 25, 42, and 166) had the L858R amino acid substitution in exon 21 (Table 2). The seventh tumor (specimen 77) contained a previously unreported point mutation in exon 21 at nucleotide 2504

^{††}Miller, V. A., Patel, J., Shah, N., Kris, M. G., Tyson, L., Pizzo, B., Zakowski, M., Memoli, N., Sandler, A. & Johnson, D. H. (2003) *Proc. Am. Soc. Clin. Oncol.*, abstract 2491 (abstr.).

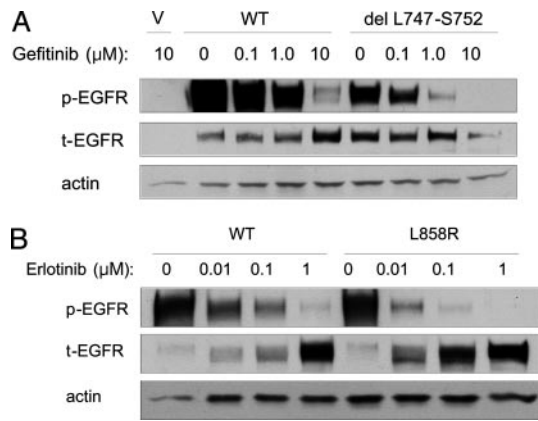


Fig. 3. Compared to wild-type EGFR, the del L747-S752 mutant has similar sensitivity to TKIs, whereas the L858R mutant is inhibited at ≈ 10 -fold lower concentrations of drug. (A) Dose-dependent inhibition by gefitinib of del L747-S752 mutant EGFR as compared to wild type. Cells were treated with gefitinib at various concentrations for 1 h before lysis. Results with erlotinib and in the presence of EGFR were similar (data not shown). (B) Dose-dependent inhibition by erlotinib of L858R mutant as compared to wild-type EGFR. Dilution points at 0.0001 micromolar are not shown. Results with gefitinib were similar (data not shown). V, vector alone.

(81%) tumors from individuals experiencing partial responses or marked clinical improvement while taking gefitinib or erlotinib contain mutations in the *EGFR* TK domain. By contrast, none of 29 specimens from patients refractory to these agents had such mutations ($P < 10^{-10}$). These findings demonstrate that mutations in the TK domain of *EGFR* are associated with sensitivity to these two drugs. Whether gefitinib and erlotinib target exactly the same or overlapping sets of NSCLC patients and whether distinct mutations confer greater sensitivity to specific EGFR-TK inhibitors has not yet been determined, because the number of sensitive tumors analyzed is still small.

We also demonstrate that 11 of 96 (12%) primary NSCLCs resected from untreated patients contain mutations in *EGFR*, all within the TK domain. None of these tumors were derived from patients of East Asian origin. Taken together with the published literature on *EGFR* mutations in primary lung cancers from patients in the U.S., 14 of 182 tumors (8%) are positive for *EGFR*

mutations. These data could account for the responses seen in the phase II trials of gefitinib, in which $\approx 10\%$ of European or American patients experienced radiographic regressions (12). However, other mechanisms of drug sensitivity may also apply. Remarkably, by selecting tumors for certain clinical characteristics predictive of response to TKIs, i.e., tumors from never-smokers with adenocarcinoma histology, we enriched the percentage of patients with such mutations. Thus, 7 of 15 tumors from never-smoking patients with adenocarcinoma histology had *EGFR* mutations, whereas only 4 of 81 NSCLCs from former and current smokers contained them. Moreover, three of the four patients in the latter cohort had relatively short smoking histories. These data show that lung tumors from patients with minimal direct exposure to cigarettes and with adenocarcinoma histology, usually with features of BAC, have a distinct molecular phenotype that distinguishes them from the remainder of NSCLCs. How patients with mutation-positive NSCLC at various stages of disease should be treated is unknown, but clearly warrants prompt investigation. At the same time, critical mutations in other kinases should be sought in NSCLCs with wild-type *EGFR* from never, former, and current smokers.

Among the NSCLC-associated *EGFR* mutations reported to date, 49 of 56 (88%) occur in two “hotspots” (Fig. 4). A total of 29 of these 49 (59%) are multinucleotide in-frame deletions that eliminate four amino acids (LREA) in exon 19. The other 20 of 49 “hotspot” mutations (41%) are point mutations in exon 21 that result in a specific amino acid substitution at position 858 (L858R). The remaining 7 of 56 mutations (12%) are nucleotide substitutions found in exons 18–21 outside of the common sites of mutation, including the previously unreported R776C and H835L mutations described here. In nearly all cases, only one mutation has been detected per tumor. However, in this study, we did find one tumor sample with two mutations (patient E3, R776C and L858R). The significance of the R776C mutation and whether these two mutations are on the same chromosome, different chromosomes in the same cells, or from different subclones with the same tumor specimen are all unknown.

NSCLC-associated *EGFR* mutations are most frequently heterozygous. However, Paez *et al.* (18) reported one mutation involving exon 19 that appeared to be homozygous, and we detected two such cases. Interpretation of mutational status solely from DNA sequencing can be problematic. On the one hand, contaminating normal cells with wild-type *EGFR* could account for apparent heterozygosity; on the other hand, ampli-

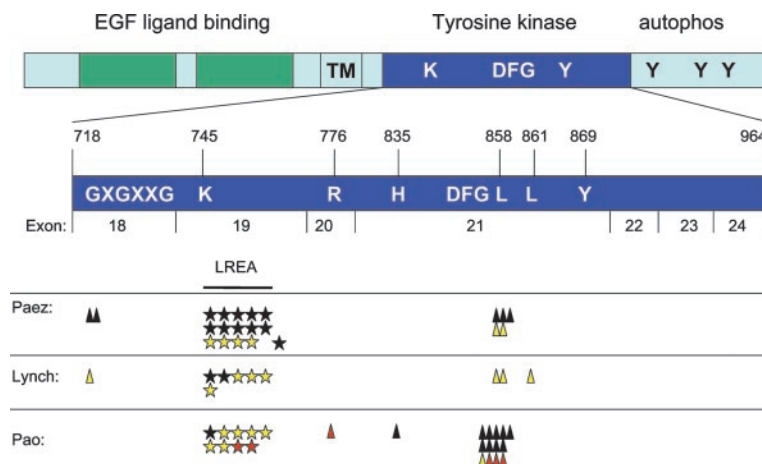


Fig. 4. Summary of mutations reported here and previously detected in the TK domain of *EGFR* in NSCLCs. Schematic view of *EGFR* and key domains, with an expanded view of the TK domain encoded by exons 18–24 (amino acids 718–964). Yellow, sensitive to gefitinib; red, sensitive to erlotinib; black, never treated with TKI. Data are from this paper and refs. 17 and 18. All exon 19 deletions lack amino acids LREA except for one reported by Paez *et al.* (18) (del S752–I759). In our series, one tumor with an L858R mutation also had an R776C mutation (see Table 1). Functional landmarks include the GXGXXG motif at position 719, the K745 critical for ATP-binding, the DFG motif at position 855, and a tyrosine at 869. The sites of described mutations are G719, L747–A750, S752, R776, H835, L858, and L861.

Explore Litigation Insights

Docket Alarm provides insights to develop a more informed litigation strategy and the peace of mind of knowing you're on top of things.

Real-Time Litigation Alerts



Keep your litigation team up-to-date with **real-time alerts** and advanced team management tools built for the enterprise, all while greatly reducing PACER spend.

Our comprehensive service means we can handle Federal, State, and Administrative courts across the country.

Advanced Docket Research



With over 230 million records, Docket Alarm's cloud-native docket research platform finds what other services can't. Coverage includes Federal, State, plus PTAB, TTAB, ITC and NLRB decisions, all in one place.

Identify arguments that have been successful in the past with full text, pinpoint searching. Link to case law cited within any court document via Fastcase.

Analytics At Your Fingertips



Learn what happened the last time a particular judge, opposing counsel or company faced cases similar to yours.

Advanced out-of-the-box PTAB and TTAB analytics are always at your fingertips.

API

Docket Alarm offers a powerful API (application programming interface) to developers that want to integrate case filings into their apps.

LAW FIRMS

Build custom dashboards for your attorneys and clients with live data direct from the court.

Automate many repetitive legal tasks like conflict checks, document management, and marketing.

FINANCIAL INSTITUTIONS

Litigation and bankruptcy checks for companies and debtors.

E-DISCOVERY AND LEGAL VENDORS

Sync your system to PACER to automate legal marketing.